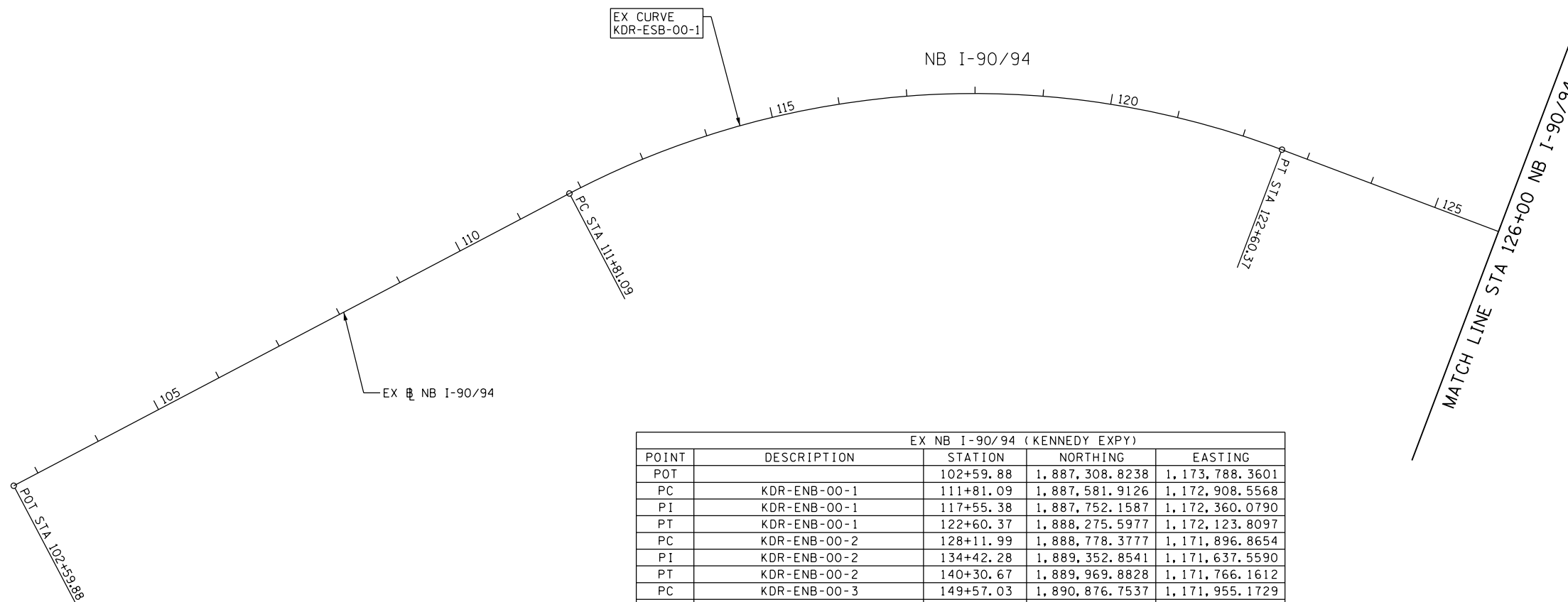
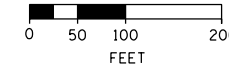


GRAPHIC SCALE



EX NB I-90/94 (KENNEDY EXPY)				
POINT	DESCRIPTION	STATION	NORTHING	EASTING
POT		102+59.88	1,887,308.8238	1,173,788.3601
PC	KDR-ENB-00-1	111+81.09	1,887,581.9126	1,172,908.5568
PI	KDR-ENB-00-1	117+55.38	1,887,752.1587	1,172,360.0790
PT	KDR-ENB-00-1	122+60.37	1,888,275.5977	1,172,123.8097
PC	KDR-ENB-00-2	128+11.99	1,888,778.3777	1,171,896.8654
PI	KDR-ENB-00-2	134+42.28	1,889,352.8541	1,171,637.5590
PT	KDR-ENB-00-2	140+30.67	1,889,969.8828	1,171,766.1612
PC	KDR-ENB-00-3	149+57.03	1,890,876.7537	1,171,955.1729
PI	KDR-ENB-00-3	151+93.71	1,891,108.4576	1,172,003.4651
PT	KDR-ENB-00-3	154+28.14	1,891,345.0103	1,171,995.6132
POT		183+13.36	1,894,228.6347	1,171,899.8969
PC	KDR-ENB-00-4	190+77.41	1,894,992.2698	1,171,874.5496
PI	KDR-ENB-00-4	192+81.92	1,895,196.6626	1,171,867.7651
PT	KDR-ENB-00-4	194+86.31	1,895,400.3262	1,171,849.2283
PC	KDR-ENB-00-5	196+49.74	1,895,563.0812	1,171,834.4148
PI	KDR-ENB-00-5	199+68.51	1,895,880.5418	1,171,805.5204
PT	KDR-ENB-00-5	202+87.12	1,896,199.1177	1,171,794.3177
POT	209+89.95 BK, 3+06.94 AH		1,896,901.5590	1,171,770.9004
PC	KDR-ENB-00-6	5+24.89	1,897,119.3934	1,171,763.6385
PI	KDR-ENB-00-6	7+04.34	1,897,298.7419	1,171,757.6595
PT	KDR-ENB-00-6	8+83.32	1,897,475.9425	1,171,729.3467
PC	KDR-ENB-00-7	16+62.09	1,898,244.9598	1,171,606.4743
PI	KDR-ENB-00-7	20+43.63	1,898,621.7192	1,171,546.2763
PT	KDR-ENB-00-7	24+22.65	1,899,002.9421	1,171,561.7870
PC	KDR-ENB-00-8	24+61.57	1,899,041.8342	1,171,563.3694
PI	KDR-ENB-00-8	27+72.52	1,899,352.5300	1,171,576.0107
PT	KDR-ENB-00-8	30+83.20	1,899,663.3270	1,171,566.1658
POT		45+35.14	1,901,114.5368	1,171,520.1970

FILE PATH = C:\Users\pmsarno\Desktop\print\26-14\016028-Sht-ATB-01.dgn



D160W28-Sht-ATB-01.dgn
 USER NAME = pmsarno
 PLOT SCALE = 200.0000' / in.
 PLOT DATE = 4/26/2014

DESIGNED - KAM
 DRAWN - NSA/OPS
 CHECKED - KCF
 DATE - 04/28/14

REVISED -
 REVISED -
 REVISED -
 REVISED -

STATE OF ILLINOIS
 DEPARTMENT OF TRANSPORTATION

ALIGNMENT, TIES AND BENCHMARKS

SCALE: 1" = 100' SHEET 1 OF 12 SHEETS STA. TO STA.

F.A.I. RTE.	SECTION	COUNTY	TOTAL SHEETS	SHEET NO.
90/94/290	2013-010R	COOK	747	47
CONTRACT NO. 60W28			ILLINOIS FED. AID PROJECT	