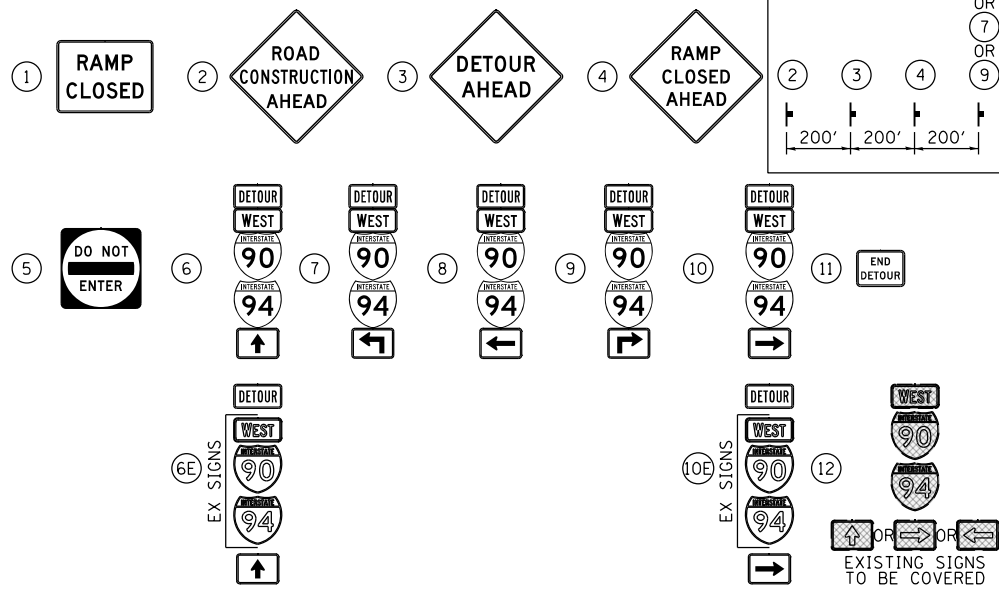


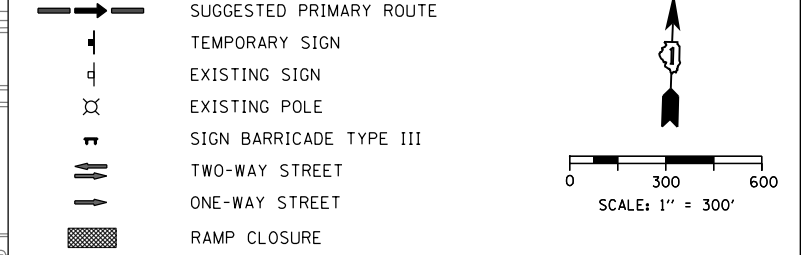
SIGN ASSEMBLIES



TRAFFIC CONTROL NOTES

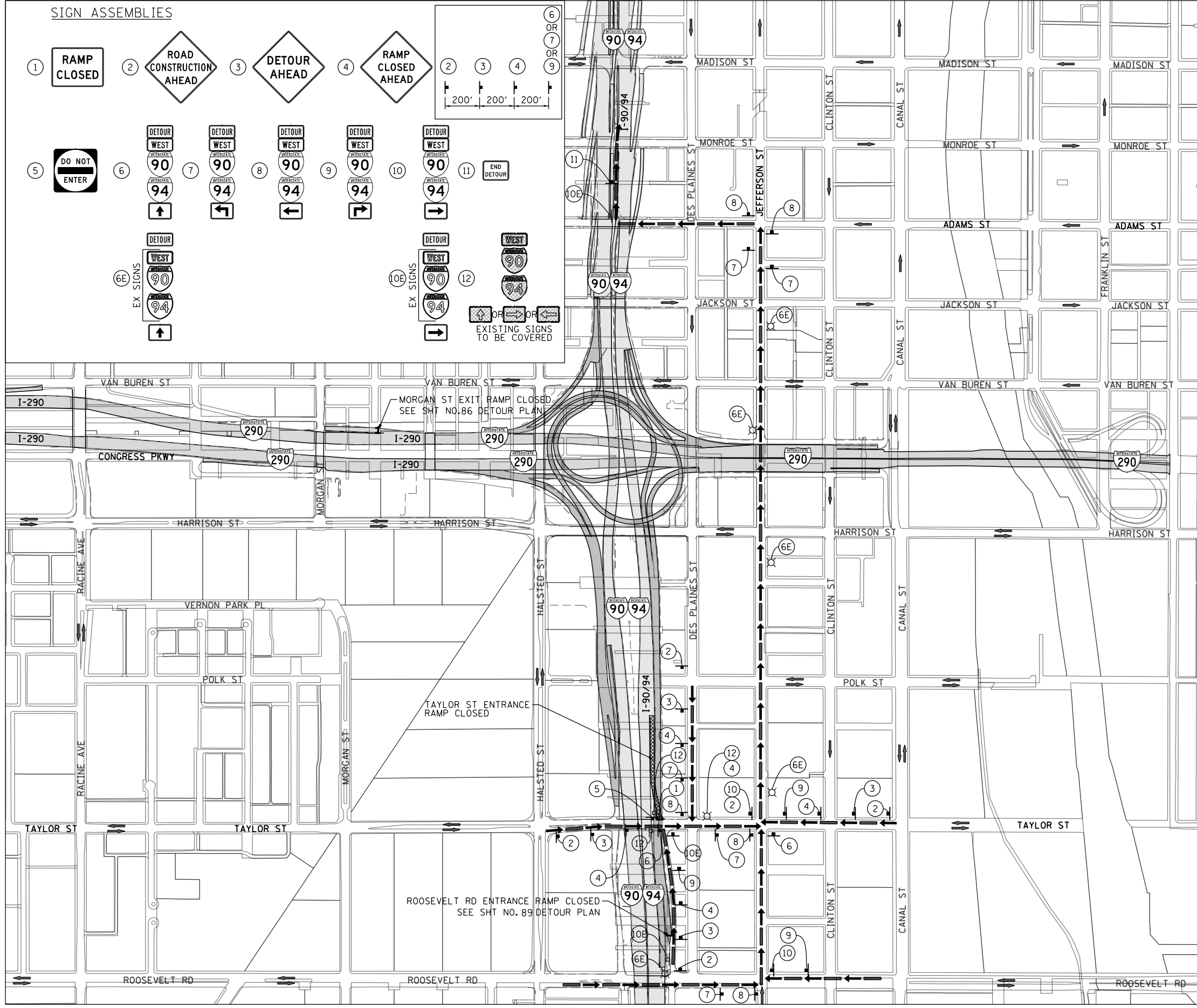
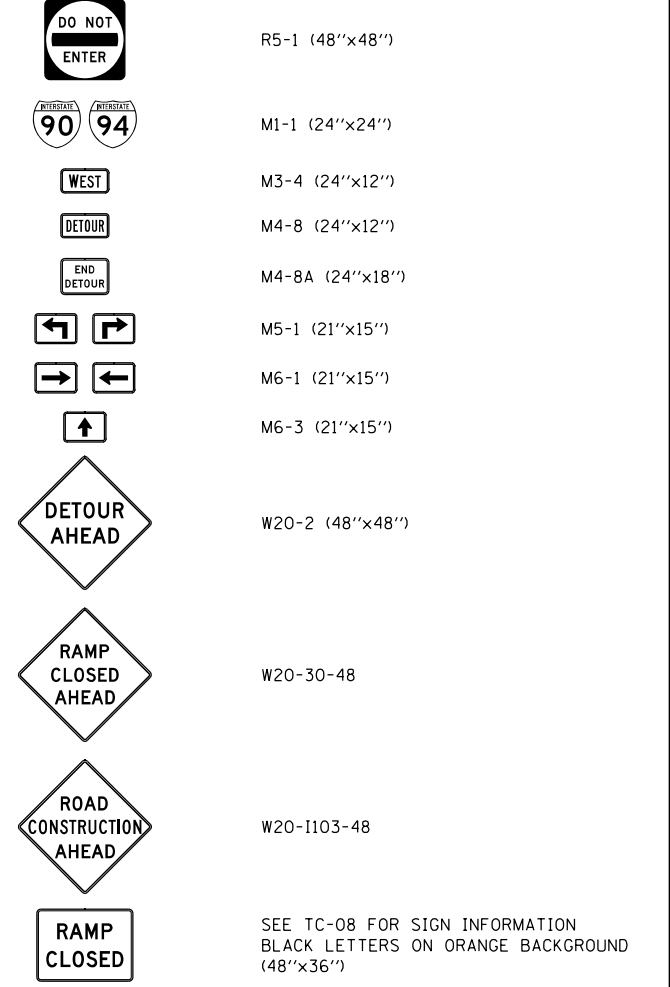
1. DETOUR SIGNING MUST BE INSTALLED PRIOR TO CLOSURE OF THE RAMP NW AND NE.
2. RAMP CLOSURE SHALL FOLLOW THE LATEST VERSION OF THE IDOT DISTRICT 1 STANDARD DETAIL TC-08. SEE SUGGESTED STAGES OF CONSTRUCTION AND TRAFFIC CONTROL PLANS FOR ADDITIONAL INFORMATION.
3. PLACEMENT AND SPACING OF SIGNS AND BARRICADES SHALL BE IN ACCORDANCE WITH IDOT DISTRICT 1 STANDARD DETAIL TC-08 AND TC-21.
4. ALL DETOUR SIGNS SHALL HAVE AN ORANGE BACKGROUND WITH BLACK LETTERS.
5. THE CONTRACTOR IS RESPONSIBLE FOR COORDINATION WITH OTHER ROAD WORK IN THE AREA.
6. THE COST OF SUPPLYING, ERECTING AND MAINTAINING BARRICADES, WARNING LIGHTS AND STANDARD SIGNS ALONG ALL DETOUR ROUTES SHALL BE INCLUDED IN THE CONTRACT COST OF TRAFFIC CONTROL AND PROTECTION (SPECIAL).

LEGEND



DETOUR SIGNS TYPE & SIZE

(ALL SIGN COLORS SHALL BE ACCORDING TO THE LATEST EDITION OF THE MUTCD)



FILE PATH = C:\Users\chiu\Desktop\60W28-Fost E.no\DETOUR\0160W28-sht-DeTour-05.dgn



D160W28-sht-DeTour-05.dgn
 USER NAME = chiue
 PLOT SCALE = 600.0000' / in.
 PLOT DATE = 4/27/2014

DESIGNED - AFC
 DRAWN - AFC
 CHECKED - KCF
 DATE - 4/28/2014

REVISED -
 REVISED -
 REVISED -
 REVISED -

**STATE OF ILLINOIS
 DEPARTMENT OF TRANSPORTATION**

**DETOUR PLAN
 TAYLOR STREET ENTRANCE RAMP (STAGES 2 TO 3C)**
 SCALE: 1" = 300' SHEET 1 OF 1 SHEETS STA. TO STA.

F.A.I. RTE.	SECTION	COUNTY	TOTAL SHEETS	SHEET NO.
90/94/290	2013-010R	COOK	747	90
CONTRACT NO. 60W28			ILLINOIS FED. AID PROJECT	