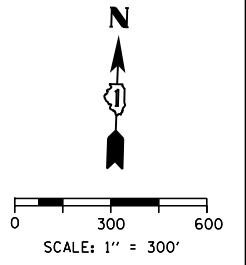


**TRAFFIC CONTROL NOTES**

1. DETOUR SIGNING MUST BE INSTALLED PRIOR TO CLOSURE OF WB I-90/94 (NB).
2. ROAD CLOSURE SHALL FOLLOW THE LATEST VERSION OF THE IDOT HIGHWAY STANDARDS AND DISTRICT 1 STANDARD DETAIL TC-08. SEE SUGGESTED STAGES OF CONSTRUCTION AND TRAFFIC CONTROL PLANS FOR ADDITIONAL INFORMATION.
3. PLACEMENT AND SPACING OF SIGNS AND BARRICADES SHALL BE IN ACCORDANCE WITH IDOT DISTRICT 1 STANDARD DETAIL TC-08 AND TC-21.
4. ALL DETOUR SIGNS SHALL HAVE AN ORANGE BACKGROUND WITH BLACK LETTERS.
5. THE CONTRACTOR IS RESPONSIBLE FOR COORDINATION WITH OTHER ROAD WORK IN THE AREA.
6. THE COST OF SUPPLYING, ERECTING AND MAINTAINING BARRICADES, WARNING LIGHTS AND STANDARD SIGNS ALONG ALL DETOUR ROUTES SHALL BE INCLUDED IN THE CONTRACT COST OF TRAFFIC CONTROL AND PROTECTION (SPECIAL).
7. THIS DETOUR CAN ONLY BE USED DURING GIRDER ERECTION. REFER TO SPECIAL PROVISION "GIRDER ERECTION INFORMATION AND RESTRICTIONS" FOR ADDITIONAL INFORMATION.
8. DETOUR SIGNING SHALL BE INSTALLED ACCORDING TO DETOUR PLAN - TAYLOR STREET ENTRANCE RAMP OF THE SUGGESTED PRIMARY ROUTE FOR WB I-90/94 (NB). SEE SHEET NO. 90 .

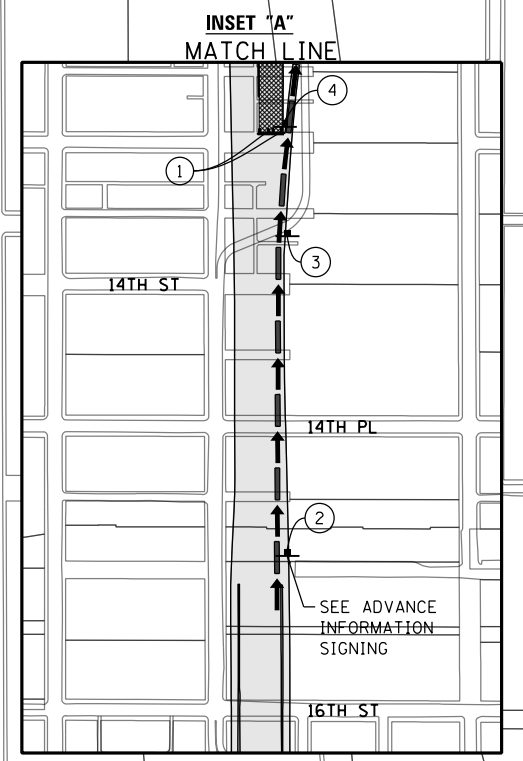
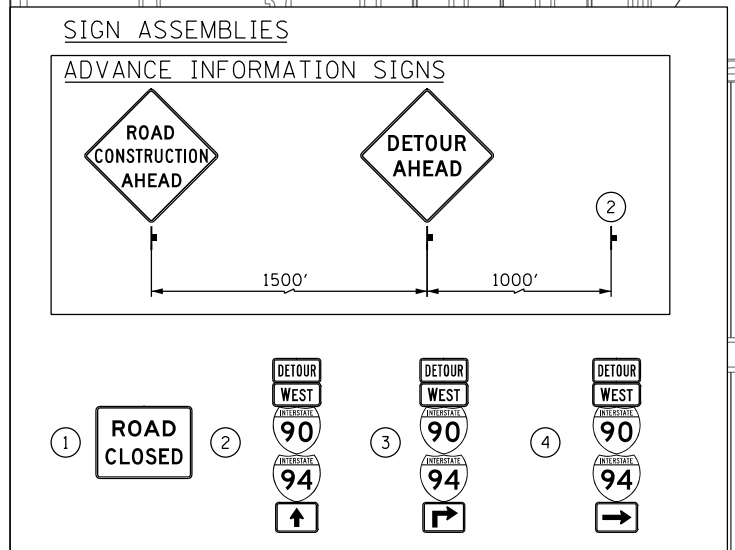
**LEGEND**

- SUGGESTED PRIMARY ROUTE
- TEMPORARY SIGN
- EXISTING SIGN
- EXISTING POLE
- SIGN BARRICADE TYPE III
- TWO-WAY STREET
- ONE-WAY STREET
- RAMP CLOSURE



**DETOUR SIGNS TYPE & SIZE**  
(ALL SIGN COLORS SHALL BE ACCORDING TO THE LATEST EDITION OF THE MUTCD)

- M1-1 (24"x24")
- M3-4 (24"x12")
- M4-8 (24"x12")
- M5-1 (21"x15")
- M6-1 (21"x15")
- M6-3 (21"x15")
- W20-2 (48"x48")
- W20-1103-48
- R11-2  
SEE TC-21 FOR SIGN INFORMATION (48"x30")



FILE PATH = C:\Users\chiu\A\Desktop\60W28-Post F.mxd\DETOUR\60W28-sht-Detour-07.dgn



D160W28-sht-Detour-07.dgn  
 USER NAME = chiue  
 PLOT SCALE = 600.0000' / in.  
 PLOT DATE = 4/27/2014

DESIGNED - AFC  
 DRAWN - AFC  
 CHECKED - KCF  
 DATE - 4/28/2014

REVISED -  
 REVISED -  
 REVISED -  
 REVISED -

**STATE OF ILLINOIS  
 DEPARTMENT OF TRANSPORTATION**

**DETOUR PLAN**  
**WB I-90/94 (NB) (GIRDER ERECTION)**

SCALE: 1" = 300' SHEET 1 OF 1 SHEETS STA. TO STA.

F.A.I. RTE.	SECTION	COUNTY	TOTAL SHEETS	SHEET NO.
90/94/290	2013-010R	COOK	747	90B
CONTRACT NO. 60W28				

ILLINOIS FED. AID PROJECT