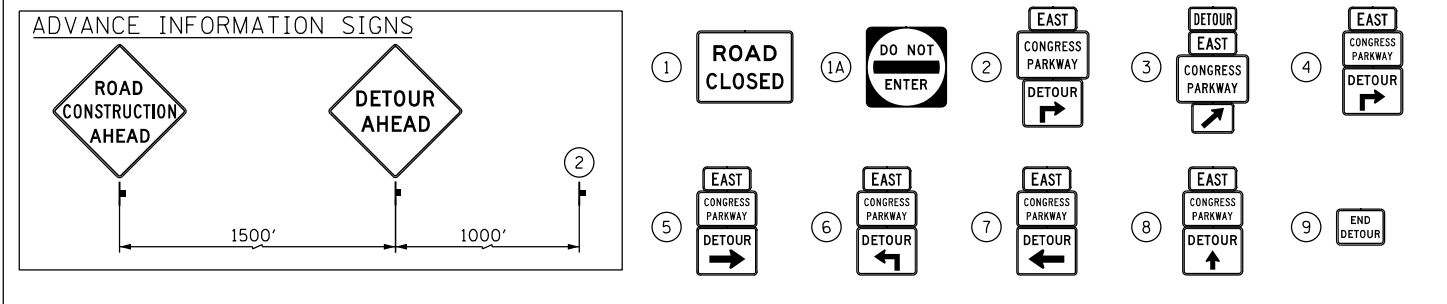


SIGN ASSEMBLIES

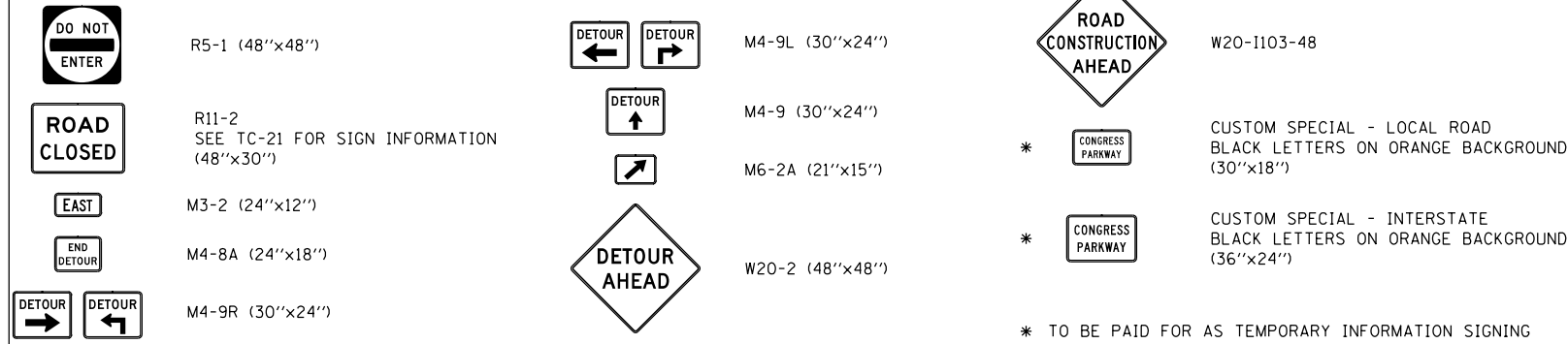


TRAFFIC CONTROL NOTES

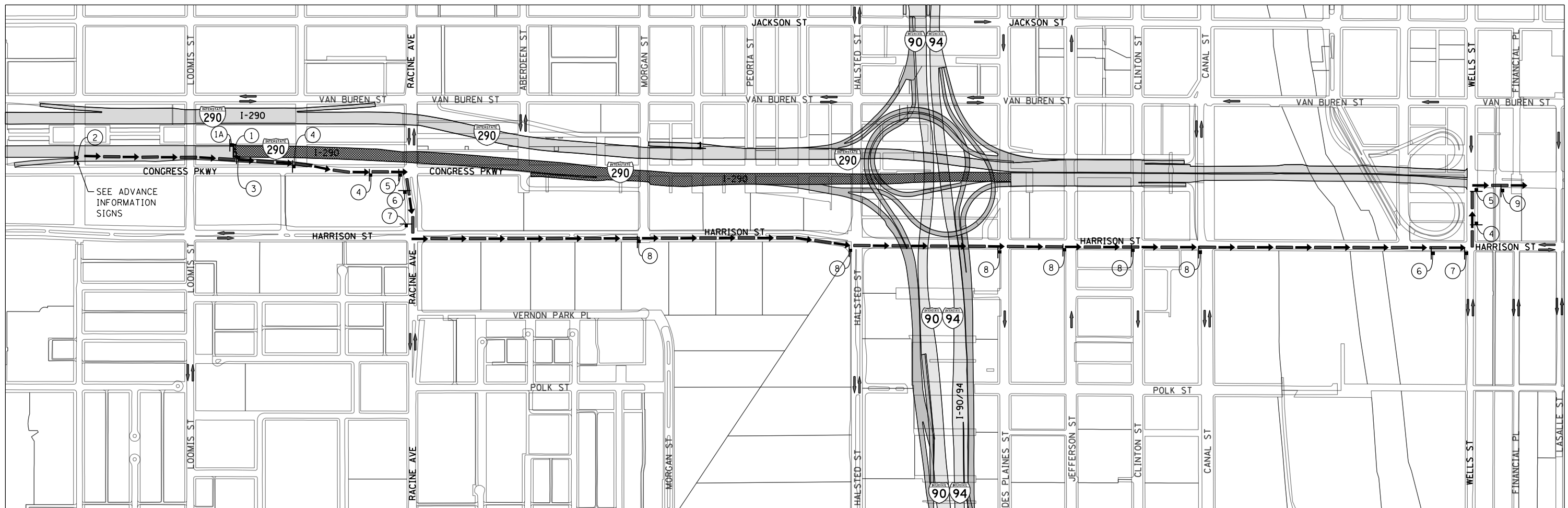
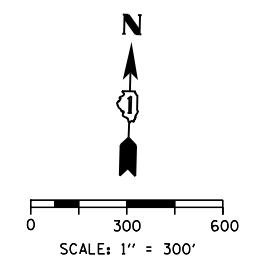
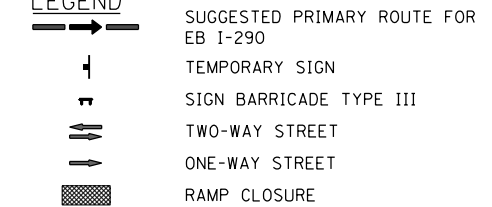
1. DETOUR SIGNING MUST BE INSTALLED PRIOR TO THE CLOSURE OF EB I-290.
2. ROAD CLOSURE SHALL FOLLOW THE LATEST VERSION OF THE IDOT HIGHWAY STANDARDS AND DISTRICT 1 STANDARD DETAIL TC-08. SEE SUGGESTED STAGES OF CONSTRUCTION AND TRAFFIC CONTROL PLANS FOR ADDITIONAL INFORMATION.
3. PLACEMENT AND SPACING OF SIGNS AND BARRICADES SHALL BE IN ACCORDANCE WITH IDOT DISTRICT 1 STANDARD DETAIL TC-08 AND TC-21.
4. ALL DETOUR SIGNS SHALL HAVE AN ORANGE BACKGROUND WITH BLACK LETTERS.
5. THE CONTRACTOR IS RESPONSIBLE FOR COORDINATION WITH OTHER ROAD WORK IN THE AREA.
6. THE COST OF SUPPLYING, ERECTING AND MAINTAINING BARRICADES, WARNING LIGHTS AND STANDARD SIGNS ALONG ALL DETOUR ROUTES SHALL BE INCLUDED IN THE CONTRACT COST OF TRAFFIC CONTROL AND PROTECTION (SPECIAL).
7. THIS DETOUR CAN ONLY BE USED DURING GIRDER ERECTION. REFER TO SPECIAL PROVISION "GIRDER ERECTION INFORMATION AND RESTRICTIONS" FOR ADDITIONAL INFORMATION.

DETOUR SIGNS TYPE & SIZE

(ALL SIGN COLORS SHALL BE ACCORDING TO THE LATEST EDITION OF THE MUTCD)



LEGEND



FILE PATH = C:\Users\chua\Desktop\60W28-Post\1\06\DOT\URS\0160W28-sht-Detour-09.dgn



D160W28-sht-Detour-09.dgn
 USER NAME = chua
 PLOT SCALE = 600.0000' / in.
 PLOT DATE = 4/27/2014

DESIGNED - AFC	REVISED -
DRAWN - AFC	REVISED -
CHECKED - KCF	REVISED -
DATE - 4/28/2014	REVISED -

**STATE OF ILLINOIS
 DEPARTMENT OF TRANSPORTATION**

**DETOUR PLAN
 EB I-290 (GIRDER ERECTION)**
 SCALE: 1" = 300' SHEET 1 OF 1 SHEETS STA. TO STA.

F.A.I. RTE. 90/94/290	SECTION 2013-010R	COUNTY COOK	TOTAL SHEETS 747	SHEET NO. 90D
CONTRACT NO. 60W28				ILLINOIS FED. AID PROJECT