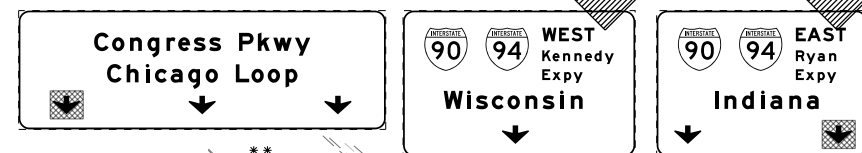
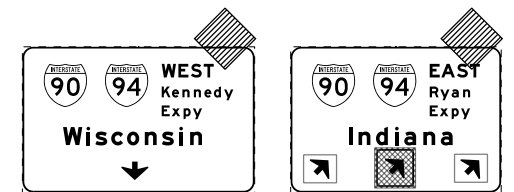


OH4 EXISTING OVERHEAD SIGNS TO REMAIN SEE CONTRACTS 60W26 AND 60W29 FOR SIGN DETAIL

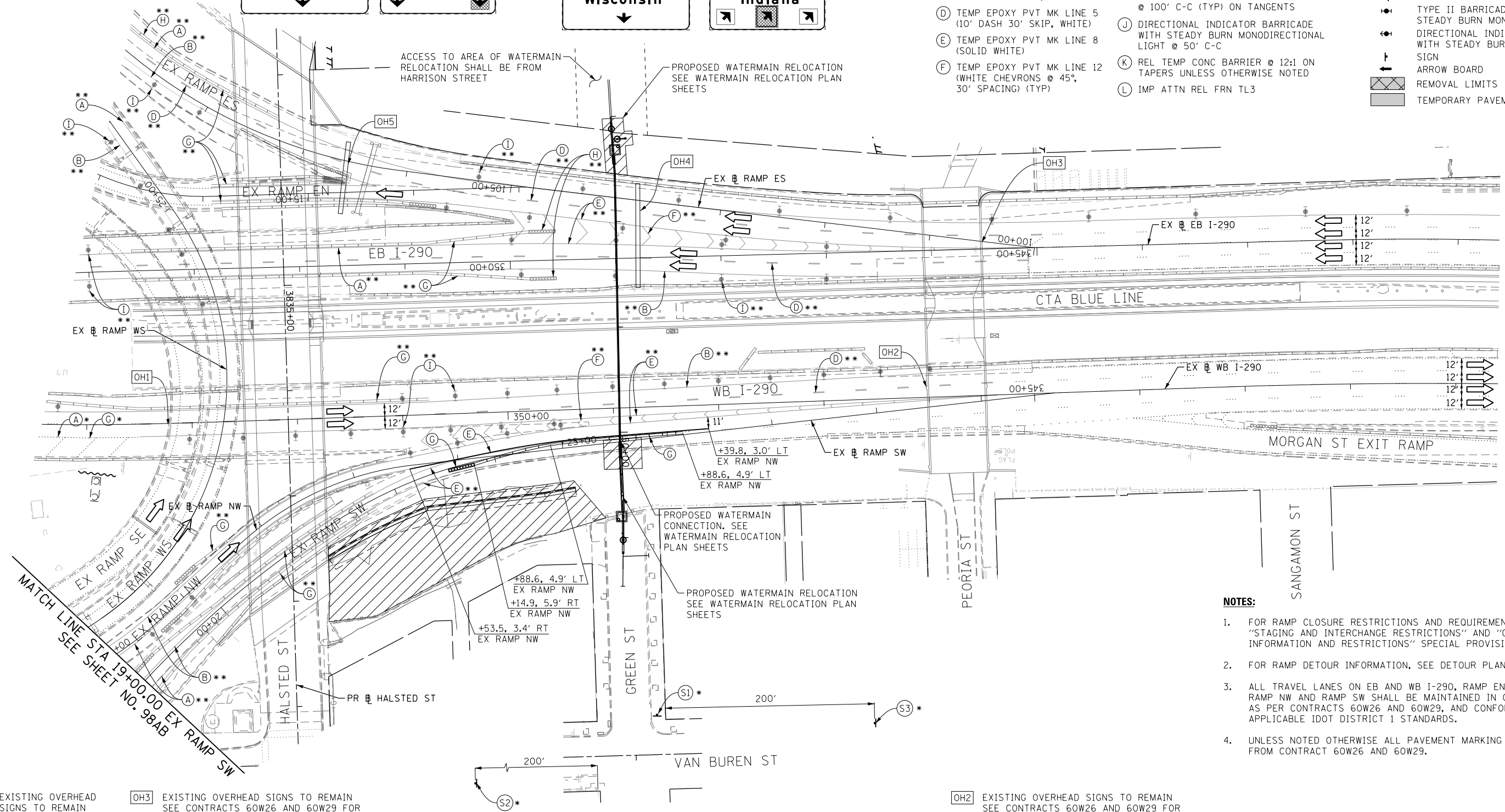
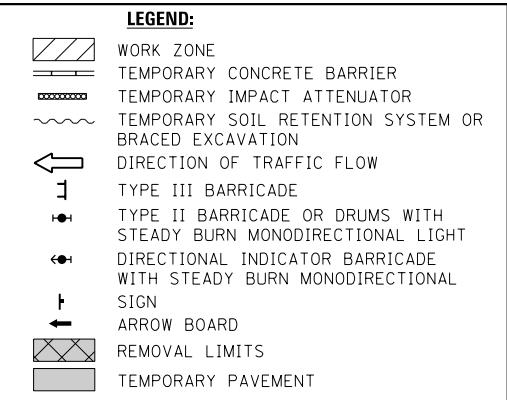


OH5 EXISTING OVERHEAD SIGNS TO REMAIN SEE CONTRACTS 60W26 AND 60W29 FOR SIGN DETAIL



**PROPOSED TEMP PAVEMENT MARKINGS AND TRAFFIC CONTROL DEVICES**

- (A) TEMP EPOXY PVT MK LINE 4 (SOLID WHITE)
- (B) TEMP EPOXY PVT MK LINE 4 (SOLID YELLOW)
- (C) TEMP EPOXY PVT MK LINE 4 (2' DASH 6' SKIP, WHITE)
- (D) TEMP EPOXY PVT MK LINE 5 (10' DASH 30' SKIP, WHITE)
- (E) TEMP EPOXY PVT MK LINE 8 (SOLID WHITE)
- (F) TEMP EPOXY PVT MK LINE 12 (WHITE CHEVRONS @ 45°, 30' SPACING) (TYP)
- (G) TEMP CONC BARRIER @ 12:1 ON TAPERS UNLESS OTHERWISE NOTED
- (H) IMP ATTN TEMP FRN TL3
- (I) TYPE II BARRICADE OR DRUMS WITH STEADY BURN MONODIRECTIONAL LIGHT @ 50' C-C (TYP) ON TAPERS AND RAMP @ 100' C-C (TYP) ON TANGENTS
- (J) DIRECTIONAL INDICATOR BARRICADE WITH STEADY BURN MONODIRECTIONAL LIGHT @ 50' C-C
- (K) REL TEMP CONC BARRIER @ 12:1 ON TAPERS UNLESS OTHERWISE NOTED
- (L) IMP ATTN REL FRN TL3

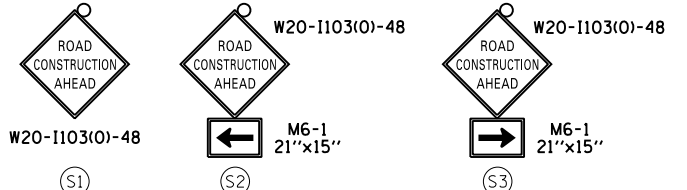
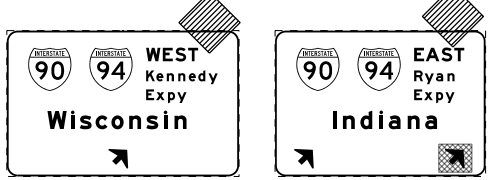


- NOTES:**
- FOR RAMP CLOSURE RESTRICTIONS AND REQUIREMENTS, SEE "STAGING AND INTERCHANGE RESTRICTIONS" AND "GIRDER ERECTION INFORMATION AND RESTRICTIONS" SPECIAL PROVISIONS.
  - FOR RAMP DETOUR INFORMATION, SEE DETOUR PLAN DETAIL SHEETS.
  - ALL TRAVEL LANES ON EB AND WB I-290, RAMP EN, RAMP ES, RAMP NW AND RAMP SW SHALL BE MAINTAINED IN CURRENT STAGE AS PER CONTRACTS 60W26 AND 60W29, AND CONFORM TO ALL APPLICABLE IDOT DISTRICT 1 STANDARDS.
  - UNLESS NOTED OTHERWISE ALL PAVEMENT MARKING AND SIGNS ARE FROM CONTRACT 60W26 AND 60W29.

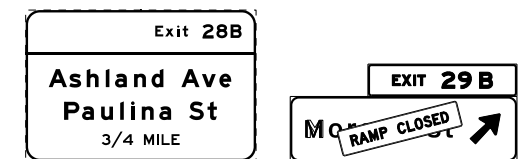
OH1 EXISTING OVERHEAD SIGNS TO REMAIN SEE CONTRACT 60W26 FOR SIGN DETAIL



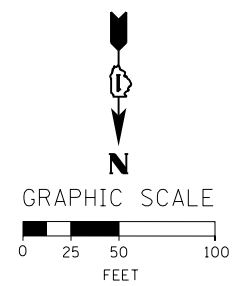
OH3 EXISTING OVERHEAD SIGNS TO REMAIN SEE CONTRACTS 60W26 AND 60W29 FOR SIGN DETAIL



OH2 EXISTING OVERHEAD SIGNS TO REMAIN SEE CONTRACTS 60W26 AND 60W29 FOR SIGN DETAIL



- \* FROM STAGE 1 TO REMAIN
- \*\* FROM CONTRACTS 60W26 AND 60W29 TO REMAIN
- \*\*\* FROM CONTRACT 60W71 TO REMAIN



FILE PATH = C:\Project\60W26-29-sht-Staging1-WM-RSW-01.dgn



D:\60W26-29-sht-Staging1-WM-RSW-01.dgn  
 USER NAME = auyeung  
 PLOT SCALE = 50.0000' / in.  
 PLOT DATE = 4/28/2014

DESIGNED - OPS	REVISED -
DRAWN - PHP	REVISED -
CHECKED - KCF	REVISED -
DATE - 04/28/14	REVISED -

STATE OF ILLINOIS  
 DEPARTMENT OF TRANSPORTATION

**SUGGESTED STAGES OF CONSTRUCTION AND TRAFFIC CONTROL PLAN**  
**MAINLINE STAGING 1 - RAMP SW CLOSURE**  
 SCALE: 1" = 50' SHEET 1 OF 5 SHEETS STA. 1833+00 TO STA. 340+60

F.A.I. RTE.	SECTION	COUNTY	TOTAL SHEETS	SHEET NO.
90/94/290	2013-010R	COOK	747	98AA
CONTRACT NO. 60W28				
ILLINOIS FED. AID PROJECT				