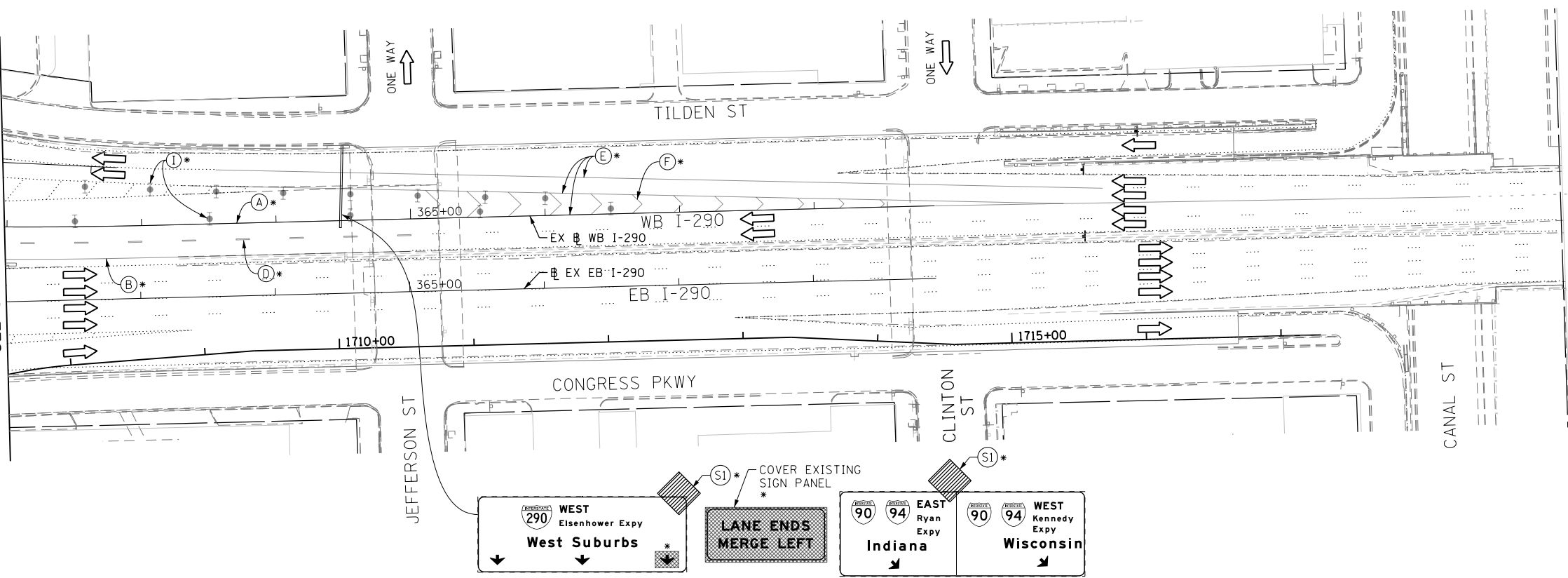
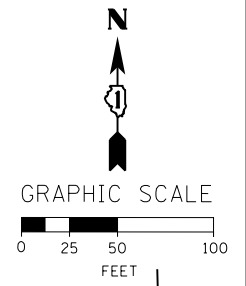


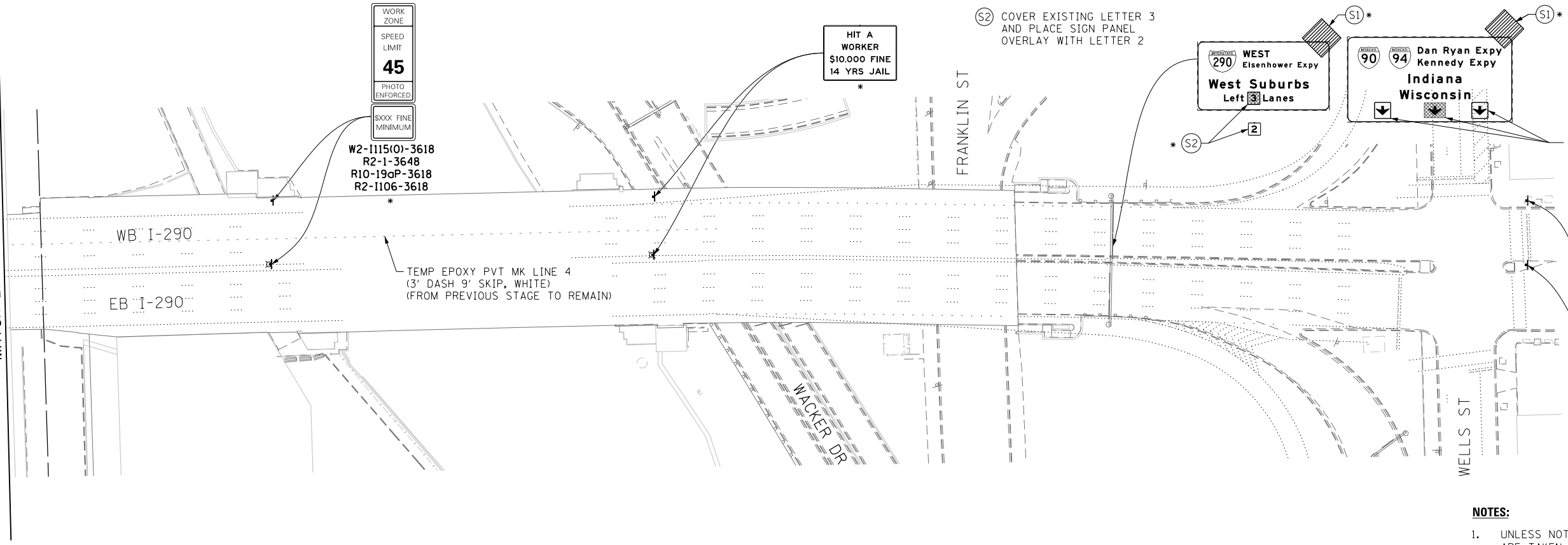
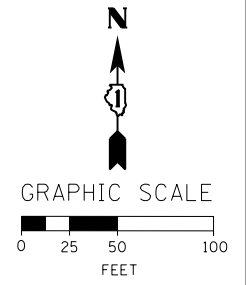
MATCH LINE STA 362+00 EB I-290
SEE SHEET NO. 188



TEMP EPOXY PVT MK LINE 4
(3' DASH 9' SKIP, WHITE)
(FROM PREVIOUS STAGE TO REMAIN)

MATCH LINE BELOW

MATCH LINE ABOVE



COVER EXISTING ARROW AND
PLACE TWO SIGN PANELS
OVERLAY WITH NEW ARROW
POINTING TO NEW LANE
CONFIGURATION LEADING
TO I-90/94
(FROM PREVIOUS STAGE TO REMAIN)

- NOTES:**
- UNLESS NOTED OTHERWISE, ALL STATIONS AND OFFSETS USED ARE TAKEN FROM EXISTING EB AND WB I-290 BASELINES.
 - FOR LEGEND SEE SHEET NO. 179

* FROM PREVIOUS STAGE TO REMAIN

FILE PATH = CA:\Projectbase\160W28-Sht-Staging4-13.dgn



D160W28-Sht-Staging4-13.dgn
USER NAME = auyeungh
PLOT SCALE = 50.0000' / in.
PLOT DATE = 4/28/2014

DESIGNED - OPS	REVISED -
DRAWN - PHP	REVISED -
CHECKED - KCF	REVISED -
DATE - 04/28/14	REVISED -

STATE OF ILLINOIS
DEPARTMENT OF TRANSPORTATION

SUGGESTED STAGES OF CONSTRUCTION AND TRAFFIC CONTROL PLAN
MAINLINE STAGING 4

SCALE: 1" = 50' SHEET 14 OF 14 SHEETS STA. TO STA.

F.A.I. RTE. 90/94/290	SECTION 2013-010R	COUNTY COOK	TOTAL SHEETS 747	SHEET NO. 194
ILLINOIS FED. AID PROJECT			CONTRACT NO. 60W28	