

FILE PATH = p:\388035\pmt\escomon\me\local\p\MECD\00\Documents\01_Americas\Transportation\62629938_Circle\Phase_1\000_CAD\005_Roadway_Sheets\60W28_Contract\0160W28-sht-WM-07.dgn

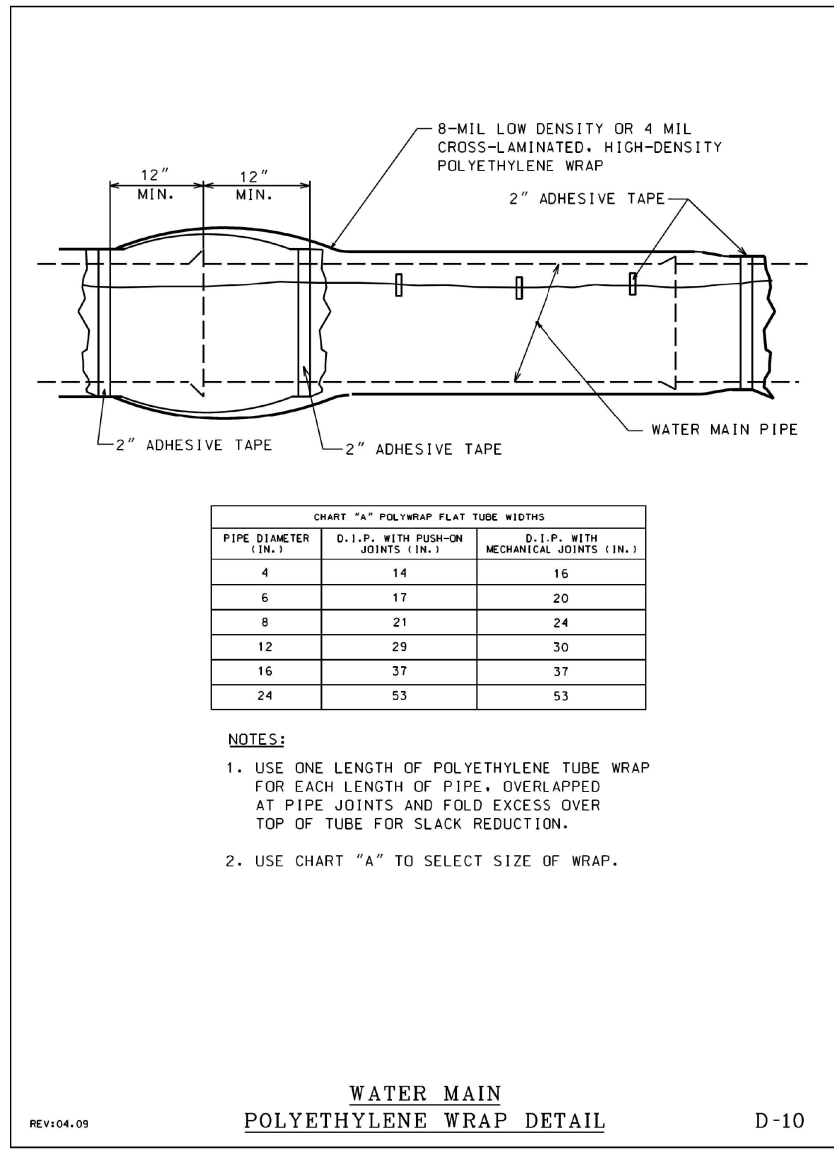
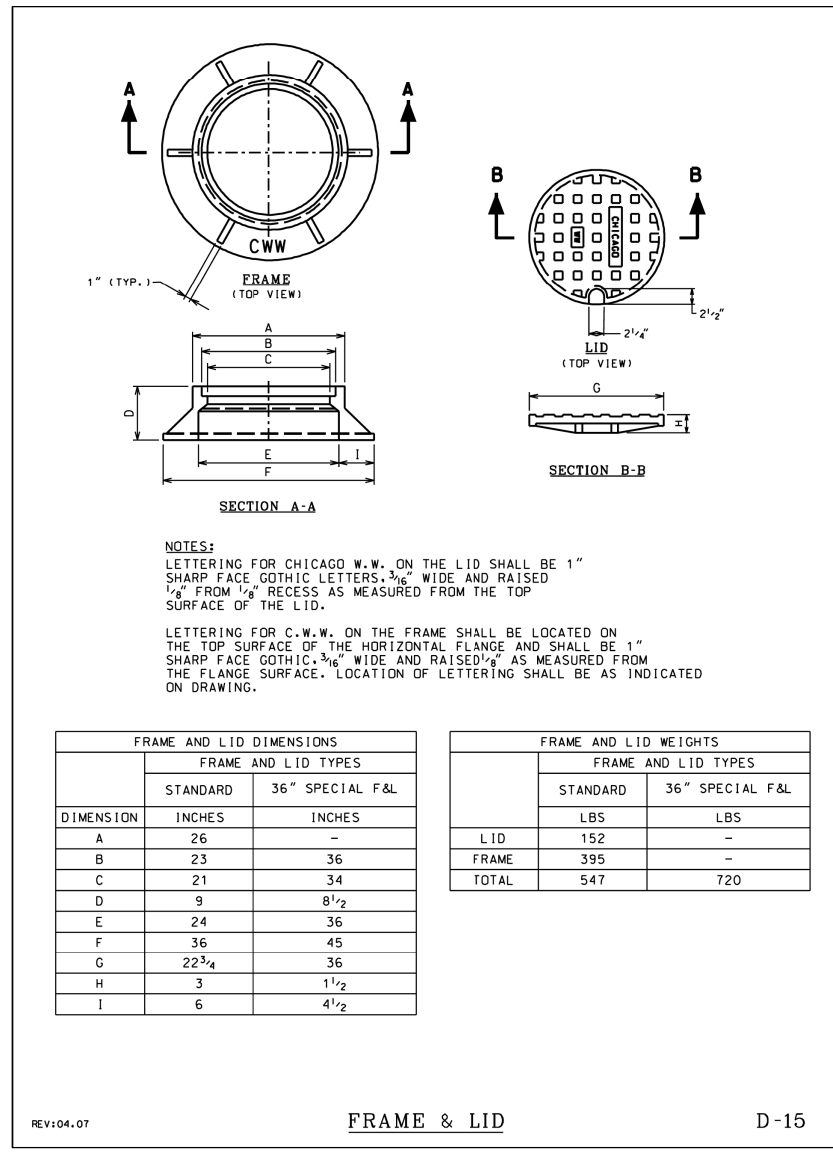


CHART "A" POLYWRAP FLAT TUBE WIDTHS

PIPE DIAMETER (IN.)	D.I.P. WITH PUSH-ON JOINTS (IN.)	D.I.P. WITH MECHANICAL JOINTS (IN.)
4	14	16
6	17	20
8	21	24
12	29	30
16	37	37
24	53	53

- NOTES:
1. USE ONE LENGTH OF POLYETHYLENE TUBE WRAP FOR EACH LENGTH OF PIPE, OVERLAPPED AT PIPE JOINTS AND FOLD EXCESS OVER TOP OF TUBE FOR SLACK REDUCTION.
 2. USE CHART "A" TO SELECT SIZE OF WRAP.

REV:04.09 WATER MAIN POLYETHYLENE WRAP DETAIL D-10



NOTES:
 LETTERING FOR CHICAGO W.W. ON THE LID SHALL BE 1" SHARP FACE GOTHIC LETTERS, 3/16" WIDE AND RAISED 1/8" FROM 1/2" RECESS AS MEASURED FROM THE TOP SURFACE OF THE LID.
 LETTERING FOR C.W.W. ON THE FRAME SHALL BE LOCATED ON THE TOP SURFACE OF THE HORIZONTAL FLANGE AND SHALL BE 1" SHARP FACE GOTHIC, 3/16" WIDE AND RAISED 1/4" AS MEASURED FROM THE FLANGE SURFACE. LOCATION OF LETTERING SHALL BE AS INDICATED ON DRAWING.

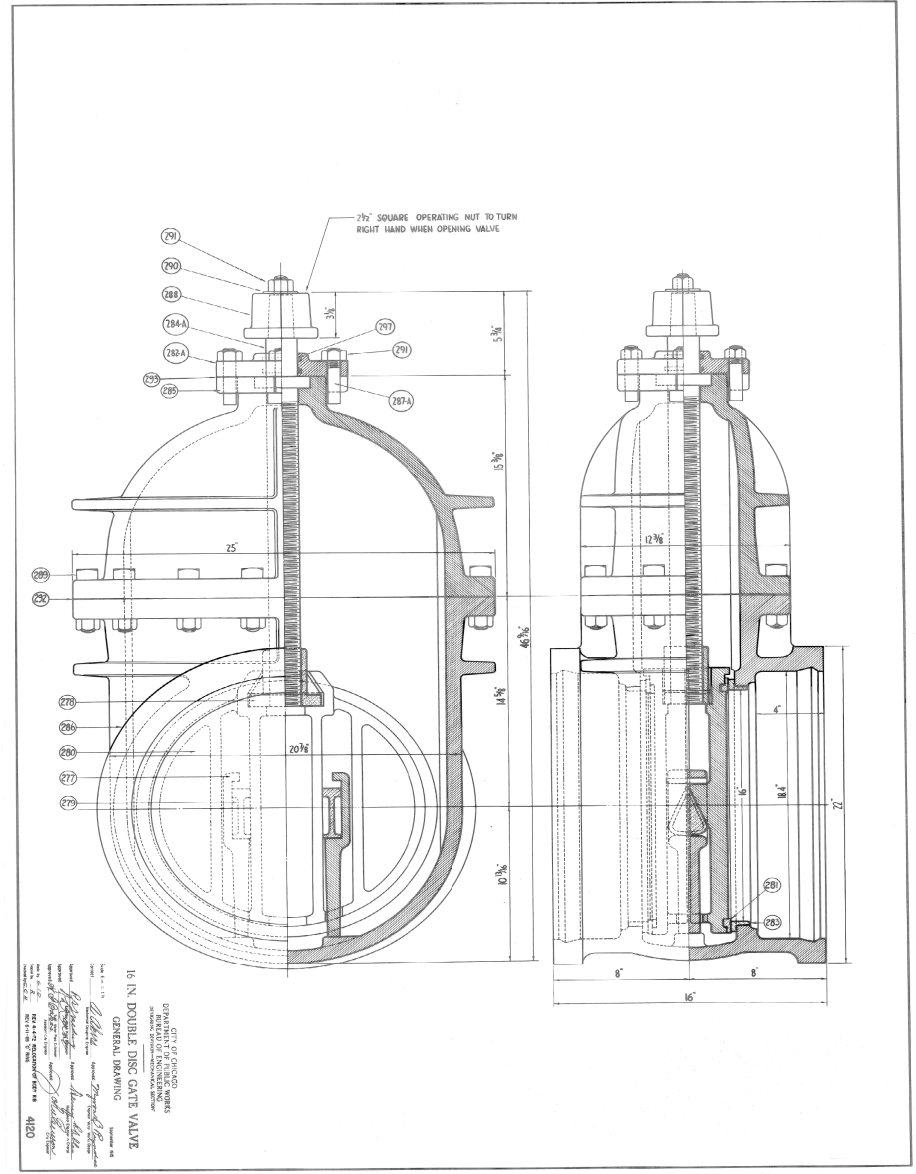
FRAME AND LID DIMENSIONS

DIMENSION	FRAME AND LID TYPES	
	STANDARD	36" SPECIAL F&L
A	26	-
B	23	36
C	21	34
D	9	8 1/2
E	24	36
F	36	45
G	22 3/4	36
H	3	1 1/2
I	6	4 1/2

FRAME AND LID WEIGHTS

	FRAME AND LID TYPES	
	STANDARD	36" SPECIAL F&L
LID	152	-
FRAME	395	-
TOTAL	547	720

REV:04.07 FRAME & LID D-15



CITY OF CHICAGO
 DEPARTMENT OF PUBLIC WORKS
 DIVISION OF WATER MAINS
 GENERAL DRAWING
 16 IN. DOUBLE DISC GATE VALVE
 4/100



D160W28-sht-WM-07.dgn
 USER NAME = CooperM2
 PLOT SCALE = 20.0000' / in.
 PLOT DATE = 3/24/2014

DESIGNED - HHC
 DRAWN - HHC
 CHECKED - RBB
 DATE - 03/28/14

REVISED -
 REVISED -
 REVISED -
 REVISED -

STATE OF ILLINOIS
 DEPARTMENT OF TRANSPORTATION

WATER MAIN RELOCATION DETAILS
 SCALE: SHEET OF SHEETS STA. TO STA.

F.A.I. RTE.	SECTION	COUNTY	TOTAL SHEETS	SHEET NO.
90/94/290	2013-010R	COOK	747	244
CONTRACT NO. 60W28				
ILLINOIS FED. AID PROJECT				