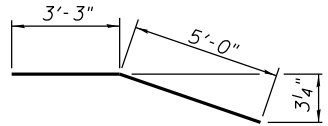
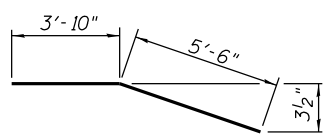


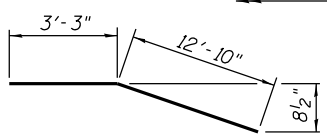
**DECK PLAN II - UNIT VI**



**BAR b603(E)**



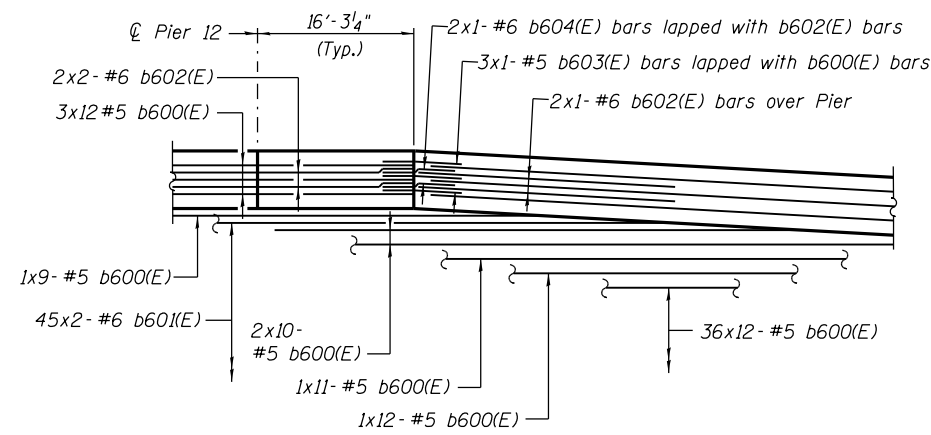
**BAR b604(E)**



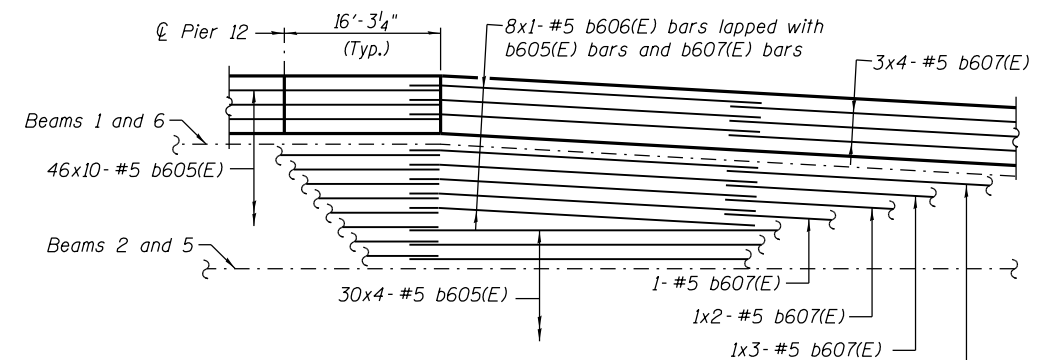
**BAR b606(E)**

**NOTES:**

1. Stations are along  $\mathbb{E}$  & PGL Ramp NW unless noted otherwise.
2. Dimensions radial from  $\mathbb{E}$  & PGL Ramp NW unless noted otherwise.
3. Minimum lap for #5 bars shall be 3'-3" and for #6 bars shall be 3'-10".
4. Bars indicated thus: 34x3-#6 etc. indicates 34 lines of bars with 3 lengths per line.
5. Bend longitudinal reinforcement bars as required to fit in the field.
6. See Sheet No. S-50 for parapet reinforcement.
7. See Sheet No. S-57 for deck cross section.
8. See Sheet No. S-57 for Bill of Material.
9. See Sheet No. S-57 for Section H-H.
10. See Sheet No. S-58, Detail 1, and Sheet S-72 for DS-11 Drainage Scupper.
11. See Sheet No. S-59 for Deck Pouring Sequence.
12. Dimensions are based on a Rolled Rail Strip Seal Joint. If the contractor elects to use the Welded Rail Strip Seal Joint, deck dimensions may require adjustments to satisfy the Details on Sheet No. S-70.



**DETAIL TOP LONG. REINF.**  
(Typ. Each Side)



**DETAIL BOTTOM LONG. REINF.**  
(Typ. Each Side)

0161705-60W2B-5044-Deck.dgn



USER NAME = floresg	DESIGNED - KMS	REVISED
	CHECKED - JRE	REVISED
PLOT SCALE = N.T.S.	DRAWN - TNP	REVISED
PLOT DATE = 5/7/2014	CHECKED - EJO	REVISED

**STATE OF ILLINOIS  
DEPARTMENT OF TRANSPORTATION**

**DECK PLAN II-UNIT VI  
STRUCTURE NO. 016-1705**

SHEET NO. S-44 OF S-165 SHEETS

F.A.I. RTE. 90/94/290	SECTION 2013-010R	COUNTY COOK	TOTAL SHEETS 747	SHEET NO. 360
CONTRACT NO. 60W28			ILLINOIS FED. AID PROJECT	