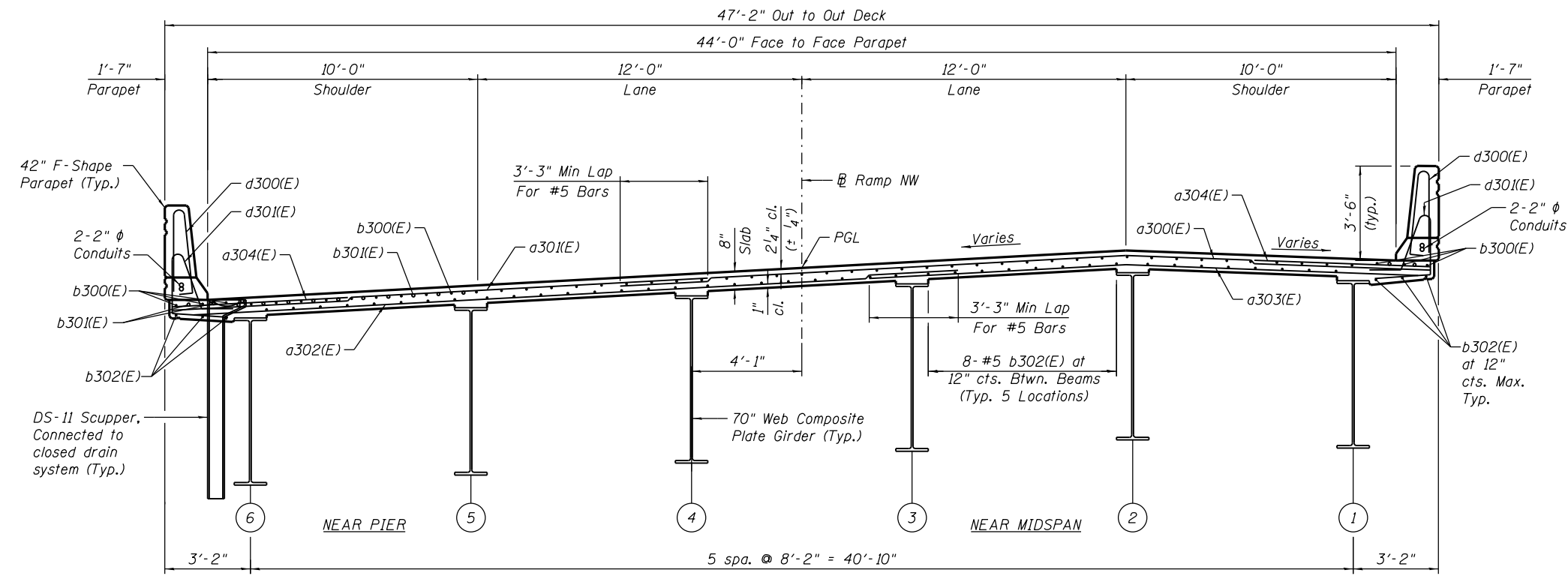
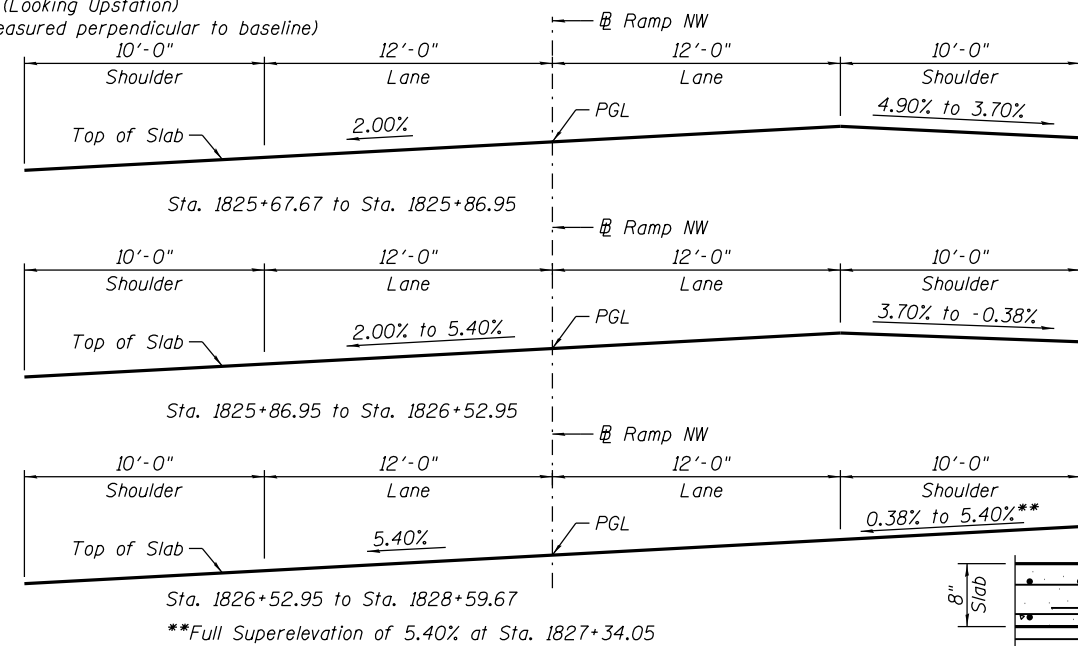


**SUPERSTRUCTURE
BILL OF MATERIAL**

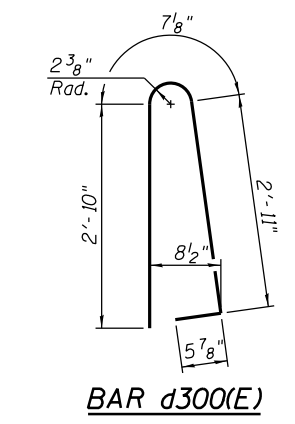
Bar	No.	Size	Length	Shape	
a300(E)	666	#5	30'-0"		
a301(E)	666	#5	19'-10"		
a302(E)	455	#5	30'-0"		
a303(E)	455	#5	19'-10"		
a304(E)	1332	#6	6'-6"		
a305(E)	60	#6	7'-10"		
a306(E)	24	#6	2'-8"		
a307(E)	16	#5	1'-6"		
b300(E)	612	#5	28'-3"		
b301(E)	192	#6	31'-6"		
b302(E)	598	#5	26'-4"		
d300(E)	638	#5	6'-10"		
d301(E)	638	#5	7'-4"		
e300(E)	32	#4	19'-8"		
e301(E)	7	#4	14'-1"		
e302(E)	98	#4	14'-8"		
e303(E)	7	#4	15'-7"		
e304(E)	7	#4	14'-7"		
e305(E)	112	#4	14'-3"		
e306(E)	7	#4	14'-3"		
e307(E)	5	#4	28'-6"		
e308(E)	4	#4	27'-11"		
e309(E)	6	#4	26'-0"		
e310(E)	5	#4	24'-11"		
e311(E)	4	#8	19'-8"		
e312(E)	5	#8	31'-0"		
e313(E)	4	#8	30'-4"		
e314(E)	5	#8	33'-4"		
e315(E)	4	#8	33'-0"		
x300(E)	92	#5	8'-2 1/2"		
Reinforcement Bars, Epoxy Coated				Pound	130,680
Concrete Superstructure				Cu. Yd.	453
Bridge Deck Grooving (Special)				Sq. Yd.	1329
Protective Coat				Sq. Yd.	1720



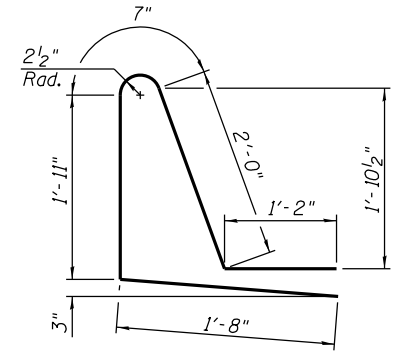
DECK CROSS SECTION - UNIT III
(Looking Upstation)
(Dimensions measured perpendicular to baseline)



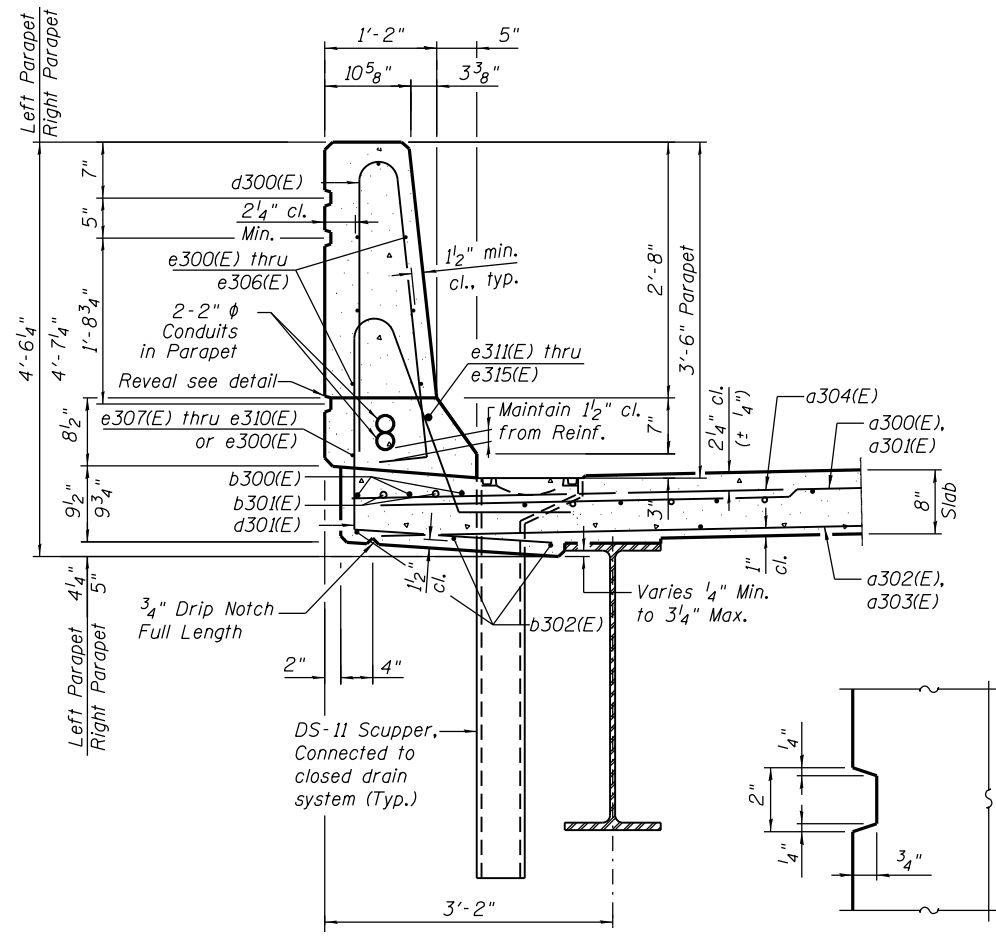
DECK CROSS SLOPE DETAIL UNIT III
**Full Superelevation of 5.40% at Sta. 1827+34.05



BAR d300(E)

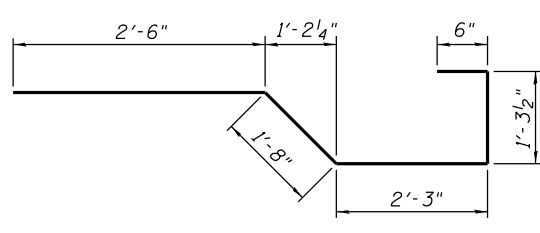


BAR d301(E)

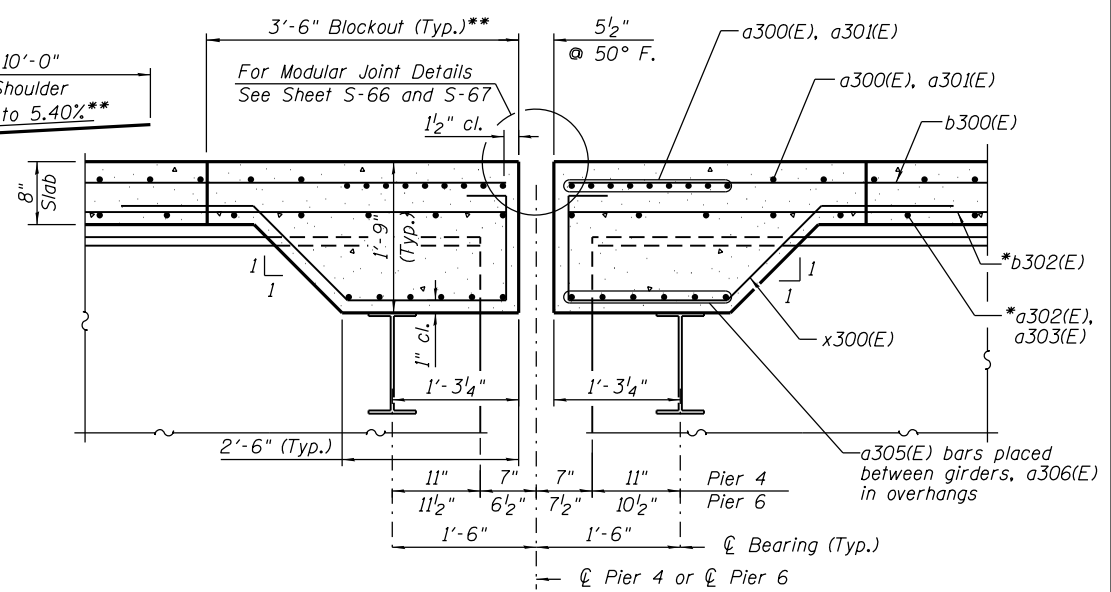


SECTION THRU PARAPET

REVEAL DETAIL



BAR x300(E)



SECTION D-D
(Horiz. Dims. @ RT L's to C Brg.)

*Bars to be adjusted in field to miss support boxes and beam webs

**Blockout dimensions to be verified by Contractor with Joint Manufacturer

0161705-60W28-5054-xsect.dgn



USER NAME = floresg	DESIGNED - JRE	REVISED
PLOT SCALE = N.T.S.	CHECKED - JPH	REVISED
PLOT DATE = 5/7/2014	DRAWN - TNP	REVISED
	CHECKED - EJO	REVISED

**STATE OF ILLINOIS
DEPARTMENT OF TRANSPORTATION**

**DECK CROSS SECTION - UNIT III
STRUCTURE NO. 016-1705**

SHEET NO. S-54 OF S-165 SHEETS

F.A.I. RTE. 90/94/290	SECTION 2013-010R	COUNTY COOK	TOTAL SHEETS 747	SHEET NO. 370
CONTRACT NO. 60W28			ILLINOIS FED. AID PROJECT	