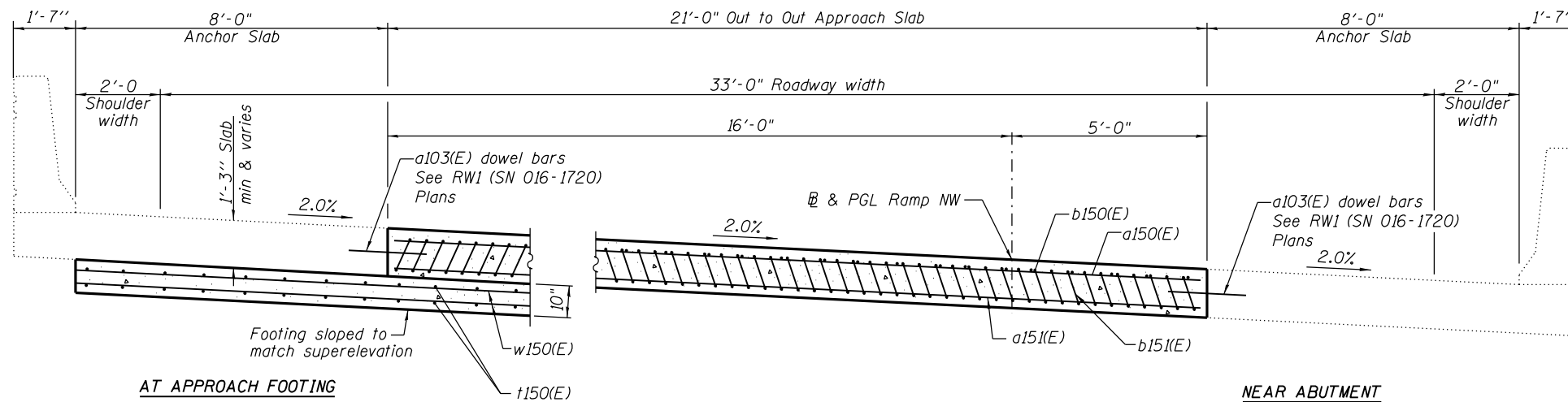


* Tilt #9 b151(E) bars as required to maintain clearance.
 *** Cost included with Concrete Superstructure.

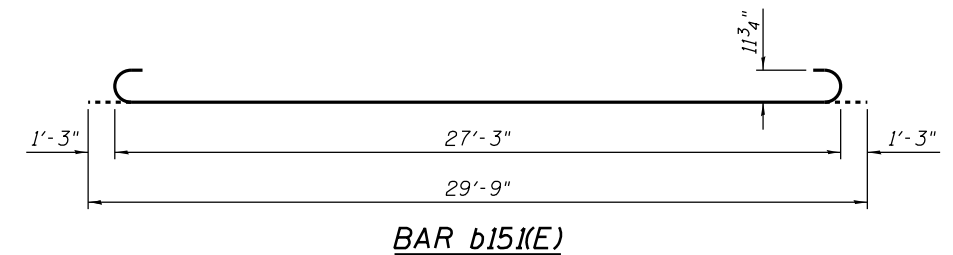
NOTES:

1. See sheet S-60 for Detail A.
2. Approach slab concrete shall be paid for as Concrete Superstructure.
3. Approach footing concrete shall be paid for as Concrete Structures.
4. Reinforcement shall be paid for as Reinforcement Bars, Epoxy Coated.
5. For v10(E) bar details, see sheet S-114.
6. The approach footing maximum applied service bearing pressure (Q_{max}) = 2.0 ksf.
7. Cost of excavation for approach footing included with Concrete Structures.
8. For bar splicer details, see sheet S-146.
9. For lightweight fill details, see Retaining Wall 1 (SN 016-1720), sheet RW1-07.
10. For Anchor Slab Details see Retaining Wall 1 (SN 016-1720) plans.



SECTION B-B

(See Plan for dimensions not shown)



BAR b151(E)

BILL OF MATERIAL

| Bar | No. | Size | Length | Shape |
|----------------------------------|-----|------|---------|-------|
| a150(E) | 25 | #4 | 20'-8" | — |
| a151(E) | 46 | #5 | 20'-8" | — |
| b150(E) | 18 | #4 | 29'-8" | — |
| b151(E) | 51 | #9 | 29'-9" | ⌋ |
| t150(E) | 76 | #4 | 9'-8" | — |
| w150(E) | 40 | #5 | 36'-8" | — |
| Concrete Superstructure | | | Cu. Yd. | 32 |
| Concrete Structures | | | Cu. Yd. | 12 |
| Reinforcement Bars, Epoxy Coated | | | Pound | 8,880 |
| Bridge Deck Grooving (Special) | | | Sq. Yd. | 70 |
| Protective Coat | | | Sq. Yd. | 70 |

0161705-60W28-5061-ApprSlabDetails.dgn



| | | |
|----------------------|----------------|---------|
| USER NAME = floresg | DESIGNED - JRE | REVISED |
| | CHECKED - JPH | REVISED |
| PLOT SCALE = N.T.S. | DRAWN - TNP | REVISED |
| PLOT DATE = 5/7/2014 | CHECKED - EJO | REVISED |

STATE OF ILLINOIS
DEPARTMENT OF TRANSPORTATION

SOUTH APPROACH SLAB DETAILS
STRUCTURE NO. 016-1705

SHEET NO. S-61 OF S-165 SHEETS

| | | | | |
|---------------------------|-----------|--------|--------------|-----------|
| F.A.I. RTE. | SECTION | COUNTY | TOTAL SHEETS | SHEET NO. |
| 90/94/290 | 2013-010R | COOK | 747 | 377 |
| CONTRACT NO. | | | 60W28 | |
| ILLINOIS FED. AID PROJECT | | | | |