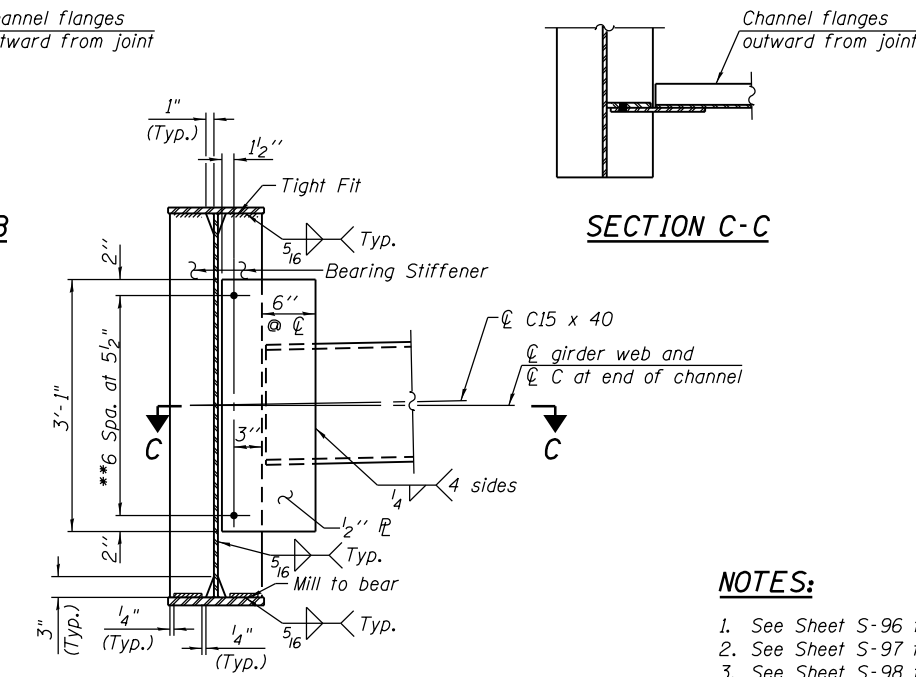
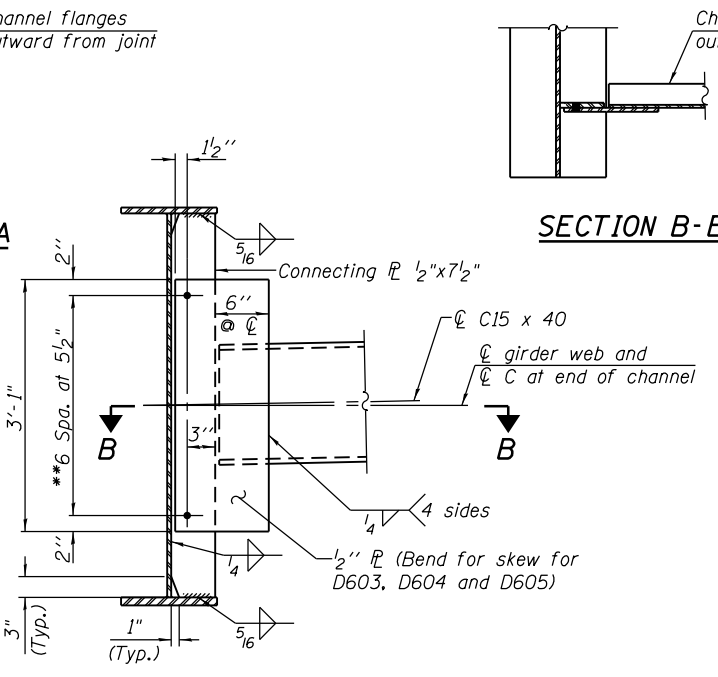
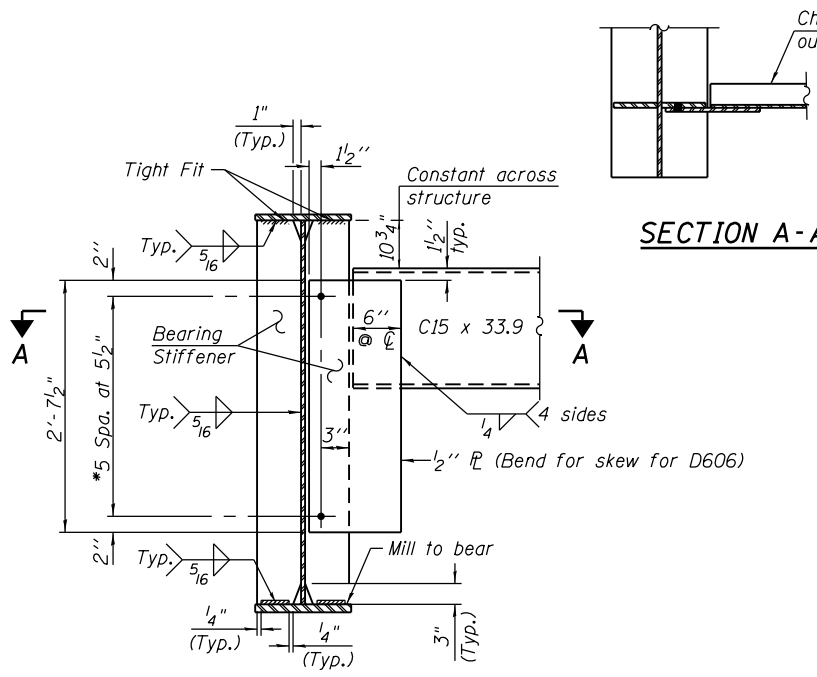


GIRDER FRAMING PLAN - UNIT VI



END DIAPHRAGM
 D601 (8 Required)
 D606 (2 Required)
 * $\frac{3}{4}$ " ϕ HS Bolts, $\frac{15}{16}$ " ϕ holes

INTERIOR DIAPHRAGM
 D602 (49 Required)
 D603 (2 Required)
 D604 (2 Required)
 D605 (2 Required)
 ** $\frac{3}{4}$ " ϕ HS bolts, $\frac{15}{16}$ " ϕ holes

INTERIOR DIAPHRAGM - D607
 (10 Required)
 ** $\frac{3}{4}$ " ϕ HS bolts, $\frac{15}{16}$ " ϕ holes

- NOTES:**
1. See Sheet S-96 for girder elevation.
 2. See Sheet S-97 for camber & top of web elevations.
 3. See Sheet S-98 for moment tables & reaction tables.
 4. See Sheet S-99 for girder bolted field splice details.
 5. Two hardened washers required for each set of oversized holes.
 6. Jacking stiffeners shall use the same size clips & fillet welds as the bearing stiffeners.

0161705-60W28-5095-FramePlan.dgn



USER NAME = floresg	DESIGNED - DD	REVISED
PLOT SCALE = N.T.S.	CHECKED - ATB	REVISED
PLOT DATE = 5/7/2014	DRAWN - MRK	REVISED
	CHECKED - DD	REVISED

**STATE OF ILLINOIS
 DEPARTMENT OF TRANSPORTATION**

**GIRDER FRAMING PLAN - UNIT VI
 STRUCTURE NO. 016-1705**

SHEET NO. S-95 OF S-165 SHEETS

F.A.I. RTE. 90/94/290	SECTION 2013-010R	COUNTY COOK	TOTAL SHEETS 747	SHEET NO. 411
CONTRACT NO. 60W28			ILLINOIS FED. AID PROJECT	