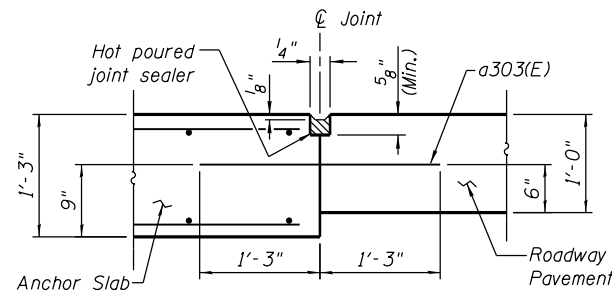


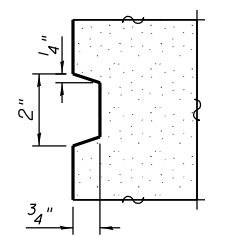
TRANSVERSE CONTRACTION JOINT

See Article 420.05 & 420.12 of the Standard Specifications

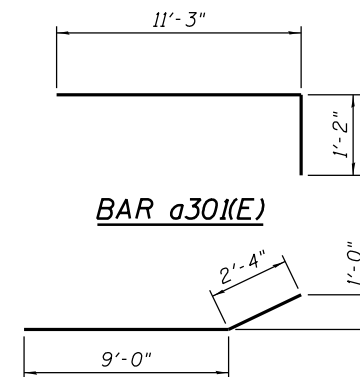


LONGITUDINAL CONSTRUCTION JOINT

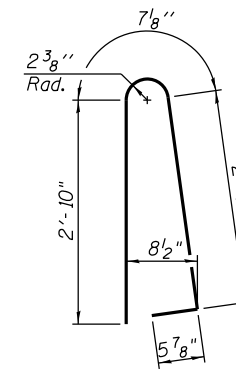
See Article 420.05 & 420.12 of the Standard Specifications



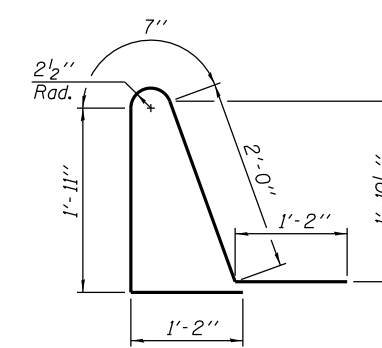
REVEAL DETAIL



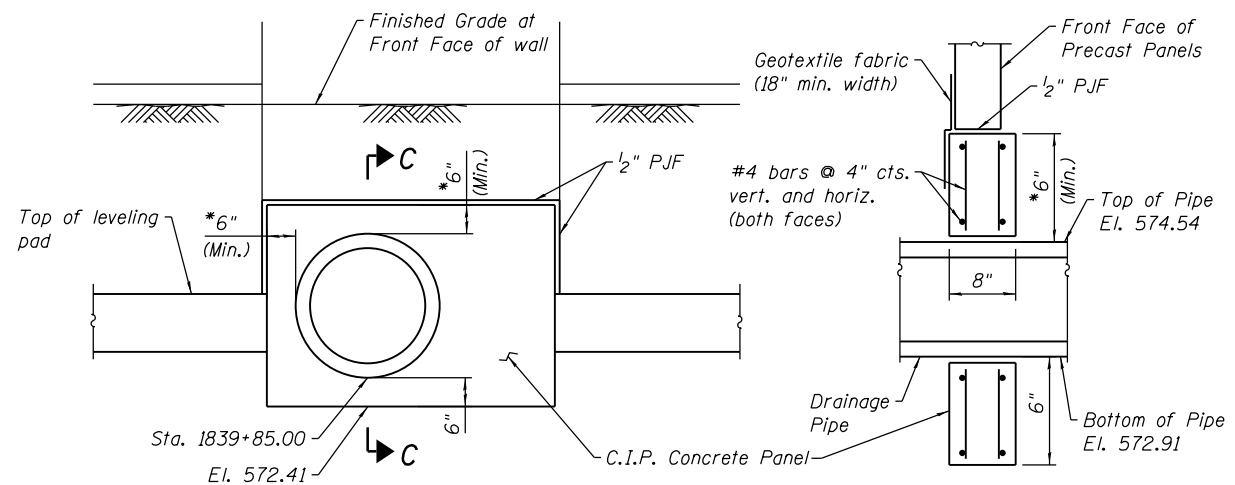
BAR a301(E)



BAR d301(E)



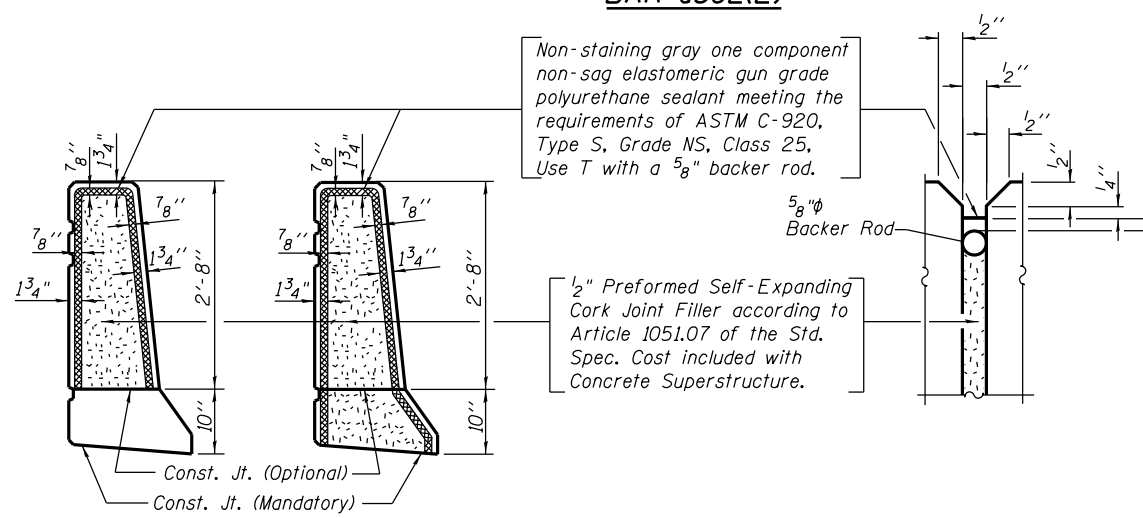
BAR d302(E)



PIPE PASS THROUGH MSE WALL DETAIL

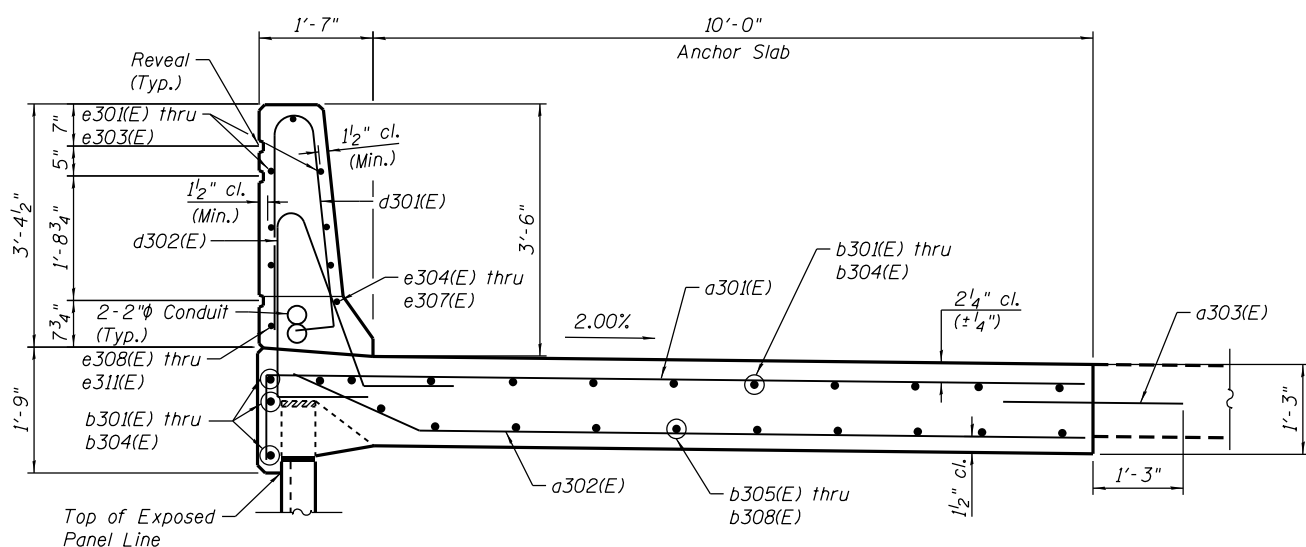
*Wall supplier to determine required dimensions and shall accommodate for wall settlement to prevent shearing of pipe.

SECTION C-C



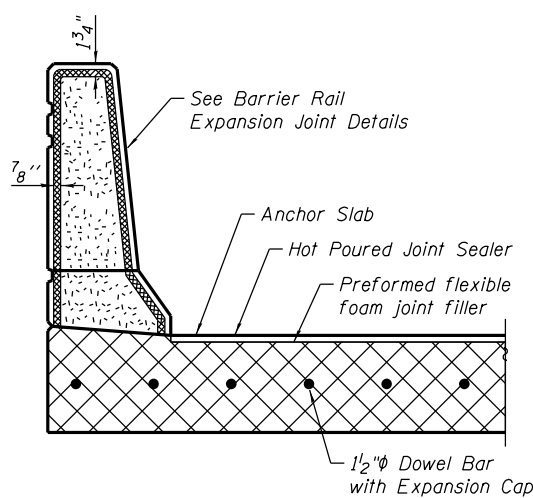
CONTRACTION EXPANSION

BARRIER RAIL JOINT DETAILS

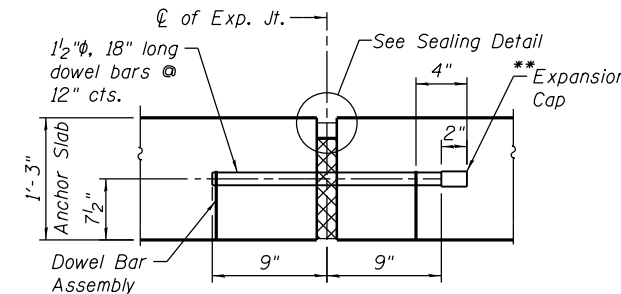


SECTION B-B

(Typical MSE Barrier Rail Section) (Facing West)



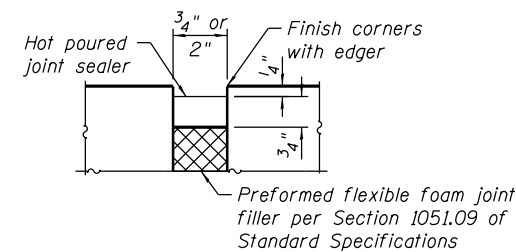
TRANSVERSE EXPANSION JOINT SECTION



ANCHOR SLAB TO ANCHOR SLAB TRANSVERSE EXPANSION JOINT

(Expansion Joint filler, sealer and Dowel Bars included in cost of Concrete Superstructure.)

** Expansion caps shall be installed on the exposed end of each dowel bar once header has been removed and the joint filler material has been installed.



SEALING DETAIL

BILL OF MATERIAL

Bar	No.	Size	Length	Shape
a301(E)	496	#7	12'-5"	
a302(E)	360	#4	11'-4"	
a303(E)	150	#8	2'-6"	
b301(E)	14	#4	29'-8"	
b302(E)	42	#4	35'-0"	
b303(E)	84	#4	31'-8"	
b304(E)	28	#4	23'-8"	
b305(E)	10	#4	29'-8"	
b306(E)	40	#4	26'-11"	
b307(E)	80	#4	24'-5"	
b308(E)	30	#4	16'-8"	
d301(E)	499	#6	6'-10"	
d302(E)	499	#6	6'-10"	
d303(E)	24	#4	1'-5"	
e301(E)	14	#4	15'-5"	
e302(E)	35	#4	19'-8"	
e303(E)	105	#4	14'-8"	
e304(E)	1	#8	31'-2"	
e305(E)	3	#8	37'-9"	
e306(E)	6	#8	34'-5"	
e307(E)	2	#8	25'-9"	
e308(E)	1	#4	31'-2"	
e309(E)	4	#4	26'-11"	
e310(E)	8	#4	24'-5"	
e311(E)	3	#4	16'-8"	
h301(E)	10	#4	20'-4"	
h302(E)	5	#4	9'-5"	
u301(E)	24	#4	3'-0"	
Protective Coat		Sq. Yd.	590	
Concrete Superstructure		Cu. Yd.	245	
Reinforcement Bars, Epoxy Coated		Pound	35,800	
Slope Wall 4"		Sq. Yd.	9	

NOTES:

1. See bridge plans (SN 016-1705) for approach slab details and civil plans for roadway details.
2. Protective Coat is applied to top of Anchor Slab, inside vertical and top faces of barrier rail, and to exposed faces of MSE coping. Apply after Bridge Deck Grooving (Special) is complete.
3. Cost of concrete, rebar, geotextile fabric, and joint filler for Pipe Pass Through are included in cost of Mechanically Stabilized Earth Retaining Wall, Special.



USER NAME = dunkerleyb	DESIGNED - DEV	REVISED
PLOT SCALE = N.T.S.	CHECKED - ATB	REVISED
PLOT DATE = 4/28/2014	DRAWN - BRD	REVISED
	CHECKED - EJO	REVISED

STATE OF ILLINOIS
DEPARTMENT OF TRANSPORTATION

DETAILS
STRUCTURE NO. 016-1722

SHEET NO. RW3-060F RW3-12 SHEETS

F.A.I. R.E. 90/94/290	SECTION 2013-010R	COUNTY COOK	TOTAL SHEETS 747	SHEET NO. 550
CONTRACT NO. 60W28			ILLINOIS FED. AID PROJECT -NUMBER-	

0161722-60W28-506-SuperStruct