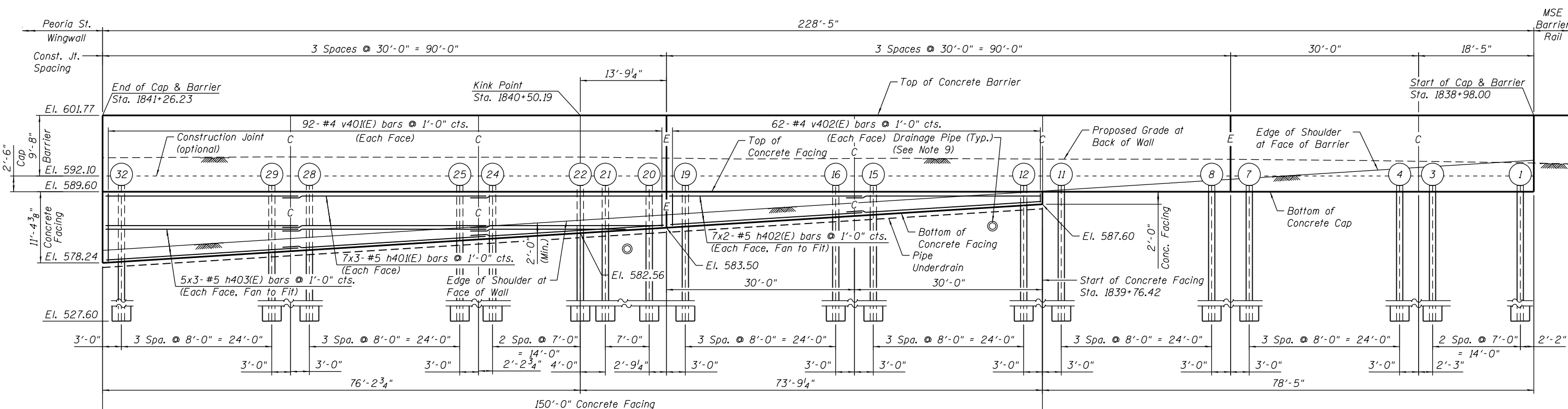
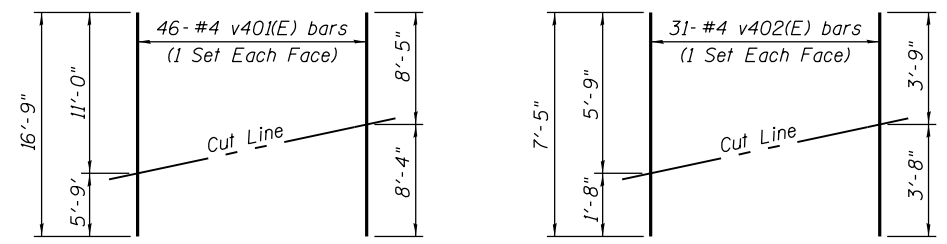


SOLDIER PILE PLAN

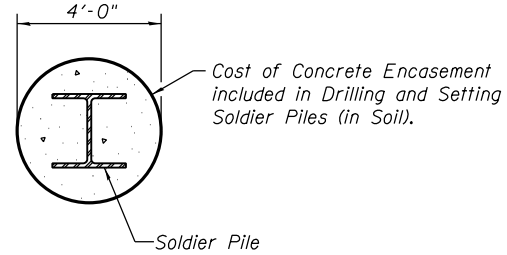


CONCRETE FACING, CAP, AND BARRIER ELEVATION
(Facing North, at Soldier Pile and Lagging Wall)

E = Expansion Joint
C = Construction Joint



FIELD CUTTING DIAGRAMS
(Cut 2 sets of each bar, one for each face)
Order bars full length. Cut as shown.



Note:
Forms for encasement may be omitted when soil conditions permit.

TYPICAL SOLDIER PILE ENCASUREMENT DETAIL

NOTES:

- Horizontal dimensions and offsets measured along front face of barrier.
- For cap and barrier details, see sheet RW4-09.
- Bars noted thus, 7x3-#4 indicates 7 lines of #4 bars with 3 lengths per line.
- For Typical Soldier Pile Wall Section, see sheet RW4-08.
- For reinforcement details, see sheet RW4-10.
- Min. Lap Lengths:
#4 bar = 2'-7"
#5 bar = 3'-3"
#6 bar = 3'-10"
- Bend h40(E) and h403(E) bars in field to fit around kink in Concrete Facing.
- Pipe Underdrain beneath Concrete facing will discharge to drainage structures at Sta. 1840+42.69 and Sta. 1841+26.37. See Table 2 on RW3-03 of Retaining Wall 3 plans. Cost included in Pipe Underdrains for Structures 4.
- Drainage structures on North side of wall discharge to drainage structures at Sta. 1839+85.00 and Sta. 1840+42.69 below concrete facing as shown. See Drainage plans for details.

0161723-60W28-507-SuperStruct



USER NAME = dunkerleyb	DESIGNED - DEV	REVISED
PLOT SCALE = N.T.S.	CHECKED - ATB	REVISED
PLOT DATE = 4/28/2014	DRAWN - BRD	REVISED
	CHECKED - EJO	REVISED

STATE OF ILLINOIS
DEPARTMENT OF TRANSPORTATION

CONCRETE FACING ELEVATION & DETAILS
STRUCTURE NO. 016-1723
SHEET NO. RW4-07OF RW4-15 SHEETS

F.A.I. RTE. 90/94/290	SECTION 2013-010R	COUNTY COOK	TOTAL SHEETS 747	SHEET NO. 561
CONTRACT NO. 60W28			ILLINOIS FED. AID PROJECT -NUMBER-	