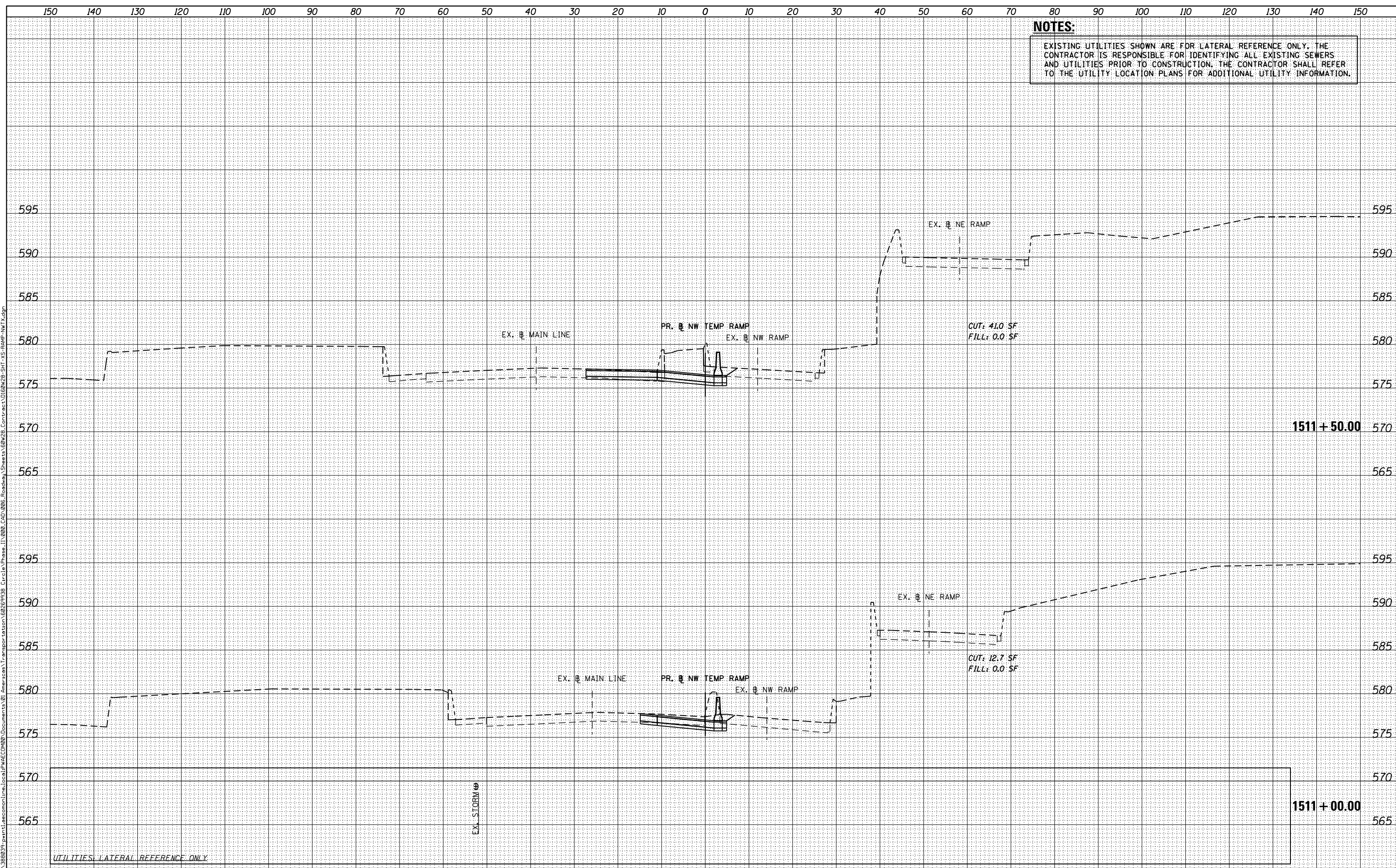


**NOTES:**

EXISTING UTILITIES SHOWN ARE FOR LATERAL REFERENCE ONLY. THE CONTRACTOR IS RESPONSIBLE FOR IDENTIFYING ALL EXISTING SEWERS AND UTILITIES PRIOR TO CONSTRUCTION. THE CONTRACTOR SHALL REFER TO THE UTILITY LOCATION PLANS FOR ADDITIONAL UTILITY INFORMATION.



BY	DATE

BY	DATE

BY	DATE

BY	DATE

FILE PATH = p:\38803\p\m\asc\comline\local\AEC\DWG\Documents\01 America's Transportation\60289938 Circle Phase II\000\_CDD\_006\_Roadway\Sheets\60W28-SHT-XS-RAMP-NW.TXDgn



D160W28-SHT-XS-RAMP-NW.TXDgn	DESIGNED -	NWMP / AJP	REVISED -
USER NAME = maronik	DRAWN -	NWMP / AJP	REVISED -
PLOT SCALE = 10.0000' / in.	CHECKED -	KMM	REVISED -
PLOT DATE = 4/25/2014	DATE -	04/28/14	REVISED -

**STATE OF ILLINOIS  
DEPARTMENT OF TRANSPORTATION**

**CROSS SECTIONS  
RAMP NW (NB TEMP)**

SCALE: 1:5V, 1:10H SHEET 5 OF 8 SHEETS STA. 1511+00.00 TO STA. 1511+50.00

F.A.I. RTE.	SECTION	COUNTY	TOTAL SHEETS	SHEET NO.
90/94/290	2013-010R	COOK	747	701
				CONTRACT NO. 60W28
ILLINOIS FED. AID PROJECT				