

STATE OF ILLINOIS
DEPARTMENT OF TRANSPORTATION

F.A.P. RTE.	SECTION	COUNTY	TOTAL SHEETS	SHEET NO.
317	(23)RS-4,(24RB)RS-1	FORD	33	1
		ILLINOIS	CONTRACT NO. 66A81	

INDEX OF SHEETS

- 1 COVER SHEET
- 2 GENERAL NOTES
- 3-5 SUMMARY OF QUANTITIES
- 6 TYPICALS
- 7-8 SCHEDULES
- 9 LAYOUT MAP
- 10-11 PAVEMENT MARKING SHEETS
- 12-13 DETAILS

LIST OF ILLINOIS DOT HIGHWAY STANDARDS

000001-07	STANDARD SYMBOLS, ABBREVIATIONS AND PATTERNS
001006	DECIMAL OF AN INCH AND OF A FOOT
406201-01	MAILBOX TURNOUT
642006	SHOULDER RUMBLE STRIPS, 8 INCH
667101-02	PERMANENT SURVEY MARKERS
701001-02	OFF-ROAD OPERATIONS 2L, 2W, MORE THAN 15' (4.5 m) AWAY
701006-05	OFF-ROAD OPERATIONS 2L, 2W, 15' (4.5 m) TO 24' (600 mm) FROM PAVEMENT EDGE
701011-04	OFF-ROAD MOVING OPERATIONS 2L, 2W, DAY ONLY
701301-04	LANE CLOSURE, 2L, 2W, SHORT TIME OPERATIONS
701306-04	LANE CLOSURE, 2L, 2W, SLOW MOVING OPERATIONS DAY ONLY, FOR SPEEDS ≥ 45 MPH
701311-03	LANE CLOSURE, 2L, 2W, MOVING OPERATIONS - DAY ONLY
701901-08	TRAFFIC CONTROL DEVICES
781001-04	TYPICAL APPLICATIONS RAISED REFLECTIVE PAVEMENT MARKERS

PROPOSED
HIGHWAY PLANS

FAP 317 ROUTE (US 24 / IL 115)
SECTION (23)RS-4,(24RB)RS-1
PROJECT NHPP-MXOG(334)
3P MILLING & RESURFACING
FORD COUNTY

C-93-038-11

BRIDGE OMISSION
S.N. 027-0081

3-SPAN CAST-IN-PLACE CONC.
STA. 1197+36.07 TO
STA. 1198+87.93

BRIDGE OMISSION
S.N. 027-0079

3-SPAN
CAST-IN-PLACE CONC.
STA. 1055+99.50 TO
STA. 1057+08.50

S.N. 027-2005

STA. 993+25
EXISTING DOUBLE
8'x9' CAST-IN-PLACE
BOX CULVERT

PROJECT BEGINS

STA. 983+62.46

S.N. 027-2006

STA. 1030+62.5
EXISTING DOUBLE
7'x5' CAST-IN-PLACE
BOX CULVERT

S.N. 027-2529

STA. 1101+75
EXISTING TRIPLE
4'x2' PRC BOX CULVERT

BRIDGE OMISSION
S.N. 027-0080

3 SPAN
CAST-IN-PLACE CONC.
STA. 1165+21.68 TO
STA. 1166+74.33

S.N. 027-2530

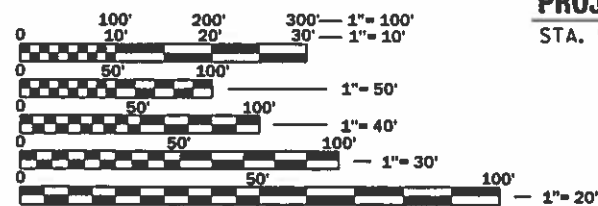
STA. 1182+02
EXISTING 10'x4'
CAST-IN-PLACE
BOX CULVERT

S.N. 027-2532

STA. 1273+58
EXISTING 7'x5'
PRC BOX CULVERT

S.N. 027-2531

STA. 1194+07
EXISTING 7'x7'
PRC BOX CULVERT

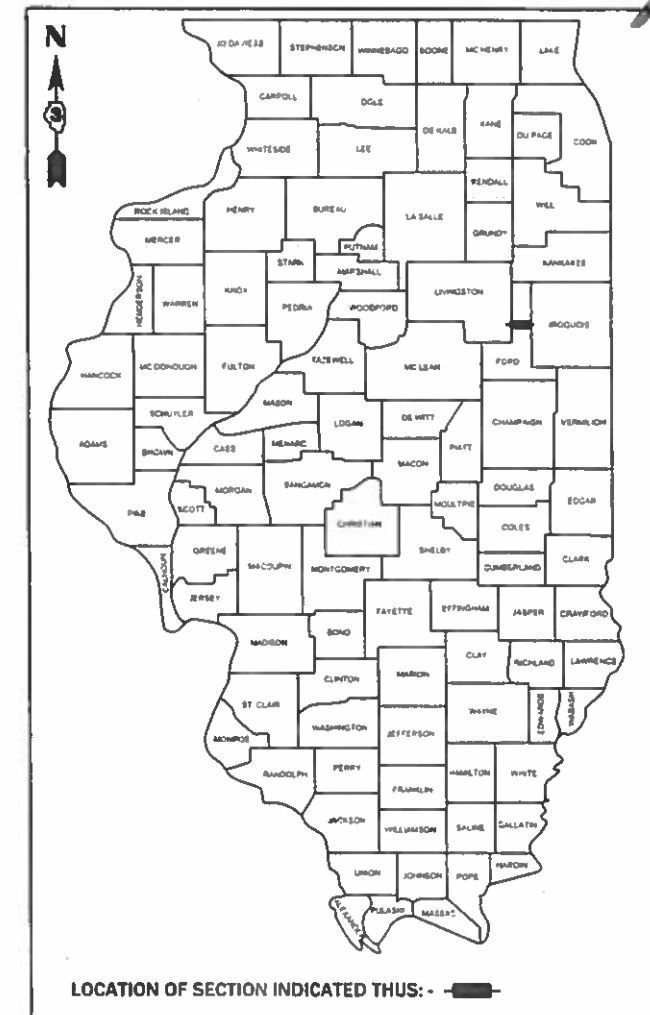


FULL SIZE PLANS HAVE BEEN PREPARED USING STANDARD ENGINEERING SCALES. REDUCED SIZED PLANS WILL NOT CONFORM TO STANDARD SCALES. IN MAKING MEASUREMENTS ON REDUCED PLANS, THE ABOVE SCALES MAY BE USED.

J.U.L.I.E.
JOINT UTILITY LOCATION INFORMATION FOR EXCAVATION
1-800-892-0123
OR 811

PROJECT ENGINEER: JOE KANNEL, P.E.
UNIT CHIEF: MICHELE LINDEMANN, P.E.
DISTRICT 3 NO. (815) 434-6131
CONTRACT NO. 66A81

GROSS LENGTH = 31,712.54 FT. = 6.006 MI
NET LENGTH = 31,299.03 FT. = 5.928 MI



PROJECT ENDS STA. 1300+75
OTHER PRINCIPAL ARTERIAL 2017 ADT - 2350
P.V. = 75.1% S.U. = 6.8% M.U. = 18.1%

STATE OF ILLINOIS
DEPARTMENT OF TRANSPORTATION
SUBMITTED 5/24 2019
Regional Engineer
June 14 2019
Engineer of Design and Environment
June 14 2019
Director of Highways Project Implementation

PRINTED BY THE AUTHORITY
OF THE STATE OF ILLINOIS

GENERAL NOTES

THE THICKNESS OF HMA SHOWN ON THE PLANS IS THE NOMINAL THICKNESS. DEVIATIONS FROM THE NOMINAL THICKNESS WILL BE PERMITTED WHEN SUCH DEVIATIONS OCCUR DUE TO IRREGULARITIES IN THE EXISTING SURFACE OR BASE ON WHICH THE HMA IS PLACED.

THE HMA SURFACE OF ALL MAILBOX TURNOUTS, PRIVATE ENTRANCES, COMMERCIAL ENTRANCES, AND SIDE ROADS SHALL BE MADE NEATLY, IN A WORKMANLIKE MANNER, AND SHALL ACCURATELY CONFORM TO THE SHAPES AND DIMENSIONS SHOWN ON THE PLAN DETAILS. IF REQUIRED BY THE ENGINEER, THE CONTRACTOR SHALL SAW CUT THE HMA SURFACE TO CONFORM TO THE SHAPES AND DIMENSIONS SHOWN ON THE PLAN DETAILS. THIS WORK WILL BE INCLUDED IN THE COST OF THE HMA SURFACE.

EXCEPT AS NOTED ON THE PLANS, PAVEMENT GRADES SHOWN ARE AT THE TOP OF PAVEMENT SURFACES.

THE ENGINEER WILL BE THE SOLE JUDGE CONCERNING CURING TIME FOR THE VARIOUS HMA LIFTS.

FOR STABILIZATION, ALL TYPE III BARRICADES WILL REQUIRE A MINIMUM OF FOUR SAND BAGS PER BARRICADE.

SEEDING WILL NOT BE PERMITTED AT ANY TIME WHEN THE GROUND IS FROZEN, WET, OR IN AN UNTILLABLE CONDITION. LOCATIONS TO BE SEEDED WILL BE DETERMINED BY THE ENGINEER.

THE FINISHED EARTHWORK SHALL HAVE A VEGETATION SUSTAINING SOIL COVERING THE TOP FOUR INCHES (100 MILLIMETERS) IN AREAS TO BE SEEDED OR SODDED. THE VEGETATION SUSTAINING SOIL REQUIRED WILL NOT BE PAID FOR SEPARATELY BUT WILL BE INCLUDED IN THE COST OF FURNISHED EXCAVATION.

ALL EXCAVATED MATERIAL, WHICH INCLUDES DIGGING OR GRADING OF ANY SOIL OR FILL MATERIAL, WITH THE EXCEPTION OF AGGREGATE FILLS, MUST BE INCORPORATED WITHIN THE IDOT RIGHT OF WAY DUE TO ENVIRONMENTAL DOCUMENTATION REQUIREMENTS.

ON EXISTING PAVEMENT WHICH MAY BE SUPERELEVATED, THE NEW HMA PAVEMENT SHALL BE BUILT WITH THE SAME SUPERELEVATION UNLESS NEW SUPERELEVATION RATES ARE GIVEN ON THE PLANS.

ALL ELEVATIONS REFERRING TO U.S.G.S. MEAN SEA LEVEL DATUM.

ANY REFERENCE TO A STANDARD IN THESE PLANS SHALL BE INTERPRETED TO MEAN THE EDITION AS INDICATED BY THE SUBNUMBER SHOWN IN THE LIST OF STANDARDS OR THE COPY INCLUDED IN THESE PLANS.

THE FOLLOWING RATES OF APPLICATION HAVE BEEN USED IN CALCULATING PLAN QUANTITIES:

GRANULAR MATERIALS	2.05	TONS / CU YD
HMA RESURFACING	112	LBS / SQ YD / IN
SHORT TERM PAVEMENT MARKING	10	FT /100 FT OF APPLICATION
MIX FOR CRACKS, JTS & FLGWYS	0.0003	TONS / SQ YD
LEVEL BINDER (HAND METHOD)	0.0005	TONS / SQ YD
SUPPLEMENTAL WATERING	3	GAL / SQ YD / APPLICATION
CALCIUM CHLORIDE	2	LB / SQ YD / APPLICATION
AGGREGATE DITCH CHECKS	5	TONS AGGREGATE

THE CONTRACTOR SHALL CONTACT JULIE AT LEAST 48 HOURS PRIOR TO EXCAVATION TO DETERMINE WHICH UTILITIES ARE IN THE AREA.

COMMITMENTS

LOCATION(S):	ENTIRE PROJECT	ENTIRE PROJECT
MIXTURE USE(S):	HMA LEVEL BINDER	HMA SURFACE
BINDER GRADE (PG):	PG 64-22	PG 64-22
DESIGN AIR VOIDS:	4.0% @ N50	4.0% @ N50
MIXTURE COMPOSITION: (MIXTURE GRADATION)	IL 9.5	IL 9.5
FRICTION AGGREGATE:	NA	MIXTURE C
MIXTURE WEIGHT:	112.0 LB/SY/IN	112.0 LB/SY/IN
QUALITY MANAGEMENT PROGRAM:	QCP	QCP
SUBLOT SIZE:	1000 TONS	1000 TONS
DENSITY TEST METHOD:	CORES	CORES

STATE OF ILLINOIS
DEPARTMENT OF TRANSPORTATION
DISTRICT THREE
AS BUILT INFORMATION

SUPERVISING CONSTRUCTION FIELD ENGINEER

RESIDENT ENGINEER / TECHNICIAN

START & END DATES
OF CONSTRUCTION:

INSPECTORS:

STATE OF ILLINOIS
DEPARTMENT OF TRANSPORTATION
DISTRICT THREE

PREPARED BY: *Tom Beaulieu*
DISTRICT STUDIES & PLANS ENGINEER

DATE: 5/24/19

EXAMINED BY: *Ryan Vidler AH*
DISTRICT CONSTRUCTION ENGINEER

Michael Short
DISTRICT MATERIALS ENGINEER

John H. [Signature]
DISTRICT OPERATIONS ENGINEER

FILE NAME =	USER NAME = corcoranlm	DESIGNED -	REVISED -	STATE OF ILLINOIS DEPARTMENT OF TRANSPORTATION	GENERAL NOTES	F.A.P. RTE.	SECTION	COUNTY	TOTAL SHEETS	SHEET NO.
c:\pw_work\pwid\corcoranlm\0247008\0366A81-shr.dgn	DRAWN -	REVISED -	317			(23)RS-4,(24RB)RS-1	FORD	13	2	
PLOT SCALE = 100.0000' / in.	CHECKED -	REVISED -	CONTRACT NO.							
PLOT DATE = 5/23/2019	DATE -	REVISED -	ILLINOIS FED AID PROJECT							
SMODELNAME\$				SCALE:	SHEET	OF	SHEETS	STA.	TO STA.	

CODE NO.	ITEM	UNIT	TOTAL QUANTITY	80% FED 20% STATE	
				CONSTR. CODE	
				ROADWAY	RURAL
20400800	FURNISHED EXCAVATION	CU YD	45	45	
25000210	SEEDING, CLASS 2A	ACRE	0.13	0.13	
25000400	NITROGEN FERTILIZER NUTRIENT	POUND	12	12	
25000500	PHOSPHORUS FERTILIZER NUTRIENT	POUND	12	12	
25000600	POTASSIUM FERTILIZER NUTRIENT	POUND	12	12	
25100630	EROSION CONTROL BLANKET	SQ YD	488	488	
40200800	AGGREGATE SURFACE COURSE, TYPE B	TON	6	6	
40600290	BITUMINOUS MATERIALS (TACK COAT)	POUND	67782	67782	
40600400	MIXTURE FOR CRACKS, JOINTS, AND FLANGEWAYS	TON	30	30	
40600525	LEVELING BINDER (HAND METHOD), N50	TON	50	50	
40600625	LEVELING BINDER (MACHINE METHOD), N50	TON	11230	11230	
40600990	TEMPORARY RAMP	SQ YD	245	245	
40603310	HOT-MIX ASPHALT SURFACE COURSE, MIX "C", N50	TON	9827	9827	
40800050	INCIDENTAL HOT-MIX ASPHALT SURFACING	TON	221	221	

Δ SPECIALTY ITEMS

FILE NAME =	USER NAME = corcoranlm	DESIGNED -	REVISED -
p:\planroom.dot.illinois.gov\PIDOT\Documents\DOT Offices\District 3\Projects\0366A\DRAWING\0366A81-sht-500.dgn		CHECKED -	REVISED -
		DATE -	REVISED -

**STATE OF ILLINOIS
DEPARTMENT OF TRANSPORTATION**

SUMMARY OF QUANTITIES

SCALE: SHEET NO. OF SHEETS STA. TO STA.

F.A.P. RTE.	SECTION	COUNTY	TOTAL SHEETS	SHEET NO.
317	(23)RS-4,(24)BRS-1	FORD	13	3
			CONTRACT NO. 66A81	
ILLINOIS FED. AID PROJECT				

CODE NO.	ITEM	UNIT	TOTAL QUANTITY	CONSTR. CODE	
				80% FED 20% STATE	ROADWAY 0005 RURAL
44000164	HOT-MIX ASPHALT SURFACE REMOVAL , 3 3/4"	SQ YD	98778		98778
48101200	AGGREGATE SHOULDERS , TYPE B	TON	2392		2392
64200108	SHOULDER RUMBLE STRIPS, 8 INCH	FOOT	62597		62597
66700205	PERMANENT SURVEY MARKERS, TYPE I	EACH	15		15
67000400	ENGINEER'S FIELD OFFICE, TYPE A	CAL MO	6		6
67100100	MOBILIZATION	L SUM	1		1
70100460	TRAFFIC CONTROL AND PROTECTION, STANDARD 701306	L SUM	1		1
70300100	SHORT TERM PAVEMENT MARKING	FOOT	6376		6376
70300150	SHORT TERM PAVEMENT MARKING REMOVAL	SQ FT	1063		1063
70300220	TEMPORARY PAVEMENT MARKING - LINE 4"	FOOT	66035		66035
70300240	TEMPORARY PAVEMENT MARKING - LINE 6"	FOOT	7961		7961
70300250	TEMPORARY PAVEMENT MARKING - LINE 8"	FOOT	254		254
70300260	TEMPORARY PAVEMENT MARKING - LINE 12"	FOOT	102		102
70300280	TEMPORARY PAVEMENT MARKING - LINE 24"	FOOT	72		72

Δ SPECIALTY ITEMS

FILE NAME =	USER NAME = corcoranim	DESIGNED -	REVISED -
pw:\planroom.dot,illinois.gov:PWIDOT\Documents\DOT Offices\District 3\Projects\0366A81\Drawings\0366A81-sht-500.dgn		CHECKED -	REVISED -
		DATE -	REVISED -

**STATE OF ILLINOIS
DEPARTMENT OF TRANSPORTATION**

SUMMARY OF QUANTITIES

SCALE: SHEET OF SHEETS STA. TO STA.

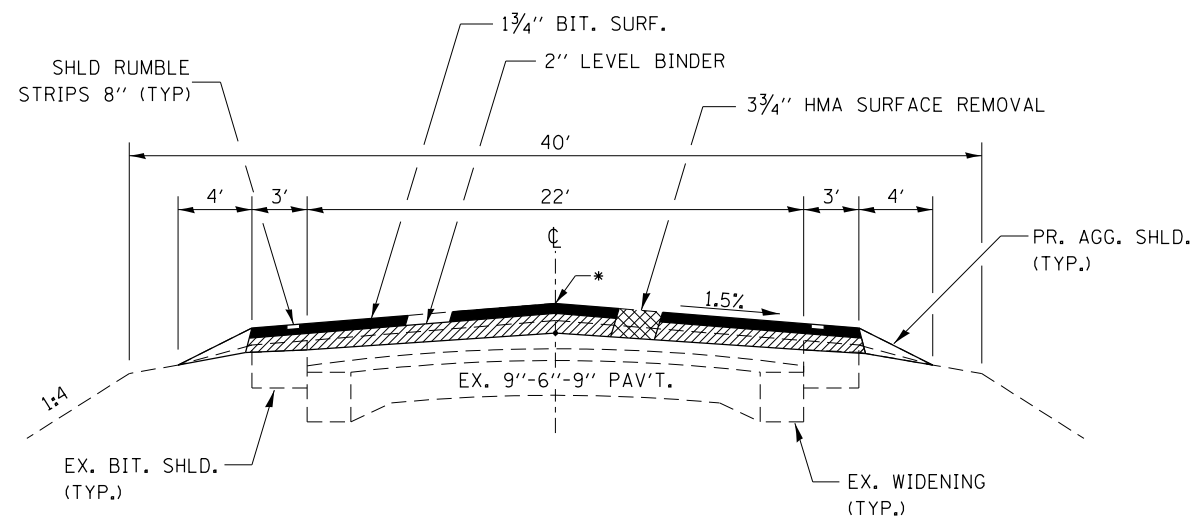
F.A.P. RTE.	SECTION	COUNTY	TOTAL SHEETS	SHEET NO.
317	(23)RS-4,(24)RS-1	FORD	13	4
			CONTRACT NO. 66A81	
ILLINOIS FED. AID PROJECT				

CODE NO.	ITEM	UNIT	TOTAL QUANTITY	CONSTR. CODE	
				ROADWAY	RURAL
				80% FED	20% STATE
				0005	
Δ	78000500 THERMOPLASTIC PAVEMENT MARKING - LINE 8"	FOOT	254	254	
Δ	78000600 THERMOPLASTIC PAVEMENT MARKING - LINE 12"	FOOT	102	102	
Δ	78000650 THERMOPLASTIC PAVEMENT MARKING - LINE 24"	FOOT	72	72	
Δ	78001110 PAINT PAVEMENT MARKING - LINE 4"	FOOT	132070	132070	
Δ	78001130 PAINT PAVEMENT MARKING - LINE 6"	FOOT	16018	16018	
Δ	78100100 RAISED REFLECTIVE PAVEMENT MARKER	EACH	394	394	
	78300200 RAISED REFLECTIVE PAVEMENT MARKER REMOVAL	EACH	394	394	
	X0327980 PAVEMENT MARKING REMOVAL - WATER BLASTING	SQ FT	26348	26348	
	X4401198 HOT-MIX ASPHALT SURFACE REMOVAL, VARIABLE DEPTH	SQ YD	2318	2318	
	Z0030850 TEMPORARY INFORMATION SIGNING	SQ FT	84	84	
	Z0033700 LONGITUDINAL JOINT SEALANT	FOOT	63560	63560	
∅	Z0076600 TRAINEES	hour	2000	2000	
	Z0034105 MATERIAL TRANSFER DEVICE	TON	21057	21057	
∅	Z0076604 TRAINEES - TRAINING PROGRAM GRADUATE	hour	2000	2000	

Δ SPECIALTY ITEMS

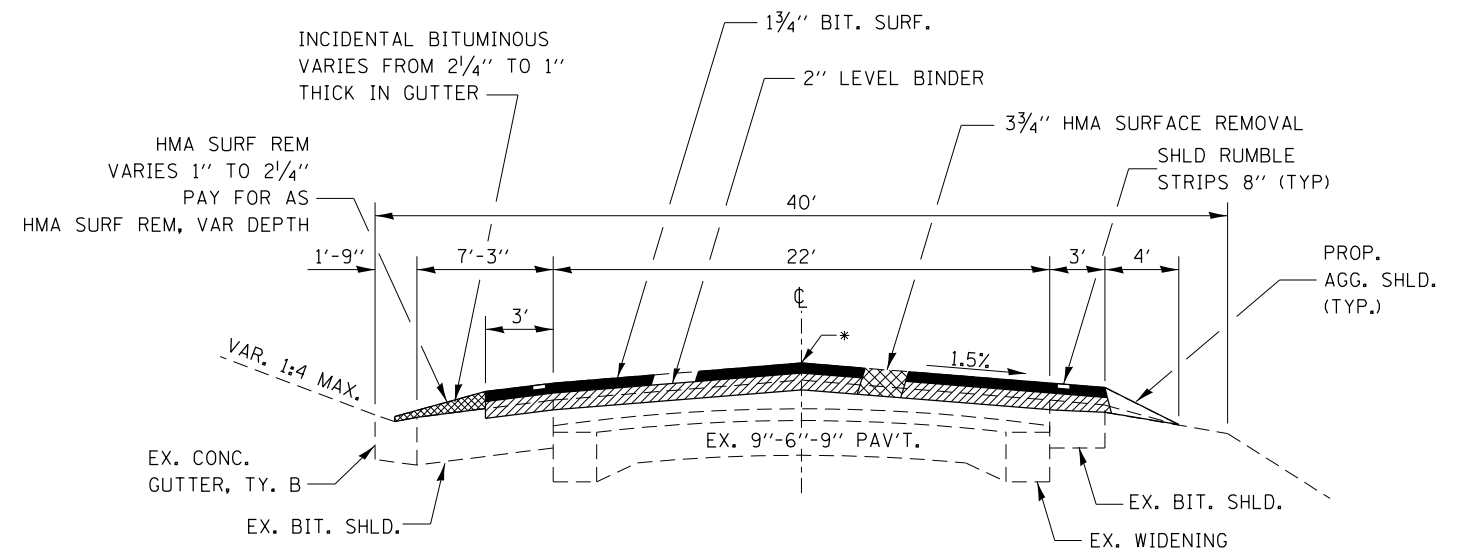
∅ 0042

FILE NAME =	USER NAME = corcoranlm	DESIGNED -	REVISED -	STATE OF ILLINOIS DEPARTMENT OF TRANSPORTATION	SUMMARY OF QUANTITIES				F.A.P. RTE.	SECTION	COUNTY	TOTAL SHEETS	SHEET NO.
pw:\planroom.dot.illinois.gov\PIDOT\Documents\IDOT Offices\District 3\Projects\0366A81\Drawings\0366A81-sht-500.dgn		DRAWN	REVISED -		317	(23)RS-4,(24)RS-1	FORD	13	5				
PLOT SCALE = 100.0000' / 1in.	CHECKED -	REVISED -							CONTRACT NO. 66A81				
PLOT DATE = 5/24/2019	DATE -	REVISED -			SCALE:	SHEET	OF	SHEETS	STA.	TO	STA.	ILLINOIS FED. AID PROJECT	



PROPOSED TYPICAL SECTION

STA. 983+62.46 TO 1055+99.50
 BRIDGE OMISSION 1055+99.50 TO STA. 1057+08.50
 STA. 1057+08.50 TO STA. 1076+30
 STA. 1081+70 TO STA. 1165+21.68
 BRIDGE OMISSION 1165+21.68 TO STA. 1166+74.33
 STA. 1166+74.33 TO STA. 1197+36.07
 BRIDGE OMISSION STA. 1197+36.07 TO STA. 1198+87.93
 STA. 1198+87.93 TO STA. 1300+75



PROPOSED TYPICAL SECTION

STA. 1076+30 TO STA. 1081+70

* LONGITUDINAL JOINT SEAL UNDER BOTH THE SURFACE AND BINDER LIFT

FILE NAME =	USER NAME = corcoranlm	DESIGNED -	REVISED -	STATE OF ILLINOIS DEPARTMENT OF TRANSPORTATION	TYPICAL SECTIONS			F.A.P. RTE.	SECTION	COUNTY	TOTAL SHEETS	SHEET NO.
p:\planroom.dot.illinois.gov\PIDOT\Documents\IDOT Offices\District 3\Projects\0366A\BID\Drawings\0366A81-sht-typical.dgn		REVISION	REVISION					317	(23)RS-4,(24)BRS-1	FORD	13	6
PLOT SCALE = 100.0000' / in.	CHECKED -	REVISED -	REVISED -		CONTRACT NO. 66A81							
PLOT DATE = 5/24/2019	DATE -	REVISED -	REVISED -		SCALE:	SHEET	OF	SHEETS	STA.	TO	STA.	ILLINOIS FED. AID PROJECT

RESURFACING SCHEDULE																
LOCATION			LENGTH	AREA	HMA SURF CSE	LEVEL BIND (MM)	INC BIT SURF	HMA SURF REM VAR DEPTH	HMA SURF REM 3-3/4"	LONG JOINT SEAL	BIT MAT (TACK COAT)	MIX FOR CRACKS, JOINTS, & FLGWYS	LEVEL BINDER (HM)	SHLD RUMBLE STRIPS 8"	AGG SHLD TY B	TEMP RAMP
STA	TO	STA														
US 24																
983+62.46	TO	1055+99.50	7237.04	22515	2206.5	2521.7		22515	14474	15197.6	6.8	11.26	14474	549.5	30.6	
BRIDGE OMISSION - SN 027-0079																
1055+99.50	TO	1057+08.50	109													
1057+08.50	TO	1076+30.00	1921.5	5978	585.8	669.5		5978	3844	4035.2	1.8	2.99	3843	145.9	30.6	
1076+30.00	TO	1081+70.00	540	1680	164.6	188.2	27	300	1080	1134	0.5	0.84	1080	20.5		
1081+70.00	TO	1165+21.68	8351.68	25983	2546.3	2910.1		25983	16704	17538.5	7.8	12.99	16703	634.1	30.6	
BRIDGE OMISSION - SN 027-2080																
1165+21.68	TO	1166+74.33	152.65													
1166+74.33	TO	1197+36.07	3061.74	9525	933.5	1066.8		9525	6124	6429.4	2.9	4.76	6123	232.5	61.2	
BRIDGE OMISSION - SN 027-2081																
1197+36.07	TO	1198+87.93	151.86													
1198+87.93	TO	1300+75.00	10187.07	31693	3105.9	3549.6		31693	20374	21392.8	9.5	15.85	20374	773.5	30.6	
IL 115 NORTH LEG																
02+11.00	TO	04+06.32	195.32	1457	142.8	163.2		1457	390	983.5	0.4	0.73		14.8	30.6	
IL 115 SOUTH LEG																
02+11.00		04+95.96	284.96	1440	141.1	161.3		1440	570	972	0.4	0.72		21.6	30.6	
TOTAL					9826.5	11230.4	27	300	98778	63560	67683	30.1	50.14	62597	2392.4	244.8

SIDEROAD AND ENTRANCE SCHEDULE															
STA.	SIDE	TYPE	MATERIAL	WIDTH	HMA SURF REM	INC BIT SURF	AGG SURF CSE	BIT MAT (TACK COAT)	FURN EXC	SEED CL 2A	EROSION CONTROL BLANKET	NIT FERT NUT	PHOS FERT NUT	POT FERT NUT	
					VAR DEPTH	TON	TON	POUND	CU YD	ACRE	SQ YD	POUND	POUND	POUND	
				FOOT	SQ YD	TON	TON	POUND	CU YD	ACRE	SQ YD	POUND	POUND	POUND	
983+92	LT	SR	A3	17	100	9.2		5	2	0.006	29.3	0.5	0.5	0.5	
983+92	RT	SR	A3	21	113	10.4		6	2	0.006	29.3	0.5	0.5	0.5	
1036+21	LT	SR	A3	18	103	9.5		5	2	0.006	29.3	0.5	0.5	0.5	
1036+23	RT	SR	A3	16	96	8.9		5	2	0.006	29.3	0.5	0.5	0.5	
1078+06	LT	PE	NO WORK												
1080+13	LT	PE	NO WORK												
1082+16	LT	PE	NO WORK												
1084+95	LT	PE	AGG W/ HMA	14	27	2.5	1	1	1	0.002	10.7	0.2	0.2	0.2	
1089+13	LT	SR	A3	17	100	9.2		5	2	0.006	29.3	0.5	0.5	0.5	
1089+13	RT	SR	A3	17	100	9.2		5	2	0.006	29.3	0.5	0.5	0.5	
1141+06.77	LT	SR	HMA	22	741	68.5		37	13	0.045	29.3	4.0	4.0	4.0	
1172+81	LT	PE	AGG W/ HMA	14	27	2.5	1	1	1	0.002	10.7	0.2	0.2	0.2	
1194+34	RT	SR	A3	18	103	9.5		5	2	0.006	29.3	0.5	0.5	0.5	
1238+70	RT	PE	AGG W/ HMA	14	27	2.5	1	1	1	0.002	10.7	0.2	0.2	0.2	
1238+91	RT	MBTO	BIT.		20.4	1.9		1	2	0.005	24.0	0.4	0.4	0.4	
1246+97	LT	SR	A3	22	116	10.7		6	2	0.006	29.3	0.5	0.5	0.5	
1246+97	RT	SR	A3	23	120	11.1		6	2	0.006	29.3	0.5	0.5	0.5	
1255+57	RT	MBTO	HMA		20.4	1.9		1	2	0.005	24.0	0.4	0.4	0.4	
1255+78	RT	PE	AGG W/ HMA	14	27	2.5	1	1	1	0.002	10.7	0.2	0.2	0.2	
1267+00	LT	PE	AGG W/ HMA	14	27	2.5	1	1	1	0.002	10.7	0.2	0.2	0.2	
1279+77	RT	MBTO	HMA		20.4	1.9		1	2	0.005	24.0	0.4	0.4	0.4	
1279+94	RT	PE	AGG W/ HMA	14	27	2.5	1	1	1	0.002	10.7	0.2	0.2	0.2	
1300+35	RT	SR	A3	18	103	9.5		5	2	0.002	29.3	0.2	0.2	0.2	
1300+38	LT	SR	GRAVEL	13		8			2	0.002	29.3	0.2	0.2	0.2	
TOTAL				306	2018	194.4	6	99	45	0.13	488.0	11.9	11.9	11.9	

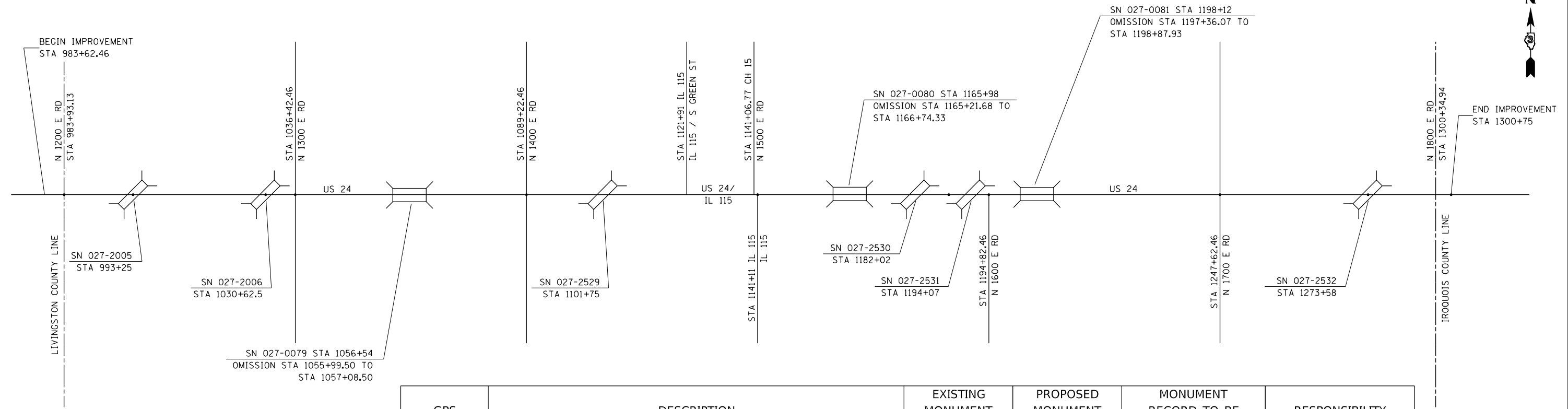
NOTE: HMA SURFACE REMOVAL VARIABLE DEPTH VARIES FROM 1-3/4" AT US 24 TO 1-1/2" AT THE BUTT JOINT OF THE SIDEROAD OR ENTRANCE

PAVEMENT MARKING SCHEDULE									
LOCATION	PAINT PAVEMENT MARKING		PAINT PVMT MARK	THERMO PVMT MARK	THERMO PVMT MARK	THERMO PVMT MARK	RAISED REFL PVMT MARK	RAISED REFL PVMT MARK	
	WHITE 4"	YELLOW 4"	YELLOW 6"	WHITE 8"	WHITE 12"	WHITE 24"		REM	
	FOOT	FOOT	FOOT	FOOT	FOOT	FOOT	EACH	EACH	
U.S. 24									
STA.	TO	STA.							
983+62.46		1055+99.50	28,948		3,619		90	90	
BRIDGE OMISSION - SN 027-0079									
1055+99.50	TO	1057+08.50	436		55				
1057+08.50	TO	1165+21.68	43,253	3,660	5,407		135	135	
BRIDGE OMISSION - SN 027-2080									
1165+21.68	TO	1166+74.33	611		76				
1166+74.33	TO	1197+36.07	12,247		1,531		38	38	
BRIDGE OMISSION - SN 027-2081									
1197+36.07	TO	1198+87.93	607		76				
1198+87.93	TO	1300+75.00	40,748		5,094		127	127	
IL 115 NORTH LEG									
			600		80	129	52	36	
IL 115 SOUTH LEG									
			600		80	125	50	36	
COUNTY HIGHWAY 16									
			360						
SUBTOTAL			128,410	3,660	16,018	254	102	72	394
TOTAL			132,070		16,018	254	102	72	394

- NOTES:
- APPROXIMATE STATIONS FOR NO PASSING ZONES ARE STA. 1100+40 TO STA. 1106+75 EASTBOUND AND STA. 1112+40 TO STA. 1124+35 WESTBOUND. THESE STATIONS SHOULD BE VERIFIED IN THE FIELD BY THE ENGINEER.
 - QUANTITIES INCLUDED FOR TWO SEPARATE APPLICATIONS OF PAINT PAVEMENT MARKING LINES

TEMPORARY PAVEMENT MARKING SCHEDULE									
LOCATION	TEMPORARY PAVEMENT MARKING		TEMP PVMT MARK	TEMP PVMT MARK	TEMP PVMT MARK	TEMP PVMT MARK	PVMT MARK REM	SHORT-TERM PVMT MARK	SHORT-TERM PVMT MARK
	WHITE 4"	YELLOW 4"	YELLOW 6"	WHITE 8"	WHITE 12"	WHITE 24"	WATER BLASTING	REM	MARK
	FOOT	FOOT	FOOT	FOOT	FOOT	FOOT	SQ FT	SQ FT	FOOT
U.S. 24									
STA.	TO	STA.							
983+62.46		1055+99.50	14,474		1,809		5,729	241	1,447
BRIDGE OMISSION - SN 027-0079									
1055+99.50	TO	1057+08.50	218		27		86	4	22
1057+08.50	TO	1165+21.68	21,626	1,830	2,703		9,170	361	2,163
BRIDGE OMISSION - SN 027-2080									
1165+21.68	TO	1166+74.33	305		38		121	5	31
1166+74.33	TO	1197+36.07	6,123		765		2,424	102	612
BRIDGE OMISSION - SN 027-2081									
1197+36.07	TO	1198+87.93	304		38		120	5	30
1198+87.93	TO	1300+75.00	20,374		2,547		8,065	340	2,037
IL 115 NORTH LEG									
			300		17	129	52	36	17
IL 115 SOUTH LEG									
			300		17	125	50	36	17
COUNTY HIGHWAY 15									
			180						
SUBTOTAL			64,205	1,830	7,961	254	102	72	26,348
TOTAL			66,035		7,961	254	102	72	26,348

NOTE: APPROXIMATE STATIONS FOR NO PASSING ZONES ARE STA. 1100+40 TO STA. 1106+75 EASTBOUND AND STA. 1112+40 TO STA. 1124+35 WESTBOUND. THESE STATIONS SHOULD BE VERIFIED IN THE FIELD BY THE ENGINEER.



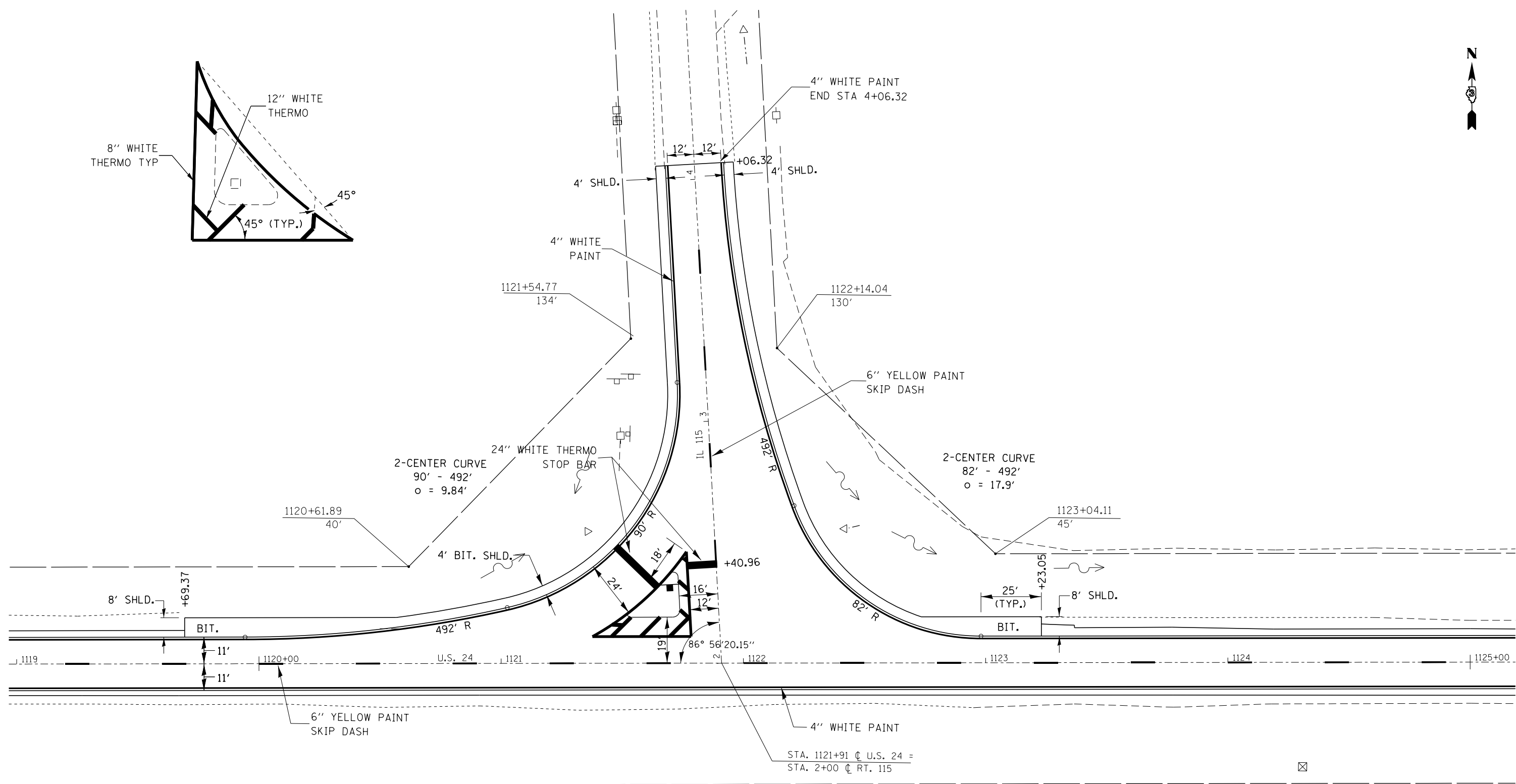
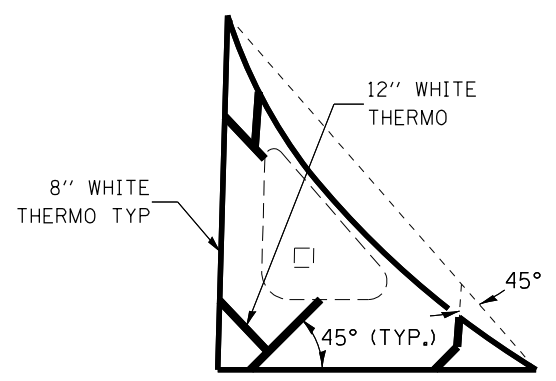
GPS NUMBER	DESCRIPTION	EXISTING MONUMENT TYPE	PROPOSED MONUMENT TYPE	MONUMENT RECORD TO BE RECORDED*	RESPONSIBILITY
024700	NE CORNER SECTION 12, T26N, R8E, 3RD PM	-	TYPE 1	YES	1
024701	NW CORNER SECTION 7, T26N, R9E, 3RD PM	BRASS DISK	TYPE 1	YES	1
024702	N QTR CORNER SECTION 7, T26N, R9E, 3RD PM	BRASS DISK	TYPE 1	YES	1
024703	NW CORNER SECTION 8, T26N, R9E, 3RD PM	BRASS DISK	TYPE 1	YES	1
024705	N QTR CORNER SECTION 8, T26N, R9E, 3RD PM	BRASS DISK	TYPE 1	YES	1
024706	NW CORNER SECTION 9, T26N, R9E, 3RD PM	BRASS DISK	TYPE 1	YES	1
024707	N QTR CORNER SECTION 9, T26N, R9E, 3RD PM	BRASS DISK	TYPE 1	YES	1
024708	NW CORNER SECTION 10, T26N, R9E, 3RD PM	BRASS DISK	TYPE 1	YES	1
024709	N QTR CORNER SECTION 10, T26N, R9E, 3RD PM ALTERNATE OPINION	MAG NAIL	MAG NAIL	YES WITH 024709A	2
024709A	N QTR CORNER SECTION 10, T26N, R9E, 3RD PM	-	TYPE 1	YES	1
024710	NW CORNER SECTION 11, T26N, R9E, 3RD PM	BRASS DISK	TYPE 1	YES	1
024711	N QTR COR SECTION 11, T26N, R9E, 3RD PM	BRASS DISK	TYPE 1	YES	1
024712	NW CORNER SECTION 12, T26N, R9E, 3RD PM	-	TYPE 1	YES	1
024713	N QTR CORNER SECTION 12, T26N, R9E, 3RD PM	-	TYPE 1	YES	1
024714	NE CORNER SECTION 12, T26N, R9E, 3RD PM	-	TYPE 1	YES	1
024715	NW CORNER SECTION 7, T26N, R10E, 3RD PM	-	TYPE 1	YES	1

COORDINATES OF THE LISTED MONUMENTS ARE KNOWN. PRE CONSTRUCTION TIES BY THE R.E. ARE NOT REQUIRED. UNKNOWN MONUMENTS SET BY OTHERS MAY EXIST. IF FOUND, THE R.E. MUST TIE AND REQUEST PLATS AND PLANS PERSONNEL TO GPS ANY MONUMENT(S) SUBJECT TO DAMAGE OR DESTRUCTION FROM THE RESURFACING WORK, AND INFORM THEM TO RESET THE MONUMENT(S) WHEN RESURFACING IS COMPLETE. THE R.E. IS TO INFORM THE PLATS AND PLANS SECTION TO SEARCH FOR ADDITIONAL MONUMENTS IF THE JOB LIMITS ARE EXPANDED DURING CONSTRUCTION. UPON PAVING COMPLETION, THE R.E. WILL DIRECT PLATS AND PLANS PERSONNEL TO STAKE THE LOCATIONS FOR TYPE 1 MONUMENT CORING. * PLATS AND PLANS WILL PREPARE AND RECORD THE REQUIRED MONUMENT RECORDS.

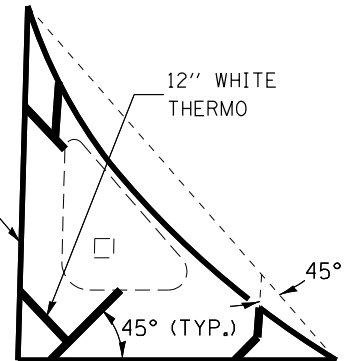
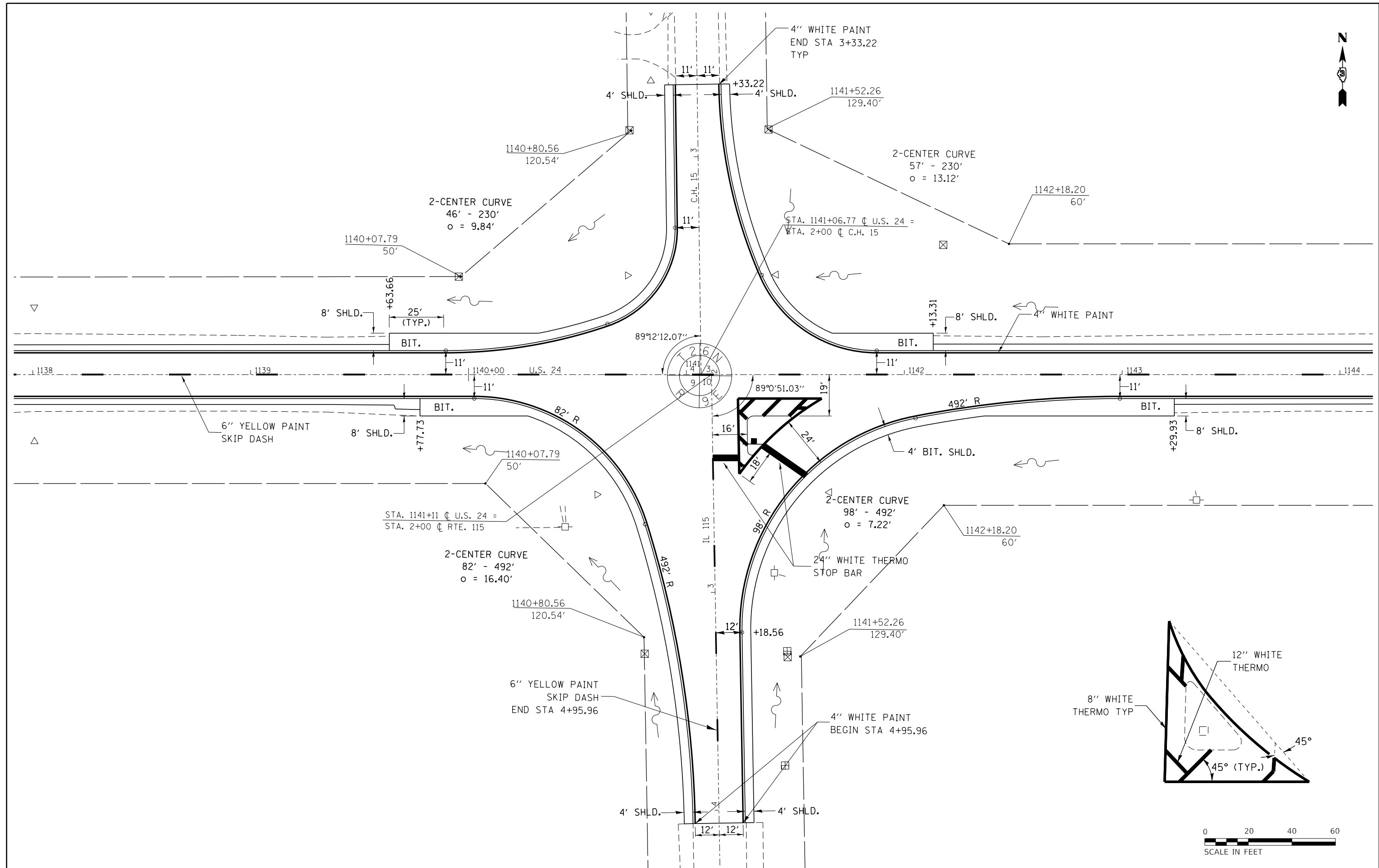
RESPONSIBILITY:
 1: RESIDENT TO RE-ESTABLISH MONUMENT (PAY ITEM REQUIRED. PERMANENT SURVEY MARKER, TYPE 1)
 2: PLATS AND PLANS TO RE-ESTABLISH MONUMENT

MODEL: Default
 FILE: \\nrcs-pub\planroom\dat\links\gov\PI\DOT\Documents\DOT_Offices\District_3\Projects\0366A81\CADD\0366A81-1-1-1-1-1-1-1.dgn

USER NAME = corcoranlm	DESIGNED -	REVISED -	STATE OF ILLINOIS DEPARTMENT OF TRANSPORTATION	LAYOUT MAP			F.A.P. RTE.	SECTION	COUNTY	TOTAL SHEETS	SHEET NO.
DRAWN -	REVISED -	317					(23)RS-4,(24RB)RS-1	FORD	13	9	
PLOT SCALE = 100,0000' / in.	CHECKED -	REVISED -		SCALE: SHEET OF SHEETS STA. TO STA.			CONTRACT NO. 66A81				
PLOT DATE = 5/23/2019	DATE -	REVISED -		ILLINOIS FED. AID PROJECT							



FILE NAME =	USER NAME = corcoranim	DESIGNED -	REVISED -	STATE OF ILLINOIS DEPARTMENT OF TRANSPORTATION	PAVEMENT MARKING				F.A.P. RTE.	SECTION	COUNTY	TOTAL SHEETS	SHEET NO.	
pw:\planroom.dot.illinois.gov\PWIDOT\Documents\IDOT Offices\District 3\Projects\0366A81\Drawings\0366A81-sht-pvmtmk.dgn		CHECKED -	REVISED -		SCALE:	SHEET NO.	OF SHEETS	STA.	TO STA.	317	(23)RS-4,(24)RS-1	FORD	13	10
		DATE -	REVISED -		CONTRACT NO. 66A81									
					ILLINOIS FED. AID PROJECT									



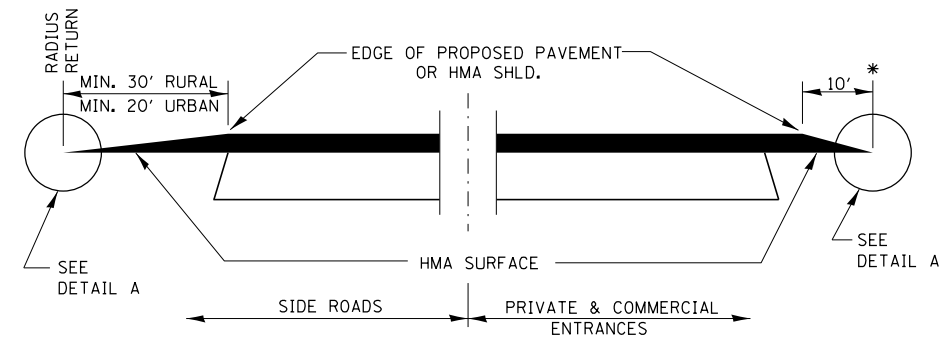
FILE NAME =	USER NAME = corcoranm	DESIGNED -	REVISED -
p:\planroom\dot.illinois.gov\PIWIDOT\Documents\IDOT Offices\District 3\Projects\0366A\BID\Drawings\0366A81-sht-pvmtmk.dgn		REVISED -	REVISED -
	PLOT SCALE = 40.0000' / in.	CHECKED -	REVISED -
	PLOT DATE = 5/23/2019	DATE -	REVISED -

**STATE OF ILLINOIS
DEPARTMENT OF TRANSPORTATION**

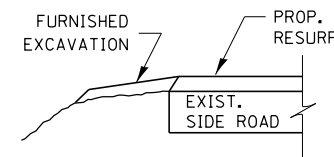
PAVEMENT MARKING

SCALE: SHEET OF SHEETS STA. TO STA.

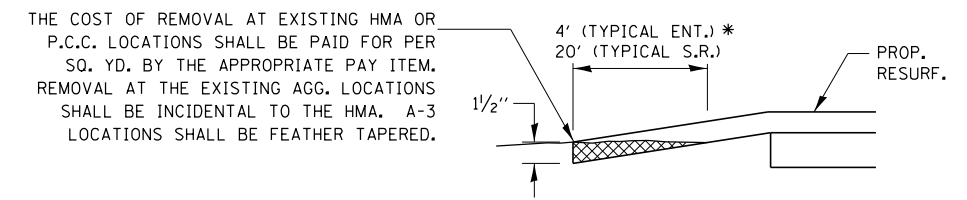
F.A.P. RTE.	SECTION	COUNTY	TOTAL SHEETS	SHEET NO.
317	(23)RS-4,(24)BRS-1	FORD	13	11
CONTRACT NO. 66A81				
ILLINOIS FED. AID PROJECT				



SECTION A-A
DETAILS AT ENTRANCES & SIDE ROADS

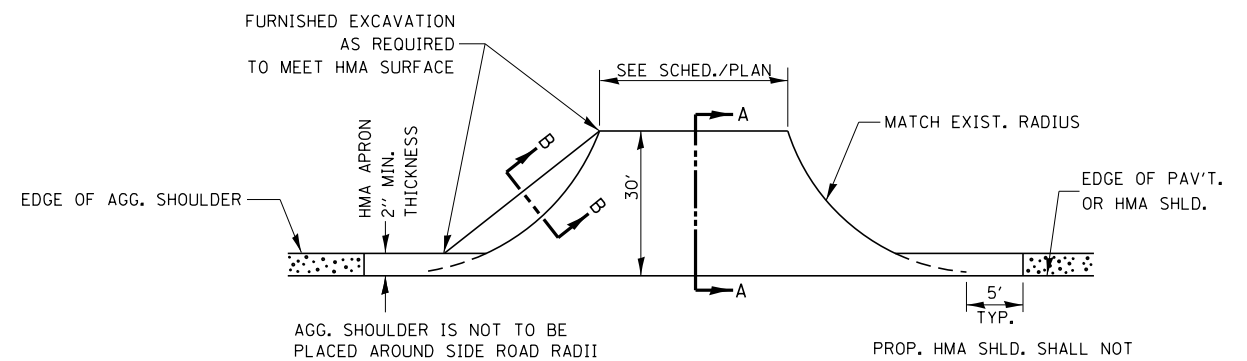


SECTION B-B

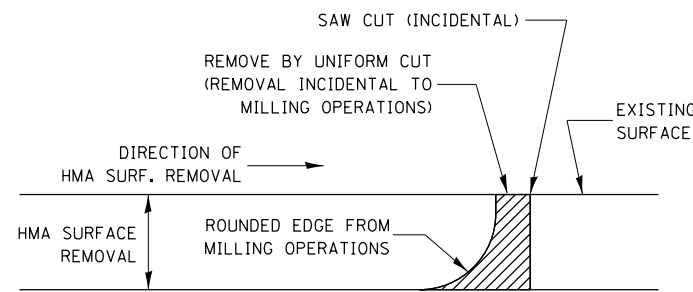


DETAIL A

THE COST OF REMOVAL AT EXISTING HMA OR P.C.C. LOCATIONS SHALL BE PAID FOR PER SQ. YD. BY THE APPROPRIATE PAY ITEM. REMOVAL AT THE EXISTING AGG. LOCATIONS SHALL BE INCIDENTAL TO THE HMA. A-3 LOCATIONS SHALL BE FEATHER TAPERED.

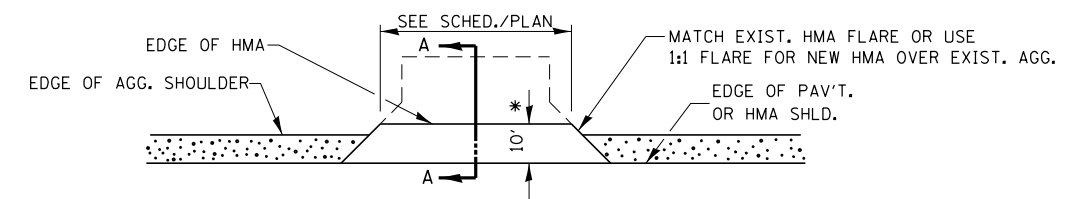


PLAN AT SIDE ROADS



NOTE:
WHEN MILLING OPERATIONS PRODUCE A ROUNDED EDGE, THEN A SAW CUT SHALL BE USED TO MANUFACTURE A PERPENDICULAR EDGE AS SHOWN IN THE DETAIL. THE ENGINEER SHALL BE THE SOLE JUDGE CONCERNING THE USE OF THIS DETAIL

HMA DETAIL AT BUTT JOINTS



PLAN AT PRIVATE & COMMERCIAL ENTRANCES

(DO NOT RESURFACE FIELD ENTRANCES)

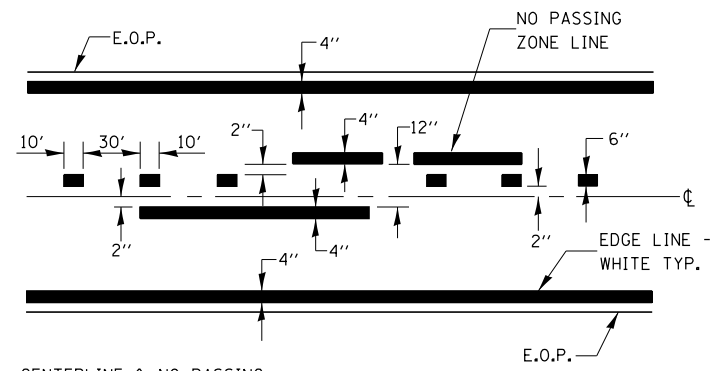
* PROPOSED HMA RESURFACING AT PUBLIC EDUCATIONAL FACILITY ENTRANCES SHALL BE EXTENDED TO THE RIGHT-OF-WAY LIMITS.

FILE NAME =	USER NAME = corcoranlm	DESIGNED -	REVISED -
p:\planroom.dot.illinois.gov\PIDOT\Documents\IDOT Offices\District 3\Projects\0366A81\Drawings\0366A81-sht-details.DGN		CHECKED -	REVISED -
		DATE -	REVISED -

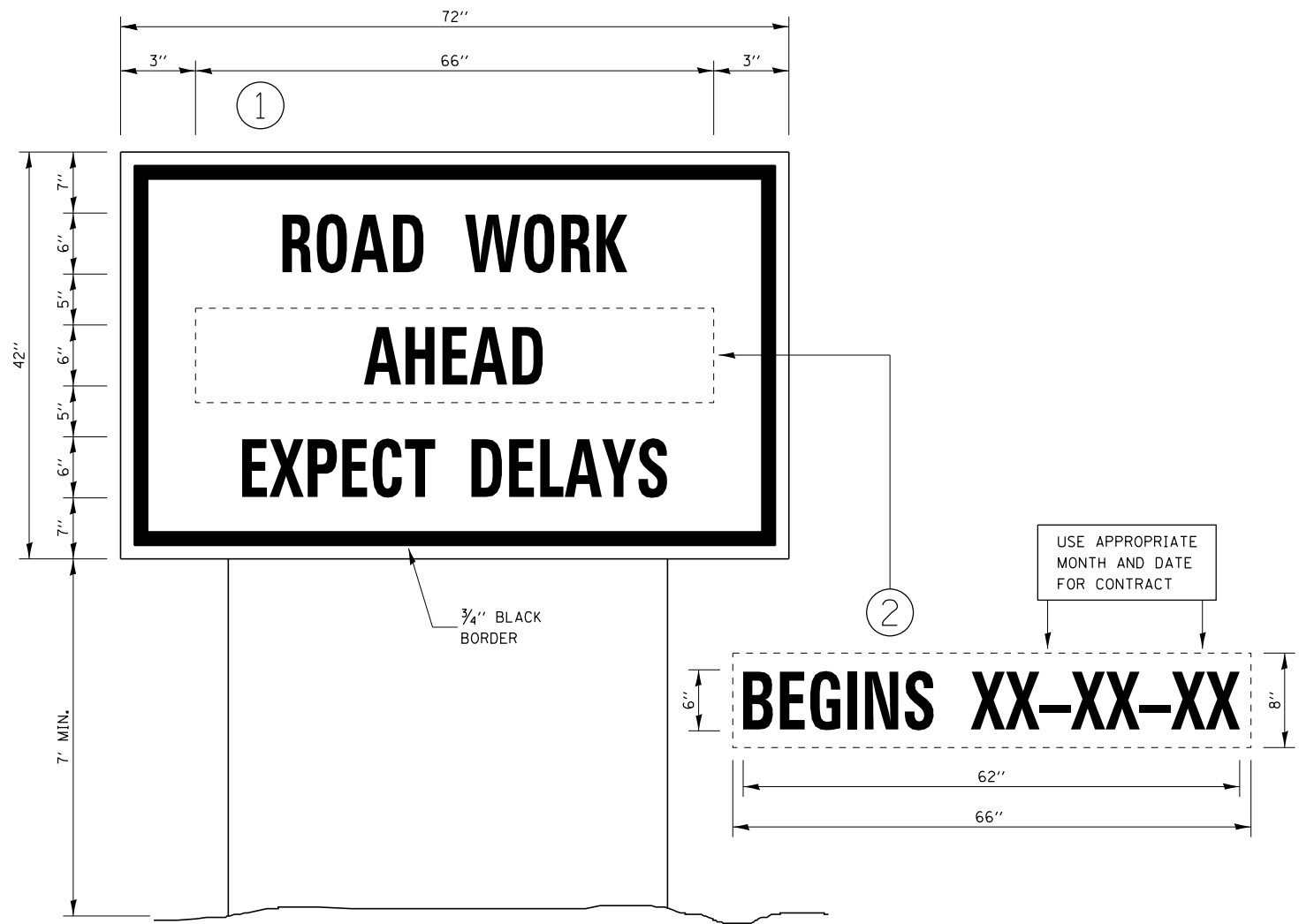
STATE OF ILLINOIS
DEPARTMENT OF TRANSPORTATION

DETAILS			
SCALE:	SHEET NO.	OF SHEETS	STA. TO STA.

F.A.P. RTE.	SECTION	COUNTY	TOTAL SHEETS	SHEET NO.
317	(23)RS-4,(24)RS-1	FORD	13	12
CONTRACT NO. 66A81				
ILLINOIS FED. AID PROJECT				



CENTERLINE & NO PASSING ZONE LINES - YELLOW (SEE TYPICAL SECTIONS)
PAVEMENT MARKING



TEMPORARY INFORMATION SIGNING

NOTES:

1. USE 6" D BLACK LETTERING ON FLOURESENT ORANGE BACKGROUND.
2. ERECT SIGNS AT LOCATIONS IN ADVANCE OF THE "ROAD CONSTRUCTION AHEAD" SIGNS AS DIRECTED BY THE ENGINEER.
3. ERECT SIGN ① WITH INSTALLED PANEL ② A MINIMUM OF ONE WEEK PRIOR TO THE START OF THE LANE CLOSURE.
4. REMOVE PANEL ② ON THAT DATE.
5. SEE SPECIAL PROVISION "TEMPORARY INFORMATION SIGNING" FOR ADDITIONAL INFORMATION.
6. WILL BE PAID FOR PER SQ FT AS "TEMPORARY INFORMATION SIGNING". EACH SIGN = 21 SQ FT AND THE DATE PANEL ② WILL NOT BE MEASURED SEPARATELY FOR PAYMENT.

FILE NAME =	USER NAME = corcoranlm	DESIGNED -	REVISED -	STATE OF ILLINOIS DEPARTMENT OF TRANSPORTATION	DETAILS			F.A.P. RTE.	SECTION	COUNTY	TOTAL SHEETS	SHEET NO.	
p:\planroom.dot.illinois.gov\PIDOT\Documents\IDOT Offices\District 3\Projects\0366A81\Drawings\0366A81-sht-details.DGN		CHECKED -	REVISED -		SCALE:	SHEET NO.	OF SHEETS	STA.	TO STA.	317	(23)RS-4,(24)RS-1	FORD	13 13
		PLOT SCALE = 100.0000' / in.	REVISED -		CONTRACT NO. 66A81								
		PLOT DATE = 5/23/2019	REVISED -		ILLINOIS FED. AID PROJECT								