

070

07-12-2019 LETTING ITEM 070

STATE OF ILLINOIS
DEPARTMENT OF TRANSPORTATION

F.A.I. RTE	SECTION	COUNTY	TOTAL SHEETS	SHEET NO.
64	(97-1,97-1)RS-2	WHITE	29	1
		ILLINOIS	CONTRACT NO. 78740	

FOR INDEX OF SHEETS, SEE SHEET NO. 3
FOR SUMMARY OF QUANTITIES, SEE SHEET NO. 5-8

PROPOSED HIGHWAY PLANS

F.A.I. 64 ROUTE (I-64)
SECTION (97-1,97-1-1)RS-2
PROJECT NHPP-KNL4(563)
SMART & RESURFACING
WHITE COUNTY

TRAFFIC DATA

ADT = 4,690 (2019), 5,730 (2039)
7% TRUCKS

PROP. PROJECT BEGINS
EBL STA. 4632 + 36
WBL STA. 4638 + 78

TOWNSHIPS:
BURNT PRAIRIE
GRAY

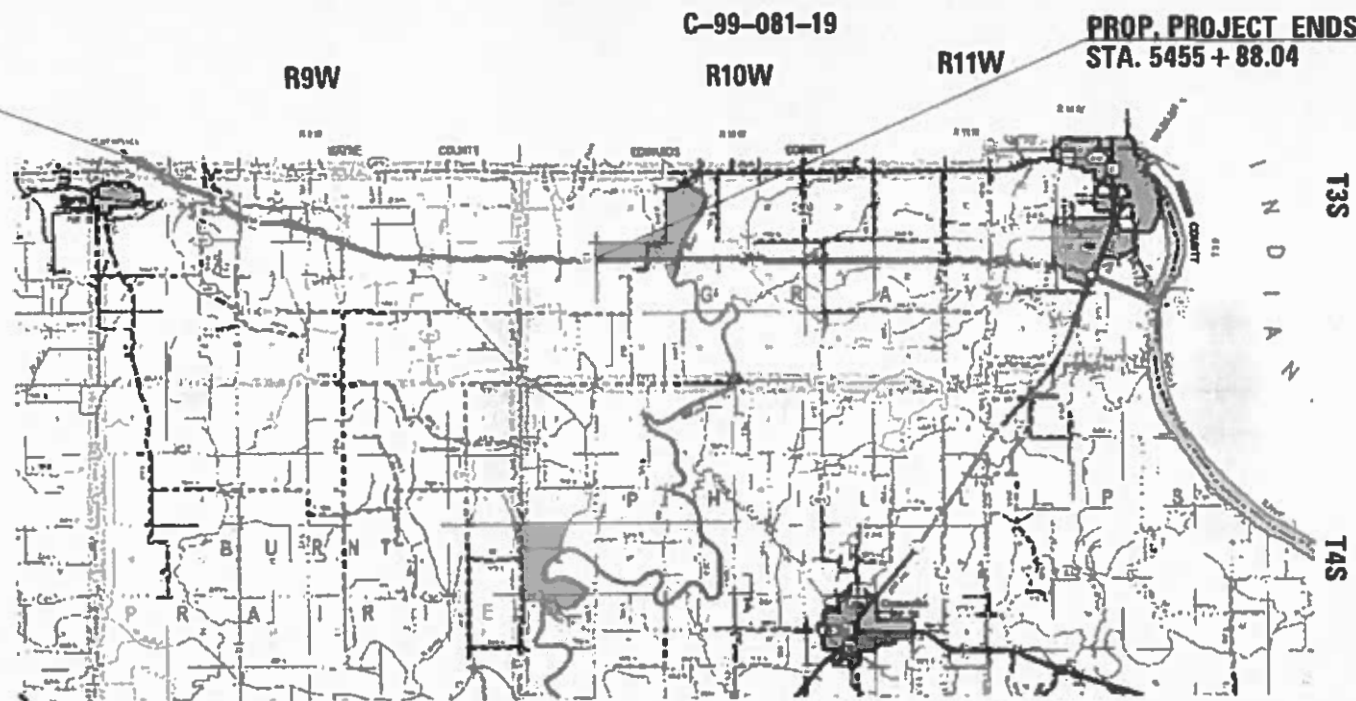
DESIGN DESIGNATION : NA

COORDINATE SYSTEM : ILLINOIS EAST
POSTED SPEED : 70 MPH

J.U.L.I.E.
JOINT UTILITY LOCATION INFORMATION FOR EXCAVATION
1-800-892-0123
OR 811

PROJECT ENGINEER: VALERIE ROLLA
PROJECT DESIGNER ROBERT HANDY

CONTRACT NO. 78740



STATE OF ILLINOIS
DEPARTMENT OF TRANSPORTATION

SUBMITTED June 3 20 19
Kuth Roberts
REGION FIVE ENGINEER

June 14 20 19
EA ETC
ENGINEER OF DESIGN AND ENVIRONMENT

June 14 20 19
Paul P. [Signature]
DIRECTOR OF HIGHWAYS PROJECT IMPLEMENTATION

PRINTED BY THE AUTHORITY
OF THE STATE OF ILLINOIS

GROSS LENGTH = 34,645.20 FT. = 6.56 MILES
NET LENGTH = 34,363.32 FT. = 6.51 MILES

MODEL: Default
FILE NAME: p:\work\lanroom.dgs\illinois.gov\IMDDT\Documents\DOT_Offices\Districts\9\Project\13740\CAAD\CAADSheets\10978740-Sheets.dgn

Prepared By: Charles Stein
DISTRICT STUDIES & PLANS ENGINEER

Examined By: _____
DISTRICT LAND ACQUISITION ENGINEER

Examined By: Carrie M.
DISTRICT PROGRAM DEVELOPMENT ENGINEER

Examined By: Karl M. J.
DISTRICT OPERATIONS ENGINEER

Examined By: Keith Robertson
DISTRICT PROJECT IMPLEMENTATION ENGINEER

Examined By: Douglas J. Zellmer
DISTRICT CONSTRUCTION ENGINEER

Examined By: [Signature]
DISTRICT MATERIALS ENGINEER

USER NAME = handycr	DESIGNED -	REVISED -
PLOT SCALE = 100,0000' / in.	DRAWN -	REVISED -
PLOT DATE = 5/31/2019	CHECKED -	REVISED -
	DATE -	REVISED -

**STATE OF ILLINOIS
DEPARTMENT OF TRANSPORTATION**

SIGNATURE SHEET

SCALE: SHEET OF SHEETS STA. TO STA.

F.A.I. RTE.	SECTION	COUNTY	TOTAL SHEETS	SHEET NO.
64	(97-1,97-1-1)R5-2	WHITE	29	2
CONTRACT NO. 78740				
ILLINOIS FED. AID PROJECT				

INDEX OF SHEETS

SHEET NO	DESCRIPTION
1	COVER SHEET
2	SIGNATURE SHEET
3	INDEX OF SHEETS & MIXTURE REQ STATION EQUATIONS
4	GENERAL NOTES, MTD TABLE AND HIGHWAY STANDARDS
5-7	SUMMARY OF QUANTITIES
8	TYPICAL SECTIONS: I 64
9	TYPICAL SECTION & RAMP DETAILS
10	RESURFACING SCHEDULE
11	SHOULDER PAVING SCHEDULE
12	RAMP PAVEMENT RESURFACING SCHEDULE
13	PAVEMENT MARKING SCHEDULE
14	RPM SCHEDULE
15-27	I-64 PLAN
28	RAMP TYPICAL SECTION & RAMP PLAN
29	ROUGH GROOVED SURFACE, UNEVEN LANES SIGN, INLAY DETAIL

HMA MIXTURE REQUIREMENTS TABLES

The following HMA mixture requirements are applicable for this project

Location(s):	Hot-Mix Asphalt Surface Course
Mixture Use(s):	Polymerized Hot-Mix Asphalt Surface Course, Mix D, N90
PG:	SBS PG76-22
Design Air Voids:	See Special Provision
Mixture Composition: (Mixture Gradation)	4.0 %, 90 Gyration Design IL-9.5mm
Friction Aggregate:	D Surface
Mixture Weight:	112 lbs/Sq Yd/in
Quality Management Program:	PFP
Sublot Size:	TBD

Location(s):	Hot-Mix Asphalt Shoulders
Mixture Use(s):	Hot-Mix Asphalt Surface Course, N30, IL-9.5L
PG:	PG64-22
Design Air Voids:	See Special Provision
Mixture Composition: (Mixture Gradation)	4.0 %, 30 Gyration Design IL-9.5L
Friction Aggregate:	None
Mixture Weight:	112 lbs/Sq Yd/in
Quality Management Program:	QCQA
Sublot Size:	NA

STATION EQUATIONS

STA. 4659+82.75 BK (EBL) = STA. 4660+00.00 AH
 STA. 4660+68.34 BK (WBL) = STA. 4660+00.00 AH
 STA. 4760+43.05 BK TO STA. 5327+32.64 AH

MODEL: Default
 FILE: hma15c_pavplannerom.dwg
 PROJECT: 78740-CAAD-Data-CAD-Drawings-0978740-Sheets.dgn
 USER: handycr
 PLOT SCALE = 100.0000' / in.
 PLOT DATE = 6/2/2019

USER NAME = handycr	DESIGNED -	REVISED -	STATE OF ILLINOIS DEPARTMENT OF TRANSPORTATION	INDEX OF SHEETS, MIXTURE DESIGN STANDARDS, STATION EQUATIONS	F.A.I. RTE.	SECTION	COUNTY	TOTAL SHEETS	SHEET NO.
DRAWN -	REVISED -	64			(97-1.97-1-1)RS-2	WHITE	29	3	
CHECKED -	REVISED -	CONTRACT NO. 78740							
DATE -	REVISED -	ILLINOIS FED. AID PROJECT							
PLOT DATE = 6/2/2019	DATE -	REVISED -	SCALE:	SHEET OF SHEETS	STA.	TO STA.			

GENERAL NOTES

FACTORS USED FOR ESTIMATING PLAN QUANTITIES ARE AS FOLLOWS AND SHALL NOT BE USED FOR THE BASIS OF FINAL QUANTITIES:

ALL HOT MIX ASPHALT 2.016 TONS/CU. YD.

ALL AGGREGATE 2.05 TONS/CU. YD.

THE QUANTITY OF SHORT TERM PAVEMENT MARKING SHOWN IN THE PLANS IS BASED ON ONE APPLICATION EACH FOR THE HMA SURFACE REMOVAL, BINDER COURSE, AND SURFACE COURSE

ATTAINMENT OF PROPER CROWN OR SUPERELEVATION SHALL BE FULLY ACCOMPLISHED WITH THE HOT MIX ASPHALT SURFACE REMOVAL OR HOT MIX ASPHALT BINDER COURSE OR LEVELING BINDER, WHEN SPECIFIED.

AT ALL LOCATIONS WHERE THE PROPOSED HOT MIX ASPHALT OR CONCRETE PAVEMENT JOINS AN EXISTING HOT MIX ASPHALT OR CONCRETE PAVEMENT, A FULL DEPTH SAWED JOINT SHALL BE CONSTRUCTED. THE COST OF THIS JOINT WILL BE INCLUDED IN THE COST OF THE TYPE OF PAVEMENT BEING CONSTRUCTED.

THE CONTRACTOR SHALL STAMP STATIONING IN THE HOT MIX ASPHALT SURFACE AT 300 FT INTERVALS ON THE INSIDE EDGE OF THE OUTSIDE SHOULDER AND AS DIRECTED BY THE ENGINEER. THE STATION SYMBOL STAMPS USED SHALL BE FURNISHED BY THE CONTRACTOR. THEY SHALL BE 5 1/2 IN. TALL OF A DESIGN APPROVED BY THE ENGINEER, AND SHALL REMAIN THE PROPERTY OF THE CONTRACTOR.

EXISTING PIPE UNDERDRAIN OUTLETS IN THE FORESLOPES OR MEDIAN SLOPES SHALL BE PRESERVED AND PROTECTED DURING CONSTRUCTION. ANY DAMAGE TO AN UNDERDRAIN OUTLET RESULTING FROM CONSTRUCTION ACTIVITY SHALL BE REPAIRED AT THE CONTRACTOR'S EXPENSE.

PRIOR TO PLACEMENT OF THE FINAL PAVEMENT MARKINGS THE RESIDENT ENGINEER SHALL CONTACT THE BUREAU OF OPERATIONS AND ARRANGE FOR INSPECTION AND APPROVAL OF THE PAVEMENT MARKING LAYOUT.

AFTER A LIFT OF HOT MIX ASPHALT HAS BEEN PLACED, THE LANE SHALL REMAIN CLOSED TO TRAFFIC UNTIL THE NEW MAT HAS COOLED TO 150 DEGREES FAHRENHEIT

THE CONTRACTOR SHALL COMPLETE ALL PATCHING PRIOR TO THE HOT MIX ASPHALT SURFACE REMOVAL.

COMMITMENTS: NONE

MTD CROSSING RESTRICTIONS TABLE

SN & CENTERLINE STATION ROUTE (FAP 42)	EXISTING FILL HEIGHT OVER BOX CULVERT	THICKNESS OF EXISTING PAVEMENT OVER BOX CULVERT	MTD CROSSING RESTRICTIONS
	FOOT	FOOT	
CULVERTS			
SN 097-2004 (STA. 4645+00.00) WBL	5.10	0.42	PENDING
SN 097-7000 (STA. 4663+16.70) WBL		0.42	PENDING
SN 097-7001 (STA. 4661+84) EBL	3.00	0.42	NONE
SN 097-7002 (STA. 4733+32)	5.00	0.42	NONE
SN 097-7003 (STA. 4754+51.89)	3.50	0.42	NONE
SN 097-7004 (STA. 5237+32.64)	2.50	0.42	NONE
SN 097-7005 (STA. 5378+87.65)	6.50	0.42	NONE

BRIDGES			
SN 097-0040 (STA. 4651+45) EBL			EMPTIED
SN 097-0042 (STA. 4746+52.36) WBL			EMPTIED
SN 097-0043 (STA. 4746+67.05) EBL			EMPTIED
SN 097-0046 (STA. 5324+65.76) WBL			EMPTIED
SN 097-0047 (STA. 5328+12.37) EBL			EMPTIED

STANDARDS

000001-07	701401-12
001006	701411-09
442001-04	701426-09
642001-02	701456-05
701101-05	701901-08
701106-02	780001-05
701400-09	781001-04

STATE OF ILLINOIS
DEPARTMENT OF TRANSPORTATION

GENERAL NOTES & MTD

SCALE: SHEET OF SHEETS STA. TO STA.

F.A.I. RTE.	SECTION	COUNTY	TOTAL SHEETS	SHEET NO.
64	(97-1.97-1-1)RS-2	WHITE	29	4
CONTRACT NO. 78740				
ILLINOIS FED. AID PROJECT				

SUMMARY OF QUANTITIES

COUNTY:	WHITE CO
ROUTE:	I 64
FUNDING:	90% FED / 10% STATE
LOCATION:	RURAL
	ROADWAY
	0005

CODE NUMBER	ITEM DESCRIPTION	UNIT	QUANTITY
40600290	BITUMINOUS MATERIALS (TACK COAT)	POUND	142,229
40600990	TEMPORARY RAMP	SQ YD	334
40603545	POLYMERIZED HOT-MIX ASPHALT SURFACE COURSE, MIX "D", N90	TON	15,800
44000155	HOT-MIX ASPHALT SURFACE REMOVAL, 1 1/2"	SQ YD	316,044
44200633	CLASS A PATCHES, TYPE I, 17 INCH	SQ YD	4
44200637	CLASS A PATCHES, TYPE II, 17 INCH	SQ YD	110
44200641	CLASS A PATCHES, TYPE III, 17 INCH	SQ YD	17
44200643	CLASS A PATCHES, TYPE IV, 17 INCH	SQ YD	82
44201299	DOWEL BARS 1 1/2"	EACH	312
44213000	PATCHING REINFORCEMENT	SQ YD	212
44213200	SAW CUTS	FOOT	1,224
44213204	TIE BARS 3/4"	EACH	430

MODEL: Default
 FILE: \\nas101.psw.ibm.com\data\illinois.gov\PI\DOT\Documents\DOT_Offices\District 9\Projects\78740\CADD\Drawings\9778740-Sheets.dgn

USER NAME = handycr PLOT SCALE = 100.0000' / in. PLOT DATE = 6/2/2019	DESIGNED - DRAWN - CHECKED - DATE -	REVISED - REVISED - REVISED - REVISED -	STATE OF ILLINOIS DEPARTMENT OF TRANSPORTATION	SUMMARY OF QUANTITIES	F.A.I. RTE. 64	SECTION (97-1.97-1-1)RS-2	COUNTY WHITE	TOTAL SHEETS 29	SHEET NO. 5
SCALE: SHEET OF SHEETS STA. TO STA.					ILLINOIS FED. AID PROJECT CONTRACT NO. 78740				

SUMMARY OF QUANTITIES - CONT

COUNTY:	WHITE CO
ROUTE:	I 64
FUNDING:	90% FED / 10% STATE
LOCATION:	RURAL
	ROADWAY
	0005

CODE NUMBER	ITEM DESCRIPTION	UNIT	
48203100	HOT-MIX ASPHALT SHOULDERS	TON	10,863
64200116	SHOULDER RUMBLE STRIPS, 16 INCH	FOOT	136,632
67100100	MOBILIZATION	L SUM	1
70100420	TRAFFIC CONTROL AND PROTECTION, STANDARD 701411	EACH	4
70100800	TRAFFIC CONTROL AND PROTECTION, STANDARD 701401	L SUM	1
70100825	TRAFFIC CONTROL AND PROTECTION, STANDARD 701456	L SUM	1
70300100	SHORT TERM PAVEMENT MARKING	FOOT	25,172
70300150	SHORT TERM PAVEMENT MARKING REMOVAL	SQ FT	8,067
70300210	TEMPORARY PAVEMENT MARKING LETTERS AND SYMBOLS	SQ FT	80
70300220	TEMPORARY PAVEMENT MARKING - LINE 4"	FOOT	152,854
70300250	TEMPORARY PAVEMENT MARKING - LINE 8"	FOOT	1,807
* 78000300	THERMOPLASTIC PAVEMENT MARKING - LINE 5"	FOOT	152,854

* SPECIALTY ITEM

MODEL: Default
 FILE: \\hpc101\pub\hpc\rooms\dat\illinois\pwr\WIDOT\Documents\DOT_Offices\District_9\Projects\78740\CAAD\Drawings\9778740-Sheets.dgn

USER NAME = handycr	DESIGNED -	REVISED -
	DRAWN -	REVISED -
PLOT SCALE = 100.0000 ' / in.	CHECKED -	REVISED -
PLOT DATE = 6/2/2019	DATE -	REVISED -

**STATE OF ILLINOIS
DEPARTMENT OF TRANSPORTATION**

SUMMARY OF QUANTITIES

SCALE: SHEET OF SHEETS STA. TO STA.

F.A.I. RTE.	SECTION	COUNTY	TOTAL SHEETS	SHEET NO.
64	(97-1.97-1-1)RS-2	WHITE	29	6
CONTRACT NO. 78740			ILLINOIS FED. AID PROJECT	

SUMMARY OF QUANTITIES - CONT

COUNTY:	WHITE CO
ROUTE:	I 64
FUNDING:	90% FED / 10% STATE
LOCATION:	RURAL
	ROADWAY
	0005

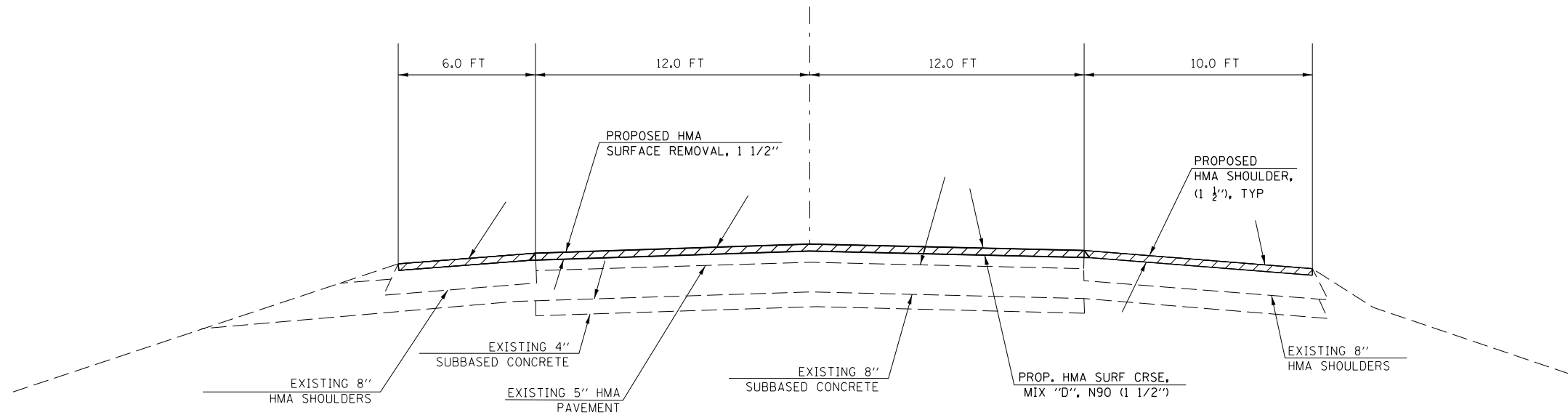
CODE NUMBER	ITEM DESCRIPTION	UNIT	QUANTITY
* 78000500	THERMOPLASTIC PAVEMENT MARKING - LINE 8"	FOOT	1,807
* 78009000	MODIFIED URETHANE PAVEMENT MARKING - LETTERS AND SYMBOLS	SQ FT	632
* 78009005	MODIFIED URETHANE PAVEMENT MARKING - LINE 5"	FOOT	10,310
* 78009024	MODIFIED URETHANE PAVEMENT MARKING - LINE 24"	FOOT	80
* 78100100	RAISED REFLECTIVE PAVEMENT MARKER	EACH	1,273
78300200	RAISED REFLECTIVE PAVEMENT MARKER REMOVAL	EACH	1,273
X0322278	RODENT SHIELDS	EACH	276
X7030005	TEMPORARY PAVEMENT MARKING REMOVAL	SQ FT	52,934
Z0033700	LONGITUDINAL JOINT SEALANT	FOOT	68,316
Z0034105	MATERIAL TRANSFER DEVICE	TON	15,800

* SPECIALTY ITEM

REV. - MS

MODEL: Default
 FILE: M:\MS - Planning\room.dat\illinois.gov\PWIDOT\Documents\DOT_Offices\District_9\Projects\78740\CADData\CAD\Sheets\078740-Sheets.dgn

USER NAME = handyc	DESIGNED -	REVISED -	STATE OF ILLINOIS DEPARTMENT OF TRANSPORTATION	SUMMARY OF QUANTITIES				F.A.I. RTE.	SECTION	COUNTY	TOTAL SHEETS	SHEET NO.
PLOT SCALE = 100.0000' / in.	DRAWN -	REVISED -		64	(97-1,97-1-1)RS-2	WHITE	29	7				
PLOT DATE = 6/2/2019	CHECKED -	REVISED -						CONTRACT NO. 78740				
	DATE -	REVISED -		SCALE:	SHEET	OF	SHEETS	STA.	TO STA.	ILLINOIS FED. AID PROJECT		

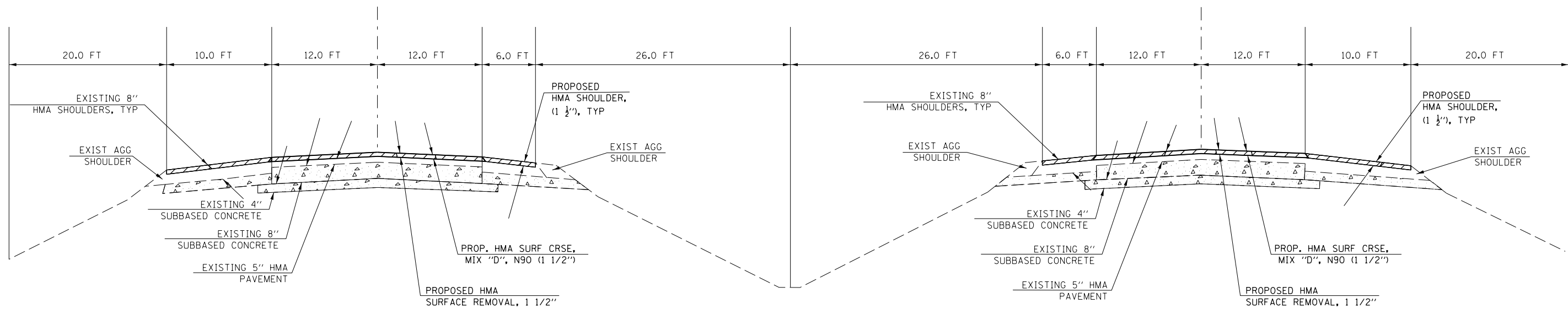


TO BE USED:

WBL
 STA. 4638+78 TO STA. 4660+68.34
 STA EQ 4660+68.34BK = 4660+00.00AH
 STA. 4660+00.00 = STA. 4666+00.00

EBL
 STA. 4632+36 TO STA. 4650+75.52
 STA. 4652+15.12 TO STA. 4659+82.75
 STA EQ 4659+82.75BK = 4660+00.00AH

GAP OMMISIONS
 STA. 4650+75.52 TO STA. 4652+15.12 (EBL)



TO BE USED:

STA. 4666+00.00 TO STA. 4668+81.27
 STA. 4678+75.40 TO STA. 4697+00.00
 STA. 4705+90.75 TO STA 4760+43.05
 STA EQ. 4760+43.05 BK = STA. 5237+32.64 AH
 STA. 5237+32.64 TO STA. 5455+88.04

GAP OMMISIONS

STA. 4746+36.04 TO STA. 4746+68.68 (WBL)
 STA. 4746+52.81 TO STA. 4746+86.66 (EBL)
 STA. 5328+11.16 TO STA. 5329+20.35 (EBL)
 STA. 5327+58.16 TO STA. 5328+66.57 (WBL)

MODEL: Default
 FILE: h:\mhc\p\suplanroom.d\at\links\p\WIDDOT\Documents\DOT_Offices\Default_9\Projects\78740\CADD\Drawings\9778740-Sheets.dgn

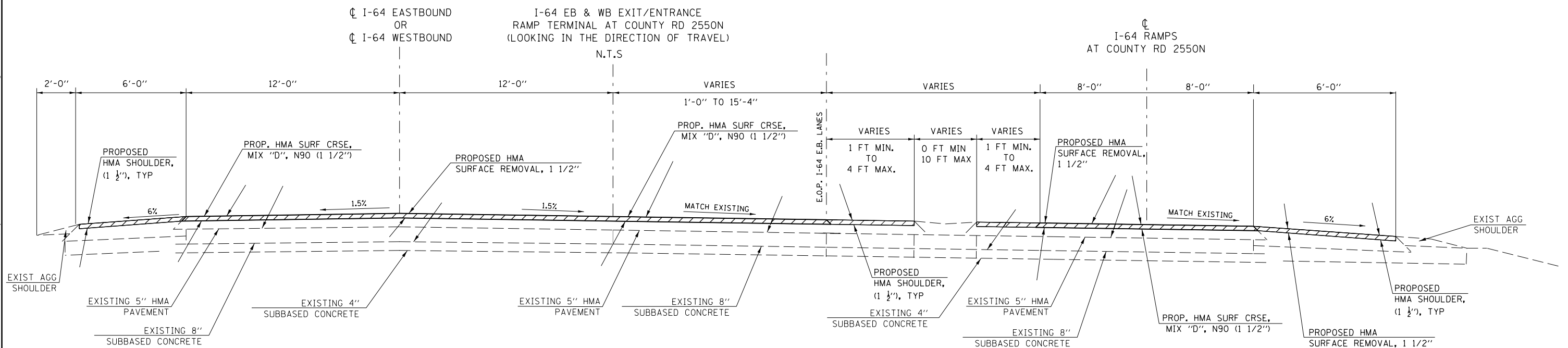
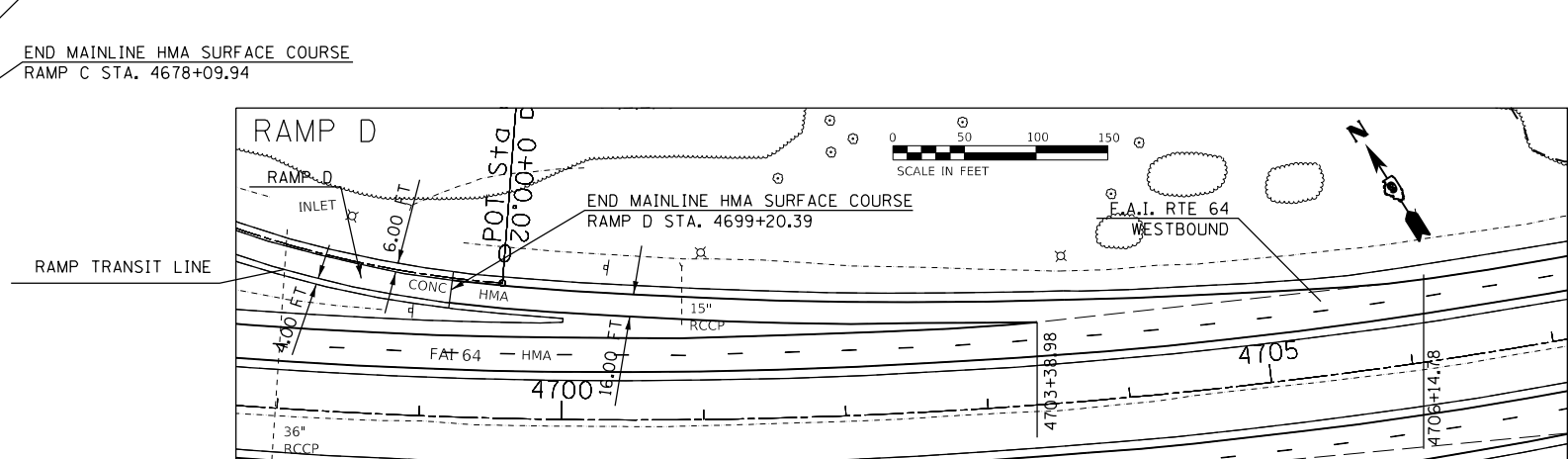
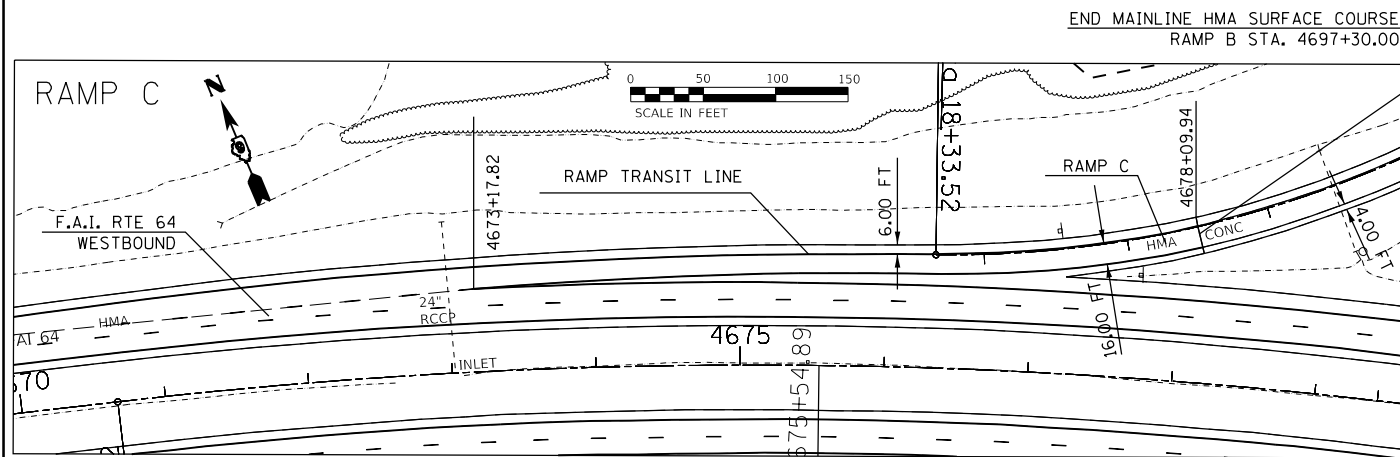
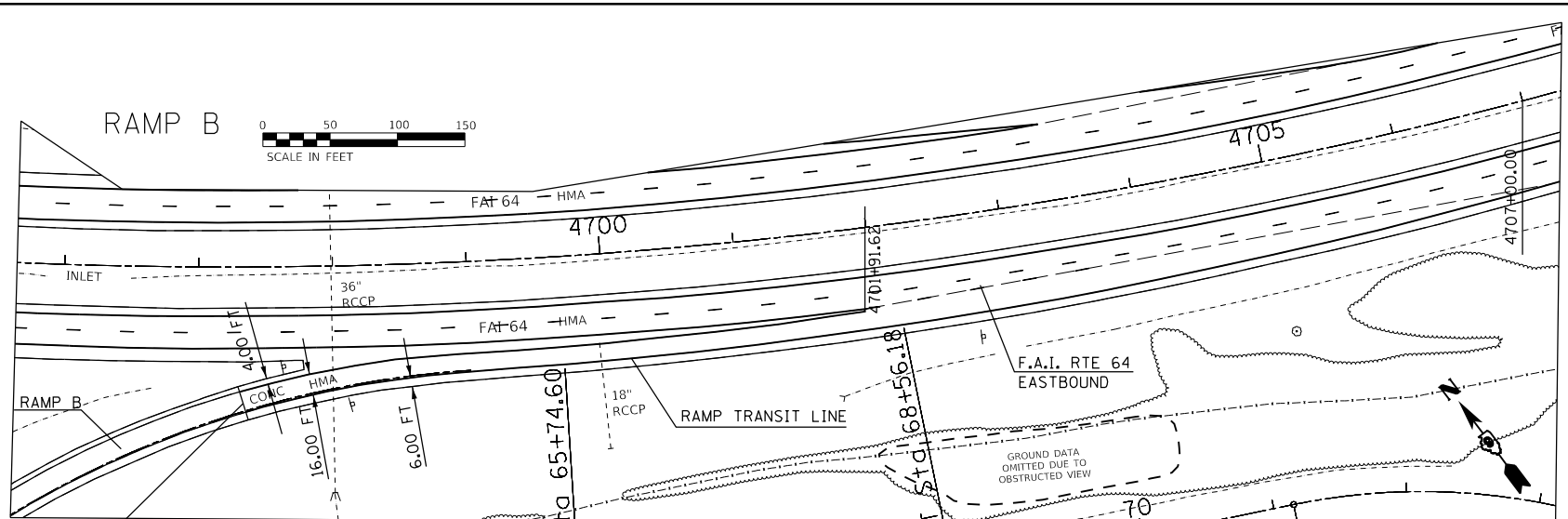
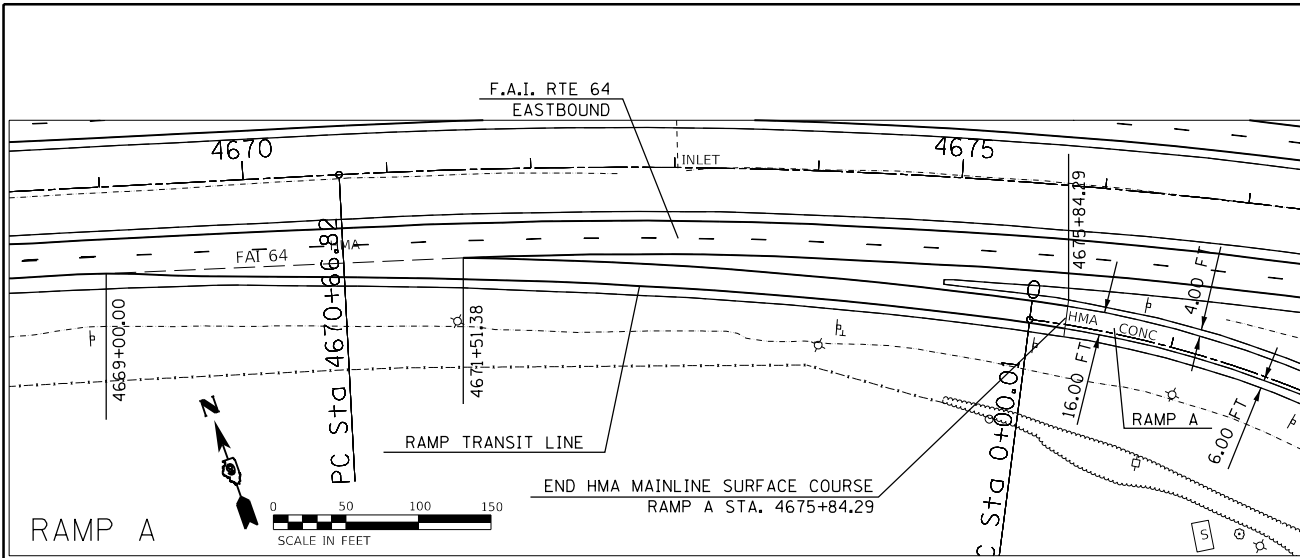
USER NAME = handycr	DESIGNED -	REVISED -
	DRAWN -	REVISED -
PLOT SCALE = 100.0000' / in.	CHECKED -	REVISED -
PLOT DATE = 6/2/2019	DATE -	REVISED -

**STATE OF ILLINOIS
 DEPARTMENT OF TRANSPORTATION**

TYPICAL SECTION

SCALE: SHEET OF SHEETS STA. TO STA.

F.A.I. RTE.	SECTION	COUNTY	TOTAL SHEETS	SHEET NO.
64	(97-1.97-1-1)RS-2	WHITE	29	8
CONTRACT NO. 78740				
ILLINOIS FED. AID PROJECT				



TO BE USED:
 EXIT RAMP A- STA. 4669+00.00 TO STA. 4675+84.29
 ENTRANCE RAMP B - STA. 4697+30.00 TO STA. 4707+00.00
 ENTRANCE RAMP C- STA. 4665+97.46 TO STA. 4678+09.94
 EXIT RAMP D- STA. 4699+20.39 TO STA. 4706+14.78

MODEL: Default
 FILE: h:\m\c\p\pub\barroom.dwg
 PROJECT: 78740\CADD\Drawings\DOT - Office\Drawings\978740\CADD\Drawings\978740-Sheets.dwg

USER NAME = handycr	DESIGNED -	REVISED -
PLOT SCALE = 100.0000' / in.	DRAWN -	REVISED -
PLOT DATE = 6/2/2019	CHECKED -	REVISED -
	DATE -	REVISED -

**STATE OF ILLINOIS
 DEPARTMENT OF TRANSPORTATION**

**TYPICAL SECTION
 RAMP DETAILS**

SCALE: SHEET OF SHEETS STA. TO STA.

F.A.I. RTE.	SECTION	COUNTY	TOTAL SHEETS	SHEET NO.
64	(97-1.97-1-1)RS-2	WHITE	29	9
CONTRACT NO. 78740				
ILLINOIS FED. AID PROJECT				

RESURFACING SCHEDULE

LOCATION STATION TO STATION WHITE COUNTY			LENGTH	ROADWAY WIDTH	TEMP RAMP ***	HMA SUR. REMOVAL, 1 1/2" *	POLY HMA SURFACE COURSE, MIX D, N 90 (1 1/2")	BIT. MAT. (TACK COAT) *	LONG JOINT SEALANT **
			FOR INFORMATIONAL PURPOSE ONLY						
			(FT)	(FT)	(SQ YD)	(SQ YD)	(TON)	(LBS)	(FT)
I-64 EASTBOUND									
4632+36.00	TO	4650+75.52	1,840	24.0	14	4,907	416	2,208	1,840
4650+75.52	TO	4652+15.12	GAP STR. 097-0040						
4652+15.12	TO	4659+82.75	768	24.0	14	2,048	174	922	768
STA EQ 4659+82.75 BK = STA. 4660+00.00 AH									
4660+00.00	TO	4746+52.81	8,653	24.0	14	23,075	1,950	10,384	8,653
4746+52.81	TO	4746+86.66	GAP STR. 097-0042						
4746+86.66	TO	4760+43.05	1,357	24.0	14	3,619	306	1,629	1,357
STA EQ 4760+43.05 BK = STA. 5237+32.64 AH									
5237+32.64	TO	5328+11.16	9,079	24.0	14	24,211	2,045	10,895	9,079
5328+11.16	TO	5329+20.35	GAP STR. 097-0046						
5329+20.35	TO	5455+88.04	12,668	24.0	14	33,782	2,853	15,202	12,668
I-64 EASTBOUND SUB TOTAL					84	91,642	7,744	41,240	34,365
I-64 WESTBOUND									
4638+78.00	TO	4660+68.34	2,191	24.0	14	5,843	494	2,630	2,191
STA EQ 4660+68.34 BK = STA. 4660+00.00 AH									
4660+00.00	TO	4746+36.04	8,637	24.0	14	23,032	1,946	10,365	8,637
4746+36.04	TO	4746+68.68	GAP STR. 097-0043						
4746+68.68	TO	4760+43.05	1,375	24.0	14	3,667	310	1,650	1,375
STA EQ 4760+43.05 BK = STA. 5237+32.64 AH									
5237+32.64	TO	5327+58.16	9,026	24.0	14	24,070	2,033	10,832	9,026
5327+58.16	TO	5328+66.57	GAP STR. 097-0047						
5328+66.57	TO	5455+88.04	12,722	24.0	14	33,926	2,865	15,267	12,722
I-64 WESTBOUND SUB TOTAL					70	90,538	7,648	40,744	33,951
I-64 TOTALS					154	182,180	15,392	81,984	68,316

- * ADDITIONAL QUANTITIES, SEE SHOULDER PAVING/RUMBLE STRIPS AND RAMP SCHEDULES
- ** LJS LOCATED @ CENTERLINE JOINT

MODEL: Default
 FILE: \\blm1c1-pub\pub\rooms\dat\illinois\pwr\WIDOT\Documents\DOT_Offices\Director_9\Projects\78740\CADD\Drawings\9778740-Sheets.dgn

USER NAME = handycr	DESIGNED -	REVISED -	STATE OF ILLINOIS DEPARTMENT OF TRANSPORTATION	RESURFACING SCHEDULE				F.A.I. RTE.	SECTION	COUNTY	TOTAL SHEETS	SHEET NO.			
PLOT SCALE = 100,0000' / in.	CHECKED -	REVISED -		SCALE:	SHEET	OF	SHEETS	STA.	TO	STA.	64	(97-1,97-1-1)RS-2	WHITE	29	10
PLOT DATE = 6/2/2019	DATE -	REVISED -													
															CONTRACT NO. 78740

ILLINOIS FED. AID PROJECT

SHOULDER PAVING/RUMBLE STRIPS SCHEDULE

LOCATION STATION TO STATION JACKSON COUNTY				FOR INFORMATIONAL PURPOSE ONLY			HMA SUR. REMOVAL 1 1/2" *	SHOULDER RUMBLE STRIPS 16"	HMA SHLDER (1 1/2") ****	BIT. MATERIALS (TACK COAT) *	TEMP RAMP *
				LENGTH	LT PAVE SHLDER WIDTH	RT PAVE SHLDER WIDTH					
				(FT)	(FT)	(FT)					
(SQ. YD.)				(FT)	(TON)	(POUNDS)					
I-64 EASTBOUND											
4632+36.00	TO	4650+75.06	1,840	6.0	10.0	3,272	3,680	276	1,472	18	
4650+75.06 TO 4652+15.12			GAP STR. 097-0040								
4652+15.12	TO	4659+82.75	768	6.0	10.0	1,366	1,536	116	615	9	
STA EQ 4659+82.75 BK = STA. 4660+00.00 AH											
4660+00.00	TO	4746+52.81	8,653	6.0	10.0	15,384	17,306	1,293	6,923	9	
4746+52.81 TO 4746+86.66			GAP STR. 097-0043								
4746+86.66	TO	4760+43.05	1,357	6.0	10.0	2,413	2,714	203	1,087	9	
STA EQ 4760+43.05 BK = STA. 5237+32.64 AH											
5237+32.64	TO	5328+11.16	9,079	6.0	10.0	16,141	18,158	1,357	7,264	9	
5328+11.16 TO 5329+20.35			GAP STR. 097-0047								
5329+20.35	TO	5455+88.04	12,668	6.0	10.0	22,522	25,336	1,893	10,135	9	
I-64 EASTBOUND TOTAL						61,098	68,730	5,138	27,496	62	
I-64 WESTBOUND											
4638+78.00	TO	4660+68.34	2,191	10.0	6.0	3,896	4,382	328	1,754	9	
STA EQ 4660+68.34 BK = STA. 4660+00.00 AH											
4660+00.00	TO	4746+36.04	8,637	10.0	6.0	15,355	17,274	1,291	6,911	9	
4746+36.04 TO 4746+68.68			GAP STR. 0042								
4746+68.68	TO	4760+43.05	1,375	10.0	6.0	2,445	2,750	206	1,101	9	
STA EQ 4760+43.05 BK = STA. 5237+32.64 AH											
5237+32.64	TO	5327+58.16	9,026	10.0	6.0	16,047	18,052	1,349	7,221	9	
5327+58.16 TO 5328+66.57			GAP STR. 0046								
5328+66.57	TO	5455+88.04	12,722	10.0	6.0	22,618	25,444	1,901	10,178	18	
I-64 WESTBOUND TOTAL						60,361	67,902	5,075	27,165	53	
I-64 TOTAL						121,459	136,632	10,213	54,661	116	

* ADDITIONAL QUANTITIES, SEE MAINLINE RESURFACING AND RAMP SCHEDULES
 **** ADDITIONAL QUANTITIES, SEE RAMP SCHEDULES

MODEL: Default
 FILE: h:\mhc\p\pub\haronom.d\illinois\p\p\DOT\Documents\DOT_Offices\Illin\ct_9\Projects\78740\CADD\Drawings\9778740-Sheets.dgn

USER NAME = handycr	DESIGNED -	REVISED -	STATE OF ILLINOIS DEPARTMENT OF TRANSPORTATION	SHOULDER SCHEDULE				F.A.I. RTE.	SECTION	COUNTY	TOTAL SHEETS	SHEET NO.			
PLOT SCALE = 100,0000' / in.	CHECKED -	REVISED -		SCALE:	SHEET	OF	SHEETS	STA.	TO	STA.	64	(97-1,97-1-1)RS-2	WHITE	29	11
PLOT DATE = 6/2/2019	DATE -	REVISED -		CONTRACT NO. 78740											
ILLINOIS FED. AID PROJECT															

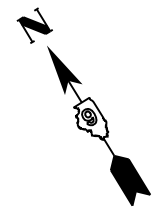
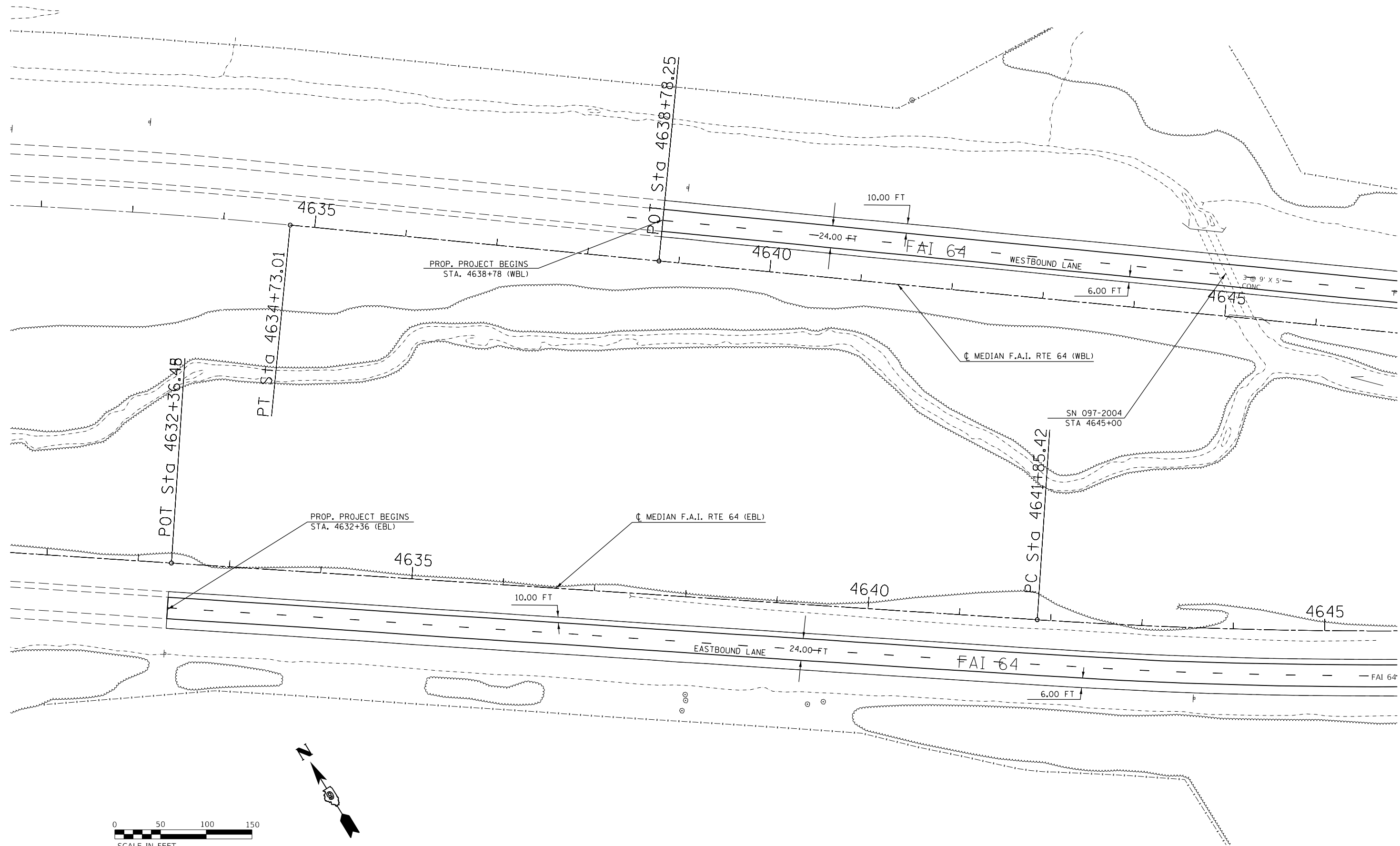
RESURFACING SCHEDULE - RAMPS

LOCATION	LENGTH (INFO ONLY)	EXIST. PAVE WIDTH	LT SHLDR WIDTH	RT SHLDR WIDTH	TEMP. RAMPS ***	HMA SURFACE REMOVAL, 1 1/2" *	POLY HOT-MIX ASP. SUR. CSE., MIX D, N 90 (1 1/2") **	HMA SHLDRS (1 1/2") ****	BIT. MAT'LS. (TACK COAT) *	NOTES			
											FEET	FEET	FEET
RAMP A (EASTBOUND) EXIT													
I-64 EASTBOUND	4669+00	TO	4675+85										
MAIN RAMP	4669+00	TO	4671+51	252	VARIOUS			224	20	101	AREA OF TRIANGLE		
MAIN STATION RAMP (HMA)	4671+51	TO	4675+55	404	16	4	6	1,168	62	38	SURFACE REMOVAL & BIT. MAT'LS. INCLUDES SHOULDER WIDTH		
MAIN STATION RAMP (CONC.)	+25	TO	9+37	913	16	4	6	9	1,015	86		457	
RAMP B (EASTBOUND) ENTRANCE													
I-64 EASTBOUND	4697+30	TO	4707+00										
MAIN RAMP	4701+92	TO	4707+00	509	VAR.			453	40	204	AREA OF TRIANGLE		
MAIN STATION RAMP (HMA)	4697+30	TO	4701+92	462	16	4	6	9	1,335	70	44	SURFACE REMOVAL & BIT. MAT'LS. INCLUDES SHOULDER WIDTH	
MAIN STATION RAMP (CONC.)	+08	TO	15+96	1,588	16	4	6		1,765	149	794		
RAMP C (WESTBOUND) ENTRANCE													
I-64 WESTBOUND	4665+97	TO	4678+10										
MAIN RAMP	4665+97	TO	4673+18	721	VAR.			641	55	289	AREA OF TRIANGLE		
MAIN STATION RAMP (HMA)	4673+18	TO	4678+10	493	16	4	6	9	1,425	75	47	SURFACE REMOVAL & BIT. MAT'LS. INCLUDES SHOULDER WIDTH	
MAIN STATION RAMP (CONC.)	+13	TO	16+50	1,638	16	4	6		1,820	153	819		
RAMP D (WESTBOUND) EXIT													
I-64 WESTBOUND	4699+20	TO	4706+15										
MAIN RAMP	4703+39	TO	4706+15	276	VAR.			246	22	111	AREA OF TRIANGLE		
MAIN STATION RAMP (HMA)	4699+20	TO	4703+39	419	16	4	6	9	1,211	64	40	SURFACE REMOVAL & BIT. MAT'LS. INCLUDES SHOULDER WIDTH	
MAIN STATION RAMP (CONC.)	+35	TO	10+25	991	16	4	6		1,102	93	496		
RAMP TOTALS								36	12,405	408	650	5,584	

- * ADDITIONAL QUANTITIES, SEE SHOULDER PAVING/RUMBLE STRIPS AND RESURFACING SCHEDULES
- ** ADDITIONAL QUANTITIES, SEE RESURFACING MAINLINE
- *** ADDITIONAL QUANTITIES, SEE RESURFACING SCHEDULES
- **** ADDITIONAL QUANTITIES, SEE SHOULDER SCHEDULES

MODEL: Default
 FILE: Mainfile_PlanSubarea.dwg
 PROJECT: 78740-CADDATA-CADDATA-0978740-Sheets.dgn

MODEL: Default
 FILE: h:\mhc\p\pub\barroom.dwg
 PROJECT: 78740\CADD\DATA\CADD\Sheet\09778740-Sheets.dgn



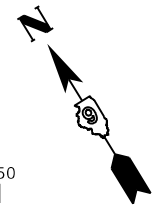
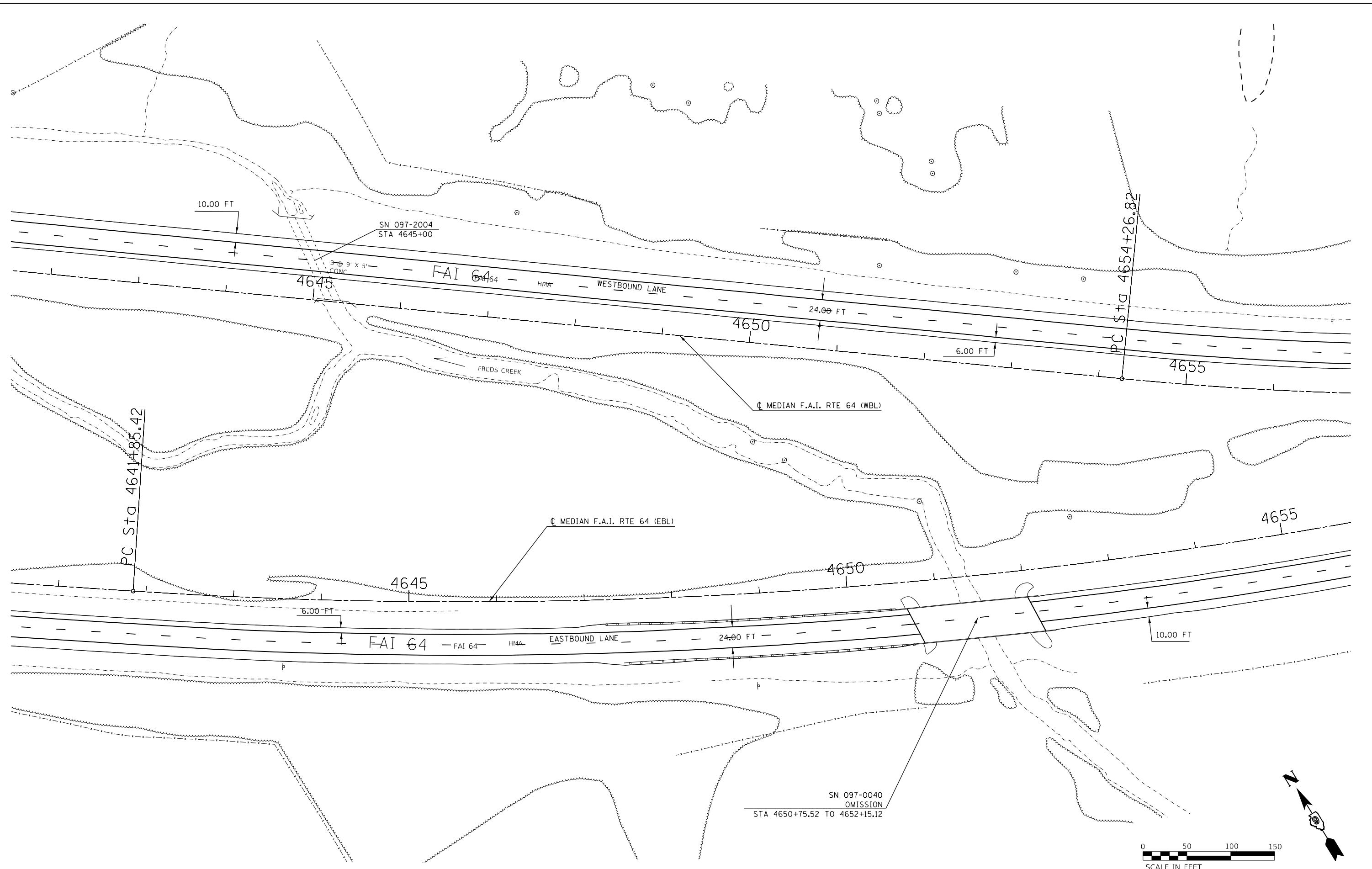
USER NAME = handyc	DESIGNED -	REVISED -
PLOT SCALE = 100.0000' / in.	DRAWN -	REVISED -
PLOT DATE = 6/2/2019	CHECKED -	REVISED -
	DATE -	REVISED -

**STATE OF ILLINOIS
 DEPARTMENT OF TRANSPORTATION**

I-64 PLAN			
SCALE:	SHEET	OF	SHEETS
			STA. 4632+00 TO STA. 4645+00

F.A.I. RTE.	SECTION	COUNTY	TOTAL SHEETS	SHEET NO.
64	(97-1.97-1-1)RS-2	WHITE	29	15
CONTRACT NO. 78740				
ILLINOIS FED. AID PROJECT				

MODEL: Default
 FILE: h:\a11\c:\pub\harcross\dat\illinois\gov\pww\DOT\Documents\DOT_Offices\Director_9\Projects\78740\CADD\DATA\CADD\Sheets\09778740-Sheets.dgn

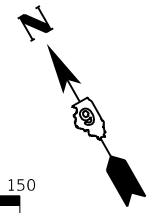
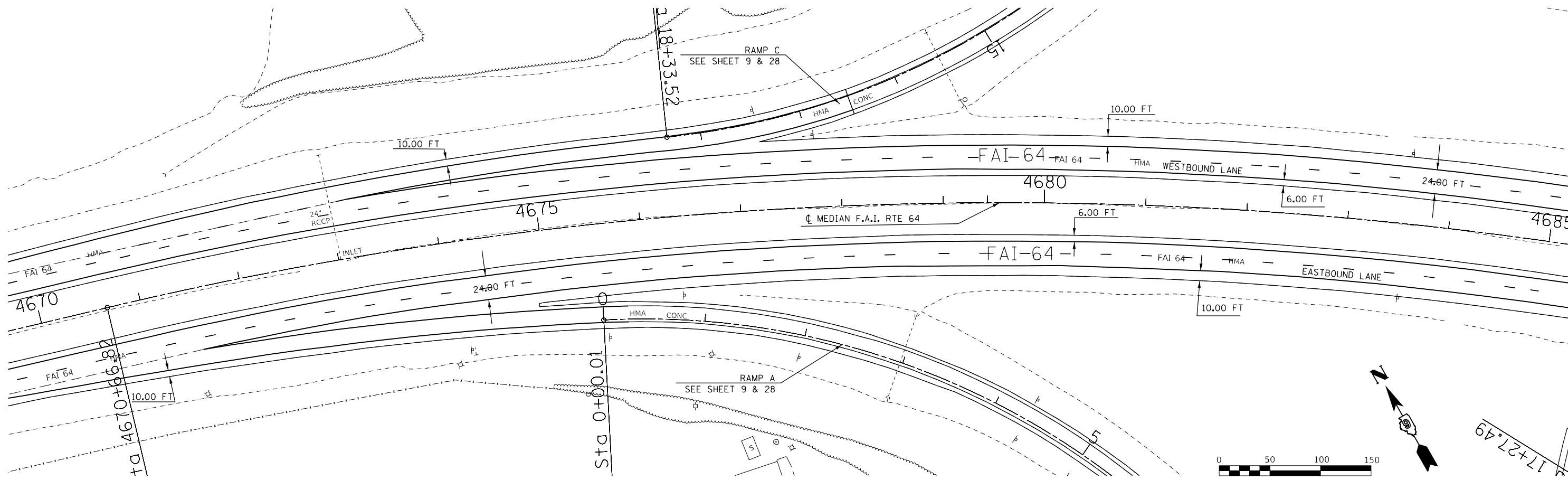
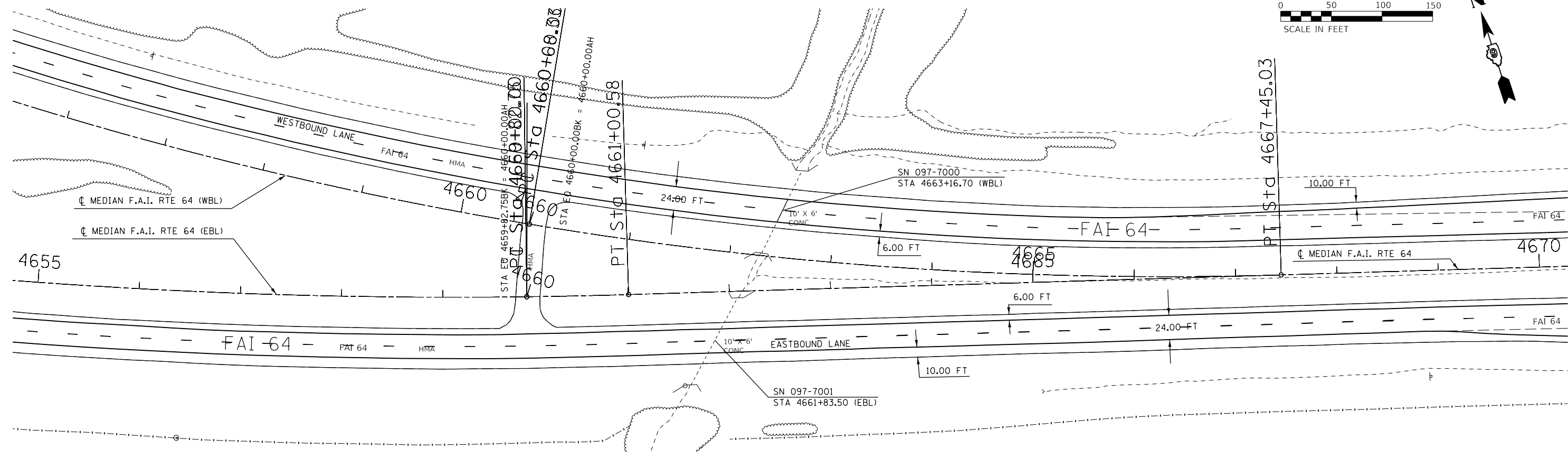


USER NAME = handycr	DESIGNED -	REVISED -
	DRAWN -	REVISED -
PLOT SCALE = 100.0000' / in.	CHECKED -	REVISED -
PLOT DATE = 6/2/2019	DATE -	REVISED -

**STATE OF ILLINOIS
 DEPARTMENT OF TRANSPORTATION**

I-64 PLAN			
SCALE:	SHEET	OF	SHEETS
			STA. 4641+00 TO STA. 4655+00

F.A.I. RTE.	SECTION	COUNTY	TOTAL SHEETS	SHEET NO.
64	(97-1.97-1-1)RS-2	WHITE	29	16
CONTRACT NO. 78740				
ILLINOIS FED. AID PROJECT				



17+27.49

MODEL: Default
 FILE: \\nrcs\pub\baronm.dwg
 PROJECT: 78740\CADD\DATA\CAD\Drawings\978740-Sheets.dwg

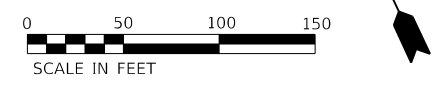
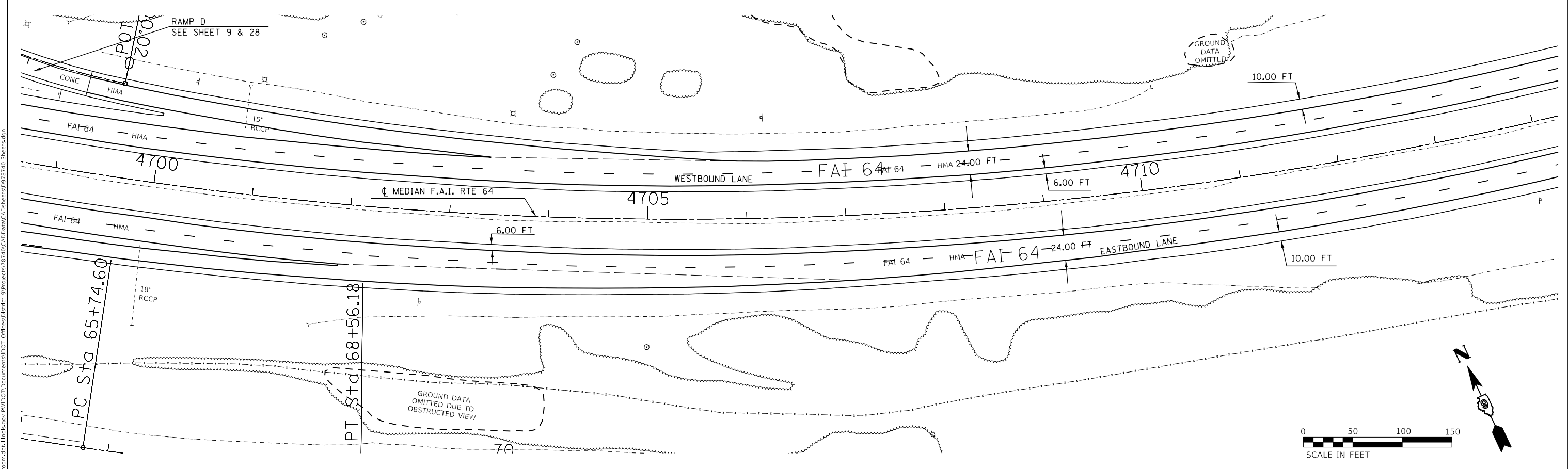
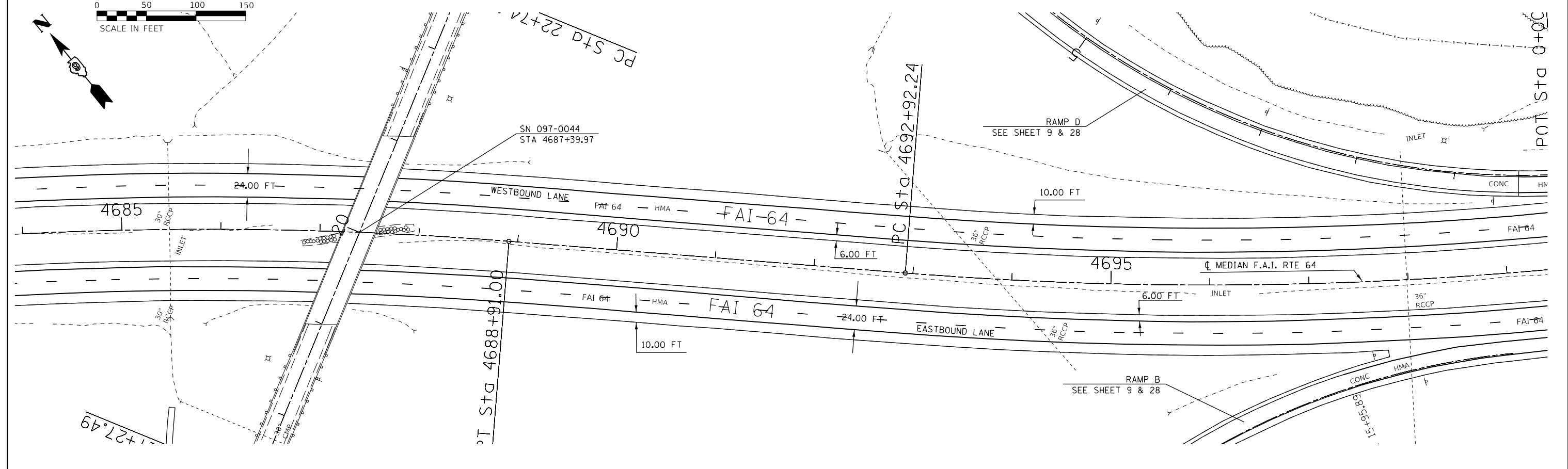
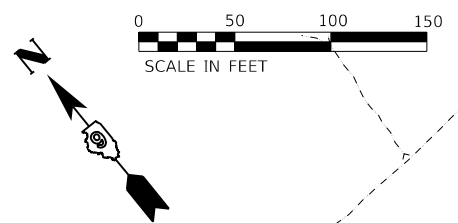
USER NAME = handyc	DESIGNED -	REVISED -
PLOT SCALE = 100.0000' / in.	DRAWN -	REVISED -
PLOT DATE = 6/2/2019	CHECKED -	REVISED -
	DATE -	REVISED -

**STATE OF ILLINOIS
DEPARTMENT OF TRANSPORTATION**

I-64 PLAN

SCALE: SHEET OF SHEETS STA. 4655+00 TO STA. 4685+00

F.A.I. RTE.	SECTION	COUNTY	TOTAL SHEETS	SHEET NO.
64	(97-1.97-1-1)RS-2	WHITE	29	17
CONTRACT NO. 78740				
ILLINOIS FED. AID PROJECT				



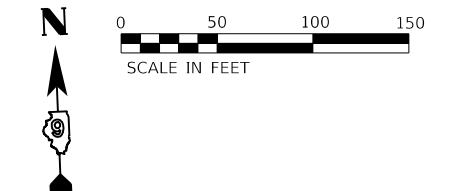
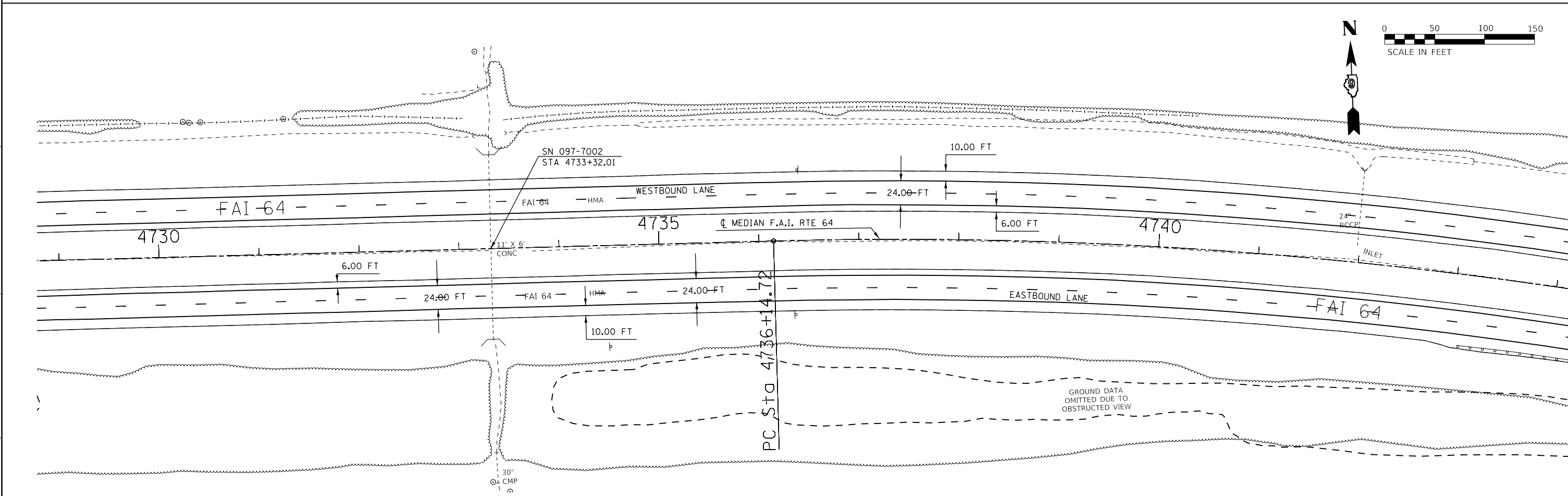
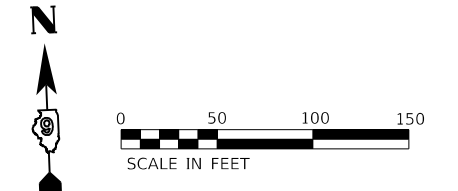
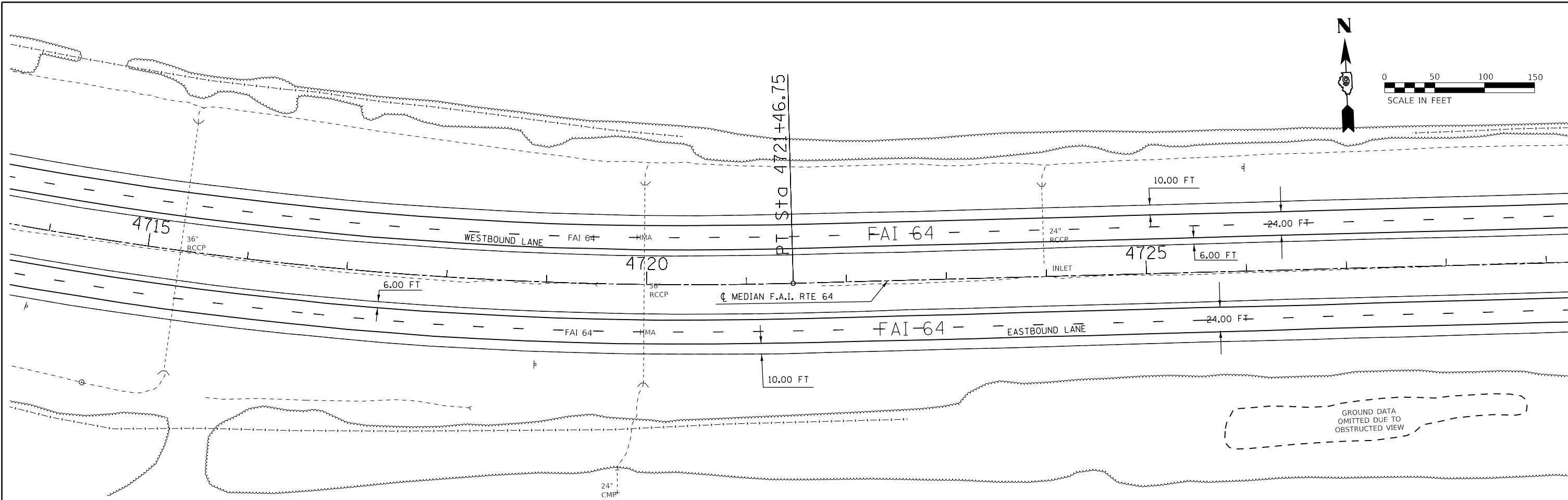
MODEL: Default
 FILE: \\nas01c.psu.edu\baronm.d\illinois\pww\DOT\Documents\DOT_Offices\District_9\Projects\78740\CADD\Drawings\978740-Sheets.dwg

USER NAME = handycr	DESIGNED -	REVISED -
PLOT SCALE = 100.0000' / in.	DRAWN -	REVISED -
PLOT DATE = 6/2/2019	CHECKED -	REVISED -
	DATE -	REVISED -

STATE OF ILLINOIS
DEPARTMENT OF TRANSPORTATION

I-64 PLAN			
SCALE:	SHEET	OF	SHEETS
			STA. 4685+00 TO STA. 4714+00

F.A.I. RTE. 64	SECTION (97-1.97-1-1)RS-2	COUNTY WHITE	TOTAL SHEETS 29	SHEET NO. 18
CONTRACT NO. 78740				
ILLINOIS		FED. AID PROJECT		



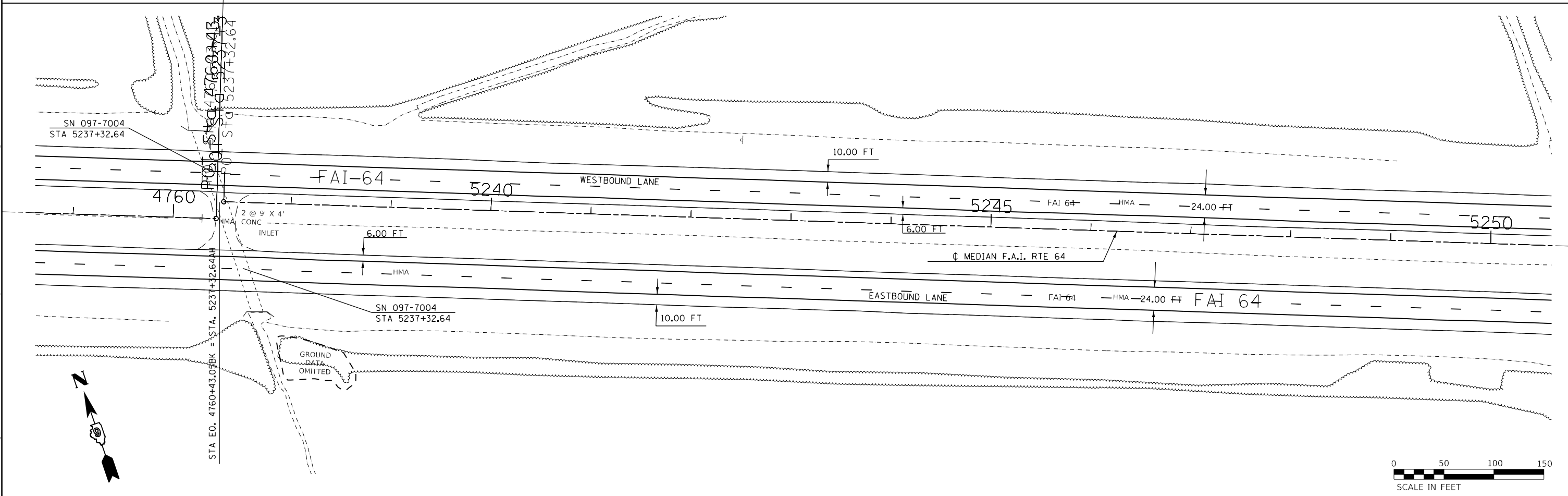
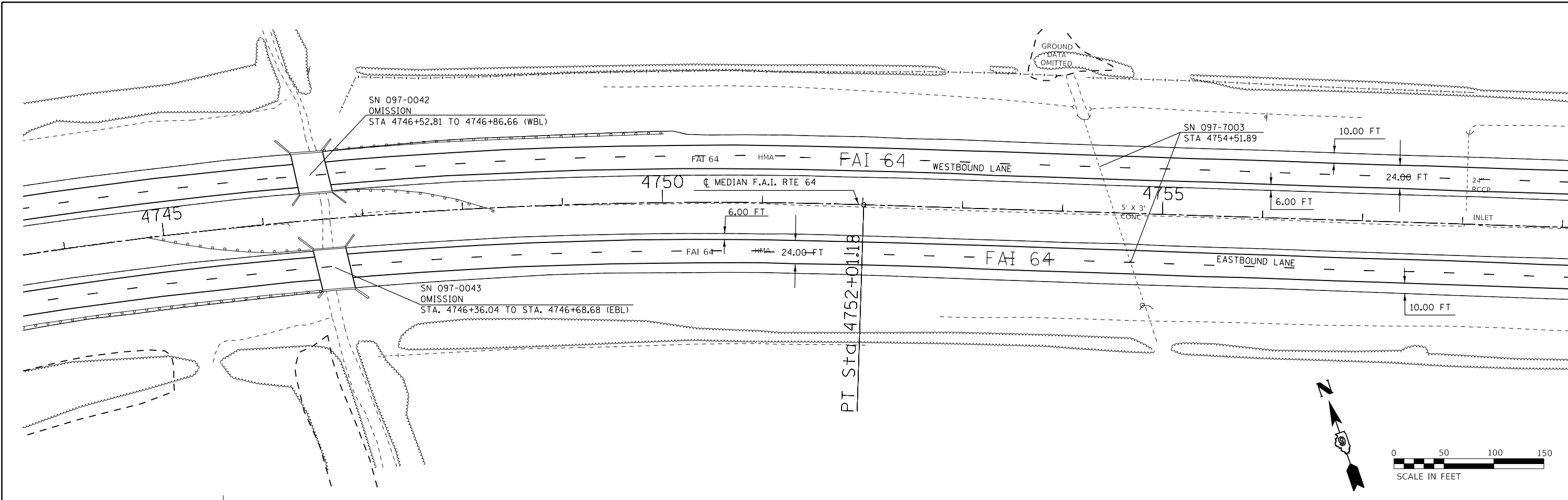
MODEL: Default
 FILE: h:\mhc\p\pub\barroom.dwg\illinois\dot\Documents\DOT_Offices\Director_9\Projects\78740\CADD\Drawings\9778740-Sheets.dwg

USER NAME = handycr	DESIGNED -	REVISED -
PLOT SCALE = 100.0000' / in.	DRAWN -	REVISED -
PLOT DATE = 6/2/2019	CHECKED -	REVISED -
	DATE - 4744+00	REVISED -

STATE OF ILLINOIS
DEPARTMENT OF TRANSPORTATION

I-64 PLAN			
SCALE:	SHEET	OF SHEETS	STA. TO STA. 4714+00

F.A.I. RTE.	SECTION	COUNTY	TOTAL SHEETS	SHEET NO.
64	(97-1.97-1-1)RS-2	WHITE	29	19
CONTRACT NO. 78740				
ILLINOIS FED. AID PROJECT				



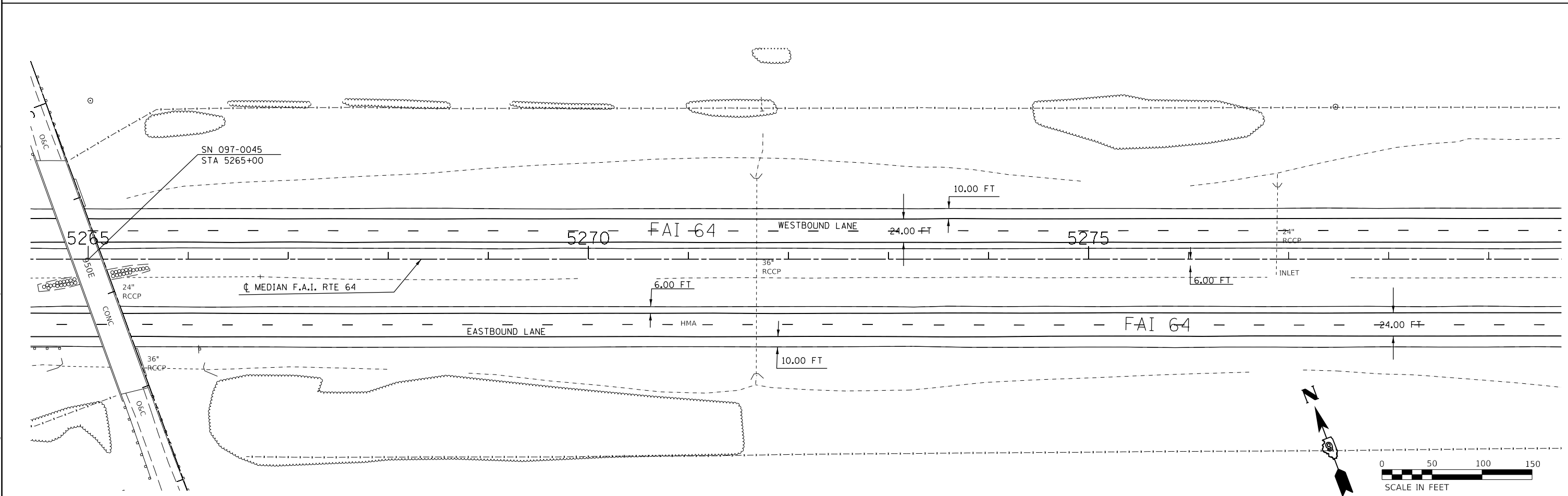
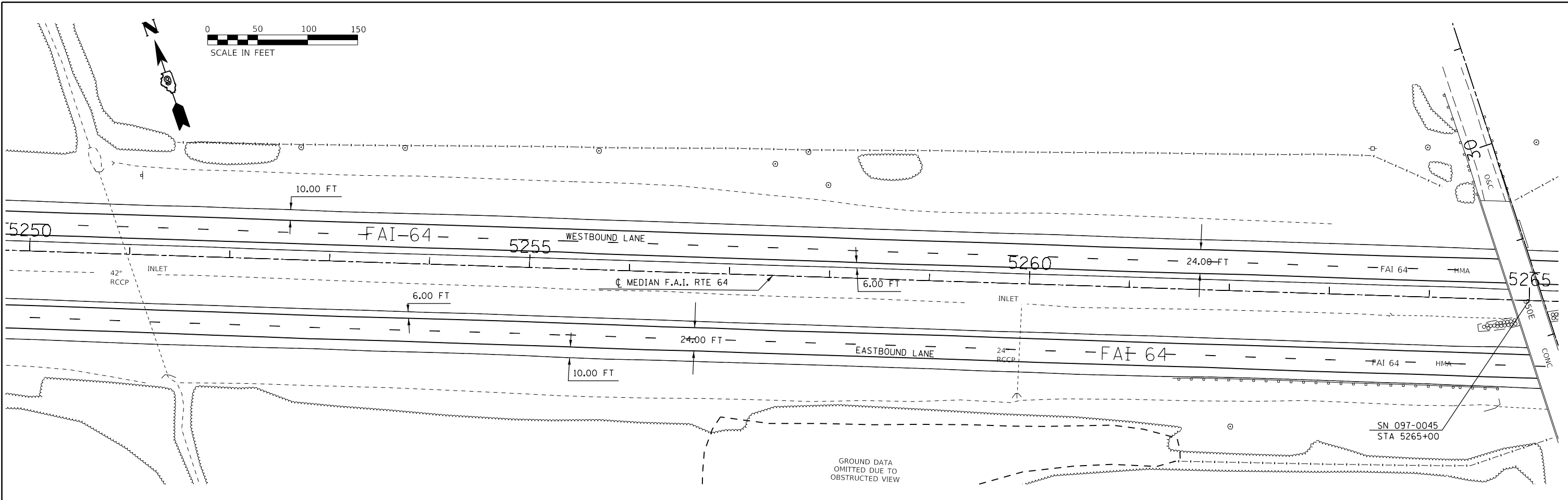
MODEL: Default
 FILE: h:\m\c\pub\barroom.dwg
 PROJECT: 78740\CADD\DATA\CADD\Sheet\97740-Sheets.dwg

USER NAME = handyc	DESIGNED -	REVISED -
PLOT SCALE = 100.0000' / in.	DRAWN -	REVISED -
PLOT DATE = 6/2/2019	CHECKED -	REVISED -
	DATE -	REVISED -

STATE OF ILLINOIS
DEPARTMENT OF TRANSPORTATION

I-64 PLAN
 SCALE: SHEET OF SHEETS STA. 4744+00 TO STA. 5250+00

F.A.I. RTE.	SECTION	COUNTY	TOTAL SHEETS	SHEET NO.
64	(97-1.97-1-1)RS-2	WHITE	29	20
CONTRACT NO. 78740				
ILLINOIS FED. AID PROJECT				



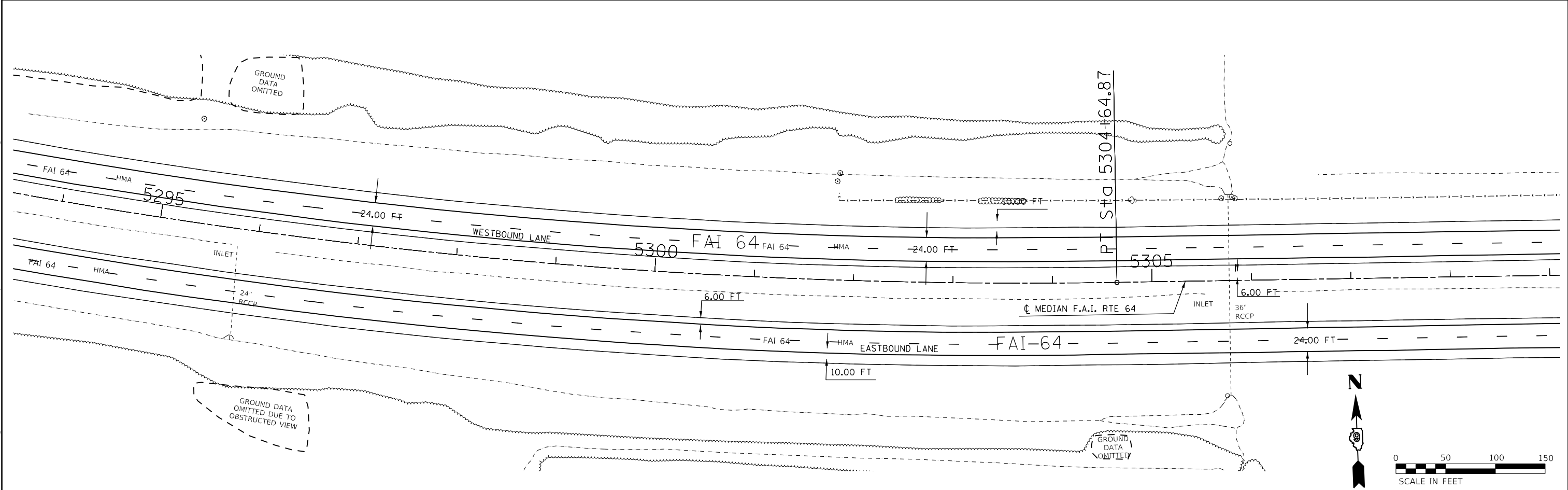
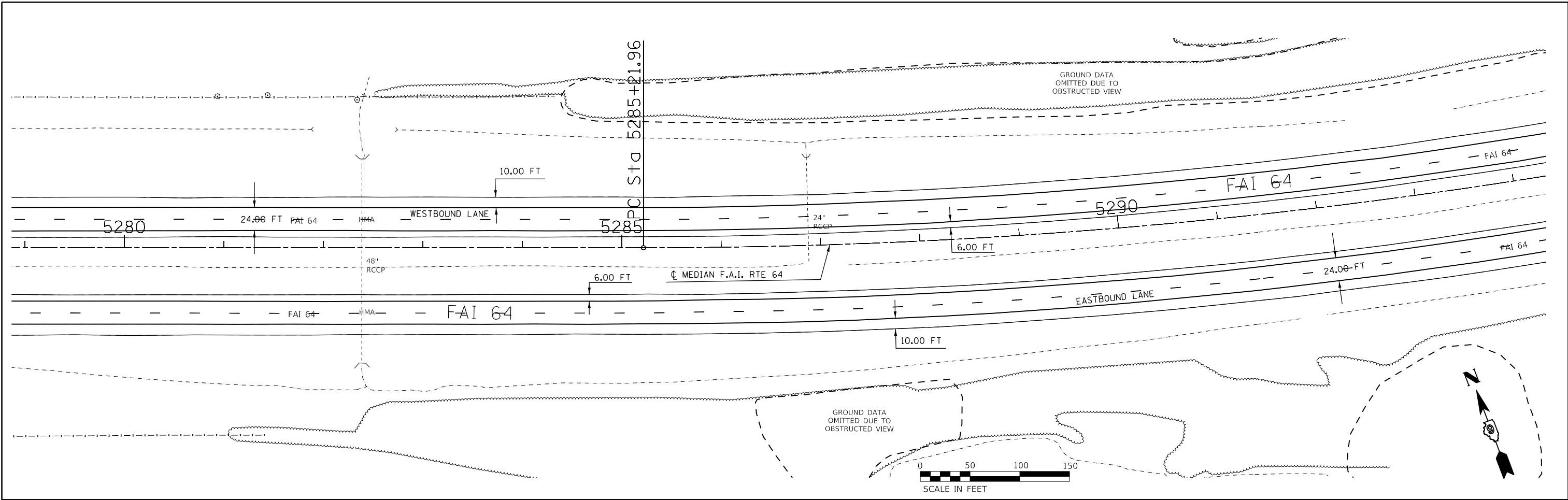
MODEL: Default
 FILE: h:\mhc\pub\pubroom\dat\illinois\dot\Documents\DOT_Offices\Director_9\Projects\78740\CADD\DATA\CADD\Sheets\09778740-Sheets.dgn

USER NAME = handycr	DESIGNED -	REVISED -
PLOT SCALE = 100.0000' / in.	DRAWN -	REVISED -
PLOT DATE = 6/2/2019	CHECKED -	REVISED -
	DATE -	REVISED -

STATE OF ILLINOIS
DEPARTMENT OF TRANSPORTATION

I-64 PLAN	
SCALE:	SHEET OF SHEETS STA. 5250+00 TO STA. 5279+00

F.A.I. RTE.	SECTION	COUNTY	TOTAL SHEETS	SHEET NO.
64	(97-1.97-1-1)RS-2	WHITE	29	21
CONTRACT NO. 78740				
ILLINOIS FED. AID PROJECT				



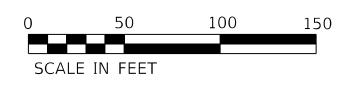
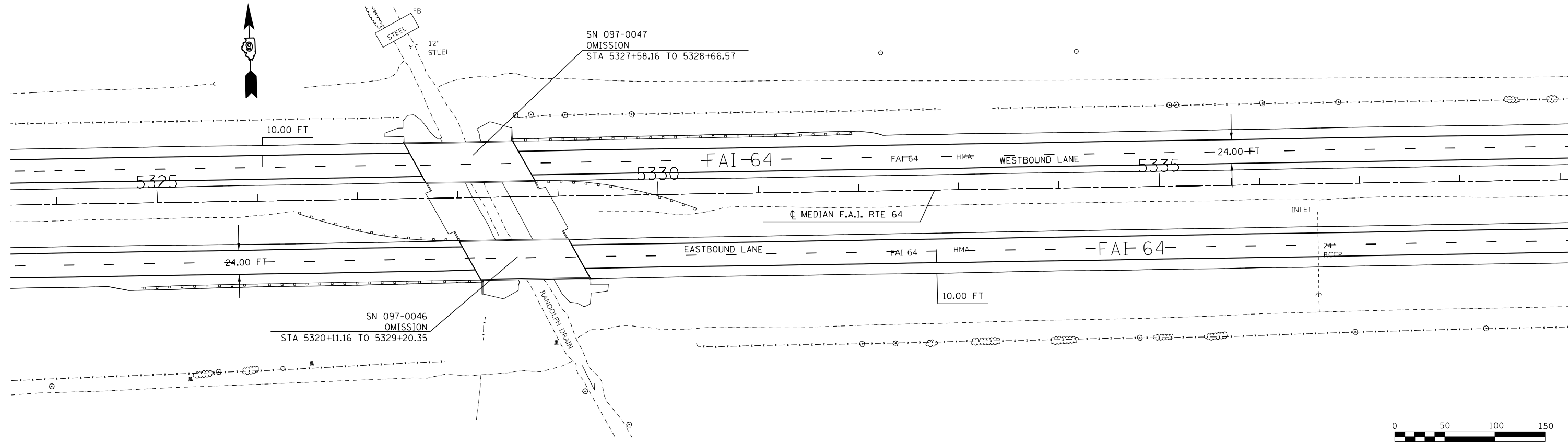
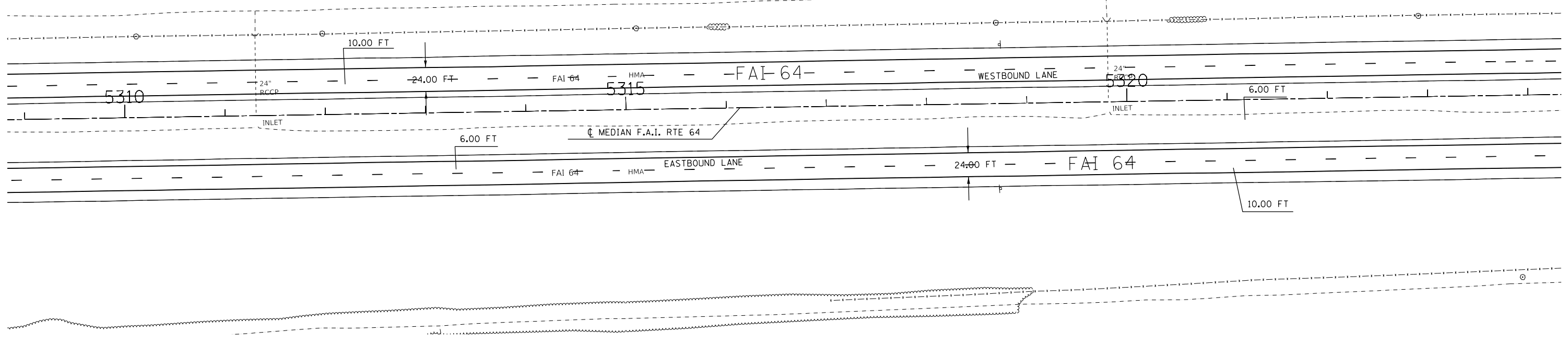
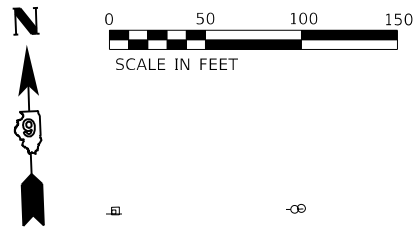
MODEL: Default
 FILE: h:\mhc\pub\barroom.dwg
 PROJECT: 78740\CADD\DATA\CADD\Drawings\DOT\Office\Drawings\9\Projects\78740\CADD\DATA\CADD\Drawings\9\78740-Sheets.dwg

USER NAME = handycr	DESIGNED -	REVISED -
PLOT SCALE = 100.0000' / in.	DRAWN -	REVISED -
PLOT DATE = 6/2/2019	CHECKED -	REVISED -
	DATE -	REVISED -

STATE OF ILLINOIS
DEPARTMENT OF TRANSPORTATION

I-64 PLAN
 SCALE: SHEET OF SHEETS STA. 5279+00 TO STA. 5309+00

F.A.I. RTE.	SECTION	COUNTY	TOTAL SHEETS	SHEET NO.
64	(97-1.97-1-1)RS-2	WHITE	29	22
CONTRACT NO. 78740				
ILLINOIS FED. AID PROJECT				



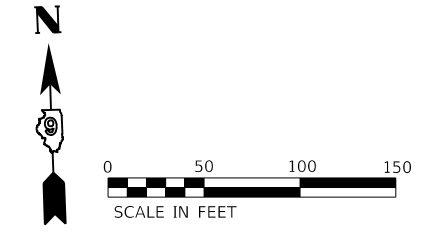
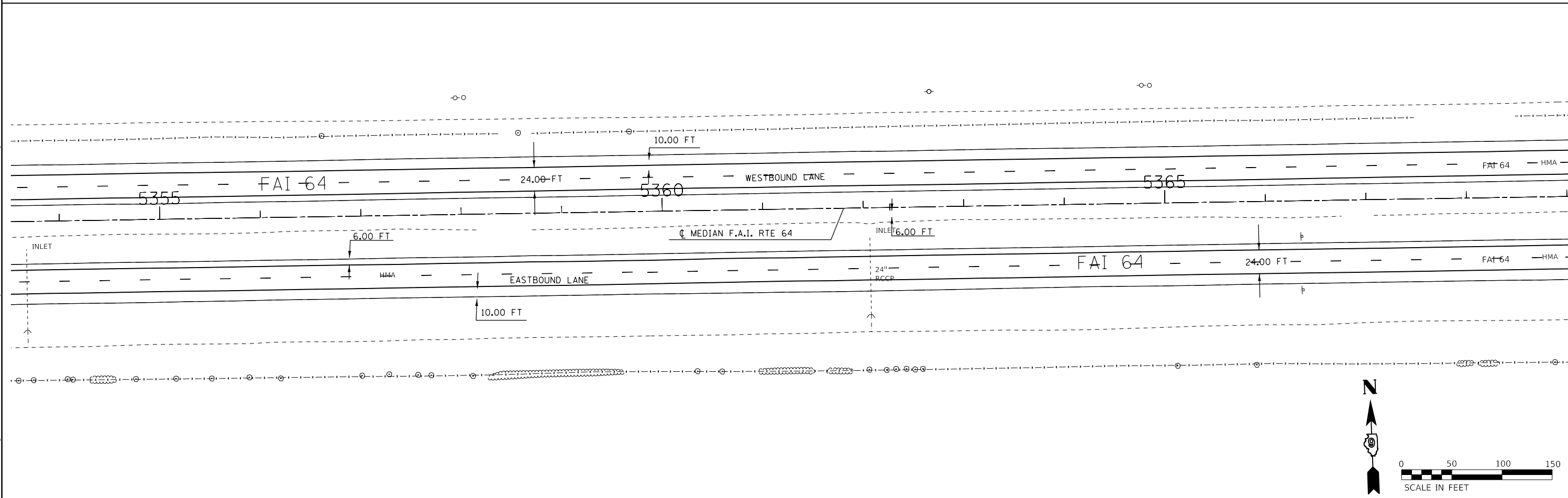
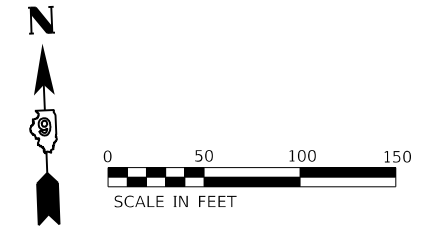
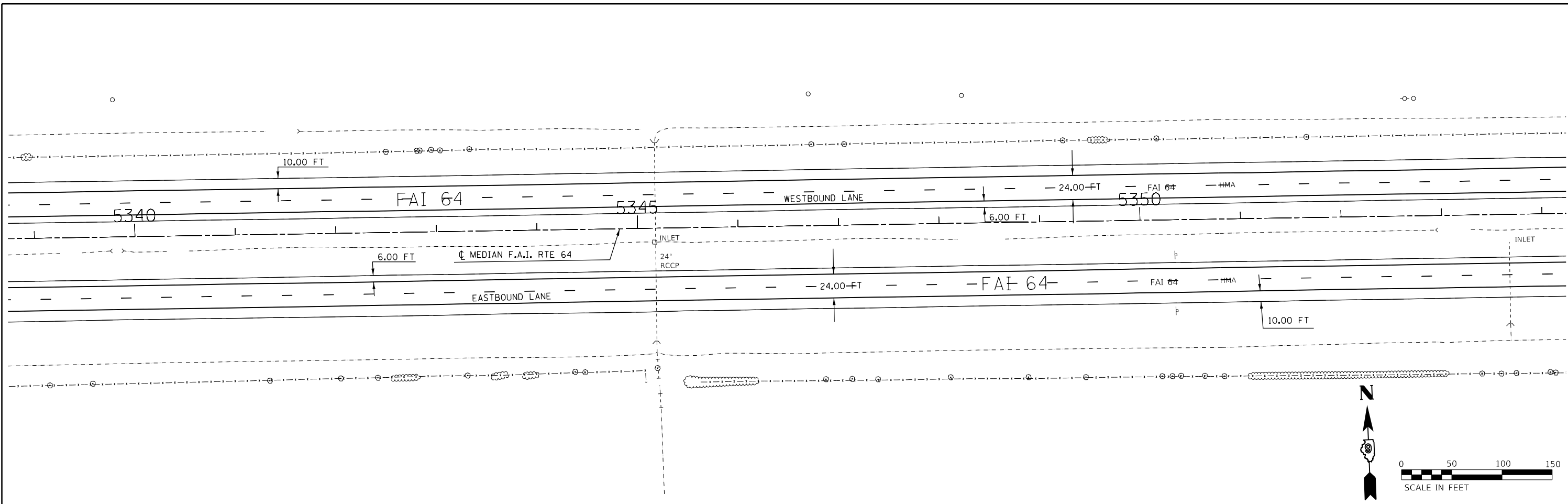
MODEL: Default
 FILE: h:\mhc\p\suplanroom.d\illinois.gov\PIWDOT\Documents\DOT_Offices\District_9\Projects\78740\CADD\Drawings\9778740-Sheets.dgn

USER NAME = handycr	DESIGNED -	REVISED -
PLOT SCALE = 100.0000' / in.	DRAWN -	REVISED -
PLOT DATE = 6/2/2019	CHECKED -	REVISED -
	DATE -	REVISED -

STATE OF ILLINOIS
DEPARTMENT OF TRANSPORTATION

I-64 PLAN	
SCALE:	SHEET OF SHEETS STA. 5309+00 TO STA. 5339+00

F.A.I. RTE.	SECTION	COUNTY	TOTAL SHEETS	SHEET NO.
64	(97-1.97-1-1)RS-2	WHITE	29	23
CONTRACT NO. 78740				
ILLINOIS FED. AID PROJECT				



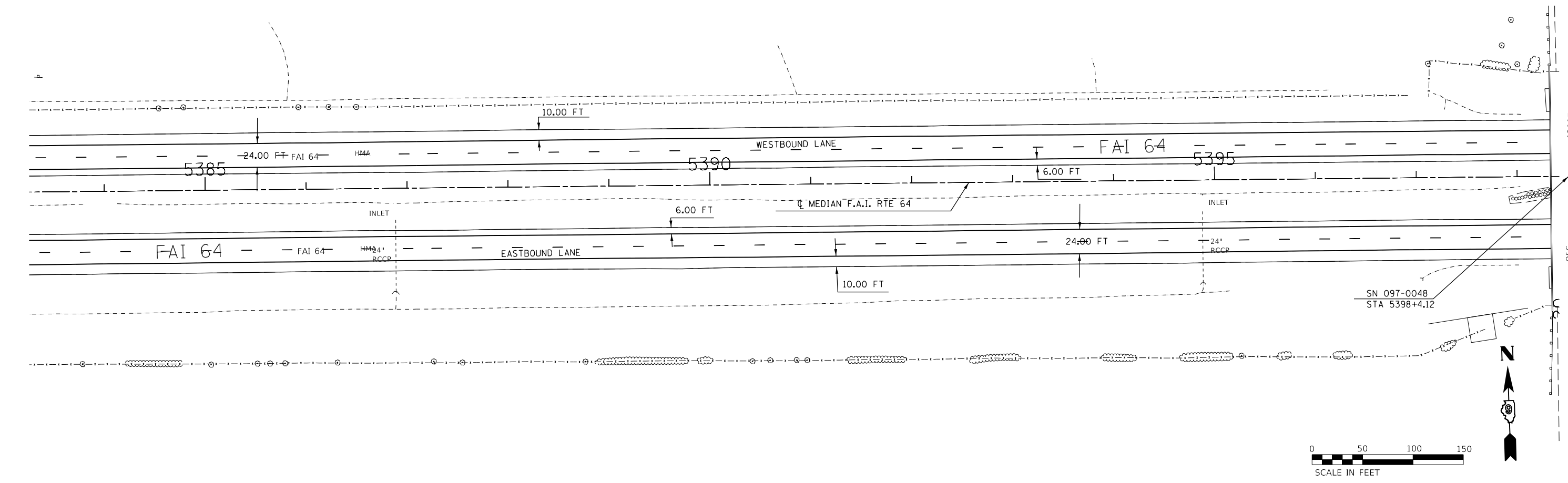
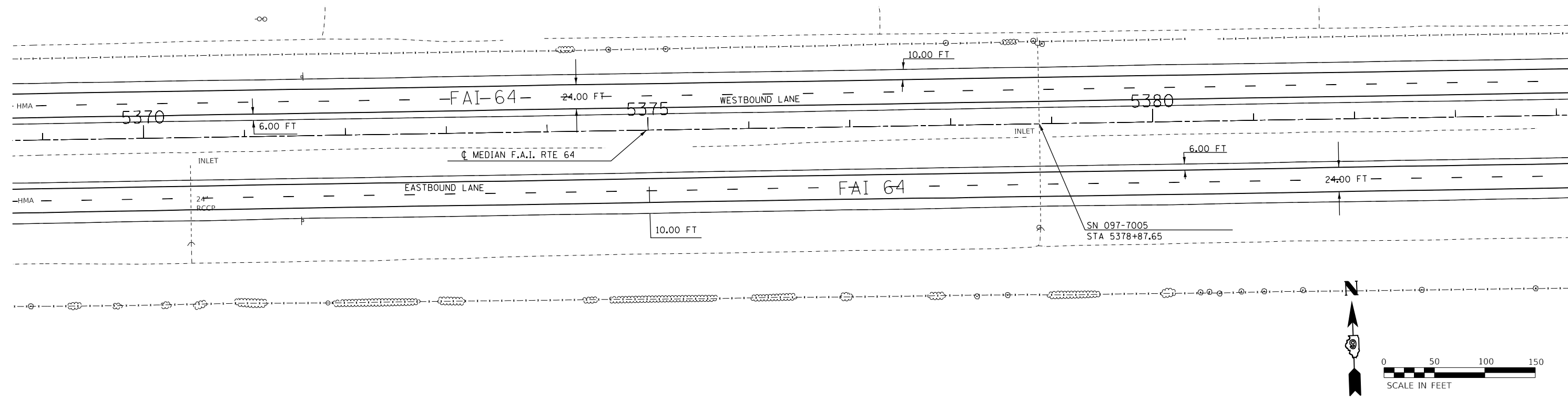
MODEL: Default
 FILE: \\nrcs-pub\pub\barroom.dwg
 PROJECT: 78740\CADD\Drawings\DOT Office\Drawings\978740-Sheets.dwg

USER NAME = handycr	DESIGNED -	REVISED -
	DRAWN -	REVISED -
PLOT SCALE = 100.0000' / in.	CHECKED -	REVISED -
PLOT DATE = 6/2/2019	DATE -	REVISED -

STATE OF ILLINOIS
DEPARTMENT OF TRANSPORTATION

I-64 PLAN			
SCALE:	SHEET	OF	SHEETS
			STA. 5339+00 TO STA. 5369+00

F.A.I. RTE.	SECTION	COUNTY	TOTAL SHEETS	SHEET NO.
64	(97-1.97-1-1)RS-2	WHITE	29	24
CONTRACT NO. 78740				
ILLINOIS FED. AID PROJECT				



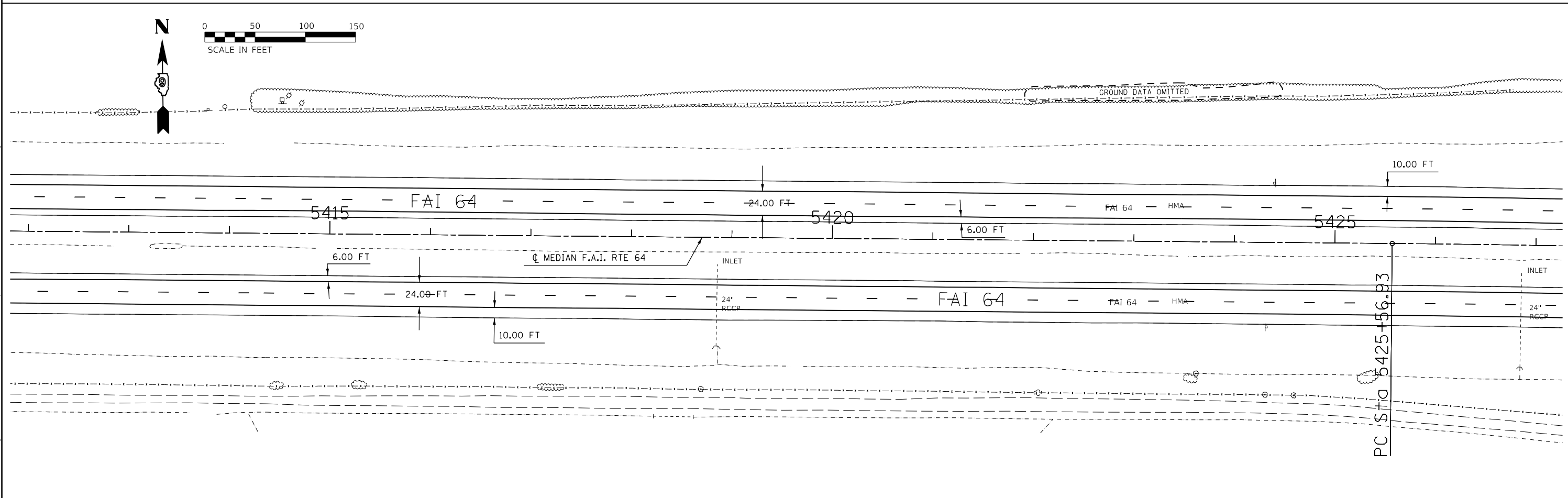
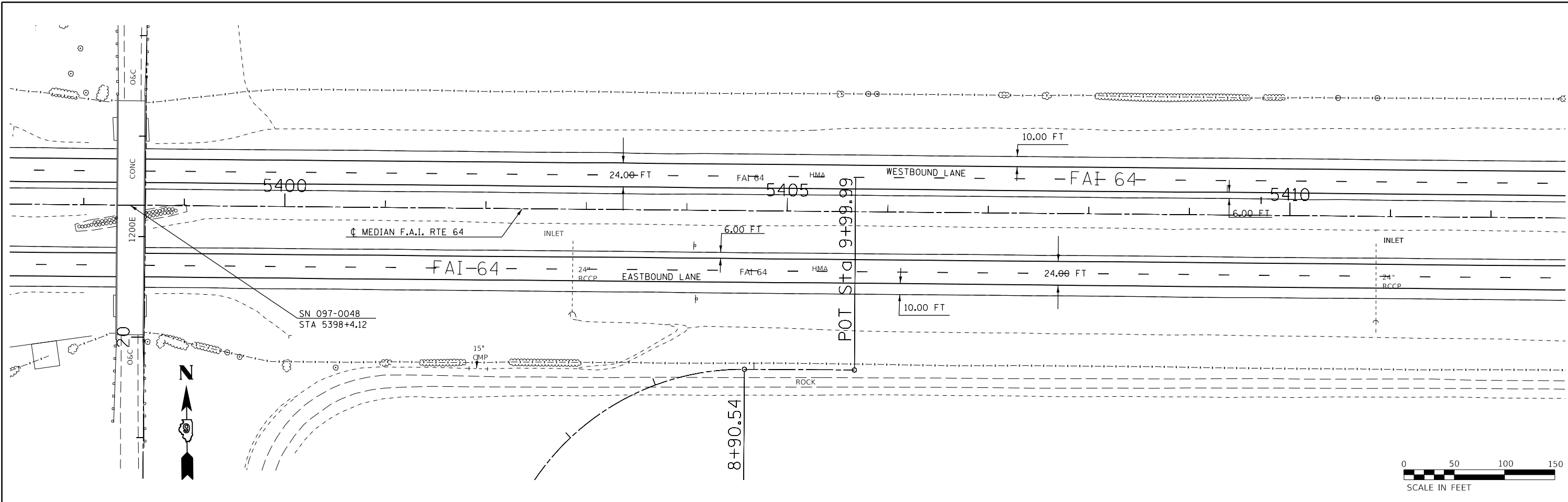
MODEL: Default
 FILE: h:\mhc\p\pub\haronom.dwg
 PROJECT: 78740\CADD\DATA\CADD\Drawings\9778740-Sheets.dwg

USER NAME = handycr	DESIGNED -	REVISED -
PLOT SCALE = 100.0000' / in.	DRAWN -	REVISED -
PLOT DATE = 6/2/2019	CHECKED -	REVISED -
	DATE -	REVISED -

STATE OF ILLINOIS
DEPARTMENT OF TRANSPORTATION

I-64 PLAN	
SCALE:	SHEET OF SHEETS STA. 5369+00 TO STA. 5398+00

F.A.I. RTE. 64	SECTION (97-1.97-1)RS-2	COUNTY WHITE	TOTAL SHEETS 29	SHEET NO. 25
CONTRACT NO. 78740				
ILLINOIS FED. AID PROJECT				



MODEL: Default
 FILE: h:\mhc\p\pub\barroom.dwg
 PROJECT: 78740\CADD\Drawings\DOT_Offices\Drawings\978740\CADD\Drawings\DOT_78740-Sheets.dwg

USER NAME = handycr	DESIGNED -	REVISED -
PLOT SCALE = 100.0000' / in.	DRAWN -	REVISED -
PLOT DATE = 6/2/2019	CHECKED -	REVISED -
	DATE -	REVISED -

STATE OF ILLINOIS
DEPARTMENT OF TRANSPORTATION

I-64 PLAN			
SCALE:	SHEET	OF	SHEETS
			STA. 5399+00 TO STA. 5427+00

F.A.I. RTE.	SECTION	COUNTY	TOTAL SHEETS	SHEET NO.
64	(97-1.97-1-1)RS-2	WHITE	29	26
CONTRACT NO. 78740				
ILLINOIS FED. AID PROJECT				

