

STATE OF ILLINOIS
DEPARTMENT OF TRANSPORTATION

F.A.P. RTE.	SECTION	COUNTY	TOTAL SHEETS	SHEET NO.
525	2021-157-RS	MCHENRY	25	1
		ILLINOIS	CONTRACT NO. 62P74	

FOR INDEX OF SHEETS, SEE SHEET NO. 02

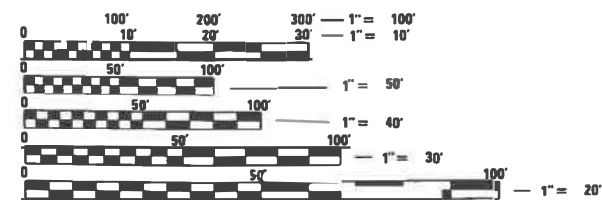
PROJECT LOCATED IN THE
CITY OF MARENGO

TRAFFIC DATA
ADT 2019: 10150 VPD
SPEED LIMIT: 30 MPH

PROPOSED
HIGHWAY PLANS

F.A.P. ROUTE 525: U.S. 20 (GRANT HIGHWAY)
PAGE STREET TO LOCUST STREET
SECTION: 2021-157-RS
PROJECT: PROT-LIY0(834)
STANDARD OVERLAY, ADA IMPROVEMENT
MCHENRY COUNTY

C-91-038-22

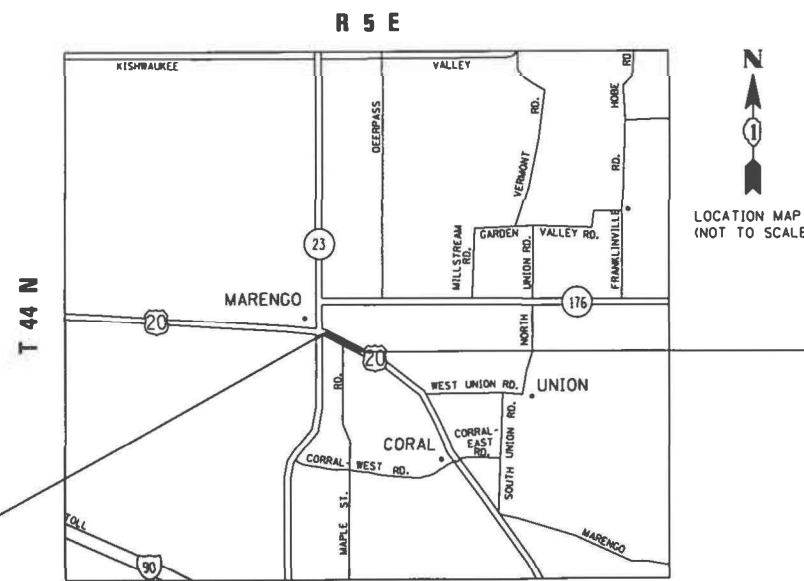


FULL SIZE PLANS HAVE BEEN PREPARED USING STANDARD ENGINEERING SCALES. REDUCED SIZED PLANS WILL NOT CONFORM TO STANDARD SCALES. IN MAKING MEASUREMENTS ON REDUCED PLANS, THE ABOVE SCALES MAY BE USED.

J.U.L.I.E.
JOINT UTILITY LOCATION INFORMATION FOR EXCAVATORS
1-800-892-0123
OR 811

PROJECT ENGINEER: VESELIN VELICHKOV (847) 705-4432
PROJECT MANAGER: FAWAD AQUEEL

CONTRACT NO. 62P74



PROJECT BEGINS:
STA. 18 + 96.06

PROJECT ENDS:
STA. 41 + 55.42

MARENGO TOWNSHIP

GROSS LENGTH = 2260 FT. = 0.43 MILE
NET LENGTH = 2260 FT. = 0.43 MILE

STATE OF ILLINOIS
DEPARTMENT OF TRANSPORTATION

SUBMITTED May 5 2022
Jose Rivero
REGIONAL ENGINEER

June 10, 2022 [Signature]
ENGINEER OF DESIGN AND ENVIRONMENT

June 10, 2022 [Signature]
DIRECTOR OF HIGHWAYS PROJECT IMPLEMENTATION

PRINTED BY THE AUTHORITY
OF THE STATE OF ILLINOIS

INDEX OF SHEETS

STATE STANDARDS

GENERAL NOTES

SHEET NO.	DESCRIPTION
1	COVER SHEET
2	INDEX OF SHEETS
3-5	SUMMARY OF QUANTITIES
6	SCHEDULE OF QUANTITIES
7	EXISTING AND PROPOSED TYPICAL SECTIONS
8-9	ROADWAY AND PAVEMENT MARKING PLAN
10-12	PROPOSED ADA CURB RAMP DESIGN
13	DETAILS FOR FRAMES AND LIDS ADJUSTMENT WITH MILLING (BD-8)
14	PAVEMENT PATCHING FOR HMA SURFACED PAVEMENT (BD-22)
15	CURB OR CURB AND GUTTER REMOVAL AND REPLACEMENT (BD-24)
16	BUTT JOINT AND HMA TAPER DETAILS (BD-32)
17	TRAFFIC CONTROL AND PROTECTION FOR SIDE ROADS, INTERSECTIONS, AND DRIVEWAYS (TC-10)
18	TYPICAL APPLICATIONS - RAISED REFLECTIVE PAVEMENT MARKERS (SNOW PLOW RESISTANT) (TC-11)
19	DISTRICT ONE TYPICAL PAVEMENT MARKINGS (TC-13)
20	SHORT TERM PAVEMENT MARKING LETTERS AND SYMBOLS (TC-16)
21	ARTERIAL ROAD INFORMATION SIGN (TC-22)
22	DRIVEWAY ENTRANCE SIGNING (TC-26)
23	PROJECT DETAIL FOR SINGLE PERPENDICULAR CURB RAMPS (PD-01)
24	PROJECT DETAIL FOR DOUBLE PERPENDICULAR CURB RAMPS (PD-03)
25	PROJECT DETAIL FOR SINGLE PERPENDICULAR CURB RAMPS WITH TURNING SPACE (PD-04)

STANDARD NO.	DESCRIPTION
000001-08	TYPICAL SYMBOLS, ABBREVIATIONS AND PATTERNS
424001-11	PERPENDICULAR CURB RAMPS FOR SIDEWALKS
424021-06	DEPRESSED CORNER FOR SIDEWALKS
442201-03	CLASS C AND D PATCHES
604001-05	FRAME AND LIDS, TYPE 1
606001-08	CONCRETE CURB TYPE B AND COMBINATION CONCRETE CURB AND GUTTER
701006-05	OFF-RD OPERATIONS, 2L, 2W 15' (4.5 m) TO 24" (600 mm) FROM PAVEMENT EDGE
701011-04	OFF-RD MOVING OPERATIONS, 2L, 2W, DAY ONLY
701301-04	LANE CLOSURE, 2L, 2W, SHORT TIME OPERATIONS
701311-03	LANE CLOSURE, 2L, 2W, MOVING OPERATIONS - DAY ONLY
701501-06	URBAN LANE CLOSURE, 2L, 2W, UNDEVIDED
701801-06	SIDEWALK, CORNER, OR CROSSWALK CLOSURE
701901-08	TRAFFIC CONTROL DEVICES
780001-05	TYPICAL PAVEMENT MARKINGS
781001-04	TYPICAL APPLICATIONS RAISED REFLECTIVE PAVEMENT MARKERS

- BEFORE STARTING ANY EXCAVATION THE CONTRACTOR SHALL CALL "J.U.L.I.E." AT 800-892-0123 OR 811 FOR FIELD LOCATIONS OF BURIED ELECTRIC, TELEPHONE AND GAS FACILITIES. (48 HOUR NOTIFICATION REQUIRED).
- THE CONTRACTOR SHALL COORDINATE CONSTRUCTION ACTIVITIES WITH UTILITY COMPANIES, AND THE CITY OF MARENGO
- THE CONTRACTOR WILL NOT BE ALLOWED TO SET UP A YARD OR FIELD OFFICE ON STATE PROPERTY WITHOUT WRITTEN PERMISSION OF THE DEPARTMENT.
- ALL DAMAGE TO EXISTING PAVEMENT MARKINGS OR RAISED REFLECTIVE PAVEMENT MARKERS OUTSIDE THE REMOVAL LINE SHOWN ON THE PLANS WILL BE REPLACED AT THE CONTRACTOR'S EXPENSE.
- BEFORE BEGINNING ANY WORK, THE CONTRACTOR SHALL RETAIN AND RECORD FOR FUTURE REFERENCE, ALL EXISTING PAVEMENT MARKING LINES (AND RAISED REFLECTIVE PAVEMENT MARKERS) IN ORDER THAT THESE LOCATIONS CAN BE RE-ESTABLISHED FOR STRIPING. EXACT LOCATIONS OF ALL PAVEMENT MARKINGS SHALL BE AS SHOWN ON THE PLANS OR AS DIRECTED BY THE ENGINEER.
- ALL PAVEMENT PATCHING, CURB AND GUTTER REMOVAL AND REPLACEMENT, SIDEWALK REMOVAL, P.C.C. SIDEWALK 5', AND DRAINAGE ADJUSTMENT LOCATIONS WILL BE DETERMINED IN THE FIELD BY THE ENGINEER.
- IT SHALL BE THE CONTRACTOR'S RESPONSIBILITY TO VERIFY ALL DIMENSIONS AND CONDITIONS EXISTING IN THE FIELD PRIOR TO CONSTRUCTION AND ORDERING OF MATERIALS.
- FRAMES AND GRATES ADJUSTMENT OF PRIVATE UTILITIES WITHIN THE LIMITS OF THE IMPROVEMENTS SHALL BE DONE BY THEIR RESPECTIVE OWNERS AND ARE NOT PART OF THIS CONTRACT.
- THE CONTRACTOR SHALL CONTACT THE DISTRICT ONE TRAFFIC CONTROL SUPERVISOR AT KALPANA.KANNAN-HOSADURGA@ILLINOIS.GOV A MINIMUM OF 72 HOURS IN ADVANCE OF BEGINNING WORK.
- THE RESIDENT ENGINEER SHALL CONTACT WALTER CZARNY , ARTERIAL TRAFFIC FIELD ENGINEER, AT WALTER.CZARNY@ILLINOIS.GOV A MINIMUM OF TWO (2) WEEKS PRIOR TO THE PLACEMENT OF PERMANENT PAVEMENT MARKINGS.
- THE CONTRACTOR WILL BE REQUIRED TO KEEP A RECORD OF THE LOCATIONS OF THE BURIED STRUCTURES ACCORDING TO THE STATION AND DISTANCE LEFT OR RIGHT OF THE CENTERLINE OF PAVEMENT. UPON COMPLETION OF THE WORK, THE CONTRACTOR WILL DELIVER THE RECORD TO THE ENGINEER.
- EXISTING BROKEN FRAMES AND LIDS SHALL BE REMOVED AND DISPOSED OF BY THE CONTRACTOR AND SHALL BE REPLACED AS DIRECTED BY THE ENGINEER. REPLACEMENT FRAMES AND LIDS WILL BE PAID FOR ACCORDING TO ARTICLE 109.04 OF THE STANDARD SPECIFICATIONS UNLESS A SEPARATE PAY ITEM HAS BEEN PROVIDED.
- DO NOT SCALE PLANS FOR CONSTRUCTION DIMENSIONS.
- DOUBLE LANE MARKERS ARE TO BE USED AS SHOWN ON THE DISTRICT ONE DETAIL "TYPICAL APPLICATIONS - RAISED REFLECTIVE PAVEMENT MARKERS (SNOW-PLOW RESISTANT)" SHOWN IN THE PLANS.
- PAVEMENT MARKING TAPE, TYPE III SHALL BE USED FOR SHORT TERM PAVEMENT MARKINGS ON ALL FINAL SURFACES.
- ANY LOOSE MATERIAL DEPOSITED IN THE FLOW LINE OF CURB OR DRAINAGE STRUCTURES, WHICH OBSTRUCTS THE NATURAL FLOW OF WATER, SHALL BE REMOVED AT THE CLOSE OF EACH WORKING DAY. PRIOR TO ACCEPTANCE OF THE IMPROVEMENT, ALL DRAINAGE STRUCTURES SHALL BE FREE OF DIRT AND DEBRIS. THIS WORK WILL NOT BE PAID FOR SEPARATELY BUT SHALL BE CONSIDERED AS INCIDENTAL.
- BUTT JOINTS WILL BE INSTALLED AT THE ENDS OF ALL RESURFACING (WHERE RESURFACING MEETS EXISTING PAVEMENT), IN ACCORDANCE WITH THE "BUTT JOINT AND HMA TAPER DETAILS" SHEET INCLUDED IN THE PLANS, UNLESS OTHERWISE SPECIFIED.
- ANY PAVEMENT MARKINGS AND RAISED REFLECTIVE PAVEMENT MARKERS OBLITERATED BY MILLING AND RESURFACING OPERATIONS ON SIDE STREETS AND ENTRANCES SHALL BE REPLACED AND PAID FOR IN KIND.
- THE CONTRACTOR SHALL BE REQUIRED TO PROVIDE ACCESS TO ABUTTING PROPERTY AT ALL TIMES DURING THE CONSTRUCTION OF THIS PROJECT.
- PROPOSED SIDEWALK RAMPS SHALL CONFORM TO CURRENT ADA REQUIREMENTS AND APPLICABLE STATE HIGHWAY STANDARDS OR AS DETERMINED BY THE ENGINEER.
- THE CONTRACTOR SHALL MAINTAIN PEDESTRIAN ACCESS AT ALL TIMES DURING CONSTRUCTION.
- THE CONTRACTOR SHALL USE CARE IN GRADING OR EXCAVATING NEAR ANY OR ALL EXISTING ITEMS THAT WILL NOT BE REMOVED INCLUDING PREVIOUSLY SEEDED AREAS. ANY DAMAGE DONE TO EXISTING ITEMS BY THE CONTRACTOR SHALL BE REPAIRED AT THE CONTRACTOR'S OWN EXPENSE TO THE SATISFACTION OF THE ENGINEER.
- ALL MILLED SURFACES SHALL BE AT A UNIFORM CROSS SLOPE PER LANE AND FREE OF RIDGES BETWEEN PASSES. ANY DEVIATIONS SHALL BE CORRECTED AT NO COST TO THE DEPARTMENT

MODEL: Default
 FILE NAME: p:\uldest-pw-bentley.com\PI\DOT\Documents\DOT Office\Dir\rdet_1\Project\104322\CADD\DATA\Design\104322-ah-agenencs.dgn

USER NAME = mesado	DESIGNED -	REVISED -
	DRAWN -	REVISED -
PLOT SCALE = 100,0000 ' / in.	CHECKED -	REVISED -
PLOT DATE = 4/29/2022	DATE -	REVISED -

STATE OF ILLINOIS
DEPARTMENT OF TRANSPORTATION

INDEX OF SHEETS, STATE STANDARDS AND GENERAL NOTES
U.S. 20 - PAGE ST. TO LOCUST ST.

SCALE: SHEET OF SHEETS STA. TO STA.

F.A.P. RTE.	SECTION	COUNTY	TOTAL SHEETS	SHEET NO.
525	2021-157-R5	MCHENRY	25	2
				CONTRACT NO. 62P74
		ILLINOIS	FED. AID PROJECT	

SUMMARY OF QUANTITIES			CONSTRUCTION TYPE CODE						
CODE NO	ITEM	UNIT	TOTAL QUANTITIES URBAN	0005 80% FED 20% STATE	0005 100% STATE				
20200100	EARTH EXCAVATION	CU YD	22	22					
21101615	TOPSOIL FURNISH AND PLACE, 4"	SO YD	146	146					
25200110	SODDING, SALT TOLERANT	SO YD	146	146					
25200200	SUPPLEMENTAL WATERING	UNIT	2	2					
40600290	BITUMINOUS MATERIALS (TACK COAT)	POUND	4857	4857					
40600370	LONGITUDINAL JOINT SEALANT	FOOT	2260	2260					
40600400	MIXTURE FOR CRACKS, JOINTS, AND FLANGEWAYS	TON	11	11					
40600982	HOT-MIX ASPHALT SURFACE REMOVAL - BUTT JOINT	SO YD	124	124					
40601005	HOT-MIX ASPHALT REPLACEMENT OVER PATCHES	TON	202	202					
40603200	POLYMERIZED HOT-MIX ASPHALT BINDER COURSE, IL-4.75, N50	TON	297	297					
40604062	HOT-MIX ASPHALT SURFACE COURSE, IL-9.5, MIX "D", N70	TON	605	605					
42001300	PROTECTIVE COAT	SO YD	358	358					

SUMMARY OF QUANTITIES			CONSTRUCTION TYPE CODE						
CODE NO	ITEM	UNIT	TOTAL QUANTITIES URBAN	0005 80% FED 20% STATE	0005 100% STATE				
42400200	PORTLAND CEMENT CONCRETE SIDEWALK 5 INCH	SO FT	2183	2183					
42400800	DETECTABLE WARNINGS	SO FT	180	180					
44000158	HOT-MIX ASPHALT SURFACE REMOVAL, 2 1/4"	SO YD	7195	7195					
44000600	SIDEWALK REMOVAL	SO FT	2183	2183					
44002212	HOT-MIX ASPHALT REMOVAL OVER PATCHES, 3"	SO YD	1200	1200					
44201777	CLASS D PATCHES, TYPE II, 11 INCH	SO YD	380	380					
44201781	CLASS D PATCHES, TYPE III, 11 INCH	SO YD	320	320					
44201783	CLASS D PATCHES, TYPE IV, 11 INCH	SO YD	500	500					
60257900	MANHOLES TO BE RECONSTRUCTED	EACH	2	2					
60266600	VALVE BOXES TO BE ADJUSTED	EACH	7	7					
60300305	FRAMES AND LIDS TO BE ADJUSTED	EACH	5	5					
60406100	FRAMES AND LIDS, TYPE 1, CLOSED LID	EACH	1	1					
* 66900200	NON-SPECIAL WASTE DISPOSAL	CU YD	22	22					
* 66900530	SOIL DISPOSAL ANALYSIS	EACH	3	3					

* = SPECIALTY ITEMS
 △ = NON-PARTICIPATING WORK (100% STATE)

FILE NAME =	USER NAME = mesado	DESIGNED -	REVISED -
pw\N\dot-pw.bentley.com\PI\DOT\Documents\UDOT		DRAWN -	REVISED -
Office\District\Projects\0104222\CADD\Design\0104222-st-300		CHECKED -	REVISED -
		DATE -	REVISED -

**STATE OF ILLINOIS
DEPARTMENT OF TRANSPORTATION**

SUMMARY OF QUANTITIES U.S. 20 - PAGE ST. TO LOCUST ST.			
SCALE:	SHEET NO.	OF SHEETS	STA. TO STA.

F.A.P. RTE.	SECTION	COUNTY	TOTAL SHEETS	SHEET NO.
525	2021-157-R5	MCHENRY	25	3
CONTRACT NO. 62P74				
FED. ROAD DIST. NO. 1 ILLINOIS FED. AID PROJECT				

SUMMARY OF QUANTITIES			TOTAL QUANTITIES URBAN	CONSTRUCTION TYPE CODE				
CODE NO	ITEM	UNIT		0005 80% FED 20% STATE	0005 100% STATE			
* 66901001	REGULATED SUBSTANCES PRE-CONSTRUCTION	LSUM	1	1				
	PLAN							
* 66901003	REGULATED SUBSTANCES FINAL CONSTRUCTION	LSUM	1	1				
	REPORT							
* 66901006	REGULATED SUBSTANCES MONITORING	CAL DA	6	6				
67100100	MOBILIZATION	L SUM	1	1				
70102620	TRAFFIC CONTROL AND PROTECTION, STANDARD 701501	L SUM	1	1				
70102640	TRAFFIC CONTROL AND PROTECTION, STANDARD 701801	L SUM	1	1				
70300100	SHORT TERM PAVEMENT MARKING	FOOT	3676	3676				
70300150	SHORT TERM PAVEMENT MARKING REMOVAL	SO FT	2689	2689				
70300211	TEMPORARY PAVEMENT MARKING LETTERS AND SYMBOLS - PAINT	SO FT	37	37				
70300221	TEMPORARY PAVEMENT MARKING - LINE 4"- PAINT	FOOT	553	553				
70300241	TEMPORARY PAVEMENT MARKING - LINE 6"- PAINT	FOOT	291	291				

SUMMARY OF QUANTITIES			TOTAL QUANTITIES URBAN	CONSTRUCTION TYPE CODE				
CODE NO	ITEM	UNIT		0005 80% FED 20% STATE	0005 100% STATE			
70300261	TEMPORARY PAVEMENT MARKING - LINE 12"- PAINT	FOOT	246	246				
70306120	TEMPORARY PAVEMENT MARKING - LINE 4" - TYPE III TAPE	FOOT	200	200				
* 78000100	THERMOPLASTIC PAVEMENT MARKING - LETTERS AND SYMBOLS	SO FT	37	37				
* 78000200	THERMOPLASTIC PAVEMENT MARKING - LINE 4"	FOOT	553	553				
* 78000400	THERMOPLASTIC PAVEMENT MARKING - LINE 6"	FOOT	291	291				
* 78000600	THERMOPLASTIC PAVEMENT MARKING - LINE 12"	FOOT	246	246				
* 78100100	RAISED REFLECTIVE PAVEMENT MARKER	EACH	58	58				
78300200	RAISED REFLECTIVE PAVEMENT MARKER REMOVAL	EACH	30	30				
78300202	PAVEMENT MARKING REMOVAL - WATER BLASTING	SO FT	575	575				
* X0320050	CONSTRUCTION LAYOUT (SPECIAL)	L SUM	1	1				
X4400501	COMBINATION CURB AND GUTTER REMOVAL AND REPLACEMENT LESS THAN OR EQUAL TO 10 FEET	FOOT	31	31				

* = SPECIALTY ITEMS
 △ = NON-PARTICIPATING WORK (100% STATE)

FILE NAME =	USER NAME = mesado	DESIGNED -	REVISED -
pw\N\dot-pw\benley.com\PI\DOT\Documents\DOT - Office\District\Projects\DI04222\CADD\in\Des\gn\DI04222-st-300.DRAWN			REVISED -
	PLOT SCALE = 100,0000' / 1in	CHECKED -	REVISED -
	PLOT DATE = 4/29/2022	DATE -	REVISED -

**STATE OF ILLINOIS
DEPARTMENT OF TRANSPORTATION**

**SUMMARY OF QUANTITIES
U.S. 20 - PAGE ST. TO LOCUST ST.**

F.A.P. RTE.	SECTION	COUNTY	TOTAL SHEETS	SHEET NO.
525	2021-157-RS	MCHENRY	25	4
FED. ROAD DIST. NO. 1 ILLINOIS FED. AID PROJECT			CONTRACT NO. 62P74	

SCALE: SHEET NO. OF SHEETS STA. TO STA.

INTERSECTION	20200100	21101615	25200110	25200200	42001300	42400200	44000600	56400400	60266600	60300305	X4400501	Z0004562
	EARTH EXCAVATION	TOPSOIL F&P	SODDING SALT TOLERANT	SUPPLE WATERING	PROTECTIVE COAT	PC CONC SIDEWALK 5	SIDEWALK REM	DETECTABLE WARNINGS	VALVE BOXES TO BE ADJUSTED	FRAMES AND LIDS TO BE ADJUSTED	COMB C&G R&R <=10 FT	COMB C&G B-6.12
	CU YD	SQ YD	SQ YD	UNIT	SQ YD	SQ FT	SQ FT	SQ FT	EACH	EACH	FOOT	FOOT
U.S. 20 @ NW Clark St	2.45	16.33	16.33	0.25	33.74	245.00	245.00	20.00		1.00		22.00
U.S. 20 @ NE Clark St	1.00	6.67	6.67	0.10	12.59	100.00	100.00	10.00			5.00	
U.S. 20 @ SW Elm St	2.45	16.33	16.33	0.25	34.93	245.00	245.00	20.00				26.00
U.S. 20 @ SE Elm St	2.10	14.00	14.00	0.21	24.82	210.00	210.00	10.00			5.00	
U.S. 20 @ NW East St.	1.00	6.67	6.67	0.10	12.59	100.00	100.00	10.00			5.00	
U.S. 20 @ NE East St.	1.00	6.67	6.67	0.10	12.59	100.00	100.00	10.00			5.00	
U.S. 20 @ SW Maple St.	1.00	6.67	6.67	0.10	12.59	100.00	100.00	10.00			5.00	
U.S. 20 @ SE Maple St.	1.31	8.72	8.72	0.13	16.16	130.74	130.74	11.00	1.00		5.50	
U.S. 20 @ NW Locust St.	2.33	15.56	15.56	0.23	35.86	233.41	233.41	22.00				33.50
U.S. 20 @ SW Locust St.	2.45	16.33	16.33	0.25	34.33	245.00	245.00	20.00				24.00
U.S. 20 @ SE Locust St.	2.28	15.23	15.23	0.23	33.53	228.41	228.41	17.00				27.50
U.S. 20 @ NE Locust St.	2.45	16.33	16.33	0.25	34.93	245.00	245.00	20.00				26.00
Total	21.8	145.5	145.5	2.2	298.7	2182.6	2182.6	180.0	1.0	1.0	30.5	159.0

MODEL: Default
 FILE: \\mfrs-pw-bentley.com\PW\DOT\Documents\DOT Office\Dir\rdt_1\Project\104322\CADD\DATA\Design\104322-ah-schedule.dgn

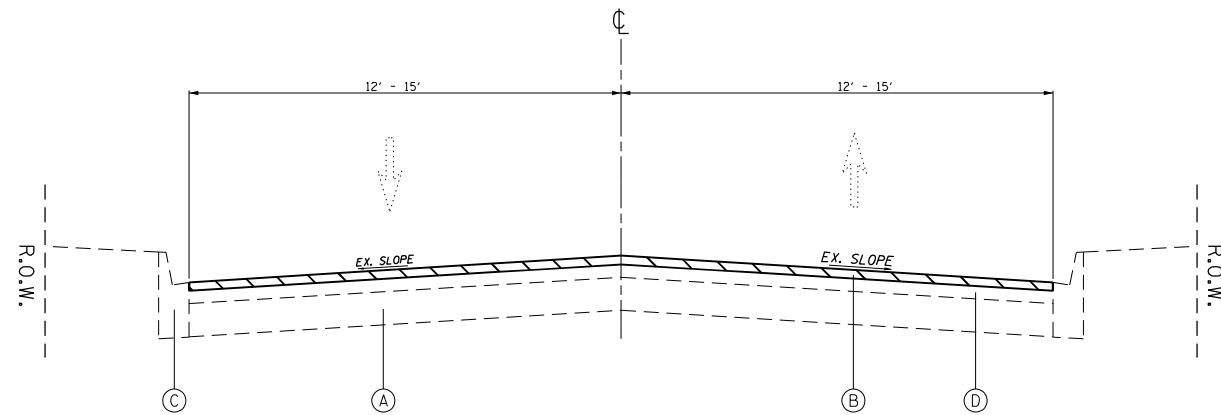
USER NAME = mesado	DESIGNED -	REVISED -
	DRAWN -	REVISED -
PLOT SCALE = 100,0000 ' / in.	CHECKED -	REVISED -
PLOT DATE = 4/29/2022	DATE -	REVISED -

STATE OF ILLINOIS
DEPARTMENT OF TRANSPORTATION

SCHEDULE OF QUANTITIES
U.S. 20 - PAGE ST. TO LOCUST ST.

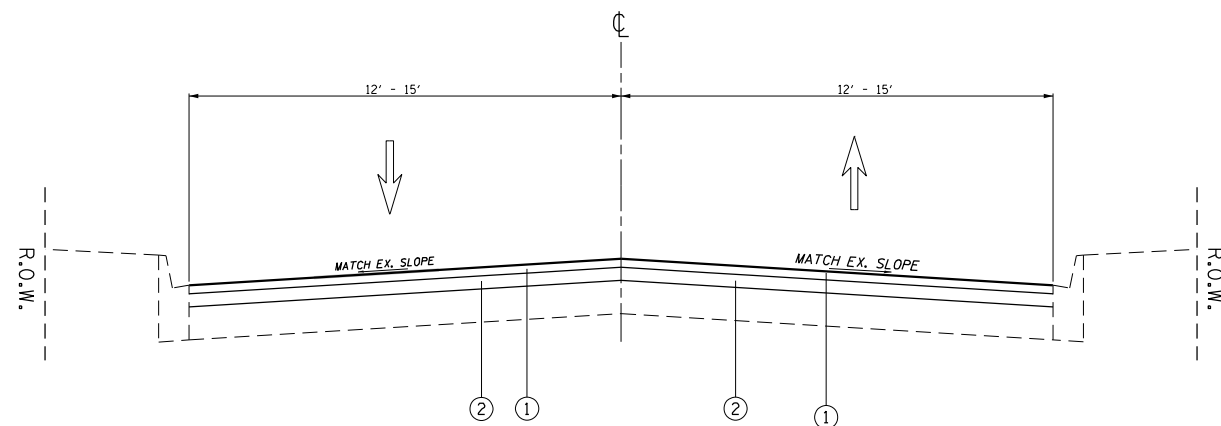
SCALE: SHEET OF SHEETS STA. TO STA.

F.A.P. RTE.	SECTION	COUNTY	TOTAL SHEETS	SHEET NO.
525	2021-157-R5	MCHENRY	25	6
CONTRACT NO. 62P74			ILLINOIS FED. AID PROJECT	



EXISTING TYPICAL SECTION

STA. 18+96.06 TO STA. 41+55.42



PROPOSED TYPICAL SECTION

STA. 18+96.06 TO STA. 41+55.42

LEGEND - EXISTING:

- (A) CONCRETE PAVEMENT ±9"
- (B) HOT MIX ASPHALT SURFACE REMOVAL 2.5"
- (C) COMBINATION CURB & GUTTER, TYPE B-6.12
- (D) HOT MIX ASPHALT SURFACE 3"±

LEGEND - PROPOSED

- (1) HOT-MIX ASPHALT SURFACE COURSE, MIX "D", IL-9.5, N70 1 1/2"
- (2) POLYMERIZED HOT-MIX ASPHALT BINDER COURSE, IL-4.75, N50 3/4"

HOT-MIX ASPHALT MIXTURE REQUIREMENTS		QUALITY MANAGEMENT PROGRAM (QMP)
MIXTURE TYPE	AIR VOIDS @ Ndes	
PAVEMENT RESURFACING		
HOT-MIX ASPHALT SURFACE COURSE, MIX "D", IL-9.5, N70 1 1/2 "	4% AT 70 GYR.	QC/OA
POLYMERIZED HOT-MIX ASPHALT BINDER COURSE, IL-4.75, N50, 3/4 "	3.5% AT 50 GYR.	QC/OA
PATCHING		
CLASS D PATCHES (HMA BINDER IL-19 mm)	4% AT 70 GYR.	QC/OA
HMA REPLACEMENT OVER PATCHES (HMA BINDER IL-19 mm)	4% AT 70 GYR.	QC/OA
QMP DESIGNATION: QUALITY CONTROL/QUALITY ASSURANCE (QC/OA); QUALITY CONTROL FOR PERFORMANCE (QCP); PAY FOR PERFORMANCE (PFP)		

- NOTE 1: THE UNIT WEIGHT USED TO CALCULATE ALL HMA SURFACE MIXTURE QUANTITIES IS 112 LBS/SQ YD/IN.
- NOTE 2: THE "AC TYPE" FOR POLYMERIZED HMA MIXES SHALL BE "SBS/SBR PG 76-22" AND FOR NON-POLYMERIZED HMA THE "AC TYPE" SHALL BE "PG 64-22" UNLESS MODIFIED BY RECLAIMED MATERIALS SPECIAL PROVISIONS.
- NOTE 3: THE CONTRACTOR SHALL DO PAVEMENT PATCHING PER BD-22 DETAIL FIRST, THEN MILL THE ROADWAY.
- NOTE 4: THE LONGITUDINAL JOINT SEALANT SHALL BE PLACED OVER THE POLY HMA BC IL-4.75 N50.

MODEL: Default
 FILE: \\mamep\pub\uldrct-pw-bead\paw.com\PIV\DOT\Documents\DOT Office\Dir\drct_1\Project\104222\CaddData\Design\104222-ah-zyp\pic1.dgn

USER NAME = mesado	DESIGNED -	REVISED -
PLOT SCALE = 100,0000 ' / in.	DRAWN -	REVISED -
PLOT DATE = 4/29/2022	CHECKED -	REVISED -
	DATE -	REVISED -

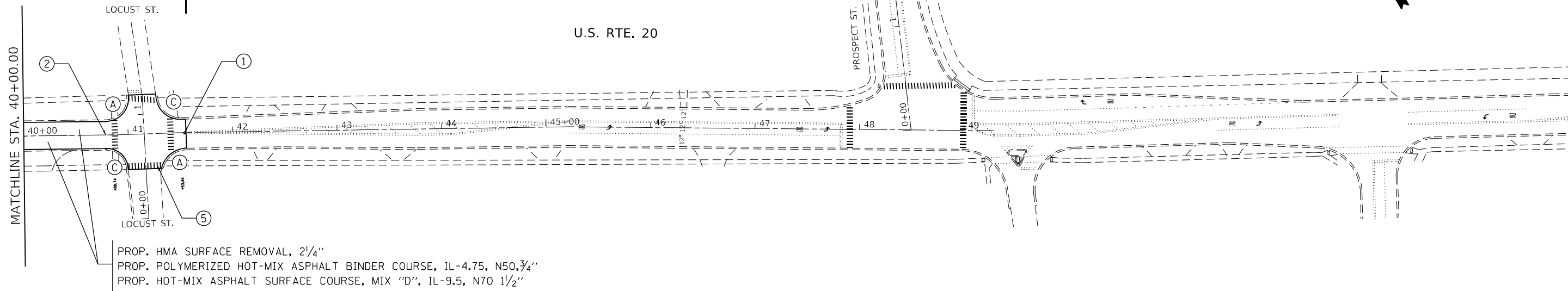
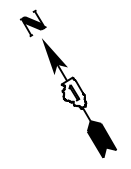
STATE OF ILLINOIS
DEPARTMENT OF TRANSPORTATION

EXISTING AND PROPOSED TYPICAL SECTIONS
U.S. 20 - PAGE ST. TO LOCUST ST.

SCALE: SHEET 1 OF 4 SHEETS STA. TO STA.

F.A.P. RTE.	SECTION	COUNTY	TOTAL SHEETS	SHEET NO.
525	2021-157-R5	MCHENRY	25	7
ILLINOIS FED. AID PROJECT			CONTRACT NO. 62P74	

**PROJECT ENDS
STA. 41 + 55.42**



PROP. HMA SURFACE REMOVAL, 2 1/4"
 PROP. POLYMERIZED HOT-MIX ASPHALT BINDER COURSE, IL-4.75, N50, 3/4"
 PROP. HOT-MIX ASPHALT SURFACE COURSE, MIX "D", IL-9.5, N70 1 1/2"

PAVEMENT MARKING LEGEND:

① 4" DOUBLE SOLID YELLOW LINE, 2 @ 11" C-C (TYP.)	④ 6" SKIP-DASH WHITE LINE, 2' DASH - 6' SKIP (TYP.)
② 4" SKIP-DASH YELLOW LINE, 10' DASH - 30' SKIP (TYP.)	⑤ 12" SOLID WHITE CROSSWALK LINE (TYP.)
③ 6" SOLID WHITE TURN LANE LINE (TYP.)	

ROADWAY LEGEND:

Ⓐ PROPOSED PEDESTRIAN RAMP IMPROVEMENT ADA DETAILS	Ⓒ PROPOSED PEDESTRIAN RAMP IMPROVEMENT SEE PD-03A
Ⓑ PROPOSED PEDESTRIAN RAMP IMPROVEMENT SEE PD-01A	Ⓓ PROPOSED PEDESTRIAN RAMP IMPROVEMENT SEE PD-04A

MODEL: Default
 FILE: Mainfile.pxl
 SUBJECT: new_benefit.com
 PLOT DATE: 4/29/2022
 PROJECT: I:\Projects\DOT\Documents\DOT Office\District 11\Project\1104322\CADD\data\Design\1104322-ah-11a.dwg

USER NAME = mesado	DESIGNED -	REVISED -
PLOT SCALE = 100,0000' / in.	DRAWN -	REVISED -
PLOT DATE = 4/29/2022	CHECKED -	REVISED -
	DATE -	REVISED -

**STATE OF ILLINOIS
DEPARTMENT OF TRANSPORTATION**

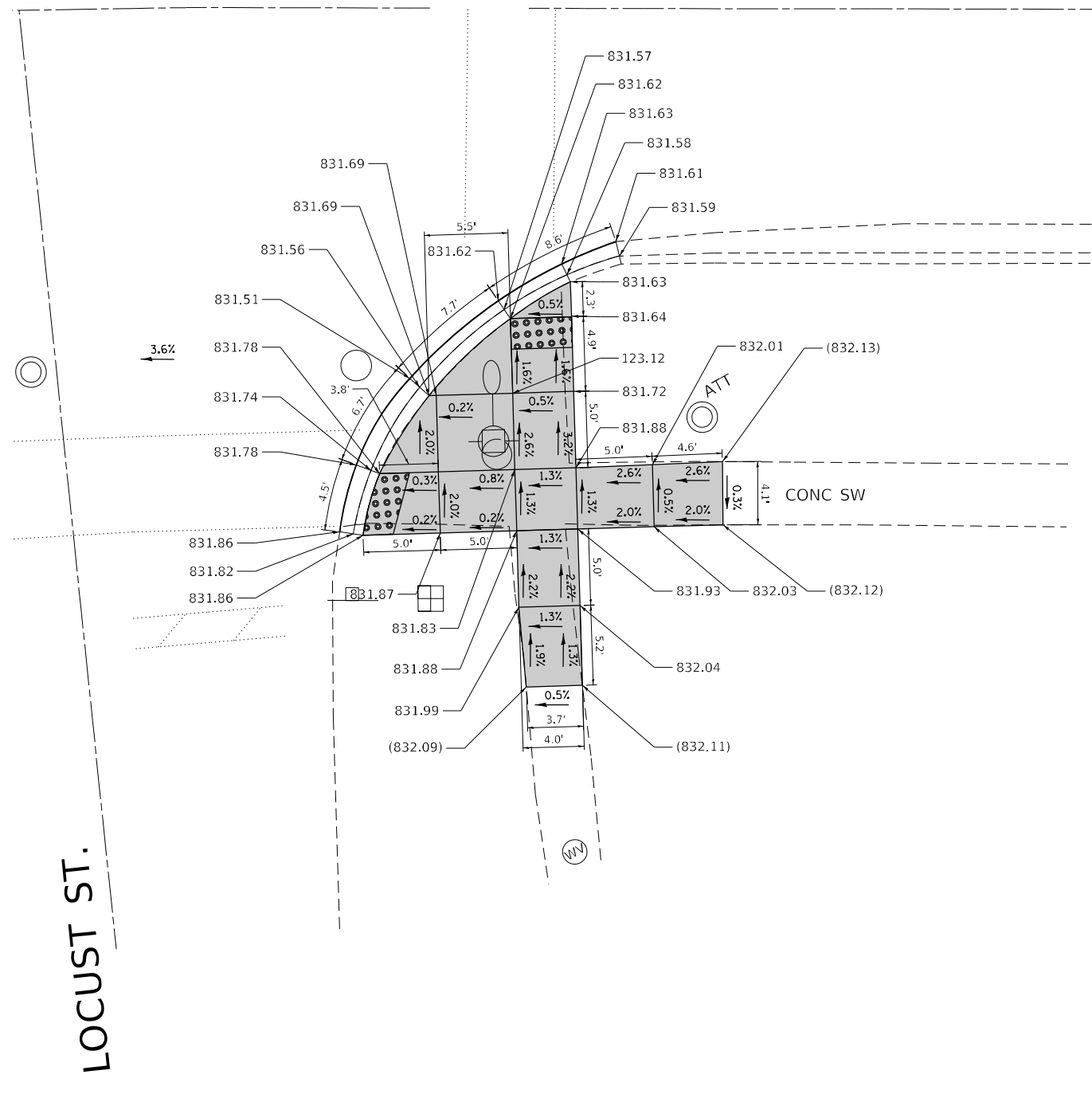
**ROADWAY PLAN AND PAVEMENT MARKING
U.S. 20 - PAGE ST. TO LOCUST ST.**

SCALE: 1"=50' SHEET 2 OF 2 SHEETS STA. 40+00.00 TO STA. 49+28.44

F.A.P. RTE.	SECTION	COUNTY	TOTAL SHEETS	SHEET NO.
525	2021-157-R5	MCHENRY	25	9
CONTRACT NO. 62P74				
ILLINOIS FED. AID PROJECT				



U.S. ROUTE 20



LOCUST ST.

REFERENCE BENCHMARK ELEV 832.90
 BENCHMARK : NORTH WEST BOLT OF FIRE HYDRANT
 LOCATION : NORTH WEST CORNER OF U.S. 20 AND LOCUST ST.

LEGEND	
xx.xx'	EXISTING LENGTH
====	PROPOSED SIDE CURB
()	EXISTING ELEVATION/SLOPE
■	PROPOSED SIDEWALK
●●●●	DETECTABLE WARNINGS
⊗	SIDEWALK REMOVAL REPLACE W/TOPSOIL & SOD

REFERENCE BENCHMARK ELEV 832.90
 BENCHMARK : NORTH WEST BOLT OF FIRE HYDRANT
 LOCATION : NORTH WEST CORNER OF U.S. 20 AND LOCUST ST.

MODEL: Default
 FILE: \\mame-pc\public\paw-bee\paw.com\PIV\DOT\Documents\DOT Office\District 1\Project\104322\CADD\Drawings\104322-ahr-details.dgn

USER NAME = mesado	DESIGNED -	REVISED -
	DRAWN -	REVISED -
PLOT SCALE = 10,0000 * / in.	CHECKED -	REVISED -
PLOT DATE = 4/29/2022	DATE -	REVISED -

STATE OF ILLINOIS
DEPARTMENT OF TRANSPORTATION

ADA CURB RAMP DETAILS
U.S. 20 - PAGE ST. TO LOCUST ST.

SCALE: SHEET OF SHEETS STA. TO STA.

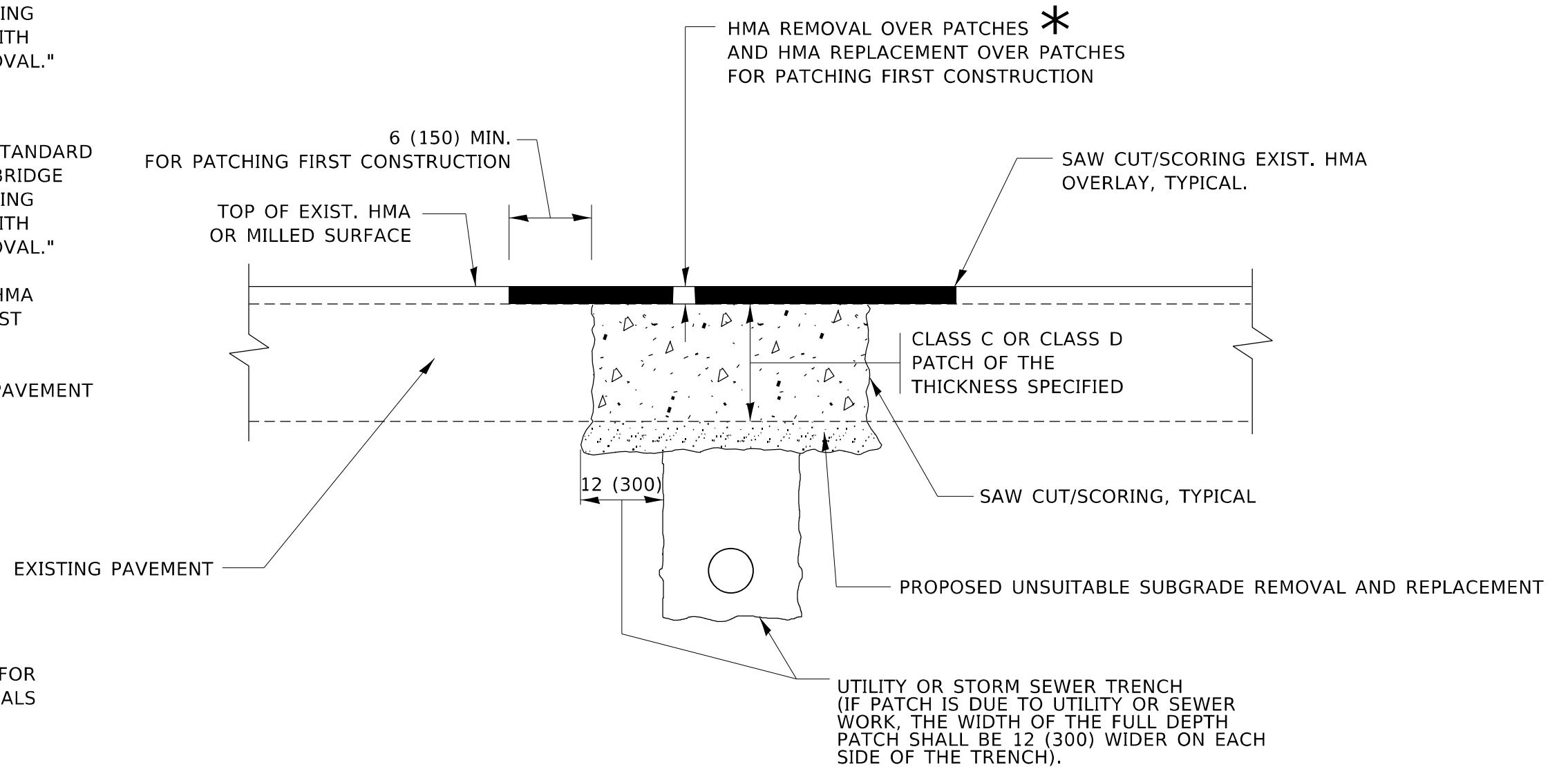
F.A.P. RTE. 525	SECTION 2021-157-RS	COUNTY MCHENRY	TOTAL SHEETS 25	SHEET NO. 12
ILLINOIS FED. AID PROJECT			CONTRACT NO. 62P74	

METHOD OF MEASUREMENT

REFER TO SECTION 442 OF THE STANDARD SPECIFICATIONS FOR ROAD AND BRIDGE CONSTRUCTION AND THE RECURRING SPECIAL PROVISION "PATCHING WITH HOT-MIX ASPHALT OVERLAY REMOVAL."

BASIS OF PAYMENT

1. REFER TO SECTION 442 OF THE STANDARD SPECIFICATIONS FOR ROAD AND BRIDGE CONSTRUCTION AND THE RECURRING SPECIAL PROVISION "PATCHING WITH HOT-MIX ASPHALT OVERLAY REMOVAL."
2. SAW CUT/SCORING OF EXISTING HMA OVERLAY IS INCLUDED IN THE COST OF PAVEMENT PATCHING.
3. SAW CUT/SCORING OF EXISTING PAVEMENT IS INCLUDED IN THE COST OF PAVEMENT PATCHING.



* SEE TYPICAL SECTIONS FOR THICKNESS AND MATERIALS

SEQUENCE OF CONSTRUCTION (PATCHING FIRST)

1. REMOVE THE EXISTING HMA MATERIAL OVER THE AREA TO BE PATCHED.
2. REMOVE AND REPLACE WITH CLASS C OR D PATCH.
3. REPLACE HMA MATERIAL OVER THE AREA TO BE PATCHED.

SEQUENCE OF CONSTRUCTION (MILLING FIRST)

1. MILL HMA FIRST IF THERE IS AT LEAST 4½ INCHES OR MORE OF HMA MATERIAL ON TOP OF THE EXISTING PAVEMENT OR IF THE PAVEMENT IS FULL DEPTH HMA. A MINIMUM OF 2 INCHES OF HMA MATERIAL SHALL BE IN PLACE AFTER MILLING.
2. REMOVE AND REPLACE WITH FULL DEPTH CLASS D PATCHES TO TOP OF MILLED SURFACE.

ALL DIMENSIONS ARE IN INCHES (MILLIMETERS) UNLESS OTHERWISE SHOWN.

MODEL: Default
FILE: hma15.pxd
Project: I:\Projects\104322\CADD\Drawings\104322-015151.dgn

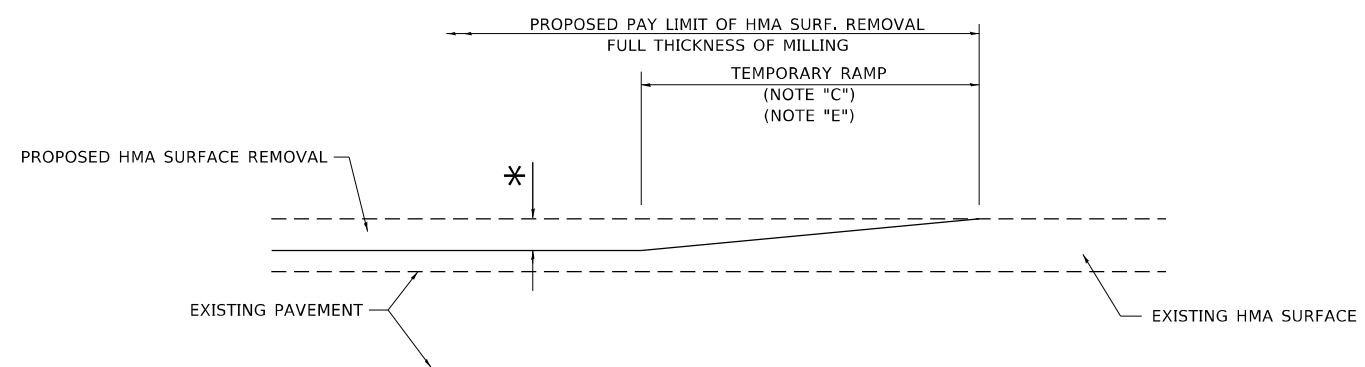
USER NAME = mesado	DESIGNED - R. SHAH	REVISED - R. BORO 01-01-07
	DRAWN -	REVISED - R. BORO 09-04-07
PLOT SCALE = 100,0000 ' / in.	CHECKED -	REVISED - K. ENG 10-27-08
PLOT DATE = 4/29/2022	DATE - 10-25-94	REVISED - K. SMITH 02-01-22

**STATE OF ILLINOIS
DEPARTMENT OF TRANSPORTATION**

**PAVEMENT PATCHING FOR
HMA SURFACED PAVEMENT**

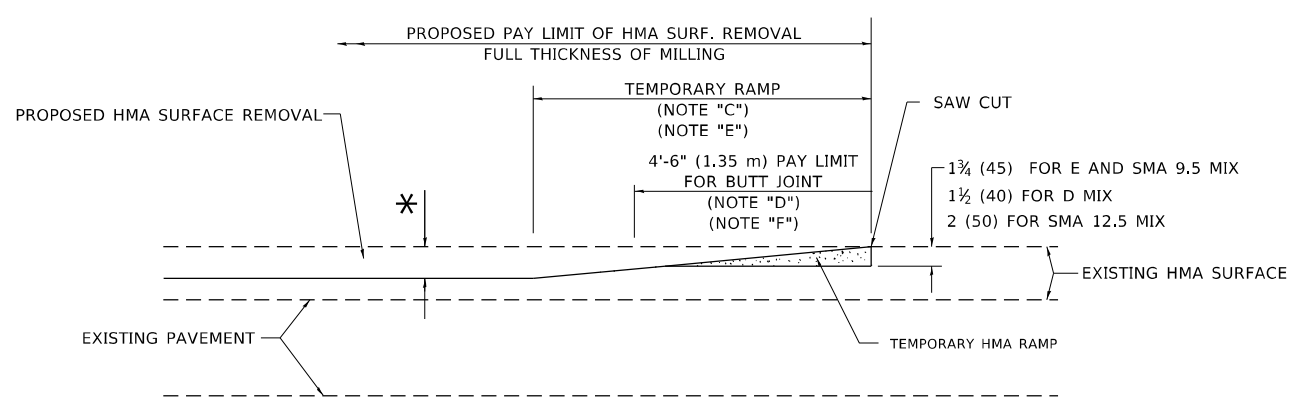
SCALE: NONE SHEET 1 OF 1 SHEETS STA. TO STA.

F.A.P. RTE.	SECTION	COUNTY	TOTAL SHEETS	SHEET NO.
525	2021-157-R5	MCHENRY	25	14
BD400-04 (BD-22)			CONTRACT NO. 62P74	
ILLINOIS FED. AID PROJECT				



MILLED TEMPORARY RAMP
(FOR BUTT JOINT AND HMA TAPER SEE DETAIL BELOW)

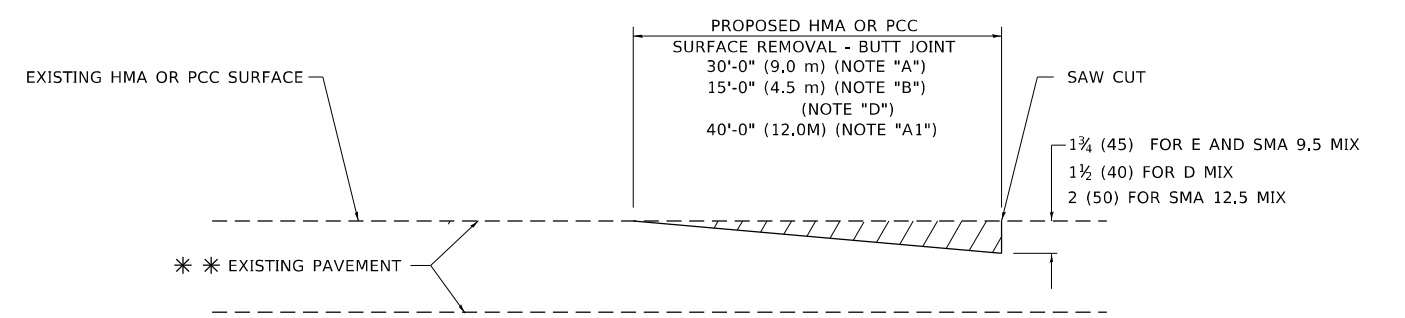
OPTION 1



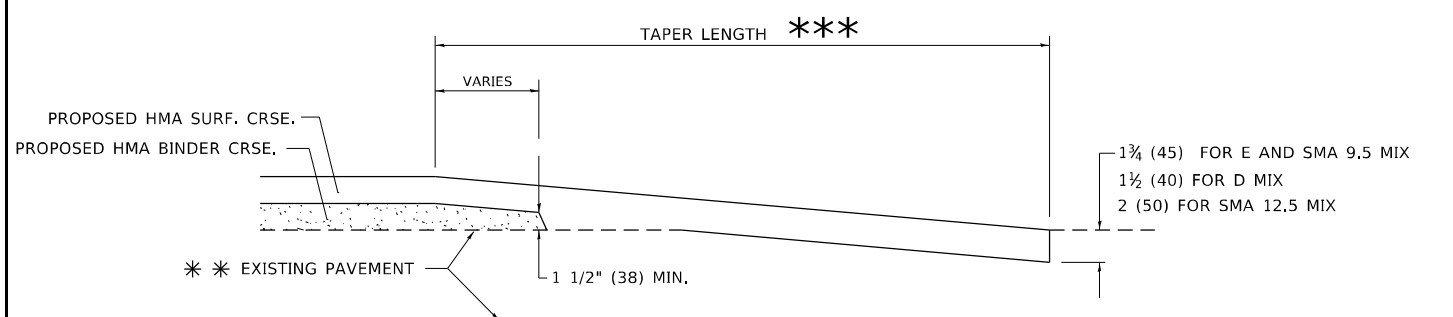
HMA CONSTRUCTED TEMPORARY RAMP
(FOR BUTT JOINT AND HMA TAPER SEE DETAIL BELOW)

OPTION 2

TYPICAL TEMPORARY RAMP



BUTT JOINT DETAIL



HMA TAPER DETAIL

TYPICAL BUTT JOINT AND HMA TAPER FOR RESURFACING ONLY

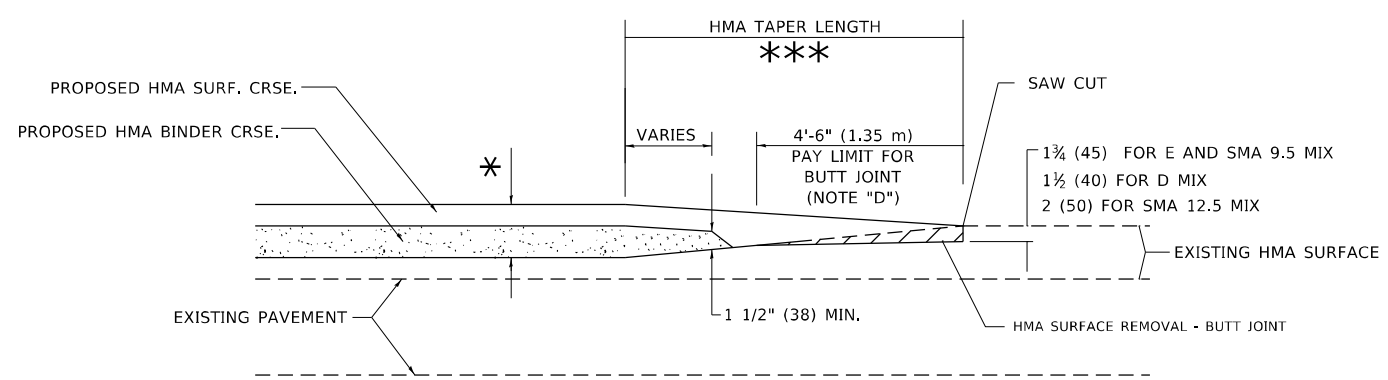
*** PC CONCRETE, HMA OR HMA RESURFACED PAVEMENT.

GENERAL NOTES

- A. MAINLINE ARTERIAL ROADWAYS AND MAJOR SIDE ROADS.
- A1. INTERSTATES
- B. MINOR SIDE ROADS.
- C. THE TEMP. RAMP SHALL BE CONSTRUCTED IMMEDIATELY UPON REMOVAL OF THE EXISTING HMA SURFACE.
- D. THE BUTT JOINT SHALL BE CONSTRUCTED IMMEDIATELY PRIOR TO PLACING THE PROPOSED HMA COURSES.
- E. TAPER THE TEMP. RAMP AT A RATE OF 3' - 4" (1.02m) PER 1 INCH (25 mm) OF MILLING THICKNESS.
* SEE TYPICAL SECTIONS FOR MILLING THICKNESS.
- F. SEE ARTICLE 406.08 AND 406.14 OF THE STANDARD SPECIFICATIONS FOR "HMA AND/OR PCC SURFACE REMOVAL, BUTT JOINT".
*** 20'-0" (6.1 m) PER 1 (25) RESURFACING (NOTE "A")
10'-0" (3.0 m) PER 1 (25) RESURFACING (NOTE "B")

BASIS OF PAYMENT

- 1. THE BUTT JOINT WILL BE PAID FOR AT THE CONTRACT UNIT PRICE PER SQUARE YARD (SQUARE METER) FOR "HOT-MIX ASPHALT SURFACE REMOVAL - BUTT JOINT" OR FOR "PORTLAND CEMENT CONCRETE SURFACE REMOVAL- BUTT JOINT".
- 2. THE TEMPORARY RAMP AND SAW CUT SHALL BE INCLUDED IN THE UNIT COST FOR HMA OR PCC SURFACE REMOVAL-BUTT JOINT.



BUTT JOINT AND HMA TAPER

TYPICAL BUTT JOINT AND HMA TAPER FOR MILLING AND RESURFACING

ALL DIMENSIONS ARE IN INCHES (MILLIMETERS) UNLESS OTHERWISE SHOWN.

MODEL: Default
FILE: hma15e.pwd
PROJECT: \\dot\Documents\DOT Office\Dir\rdt_1\Project\104222\Cadd\Drawn\104222-015\F56.dgn

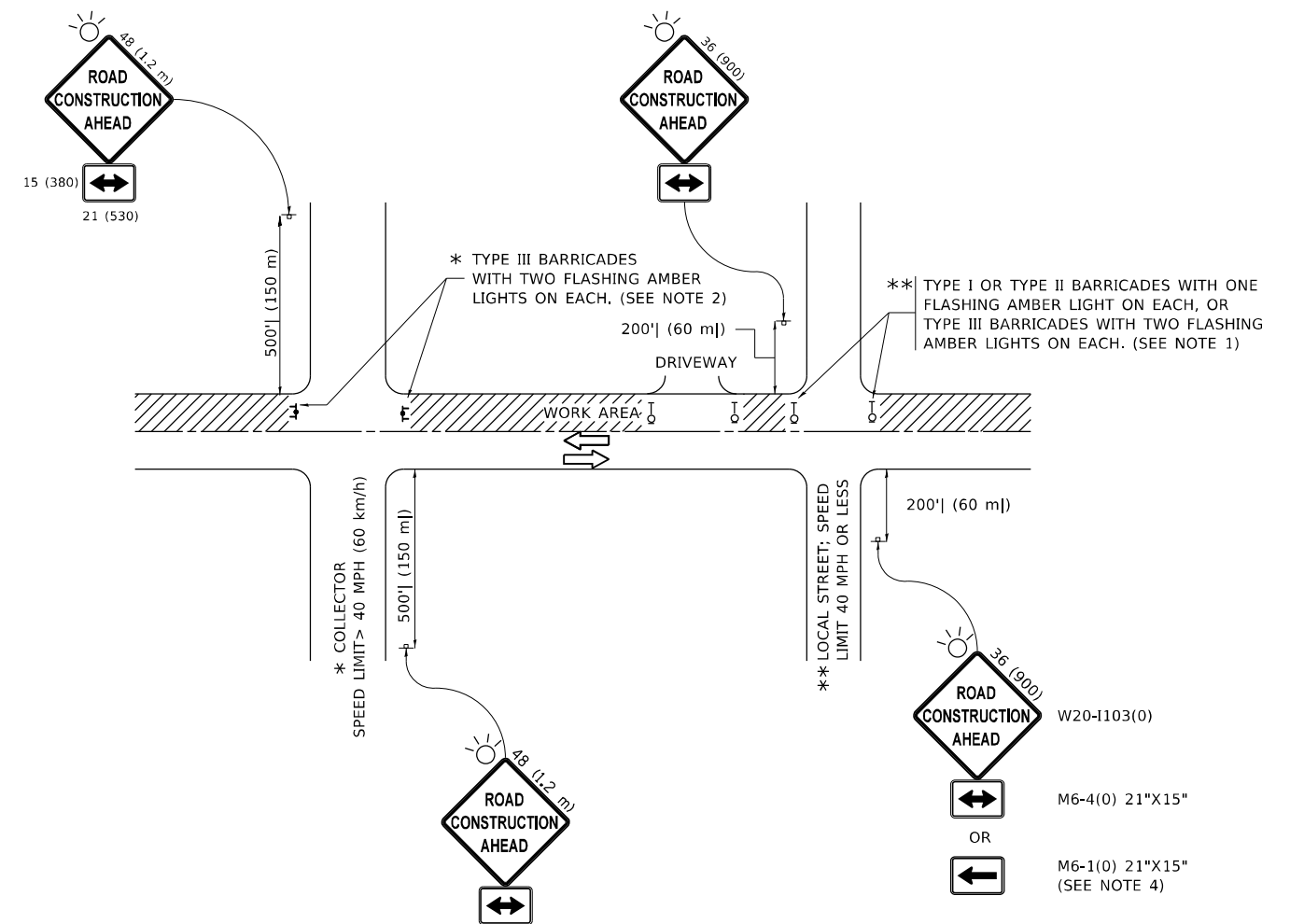
USER NAME = mesado	DESIGNED - M. DE YONG	REVISED - A. ABBAS 03-21-97
PLOT SCALE = 100,0000' / in.	CHECKED -	REVISED - M. GOMEZ 04-06-01
PLOT DATE = 4/29/2022	DATE - 06-13-90	REVISED - R. BORO 01-01-07
		REVISED - K. SMITH 02-01-22

**STATE OF ILLINOIS
DEPARTMENT OF TRANSPORTATION**

**BUTT JOINT AND
HMA TAPER DETAILS**

SCALE: NONE SHEET 1 OF 1 SHEETS STA. TO STA.

F.A.P. RTE.	SECTION	COUNTY	TOTAL SHEETS	SHEET NO.
525	2021-157-R5	MCHENRY	25	16
BD400-05 BD-32			CONTRACT NO. 62P74	
ILLINOIS FED. AID PROJECT				



NOTES:

- SIDE ROAD WITH A SPEED LIMIT OF 40 MPH (60 km/h) OR LESS AS SHOWN ON THE DRAWING AND AS DIRECTED BY THE ENGINEER:
 - ONE "ROAD CONSTRUCTION AHEAD" SIGN 36 x 36 (900x900) WITH A FLASHER MOUNTED ON IT APPROXIMATELY 200' (60 m) IN ADVANCE OF THE MAIN ROUTE.
 - THE CLOSED PORTION OF THE MAIN ROUTE SHALL BE PROTECTED BY BLOCKING WITH TYPE I, TYPE II OR TYPE III BARRICADES, 1/3 OF THE CROSS SECTION OF THE CLOSED PORTION.
- SIDE ROAD WITH A SPEED LIMIT GREATER THAN 40 MPH (60 km/h) AS SHOWN ON THE DRAWING AND AS DIRECTED BY THE ENGINEER:
 - ONE "ROAD CONSTRUCTION AHEAD" SIGN 48 x 48 (1.2 m x 1.2 m) WITH A FLASHER MOUNTED ON IT APPROXIMATELY 500' (150 m) IN ADVANCE OF THE MAIN ROUTE.
 - THE CLOSED PORTION OF THE MAIN ROUTE SHALL BE PROTECTED BY BLOCKING WITH TYPE III BARRICADES, 1/2 OF THE CROSS SECTION OF THE CLOSED PORTION.
- CONES MAY BE SUBSTITUTED FOR BARRICADES OR DRUMS AT HALF THE SPACING DURING DAY OPERATIONS. CONES SHALL BE A MINIMUM OF 28 (710) IN HEIGHT.
- SIGNING AND THE WORK ZONE, A SINGLE HEADED ARROW (M6-1) SHALL BE USED IN LIEU OF THE DOUBLE HEADED ARROW (M6-4).
- WHEN WORK IS BEING PERFORMED ON A SIDE ROAD OR DRIVEWAY, FOLLOW THE APPLICABLE STANDARD(S). THE DIRECTIONAL ARROW (M6-1 OR M6-4) SHALL BE COVERED OR REMOVED WHEN NO LONGER CONSISTENT WITH THE TRAFFIC CONTROL SET-UP.
- ADVANCE WARNING SIGNS ARE TO BE OMITTED ON DRIVEWAYS UNLESS OTHERWISE SPECIFIED IN THE PLANS OR BY THE ENGINEER.
- THE TRAFFIC CONTROL AND PROTECTION FOR SIDE ROADS, INTERSECTIONS, AND DRIVEWAYS SHALL BE INCLUDED IN THE COST OF SPECIFIED TRAFFIC CONTROL STANDARDS OR ITEMS.

All dimensions are in inches (millimeters) unless otherwise shown.

MODEL: Default
FILE NAME: p:\ultra-caw-beach\paw.com\PIV\DOT\Documents\DOT Office\Dir\rdet_1\Project\104322\CADD\data\Design\104322-01\F54.dgn

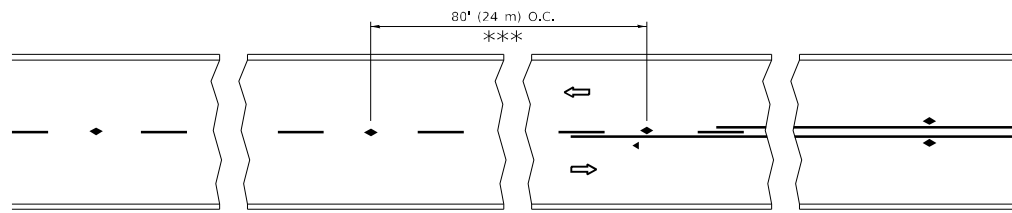
USER NAME = mesado	DESIGNED - L.H.A.	REVISED - A. HOUSEH 10-15-96
	DRAWN -	REVISED - T. RAMMACHER 01-06-00
PLOT SCALE = 100,0000' / in.	CHECKED -	REVISED - A. SCHUETZE 07-01-13
PLOT DATE = 4/29/2022	DATE - 06-89	REVISED - A. SCHUETZE 09-15-16

**STATE OF ILLINOIS
DEPARTMENT OF TRANSPORTATION**

**TRAFFIC CONTROL AND PROTECTION FOR
SIDE ROADS, INTERSECTIONS, AND DRIVEWAYS**

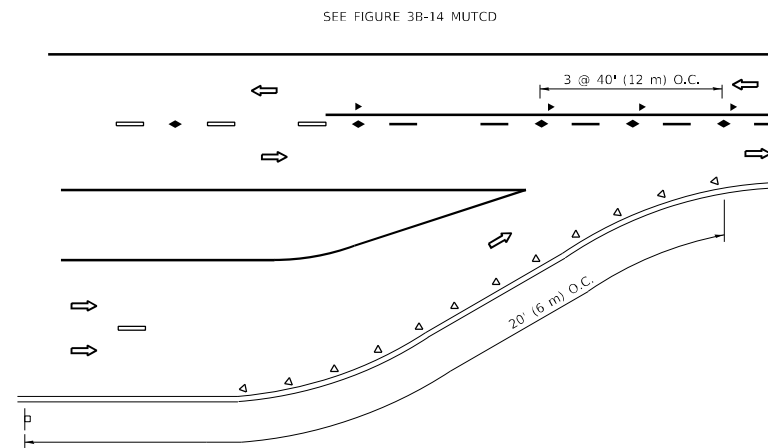
SCALE: NONE SHEET 1 OF 1 SHEETS STA. TO STA.

F.A.P. RTE.	SECTION	COUNTY	TOTAL SHEETS	SHEET NO.
525	2021-157-R5	MCHENRY	25	17
TC-10		CONTRACT NO. 62P74		
ILLINOIS FED. AID PROJECT				

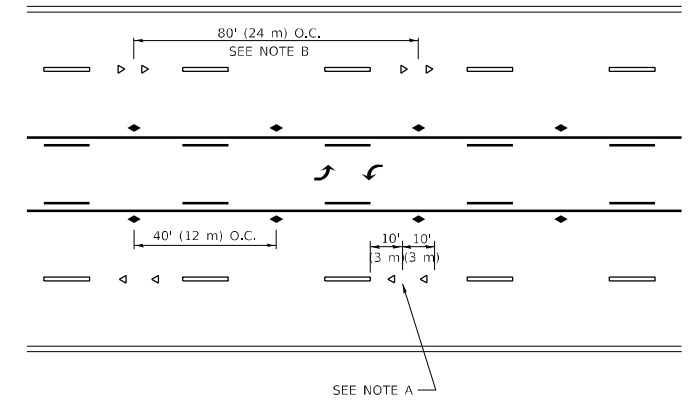


*** REDUCE TO 40' (12 m) O.C. ON CURVES WITH POSTED OR ADVISORY SPEED 45 M.P.H. (70 km/h) OR LESS.

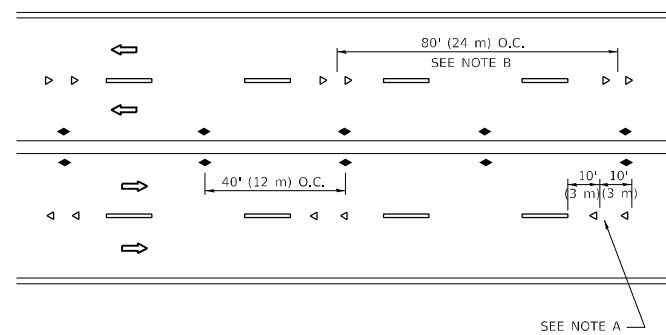
TWO-LANE/TWO-WAY



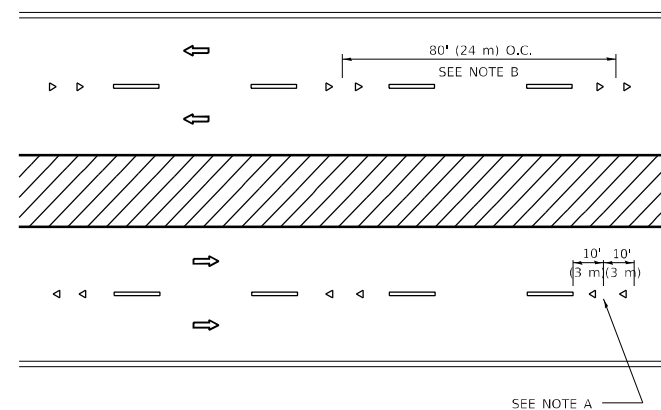
LANE REDUCTION TRANSITION



TWO-WAY LEFT TURN



MULTI-LANE/UNDIVIDED



MULTI-LANE/DIVIDED

GENERAL NOTES

1. MARKERS USED WITH DASHED LINES SHALL BE CENTERED IN THE GAP BETWEEN SEGMENTS.
2. MARKERS USED ADJACENT TO SOLID LINES SHALL BE OFFSET 2 TO 3 (50 TO 75) TOWARD TRAFFIC AS SHOWN.
3. MARKERS THROUGH TANGENTS LESS THAN 500' (150 m) IN LENGTH BETWEEN CURVES SHALL BE INSTALLED AT THE LESSER OF THE TWO CURVE SPACINGS.
4. MARKERS ARE TO BE USED ADJACENT TO BOTH SOLID WHITE LINES IN DUAL LEFT TURN LANES

SYMBOLS

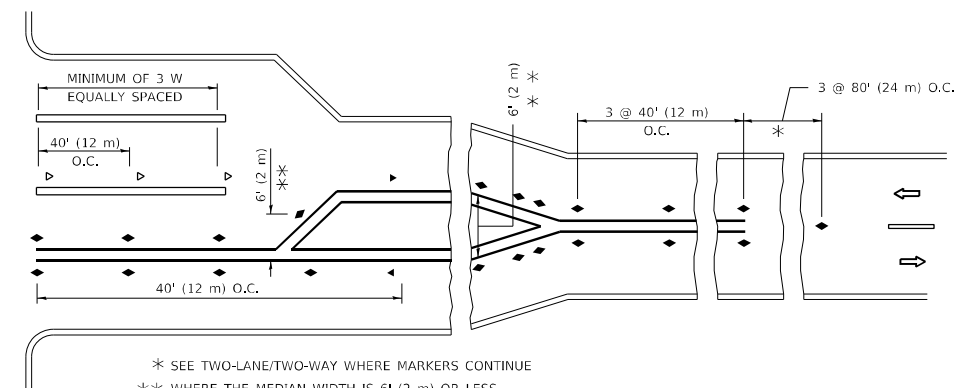
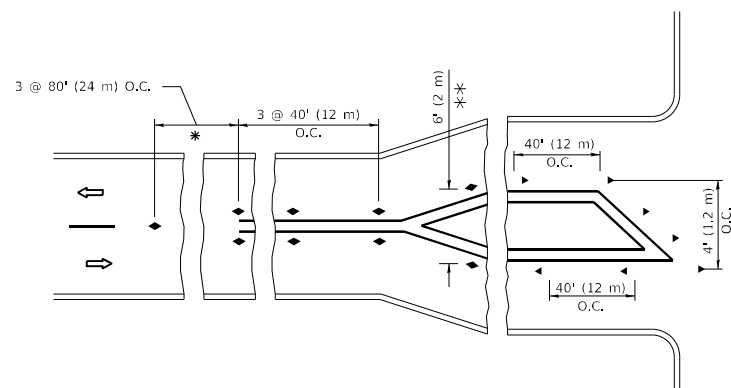
- YELLOW STRIPE
- WHITE STRIPE
- ◀ ONE-WAY AMBER MARKER
- ◀ ONE-WAY CRYSTAL MARKER (W/O)
- ◆ TWO-WAY AMBER MARKER

LANE MARKER NOTES

- A. USE DOUBLE LANE LINE MARKERS SPACED AS SHOWN.
- B. REDUCE TO 40' (12 m) O.C. ON CURVES WHERE ADVISORY SPEEDS ARE 10 M.P.H (20 km/h) LOWER THAN POSTED SPEEDS.

DESIGN NOTES

1. DOUBLE LANE LINE MARKERS SHALL BE USED UNLESS SPECIFIED OTHERWISE.
2. EXCEPT AS SHOWN ON THE LANE REDUCTION TRANSITION AND FREEWAY EXIT RAMP DETAIL, MARKERS ARE NOT TO BE SPECIFIED ON RIGHT EDGE LINES.
3. THE EXACT MARKER LIMITS, SPACING, AND COLOR SHALL BE INCLUDED IN THE PLANS WHEN STANDARD SPECIFICATIONS ARE NOT BEING USED.
4. MARKERS SHOULD NOT BE USED ALONGSIDE CURBS EXCEPT FOR EXTREMELY SHORT SECTIONS OF CURBS WHERE NOT MORE THAN TWO MARKERS WOULD BE INVOLVED.



* SEE TWO-LANE/TWO-WAY WHERE MARKERS CONTINUE
 ** WHERE THE MEDIAN WIDTH IS 6' (2 m) OR LESS USE TWO-WAY MARKERS.

TURN LANES

All dimensions are in inches (millimeters) unless otherwise shown.

MODEL: Default
 FILE: 304162_2021-157-R5.ctb
 PROJECT: I:\Projects\2021\2021-157-R5\2021-157-R5.dwg
 PLOT DATE: 4/29/2022

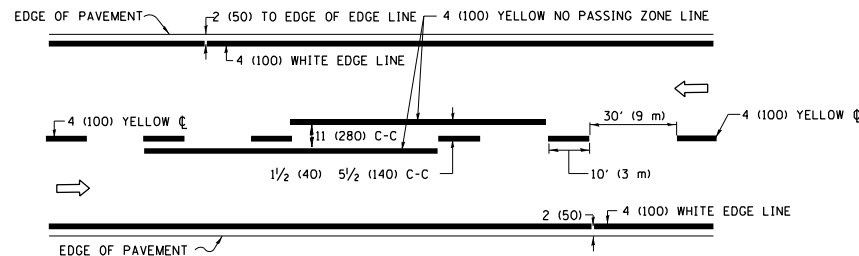
USER NAME = mesado	DESIGNED -	REVISED - T. RAMMACHER 03-12-99
PLOT SCALE = 100,0000' / in.	DRAWN -	REVISED - T. RAMMACHER 01-06-00
PLOT DATE = 4/29/2022	CHECKED -	REVISED - C. JUCIUS 09-09-09
	DATE -	REVISED - C. JUCIUS 07-01-13

**STATE OF ILLINOIS
 DEPARTMENT OF TRANSPORTATION**

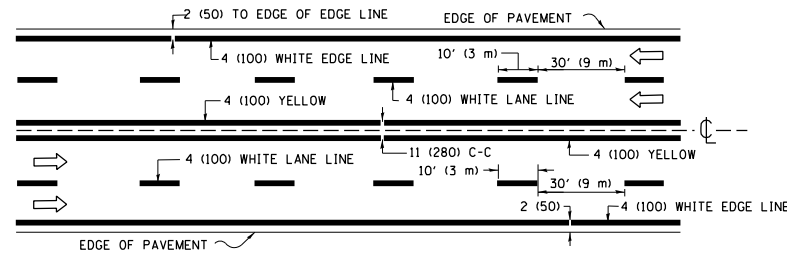
**TYPICAL APPLICATIONS
 RAISED REFLECTIVE PAVEMENT MARKERS (SNOW-PLOW RESISTANT)**

SCALE: NONE SHEET 1 OF 1 SHEETS STA. TO STA.

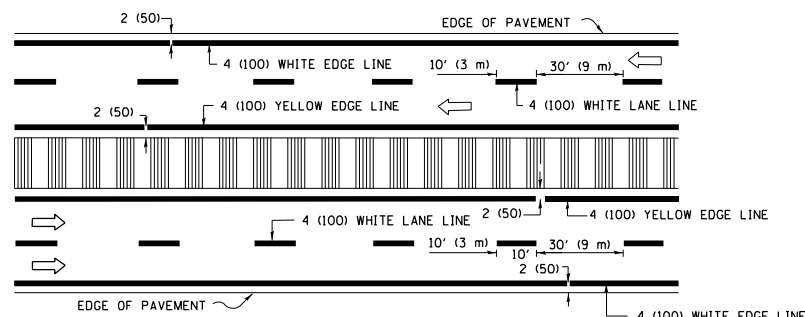
F.A.P. RTE.	SECTION	COUNTY	TOTAL SHEETS	SHEET NO.
525	2021-157-R5	MCHENRY	25	18
TC-11			CONTRACT NO. 62P74	
ILLINOIS FED. AID PROJECT				



2-LANE ROADWAY

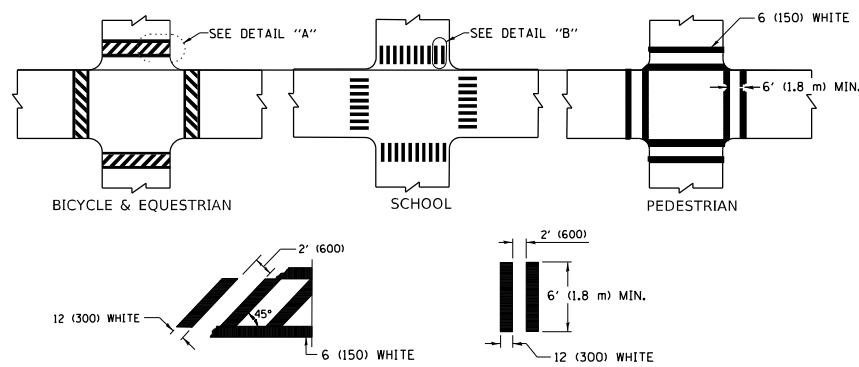


MULTI-LANE UNDIVIDED



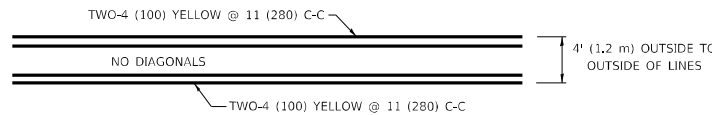
MULTI-LANE DIVIDED WITH MEDIAN

TYPICAL LANE AND EDGE LINE MARKING

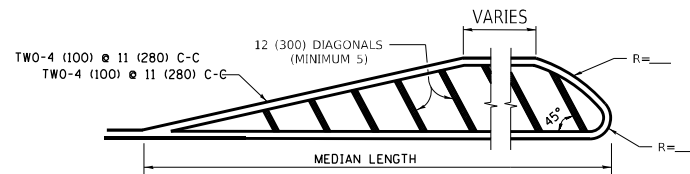


TYPICAL CROSSWALK MARKING

* MARKINGS SHALL BE INSTALLED PARALLEL TO THE CENTERLINE OF THE ROAD WHICH IT CROSSES



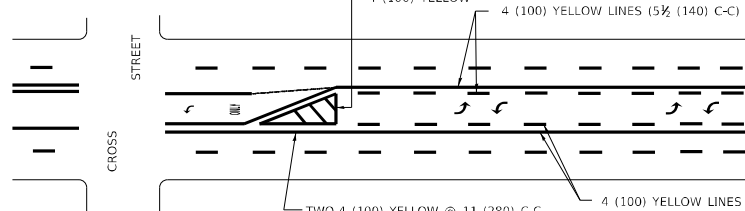
4' (1.2 m) WIDE MEDIANS ONLY



MEDIANS OVER 4' (1.2 m) WIDE

FOR MEDIAN LENGTHS WHERE DIAGONAL SPACING CANNOT BE ATTAINED, USE 5 (FIVE) EQUALLY SPACED DIAGONAL LINES.

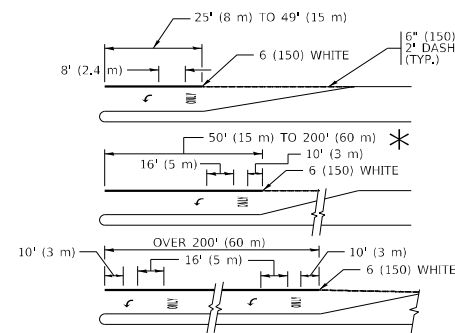
DIAGONAL LINE SPACING: 50' (15 m) C-C (LESS THAN 30MPH (50 km/h))
75' (25 m) C-C 30MPH (50 km/h) TO 45MPH (70 km/h)
150' (45 m) C-C (MORE THAN 45MPH (70 km/h))



TYPICAL PAINTED MEDIAN MARKING

MEDIAN WITH TWO-WAY LEFT TURN LANE

TYPICAL PAINTED MEDIAN MARKING

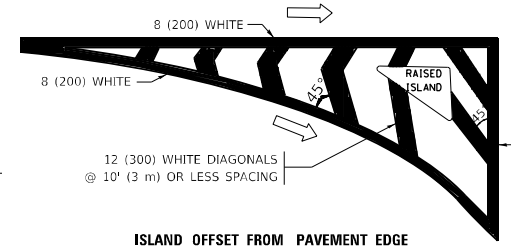


FULL SIZE LETTERS 8' (2.4 m) AND ARROWS SHALL BE USED.
AREA = 15.6 SQ. FT. (1.5 m²) ONLY AREA = 20.8 SQ. FT. (1.9 m²)

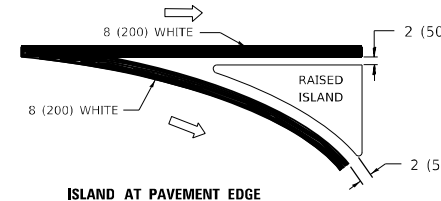
* TURN LANES IN EXCESS OF 400' (120 m) IN LENGTH MAY HAVE AN ADDITIONAL SET OF ARROW - "ONLY" INSTALLED MIDWAY BETWEEN THE OTHER TWO SETS OF ARROW - "ONLY".

TYPICAL LEFT (OR RIGHT) TURN LANE

TYPICAL TURN LANE MARKING

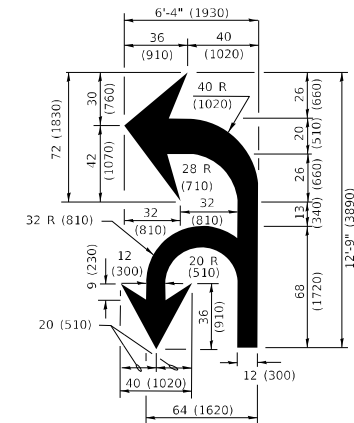


ISLAND OFFSET FROM PAVEMENT EDGE

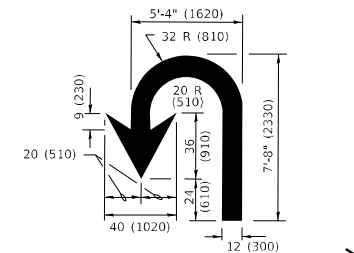


ISLAND AT PAVEMENT EDGE

TYPICAL ISLAND MARKING



COMBINATION LEFT AND U-TURN



U-TURN

LANE REDUCTION TRANSITION

* LANE REDUCTION ARROWS REQUIRED AT SPEEDS OF 45 MPH OR GREATER OR WHEN SPECIFIED IN PLANS.

D(FT)	SPEED LIMIT
345	30
425	35
500	40
580	45
665	50
750	55

TYPE OF MARKING	WIDTH OF LINE	PATTERN	COLOR	SPACING / REMARKS
CENTERLINE ON 2 LANE PAVEMENT	4 (100)	SKIP-DASH	YELLOW	10' (3 m) LINE WITH 30' (9 m) SPACE
CENTERLINE ON MULTI-LANE UNDIVIDED PAVEMENT	2 @ 4 (100)	SOLID	YELLOW	11 (280) C-C
NO PASSING ZONE LINES: FOR ONE DIRECTION FOR BOTH DIRECTIONS	4 (100) 2 @ 4 (100)	SOLID SOLID	YELLOW YELLOW	5 1/2 (140) C-C FROM SKIP-DASH CENTERLINE 11 (280) C-C OMIT SKIP-DASH CENTERLINE BETWEEN
LANE LINES	4 (100) 5 (125) ON FREEWAYS	SKIP-DASH SKIP-DASH	WHITE WHITE	10' (3 m) LINE WITH 30' (9 m) SPACE
DOTTED LINES (EXTENSIONS OF CENTER, LANE OR TURN LANE MARKINGS)	SAME AS LINE BEING EXTENDED	SKIP-DASH	SAME AS LINE BEING EXTENDED	2' (600) LINE WITH 6' (1.8 m) SPACE
EDGE LINES	4 (100)	SOLID	YELLOW-LEFT WHITE-RIGHT	OUTLINE MEDIANS IN YELLOW
TURN LANE MARKINGS	6 (150) LINE; FULL SIZE LETTERS & SYMBOLS (8' (2.4m))	SOLID	WHITE	SEE TYPICAL TURN LANE MARKING DETAIL
TWO WAY LEFT TURN MARKING	2 @ 4 (100) EACH DIRECTION 8' (2.4m) LEFT ARROW	SKIP-DASH AND SOLID IN PAIRS	YELLOW WHITE	10' (3 m) LINE WITH 30' (9 m) SPACE FOR SKIP-DASH; 5 1/2 (140) C-C BETWEEN SOLID LINE AND SKIP-DASH LINE SEE TYPICAL TWO-WAY LEFT TURN MARKING DETAIL
CROSSWALK LINES (PEDESTRIAN) A. DIAGONALS (BIKE & EQUESTRIAN) B. LONGITUDINAL BARS (SCHOOL)	2 @ 6 (150) 12 (300) @ 45° 12 (300) @ 90°	SOLID SOLID SOLID	WHITE WHITE WHITE	NOT LESS THAN 6' (1.8 m) APART 2' (600) APART 2' (600) APART SEE TYPICAL CROSSWALK MARKING DETAILS.
STOP LINES	24 (600)	SOLID	WHITE	PLACE 4' (1.2 m) IN ADVANCE OF AND PARALLEL TO CROSSWALK, IF PRESENT. OTHERWISE, PLACE AT DESIRED STOPPING POINT, PARALLEL TO CROSSROAD CENTERLINE, WHERE POSSIBLE
PAINTED MEDIANS	2 @ 4 (100) WITH 12 (300) DIAGONALS @ 45° NO DIAGONALS USED FOR 4' (1.2 m) WIDE MEDIANS	SOLID	YELLOW: TWO WAY TRAFFIC WHITE: ONE WAY TRAFFIC	11 (280) C-C FOR THE DOUBLE LINE SEE TYPICAL PAINTED MEDIAN MARKING.
GORE MARKING AND CHANNELIZING LINES	8 (200) WITH 12 (300) DIAGONALS @ 45°	SOLID	WHITE	DIAGONALS: 15' (4.5 m) C-C (LESS THAN 30MPH (50 km/h)) 20' (6 m) C-C 30MPH (50 km/h) TO 45MPH (70 km/h) 30' (9 m) C-C (OVER 45MPH (70 km/h))
RAILROAD CROSSING	24 (600) TRANSVERSE LINES; "RR" IS 6' (1.8 m) LETTERS; 16 (400) LINE FOR "X"	SOLID	WHITE	SEE STATE STANDARD 780001 AREA OF: "R"=3.6 SQ. FT. (0.33 m ²) EACH "X"=54.0 SQ. FT. (5.0 m ²)
SHOULDER DIAGONALS (REQUIRED FOR SHOULDERS > 8')	12 (300) @ 45°	SOLID	WHITE - RIGHT YELLOW - LEFT	50' (15 m) C-C (LESS THAN 30MPH (50 km/h)) 75' (25 m) C-C 30 MPH (50 km/h) TO 45MPH (70 km/h) 150' (45 m) C-C (OVER 45MPH (70 km/h))
U TURN ARROW	SEE DETAIL	SOLID	WHITE	16.3 SF
2 ARROW COMBINATION LEFT AND U TURN	SEE DETAIL	SOLID	WHITE	30.4 SF

FOR FURTHER DETAILS ON PAVEMENT MARKING REFER TO STANDARD SPECIFICATIONS FOR ROAD AND BRIDGE CONSTRUCTION AND STATE STANDARD 780001.

All dimensions are in inches (millimeters) unless otherwise shown.

MODEL: Default
FILE NAME: p:\buildnet-pw-benefits.com\PI\DOT\Documents\DOT Office\Dist\ref: 1\Project\104322\CADD\Drawings\104322-DIST-626.dgn

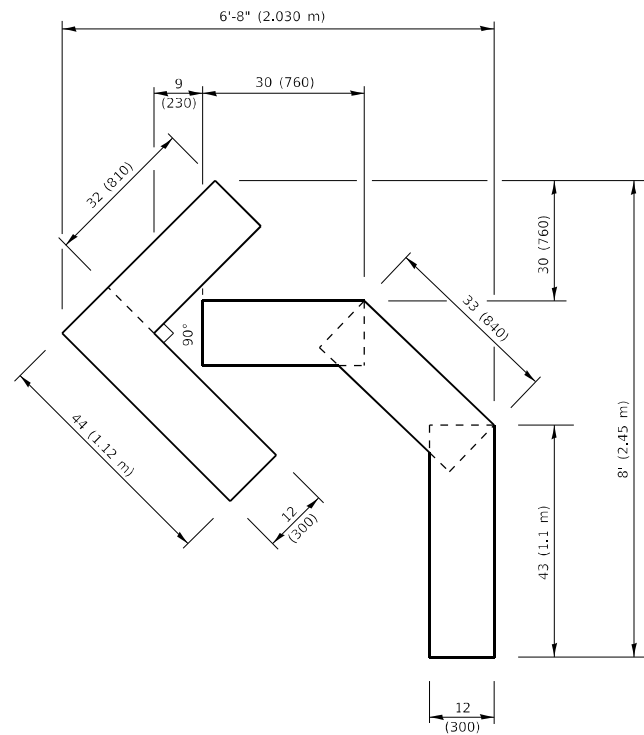
USER NAME = mesado	DESIGNED - EVERS	REVISED - C. JUCIUS 09-09-09
DRAWN -	REVISED - C. JUCIUS 07-01-13	
PLOT SCALE = 100,0000' / in.	CHECKED -	REVISED - C. JUCIUS 12-21-15
PLOT DATE = 4/29/2022	DATE - 03-19-90	REVISED - C. JUCIUS 04-12-16

**STATE OF ILLINOIS
DEPARTMENT OF TRANSPORTATION**

**DISTRICT ONE
TYPICAL PAVEMENT MARKINGS**

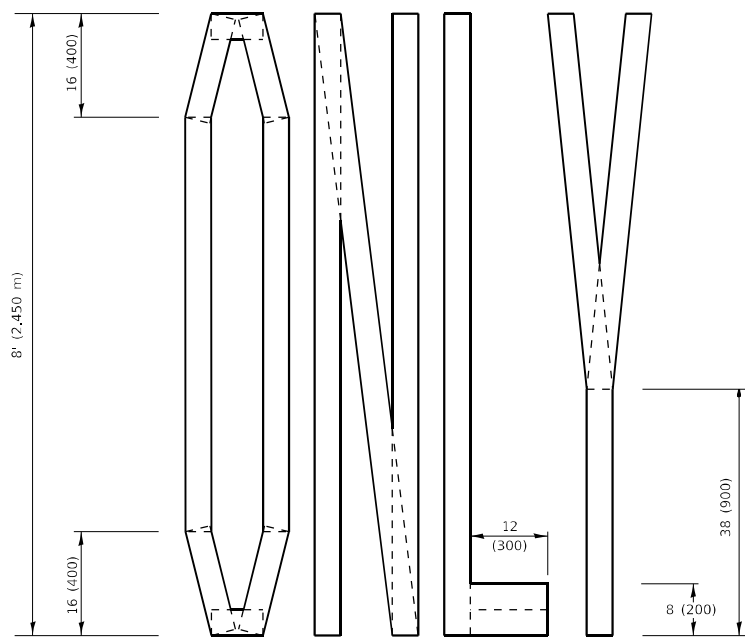
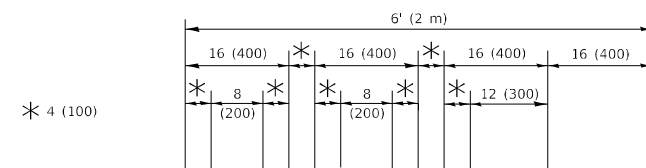
SCALE: NONE SHEET 1 OF 2 SHEETS STA. TO STA.

F.A.P. RTE.	SECTION	COUNTY	TOTAL SHEETS	SHEET NO.
525	2021-157-R5	MCHENRY	25	19
TC-13		CONTRACT NO. 62P74		
ILLINOIS FED. AID PROJECT				



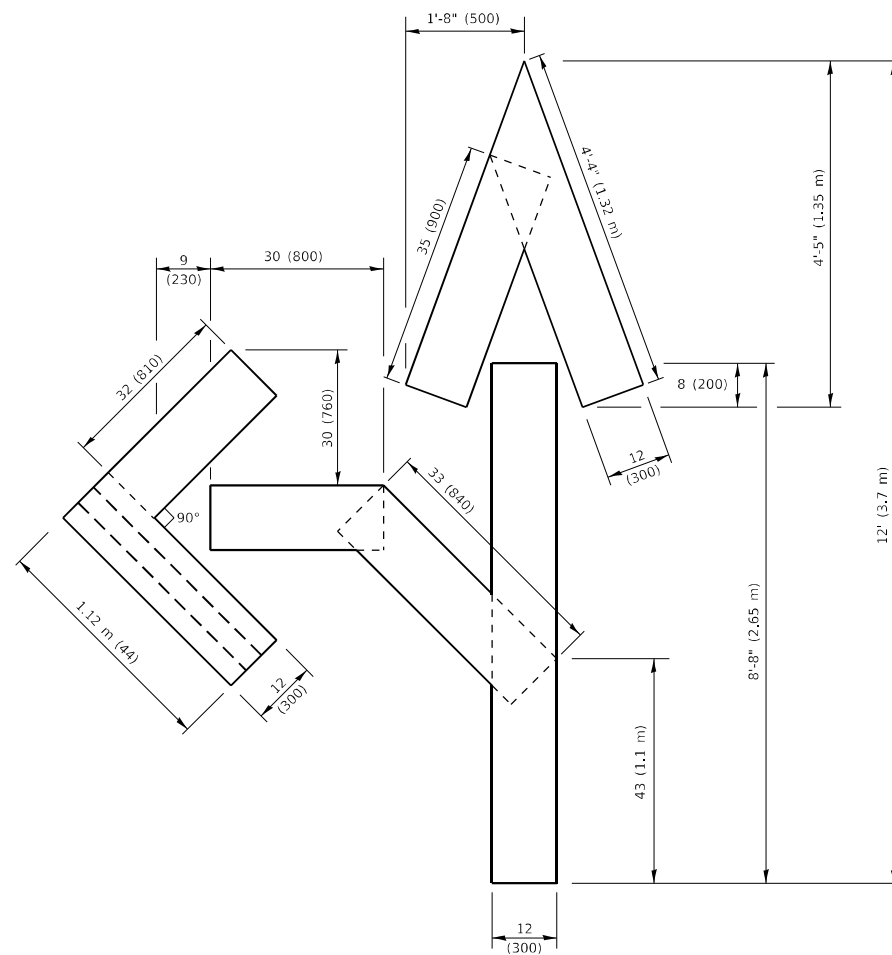
QUANTITY

4 (100) LINE = 45.5 ft. (13.9 m)
15.2 sq. ft. (1.41 sq. m)



QUANTITY

4 (100) LINE = 64.1 ft. (19.5 m)
21.4 sq. ft. (1.99 sq. m)

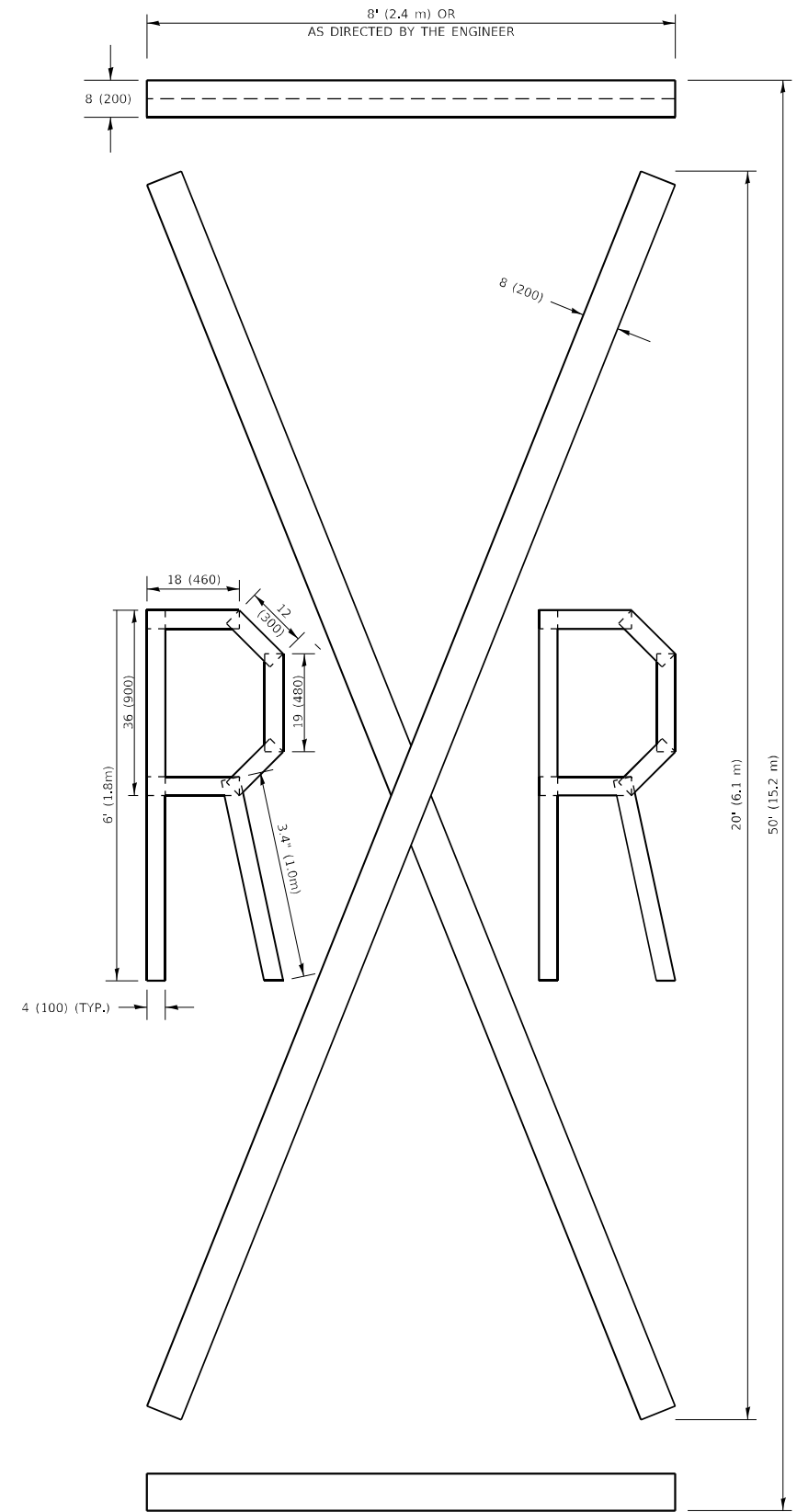


QUANTITY

4 (100) LINE = 82.5 ft. (25.1 m)
27.5 sq. ft. (2.53 sq. m)

NOTE:

ALL QUANTITIES OF PLACEMENT ARE REPRESENTED IN LINEAR FEET OF 4" LINES TO MATCH THE 4" TEMPORARY TAPE PAY ITEM AND REPRESENTS THE TOTAL QUANTITY OF 4" TAPE REQUIRED.



QUANTITY

4 (100) LINE = 225.9 ft. (68.9 m)
75.3 sq. ft. (6.99 sq. m)

All dimensions are in inches (millimeters) unless otherwise shown.

MODEL: Default
FILE: MAME_PAV_SymbolSet.dwg, com: P:\VINDOT\Documents\DOT Office\Director: I:\Project\104322\CADDData\Design\104322-DISE.dgn

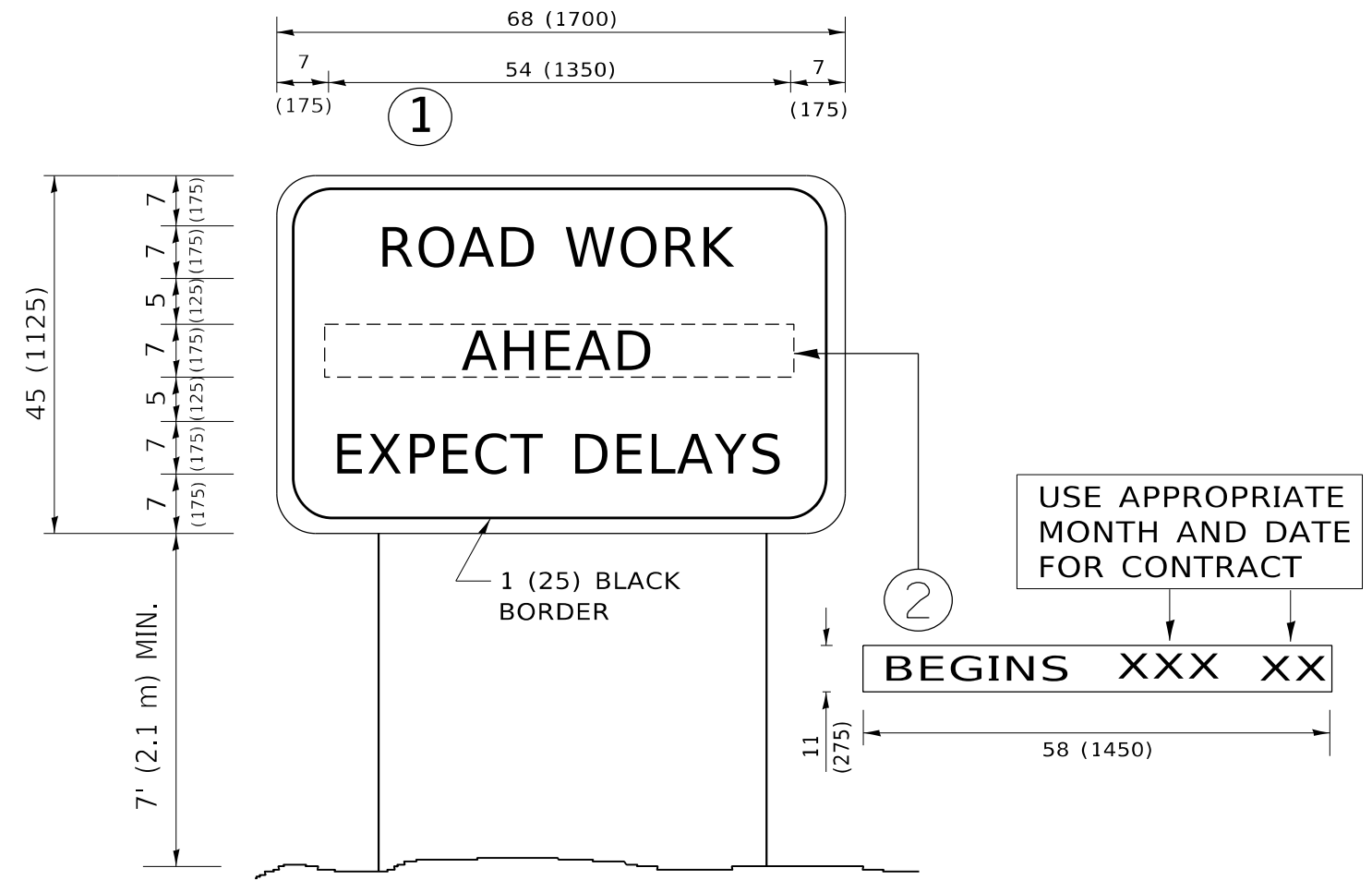
USER NAME = mesado	DESIGNED -	REVISED - T. RAMMACHER 03-02-98
	DRAWN -	REVISED - E. GOMEZ 08-28-00
PLOT SCALE = 100,0000 ' / in.	CHECKED -	REVISED - E. GOMEZ 08-28-00
PLOT DATE = 4/29/2022	DATE - 09-18-94	REVISED - A. SCHUETZE 09-15-16

**STATE OF ILLINOIS
DEPARTMENT OF TRANSPORTATION**

SHORT TERM PAVEMENT MARKING LETTERS AND SYMBOLS

SCALE: NONE SHEET 1 OF 1 SHEETS STA. TO STA.

F.A.P. RTE.	SECTION	COUNTY	TOTAL SHEETS	SHEET NO.
525	2021-157-R5	MCHENRY	25	20
TC-16		CONTRACT NO. 62P74		
ILLINOIS FED. AID PROJECT				



NOTES:

1. USE BLACK LETTERING ON ORANGE BACKGROUND.
2. ERECT SIGNS IN ADVANCE OF THE LOCATION FOR THE "ROAD CONSTRUCTION AHEAD" SIGN AT LOCATIONS AS DIRECTED BY THE ENGINEER.
3. ERECT SIGN ① WITH INSTALLED PANEL ② ONE WEEK PRIOR TO THE START OF CONSTRUCTION.
4. REMOVE PANEL ② SOON AFTER THE START OF CONSTRUCTION.
5. SEE SPECIAL PROVISION FOR "TEMPORARY INFORMATION SIGNING" FOR ADDITIONAL INFORMATION.
6. ONE SIGN ASSEMBLY EQUALS 25.70 SQ. FT. (2.3 SQ. M.)
7. SHALL BE PAID FOR AS TEMPORARY INFORMATION SIGNING.

ALL DIMENSIONS ARE IN INCHES (MILLIMETERS) UNLESS OTHERWISE SHOWN.

MODEL: Default
 FILE NAME: p:\bullet-raw-beadley.com\PIV\DOT\Documents\DOT Office\District 11\Project\104322\CADD\Drawings\104322-01545.dgn

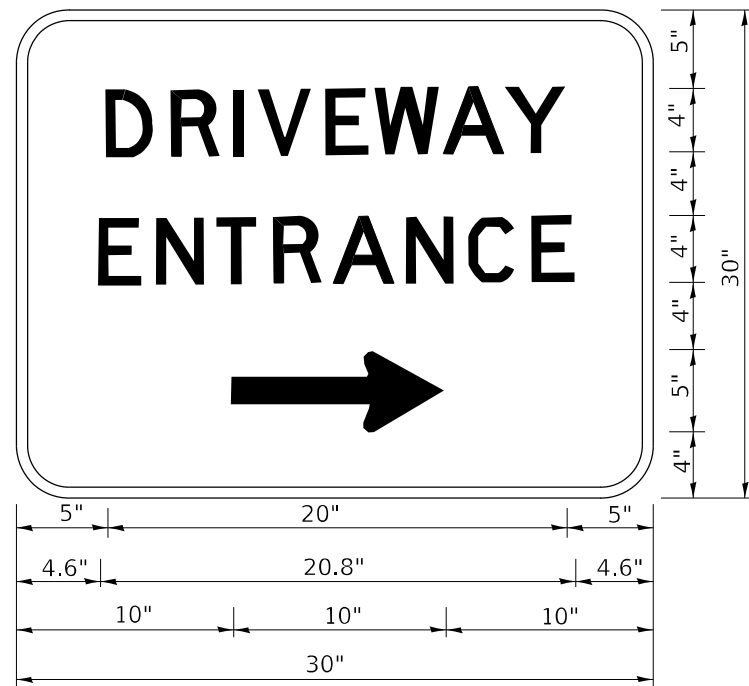
USER NAME = mesado	DESIGNED -	REVISED - R. MIRS 09-15-97
	DRAWN -	REVISED - R. MIRS 12-11-97
PLOT SCALE = 100,0000 ' / in.	CHECKED -	REVISED - T. RAMMACHER 02-02-99
PLOT DATE = 4/29/2022	DATE -	REVISED - C. JUCIUS 01-31-07

**STATE OF ILLINOIS
DEPARTMENT OF TRANSPORTATION**

**ARTERIAL ROAD
INFORMATION SIGN**

SCALE: NONE SHEET 1 OF 1 SHEETS STA. TO STA.

F.A.P. RTE.	SECTION	COUNTY	TOTAL SHEETS	SHEET NO.
525	2021-157-R5	MCHENRY	25	21
TC-22			CONTRACT NO. 62P74	
ILLINOIS FED. AID PROJECT				



3.0" RADIUS, 0.5" BORDER, WHITE ON GREEN; REFLECTORIZED
 "DRIVEWAY" D; "ENTRANCE" D; STANDARD ARROW CUSTOM 12.0" x 5.0"

NOTES:

1. HALF OF THE SIGNS WILL REQUIRE A LEFT HAND FACING ARROW.
2. TWO SIGNS SHALL BE USED AT EACH COMMERCIAL ENTRANCE PLACED BACK-TO-BACK: ONE WITH A RIGHT HAND ARROW (SHOWN) SHALL BE PLACED ON THE NEAR RIGHT SIDE THE DRIVEWAY AND ONE WITH A LEFT HAND ARROW SHALL BE PLACED ON THE FAR LEFT SIDE OF THE DRIVEWAY.
3. SIGNS TO BE PAID FOR AS ITEM "TEMPORARY INFORMATION SIGNING".

MODEL: Default
 FILE: \\mame-pc\public\paw.bentley.com\PIV\DOT\Documents\DOT Office\District_1\Project\104222\CADD\DATA\Design\104222-01\F56.dgn

USER NAME = mesado	DESIGNED -	REVISED - C. JUCIUS 02-15-07
	DRAWN -	REVISED -
PLOT SCALE = 100,0000' / in.	CHECKED -	REVISED -
PLOT DATE = 4/29/2022	DATE -	REVISED -

STATE OF ILLINOIS
 DEPARTMENT OF TRANSPORTATION

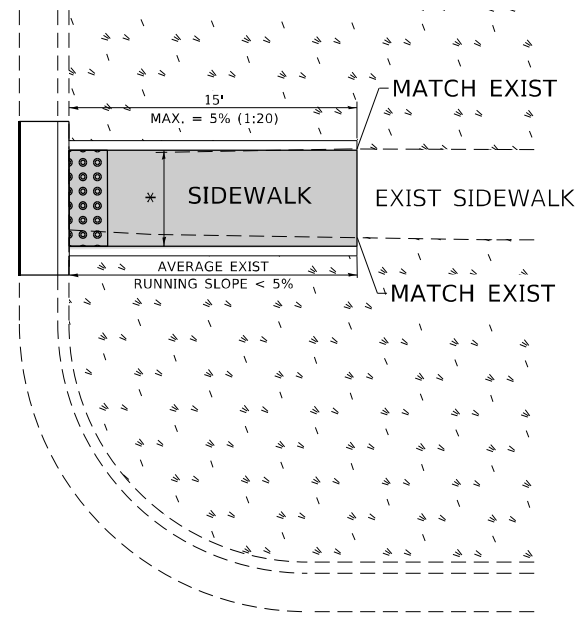
DRIVEWAY ENTRANCE SIGNING

SCALE: NONE SHEET 1 OF 1 SHEETS STA. TO STA.

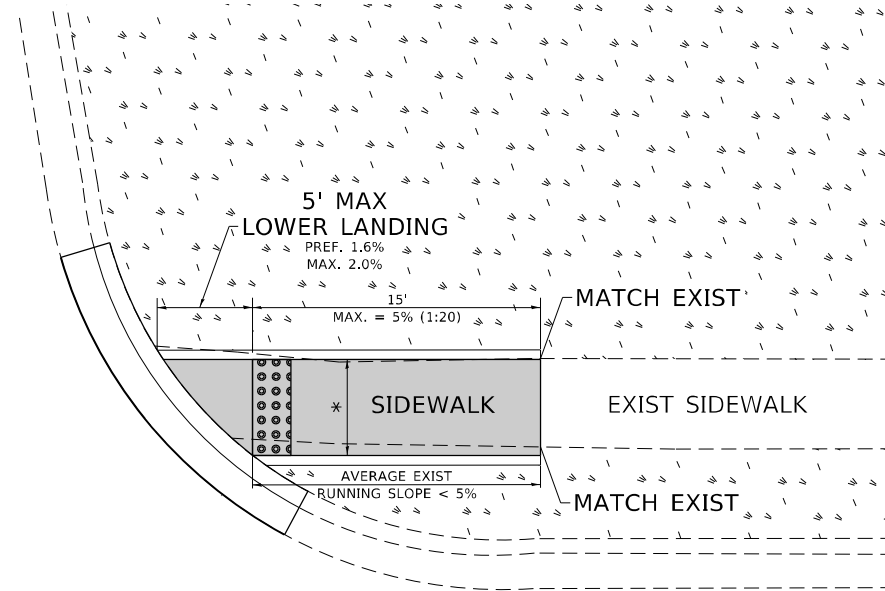
F.A.P. RTE.	SECTION	COUNTY	TOTAL SHEETS	SHEET NO.
525	2021-157-R5	MCHENRY	25	22
TC-26		CONTRACT NO. 62P74		
ILLINOIS FED. AID PROJECT				

ADA DETAIL FOR SINGLE PERPENDICULAR CURB RAMPS W/ EXIST. 5% OR LESS RUN. SLOPE

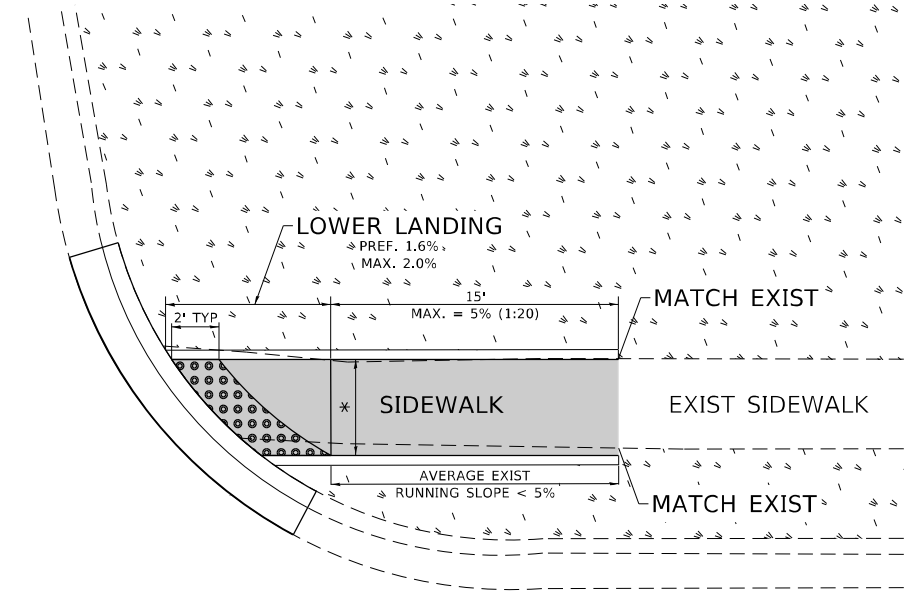
PD-01A



PD-01B



PD-01C



LEGEND

- PROPOSED SIDE CURB
- EXIST. GRASS
- PROPOSED SIDEWALK
- DETECTABLE WARNINGS

CONSTRUCTION NOTES:

- 1) ALL CROSS SLOPES ARE PREFERRED 1.6% (1:64), MAXIMUM 2% (1:50) EXCEPT WHEN TRANSITIONING TO EXISTING SIDEWALK
- * MATCH EXISTING SIDEWALK WIDTH

MODEL: Default
 FILE: \\adnet-cw-bea-fwy.com\P\DOT\Documents\DOT Office\District: 1\Project\104322\CADD\Drawings\104322-01545.dgn

USER NAME = mesado	DESIGNED -	REVISED -
	DRAWN - R. LEDEZMA	REVISED -
PLOT SCALE = 100,0000' / in.	CHECKED -	REVISED -
PLOT DATE = 4/29/2022	DATE - 10/02/2019	REVISED -

**STATE OF ILLINOIS
DEPARTMENT OF TRANSPORTATION**

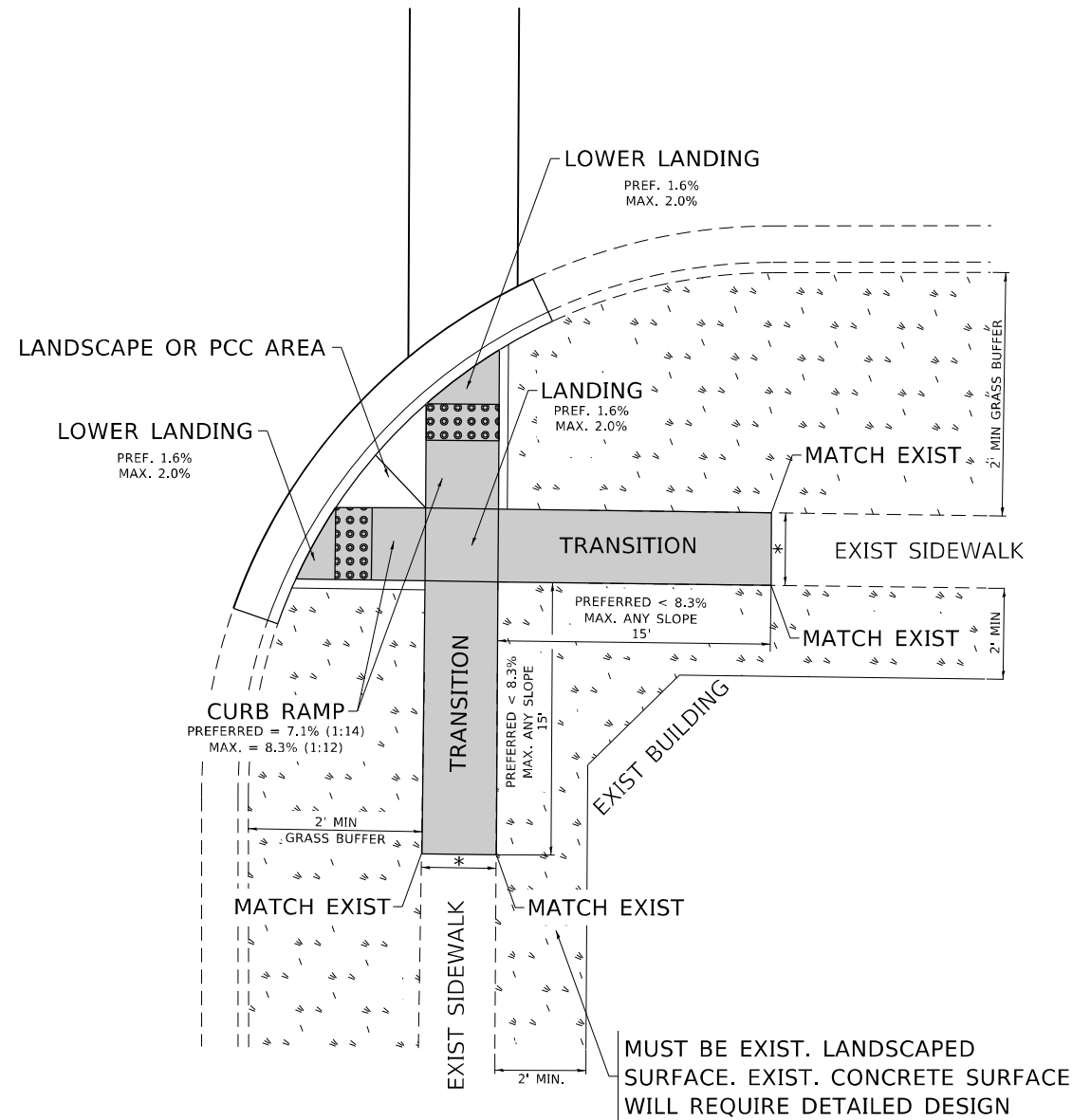
**PROJECT DETAIL FOR SINGLE PERPENDICULAR CURB RAMPS
(PD-01)**

SCALE: NONE SHEET OF SHEETS STA. TO STA.

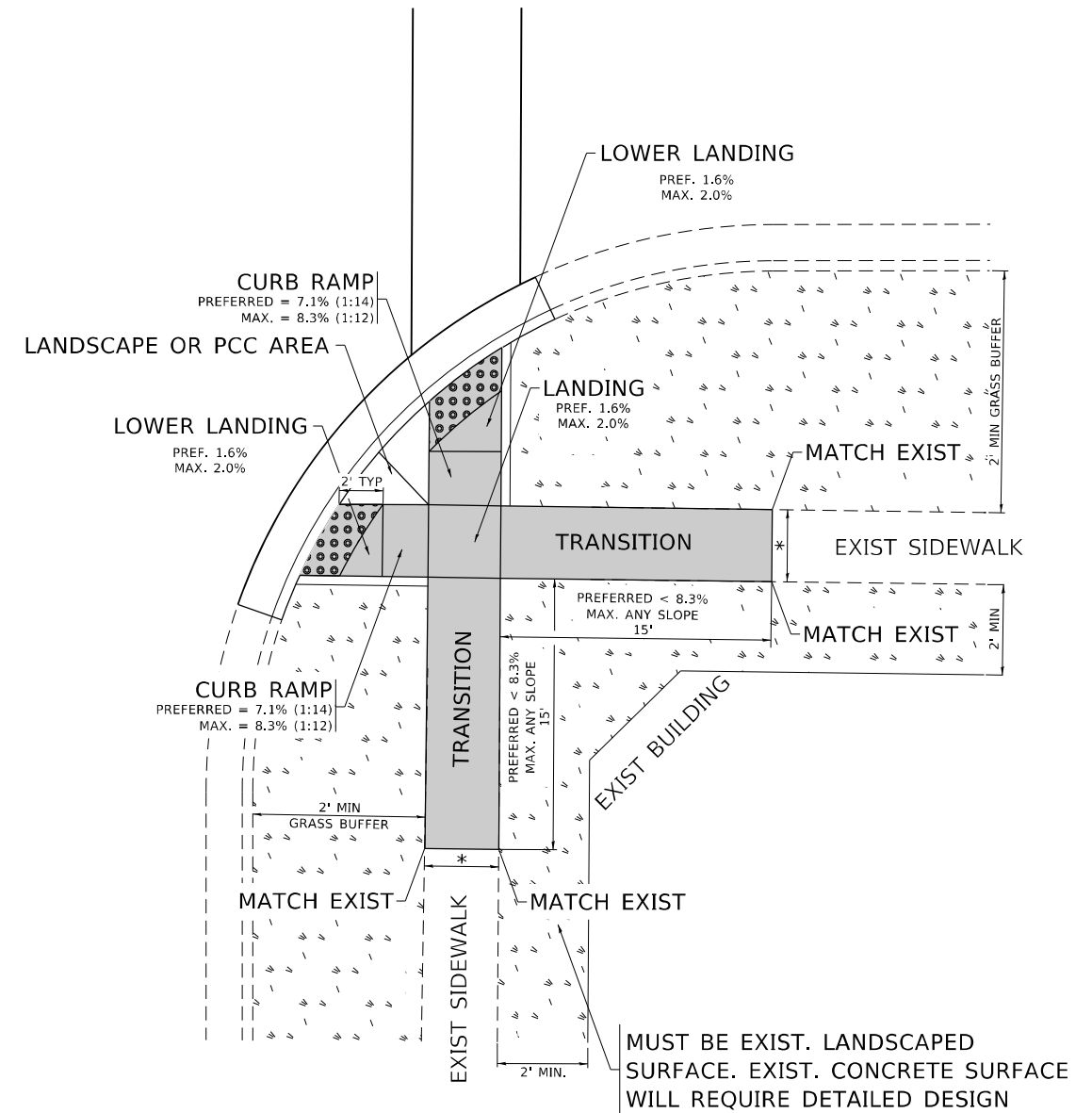
F.A.P. RTE.	SECTION	COUNTY	TOTAL SHEETS	SHEET NO.
525	2021-157-R5	MCHENRY	25	23
PD-01		CONTRACT NO. 62P74		
ILLINOIS FED. AID PROJECT				

ADA DETAIL FOR DOUBLE PERPENDICULAR CURB RAMPS

PD-03A



PD-03B



LEGEND

- EXIST. GRASS
- PROPOSED SIDEWALK
- DETECTABLE WARNINGS
- PROPOSED SIDE CURB

CONSTRUCTION NOTES:

- 1) ALL CROSS SLOPES ARE PREFERRED 1.6% (1:64), MAXIMUM 2% (1:50) EXCEPT WHEN TRANSITIONING TO EXISTING SIDEWALK
- * MATCH EXISTING SIDEWALK WIDTH

MODEL: Default
FILE: \\bluestaw.bentley.com\FWIDOT\Documents\DOT Office\District 1\Project\104322\CaddData\Design\104322-015\F03.dgn

USER NAME = mesado	DESIGNED -	REVISED -
	DRAWN - R. LEDEZMA	REVISED -
PLOT SCALE = 100,0000' / in.	CHECKED -	REVISED -
PLOT DATE = 4/29/2022	DATE - 10/02/2019	REVISED -

**STATE OF ILLINOIS
DEPARTMENT OF TRANSPORTATION**

**PROJECT DETAIL FOR DOUBLE PERPENDICULAR CURB RAMPS
(PD-03)**

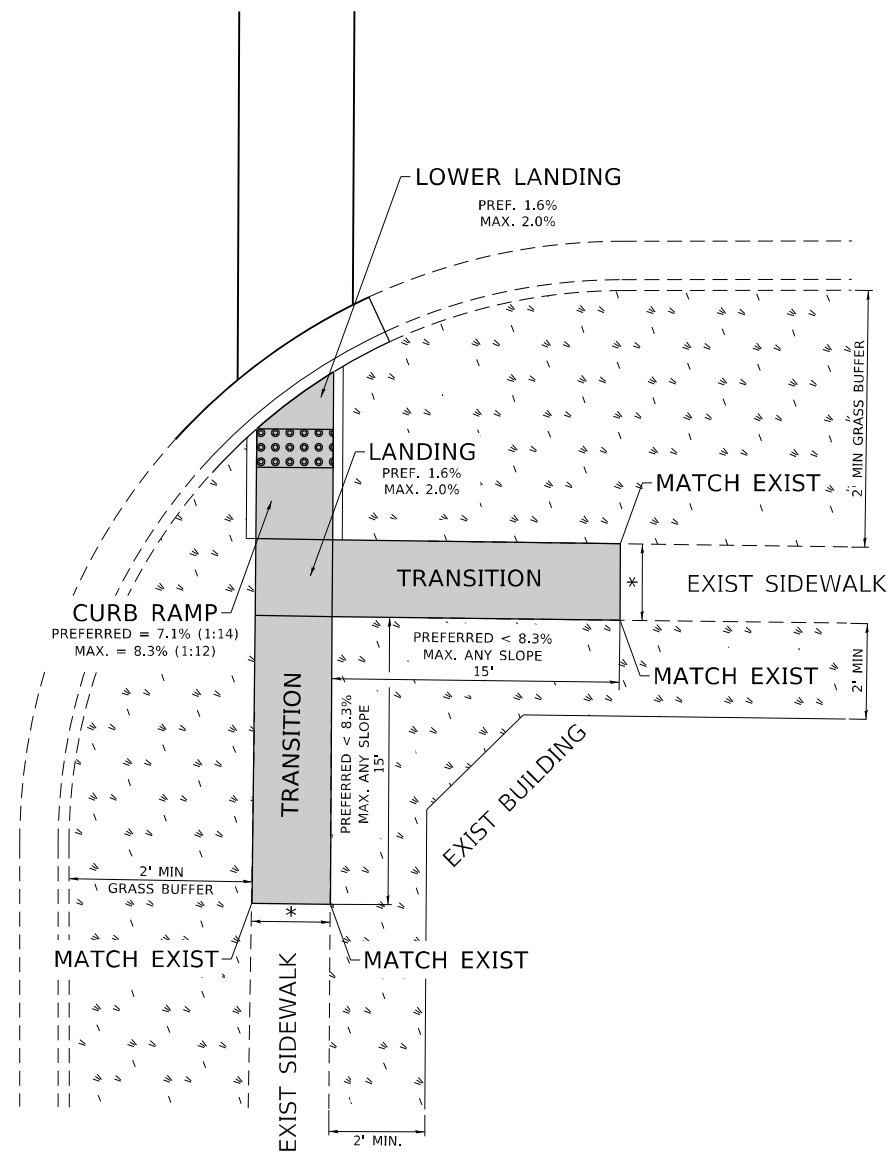
SCALE: NONE SHEET OF SHEETS STA. TO STA.

F.A.P. RTE.	SECTION	COUNTY	TOTAL SHEETS	SHEET NO.
525	2021-157-R5	MCHENRY	25	24
PD-03		CONTRACT NO. 62P74		

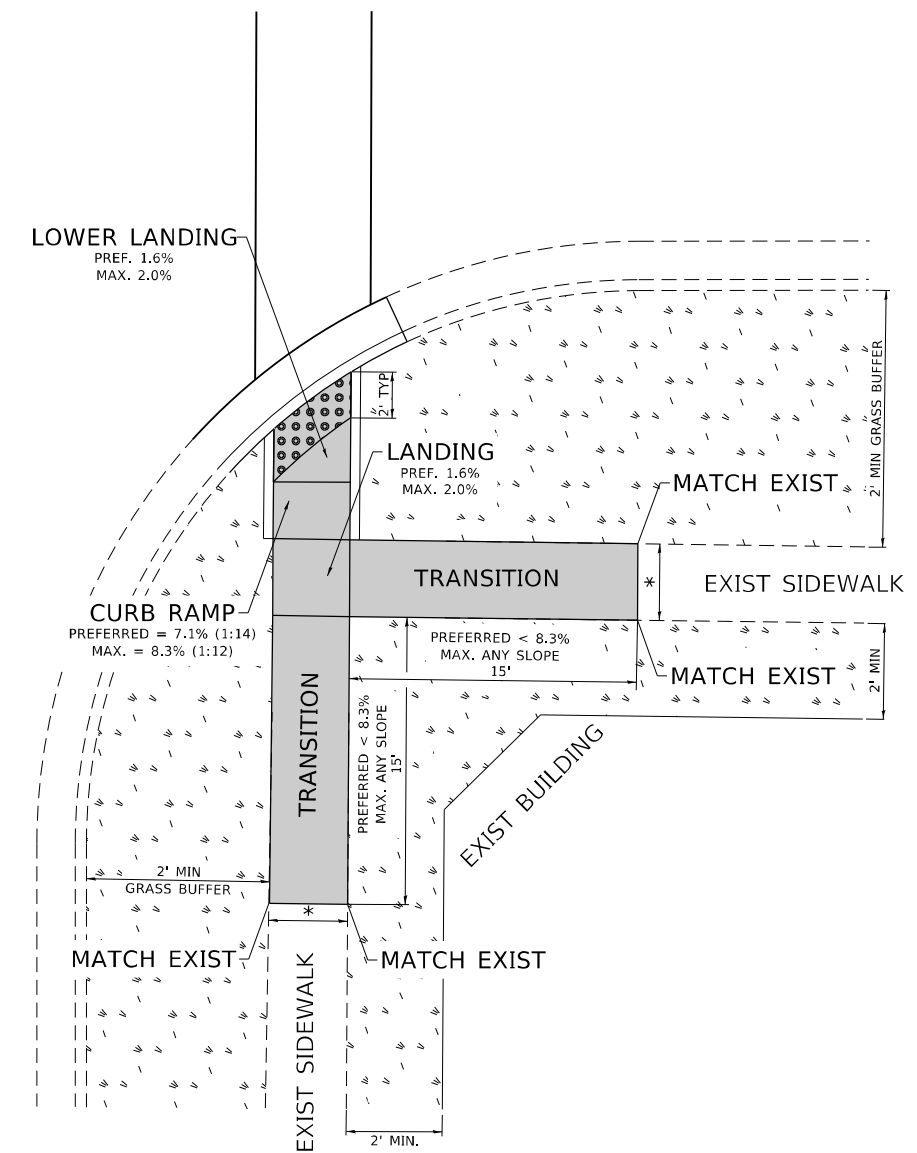
ILLINOIS FED. AID PROJECT

ADA DETAIL FOR SINGLE PERPENDICULAR CURB RAMPS W/ TURNING SPACE

PD-04A



PD-04B



LEGEND

- EXIST. GRASS
- PROPOSED SIDEWALK
- DETECTABLE WARNINGS
- PROPOSED SIDE CURB

CONSTRUCTION NOTES:

- 1) ALL CROSS SLOPES ARE PREFERRED 1.6% (1:64), MAXIMUM 2% (1:50) EXCEPT WHEN TRANSITIONING TO EXISTING SIDEWALK
- * MATCH EXISTING SIDEWALK WIDTH

MODEL: Default
FILE NAME: p:\project-cw-beadley.com\PIV\DOT\Documents\DOT Office\District 1\Project\104322\CADD\data\Design\104322-0154.dgn

USER NAME = mesado	DESIGNED -	REVISED -
	DRAWN - R. LEDEZMA	REVISED -
PLOT SCALE = 100,0000' / in.	CHECKED -	REVISED -
PLOT DATE = 4/29/2022	DATE - 10/02/2019	REVISED -

**STATE OF ILLINOIS
DEPARTMENT OF TRANSPORTATION**

**PROJECT DETAIL FOR SINGLE PERPENDICULAR CURB RAMPS WITH
TURNING SPACE (PD-04)**

SCALE: NONE SHEET OF SHEETS STA. TO STA.

F.A.P. RTE.	SECTION	COUNTY	TOTAL SHEETS	SHEET NO.
525	2021-157-R5	MCHENRY	25	25
PD-04		CONTRACT NO. 62P74		
ILLINOIS FED. AID PROJECT				