

STATE OF ILLINOIS
DEPARTMENT OF TRANSPORTATION

F.A.P. RTE.	SECTION	COUNTY	TOTAL SHEETS	SHEET NO.
343	2021-041-CJS	COOK	22	1
		ILLINOIS	CONTRACT NO. 62N64	

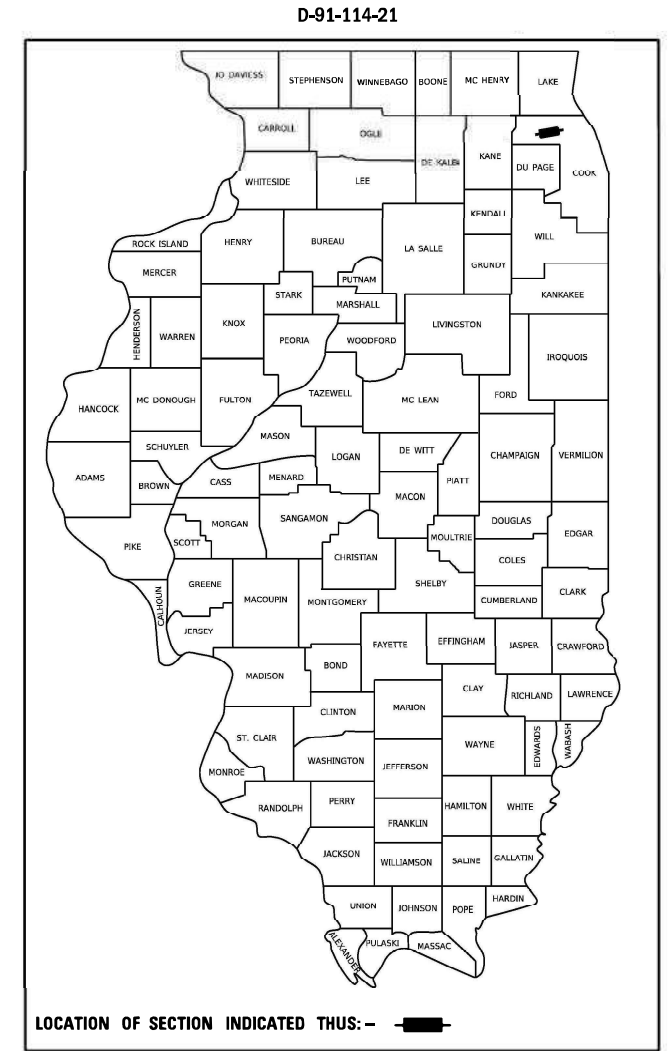
FOR INDEX OF SHEETS, SEE SHEET NO. 2

THE IMPROVEMENT IS LOCATED IN THE VILLAGES OF BARRINGTON HILLS, BARRINGTON, INVERNESS & PALATINE

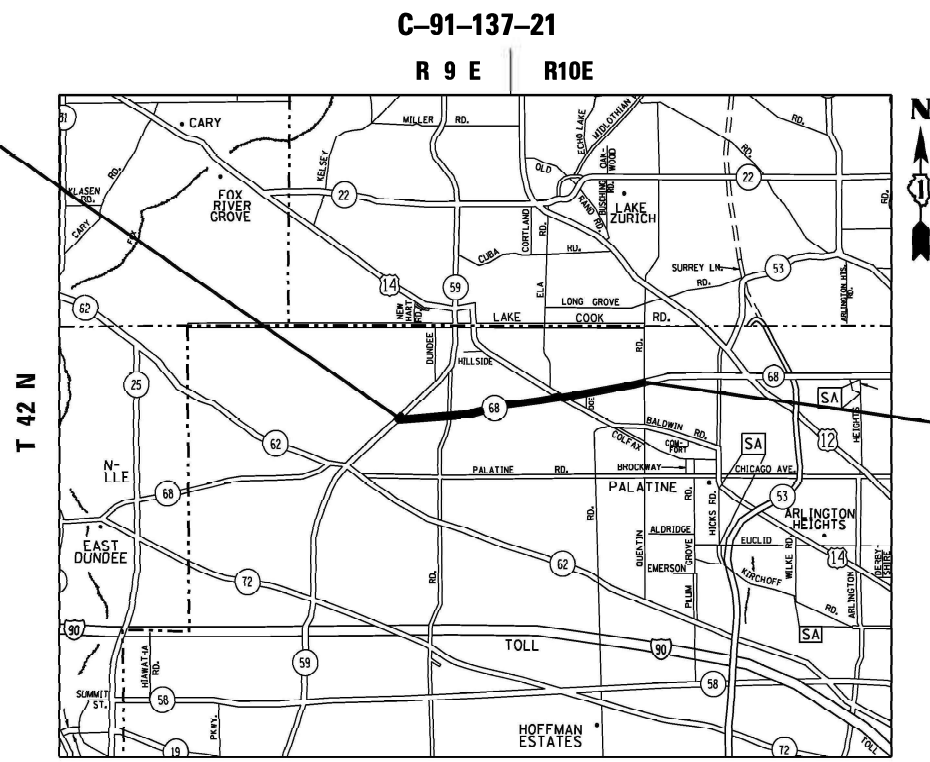
TRAFFIC DATA

ADT (2019) = 20,500
POSTED SPEED LIMIT = 45-55 MPH

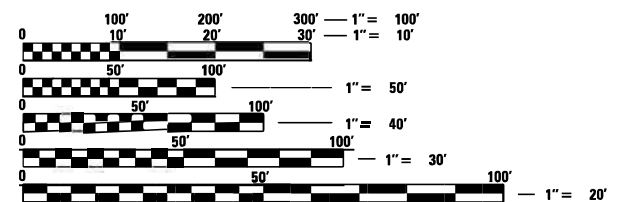
**PROPOSED
HIGHWAY PLANS**
FAP ROUTE 343: IL 68 (DUNDEE ROAD)
FROM IL 59 (NEW SUTTON RD)
TO WEST OF QUENTIN RD
SECTION: 2021-041-CJS
CRACK AND JOINT SEALING
COOK COUNTY



PROJECT BEGINS:
IL 59 (NEW SUTTON RD)
STATION 86 + 27



PROJECT ENDS:
QUENTIN ROAD
STATION 339 + 64



FULL SIZE PLANS HAVE BEEN PREPARED USING STANDARD ENGINEERING SCALES. REDUCED SIZED PLANS WILL NOT CONFORM TO STANDARD SCALES. IN MAKING MEASUREMENTS ON REDUCED PLANS, THE ABOVE SCALES MAY BE USED.

J.U.L.I.E.
JOINT UTILITY LOCATION INFORMATION FOR EXCAVATORS
1-800-892-0123
OR 811

BARRINGTON & PALATINE TOWNSHIP

GROSS LENGTH = 25,337 FT. = 4.798 MILE
NET LENGTH = 24,910 FT. = 4.717 MILE

PROJECT ENGINEER: RODRIGO LEDEZMA (847)705-4580
PROJECT MANAGER: J. ALAIN MIDY (847)221-3056

CONTRACT NO. 62N64

STATE OF ILLINOIS
DEPARTMENT OF TRANSPORTATION

SUBMITTED APRIL 28 2022
Jose Rios REGIONAL ENGINEER

June 10, 2022 [Signature]
ENGINEER OF DESIGN AND ENVIRONMENT

June 10, 2022 [Signature]
DIRECTOR OF HIGHWAYS PROJECT IMPLEMENTATION

PRINTED BY THE AUTHORITY
OF THE STATE OF ILLINOIS

INDEX OF SHEETS

SHEET NO.	DESCRIPTION
1.	TITLE SHEET
2.	INDEX OF SHEETS, HIGHWAY STANDARDS, AND GENERAL NOTES
3.	SUMMARY OF QUANTITIES
4.	TYPICAL SECTIONS
5 - 14.	ROADWAY AND PAVEMENT MARKING PLANS
15.	ENTRANCE RAMP AND CLOSURE DETAILS (TC-08)
16.	TRAFFIC CONTROL AND PROTECTION FOR SIDE ROADS, INTERSECTIONS, AND DRIVEWAYS (TC-10)
17.	TYPICAL APPLICATIONS RAISED REFLECTIVE PAVEMENT MARKERS (SNOW PLOW RESISTANT) (TC-11)
18.	DISTRICT ONE TYPICAL PAVEMENT MARKINGS (TC-13)
19.	TRAFFIC CONTROL AND PROTECTION AT TURN BAYS (TC-14)
20.	TRAFFIC CONTROL FOR SHOULDER CLOSURES AND PARTIAL RAMP CLOSURES (TC-17)
21.	ARTERIAL ROAD INFORMATION SIGN (TC-22)
22.	CRACK AND JOINT SEALING DETAIL (PD-11)

STATE HIGHWAY STANDARDS

STANDARD NO.	DESCRIPTION
000001-08	STANDARD SYMBOLS, ABBREVIATIONS AND PATTERNS
701006-05	OFF-ROAD OPERATIONS, 2L, 2W, 15' TO 24" FROM PAVEMENT EDGE
701011-04	OFF-RD MOVING OPERATIONS 2L,2W,DAY ONLY
701101-05	OFF-ROAD OPERATIONS, MULTILANE, 15' TO 24" FROM PAVEMENT EDGE
701301-04	LANE CLOSURE, 2L, 2W, SHORT TIME OPERATIONS
701306-04	LANE CLOSURE, 2L, 2W SLOW MOVING OPERATIONS DAY ONLY
701311-03	LANE CLOSURE, 2L, 2W, MOVING OPERATIONS - DAY ONLY=
701421-08	LANE CLOSURE, MULTILANE, DAY OPERATIONS ONLY
701426-09	LANE CLOSURE, MULTILANE, INTERMITTENT OR MOVING OPER.
701501-06	URBAN LANE CLOSURE, 2L,2W, UNDIVIDED
701502-09	URBAN LANE CLOSURE 2L,2W,WUTH BIDIRECTIONAL LEFT TURN LANE
701601-09	URBAN LANE CLOSURE, MULTILANE, 1W OR 2W WITH NONTRAVERSABLE MEDIAN
701701-10	URBAN LANE CLOSURE, MULTILANE INTERSECTION
701901-08	TRAFFIC CONTROL DEVICES

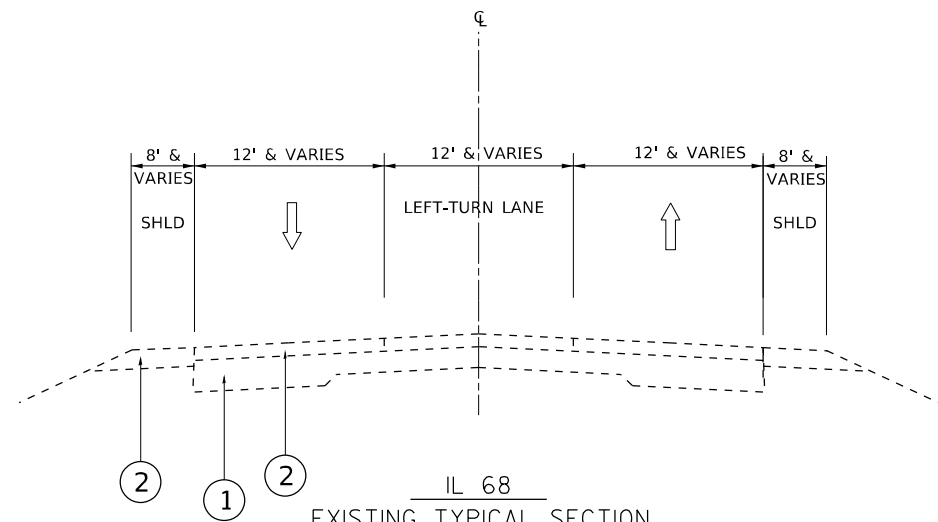
GENERAL NOTES

1. BEFORE STARTING ANY EXCAVATION, THE CONTRACTOR SHALL CALL "J.U.L.I.E." AT (800) 892-0123 OR 811 FOR FIELD LOCATIONS OF BURIED ELECTRIC, TELEPHONE AND GAS UTILITIES. 48 HOUR NOTIFICATION IS REQUIRED.
2. THE CONTRACTOR SHALL COORDINATE CONSTRUCTION ACTIVITIES WITH UTILITY COMPANIES, AND THE VILLAGE OF BARRINGTON HILLS, BARRINGTON, INVERNESS & PALATINE.
4. THE CONTRACTOR WILL NOT BE ALLOWED TO SET UP A YARD OR FIELD OFFICE ON STATE PROPERTY WITHOUT WRITTEN PERMISSION FROM THE DEPARTMENT.
5. ALL DAMAGE TO EXISTING PAVEMENT MARKINGS OR RAISED REFLECTIVE PAVEMENT MARKERS OUTSIDE THE REMOVAL LINE SHOWN ON THE PLANS SHALL BE REPLACED AT NO ADDITIONAL COST TO THE DEPARTMENT.
6. IT SHALL BE THE CONTRACTOR'S RESPONSIBILITY TO VERIFY ALL DIMENSIONS AND CONDITIONS EXISTING IN THE FIELD PRIOR TO CONSTRUCTION AND ORDERING OF MATERIALS.
7. BEFORE BEGINNING ANY WORK, THE CONTRACTOR SHALL RETAIN AND RECORD FOR FUTURE REFERENCE, ALL EXISTING PAVEMENT MARKING LINES (AND RAISED REFLECTIVE PAVEMENT MARKERS) IN ORDER THAT THESE LOCATIONS CAN BE RE-ESTABLISHED FOR STRIPING. EXACT LOCATIONS OF ALL PAVEMENT MARKINGS SHALL BE AS SHOWN ON THE PLANS OR AS DIRECTED BY THE ENGINEER.
8. THE CONTRACTOR SHALL CONTACT THE DISTRICT ONE TRAFFIC CONTROL SUPERVISOR AT KALPANA.KANNAN-HOSADURGA@ILLINOIS.GOV A MINIMUM OF 72 HOURS IN ADVANCE OF BEGINNING WORK.
9. THE RESIDENT ENGINEER SHALL CONTACT FADI SULTAN, ARTERIAL TRAFFIC FIELD ENGINEER VIA E-MAIL AT FADI.SULTAN@ILLINOIS.GOV, A MINIMUM OF 2 WEEKS PRIOR TO PLACEMENT OF PERMANENT PAVEMENT MARKINGS.
10. THE CONTRACTOR SHALL BE REQUIRED TO PROVIDE ACCESS TO ABUTTING PROPERTY AT ALL TIMES DURING THE CONSTRUCTION OF THIS PROJECT.
11. DO NOT SCALE PLANS FOR CONSTRUCTION DIMENSIONS.
12. CONTRACTOR SHALL MAINTAIN PEDESTRIAN ACCESS AT ALL TIMES DURING CONSTRUCTION.
13. PROPOSED RAISED REFLECTIVE PAVEMENT MARKER AS DETERMINED BY THE ENGINEER.
14. ALL DIRT AND DEBRIS CREATED BY THE ROUTING OPERATION SHALL BE CLEANED FROM THE PAVEMENT AND PAVED SHOULDERS AT THE END OF THE DAY'S OPERATION ACCORDING TO ARTICLE 107.15 OF THE STANDARD SPECIFICATIONS.
15. ALL CRACK ROUTING & JOINT RESEALING LOCATIONS WILL BE DETERMINED IN THE FIELD BY THE ENGINEER. CRACK ROUTING SHALL BE OMITTED WHERE VEHICLE DETECTOR LOOPS & RAISED REFLECTIVE PAVEMENT MARKERS ARE PRESENT IN THE PAVEMENT.
16. FOR PCC PAVEMENT, THE TRANSVERSE JOINTS WILL NOT BE CLEANED AND FILLED UNLESS DIRECTED BY THE ENGINEER.
17. ALL MODIFIED URETHANE PAVEMENT MARKING SHALL BE PLACED IMMEDIATELY AFTER CRACK AND JOINT SEALER TEMPERATURE HAS COOLED DOWN AND DOES NOT AFFECT THE APPLICATION OF THE MODIFIED URETHANE PAVEMENT MARKING.
18. MATERIALS RESULTING FROM THE ROUTING OF CRACKS IN THE EXISTING PAVEMENT MAYBE PLACED, SHAPED AND COMPACTED TO THE SATISFACTION OF THE ENGINEER ALONG EXSITING AGGREGATE SHOULDERS ADJACENT TO THE PAVEMENT. ALL MATERIALS RESULTING FROM THE ROUTING OF CRACKS IN PAVEMENT WITHOUT AGGREGATE SHOULDERS AND SUPPLUS MATERIALS RESULTING FROM THE ROUTING OF CRACKS IN PAVEMENT WITH AGGREGATE SHOULDERS SHALL BE DISPOSED IF AS SPECEFIED IN ARTICLE 202.03 OF THE STANDARD SPECIFICATIONS. OLD SEALANTS REMOVED PRIOR TO ROUTING SHALL BE DISPOSED OF AS SPECIFIED IN ARTICLE 202.03. THIS WORK WILL NOT BE PAID FOR SEPARATELY, BUT THE COST SHALL BE CONSIDERED AS INCLUDED IN THE CONTRACT UNIT PRICE FOR THE CONSTRUCTION ITEMS INVOLVED AND NO ADDITIONAL COMPENSATION WILL BE ALLOWED.

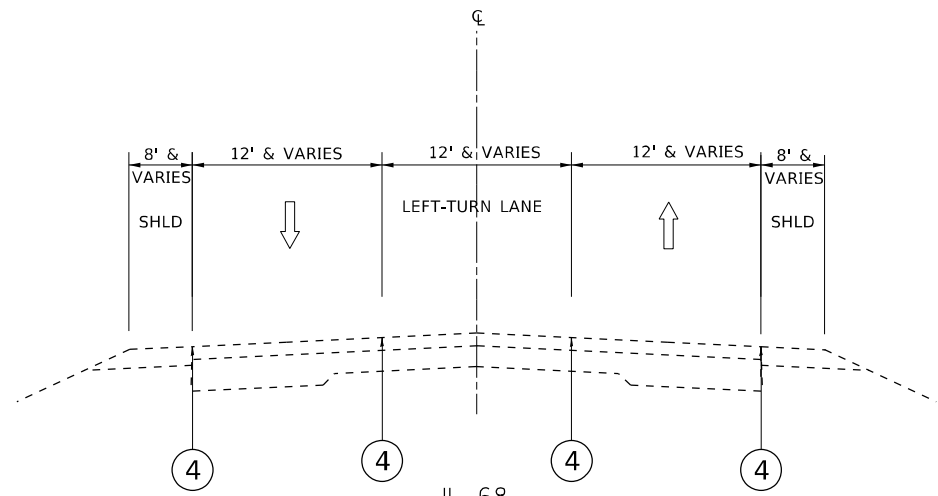
MODEL Default
 FILE NAME: p:\uldest-pw-bentley.com\PIV\DOT\Documents\DOT Office\Distrdet_1\Project\1142\ICAD\DATA\Design\1142_1\sh-cs-cover.dgn

USER NAME = diazla DESIGNED - DRAWN - PLOT SCALE = 100,0000 ' / in. PLOT DATE = 5/10/2022	CHECKED - DATE -	REVISED - REVISED - REVISED - REVISED -	STATE OF ILLINOIS DEPARTMENT OF TRANSPORTATION	TYPICAL SECTIONS FROM IL-59 (NEW SUTTON RD) TO WEST OF QUENTIN RD	F.A.P. RTE. 343 SECTION 2021-041-CIS COUNTY COOK TOTAL SHEETS 22 SHEET NO. 2 CONTRACT NO. 62N64	ILLINOIS FED. AID PROJECT
SCALE:			SHEET 1 OF 1 SHEETS STA. TO STA.			

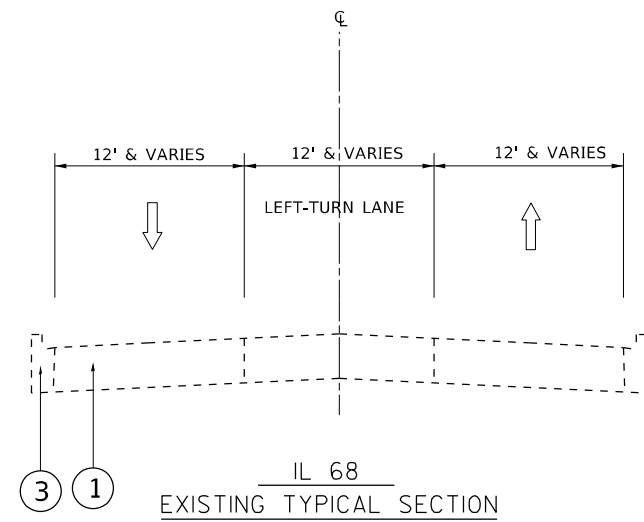
SUMMARY OF QUANTITIES			URBAN TOTAL QUANTITIES	CONSTRUCTION TYPE CODE					SUMMARY OF QUANTITIES			URBAN TOTAL QUANTITIES	CONSTRUCTION TYPE CODE					
CODE NO	ITEM	UNIT		100% STATE 0005						CODE NO	ITEM		UNIT	100% STATE 0005				
45100100	CRACK ROUTING (PAVEMENT)	FOOT	57550	57550					* 78009000	MODIFIED URETHANE PAVEMENT MARKING - LETTERS AND SYMBOLS	SO FT	1857	1857					
45100200	CRACK FILLING	POUND	16445	16445					* 78009004	MODIFIED URETHANE PAVEMENT MARKING - LINE 4"	FOOT	112719	112719					
45200100	JOINT OR CRACK ROUTING (PC CONCRETE PAVEMENT AND SHOULDER)	FOOT	7290	7290					* 78009006	MODIFIED URETHANE PAVEMENT MARKING - LINE 6"	FOOT	7675	7675					
45200300	JOINT OR CRACK FILLING	POUND	2085	2085					* 78009008	MODIFIED URETHANE PAVEMENT MARKING - LINE 8"	FOOT	700	700					
67100100	MOBILIZATION	L SUM	1	1					* 78009012	MODIFIED URETHANE PAVEMENT MARKING - LINE 12"	FOOT	4308	4308					
70100310	TRAFFIC CONTROL AND PROTECTION, STANDARD 701421	L SUM	1	1					* 78009024	MODIFIED URETHANE PAVEMENT MARKING - LINE 24"	FOOT	1268	1268					
70100460	TRAFFIC CONTROL AND PROTECTION, STANDARD 701306	L SUM	1	1					* 78100100	RAISED REFLECTIVE PAVEMENT MARKER	EACH	25	25					
70102620	TRAFFIC CONTROL AND PROTECTION, STANDARD 701501	L SUM	1	1					78300200	RAISED REFLECTIVE PAVEMENT MARKER REMOVAL	EACH	25	25					
70102622	TRAFFIC CONTROL AND PROTECTION, STANDARD 701502	L SUM	1	1					X6700407	ENGINEER'S FIELD OFFICE, TYPE A (D1)	CAL MO	6	6					
70102630	TRAFFIC CONTROL AND PROTECTION, STANDARD 701601	L SUM	1	1					Z0030850	TEMPORARY INFORMATION SIGNING	SO FT	102.8	102.8					
70102635	TRAFFIC CONTROL AND PROTECTION, STANDARD 701701	L SUM	1	1														



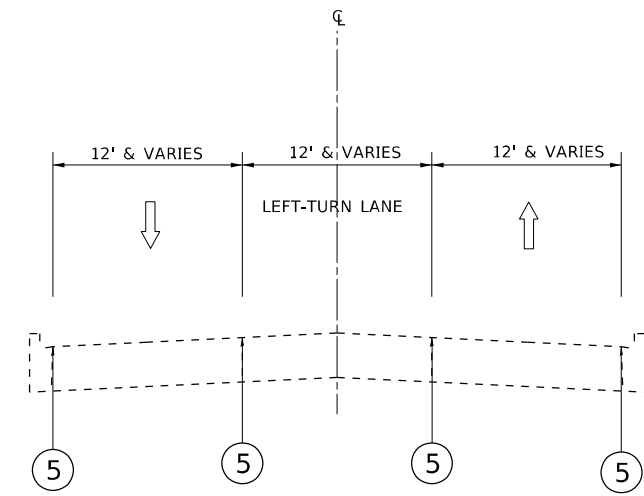
IL 68
EXISTING TYPICAL SECTION
STA. 86+27 TO STA. 257+88
STA. 272+25 TO STA. 339+64



IL 68
PROPOSED TYPICAL SECTION
STA. 86+27 TO STA. 257+88
STA. 272+25 TO STA. 339+64



IL 68
EXISTING TYPICAL SECTION
STA. 257+88 TO STA. 263+10
STA. 264+94 TO STA. 266+40
STA. 268+32 TO STA. 272+25



IL 68
PROPOSED TYPICAL SECTION
STA. 257+88 TO STA. 263+10
STA. 264+94 TO STA. 266+40
STA. 268+32 TO STA. 272+25

LEGEND

- ① EXISTING PCC PAVEMENT, ±10"
- ② EXISTING HMA SURFACE, ±7"
- ③ EXISTING COMB. CURB AND GUTTER, TYPE B-6.24
- ④ PROPOSED CRACK FILLING
- ⑤ PROPOSED JOINT AND CRACK FILLING

MODEL: Default
FILE NAME: p:\project\paw_bentley.com\p\il\dot\Documents\DOT Office\Dir\rdet_1\Project\1142\ICADD\data\Design\1142_1-shr-cover.dgn

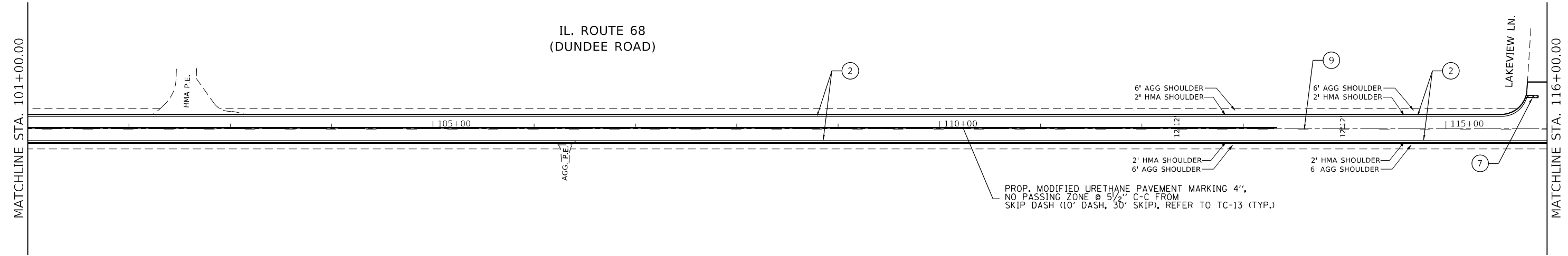
USER NAME = diaza	DESIGNED -	REVISED -
	DRAWN -	REVISED -
PLOT SCALE = 100,0000' / in.	CHECKED -	REVISED -
PLOT DATE = 5/10/2022	DATE -	REVISED -

**STATE OF ILLINOIS
DEPARTMENT OF TRANSPORTATION**

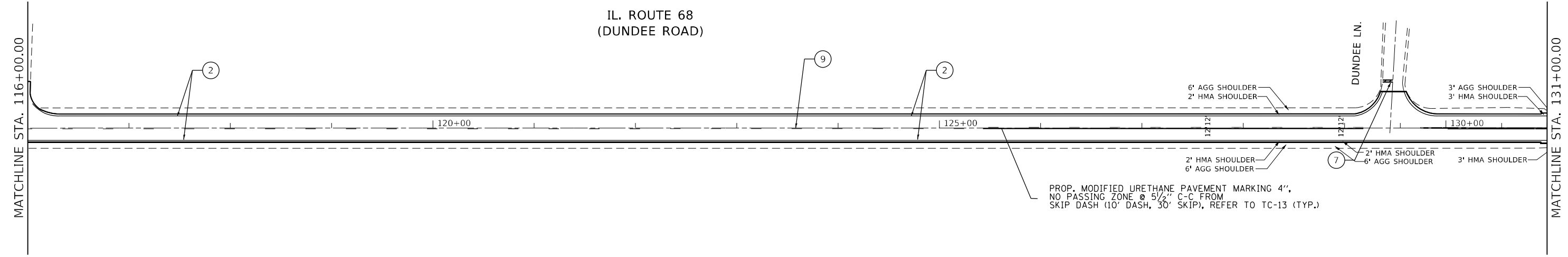
**TYPICAL SECTIONS
FROM IL-59 (NEW SUTTON RD) TO WEST OF QUENTIN RD**

SCALE: 1" = 50' SHEET 1 OF 1 SHEETS STA. TO STA.

F.A.P. RTE.	SECTION	COUNTY	TOTAL SHEETS	SHEET NO.
343	2021-041-CJS	COOK	22	4
ILLINOIS FED. AID PROJECT			CONTRACT NO. 62N64	



PAVEMENT MARKING LEGEND	
① PROP. MODIFIED URETHANE PAVEMENT MARKING 4", DOUBLE YELLOW @ 11" C-C (TYP.)	⑥ PROP. MODIFIED URETHANE PAVEMENT MARKING 12", DIAGONALS @ 45, REFER TO TC-13 (TYP.)
② PROP. MODIFIED URETHANE PAVEMENT MARKING 4", EDGE, WHITE - RIGHT OR YELLOW - LEFT (TYP.)	⑦ PROP. MODIFIED URETHANE PAVEMENT MARKING 24", STOPBAR, WHITE (TYP.)
③ PROP. MODIFIED URETHANE PAVEMENT MARKING 6", TURN LANE, WHITE (TYP.)	⑧ PROP. MODIFIED URETHANE PAVEMENT MARKING LETTERS AND SYMBOLS, WHITE (TYP.)
④ PROP. MODIFIED URETHANE PAVEMENT MARKING 6", DOTTED SKIP DASH @ 6' SKIP & 2' DASH, WHITE (TYP.)	⑨ PROP. MODIFIED URETHANE PAVEMENT MARKING 4", SKIP DASH @ 30' SKIP & 10' DASH (TYP.)
⑤ PROP. MODIFIED URETHANE PAVEMENT MARKING 6", CROSSWALK 2 @ 6' MIN. C-C, WHITE (TYP.)	⑩ PROP. MODIFIED URETHANE PAVEMENT MARKING 8", GORES, WHITE (TYP.)



MODEL: Default
 FILE: \\blmfe-pw-bentley.com\FW\DOT\Documents\DOT Office\Dir\rdet_1\Project\1142\1142\1142-1-arh-ban.dgn

USER NAME = diaza	DESIGNED -	REVISED -
PLOT SCALE = 100,0000' / in.	DRAWN -	REVISED -
PLOT DATE = 5/10/2022	CHECKED -	REVISED -
	DATE -	REVISED -

STATE OF ILLINOIS
DEPARTMENT OF TRANSPORTATION

ROADWAY PLAN
FROM IL-59 (NEW SUTTON RD) TO WEST OF QUENTIN RD
 SCALE: 1"=50' SHEET 4 OF 12 SHEETS STA. 101+00.00 TO STA. 131+00.00

F.A.P. RTE. 343	SECTION 2021-041-CIS	COUNTY COOK	TOTAL SHEETS 22	SHEET NO. 6
CONTRACT NO. 62N64			ILLINOIS FED. AID PROJECT	



MATCHLINE STA. 219+00.00

MATCHLINE STA. 234+00.00

IL. ROUTE 68
(DUNDEE ROAD)

DUNHEATH DR.

GUTHRIE DR.

PROP. MODIFIED URETHANE PAVEMENT MARKING 4",
NO PASSING ZONE @ 5 1/2" C-C FROM
SKIP DASH (10' DASH, 30' SKIP), REFER TO TC-13 (TYP.)

PAVEMENT MARKING LEGEND

- ① PROP. MODIFIED URETHANE PAVEMENT MARKING 4",
DOUBLE YELLOW @ 11" C-C (TYP.)
- ② PROP. MODIFIED URETHANE PAVEMENT MARKING 4",
EDGE , WHITE - RIGHT OR YELLOW - LEFT (TYP.)
- ③ PROP. MODIFIED URETHANE PAVEMENT MARKING 6",
TURN LANE, WHITE (TYP.)
- ④ PROP. MODIFIED URETHANE PAVEMENT MARKING 6",
DOTTED SKIP DASH @ 6' SKIP & 2' DASH, WHITE (TYP.)
- ⑤ PROP. MODIFIED URETHANE PAVEMENT MARKING 6",
CROSSWALK 2 @ 6' MIN. C-C, WHITE (TYP.)
- ⑥ PROP. MODIFIED URETHANE PAVEMENT MARKING 12",
DIAGONALS @ 45, REFER TO TC-13 (TYP.)
- ⑦ PROP. MODIFIED URETHANE PAVEMENT MARKING 24",
STOPBAR, WHITE (TYP.)
- ⑧ PROP. MODIFIED URETHANE PAVEMENT MARKING
LETTERS AND SYMBOLS, WHITE (TYP.)
- ⑨ PROP. MODIFIED URETHANE PAVEMENT MARKING 4",
SKIP DASH @ 30' SKIP & 10' DASH (TYP.)
- ⑩ PROP. MODIFIED URETHANE PAVEMENT MARKING 8",
GORES, WHITE (TYP.)

MATCHLINE STA. 234+00.00

MATCHLINE STA. 249+00.00

IL. ROUTE 68
(DUNDEE ROAD)

BEDINGTON DR.

PROP. MODIFIED URETHANE PAVEMENT MARKING 4",
NO PASSING ZONE @ 5 1/2" C-C FROM
SKIP DASH (10' DASH, 30' SKIP), REFER TO TC-13 (TYP.)

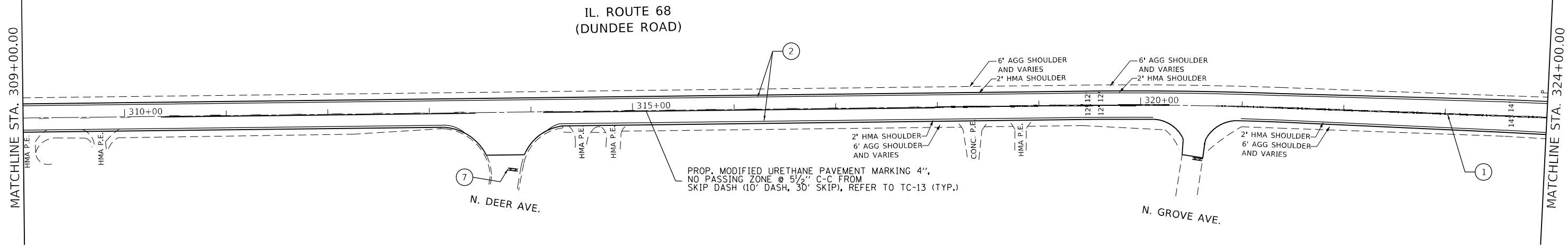
MODEL: Default
FILE NAME: p:\project\paw_bentley.com\p\illinois\Documents\DOT Office\Drawings\Project\1142\1142\1142-1-Sub-A-Plan.dgn

USER NAME = diaza	DESIGNED -	REVISED -
	DRAWN -	REVISED -
PLOT SCALE = 100,0000' / in.	CHECKED -	REVISED -
PLOT DATE = 5/10/2022	DATE -	REVISED -

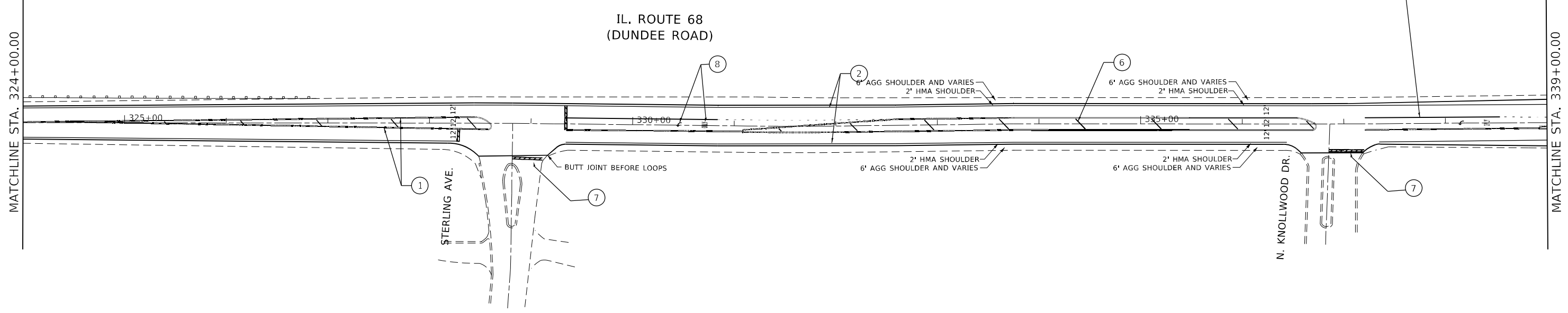
**STATE OF ILLINOIS
DEPARTMENT OF TRANSPORTATION**

ROADWAY PLAN
FROM IL-59 (NEW SUTTON RD) TO WEST OF QUENTIN RD
SCALE: 1"=50' SHEET 8 OF 12 SHEETS STA. 219+00.00 TO STA. 249+00.00

F.A.P. RTE. 343	SECTION 2021-041-CIS	COUNTY COOK	TOTAL SHEETS 22	SHEET NO. 10
CONTRACT NO. 62N64			ILLINOIS FED. AID PROJECT	



PAVEMENT MARKING LEGEND	
① PROP. MODIFIED URETHANE PAVEMENT MARKING 4", DOUBLE YELLOW @ 11" C-C (TYP.)	⑥ PROP. MODIFIED URETHANE PAVEMENT MARKING 12", DIAGONALS @ 45, REFER TO TC-13 (TYP.)
② PROP. MODIFIED URETHANE PAVEMENT MARKING 4", EDGE, WHITE - RIGHT OR YELLOW - LEFT (TYP.)	⑦ PROP. MODIFIED URETHANE PAVEMENT MARKING 24", STOPBAR, WHITE (TYP.)
③ PROP. MODIFIED URETHANE PAVEMENT MARKING 6", TURN LANE, WHITE (TYP.)	⑧ PROP. MODIFIED URETHANE PAVEMENT MARKING LETTERS AND SYMBOLS, WHITE (TYP.)
④ PROP. MODIFIED URETHANE PAVEMENT MARKING 6", DOTTED SKIP DASH @ 6' SKIP & 2' DASH, WHITE (TYP.)	⑨ PROP. MODIFIED URETHANE PAVEMENT MARKING 4", SKIP DASH @ 30' SKIP & 10' DASH (TYP.)
⑤ PROP. MODIFIED URETHANE PAVEMENT MARKING 6", CROSSWALK 2 @ 6' MIN. C-C, WHITE (TYP.)	⑩ PROP. MODIFIED URETHANE PAVEMENT MARKING 8", GOES, WHITE (TYP.)



MODEL: Default
 FILE: \\blmfc-pw-bentley.com\PW\DOT\Documents\DOT Office\Dir\rdet_1\Project\1142\1142\1142-1-Sub-A-Plan.dgn

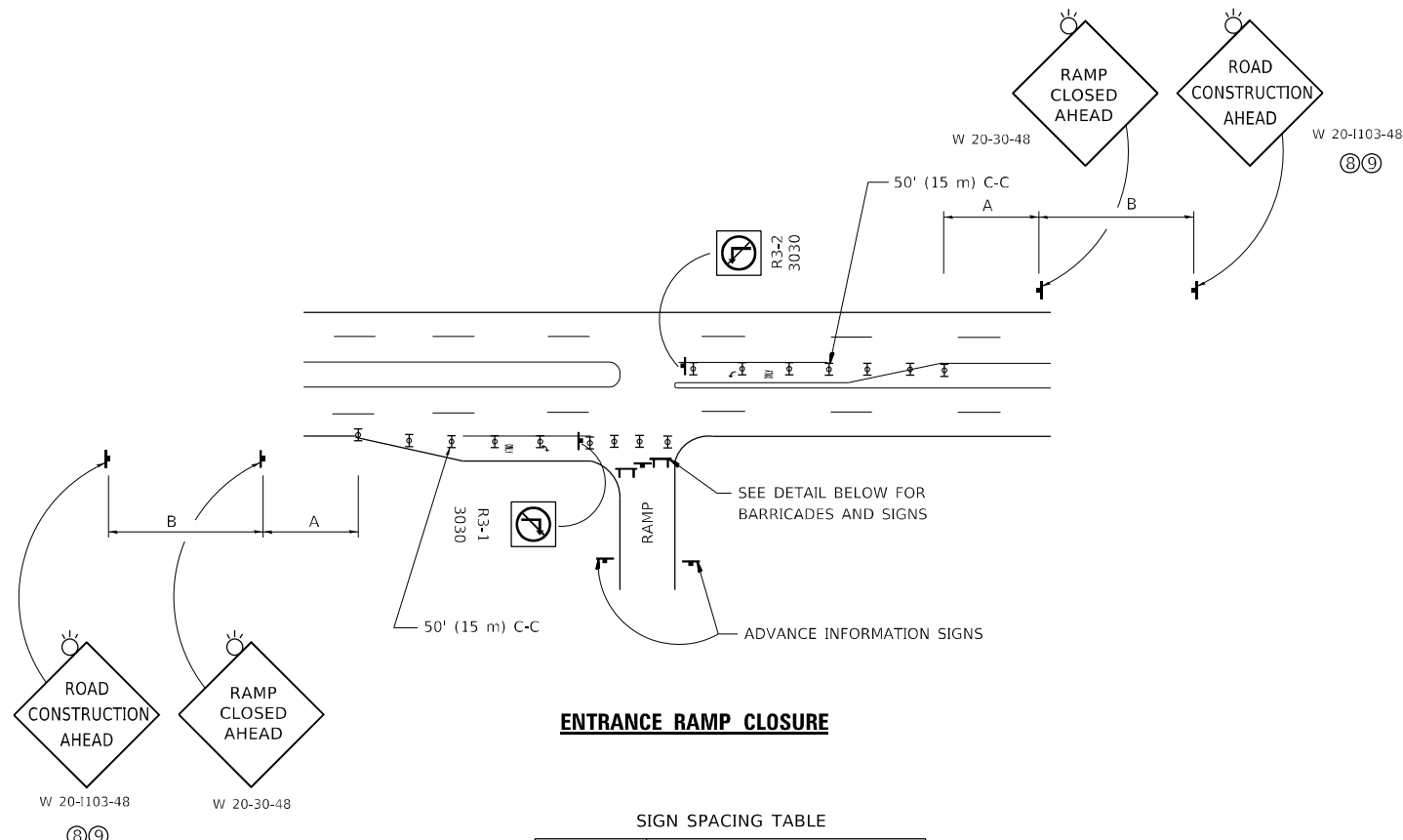
USER NAME = diaza	DESIGNED -	REVISED -
PLOT SCALE = 100,0000' / in.	DRAWN -	REVISED -
PLOT DATE = 5/10/2022	CHECKED -	REVISED -
	DATE -	REVISED -

**STATE OF ILLINOIS
DEPARTMENT OF TRANSPORTATION**

ROADWAY PLAN
FROM IL-59 (NEW SUTTON RD) TO WEST OF QUENTIN RD

SCALE: 1"=50' SHEET 11 OF 12 SHEETS STA. 309+00.00 TO STA. 339+00.00

F.A.P. RTE. 343	SECTION 2021-041-CIS	COUNTY COOK	TOTAL SHEETS 22	SHEET NO. 13
CONTRACT NO. 62N64			ILLINOIS FED. AID PROJECT	

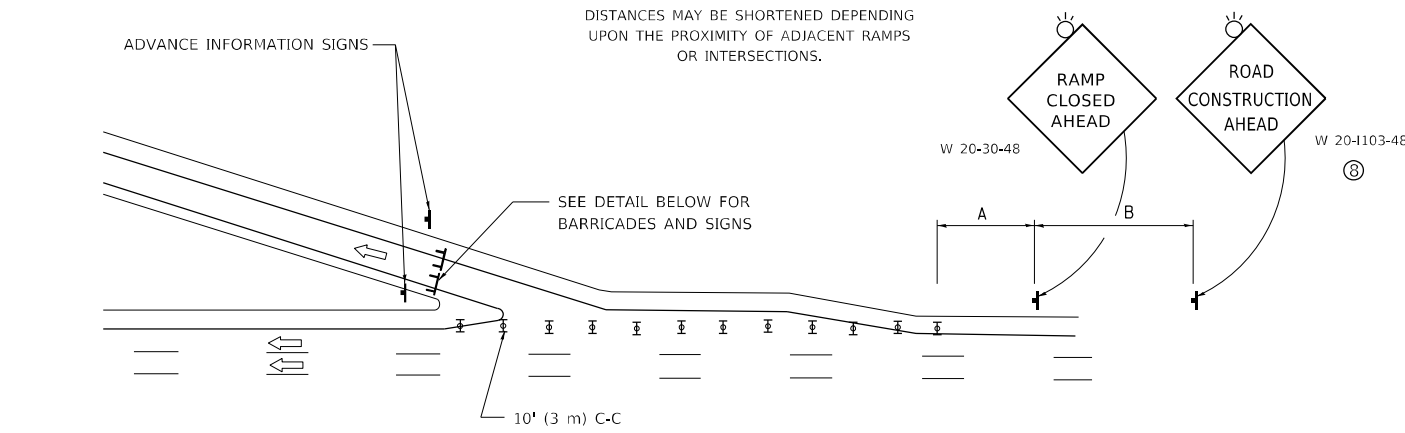


ENTRANCE RAMP CLOSURE

SIGN SPACING TABLE

FACILITY	DISTANCE BETWEEN SIGNS	
	A	B
EXPRESSWAY >24 HOURS	1000' (300 m)	1500' (450 m)
EXPRESSWAY ≤24 HOURS	500' (150 m)	500' (150 m)
ARTERIAL 55 MPH	500' (150 m)	500' (150 m)
ARTERIAL 50-45 MPH	350' (100 m)	350' (100 m)
ARTERIAL <45 MPH	200' (60 m)	200' (60 m)

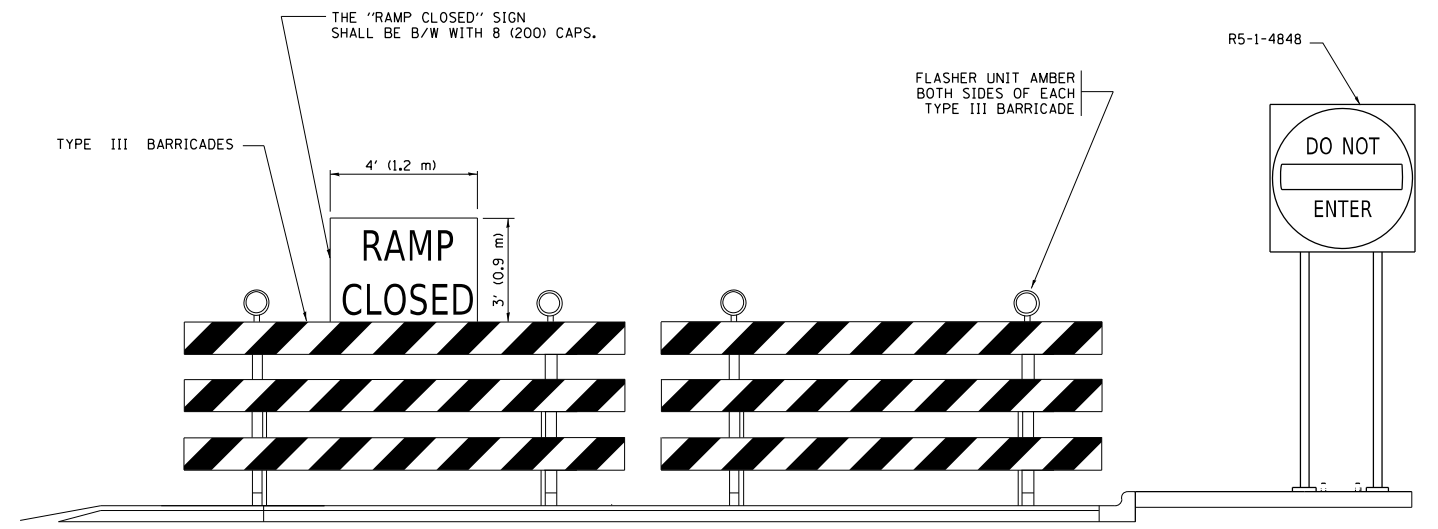
DISTANCES MAY BE SHORTENED DEPENDING UPON THE PROXIMITY OF ADJACENT RAMPS OR INTERSECTIONS.



EXIT RAMP CLOSURE

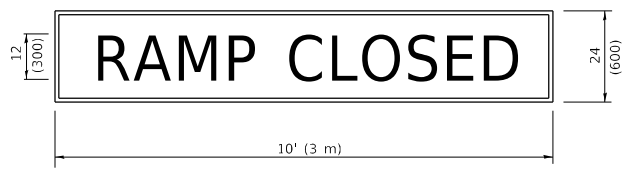
SYMBOLS

- ▬ TYPE II BARRICADE OR DRUM
- ⌈ TYPE III BARRICADE WITH 2 FLASHING LIGHTS



DETAIL FOR REQUIRED BARRICADES & SIGNS

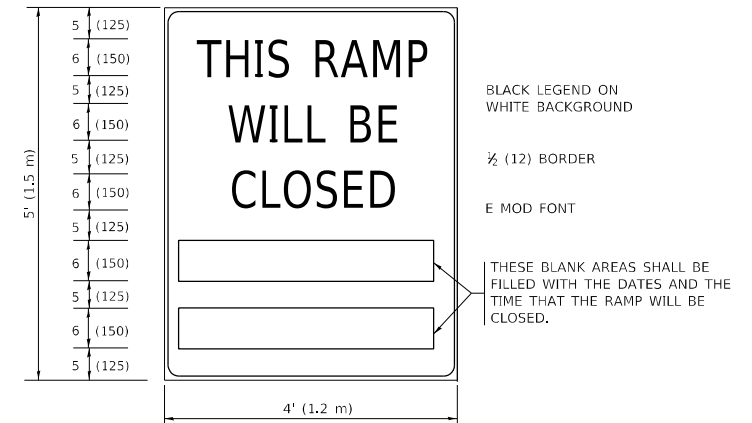
RAMP CLOSURE ADVANCE WARNING SIGN



BLACK LEGEND ON ORANGE BACKGROUND MOUNTED DIAGONALLY
E MOD FONT
1 (25) BORDER

THESE SIGNS ARE REQUIRED ON ALL THE EXIT GUIDE SIGNS FOR EXIT RAMPS THAT WILL BE CLOSED FOR MORE THAN FOUR (4) CONSECUTIVE DAYS.

RAMP CLOSURE ADVANCE INFORMATION SIGN



BLACK LEGEND ON WHITE BACKGROUND

1/2 (12) BORDER

E MOD FONT

THESE BLANK AREAS SHALL BE FILLED WITH THE DATES AND THE TIME THAT THE RAMP WILL BE CLOSED.

THESE SIGNS ARE REQUIRED ON BOTH SIDES OF THE RAMP, MINIMUM OF 1 WEEK IN ADVANCE OF THE CLOSURE.

THESE SIGNS SHALL BE FABRICATED AND PAID FOR ACCORDING TO THE TEMPORARY INFORMATION SIGNING SPECIAL PROVISION

GENERAL NOTES:

- ① CONES MAY BE SUBSTITUTED FOR DRUMS OR TYPE II BARRICADES DURING DAY OPERATIONS. CONES SHALL BE A MINIMUM OF 28 (700) HIGH.
- ② VERTICAL BARRICADES SHALL NOT BE USED FOR RAMP CLOSURES.
- ③ A FLAGGER SHALL BE POSITIONED AT EACH CLOSED RAMP THAT IS OPEN TO CONSTRUCTION VEHICLES, PRECEDED BY A W20-7 FLAGGER WARNING SIGN.
- ④ ALL ROUTE MARKERS AND TRAILBLAZER ASSEMBLIES WHICH DIRECT MOTORISTS TO A CLOSED ENTRANCE RAMP SHALL BE COVERED WHEN THE RAMP IS CLOSED FOR MORE THAN FOUR (4) DAYS.
- ⑤ THE SIGNING AND BARRICADING WHICH IS REQUIRED BY THIS DETAIL SHALL BE INCLUDED IN THE COST OF TRAFFIC CONTROL AND PROTECTION (EXPRESSWAYS).
- ⑥ AUTHORIZATION FROM THE DISTRICT'S BUREAU OF TRAFFIC IS REQUIRED FOR ALL RAMP CLOSURES.
- ⑦ THE RAMP CLOSURE ADVANCE INFORMATION SIGNS SHALL BE ERECTED IF THE CLOSURE TIME EXCEEDS TWENTY-FOUR (24) HOURS. ADDITIONAL ADVANCE WARNING SIGNS ON EXIT GUIDE SIGNING WILL BE REQUIRED FOR EXIT RAMP CLOSURES THAT EXCEED FOUR (4) DAYS IN LENGTH
- ⑧ ROAD CONSTRUCTION AHEAD SIGNS MAY BE OMITTED WHEN THIS DETAIL IS USED IN CONJUNCTION WITH OTHER TRAFFIC CONTROL THAT ALREADY INCLUDES A ROAD CONSTRUCTION AHEAD SIGN.
- ⑨ ARTERIAL ROAD CONSTRUCTION AHEAD SIGNS SHALL BE INSTALLED ON THE LEFT SIDE OF TRAFFIC IF THE MEDIAN IS MORE THAN 10 FT WIDE.

ALL DIMENSIONS ARE IN INCHES (MILLIMETERS) UNLESS OTHERWISE SHOWN.

MODEL: Default
FILE: \\nafe\p\project\aw\benefit.com\PIV\DOT\Documents\DOT\Office\Dir\ref: \\project\1142\1\CAD\data\Design\BdfStc.dgn

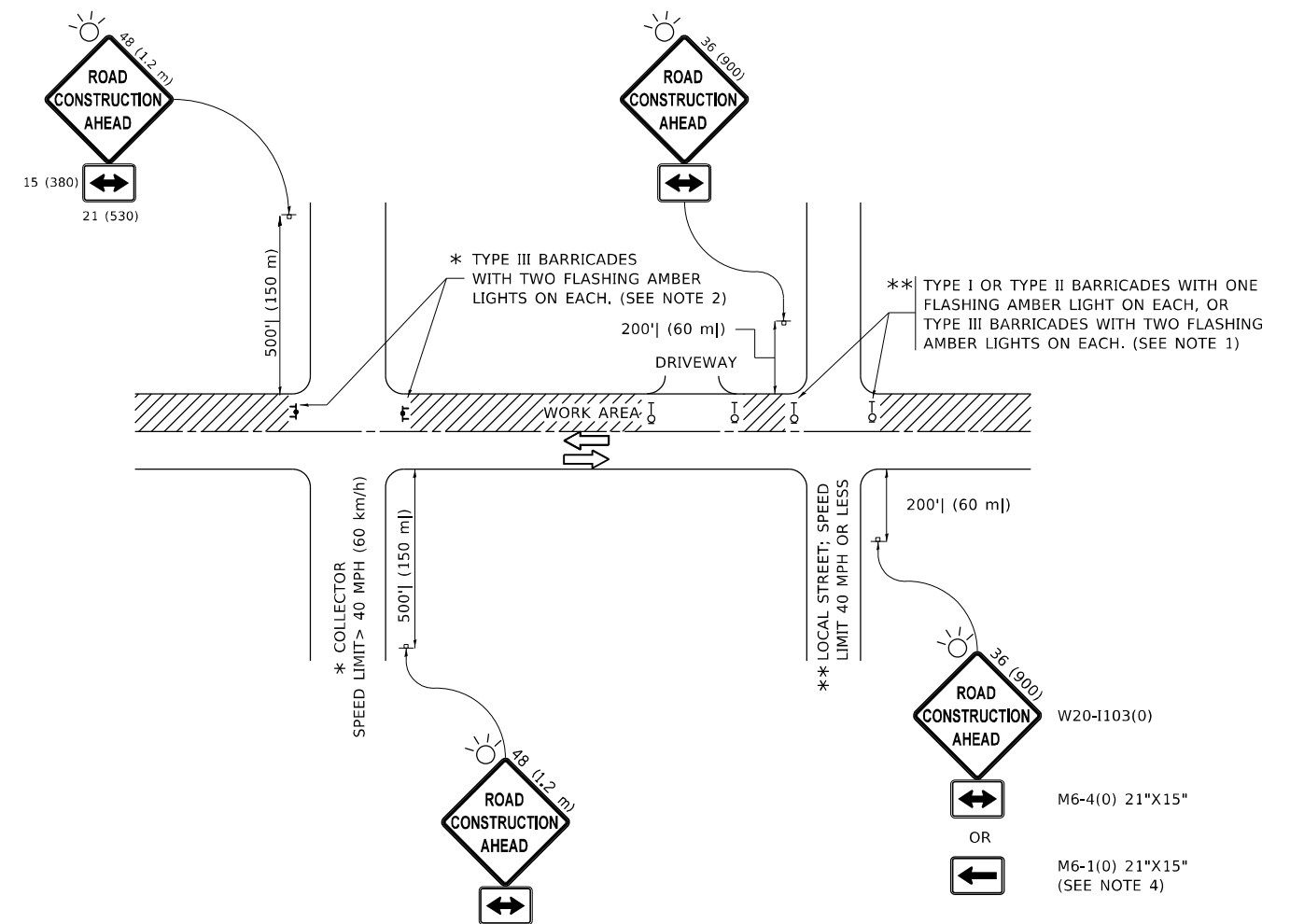
USER NAME = diaza	DESIGNED - D.W.S.	REVISED - S.P.B._01-07
PLOT SCALE = 100,0000' / in.	DRAWN -	REVISED - S.P.B._12-09
PLOT DATE = 5/10/2022	CHECKED -	REVISED - M.D._06-13
	DATE - 02-83	REVISED - M.D._01-18

**STATE OF ILLINOIS
DEPARTMENT OF TRANSPORTATION**

**ENTRANCE_AND_EXIT_RAMP
CLOSURE_DETAILS**

SCALE: NONE SHEET 1 OF 1 SHEETS STA. TO STA.

F.A.P. RTE. 343	SECTION 2021-041-CIS	COUNTY COOK	TOTAL SHEETS 22	SHEET NO. 15
TC-08		CONTRACT NO. 62N64		
ILLINOIS		FED. AID PROJECT		



NOTES:

1. SIDE ROAD WITH A SPEED LIMIT OF 40 MPH (60 km/h) OR LESS AS SHOWN ON THE DRAWING AND AS DIRECTED BY THE ENGINEER:
 - a) ONE "ROAD CONSTRUCTION AHEAD" SIGN 36 x 36 (900x900) WITH A FLASHER MOUNTED ON IT APPROXIMATELY 200' (60 m) IN ADVANCE OF THE MAIN ROUTE.
 - b) THE CLOSED PORTION OF THE MAIN ROUTE SHALL BE PROTECTED BY BLOCKING WITH TYPE I, TYPE II OR TYPE III BARRICADES, 1/3 OF THE CROSS SECTION OF THE CLOSED PORTION.
2. SIDE ROAD WITH A SPEED LIMIT GREATER THAN 40 MPH (60 km/h) AS SHOWN ON THE DRAWING AND AS DIRECTED BY THE ENGINEER:
 - a) ONE "ROAD CONSTRUCTION AHEAD" SIGN 48 x 48 (1.2 m x 1.2 m) WITH A FLASHER MOUNTED ON IT APPROXIMATELY 500' (150 m) IN ADVANCE OF THE MAIN ROUTE.
 - b) BLOCKING WITH TYPE III BARRICADES, 1/2 OF THE CROSS SECTION OF THE CLOSED PORTION.
3. CONES MAY BE SUBSTITUTED FOR BARRICADES OR DRUMS AT HALF THE SPACING DURING DAY OPERATIONS. CONES SHALL BE A MINIMUM OF 28 (710) IN HEIGHT.
4. SIGNING AND THE WORK ZONE, A SINGLE HEADED ARROW (M6-1) SHALL BE USED IN LIEU OF THE DOUBLE HEADED ARROW (M6-4).
5. WHEN WORK IS BEING PERFORMED ON A SIDE ROAD OR DRIVEWAY, FOLLOW THE APPLICABLE STANDARD(S). THE DIRECTIONAL ARROW (M6-1 OR M6-4) SHALL BE COVERED OR REMOVED WHEN NO LONGER CONSISTENT WITH THE TRAFFIC CONTROL SET-UP.
6. ADVANCE WARNING SIGNS ARE TO BE OMITTED ON DRIVEWAYS UNLESS OTHERWISE SPECIFIED IN THE PLANS OR BY THE ENGINEER.
7. THE TRAFFIC CONTROL AND PROTECTION FOR SIDE ROADS, INTERSECTIONS, AND DRIVEWAYS SHALL BE INCLUDED IN THE COST OF SPECIFIED TRAFFIC CONTROL STANDARDS OR ITEMS.

All dimensions are in inches (millimeters) unless otherwise shown.

MODEL: Default
 FILE NAME: p:\ultra-caw-beach\paw.com\PIV\DOT\Documents\DOT Office\Dir\rdet -\Project\101142\101142\0000\0000\Design\BATS\Std.dgn

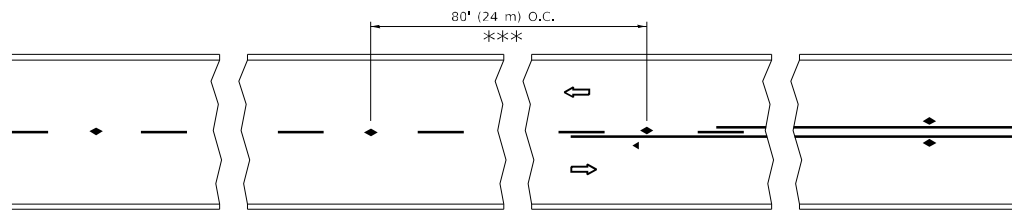
USER NAME = diaza	DESIGNED - L.H.A.	REVISED - A. HOUSEH 10-15-96
	DRAWN -	REVISED - T. RAMMACHER 01-06-00
PLOT SCALE = 100,0000' / in.	CHECKED -	REVISED - A. SCHUETZE 07-01-13
PLOT DATE = 5/10/2022	DATE - 06-89	REVISED - A. SCHUETZE 09-15-16

**STATE OF ILLINOIS
DEPARTMENT OF TRANSPORTATION**

**TRAFFIC CONTROL AND PROTECTION FOR
SIDE ROADS, INTERSECTIONS, AND DRIVEWAYS**

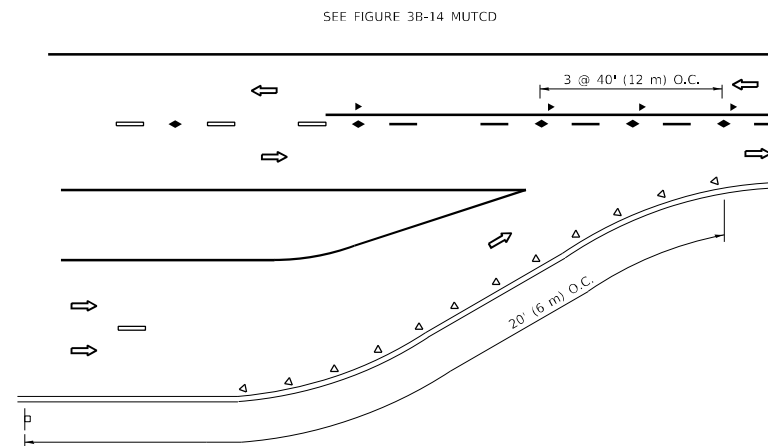
SCALE: NONE SHEET 1 OF 1 SHEETS STA. TO STA.

F.A.P. RTE.	SECTION	COUNTY	TOTAL SHEETS	SHEET NO.
343	2021-041-CIS	COOK	22	16
TC-10			CONTRACT NO. 62N64	
ILLINOIS FED. AID PROJECT				

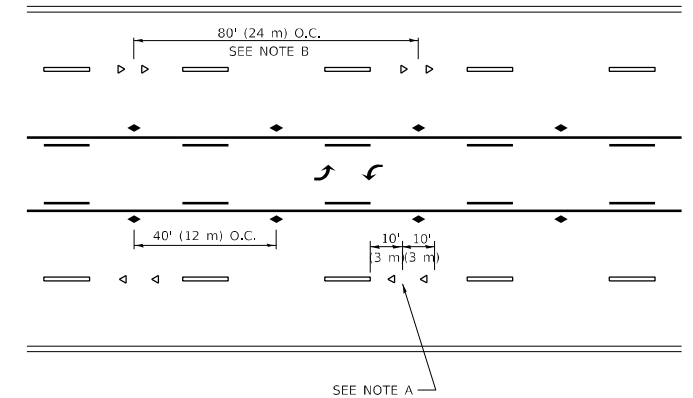


*** REDUCE TO 40' (12 m) O.C. ON CURVES WITH POSTED OR ADVISORY SPEED 45 M.P.H. (70 km/h) OR LESS.

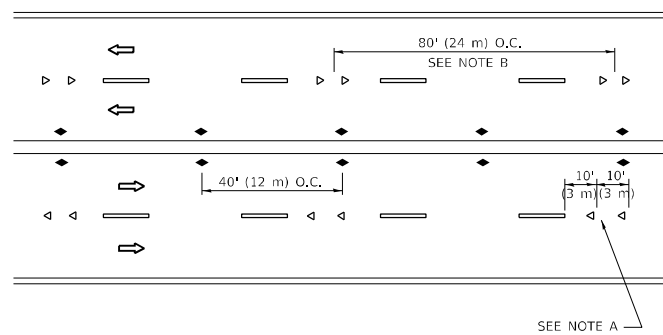
TWO-LANE/TWO-WAY



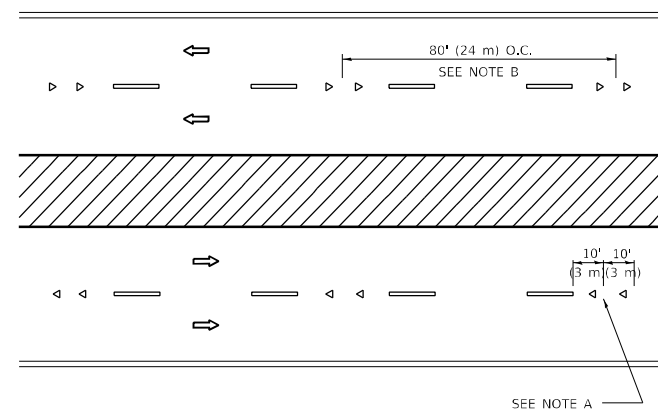
LANE REDUCTION TRANSITION



TWO-WAY LEFT TURN



MULTI-LANE/UNDIVIDED



MULTI-LANE/DIVIDED

GENERAL NOTES

1. MARKERS USED WITH DASHED LINES SHALL BE CENTERED IN THE GAP BETWEEN SEGMENTS.
2. MARKERS USED ADJACENT TO SOLID LINES SHALL BE OFFSET 2 TO 3 (50 TO 75) TOWARD TRAFFIC AS SHOWN.
3. MARKERS THROUGH TANGENTS LESS THAN 500' (150 m) IN LENGTH BETWEEN CURVES SHALL BE INSTALLED AT THE LESSER OF THE TWO CURVE SPACINGS.
4. MARKERS ARE TO BE USED ADJACENT TO BOTH SOLID WHITE LINES IN DUAL LEFT TURN LANES

SYMBOLS

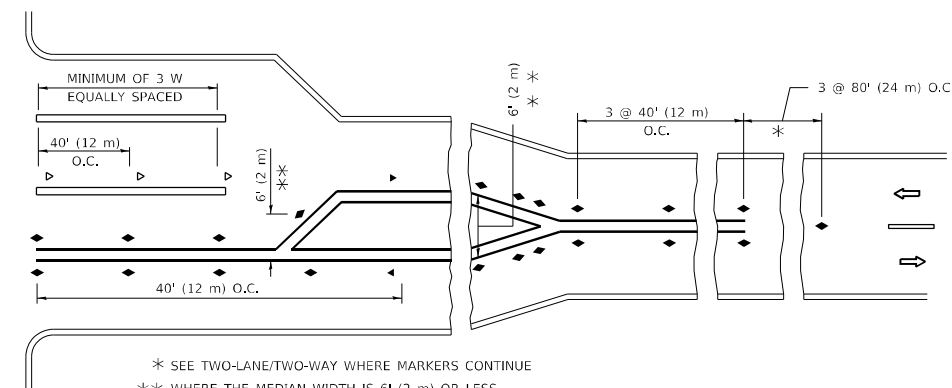
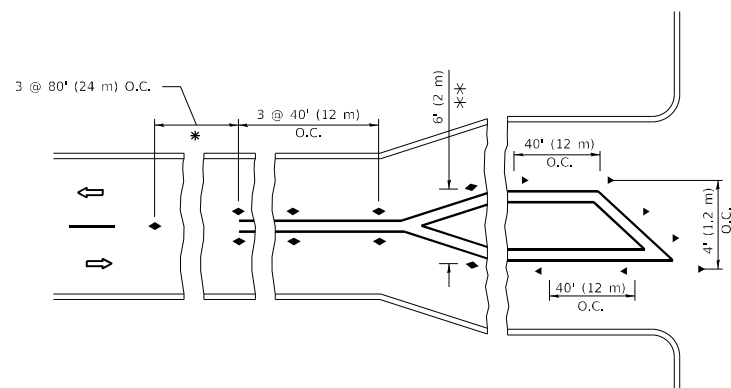
- YELLOW STRIPE
- WHITE STRIPE
- ◀ ONE-WAY AMBER MARKER
- ◀ ONE-WAY CRYSTAL MARKER (W/O)
- ◆ TWO-WAY AMBER MARKER

LANE MARKER NOTES

- A. USE DOUBLE LANE LINE MARKERS SPACED AS SHOWN.
- B. REDUCE TO 40' (12 m) O.C. ON CURVES WHERE ADVISORY SPEEDS ARE 10 M.P.H (20 km/h) LOWER THAN POSTED SPEEDS.

DESIGN NOTES

1. DOUBLE LANE LINE MARKERS SHALL BE USED UNLESS SPECIFIED OTHERWISE.
2. EXCEPT AS SHOWN ON THE LANE REDUCTION TRANSITION AND FREEWAY EXIT RAMP DETAIL, MARKERS ARE NOT TO BE SPECIFIED ON RIGHT EDGE LINES.
3. THE EXACT MARKER LIMITS, SPACING, AND COLOR SHALL BE INCLUDED IN THE PLANS WHEN STANDARD SPECIFICATIONS ARE NOT BEING USED.
4. MARKERS SHOULD NOT BE USED ALONGSIDE CURBS EXCEPT FOR EXTREMELY SHORT SECTIONS OF CURBS WHERE NOT MORE THAN TWO MARKERS WOULD BE INVOLVED.



TURN LANES

* SEE TWO-LANE/TWO-WAY WHERE MARKERS CONTINUE
 ** WHERE THE MEDIAN WIDTH IS 6' (2 m) OR LESS USE TWO-WAY MARKERS.

All dimensions are in inches (millimeters) unless otherwise shown.

MODEL: Default
 FILE NAME: p:\project-aw-beachway.com\PIV\DOT\Documents\DOT Office\Dir\rdet_1\Project\101142\ICAD\DrawData\Design\BdfStEd.dgn

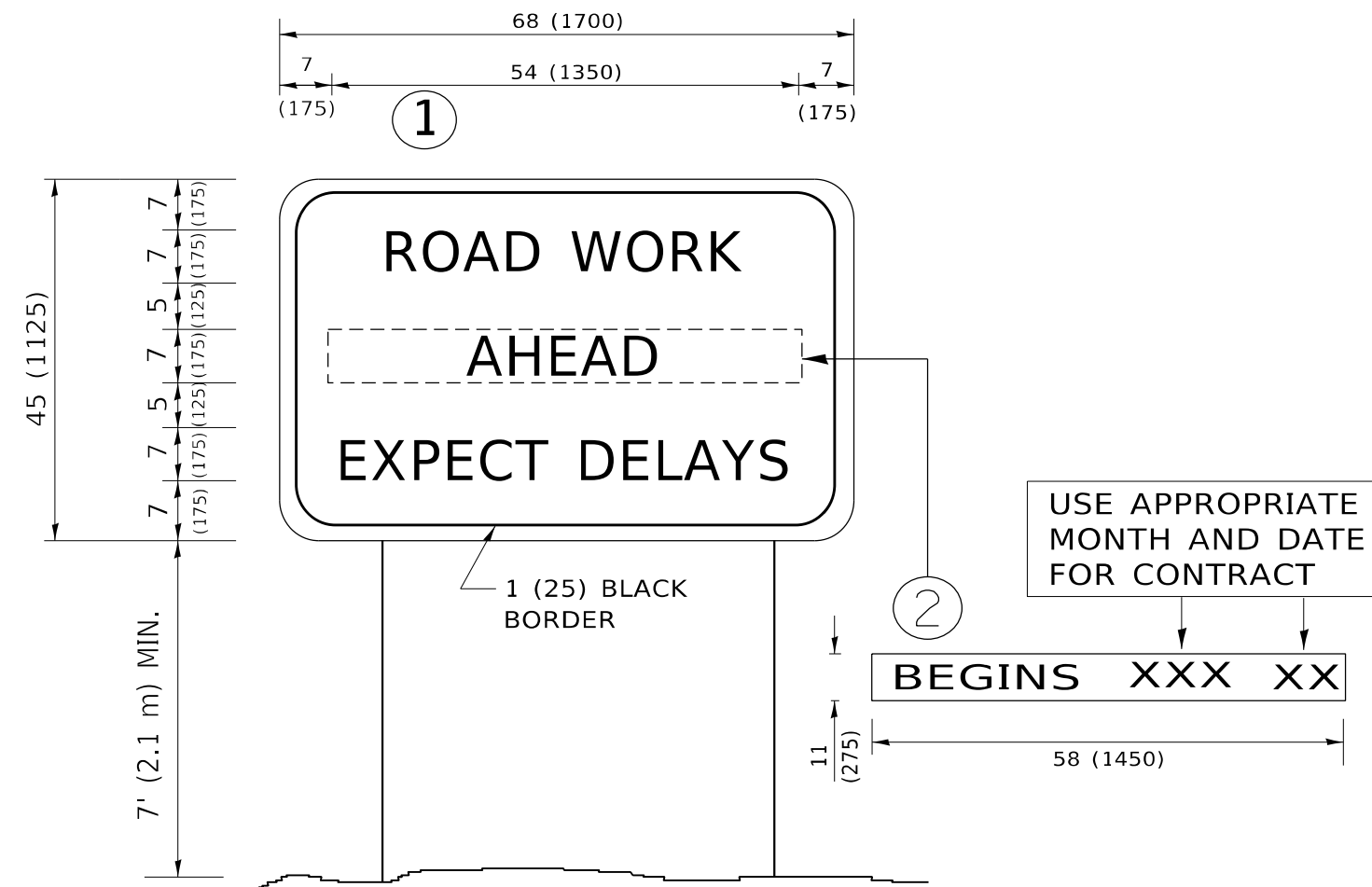
USER NAME = diazla	DESIGNED -	REVISED - T. RAMMACHER 03-12-99
PLOT SCALE = 100,0000' / in.	DRAWN -	REVISED - T. RAMMACHER 01-06-00
PLOT DATE = 5/10/2022	CHECKED -	REVISED - C. JUCIUS 09-09-09
	DATE -	REVISED - C. JUCIUS 07-01-13

**STATE OF ILLINOIS
 DEPARTMENT OF TRANSPORTATION**

**TYPICAL APPLICATIONS
 RAISED REFLECTIVE PAVEMENT MARKERS (SNOW-PLOW RESISTANT)**

SCALE: NONE SHEET 1 OF 1 SHEETS STA. TO STA.

F.A.P. RTE. 343	SECTION 2021-041-CIS	COUNTY COOK	TOTAL SHEETS 22	SHEET NO. 17
TC-11		CONTRACT NO. 62N64		
ILLINOIS FED. AID PROJECT				



NOTES:

1. USE BLACK LETTERING ON ORANGE BACKGROUND.
2. ERECT SIGNS IN ADVANCE OF THE LOCATION FOR THE "ROAD CONSTRUCTION AHEAD" SIGN AT LOCATIONS AS DIRECTED BY THE ENGINEER.
3. ERECT SIGN ① WITH INSTALLED PANEL ② ONE WEEK PRIOR TO THE START OF CONSTRUCTION.
4. REMOVE PANEL ② SOON AFTER THE START OF CONSTRUCTION.
5. SEE SPECIAL PROVISION FOR "TEMPORARY INFORMATION SIGNING" FOR ADDITIONAL INFORMATION.
6. ONE SIGN ASSEMBLY EQUALS 25.70 SQ. FT. (2.3 SQ. M.)
7. SHALL BE PAID FOR AS TEMPORARY INFORMATION SIGNING.

ALL DIMENSIONS ARE IN INCHES (MILLIMETERS) UNLESS OTHERWISE SHOWN.

MODEL: Default
 FILE: \\nafe-pw-bentley.com\PW\DOT\Documents\DOT Office\District 11\221\COB\data\Design\BRTStu.dgn

USER NAME = diaza	DESIGNED -	REVISED - R. MIRS 09-15-97
	DRAWN -	REVISED - R. MIRS 12-11-97
PLOT SCALE = 100,0000 ' / in.	CHECKED -	REVISED - T. RAMMACHER 02-02-99
PLOT DATE = 5/10/2022	DATE -	REVISED - C. JUCIUS 01-31-07

**STATE OF ILLINOIS
DEPARTMENT OF TRANSPORTATION**

**ARTERIAL ROAD
INFORMATION SIGN**

SCALE: NONE SHEET 1 OF 1 SHEETS STA. TO STA.

F.A.P. RTE.	SECTION	COUNTY	TOTAL SHEETS	SHEET NO.
343	2021-041-CIS	COOK	22	21
TC-22			CONTRACT NO. 62N64	
ILLINOIS FED. AID PROJECT				

