

STATE OF ILLINOIS  
DEPARTMENT OF TRANSPORTATION

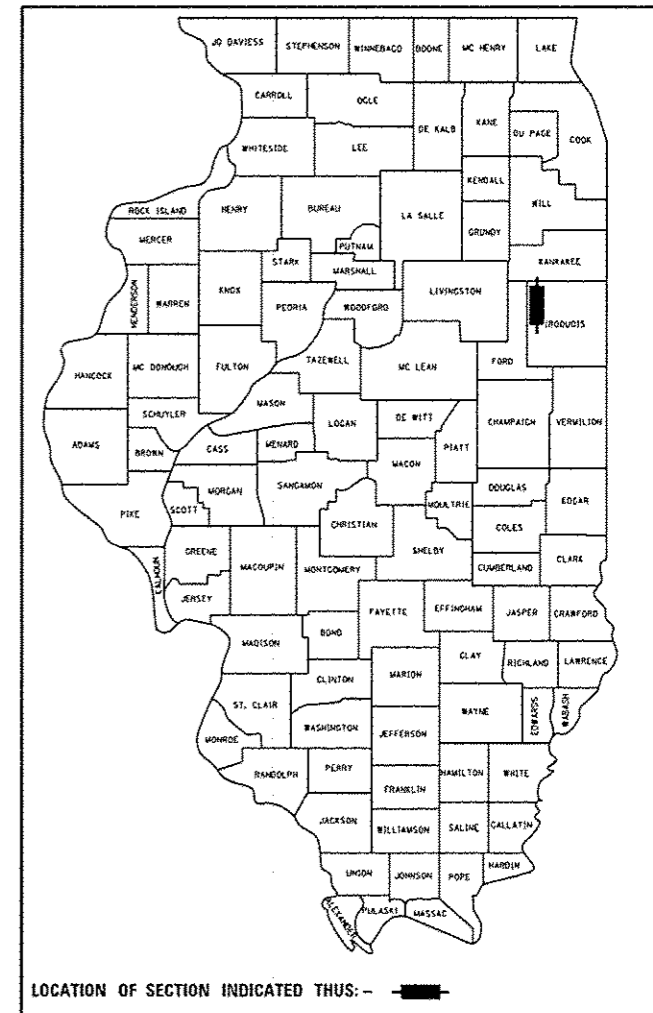
**PROPOSED  
HIGHWAY PLANS**

F.A.I. ROUTE 57 (I-57)  
SECTION (46, 38-1)C  
PROJECT ACNHPP-0057(325)  
PIPE CULVERT REPLACEMENT  
IROQUOIS COUNTY

C-93-094-16

F.A.I. RTE.	SECTION	COUNTY	TOTAL SHEETS	SHEET NO.
57	46, 38-1C	IROQUOIS	25	1
ILLINOIS			CONTRACT NO. 66F54	

D-93-048-16



RURAL INTERSTATE  
FAI 57 (I-57)  
2015

ADT	15900
P. V.	63.99%
S. U.	7.08%
M. U.	28.93%

STATE OF ILLINOIS  
DEPARTMENT OF TRANSPORTATION

SUBMITTED June 3 2016  
Paul Coette, P.E.  
REGIONAL ENGINEER  
Matthew M. Adams, P.E.  
ENGINEER OF DESIGN AND ENVIRONMENT  
Paul Colette  
DIRECTOR OF PROGRAM DEVELOPMENT

PRINTED BY THE AUTHORITY  
OF THE STATE OF ILLINOIS

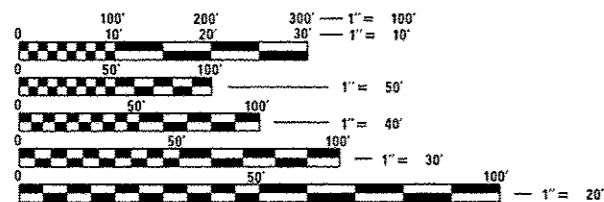
**INDEX OF SHEETS**

1. COVER SHEET
2. GENERAL NOTES
- 3 - 6. SUMMARY OF QUANTITIES
- 7 - 8. TYPICAL SECTIONS
9. PLAN VIEW
10. TRAFFIC CONTROL AND PROTECTION, STANDARD 701402 (SPECIAL)
- 11 - 12. STAGING
13. TEMPORARY CONCRETE BARRIER DETAILS
14. TYPICAL PAVEMENT MARKING
- 15 - 16. CLASS A PATCHING DETAILS
- 17 - 18. CLASS B PATCHING DETAILS
- 19 - 21. DRAINAGE STRUCTURE NO. 1
22. CONCRETE HEADWALL DETAILS
- 23 - 25. CROSS SECTIONS

**STANDARDS**

- |           |  |
|-----------|--|
| 000001-06 | STANDARD SYMBOLS, ABBREVIATIONS AND PATTERNS                                   |
| 001001-02 | AREAS OF REINFORCEMENT BARS  |
| 001006    | DECIMAL OF AN INCH AND OF A FOOT   |
| 280001-07 | TEMPORARY EROSION CONTROL SYSTEMS  |
| 285001-02 | FABRIC FORMED CONCRETE REVETMENT MATS  |
| 420001-08 | PAVEMENT JOINTS  |
| 420701-03 | PAVEMENT WELDED WIRE REINFORCEMENT   |
| 421001-03 | BAR REINFORCEMENT FOR CRC PAVEMENT   |
| 482006-03 | HMA SHOULDER ADJACENT TO RIGID PAVEMENT  |
| 701101-05 | OFF-ROAD OPERATIONS, MULTILANE, 15' (4.5 m) TO 24' (600 mm) FROM PAVEMENT EDGE |
| 701106-02 | OFF-ROAD OPERATIONS, MULTILANE, MORE THAN 15' (4.5 m) AWAY                     |
| 701402-11 | LANE CLOSURE, FREEWAY/EXPRESSWAY, WITH BARRIER                                 |
| 701406-10 | LANE CLOSURE, FREEWAY/EXPRESSWAY, DAY OPERATIONS ONLY                          |
| 701426-08 | LANE CLOSURE, MULTILANE INTERMITTENT OR MOVING OPERATION, FOR SPEEDS ≥ 45 MPH  |
| 701428-01 | TRAFFIC CONTROL, SETUP AND REMOVAL, FREEWAY/EXPRESSWAY                         |
| 701901-05 | TRAFFIC CONTROL DEVICES  |
| 704001-08 | TEMPORARY CONCRETE BARRIER   |

**PROJECT LOCATION**  
1.40 MILES SOUTH OF CHEBANSE INTERCHANGE  
M.M. +/-300.72 (STA. 800+80)

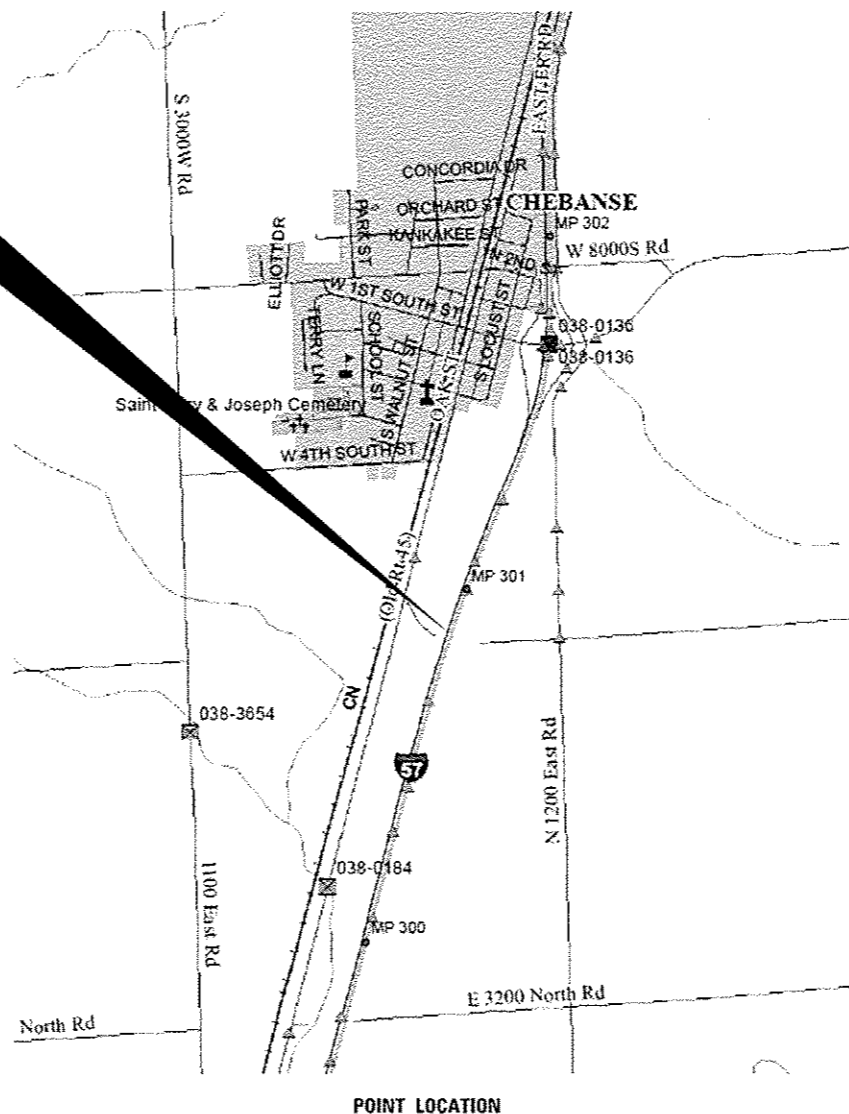


FULL SIZE PLANS HAVE BEEN PREPARED USING STANDARD ENGINEERING SCALES. REDUCED SIZED PLANS WILL NOT CONFORM TO STANDARD SCALES. IN MAKING MEASUREMENTS ON REDUCED PLANS, THE ABOVE SCALES MAY BE USED.

J.U.L.I.E.  
JOINT UTILITY LOCATION INFORMATION FOR EXCAVATION  
1-800-892-0123  
OR 811

DISTRICT 3 NO. (815) 434-6131  
PROJECT ENGINEER: JOE KANNEL, P.E.  
UNIT CHIEF: RON WOODSHANK

CONTRACT NO. 66F54



POINT LOCATION

GENERAL NOTES

BEFORE ORDERING PIPE CULVERTS OR PIPE DRAINS, THE CONTRACTOR SHALL CONSULT THE ENGINEER FOR EXACT LENGTHS.

THE ENGINEER WILL BE THE SOLE JUDGE CONCERNING CURING TIME FOR THE VARIOUS HMA SHOULDER LIFTS.

FOR STABILIZATION, ALL TYPE III BARRICADES WILL REQUIRE A MINIMUM OF FOUR SAND BAGS PER BARRICADE.

SEEDING WILL NOT BE PERMITTED AT ANY TIME WHEN THE GROUND IS FROZEN, WET, OR IN AN UNTILLABLE CONDITION. LOCATIONS TO BE SEEDED WILL BE DETERMINED BY THE ENGINEER.

THE FINISHED EARTHWORK SHALL HAVE A VEGETATION SUSTAINING SOIL COVERING THE TOP FOUR INCHES ( 100 MILLIMETERS) IN AREAS TO BE SEEDED OR SODDED. THE VEGETATION SUSTAINING SOIL REQUIRED WILL NOT BE PAID FOR SEPARATELY BUT WILL BE INCLUDED IN THE COST OF "FURNISHED EXCAVATION".

ON EXISTING PAVEMENT WHICH MAY BE SUPERELEVATED, THE NEW HMA PAVEMENT SHALL BE BUILT WITH THE SAME SUPERELEVATION UNLESS NEW SUPERELEVATION RATES ARE GIVEN ON THE PLANS.

ALL ELEVATIONS REFERRING TO U. S. G. S. MEAN SEA LEVEL DATUM.

ABANDONED UNDERGROUND UTILITIES THAT CONFLICT WITH CONSTRUCTION SHALL BE DISPOSED OF OUTSIDE THE LIMITS OF THE RIGHT OF WAY ACCORDING TO ARTICLE 202.03 OF THE STANDARD SPECIFICATIONS AND AS DIRECTED BY THE ENGINEER. THIS WORK WILL NOT BE PAID FOR SEPARATELY, BUT WILL BE INCLUDED IN THE COST OF EARTH EXCAVATION.

TEMPORARY RUMBLE STRIPS AND LANE DROP ARROWS AS SHOWN IN STANDARD 701400 ARE NOT REQUIRED FOR USE WITH DAYTIME LANE CLOSURES THAT DO NOT REQUIRE TEMPORARY CONCRETE BARRIER.

ANY REFERENCE TO A STANDARD IN THESE PLANS SHALL BE INTERPRETED TO MEAN THE EDITION AS INDICATED BY THE SUBNUMBER SHOWN IN THE LIST OF STANDARDS OR THE COPY INCLUDED IN THESE PLANS.

THE FOLLOWING RATES OF APPLICATION HAVE BEEN USED IN CALCULATING PLAN QUANTITIES:

GRANULAR MATERIALS	2.05	TONS / CU YD
HMA RESURFACING	112	LBS / SQ YD / IN
AGGREGATE DITCH CHECKS	5	TONS AGGREGATE

THE WORK REQUIRED TO CONNECT NEW OR EXISTING PIPE CULVERTS TO AN EXISTING OR NEW DRAINAGE WILL NOT BE PAID FOR SEPARATELY, BUT WILL BE CONSIDERED AS INCLUDED IN THE CONTRACT UNIT PRICE BID FOR THE DRAINAGE ITEMS.

THE CONTRACTOR SHALL CONTACT JULIE AT LEAST 48 HOURS PRIOR TO EXCAVATION TO DETERMINE WHICH UTILITIES ARE IN THE AREA.

TRENCH BACKFILL SHALL BE ACCORDING TO SECTION 593 OF THE STANDARD SPECIFICATIONS.

COMMITMENTS

A NATIVE PRAIRIE REMNANT SITE IS LOCATED ON THE WEST SIDE OF THE INTERSTATE. IN ORDER TO PROTECT THE PRAIRIE, NO PARKING OF VEHICLES OR STORAGE OF EQUIPMENT OR MATERIALS SHALL OCCUR WITHIN THE PRAIRIE. AFTER CONSTRUCTION, THE DISTURBED AREA SHALL BE RESEEDING USING SEED CLASS 4 AND 5A.

SEEDING CLASS 2A SHALL BE USED THROUGHOUT THE REMAINDER OF THE WORK SITE.

HMA MIXTURE REQUIREMENT TABLE

MIXTURE USE(S):	HMA BASE COURSE WIDENING	HMA SHOULDER TOP LIFT (2")	HMA SHOULDER BOTTOM LIFTS
BINDER GRADE (PG):	PG64-22	PG64-22	PG64-22
DESIGN AIR VOIDS:	4% @ N50	4% @ N50	4% @ N50
MIXTURE COMPOSITION: (MIXTURE GRADATION)	IL 19.0	IL 9.5FG	IL 19.0
FRICTION AGGREGATE:		MIXTURE C	
MIXTURE WEIGHT:	112.0 LB/SY/IN	112.0 LB/SY/IN	112.0 LB/SY/IN
QUALITY MANAGEMENT PROGRAM:	QC/QA	QC/QA	QC/QA
SUBLOT SIZE:			
DENSITY TEST METHOD:	CORES	GROWTH CURVE	CORES
LOCATION	INSIDE SHOULDER	ENTIRE	ENTIRE

STATE OF ILLINOIS  
DEPARTMENT OF TRANSPORTATION  
DISTRICT THREE  
AS BUILT INFORMATION

\_\_\_\_\_  
SUPERVISING CONSTRUCTION FIELD ENGINEER

\_\_\_\_\_  
RESIDENT ENGINEER / TECHNICIAN

START & END DATES  
OF CONSTRUCTION:

INSPECTORS:

STATE OF ILLINOIS  
DEPARTMENT OF TRANSPORTATION  
DISTRICT THREE

PREPARED BY: Don Beaulieu  
DISTRICT STUDIES & PLANS ENGINEER

DATE: June 3, 2016

EXAMINED BY: [Signature]  
DISTRICT CONSTRUCTION ENGINEER

[Signature]  
DISTRICT MATERIALS ENGINEER  
[Signature]  
DISTRICT OPERATIONS ENGINEER

STATE OF ILLINOIS  
DEPARTMENT OF TRANSPORTATION

GENERAL NOTES

F.A.I. RTE.	SECTION	COUNTY	TOTAL SHEETS	SHEET NO.
57	(46, 38-11C)	1000UOIS	25	2
CONTRACT NO. 66F54			ILLINOIS FED. AID PROJECT	

FILE NAME =	USER NAME = plstachr	DESIGNED - ECP	REVISED -
plstachr\110846BID\TEG\Illinois.gov\PIDOT\Documents\PIDOT Offices\District 3\Projects\036\DRW\Drawings\EA04h\60P-03xxxx-ah1-cover.dwg		CHECKED - RLW	REVISED -
Default	PLOT SCALE = 100.0000' / in.	DATE - 5/2/16	REVISED -

SCALE: SHEET 1 OF 1 SHEETS STA. TO STA.

CODE NO.	ITEM	UNIT	TOTAL QUANTITY	CONSTR. CODE	
				90% FEDERAL 10% STATE	
				ROADWAY	
				0044	RURAL
20200100	EARTH EXCAVATION	CU YD	140	140	
20800150	TRENCH BACKFILL	CU YD	445	445	
25000210	SEEDING, CLASS 2A	ACRE	0.2	0.2	
25000310	SEEDING, CLASS 4	ACRE	0.1	0.1	
25000322	SEEDING, CLASS 5A	ACRE	0.1	0.1	
25000400	NITROGEN FERTILIZER NUTRIENT	POUND	18	18	
25000500	PHOSPHORUS FERTILIZER NUTRIENT	POUND	18	18	
25000600	POTASSIUM FERTILIZER NUTRIENT	POUND	18	18	
28000305	TEMPORARY DITCH CHECKS	FOOT	30	30	
28000500	INLET AND PIPE PROTECTION	EACH	2	2	
28100807	STONE DUMPED RIPRAP, CLASS A4	TON	26	26	
31101400	SUBBASE GRANULAR MATERIAL, TYPE B 6"	SQ YD	41	41	
31101900	SUBBASE GRANULAR MATERIAL, TYPE C	TON	370	370	
31200100	STABILIZED SUBBASE 4"	SQ YD	326	326	

14

FILE NAME =	USER NAME = woodshankr1	DESIGNED - ECP	REVISED -	<b>STATE OF ILLINOIS DEPARTMENT OF TRANSPORTATION</b>	<b>SUMMARY OF QUANTITIES</b>			F.A.I. RTE.	SECTION	COUNTY	TOTAL SHEETS	SHEET NO.
\\r.004E0D\NETE\illinois.gov\PM00F\DO	uments\DOT Offices\District 3\Projects\036	DRAWN Data\EN0sh	REVISED -					57	(46, 38-11C)	IRROQUOIS	25	3
Default	PLOT SCALE = 1/8"=1'-0"	CHECKED - RLW	REVISED -		SCALE:	SHEET 1 OF 4 SHEETS	STA.	TO STA.	CONTRACT NO. 66F54			
	PLOT DATE = 6/3/2016	DATE - 5/2/16	REVISED -		ILLINOIS FED. AID PROJECT							

CODE NO.	ITEM	UNIT	TOTAL QUANTITY	CONSTR. CODE
				90% FEDERAL
				10% STATE
				ROADWAY
				0044
				RURAL
35600716	HOT-MIX ASPHALT BASE COURSE WIDENING, 10"	SQ YD	372	372
40600275	BITUMINOUS MATERIALS (PRIME COAT)	POUND	1152	1152
44200050	WELDED WIRE REINFORCEMENT	SQ YD	163	163
44200632	CLASS A PATCHES, TYPE IV, 15 INCH	SQ YD	163	163
44201106	CLASS B PATCHES, TYPE IV, 20 INCH	SQ YD	163	163
44201299	DOWEL BARS 1 1/2"	EACH	44	44
44213000	PATCHING REINFORCEMENT	SQ YD	163	163
44213200	SAW CUTS	FOOT	632	632
44213204	TIE BARS 3/4"	EACH	120	120
48101200	AGGREGATE SHOULDERS, TYPE B	TON	20	20
48203045	HOT-MIX ASPHALT SHOULDERS, 12"	SQ YD	906	906
50105220	PIPE CULVERT REMOVAL	FOOT	581	581
50800205	REINFORCEMENT BARS, EPOXY COATED	POUND	5200	5200
54003000	CONCRETE BOX CULVERTS	CU YD	20	20

14

FILE NAME =	USER NAME = woodshankr1	DESIGNED -	REVISED -	<b>STATE OF ILLINOIS DEPARTMENT OF TRANSPORTATION</b>	<b>SUMMARY OF QUANTITIES</b>		F.A.I. RTE.	SECTION	COUNTY	TOTAL SHEETS	SHEET NO.	
p:\ILL984EBID\TEG\Illinois.gov\PI001\Doc	ments\DOT\Office\District 3\Projects\036	DRAWN	REVISED				57	(46, 38-11C)	IRROQUOIS	25	4	
		CHECKED -	REVISED -				SCALE: SHEET 2 OF 4 SHEETS STA. TO STA.		CONTRACT NO. 66F54		ILLINOIS FED. AID PROJECT	
Default		DATE -	REVISED -									

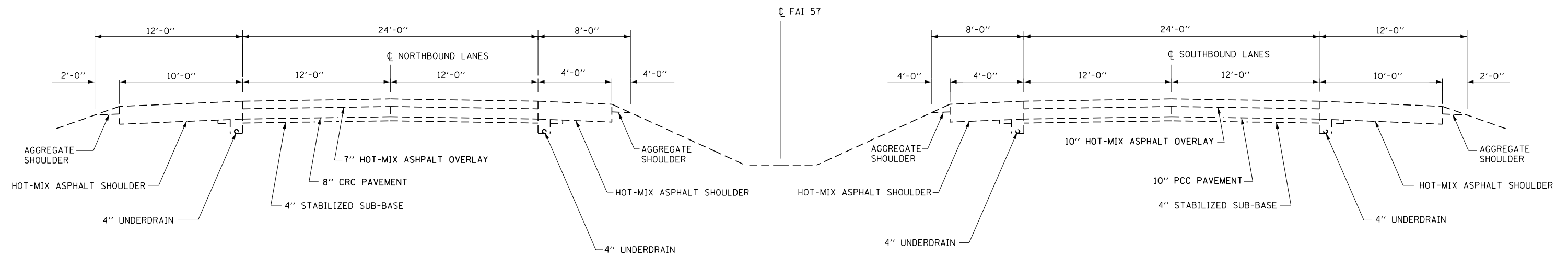
CODE NO.	ITEM	UNIT	TOTAL QUANTITY	CONSTR. CODE
				90% FEDERAL
				10% STATE
				ROADWAY
				0044
				RURAL
542A0223	PIPE CULVERTS, CLASS A, TYPE 1 18"	FOOT	22	22
542A5485	PIPE CULVERTS, CLASS A, TYPE 1 EQUIVALENT ROUND-SIZE 30"	FOOT	600	600
60108104	PIPE UNDERDRAINS, TYPE 1, 4"	FOOT	244	244
64200116	SHOULDER RUMBLE STRIPS, 16 INCH	FOOT	244	244
67100100	MOBILIZATION	LSUM	1	1
70100701	TRAFFIC CONTROL AND PROTECTION, STANDARD 701406	EACH	1	1
70103815	TRAFFIC CONTROL SURVEILLANCE	CAL DA	30	30
70106800	CHANGEABLE MESSAGE SIGN	CAL MO	4	4
70300220	TEMPORARY PAVEMENT MARKING - LINE 4"	FOOT	1364	1364
70300240	TEMPORARY PAVEMENT MARKING - LINE 6"	FOOT	1170	1170
70400100	TEMPORARY CONCRETE BARRIER	FOOT	400	400
70400200	RELOCATE TEMPORARY CONCRETE BARRIER	FOOT	1200	1200
70600250	IMPACT ATTENUATORS, TEMPORARY (NON- REDIRECTIVE), TEST LEVEL 3	EACH	1	1
70600350	IMPACT ATTENUATORS, RELOCATE (NON- REDIRECTIVE), TEST LEVEL 3	EACH	3	3

14

CODE NO.	ITEM	UNIT	TOTAL QUANTITY	CONSTR. CODE
				100% STATE ROADWAY 0044 RURAL
78003110	PREFORMED PLASTIC PAVEMENT MARKING, TYPE B - LINE 4"	FOOT	1364	1364
78003130	PREFORMED PLASTIC PAVEMENT MARKING, TYPE B - LINE 6"	FOOT	1170	1170
X0327980	PAVEMENT MARKING REMOVAL - WATER ELASTING	SQ FT	742	742
X0327131	DRAINAGE STRUCTURES, NO. 1	EACH	1	1
X0327622	REMOVE AND REINSTALL HIGH TENSION CABLE MEDIAN BARRIER	FOOT	100	100
X5012502	CONCRETE REMOVAL (SPECIAL)	CU YD	6	6
X7010208	TRAFFIC CONTROL AND PROTECTION, STANDARD 701402 (SPECIAL)	EACH	1	1
X7010410	SPEED DISPLAY TRAILER	CAL MO	2	2
X7040125	PINNING TEMPORARY CONCRETE BARRIER	EACH	192	192

9 \*SPECIALITY ITEMS

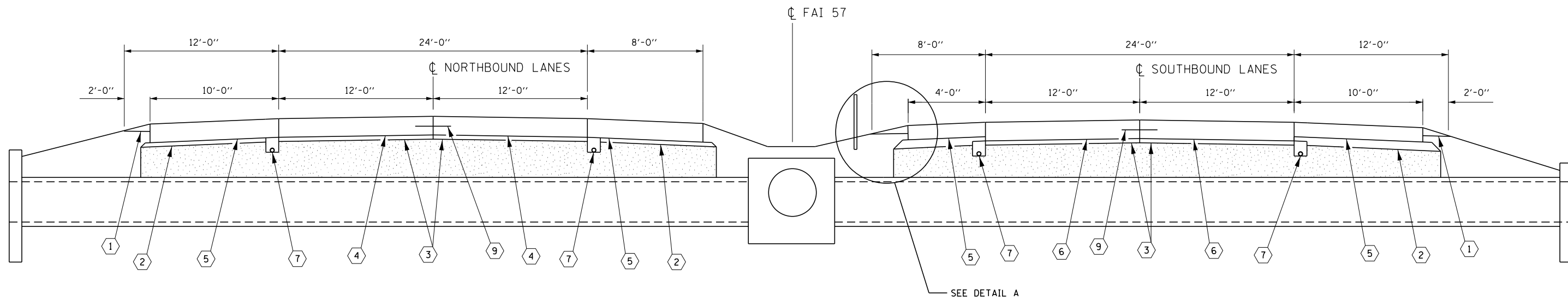
FILE NAME =	USER NAME = plotschr	DESIGNED - ECP	REVISED -	<b>STATE OF ILLINOIS DEPARTMENT OF TRANSPORTATION</b>	<b>SUMMARY OF QUANTITIES</b>	F.A.I. RTE.	SECTION	COUNTY	TOTAL SHEETS	SHEET NO.	
PROJECT NO. =	PROJECT NAME =	DRAWN BY =	REVISED -			57	146, 38-11C	IROQUOIS	25	6	
PLOT SCALE = 1/8" = 1' / in.	CHECKED - RLW	REVISED -				CONTRACT NO. 66F54					
PLOT DATE = 5/2/2016	DATE - 5/2/16	REVISED -				ILLINOIS FED. AID PROJECT					
				SCALE: SHEET 4 OF 4 SHEETS STA. TO STA.							



**EXISTING TYPICAL SECTION**

STA. 799+00 TO 802+50

FILE NAME =	USER NAME = pletschr	DESIGNED - ECP	REVISED -	<b>STATE OF ILLINOIS DEPARTMENT OF TRANSPORTATION</b>	<b>TYPICAL SECTIONS</b>			F.A.I. R.T.E.	SECTION	COUNTY	TOTAL SHEETS	SHEET NO.
pw:\IL\084EBIDINTEG.illinois.gov\PI\DOT\Documents\DOT Offices\District 3\Projects\0366\Drawings\EA\0366\03xxxx-shr-cover.dwg	PLOT SCALE = 100.0000' / in.	CHECKED - RLW	REVISED -					57	(46, 38-1)C	IROQUOIS	25	7
Default	PLOT DATE = 6/2/2016	DATE - 5/2/16	REVISED -		CONTRACT NO. 66F54			ILLINOIS FED. AID PROJECT				
					SCALE:	SHEET 1 OF 2 SHEETS	STA.	TO STA.				

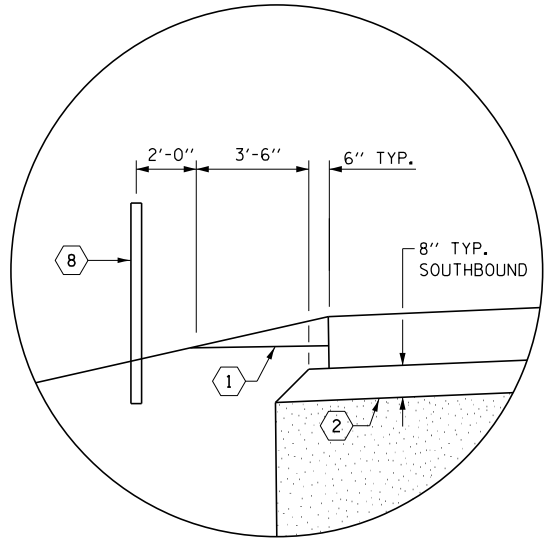


**PROPOSED CROSS SECTION**

STA. 800+80  
DIMENSIONS SHOWN AT RIGHT ANGLES TO  $\perp$

**LEGEND**

- ① AGGREGATE SHOULDER, TY B
- ② SUB-BASE GRANULAR MATERIAL, TY C
- ③ 4" STABILIZED SUB-BASE
- ④ 15" CLASS A PATCH
- ⑤ HOT-MIX ASPHALT SHOULDERS 12"
- ⑥ 20" CLASS B PATCH
- ⑦ 4" UNDERDRAIN
- ⑧ REMOVE AND REINSTALL HIGH TENSION CABLE MEDIAN BARRIER
- ⑨ TIE BARS  $\frac{3}{4}$ "

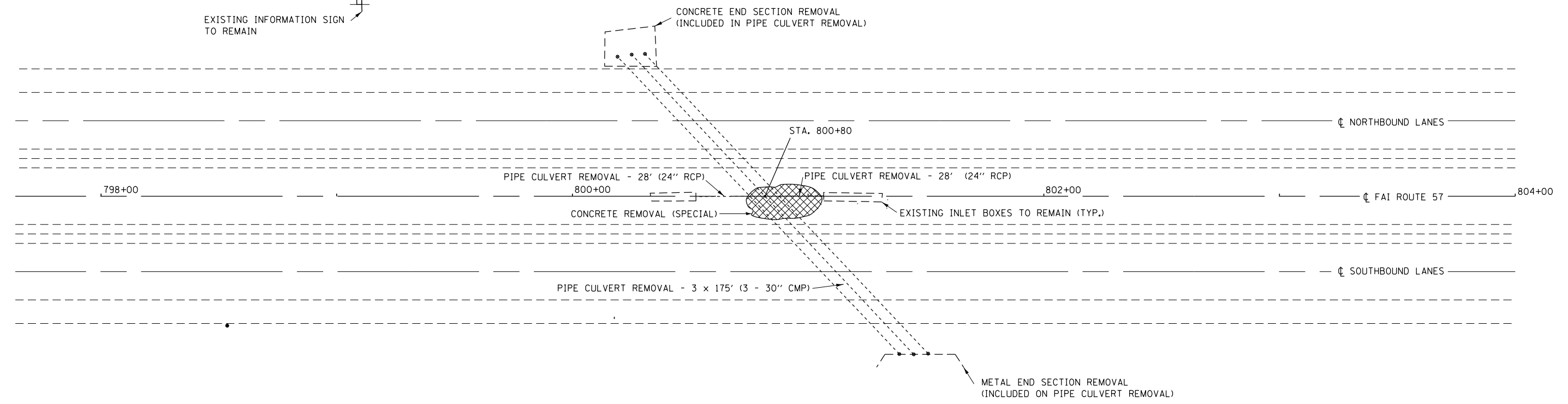


**DETAIL A**

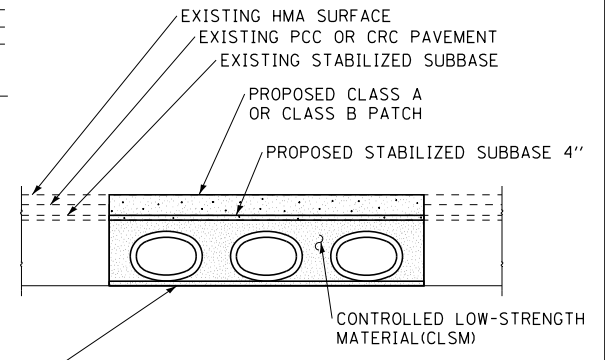
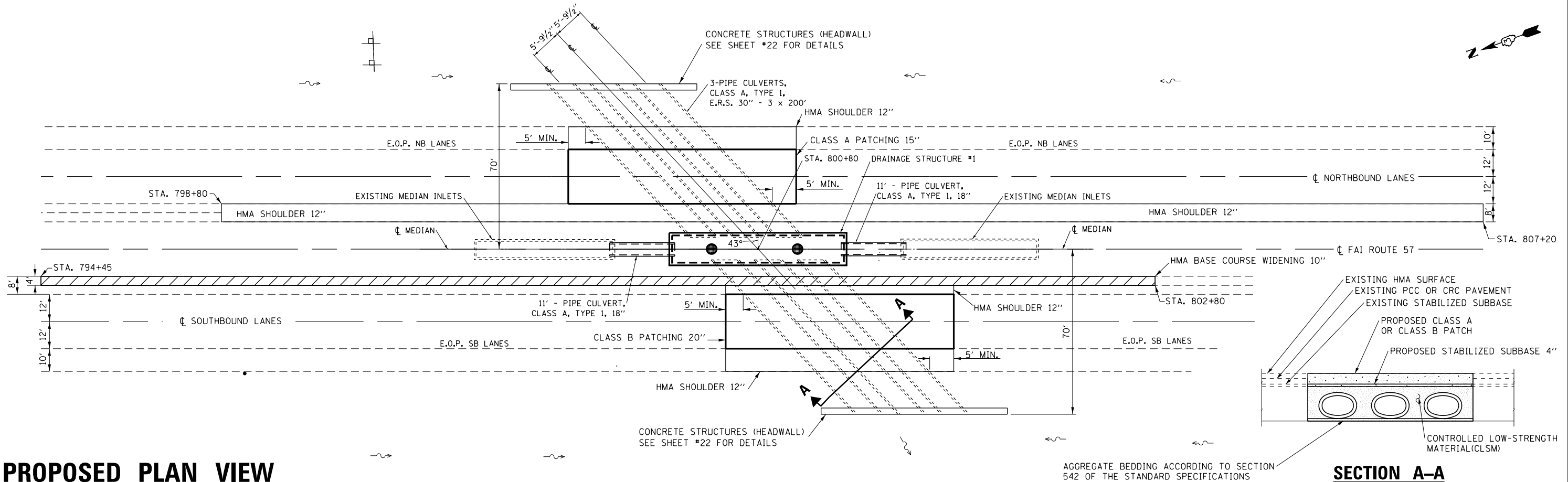
FILE NAME =	USER NAME = pletschr	DESIGNED - ECP	REVISED -	<b>STATE OF ILLINOIS DEPARTMENT OF TRANSPORTATION</b>	<b>PROPOSED CROSS SECTION</b>			F.A.I. RE.	SECTION	COUNTY	TOTAL SHEETS	SHEET NO.
pw:\IL\084EBIDINTEG.illinois.gov\PIWIDOT\Documents\DOT Offices\District 3\Projects\0366\Drawings\EA05\03xxxx-shr-cover.dwg	PLotted SCALE = 100.0000' / in.	CHECKED - RLW	REVISED -					57	(46, 38-1C)	IROQUOIS	25	8
Default	PLOT DATE = 6/2/2016	DATE - 5/2/16	REVISED -		SCALE: SHEET 2 OF 2 SHEETS STA. TO STA.			CONTRACT NO. 66F54				
ILLINOIS FED. AID PROJECT												



EXISTING INFORMATION SIGN  
TO REMAIN

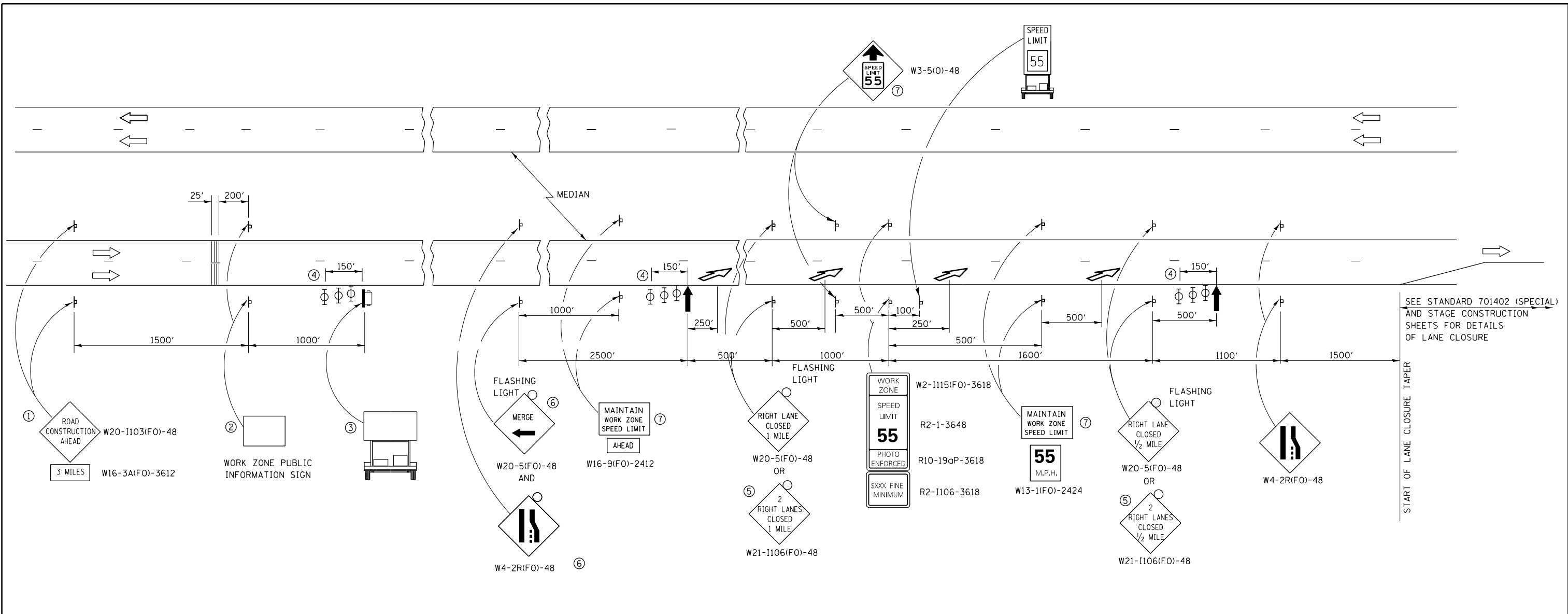


### EXISTING PLAN VIEW



### PROPOSED PLAN VIEW

FILE NAME =	USER NAME = pletschr	DESIGNED - ECP	REVISED -	<b>STATE OF ILLINOIS DEPARTMENT OF TRANSPORTATION</b>	<b>PLAN VIEW</b>	F.A.I. R.T.E. =	SECTION =	COUNTY =	TOTAL SHEETS =	SHEET NO. =	
pw:\IL\084EBIDINTEG.illinois.gov\PIWIDOT\Documents\IDOT Offices\District 3\Projects\0366\Drawings\EA\shp\0366\03xxxx-shr-cover.dwg	DATE = 5/31/16	CHECKED - RLW	REVISED -			57	(46, 38-1)	IROQUOIS	25	9	
Default	PLOT DATE = 6/2/2016	DATE = 5/31/16	REVISED -			CONTRACT NO. 66F54		ILLINOIS FED. AID PROJECT			
						SCALE:	SHEET 1 OF 1 SHEETS	STA.	TO STA.		

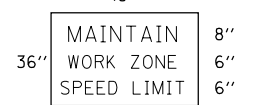


SEE STANDARD 701402 (SPECIAL) AND STAGE CONSTRUCTION SHEETS FOR DETAILS OF LANE CLOSURE

START OF LANE CLOSURE TAPER

- ① THE ROAD CONSTRUCTION AHEAD SIGN SHALL BE LOCATED 3 MILES IN ADVANCE OF THE PROJECT LIMITS.
- ② THE MESSAGE AND SIZE OF THE WORK ZONE PUBLIC INFORMATION SIGN SHALL BE AS SPECIFIED BY THE DEPARTMENT.
- ③ TO BE PLACED IN THE MEDIAN WHEN FEASIBLE. THE MESSAGE BOARD SHALL BE USED TO DISPLAY STATUS OF LANES WITHIN THE PROJECT. THE PRIMARY MESSAGES SHALL BE:  
"RIGHT LANE CLOSED" / " x MILES AHEAD"  
"LEFT LANE CLOSED" / " x MILES AHEAD"  
"ALL LANES OPEN"
- ④ THREE, TYPE II BARRICADES, DRUMS, OR VERTICAL BARRICADES AT 50' CENTERS.
- ⑤ THIS SIGN SHALL BE USED WHEN 2 LANES ARE CLOSED.
- ⑥ WHEN THE LEFT LANE IS CLOSED, SWITCH THESE TWO SIGNS AND THE DIRECTION OF THE MERGE ARROW.
- ⑦ THIS SIGN SHALL ONLY BE USED IF THE EXISTING SPEED LIMIT IS GREATER THAN 65 MPH.

⑦ 48"x36" FLUORESCENT ORANGE SIGN WITH BLACK LETTERS.  
48"



- ↑ ARROW BOARD
- ☐ PORTABLE CHANGEABLE MESSAGE SIGN
- ⊥ SIGN
- ⊕ TYPE II BARRICADE, DRUM, OR VERTICAL BARRICADE WITH MONODIRECTIONAL FLASHING LIGHT
- ↘ LANE DROP ARROW - SEE STANDARD 780001
- ▨ TEMPORARY RUMBLE STRIPS
- 🚛 SPEED DISPLAY TRAILER

**GENERAL NOTE:**

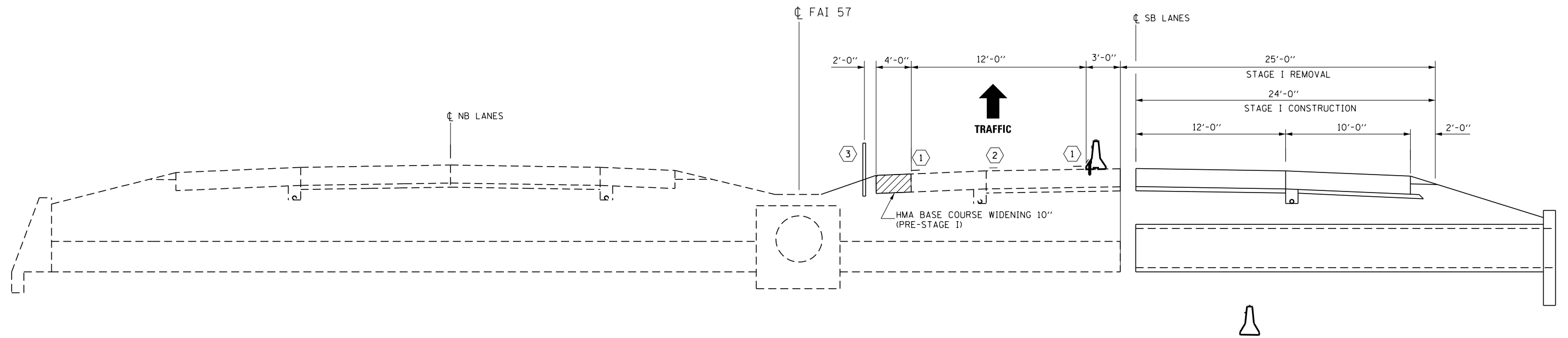
THIS STANDARD IS USED WHERE AT ANY TIME A LANE IS CLOSED ON A FREEWAY/EXPRESSWAY.

WHEN THE LEFT LANE IS CLOSED, LEFT LANE CLOSED SIGNS SHALL BE SUBSTITUTED FOR THE RIGHT LANE CLOSED SIGNS.

THE FIRST TWO SIGNS AND THE MESSAGE BOARD ARE STATIONARY. THE OTHER SIGNS AND ARROWBOARDS SHALL BE MOVED AS NECESSARY TO MAINTAIN THE REQUIRED DISTANCE FROM THE START OF THE LANE CLOSURE TAPER(S).

SEE SPECIAL PROVISIONS.

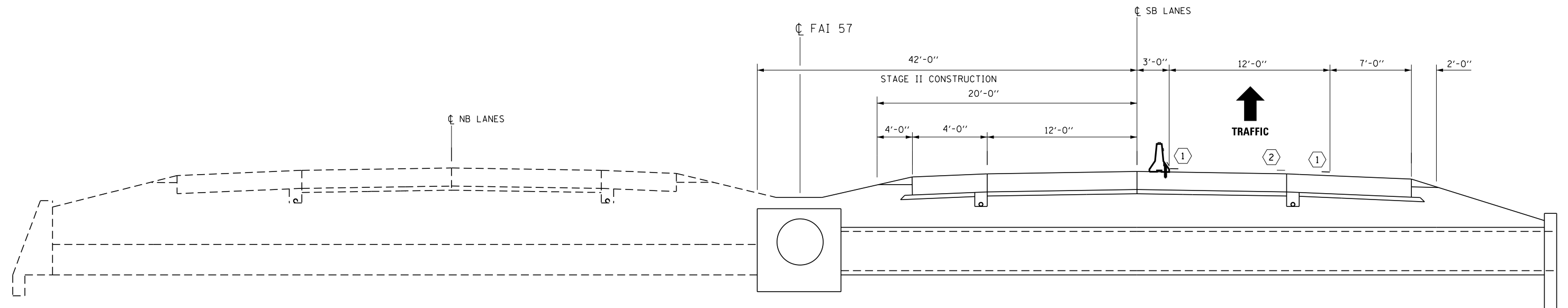
FILE NAME =	USER NAME = pletschr	DESIGNED - ECP	REVISED -	<b>STATE OF ILLINOIS DEPARTMENT OF TRANSPORTATION</b>	<b>TRAFFIC CONTROL AND PROTECTION STANDARD 701400 (SPECIAL)</b>	F.A.I. RE.	SECTION	COUNTY	TOTAL SHEETS	SHEET NO.	
pw:\IL\084EBIDINTEG.illinois.gov\PIDOT\Documents\DOT Offices\District 3\Projects\0366\Drawings\6ADsh\603xxxx-shr\cover.dwg	PLotted	CHECKED - RLW	REVISED -			57	(46, 38-1C)	IROQUOIS	25	10	
Default	PLot DATE = 6/2/2016	DATE - 5/12/16	REVISED -			CONTRACT NO. 66F54					
						ILLINOIS FED. AID PROJECT					



**LEGEND**

- ① TEMPORARY PAVEMENT MARKING
- ② PAVEMENT MARKING REMOVAL
- ③ REMOVE HIGH TENSION CABLE MEDIAN BARRIER

**STAGE I**  
**LOOKING SOUTH**  
 DIMENSIONS SHOWN AT RIGHT ANGLES TO  $\perp$



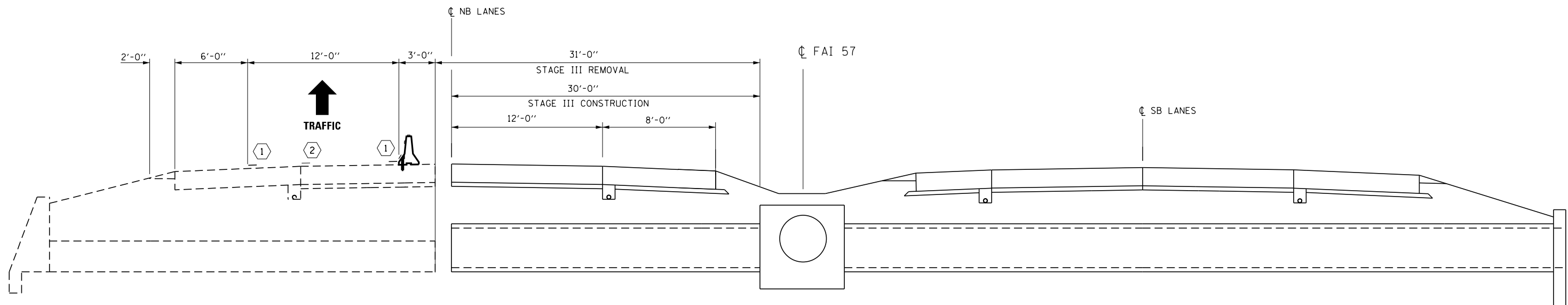
**STAGE II**  
**LOOKING SOUTH**  
 DIMENSIONS SHOWN AT RIGHT ANGLES TO  $\perp$

FILE NAME =	USER NAME = woodshankr1	DESIGNED - ECP	REVISED -
pw:\IL\084EBIDINTEG\illinois.gov\PI\DOT\Documents\DOT Offices\District 3\Projects\0366\DRAWING\DATA\EGP\03xxxx-shr-cover.dwg		DRAWN - ECP	REVISED -
Default	PLOT SCALE = 100.0000' / in.	CHECKED - RLW	REVISED -
	PLOT DATE = 6/3/2016	DATE - 5/12/16	REVISED -

**STATE OF ILLINOIS**  
**DEPARTMENT OF TRANSPORTATION**

<b>STAGING</b>	
SCALE:	SHEET 1 OF 2 SHEETS STA. TO STA.

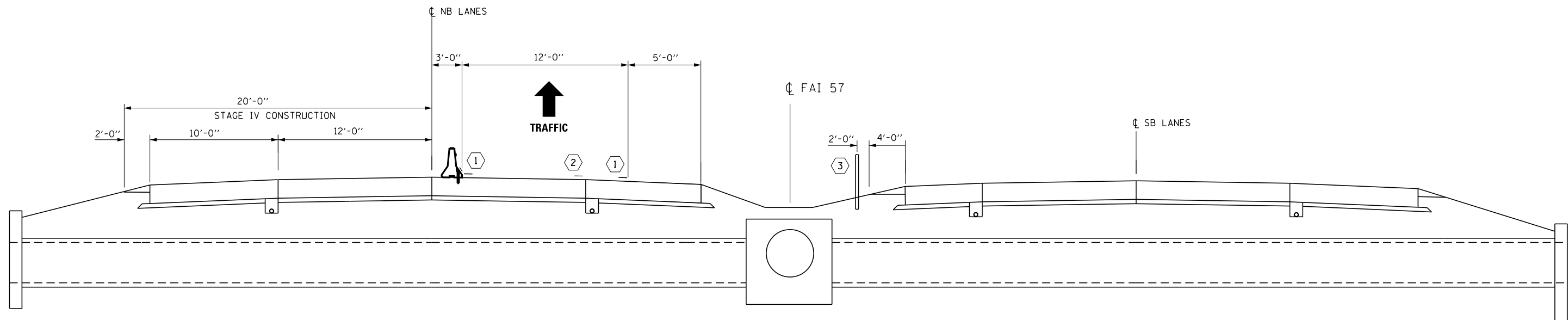
F.A.I. RTE.	SECTION	COUNTY	TOTAL SHEETS	SHEET NO.
57	(46, 38-1)C	IROQUOIS	25	11
CONTRACT NO. 66F54				
ILLINOIS FED. AID PROJECT				



**STAGE III**  
**LOOKING SOUTH**  
 DIMENSIONS SHOWN AT RIGHT ANGLES TO  $\perp$

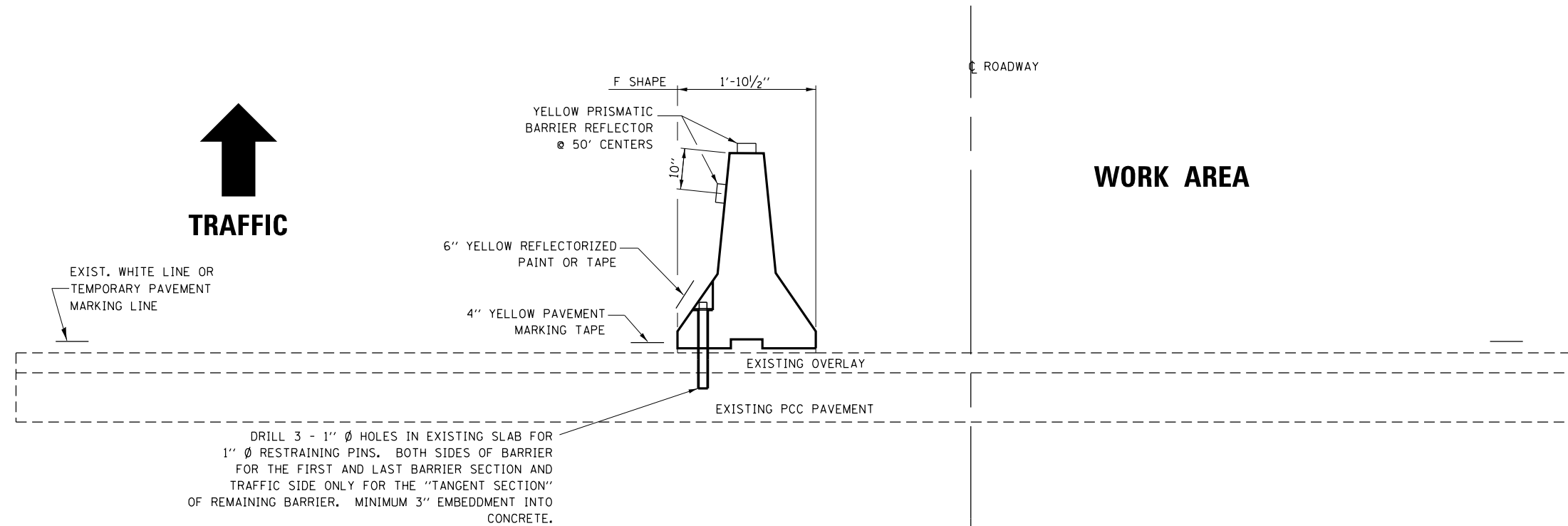
**LEGEND**

- ① TEMPORARY PAVEMENT MARKING
- ② PAVEMENT MARKING REMOVAL
- ③ REINSTALL HIGH TENSION CABLE MEDIAN BARRIER



**STAGE IV**  
**LOOKING SOUTH**  
 DIMENSIONS SHOWN AT RIGHT ANGLES TO  $\perp$

FILE NAME =	USER NAME = woodshankr1	DESIGNED - ECP	REVISED -	<b>STATE OF ILLINOIS DEPARTMENT OF TRANSPORTATION</b>	<b>STAGING</b>	F.A.I. RTE.	SECTION	COUNTY	TOTAL SHEETS	SHEET NO.	
pw:\IL\084EBIDINTEG\illinois.gov\PIDOT\Documents\DOT Offices\District 3\Projects\0366\Drawings\EA0\0366\03xxxx-shr-cover.dwg	PLotted	DATE	DATE			57	(46, 38-1)C	IROQUOIS	25	12	
Default	PLOT SCALE = 100.0000' / in.	CHECKED - RLW	REVISED -			CONTRACT NO. 66F54					
	PLOT DATE = 6/3/2016	DATE - 5/12/16	REVISED -			SCALE:	SHEET 2 OF 2 SHEETS	STA.	TO STA.	ILLINOIS FED. AID PROJECT	



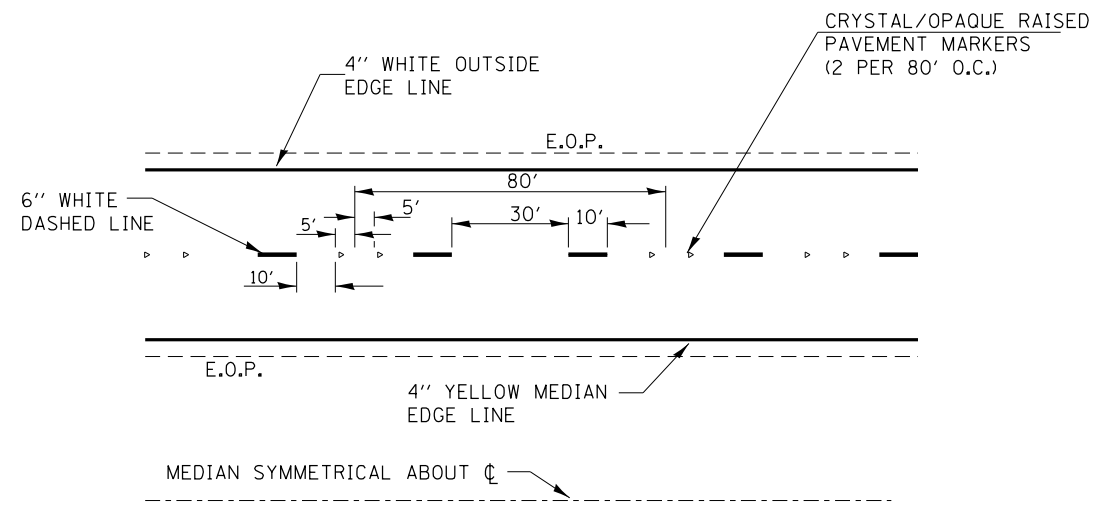
**TEMPORARY CONCRETE BARRIER**

NOTES:

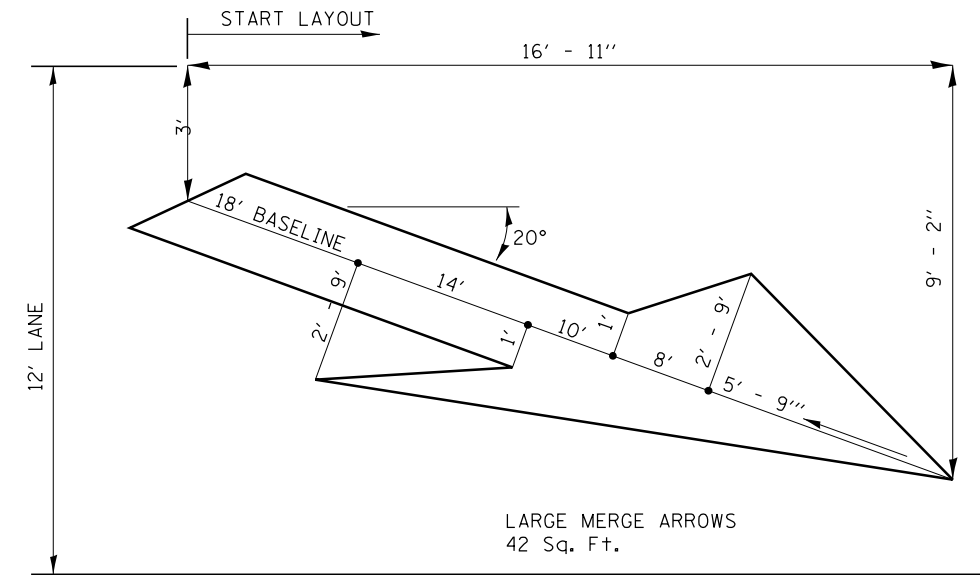
1. THE CONTRACTOR HAS THE OPTION OF USING EITHER THE LINE ON THE TEMPORARY CONCRETE BARRIER OR ON THE PAVEMENT.
2. THE COLOR OF THE REFLECTORS AND PAVEMENT/BARRIER MARKING LINE WILL VARY WITH STAGING AND SHALL MATCH THE EXISTING LINE IN THE WORK AREA.
3. THE COST OF THE REFLECTORS AND THE PAVEMENT/BARRIER MARKING LINE IS INCLUDED IN THE COST OF THE TEMPORARY CONCRETE BARRIER.

**TRAFFIC CONTROL DETAIL  
FOR TEMPORARY CONCRETE BARRIER**

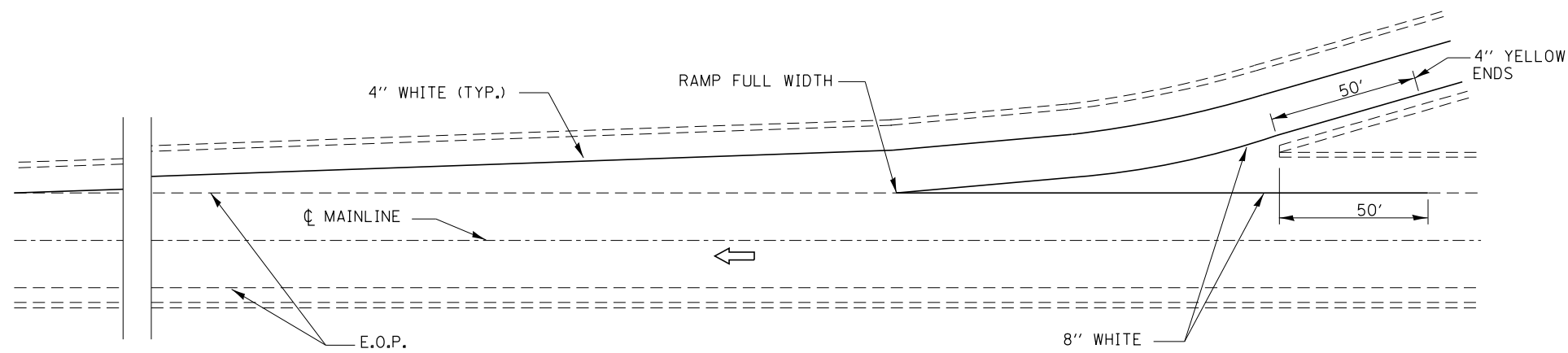
FILE NAME =	USER NAME = woodshankr1	DESIGNED - ECP	REVISED -	<b>STATE OF ILLINOIS DEPARTMENT OF TRANSPORTATION</b>	<b>TEMPORARY CONCRETE BARRIER DETAILS</b>			F.A.I. RTE.	SECTION	COUNTY	TOTAL SHEETS	SHEET NO.
pw:\IL\084EBIDINTEG.illinois.gov\PI\DOT\Documents\DOT Offices\District 3\Projects\0366\Drawings\EA04\03xxxx-shr-cover.dwg	PLotted SCALE = 100.0000' / in.	CHECKED - RLW	REVISED -					57	(46, 38-1)C	IROQUOIS	25	13
Default	PLOT DATE = 6/3/2016	DATE - 5/12/16	REVISED -		SCALE: SHEET 1 OF 1 SHEETS STA. TO STA.			CONTRACT NO. 66F54				
ILLINOIS FED. AID PROJECT												



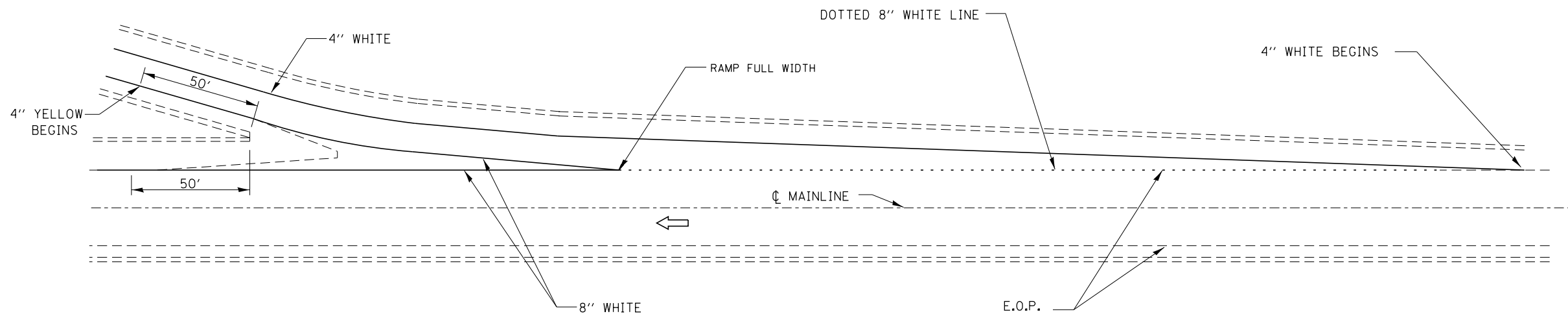
**TYPICAL PAVEMENT MARKINGS**



**LANE DROP ARROW**

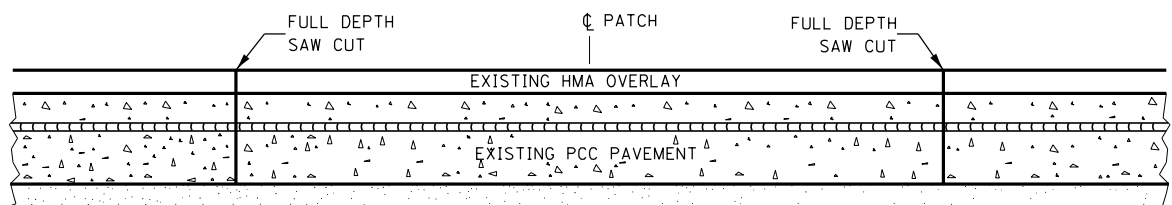
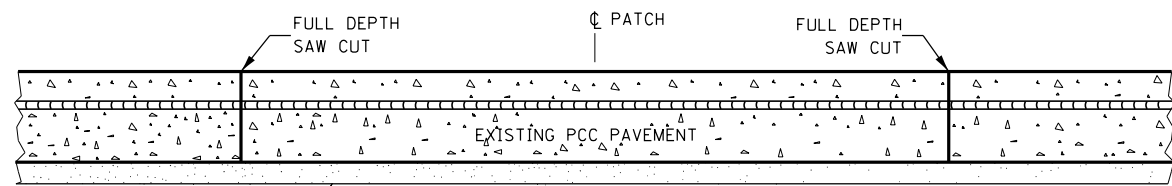
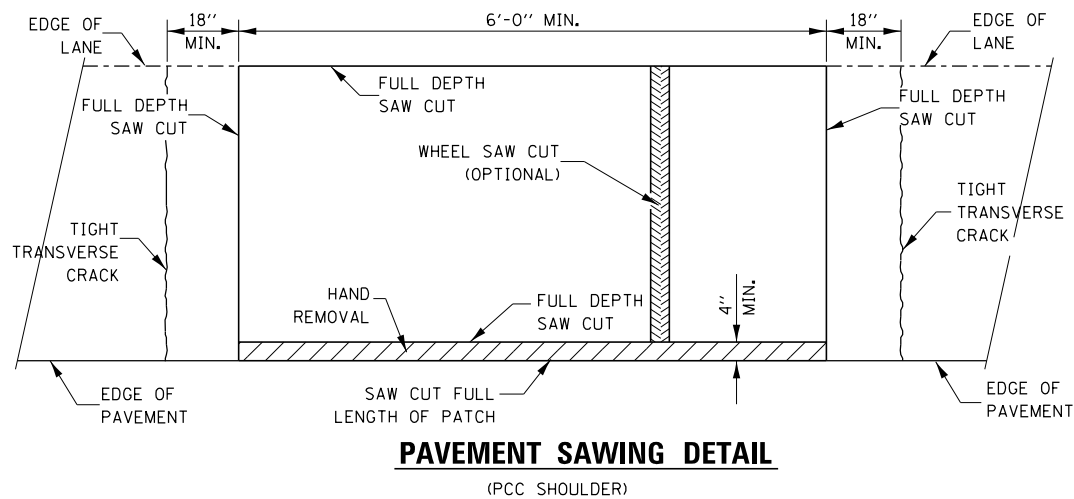
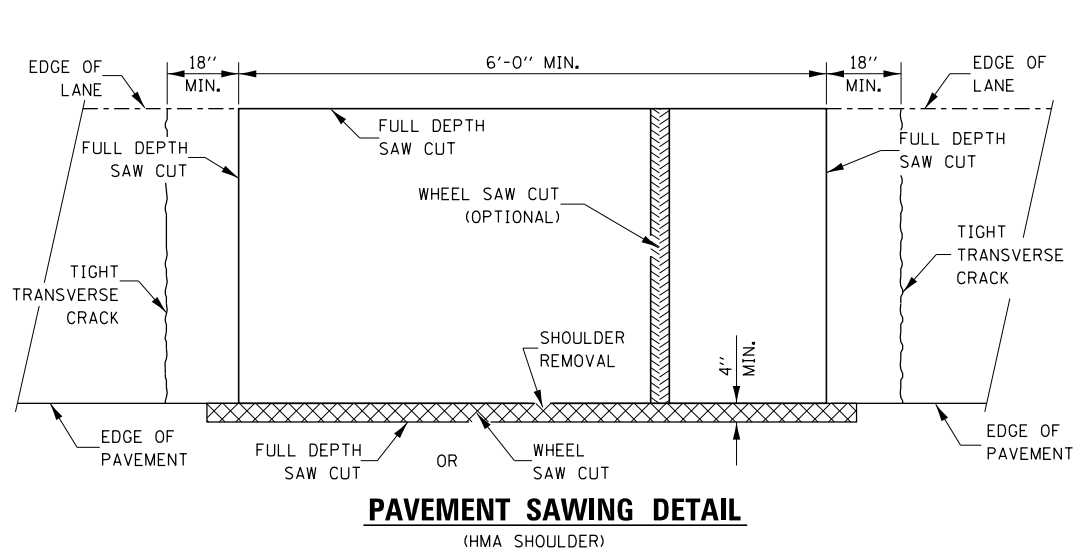


**TYPICAL PAVEMENT MARKING FOR ENTRANCE RAMP TERMINALS**

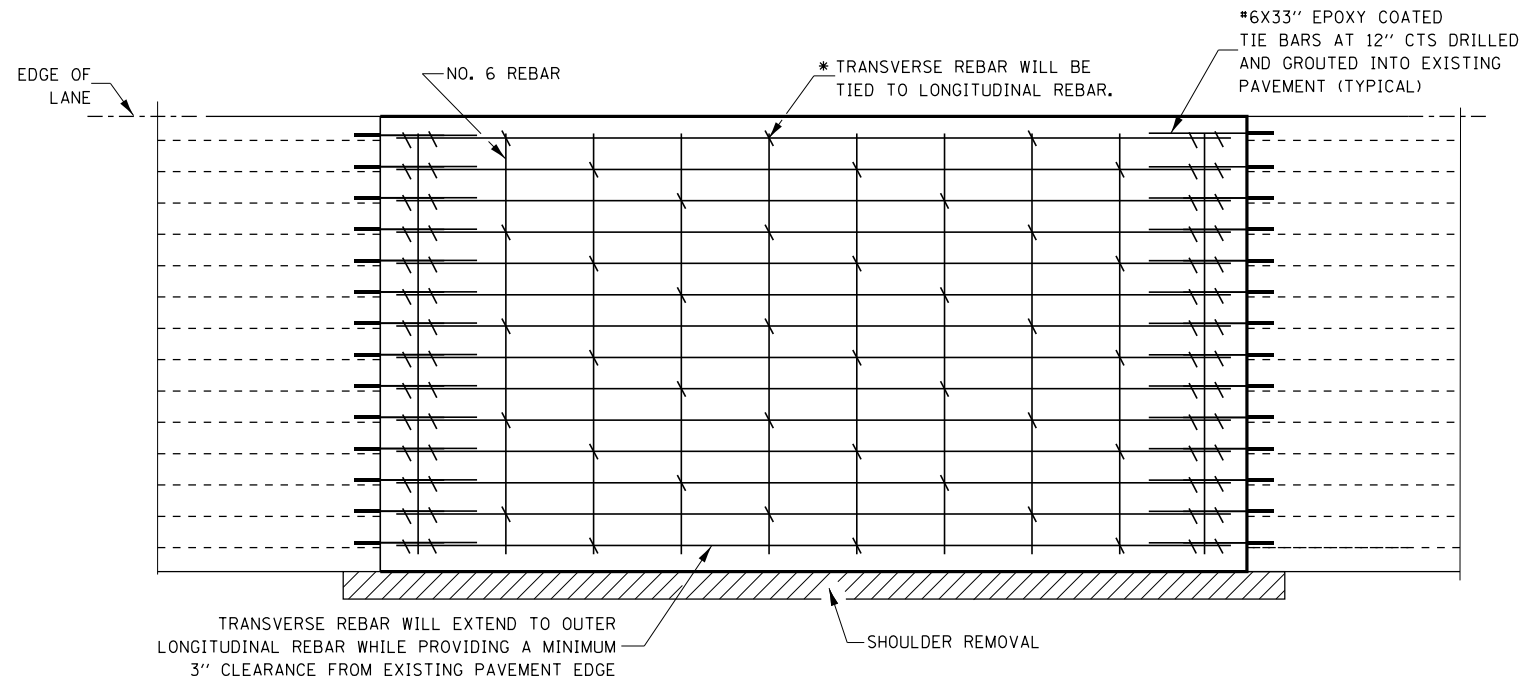


**TYPICAL PAVEMENT MARKINGS FOR EXIT RAMP TERMINALS**

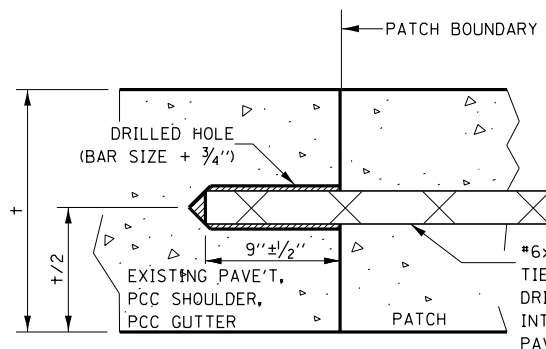
FILE NAME =	USER NAME = pletschr	DESIGNED - ECP	REVISED -	<b>STATE OF ILLINOIS DEPARTMENT OF TRANSPORTATION</b>	<b>TYPICAL PAVEMENT STRIPING</b>			F.A.I. RTE.	SECTION	COUNTY	TOTAL SHEETS	SHEET NO.
pw:\IL\084EBIDINTEG.illinois.gov\PIWIDOT\Documents\DOT Offices\District 3\Projects\0366\Drawings\0366\03xxxx-shr-cover.dwg	DATE = 5/12/16	CHECKED - RLW	REVISED -					57	(46, 38-1C)	IROQUOIS	25	14
Default	PLOT DATE = 6/2/2016	DATE - 5/12/16	REVISED -		CONTRACT NO. 66F54			ILLINOIS FED. AID PROJECT				
					SCALE:	SHEET 1	OF 1	SHEETS	STA.	TO STA.		



**PAVEMENT SAWING DETAIL FOR CLASS A PATCHING (CRC PAVEMENT)**

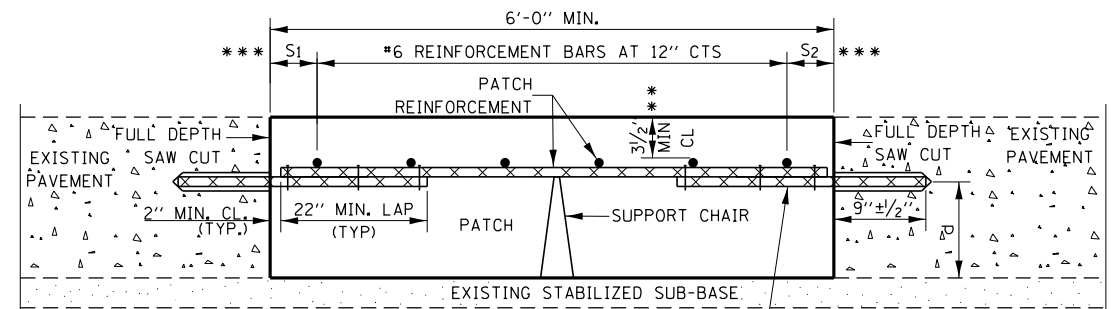


**PAVEMENT REINFORCEMENT DETAIL**

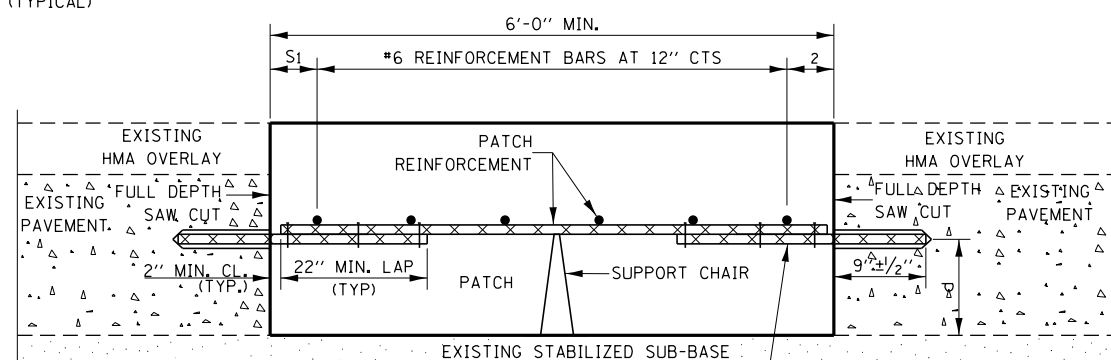


**LONGITUDINAL CONSTRUCTION JOINT PATCHES ARE OVER 20' IN LENGTH (TIE BAR GROUDED IN PLACE)**

- NOTES:**
- \* EVERY THIRD INTERSECTION MUST BE TIED.
  - \*\* WHEN THE MINIMUM CLEARANCE CANNOT BE OBTAINED WITH THE TRANSVERSE REBAR ON TOP, THEN THE TRANSVERSE REBAR SHALL BE TIED TO THE BOTTOM OF THE LONGITUDINAL REBAR.
  - \*\*\* VARIABLES WHERE S<sub>1</sub> AND S<sub>2</sub> ARE 2 1/2" MIN. AND 12" MAX.
- LONGITUDINAL REINFORCEMENT SHALL MATCH SPACING OF EXISTING REINFORCEMENT.
- SUPPORT CHAIRS SHALL BE REQUIRED WHENEVER PATCH LENGTH EXCEEDS 6'-0"
- d = VERTICAL PLACEMENT OF EXISTING REINFORCEMENT.
- DIAMETER OF DRILLED HOLE SHALL BE THE BAR + 3/4"



**WITHOUT HMA OVERLAY**



**WITH HMA OVERLAY**

**PATCHING DETAIL FOR CLASS A PATCHING (CRC PAVEMENT)**

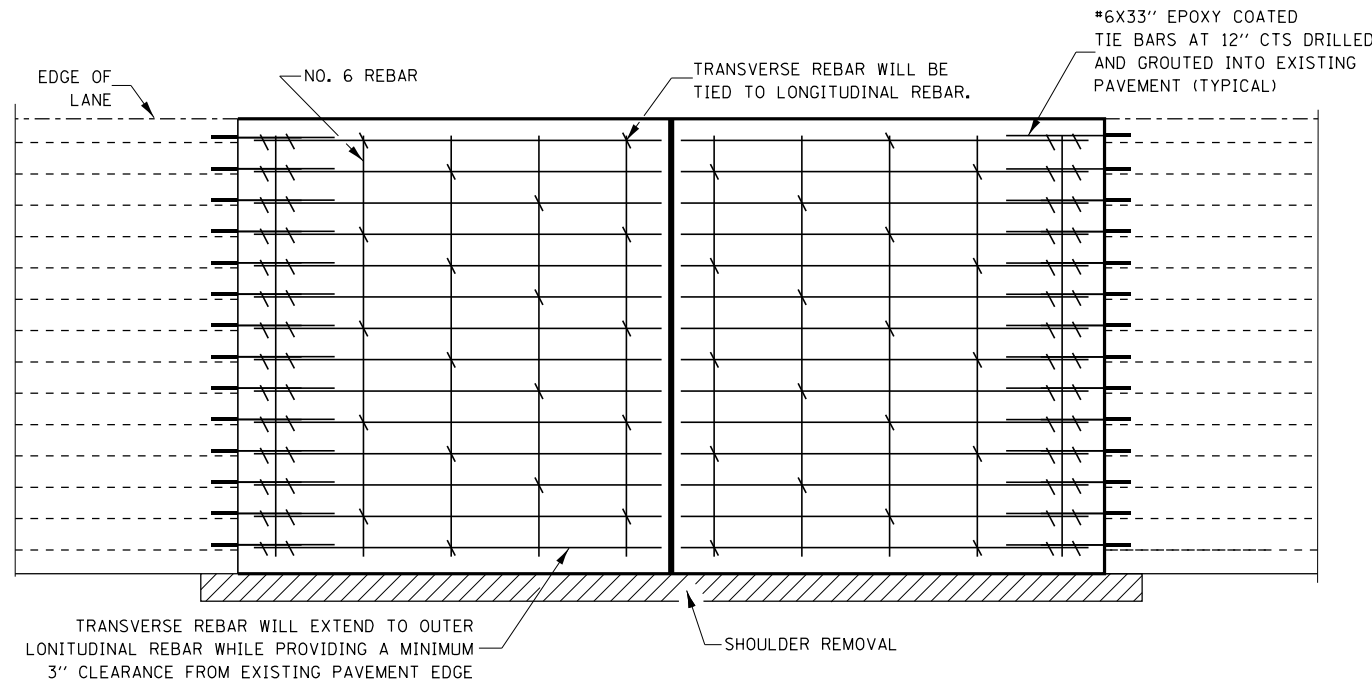
FILE NAME =	USER NAME = pletschr	DESIGNED -	REVISED -
pw\11084EBIDINTEG.illinois.gov\PI\DOT\Documents\DOT Offices\District 3\Projects\0366\Drawings\EA0\Sheets\03xxxx-shr-cover.dwg		CHECKED -	REVISED -
		DATE -	REVISED -

**STATE OF ILLINOIS DEPARTMENT OF TRANSPORTATION**

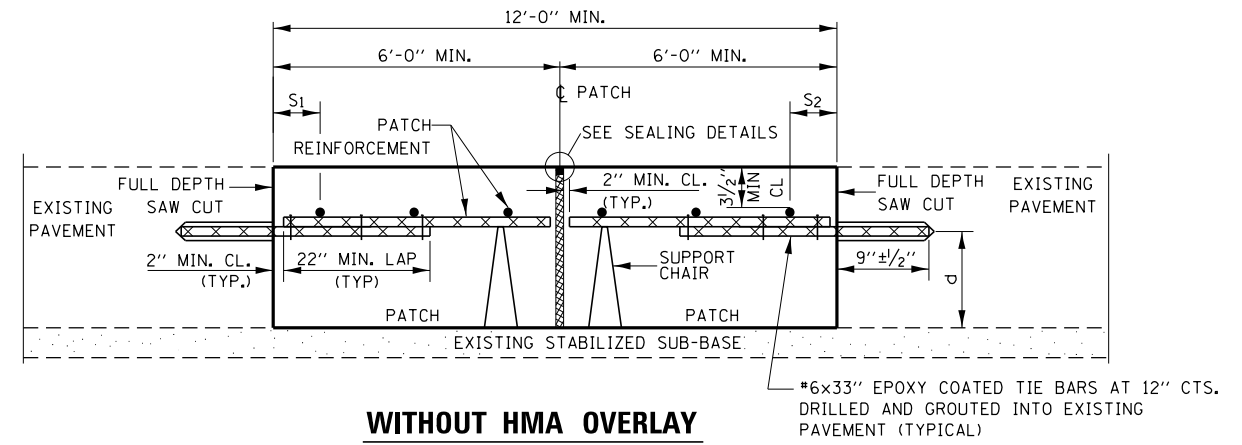
**CLASS A PATCHING DETAILS**

SCALE: SHEET NO. 1 OF 2 SHEETS STA. TO STA.

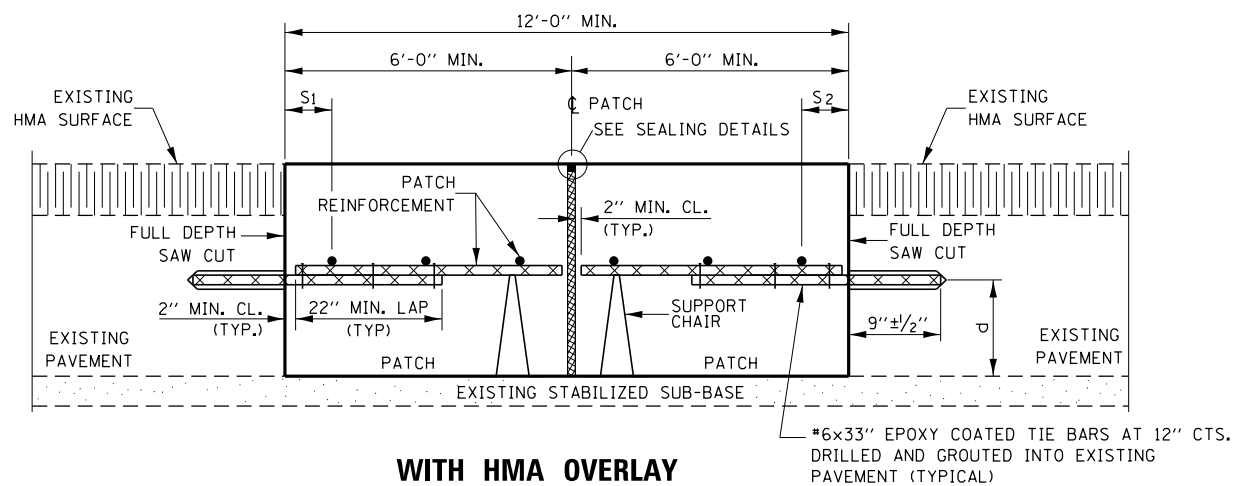
F.A.I. RE.	SECTION	COUNTY	TOTAL SHEETS	SHEET NO.
57	(46, 38-1C)	IROQUOIS	25	15
CONTRACT NO. 66F54				
FED. ROAD DIST. NO. ILLINOIS FED. AID PROJECT				



**PAVEMENT REINFORCEMENT DETAIL**

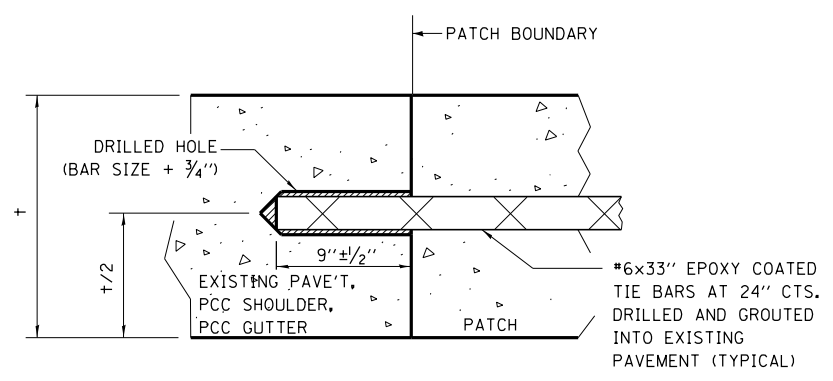


**WITHOUT HMA OVERLAY**

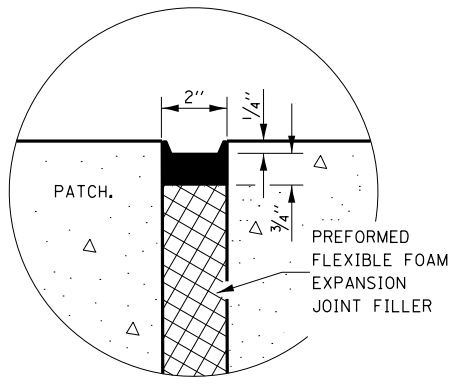


**WITH HMA OVERLAY**

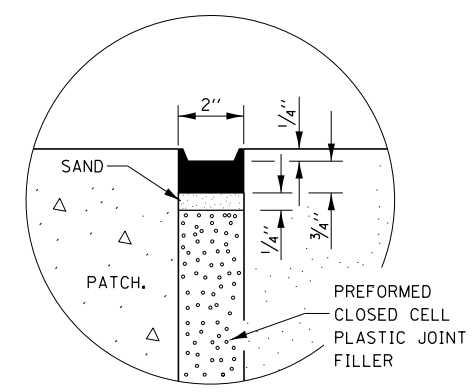
**PATCHING DETAIL FOR CLASS A PATCHING  
(CRC PAVEMENT WITH EXPANSION)**



**LONGITUDINAL CONSTRUCTION JOINT  
PATCHES ARE OVER 20' IN LENGTH  
(TIE BAR GROUTED IN PLACE)**



**SEALING DETAIL**

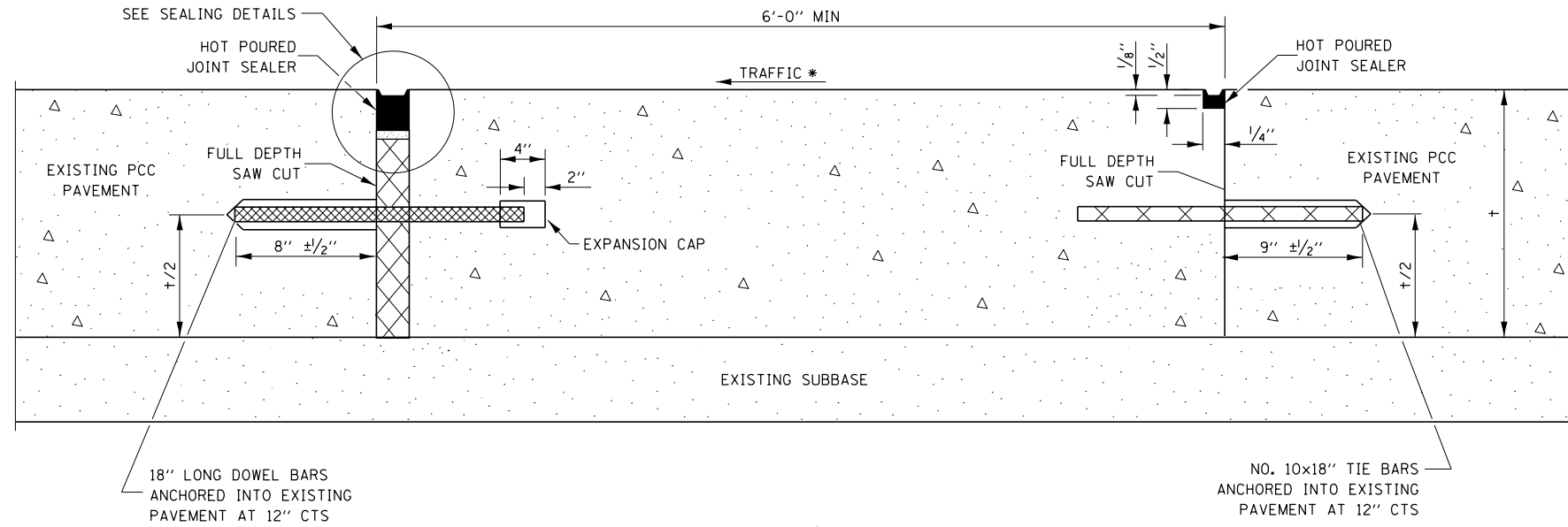


**SEALING DETAIL**

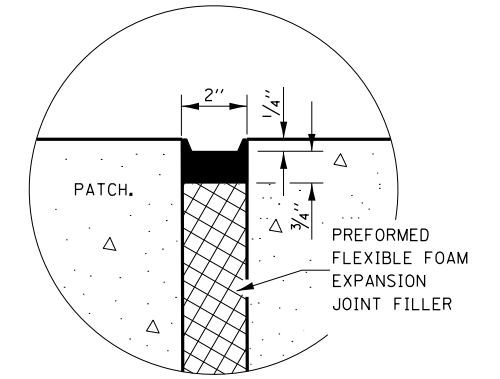
- NOTES:**
- \* EVERY THIRD INTERSECTION MUST BE TIED.
  - \*\* WHEN THE MINIMUM CLEARANCE CANNOT BE OBTAINED WITH THE TRANSVERSE REBAR ON TOP, THEN THE TRANSVERSE REBAR SHALL BE TIED TO THE BOTTOM OF THE LONGITUDINAL REBAR.
  - \*\*\* VARIABLES WHERE S<sub>1</sub> AND S<sub>2</sub> ARE 2 1/2" MIN. AND 12" MAX.
- LONGITUDINAL REINFORCEMENT SHALL MATCH SPACING OF EXISTING REINFORCEMENT.
- SUPPORT CHAIRS SHALL BE REQUIRED WHENEVER PATCH LENGTH EXCEEDS 6'-0"
- d = VERTICAL PLACEMENT OF EXISTING REINFORCEMENT.
- DIAMETER OF DRILLED HOLE SHALL BE THE BAR + 3/4"



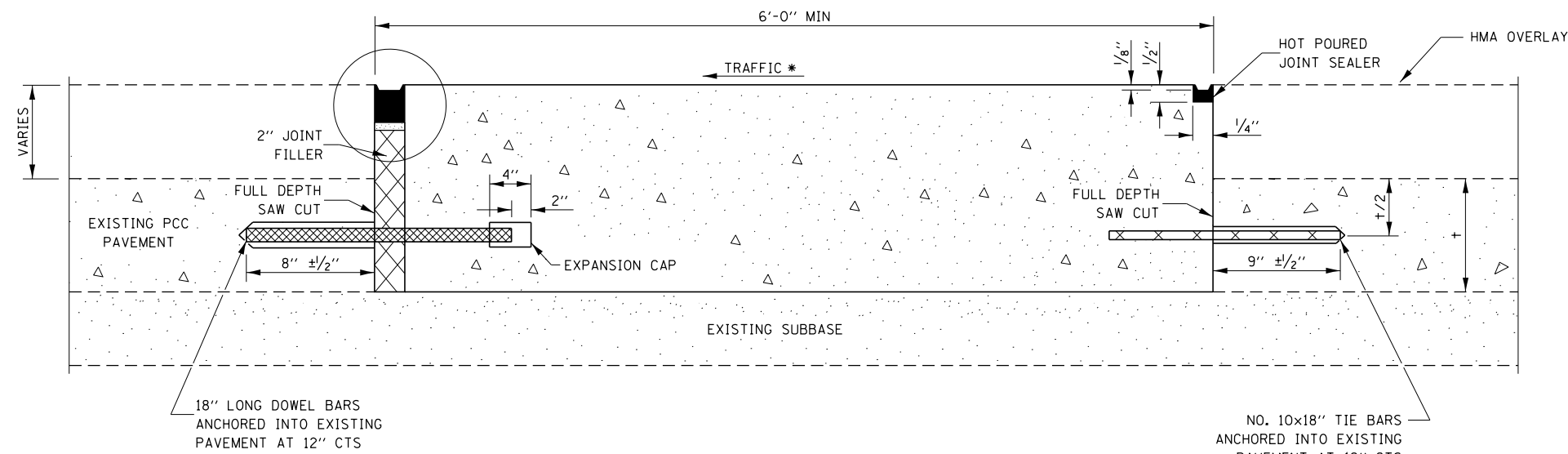




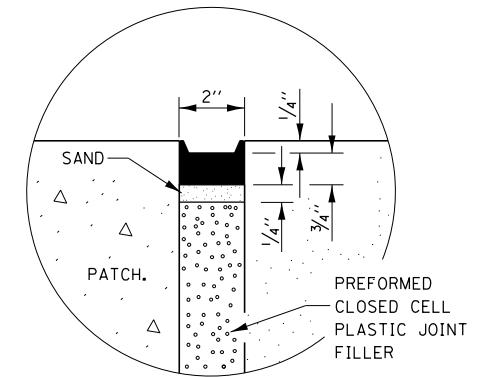
**METHOD I**  
(WITHOUT HMA OVERLAY)



**SEALING DETAIL**



**METHOD II**  
(WITH HMA OVERLAY)

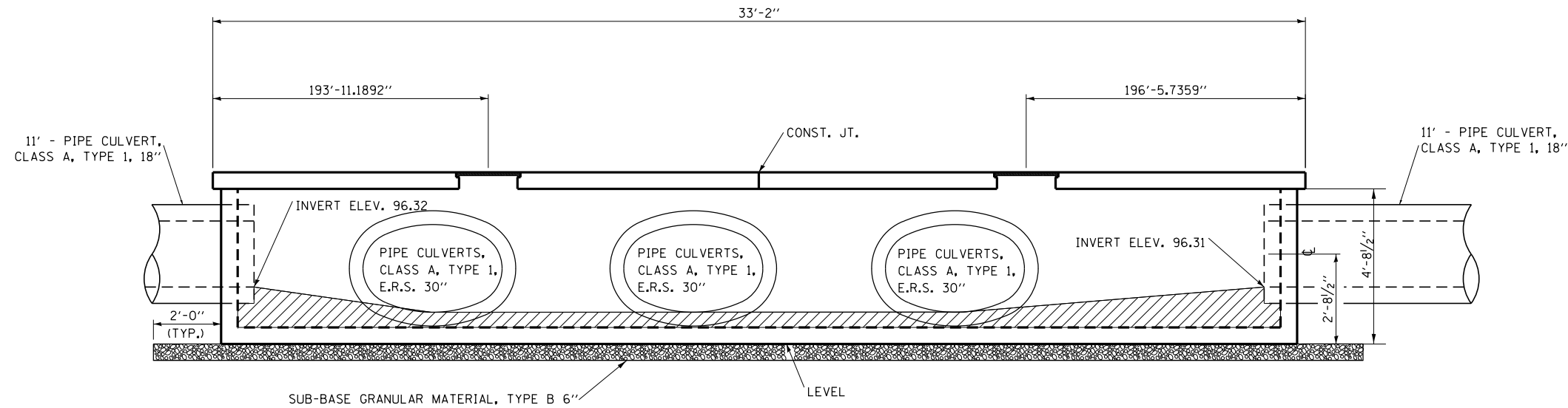


**SEALING DETAIL**

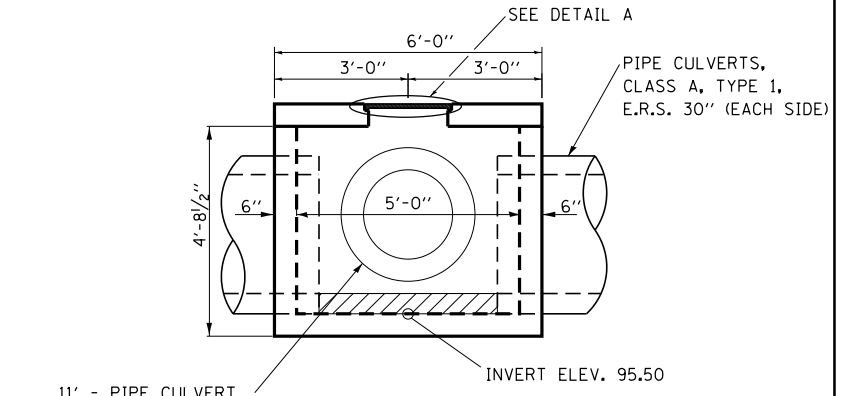
**NOTE**

\* WHEN RE-ESTABLISHING A TRANSVERSE EXPANSION JOINT ON A TWO-WAY ROAD, REVERSE THE ORIENTATION OF THE DOWEL BARS WITH RESPECT TO TRAFFIC FOR ONE OF THE PATCHES SUCH THAT THE JOINT WILL BE CONTINUOUS ACROSS BOTH LANES.

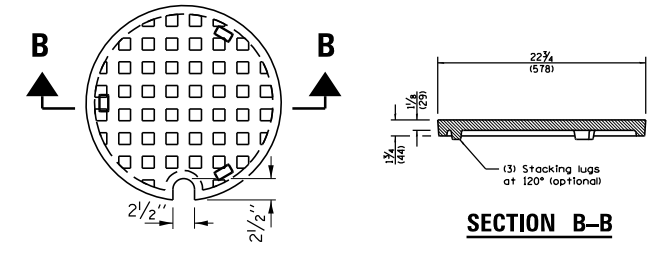
FILE NAME =	USER NAME = pletschr	DESIGNED -	REVISED -	<b>STATE OF ILLINOIS DEPARTMENT OF TRANSPORTATION</b>	<b>CLASS B PATCHING DETAILS</b>	F.A.I. RE.	SECTION	COUNTY	TOTAL SHEETS	SHEET NO.	
pw:\IL\084EBIDINTEG.illinois.gov\PIDOT\Documents\DOT Offices\District 3\Projects\0366\Drawings\EA0\Sheets\03xxxx-shr-cover.dwg	PLotted SCALE = 100.0000' / in.	CHECKED -	REVISED -			57	(46, 38-11C)	IROQUOIS	25	18	
	PLotted DATE = 6/2/2016	DATE -	REVISED -			CONTRACT NO. 66F54					
						FED. ROAD DIST. NO.	ILLINOIS FED. AID PROJECT				



**ELEVATION**

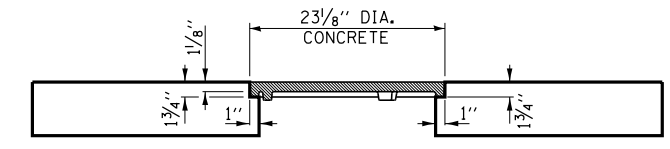


**SECTION A-A  
SHOWING OUTLINE**



**SECTION B-B**

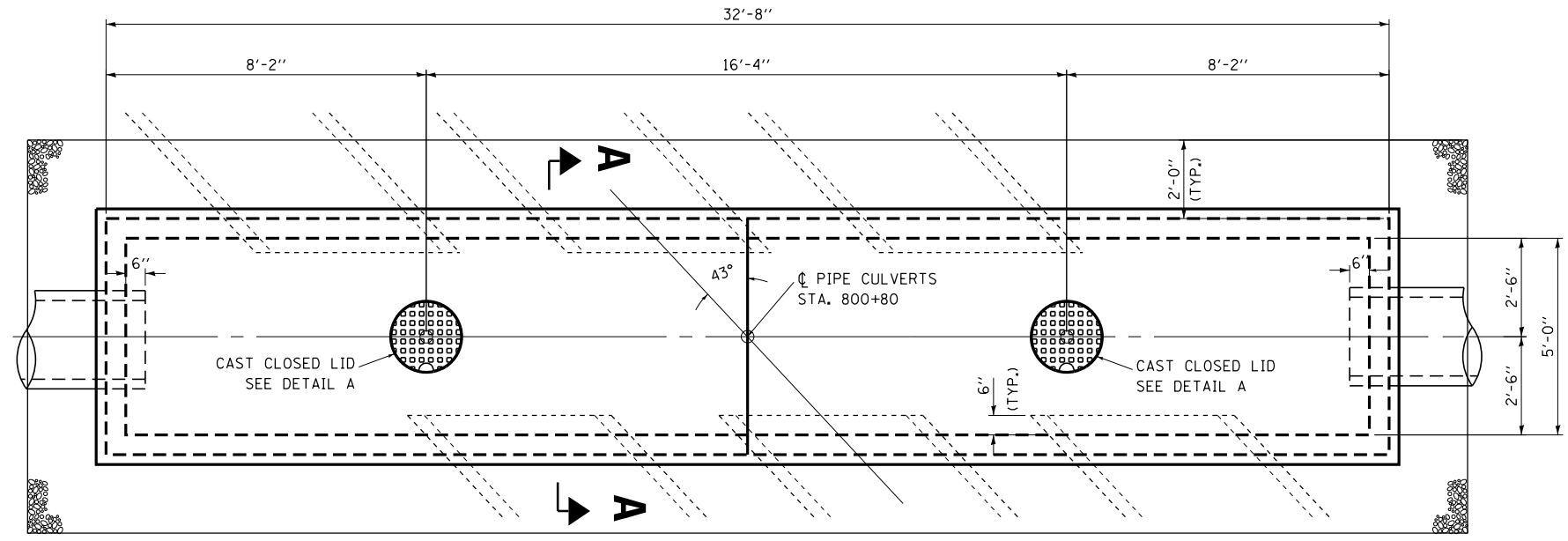
**CAST CLOSED LID  
GRAY IRON**



**DETAIL A**

**BILL OF MATERIAL**

CAST CLOSED LID	EACH	2
-----------------	------	---



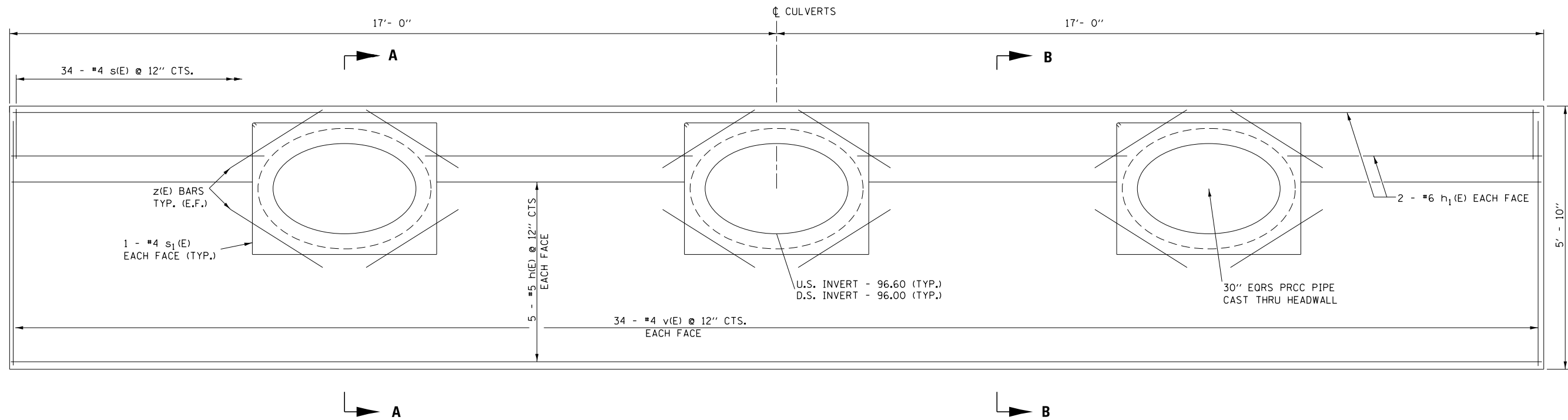
**PLAN AT MEDIAN**

**QUANTITIES SHOWN FOR INFORMATION ONLY**

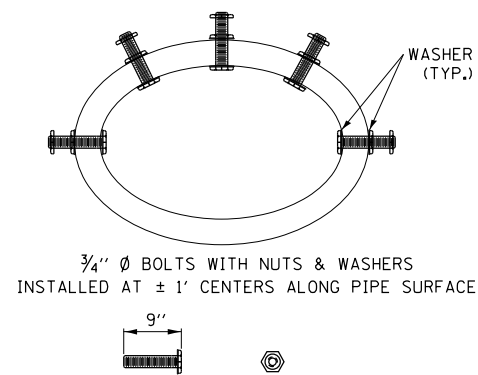
FILE NAME =	USER NAME = pletschr	DESIGNED - RW	REVISED -	<b>STATE OF ILLINOIS DEPARTMENT OF TRANSPORTATION</b>	<b>DRAINAGE STRUCTURE NO. 1 CAST-IN-PLACE</b>	F.A.I. R.E. =	SECTION	COUNTY	TOTAL SHEETS	SHEET NO.	
pw\11084EBIDINTEG.illinois.gov\PI\DOT\Documents\DOT Offices\District 3\Projects\0366\Drawings\CA\RW\Drawings\03xxxx-shr-cover.dwg	PLLOT SCALE = 100.0000' / in.	CHECKED - EP	REVISED -			57	(46,38-1)C	IROOQUIS	25	19	
Default	PLLOT DATE = 6/2/2016	DATE - 5/31/2016	REVISED -			CONTRACT NO. 66F54					
SCALE: SHEET 1 OF 3 SHEETS STA. TO STA.						ILLINOIS FED. AID PROJECT					



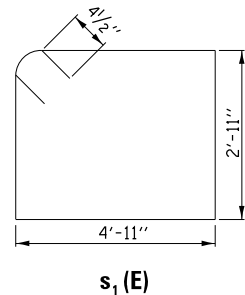
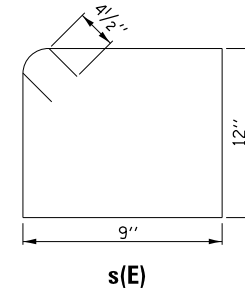
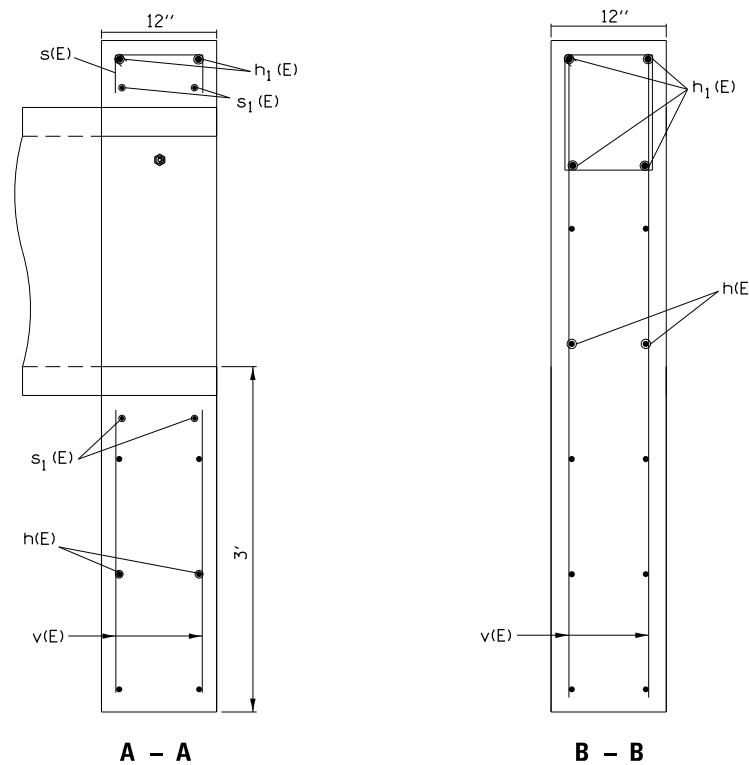




NOTE: CUT REINFORCEMENT BARS TO PROVIDE 1/2" CLEARANCE AROUND PIPES.



HEADWALL ANCHOR DETAIL

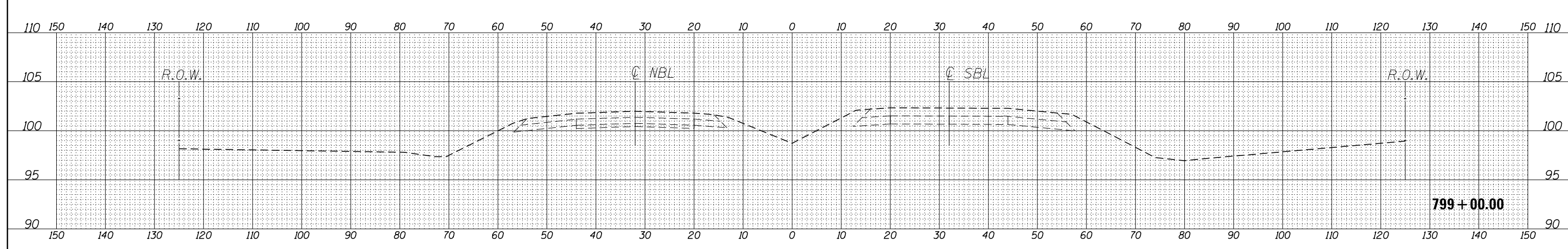
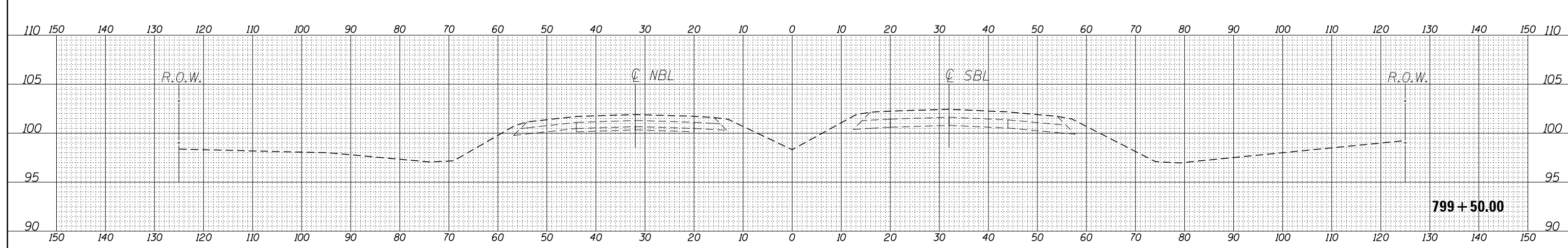
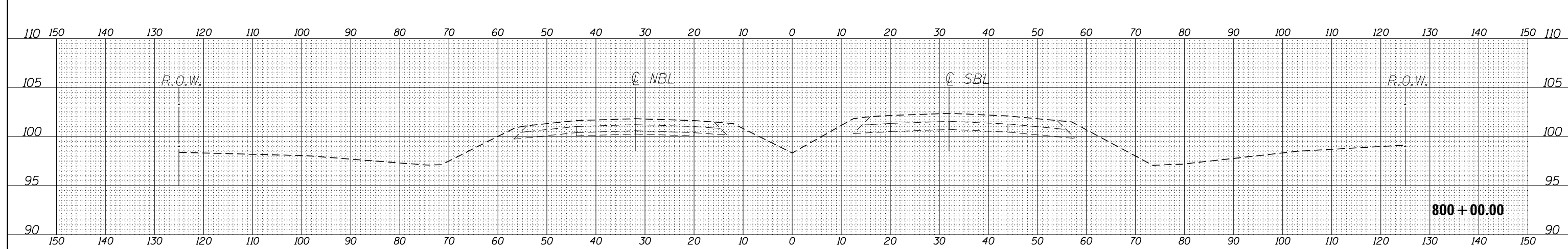
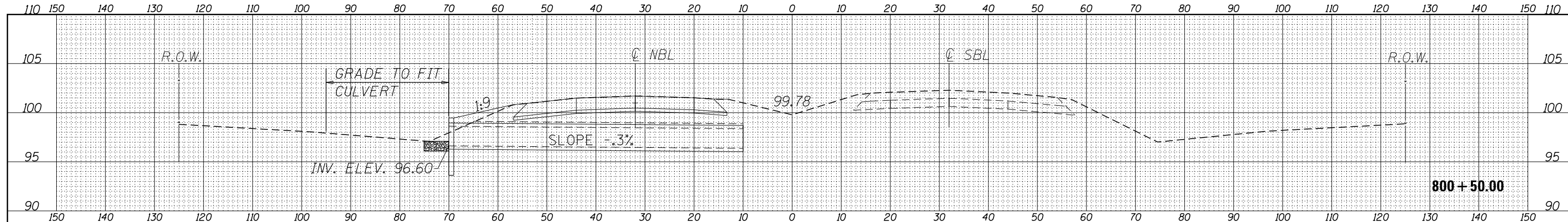


BILL OF MATERIAL FOR 1 HEADWALL

Bar	No.	Size	Length	Shape
h	10	#5	33'-9"	—
h1	4	#6	33'-9"	—
s	34	#4	4'-3"	□
s1	6	#4	16'-5"	□
v	68	#4	5'-7"	—
z	24	#4	2'-5"	—
Concrete Box Culvert			Cu. Yd.	10
Reinforcement Bars, Epoxy Coated			Pound	1010

DATE	
BY	
FINAL SURVEY	SURVEYED
NOTE BOOK	PLOTTED
NO.	TEMPLATE
	AREAS CHECKED

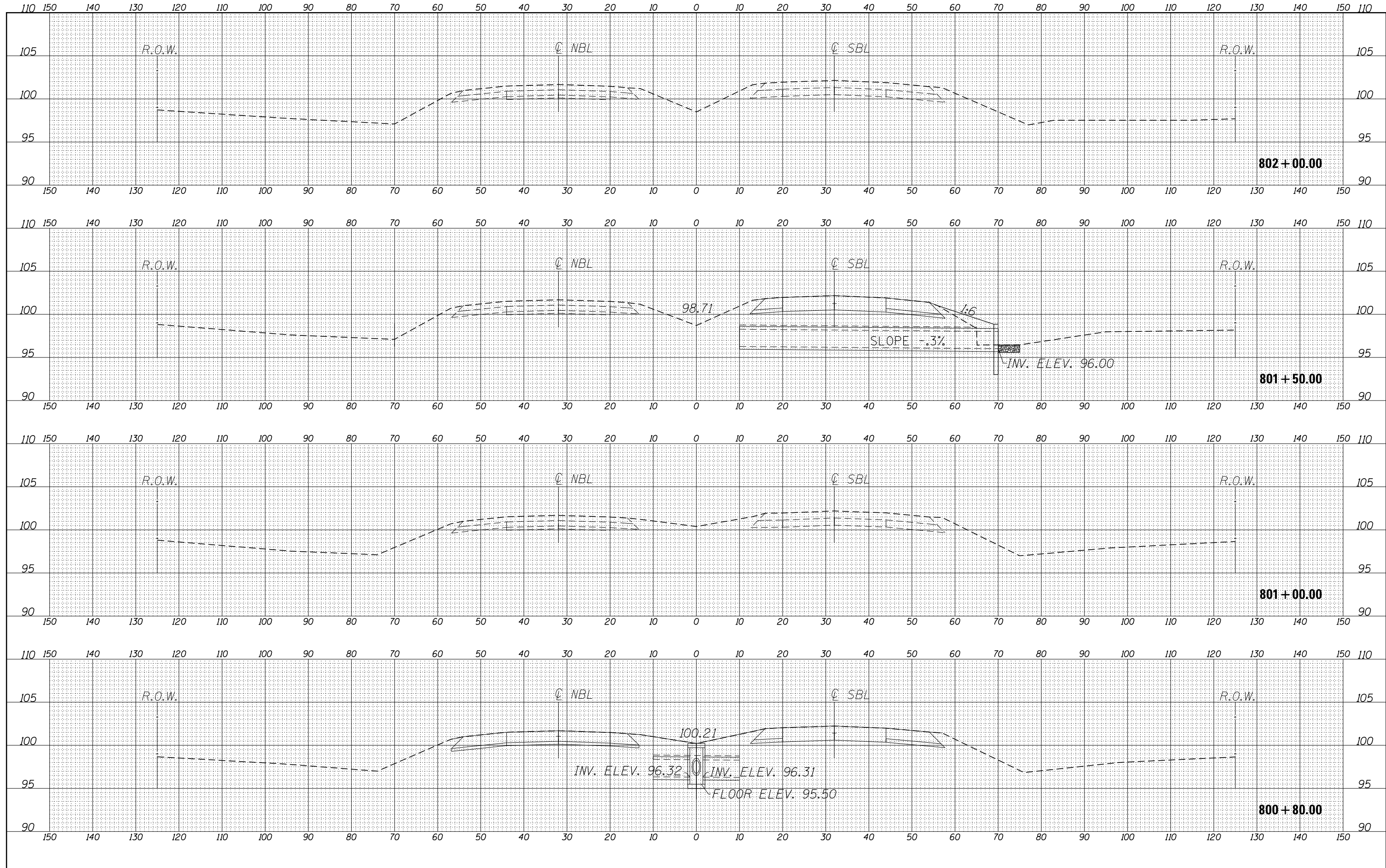
DATE	
BY	
ORIGINAL SURVEY	SURVEYED
NOTE BOOK	PLOTTED
NO.	TEMPLATE
	AREAS CHECKED



FILE NAME =	USER NAME = pletschr	DESIGNED - ECP	REVISED -	<b>STATE OF ILLINOIS DEPARTMENT OF TRANSPORTATION</b>	<b>CROSS SECTIONS</b>	F.A.I. RTE. = 57	SECTION = (46, 38-1C)	COUNTY = IROQUOIS	TOTAL SHEETS = 25	SHEET NO. = 23	
		CHECKED - RLW	REVISED -			CONTRACT NO. 66F54					
		DATE - 5/12/16	REVISED -			ILLINOIS FED. AID PROJECT					
PLOT SCALE = 20.0000' / in.						SCALE: _____		SHEET 1 OF 3 SHEETS		STA. 799+00.00 TO STA. 800+50.00	

DATE	
BY	
FINAL SURVEY	
PLOTTED	
NOTE BOOK	
AREAS CHECKED	

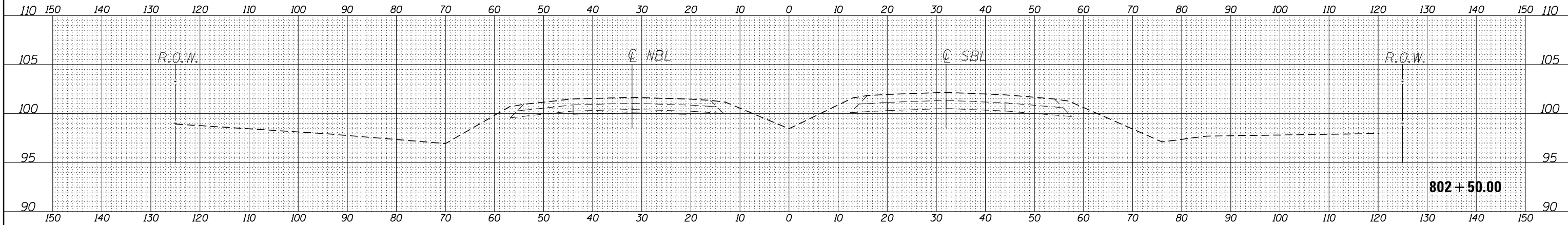
DATE	
BY	
ORIGINAL SURVEY	
PLOTTED	
NOTE BOOK	
AREAS CHECKED	





FINAL SURVEY	SURVEYED	DATE
NOTE BOOK NO.	PROJECT	BY
NO.	TEMPLATE	
	AREAS CHECKED	
	AREAS CHECKED	

ORIGINAL SURVEY	SURVEYED	DATE
NOTE BOOK NO.	PROJECT	BY
NO.	TEMPLATE	
	AREAS CHECKED	
	AREAS CHECKED	



FILE NAME =	USER NAME = pletschr	DESIGNED - ECP	REVISED - _____
p:\11084EBIDINTEG\Illinois.gov\PIDOT\Documents\DOT Offices\District 3\Projects\0366F54\CDRAWING\Drawings\0366F54-xsc.mxd		CHECKED - RLW	REVISED - _____
ExBL	PLOT SCALE = 20.0625' / in.	DATE - 5/12/16	REVISED - _____

**STATE OF ILLINOIS  
DEPARTMENT OF TRANSPORTATION**

<b>CROSS SECTIONS</b>			
SCALE: _____	SHEET 3 OF 3 SHEETS	STA. 802+50.00 TO STA. 802+50.00	

F.A.I. RTE.	SECTION	COUNTY	TOTAL SHEETS	SHEET NO.
57	(46, 38-1)C	IROQUOIS	25	25
CONTRACT NO. 66F54			ILLINOIS FED. AID PROJECT	