

07-29-2016 LETTING ITEM 044

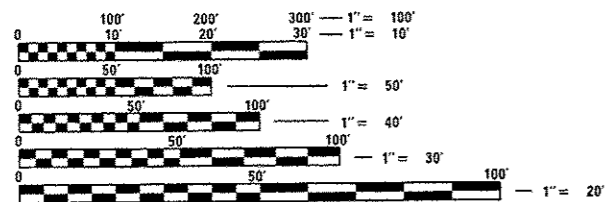
FOR INDEX OF SHEETS, SEE SHEET NO.

- 1 COVER SHEET
- 2 GENERAL NOTES /COMMITMENTS
- 3 SUMMARY OF QUANTITIES
- 4 TYPICAL SECTION
- 5 LINE DIAGRAM
- 6 SCHEDULE OF QUANTITIES
- 7 TRAFFIC CONTROL AND PROTECTION (SPECIAL) DETAIL
- 8 CORES AND PAVEMENT SETTLEMENT INFORMATION
- 9 SIDEWALK AND RETAINING WALL DETAIL
- 10 EXISTING CULVERT DETAIL
- 11 EXISTING ROADWAY PROFILE
- 12 EXISTING DRAINAGE DETAIL
- 13-16 EXISTING CROSS SECTION

HIGHWAY STANDARDS

701602-07
701801-06
701901-05

ADT = 13,900
MU = 1.62%
SU = 3.78%



FULL SIZE PLANS HAVE BEEN PREPARED USING STANDARD ENGINEERING SCALES. REDUCED SIZED PLANS WILL NOT CONFORM TO STANDARD SCALES. IN MAKING MEASUREMENTS ON REDUCED PLANS, THE ABOVE SCALES MAY BE USED.

J.U.L.I.E.
JOINT UTILITY LOCATION INFORMATION FOR EXCAVATION
1-800-892-0123
OR 811

PROJECT ENGINEER: CHRISTOPHER MAUSHARD 309-671-3453
PROJECT MANAGER: SOBHI LABABIDI/RAYMOND SAMARA 309-671-3460
CATALOG NO. 035403-00D
CONTRACT NO. 68D18

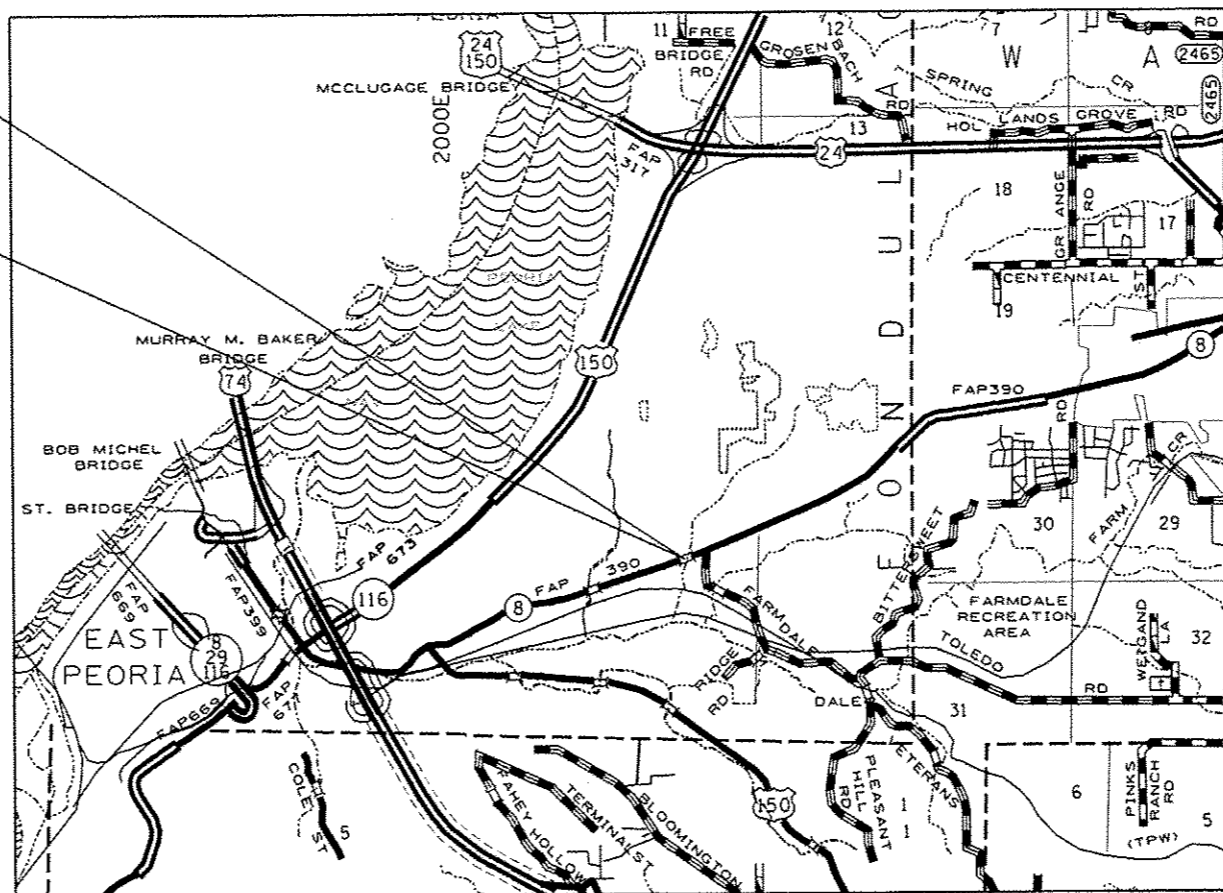
STATE OF ILLINOIS
DEPARTMENT OF TRANSPORTATION
DIVISION OF HIGHWAYS

**PROPOSED
HIGHWAY PLANS**

FAP ROUTE 399 (IL 8)
SECTION (37)I

TYPE of IMPROVEMENT CONTRACT MAINTENANCE
TAZEWELL COUNTY

C-94-061-16



PROJECT BEGINS
EBL STA. 7 + 350 (Metric)

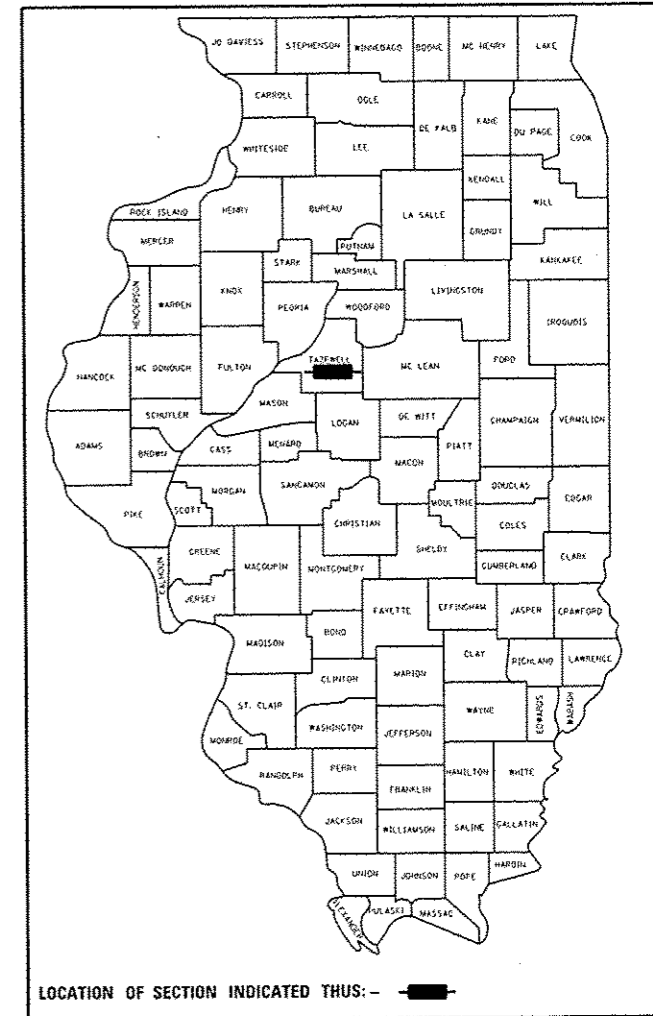
PROJECT ENDS
EBL STA. 7 + 388 (Metric)



GROSS LENGTH = 125 FT. = 0.023 MILE
NET LENGTH = 125 FT. = 0.023 MILE

F.A.P. RTE.	SECTION	COUNTY	TOTAL SHEETS	SHEET NO.
399	(37)I	TAZEWELL	16	1
		ILLINOIS	CONTRACT NO. 68D18	

D-94-027-16



PROJECT DESCRIPTION:
PAVEMENT JACKING OF THE EASTBOUND LANES ON IL 8 AT 0.23 MILE EAST OF ILLINI DRIVE IN EAST PEORIA

STATE OF ILLINOIS
DEPARTMENT OF TRANSPORTATION
DIVISION OF HIGHWAYS

SUBMITTED 5/20/16
Kendal G. Smith
REGION THREE ENGINEER

July 1, 2016
Maureen M. Addis, P.E.
ENGINEER OF DESIGN AND ENVIRONMENT

July 1, 2016
Omer Osman, P.E.
DIRECTOR OF HIGHWAYS, CHIEF ENGINEER

PRINTED BY THE AUTHORITY
OF THE STATE OF ILLINOIS

COMMITMENTS

No Commitments have been made for this project.

ENVIRONMENTAL REVIEWS

Prior to the use of any proposed borrow areas, use areas (temporary access roads, detours, run-arounds, etc.) and/or waste areas, the Contractor shall file the required environmental resource request surveys according to Section 107.22 of the Standard Specifications. These surveys are required in order for the Department to conduct cultural and biological resource surveys for the proposed site.

Prior to any waste materials being removed from the construction site the required environmental resource surveys will need to be obtained and filed by the Contractor. Excess waste products removed from the construction site shall be disposed of as required in Section 202.03 of the Standard Specifications.

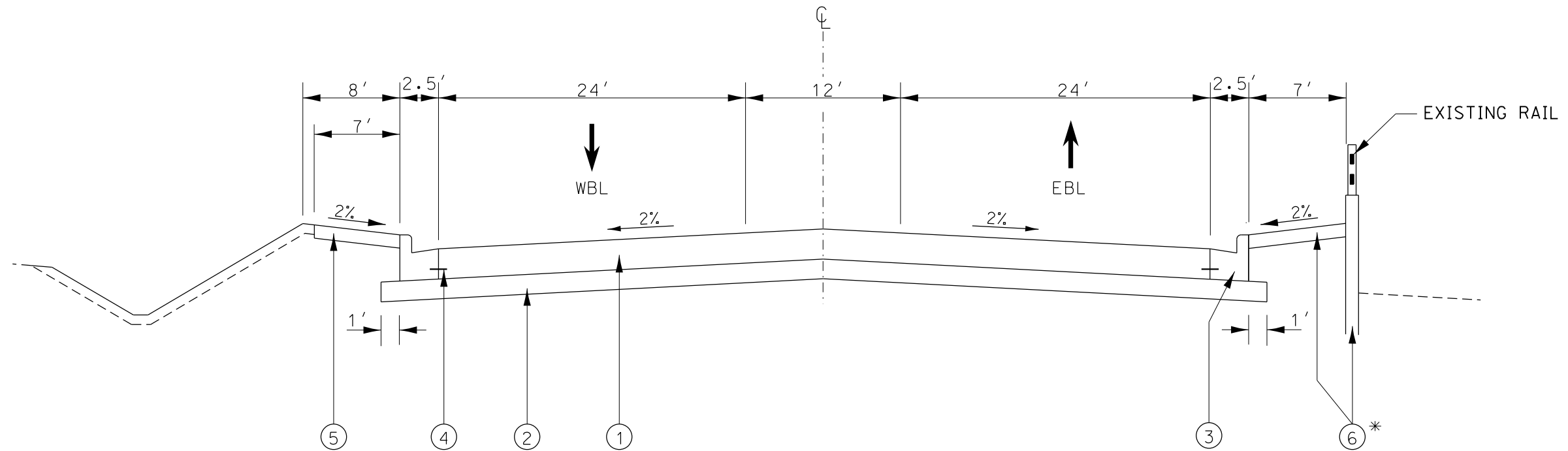
Any protruding metal bars shall be removed prior to the disposal of broken concrete at approved disposal sites.

The required environmental resource documentation shall include the following:

- * BDE Form 2289 (Environmental Survey Request)
- * A location map showing the size limits and location of the use area
- * Signed property owner agreement form-D4 PI0100
- * Color photographs depicting the use area
- * Borrow Area Entry Agreement form-D4 PI0101

Please note that a minimum of two weeks shall be allowed for the District to obtain the required environmental clearances.

FILE NAME = 68018.dgn	USER NAME = lababidiam	DESIGNED -	REVISED -	STATE OF ILLINOIS DEPARTMENT OF TRANSPORTATION	GENERAL NOTES /COMMITMENTS				F.A.P. RTE.	SECTION	COUNTY	TOTAL SHEETS	SHEET NO.
	PLOT SCALE = 100.0000' / 1" =	CHECKED -	REVISED -						399	(37)	TAZEWELL	16	2
Default	PLOT DATE = 5/26/2016	DATE -	REVISED -		SCALE:	SHEET	OF	SHEETS	STA.	TO STA.	ILLINOIS FED. AID PROJECT CONTRACT NO. 68018		



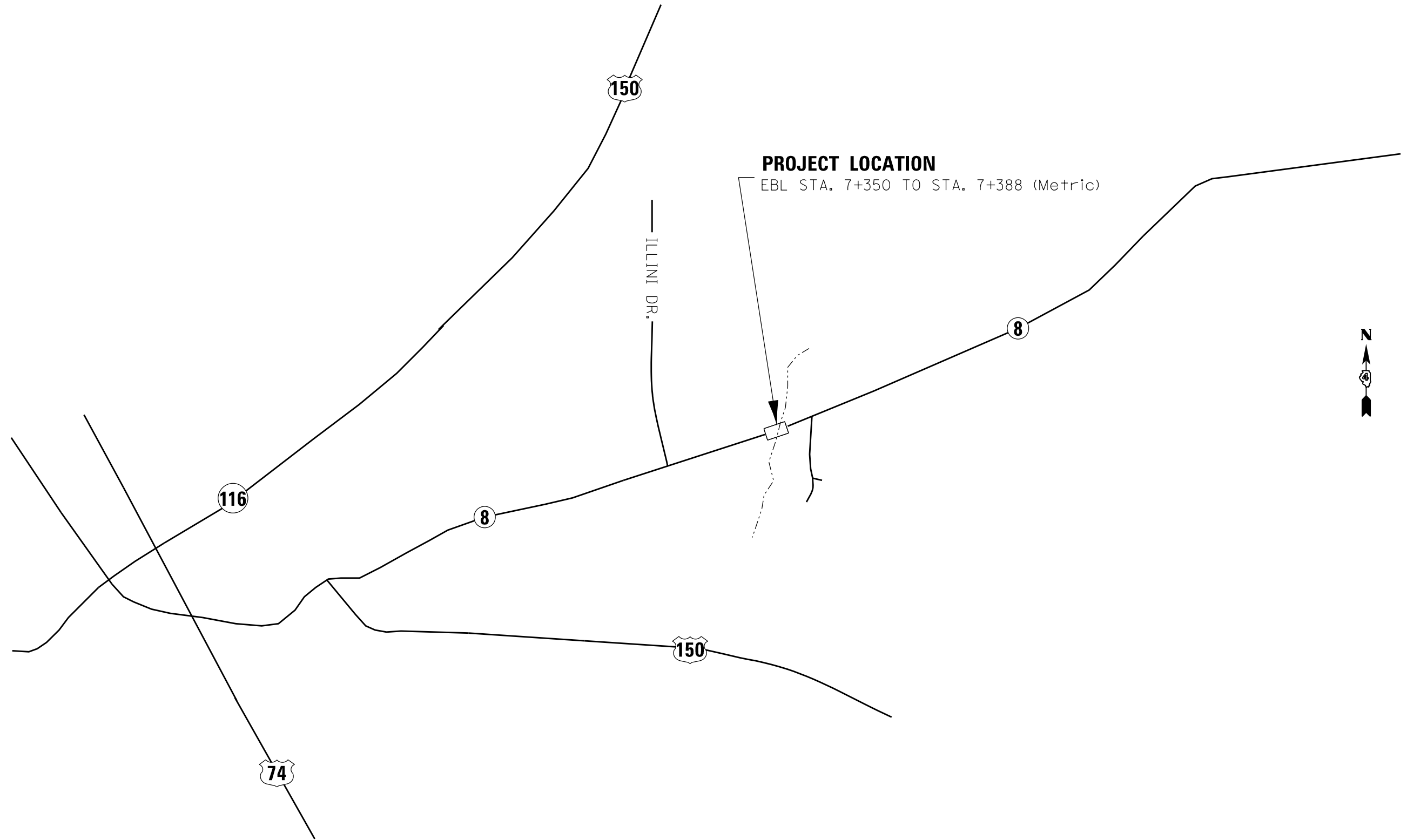
IL 8

- * 1. SEE SHEET 9 FOR SIDEWALK AND RETAINING WALL DETAIL
- 2. SIDEWALK OUTSIDE THE RETAINING WALL LIMITES IS 4" THICK

LEGEND

- ① EXISTING JOINTED CONCRETE PAVEMENT 10"
- ② EXISTING SUBBASE GRANULAR MATERIAL, TYPE B 12"
- ③ EXISTING COMBINATION CONCRETE CURB AND GUTTER, TYPE B-6-24
- ④ EXISTING TIE BAR
- ⑤ EXISTING CONCRETE SIDEWALK
- ⑥ EXISTING RETAINING WALL AND SIDEWALK

FILE NAME = 68D18.dgn	USER NAME = lababidism	DESIGNED -	REVISED -	STATE OF ILLINOIS DEPARTMENT OF TRANSPORTATION	TYPICAL SECTION				F.A.P. RTE.	SECTION	COUNTY	TOTAL SHEETS	SHEET NO.
	PLOT SCALE = 100.0000' / 1" =	DRAWN -	REVISED -		399	(37)I	TAZEWELL	16	4				
Default	PLOT DATE = 5/20/2016	CHECKED -	REVISED -	SCALE:	SHEET	OF	SHEETS	STA.	TO	STA.	ILLINOIS FED. AID PROJECT		
		DATE -	REVISED -								CONTRACT NO. 68D18		



PROJECT LOCATION
EBL STA. 7+350 TO STA. 7+388 (Metric)

ILLINI DR.



FILE NAME = 68D18.dgn	USER NAME = lababidism	DESIGNED -	REVISED -	STATE OF ILLINOIS DEPARTMENT OF TRANSPORTATION	LINE DIAGRAM				F.A.P. RTE.	SECTION	COUNTY	TOTAL SHEETS	SHEET NO.
Default	PLOT SCALE = 100.0000' / in.	DRAWN -	REVISED -		SCALE:	SHEET	OF	SHEETS	STA.	TO STA.	(37)I	16	5
	PLOT DATE = 5/20/2016	CHECKED -	REVISED -		CONTRACT NO. 68D18								
		DATE -	REVISED -		ILLINOIS FED. AID PROJECT								

LOCATION	FOAM, EXPANDING POLYURETHANE, HIGH-DENSITY
	POUND*
EBL STA. 7+350 TO STA. 7+388 (Metric)	25000
TOTAL	25000

* ESTIMATED QUANTITY, FINAL QUANTITY WILL BE DETERMINED IN THE FIELD

LOCATION	TRAFFIC CONTROL AND PROTECTION (SPECIAL)
	L SUM
JOBSITE	1
TOTAL	1

LOCATION	TRAFFIC CONTROL AND PROTECTION STANDARD 701801
	L SUM
JOBSITE	1
TOTAL	1

LOCATION	CHANGEABLE MESSAGE SIGN *
	CAL DA
JOBSITE	14
TOTAL	14

* TWO MESSAGE SIGNS 7 DAYS EACH

LOCATION	MOBILIZATION
	L SUM
JOBSITE	1
TOTAL	1

Traffic Control and Protection (Special)

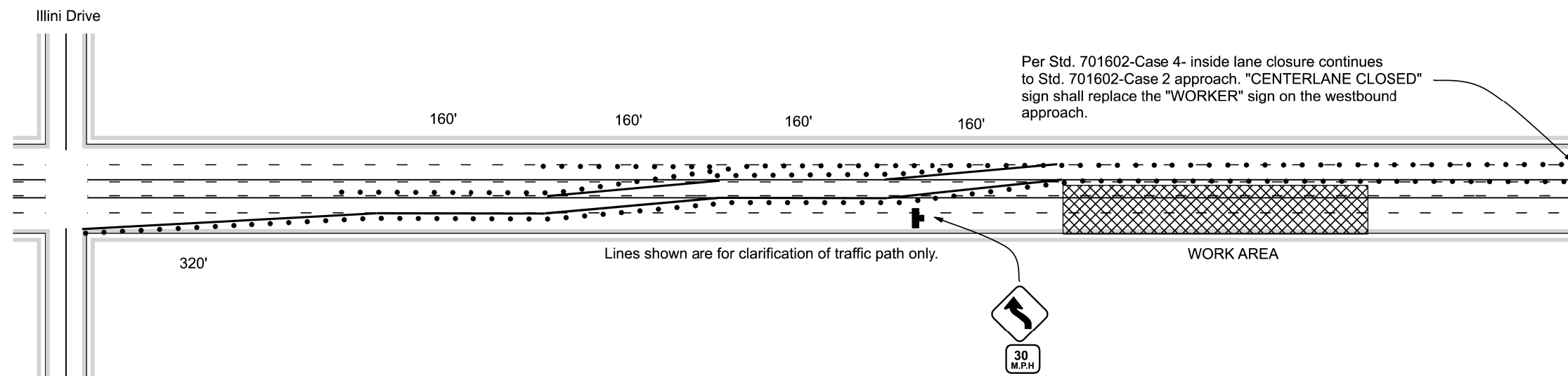
Device spacing and signage shall be as shown on Standard 701602-Case 2 and Case 4 and in addition to signage shown on this detail.

Standard 701602-Case 4 shall be used during sidewalk work.

All devices shall be removed at the end of the day- prior to dusk if cones used.

All advisory speed placards shall be 30 mph.

All work inclusive of this detail and Highway Standards listed shall be inclusive in the Traffic Control and Protection (Special) pay item.



FILE NAME = 68D18.dgn	USER NAME = lababidism	DESIGNED -	REVISED -	STATE OF ILLINOIS DEPARTMENT OF TRANSPORTATION	TRAFFIC CONTROL AND PROTECTION (SPECIAL) DETAIL	F.A.P. RTE. 399	SECTION (37)I	COUNTY TAZEWELL	TOTAL SHEETS 16	SHEET NO. 7		
Default	PLOT SCALE = 100.0000' / 1in.	CHECKED -	REVISED -			SCALE: SHEET OF SHEETS STA. TO STA.		CONTRACT NO. 68D18				
	PLOT DATE = 5/20/2016	DATE -	REVISED -			ILLINOIS FED. AID PROJECT						

Core 1				
mm/in	Inches	in/blow	mm/blow	IBV
25.4	11.0-15.0	0.4	10.16	21.88
	15-17	0.2	5.08	52.37
	17-19	0.2	5.08	52.37
	19-20.5	0.15	3.81	75.23
	20.5-22	0.17	4.318	64.26
	22-24	0.4	10.16	21.88
	24-26.5	0.50	12.7	16.52
	26.5-28.5	0.4	10.16	21.88
	28.5-32	0.7	17.78	10.82
	32-36	0.8	20.32	9.14
	36-40.5	0.9	22.86	7.88
	40.5-45.5	1	25.4	6.90
	45.5-49.5	0.8	20.32	9.14
	49.5-53	0.35	8.89	25.89
	53-59.5	0.325	8.255	28.42
	59.5-67	0.375	9.525	23.73
	67-74	0.35	8.89	25.89

Core 3				
mm/in	Inches	in/blow	mm/blow	IBV
25.4	12.5-16.5	0.4	10.16	21.88
	16.5-18.8	0.23	5.842	43.92
	18.8-21	0.22	5.588	46.45
	21-23.4	0.24	6.096	41.63
	23.4-28	0.46	11.684	18.35
	28-34	0.6	15.24	13.13
	34-38	0.40	10.16	21.88
	38-41.5	0.35	8.89	25.89
	41.5-45	0.35	8.89	25.89
	45-50	0.5	12.7	16.52
	50-54.6	1.15	29.21	5.79
	54.6-57.5	0.97	24.638	7.17
	57.5-59.8	0.46	11.684	18.35
	59.8-66	0.62	15.748	12.60
	66-73	0.7	17.78	10.82
	73-79	0.6	15.24	13.13

Core 2				
mm/in	Inches	in/blow	mm/blow	IBV
25.4	12.8-19.5	0.67	17.018	11.43
	19.5-22	0.5	12.7	16.52
	22-27	1	25.4	6.90
	27-30	1	25.4	6.90
	30-32.5	1.25	31.75	5.21
	32.5-35	0.5	12.7	16.52
	35-38.4	0.85	21.59	8.47
	38.4-41	1.3	33.02	4.96
	41-45.5	1.5	38.1	4.14
	45.5-48.5	1.5	38.1	4.14
	48.5-51.5	1.5	38.1	4.14
	51.5-54	1.25	31.75	5.21
	54-57	1	25.4	6.90
	57-61.5	1.5	38.1	4.14
	61.5-64	2.5	63.5	2.18
	64-66	1	25.4	6.90
	66-70	2	50.8	2.88
	70-74.5	2.25	57.15	2.49
	74.5-77.5	1	25.4	6.90
	77.5-79	0.75	19.05	9.92
	79-81	0.4	10.16	21.88

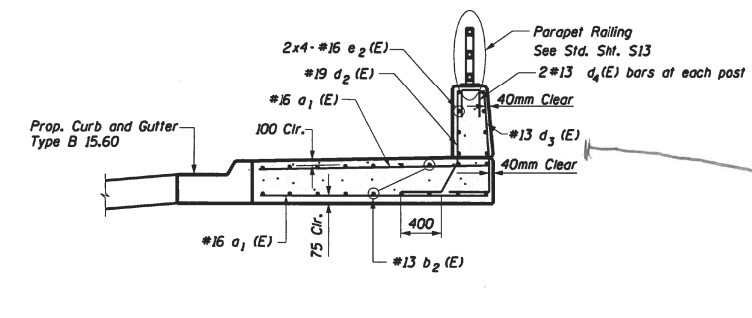
Core 4				
mm/in	Inches	in/blow	mm/blow	IBV
25.4	15.7-22.5	0.68	17.272	11.22
	22.5-27	1.5	38.1	4.14
	27-33	2	50.8	2.88
	33-37	1.33	33.782	4.82
	37-41	1	25.4	6.90
	41-48	2.35	59.69	2.35
	48-52.5	4.5	114.3	1.04
	52.5-56	1.75	44.45	3.41
	56-60	1.33	33.782	4.82
	60-64	4	101.6	1.21
	64-66.5	2.5	63.5	2.18
	66.5-71.5	1.67	42.418	3.62
	71.5-76	1.5	38.1	4.14
	76-79	1.5	38.1	4.14
	79-80.5	1.5	38.1	4.14
	80.5-82.5	2	50.8	2.88

PAVEMENT SETTLEMENT INFORMATION *					
OFFSET FROM INLET	DRIVING LANE	DRIVING LANE	PASSING LANE	BORING LOCATION DRIVING LANE	BORING LOCATION PASSING LANE
	RT EDGE	LT EDGE	LT EDGE		
FEET	INCH	INCH	INCH		
-70	0	0	0		
-65	0	0	0		
-60	0	0	0		
-55	0	0	0		
-50	0.25	0.5	0		
-45	0.75	1.25	1		
-40	1	1.5	2	CORE 1	CORE 3
-35	1	1.5	1.33		
-30	1	0.75	0.67		
-25	0.75	0.75	0		
-20	0.875	0	0		
-15	0.875	0	0		
-10	1.75	0.5	0		
-5	2.625	1.25	0	CORE 2	
0	3.25	1.5	0	INLET LOCATION	
5	4	2.5	0		
10	3.5	2.5	1		CORE 4
15	2.375	1.5	2		
20	1.5	1	1.33		
25	1.5	1	0.67		
30	1.125	0.75	0		
35	1	0.625	0		
40	0.875	0.5	0		
45	0.75	0	0		
50	0.5	0	0		
55	0	0	0		
60	0	0	0		

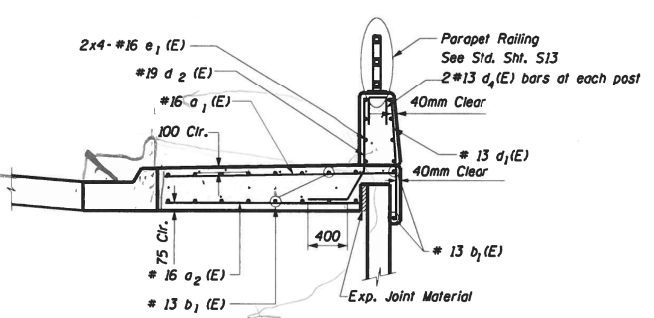
* TO BE VERIFIED BY THE CONTRACTOR

Core 1 had 1" void
Core 2 had 1.25" void
Core 3 had 1" void
Core 4 had 4" void

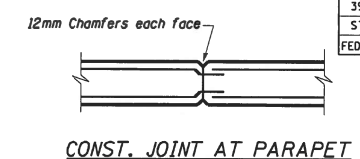
F.A.P. RTE.	SECTION	COUNTY	TOTAL SHEETS	SHEET NO.
399	37R-1(37-A)	TAZEWELL	16	9
STA 5+10.000		TO STA 7+663.000		
FED. ROAD DIST. NO. 4		ILLINOIS FED. AID PROJECT		
S11 of 522				



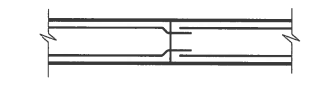
PARAPET SECTION AT CULVERT



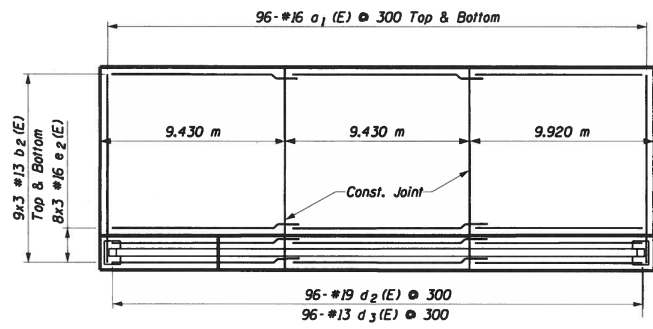
PARAPET SECTION AT WALL
Mechanically, Stabilized Earth Retaining Wall H



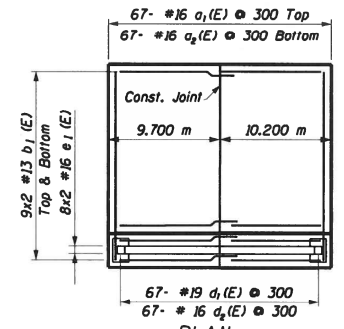
CONST. JOINT AT PARAPET



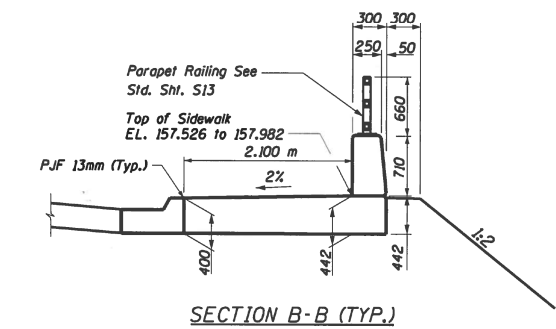
CONST. JOINT AT SIDEWALK



PLAN
Parapet Wall at Culvert
Sta. 7+338.220 TO Sta 7+367.000

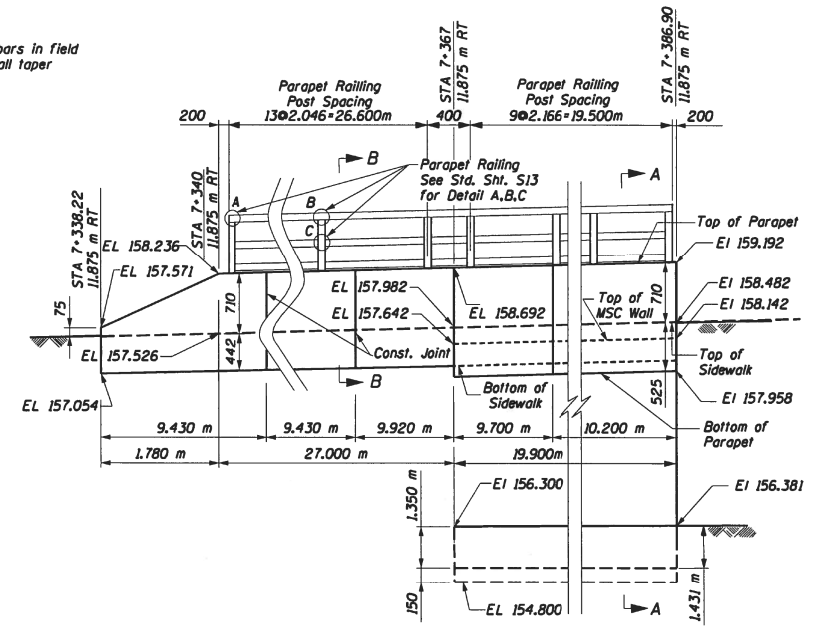


PLAN
Parapet Wall at Wall
Mechanically, Stabilized Earth Retaining Wall H
Sta. 7+367.000 TO Sta 7+386.90

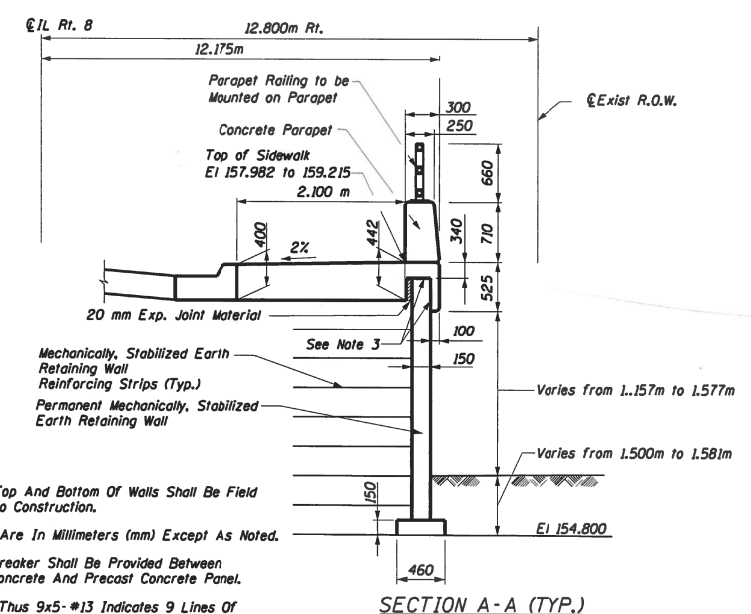


SECTION B-B (TYP.)

Notes:
Bend by (E) bars in field to match wall taper



ELEVATION - FRONT FACE
(Parapet Wall at Culvert and Mechanically, Stabilized Earth Retaining Wall H) Right Side (South)



SECTION A-A (TYP.)

Notes:

- All Grades At Top And Bottom Of Walls Shall Be Field Verified Prior To Construction.
- All Dimensions Are In Millimeters (mm) Except As Noted.
- Positive Bond Breaker Shall Be Provided Between Cast-In-Place Concrete And Precast Concrete Panel.
- Bars Indicated Thus 9x5-#13 Indicates 9 Lines Of Bars With 5 Lines Per Line.
- Reinforced Sidewalk will be paid for as Concrete Structure.

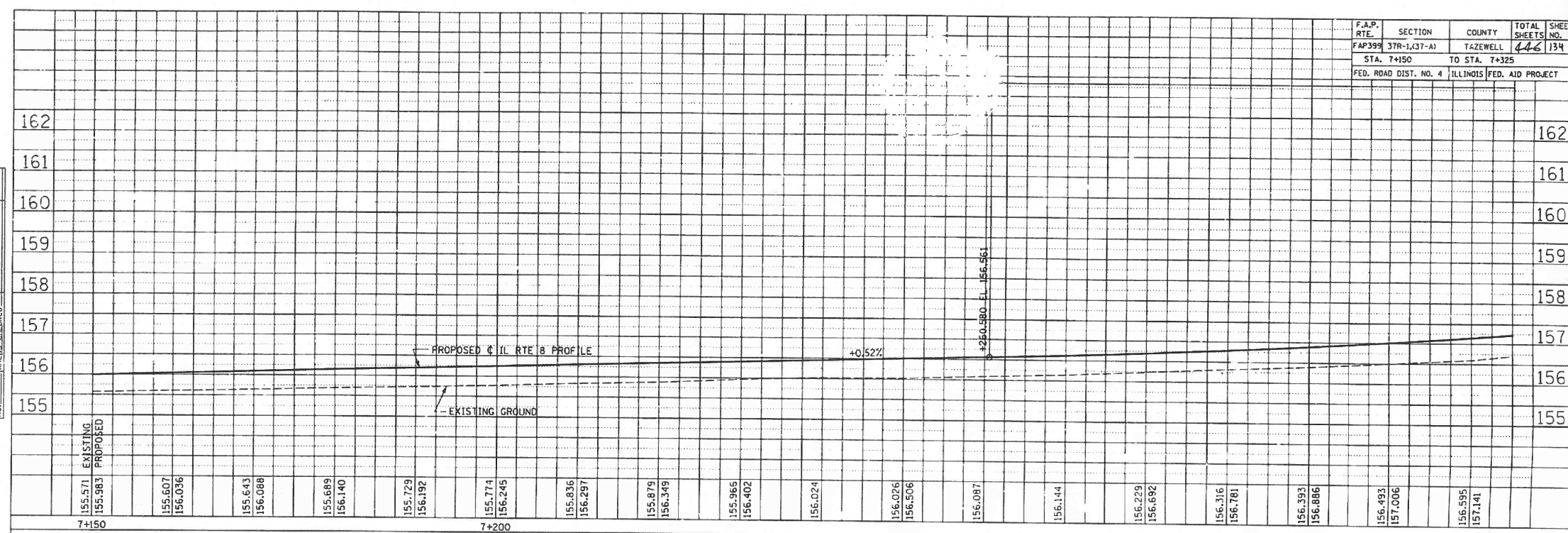
REVISIONS	
NAME	DATE

ILLINOIS DEPARTMENT OF TRANSPORTATION
ILLINOIS ROUTE 8 - SEGMENT 1
PARAPET WALL AT CULVERT
AND WALL H
SCALE: NTS DESIGN BY: AH DRAWN BY: CU
DATE: AUGUST, 2002 CHECKED BY: JW/JN

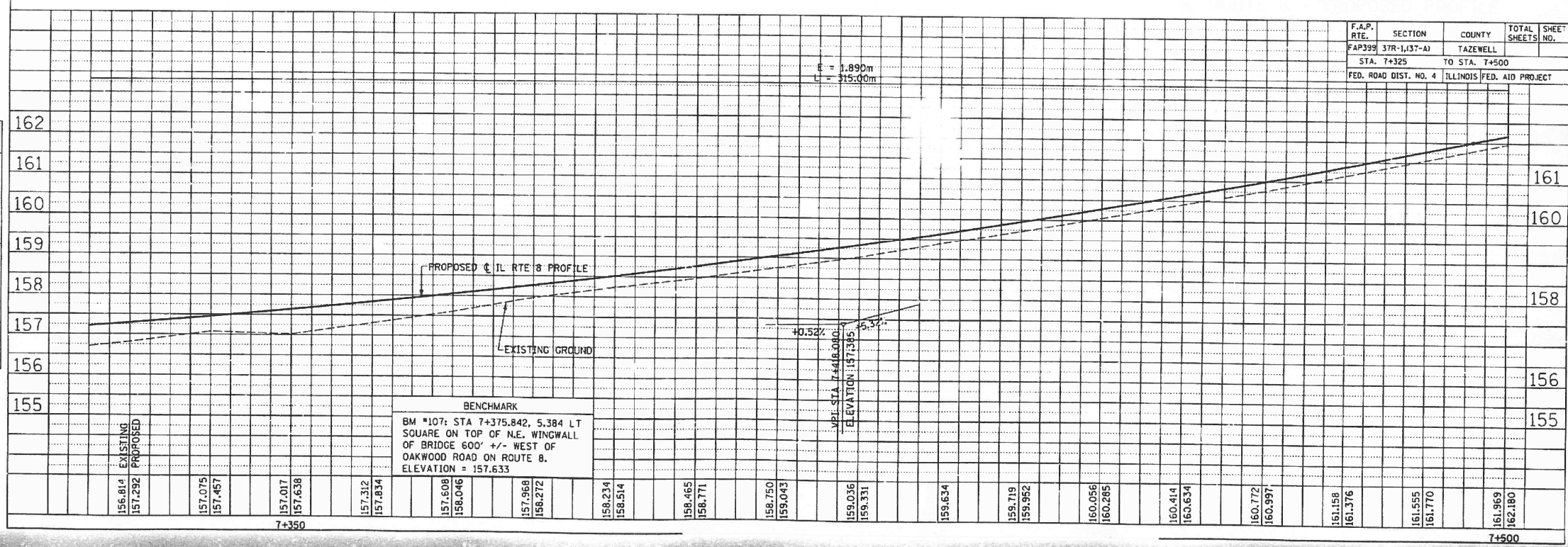
Engineers/Architects/Planners/Construction Managers
200 W. Monroe St. Chicago, IL 60606-5015

FINAL SURVEY	SURVEYED	BY	DATE
NOTE BOOK NO.	PLotted		
TEMPLATE NO.	AREAS CHECKED		

ORIGINAL SURVEY	SURVEYED	BY	DATE
NOTE BOOK NO.	PLotted		
TEMPLATE NO.	AREAS CHECKED		



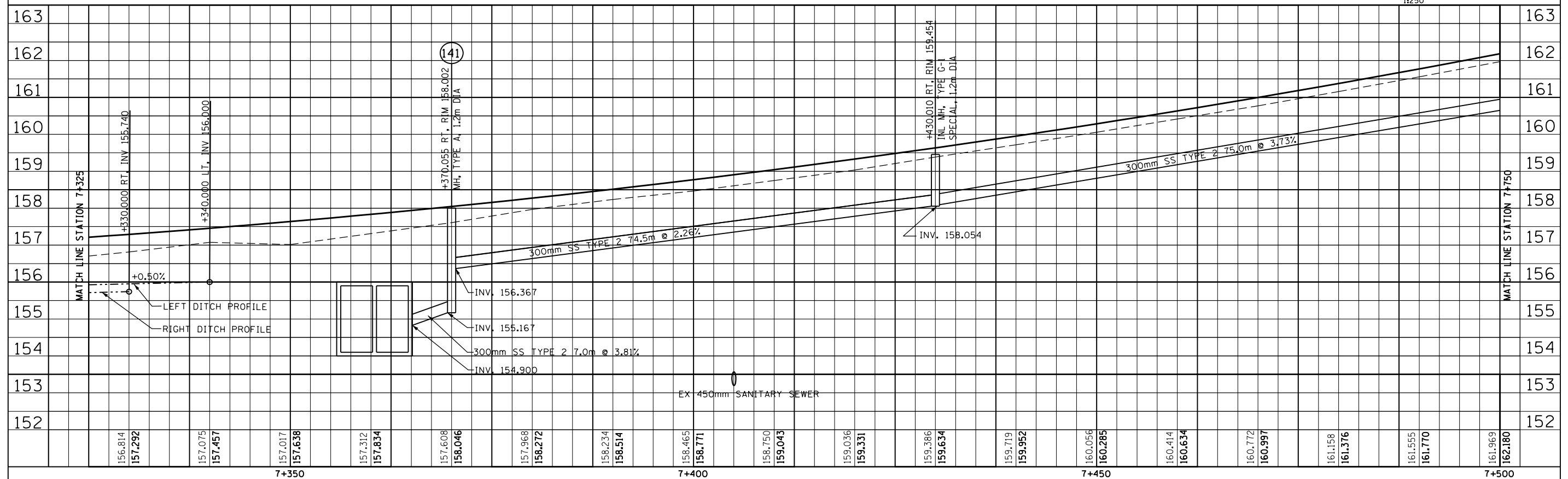
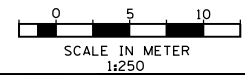
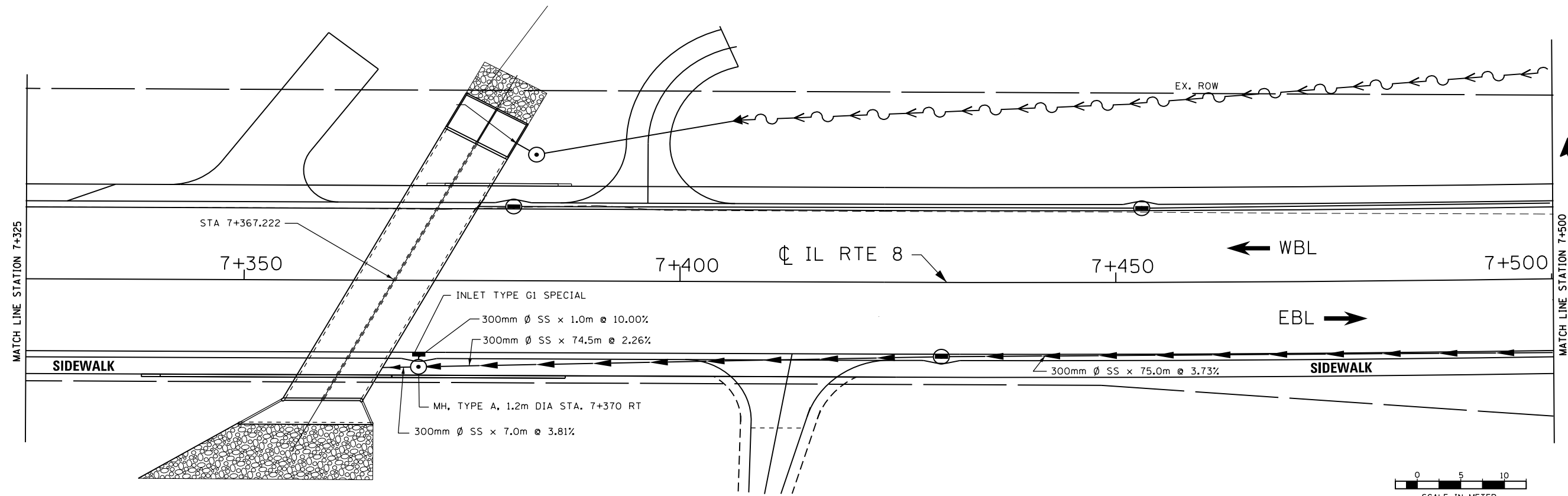
F.A.P. RTE.	SECTION	COUNTY	TOTAL SHEETS	SHEET NO.
FAP399	37R-1(37-A)	TAZEWELL	446	134
STA. 7+150		TO STA. 7+325		
FED. ROAD DIST. NO. 4		ILLINOIS FED. AID PROJECT		



F.A.P. RTE.	SECTION	COUNTY	TOTAL SHEETS	SHEET NO.
FAP399	37R-1(37-A)	TAZEWELL	446	134
STA. 7+325		TO STA. 7+500		
FED. ROAD DIST. NO. 4		ILLINOIS FED. AID PROJECT		

BENCHMARK
 BM #107: STA 7+375.842, 5.384 LT SQUARE ON TOP OF N.E. WINGWALL OF BRIDGE 600' +/- WEST OF OAKWOOD ROAD ON ROUTE 8. ELEVATION = 157.633

PR P PR L 8 6 FINAL SUBMITTAL



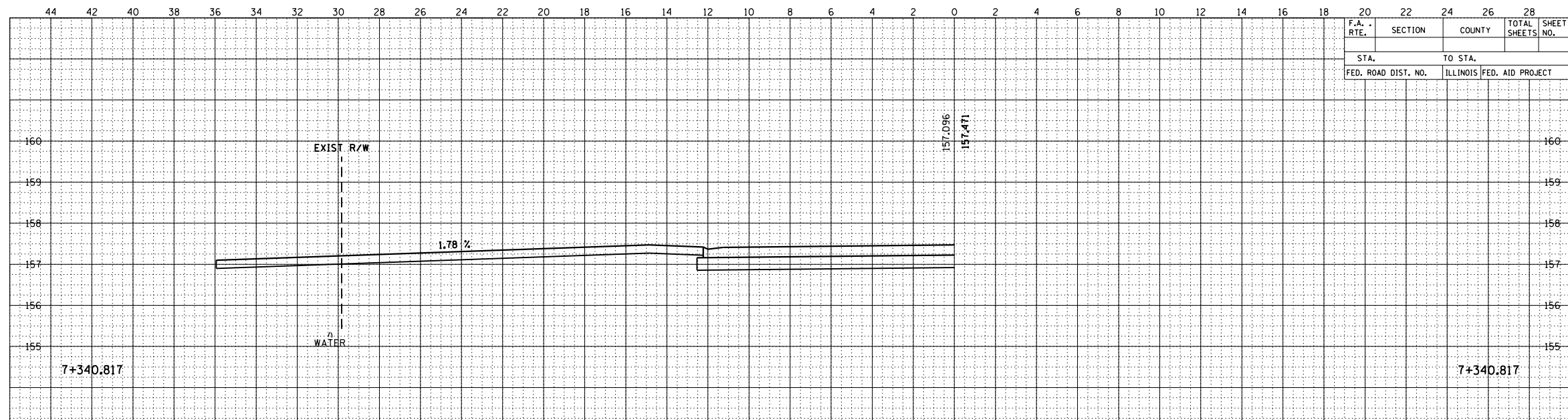
FILE NAME = 68D18.dgn	USER NAME = lababidism	DESIGNED -	REVISED -
Default	PLOT SCALE = 100.0000' / 1"	DRAWN -	REVISED -
	PLOT DATE = 5/20/2016	CHECKED -	REVISED -
		DATE -	REVISED -

**STATE OF ILLINOIS
DEPARTMENT OF TRANSPORTATION**

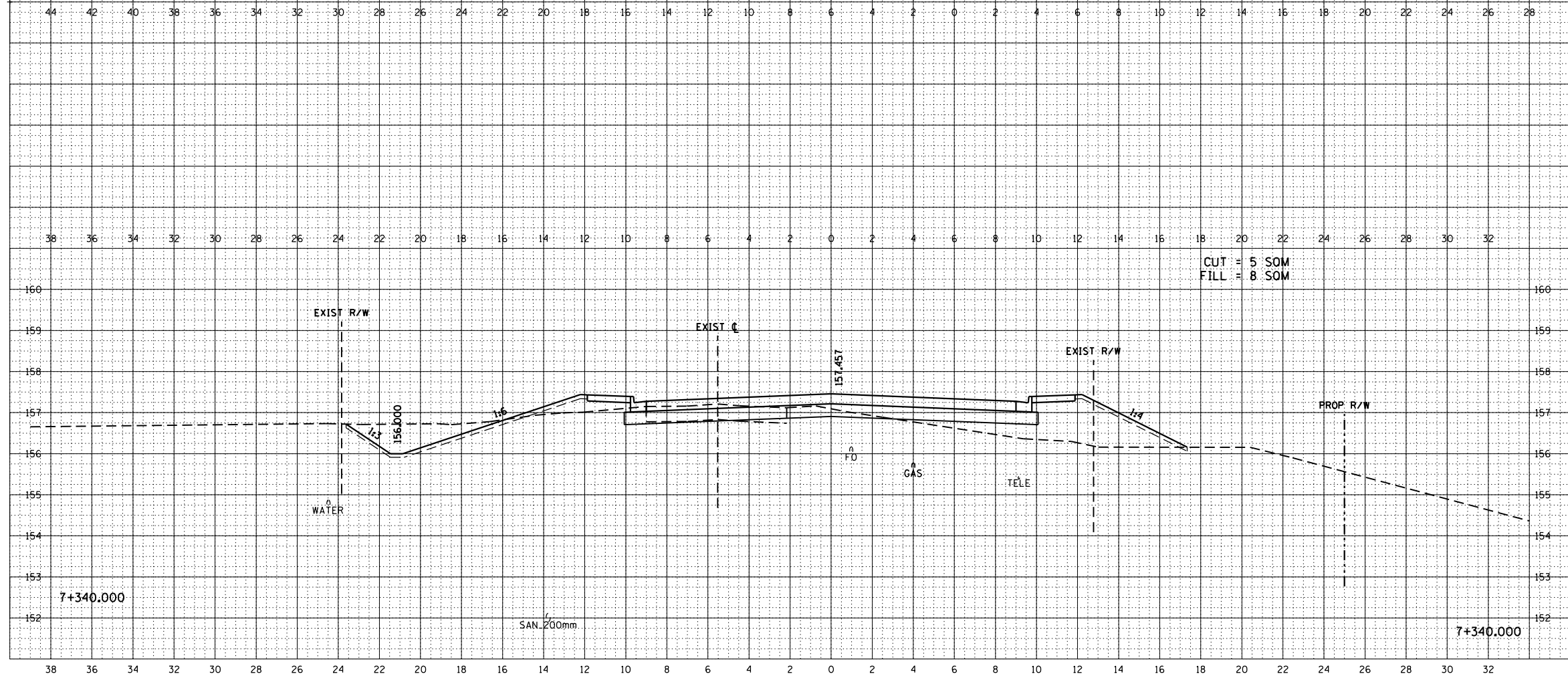
**EXISTING DRAINAGE DETAIL STA. 7+325 TO STA. 7+500
FOR INFORMATION ONLY**

SCALE: SHEET OF SHEETS STA. TO STA.

F.A.P. RTE. 399	SECTION (37)I	COUNTY TAZEWELL	TOTAL SHEETS 16	SHEET NO. 12
CONTRACT NO. 68D18				
ILLINOIS FED. AID PROJECT				



FINAL	SURVEYED	DATE
SHEET	PLOTTED	BY
NO. 1000	AREA	
	CHECKED	



ORIGINAL	SURVEYED	DATE
SHEET	PLOTTED	BY
NO. 1000	AREA	
	CHECKED	

FILE NAME = 68D18.dgn
Default

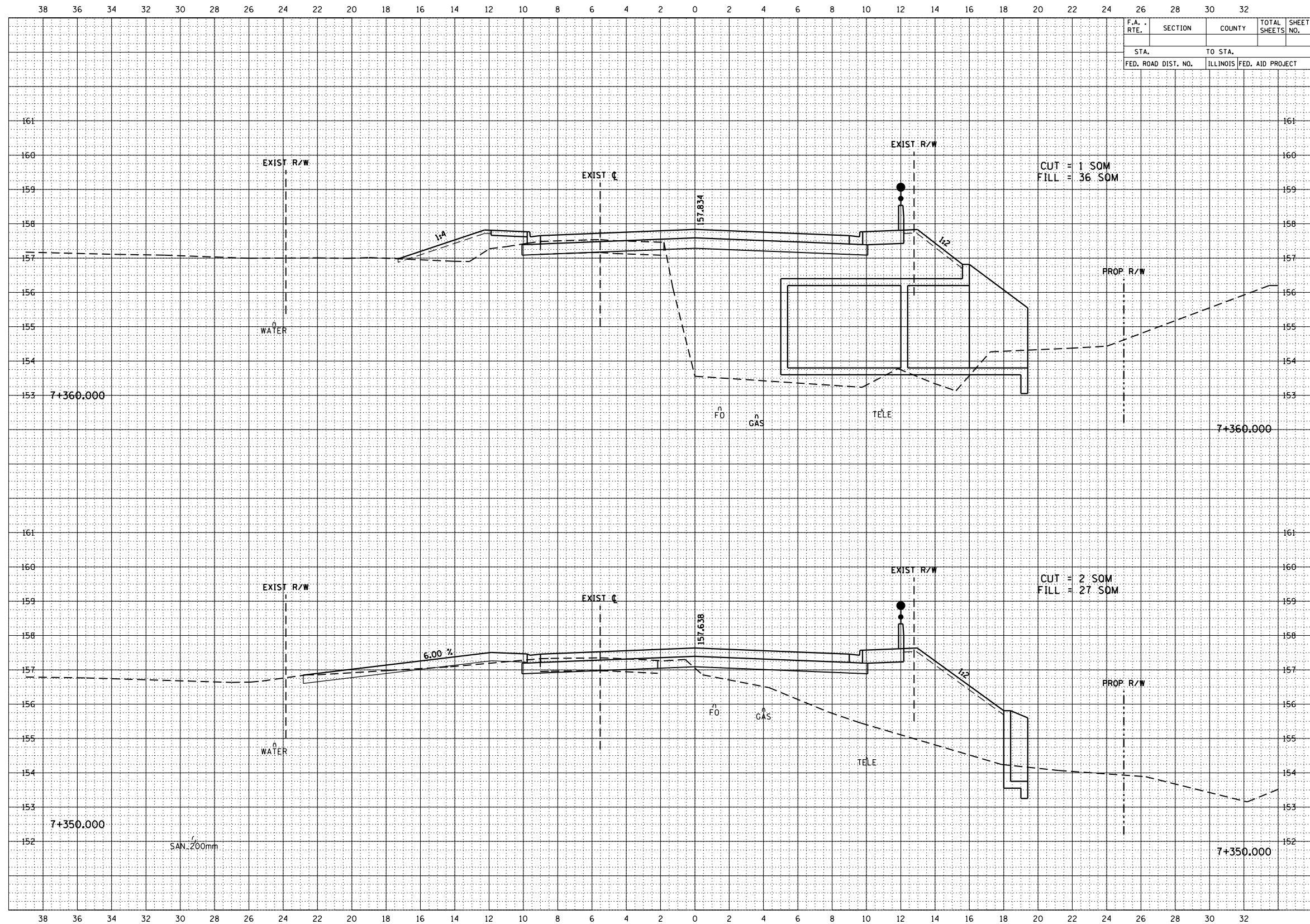
USER NAME = lababidism
PLOT SCALE = 100.0000' / 1" =
PLOT DATE = 5/20/2016

DESIGNED -	REVISED -
DRAWN -	REVISED -
CHECKED -	REVISED -
DATE -	REVISED -

STATE OF ILLINOIS
DEPARTMENT OF TRANSPORTATION

EXISTING CROSS SECTION
FOR INFORMATION ONLY
SCALE: SHEET OF SHEETS STA. TO STA.

F.A.P. RTE.	SECTION	COUNTY	TOTAL SHEETS	SHEET NO.
399	(37)I	TAZEWELL	16	13
CONTRACT NO. 68D18				
ILLINOIS FED. AID PROJECT				



DATE	
BY	
FINAL SURVEY	
PLOTTED	
NOTE BOOK	
AREA	
CHECKED	
NO.	

DATE	
BY	
ORIGINAL SURVEY	
PLOTTED	
NOTE BOOK	
AREA	
CHECKED	
NO.	

FILE NAME = 68D18.dgn
Default

USER NAME = lababidism
PLOT SCALE = 100.0000' / 1" =
PLOT DATE = 5/20/2016

DESIGNED -
DRAWN -
CHECKED -
DATE -

REVISED -
REVISED -
REVISED -
REVISED -

STATE OF ILLINOIS
DEPARTMENT OF TRANSPORTATION

SCALE: SHEET OF SHEETS STA. TO STA.

EXISTING CROSS SECTION
FOR INFORMATION ONLY

F.A.P. RTE.	SECTION	COUNTY	TOTAL SHEETS	SHEET NO.
399	(37)I	TAZEWELL	16	14
CONTRACT NO. 68D18				
ILLINOIS FED. AID PROJECT				

