

STATE OF ILLINOIS
DEPARTMENT OF TRANSPORTATION
DIVISION OF HIGHWAYS

**PROPOSED
HIGHWAY PLANS**

VARIOUS ROUTES
SECTION D5 LIGHTING REPAIRS 2017-2

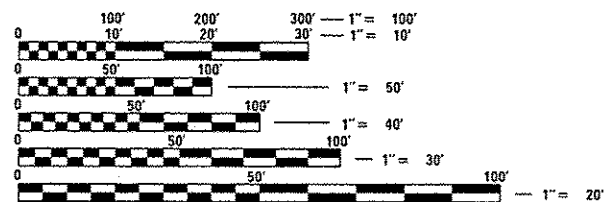
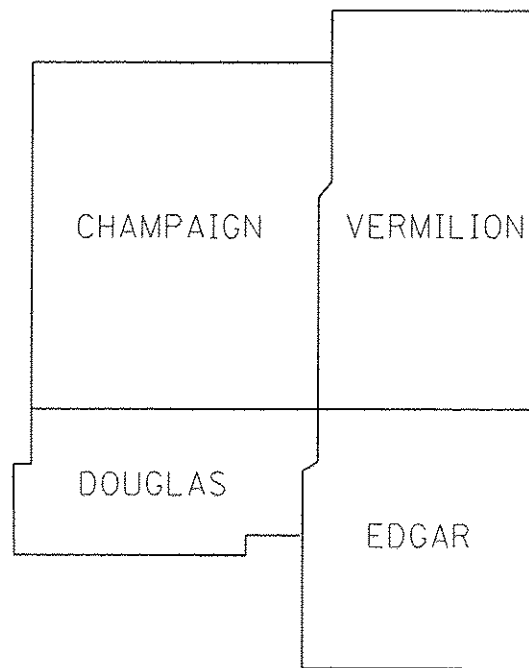
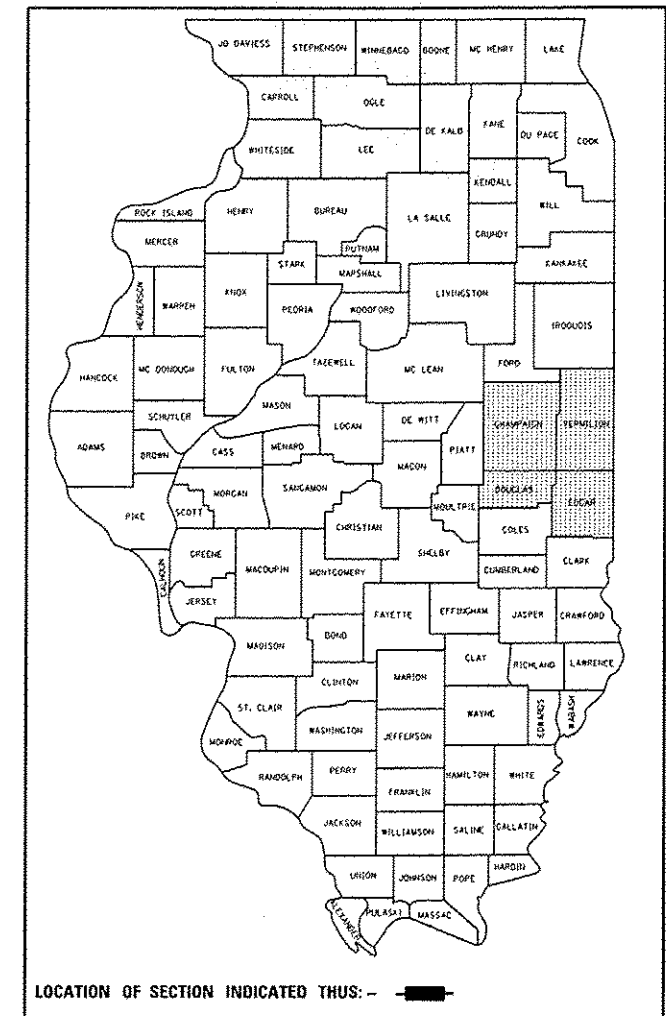
**EAST FIELD AREA ON-CALL LIGHTING REPAIRS
VARIOUS COUNTIES**

C-95-056-16

F.A. RTE.	SECTION	COUNTY	TOTAL SHEETS	SHEET NO.
VAR.		VARIOUS	3	1
		ILLINOIS	CONTRACT NO. 70C11	

D5 LIGHTING REPAIRS 2017-2

D-95-056-16



FULL SIZE PLANS HAVE BEEN PREPARED USING STANDARD ENGINEERING SCALES. REDUCED SIZED PLANS WILL NOT CONFORM TO STANDARD SCALES. IN MAKING MEASUREMENTS ON REDUCED PLANS, THE ABOVE SCALES MAY BE USED.

J.U.L.I.E.
JOINT UTILITY LOCATION INFORMATION FOR EXCAVATION
1-800-892-0123
OR 811

PROJECT ENGINEER: JASON STULTS
PHONE NUMBER: (217) 465-4181

CONTRACT NO. 70C11.

STATE OF ILLINOIS
DEPARTMENT OF TRANSPORTATION
DIVISION OF HIGHWAYS

SUBMITTED MAY 6 2016
Kensil A. Gammath
DEPUTY DIRECTOR OF HIGHWAYS, REGION ENGINEER

July 1 2016
Mouhammad M. Addis PE
ENGINEER OF DESIGN AND ENVIRONMENT

July 1 2016
Omer Osman PE
DIRECTOR OF HIGHWAYS, CHIEF ENGINEER

**PRINTED BY THE AUTHORITY
OF THE STATE OF ILLINOIS**

INDEX OF SHEETS

SHEET NO.	DESCRIPTION
1	COVER SHEET
2	INDEX OF SHEETS
2	HIGHWAY STANDARDS
2	GENERAL NOTES
3	SUMMARY OF QUANTITIES

HIGHWAY STANDARDS

STANDARD NUMBER	NAME OF STANDARD
000001-06	STANDARD SYMBOLS, ABBREVIATIONS AND PATTERNS
001006	DECIMAL OF AN INCH AND OF A FOOT
701001-02	OFF-ROAD OPERATIONS, 2L, 2W, MORE THAN 15' (4.5 M) AWAY
701006-05	OFF-ROAD OPERATIONS, 2L, 2W, 15' (4.5 M) TO 24" (600 MM) FROM PAVEMENT EDGE
701101-05	OFF-ROAD OPERATIONS, MULTILANE, 15' (4.5 M) TO 24" (600 MM) FROM PAVEMENT EDGE
701106-02	OFF-ROAD OPERATIONS, MULTILANE, MORE THAN 15' (4.5 M) AWAY
701201-04	LANE CLOSURE, 2L, 2W, DAY ONLY, FOR SPEEDS \geq 45 MPH
701206-03	LANE CLOSURE, 2L, 2W, NIGHT ONLY, FOR SPEEDS \geq 45 MPH
701301-04	LANE CLOSURE, 2L, 2W, SHORT TIME OPERATIONS
701306-03	LANE CLOSURE, 2L, 2W, SLOW MOVING OPERATIONS DAY ONLY \geq 45 MPH
701400-08	APPROACH TO LANE CLOSURE, FREEWAY/EXPRESSWAY
701401-09	LANE CLOSURE, FREEWAY/EXPRESSWAY
701406-10	LANE CLOSURE, FREEWAY/EXPRESSWAY, DAY OPERATIONS ONLY
701411-09	LANE CLOSURE, MULTILANE, AT ENTRANCE OR EXIT RAMP, FOR SPEEDS \geq 45 MPH
701421-07	LANE CLOSURE, MULTILANE, DAY OPERATIONS ONLY, FOR SPEEDS \geq 45 MPH TO 55 MPH
701422-08	LANE CLOSURE, MULTILANE, FOR SPEEDS \geq 45 MPH TO 55 MPH
701426-08	LANE CLOSURE, MULTILANE, INTERMITTENT OR MOVING OPERATION, FOR SPEEDS \geq 45 MPH
701427-04	LANE CLOSURE, MULTILANE, INTERMITTENT OR MOVING OPERATION, FOR SPEEDS \leq 40 MPH
701428-01	TRAFFIC CONTROL SET-UP AND REMOVAL FREEWAY/EXPRESSWAY
701456-03	PARTIAL EXIT RAMP CLOSURE FREEWAY/EXPRESSWAY
701501-06	URBAN LANE CLOSURE, 2L, 2W, UNDIVIDED
701502-06	URBAN LANE CLOSURE, 2L, 2W, WITH BIDIRECTIONAL LEFT TURN LANE
701601-09	URBAN LANE CLOSURE, MULTILANE, 1W OR 2W WITH NONTRAVERSABLE MEDIAN
701602-07	URBAN LANE CLOSURE, MULTILANE, 2W WITH BIDIRECTIONAL LEFT TURN LANE
701606-10	URBAN LANE CLOSURE, MULTILANE, 2W WITH MOUNTABLE MEDIAN
701701-10	URBAN LANE CLOSURE, MULTILANE INTERSECTION
701901-05	TRAFFIC CONTROL DEVICES

GENERAL NOTES

G.N.-100
 ENGLISH UNITS OF MEASUREMENT SHALL GOVERN OVER AND SUPERSEDE ANY METRIC UNITS SHOWN IN THIS CONTRACT. WHERE INCLUDED, METRIC UNITS ARE FOR INFORMATION ONLY.

G.N.-100A
 ELECTRONIC FILES AND/OR ELECTRONIC SURVEY INFORMATION INCLUDING CADD FILES WILL NOT BE AVAILABLE TO THE CONTRACTOR.

NO COMMITMENTS

FILE NAME =	USER NAME = p1ersonbr	DESIGNED -	REVISED -	STATE OF ILLINOIS DEPARTMENT OF TRANSPORTATION	INDEX OF SHEETS, HIGHWAY STANDARDS & GENERAL NOTES	F.A. RTE.	SECTION	COUNTY	TOTAL SHEETS	SHEET NO.
p:\1\1084EBID\INTEG\Illinois.gov\PHDOT\00	Documents\DOT Offices\District 5\Projects\057	DRAWN	REVISED			VAR.	*	VARIOUS	3	2
	PLOT SCALE = 40.0000' / 1".	CHECKED -	REVISED -			* 05 LIGHTING REPAIRS 2017-2		CONTRACT NO. 70C11		
MODELNAME#	PLOT DATE = 5/6/2016	DATE -	REVISED -			SCALE:	SHEET 1 OF 1 SHEETS	STA.	TO STA.	ILLINOIS FED. AID PROJECT

SUMMARY OF QUANTITIES

CODE NO	ITEM	UNIT	TOTAL QUANTITY	LOCATION OF WORK:		
				VARIOUS ROUTES	VARIOUS ROUTES	VARIOUS ROUTES
				CONSTRUCTION TYPE CODE:		
				0021	0021	0021
				100% MCHD	100% STATE	100% STATE
					Contract Maint	ITS
X0327495	JOURNEYMAN ELECTRICIAN	HOUR	2,075.0	650.0	1,300.0	125.0
X0327496	APPRENTICE ELECTRICIAN	HOUR	100.0	25.0	50.0	25.0
X0327497	PICK-UP TRUCK	HOUR	1,450.0	450.0	900.0	100.0
X0327498	BUCKET TRUCK (LENGTH LESS THAN 35 FEET)	HOUR	575.0	175.0	350.0	50.0
X0327499	BUCKET TRUCK (LENGTH 35 TO 65 FEET)	HOUR	975.0	300.0	600.0	75.0
X0327500	ARROWBOARD (TRAILER MOUNTED)	HOUR	535.0	160.0	325.0	50.0
X0327501	ATTENUATOR, CRASH (TRUCK MOUNTED)	HOUR	535.0	160.0	325.0	50.0