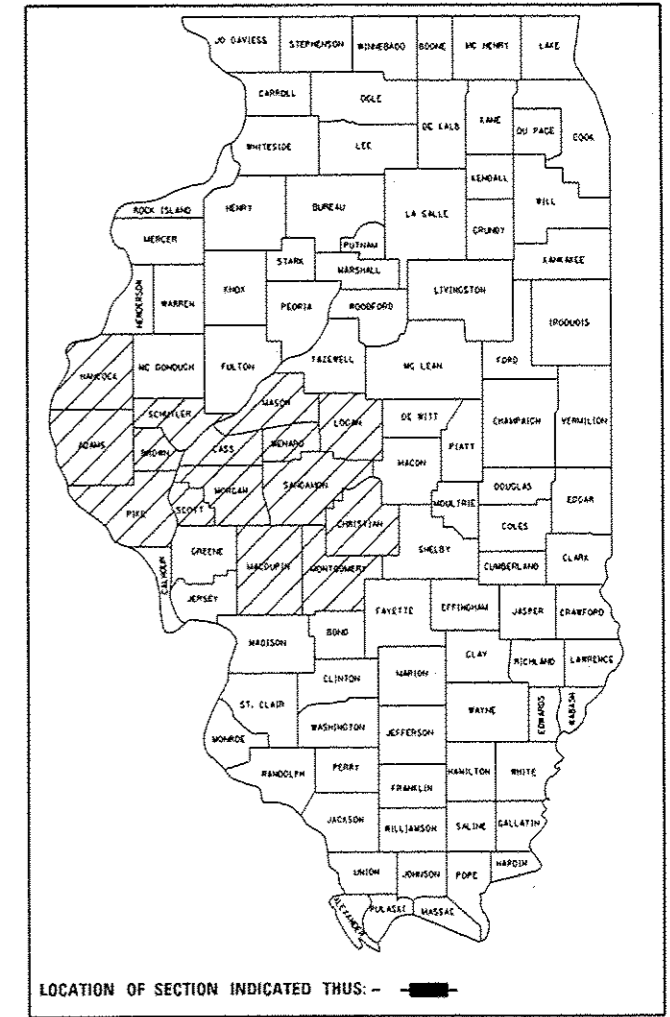


STATE OF ILLINOIS  
DEPARTMENT OF TRANSPORTATION

|                              |         |          |                    |           |
|------------------------------|---------|----------|--------------------|-----------|
| F.A. #                       | SECTION | COUNTY   | TOTAL SHEETS       | SHEET NO. |
| VAR                          | **      | VARIOUS  | 17                 | 1         |
|                              |         | ILLINOIS | CONTRACT NO. 72J18 |           |
| ** D6 CABLE/GUARDRAIL 2016-1 |         |          |                    |           |

D-96-056-16



# PROPOSED HIGHWAY PLANS

VARIOUS ROUTES  
SECTION D6 CABLE/GUARDRAIL 2017

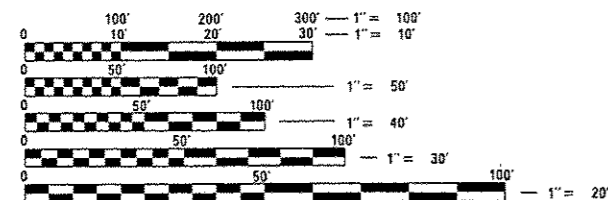
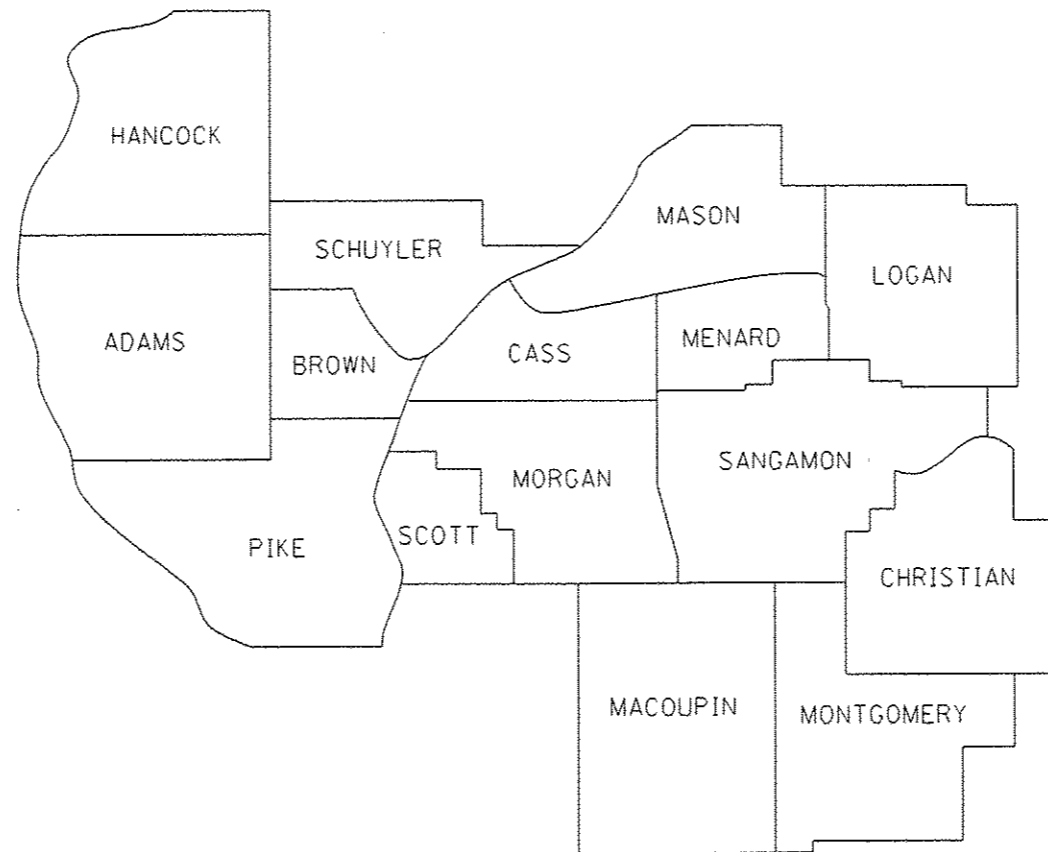
SAFETY ITEM REPAIR  
VARIOUS COUNTIES IN D6  
C-96-056-16

FOR INDEX OF SHEETS, SEE SHEET NO. ...

INDEX OF SHEETS

- 1 COVER SHEET
- 2 GENERAL NOTES
- 3-5 SUMMARY OF QUANTITIES
- 6-16 PRE-MGS HIGHWAY STANDARDS
- 17 CABLE GUARD MARKER DETAIL

FOR LIST OF STANDARDS, SEE SHEET 2



FULL SIZE PLANS HAVE BEEN PREPARED USING STANDARD ENGINEERING SCALES. REDUCED SIZED PLANS WILL NOT CONFORM TO STANDARD SCALES. IN MAKING MEASUREMENTS ON REDUCED PLANS, THE ABOVE SCALES MAY BE USED.

J.U.L.I.E.  
JOINT UTILITY LOCATION INFORMATION FOR EXCAVATION  
1-800-892-0123  
OR 811

ACTING TEAM ENGINEER: JAY EDWARDS 217-785-0597  
TEAM MANAGER: JONATHAN COX 217-782-1378

GROSS LENGTH = x.xx FT. = x.xxx MILE  
NET LENGTH = x.xx FT. = x.xxx MILE

CONTRACT NO. 72J18

STATE OF ILLINOIS  
DEPARTMENT OF TRANSPORTATION

SUBMITTED April 25 2016

*[Signature]*  
REGIONAL ENGINEER

July 1 2016  
*[Signature]*  
ENGINEER OF DESIGN AND ENVIRONMENT

July 1 2016  
*[Signature]*  
DIRECTOR OF PROGRAM DEVELOPMENT

PRINTED BY THE AUTHORITY  
OF THE STATE OF ILLINOIS

**HIGHWAY STANDARDS**

| STANDARD NO. | TITLE  |
|--------------|--|
| 630001-10    | STEEL PLATE BEAM GUARDRAIL   |
| 630301-06    | SHOULDER WIDENING FOR TYPE 1 (SPECIAL) GUARDRAIL TERMINALS                     |
| 631011-09    | TRAFFIC BARRIER TERMINAL, TYPE 2   |
| 631026-06    | TRAFFIC BARRIER TERMINAL, TYPE 5   |
| 631031-14    | TRAFFIC BARRIER TERMINAL, TYPE 6   |
| 643001-02    | SAND MODULE IMPACT ATTENUATORS   |
| 664001-02    | CHAIN LINK FENCE   |
| 665001-02    | WOVEN WIRE FENCE   |
| 701001-02    | OFF-ROAD OPERATIONS, 2L, 2W, MORE THAN 15' (4.5 M) AWAY                        |
| 701006-05    | OFF-ROAD OPERATIONS, 2L, 2W, 15' (4.5 M) TO 24" (600 MM) FROM PAVEMENT EDGE    |
| 701101-05    | OFF-ROAD OPERATIONS, MULTILANE, 15' (4.5 M) TO 24" (600 MM) FROM PAVEMENT EDGE |
| 701106-02    | OFF-ROAD OPERATIONS, MULTILANE, MORE THAN 15' (4.5 M) AWAY                     |
| 701201-04    | LANE CLOSURE, 2L, 2W, DAY ONLY, FOR SPEEDS > 45 MPH                            |
| 701301-04    | LANE CLOSURE, 2L, 2W, SHORT TIME OPERATIONS                                    |
| 701400-08    | APPROACH TO LANE CLOSURE, FREEWAY/EXPRESSWAY                                   |
| 701406-10    | LANE CLOSURE, FREEWAY/EXPRESSWAY, DAY OPERATIONS ONLY                          |
| 701411-09    | LANE CLOSURE, MULTILANE, AT ENTRANCE OR EXIT RAMP, FOR SPEEDS > 45 MPH         |
| 701421-07    | LANE CLOSURE, MULTILANE, DAY OPERATIONS ONLY, FOR SPEEDS > 45 MPH TO 55 MPH    |
| 701422-08    | LANE CLOSURE, MULTILANE, FOR SPEEDS > 45 MPH TO 55 MPH                         |
| 701426-08    | LANE CLOSURE, MULTILANE, INTERMITTENT OR MOVING OPERATION, FOR SPEEDS > 45 MPH |
| 701427-04    | LANE CLOSURE, MULTILANE, INTERMITTENT OR MOVING OPERATION, FOR SPEEDS < 40 MPH |
| 701428-01    | TRAFFIC CONTROL SET UP AND REMOVAL FREEWAY/EXPRESSWAY                          |
| 701456-03    | PARTIAL EXIT RAMP CLOSURE FREEWAY/EXPRESSWAY                                   |
| 701501-06    | URBAN LANE CLOSURE, 2L, 2W, UNDIVIDED  |
| 701502-06    | URBAN LANE CLOSURE, 2L, 2W, WITH BIDIRECTIONAL LEFT TURN LANE                  |
| 701601-09    | URBAN LANE CLOSURE, MULTILANE, 1W OR 2W WITH NONTRAVERSABLE MEDIAN             |
| 701602-07    | URBAN LANE CLOSURE, MULTILANE, 2W WITH BIDIRECTIONAL LEFT TURN LANE            |
| 701606-10    | URBAN LANE CLOSURE, MULTILANE, 2W WITH MOUNTABLE MEDIAN                        |
| 701701-10    | URBAN LANE CLOSURE, MULTILANE INTERSECTION                                     |
| 701901-05    | TRAFFIC CONTROL DEVICES  |
| 725001       | OBJECT AND TERMINAL MARKERS  |

**GENERAL NOTES**

ALL DISTURBED AREAS CAUSED BY THE CONTRACTOR'S OPERATIONS SHALL BE GRADED AND SEEDED WITH CLASS 2 ROADSIDE MIXTURE AND FERTILIZED AS STATED IN SECTION 250 OF THE STANDARD SPECIFICATIONS. COST SHALL BE CONSIDERED INCLUDED IN THE UNIT COST OF THE WORK BEING PERFORMED.

REMOVAL OF DAMAGED IMPACT ATTENUATORS SHALL BE INCLUDED IN THE COST OF THE IMPACT ATTENUATOR BEING INSTALLED.

REMOVAL AND DISPOSAL OF DAMAGED FENCE SHALL BE INCLUDED IN THE COST OF THE FENCE BEING INSTALLED.

DISTRICT SIX

EXAMINED April 14th 20 16  
*John C. Wynn*  
 OPERATIONS ENGINEER

EXAMINED April 13 20 16  
*Ron Chamberlain*  
 PROJECT IMPLEMENTATION ENGINEER

EXAMINED April 20 16  
*Jeffrey P. Myer*  
 PROGRAM DEVELOPMENT ENGINEER

|  |                   |                |           |   |                           |                     |           |         |                           |              |           |   |
|--|-------------------|----------------|-----------|---|---------------------------|---------------------|-----------|---------|---------------------------|--------------|-----------|---|
| FILE NAME *  | USER NAME * coxjw | DESIGNED - JWC | REVISED - | <b>STATE OF ILLINOIS<br/>DEPARTMENT OF TRANSPORTATION</b> | <b>GENERAL NOTES</b>      |                     | F.A. RTE. | SECTION | COUNTY                    | TOTAL SHEETS | SHEET NO. |   |
| per\\illrb4e80intec.illinois.gov\PI\DOT\Documents\1007\Office\District 6\Projects\0672\DR\DRData\GAD\hd\HG\0672J18\shg\genno |                   | CHECKED - JWC  | REVISED - |   | SCALE:                    | SHEET 1 OF 1 SHEETS | STA.      | TO STA. | ILLINOIS FED. AID PROJECT | VARIOUS      | 17        | 2 |
| PLOT SCALE * 100.0000 / in.  |                   | DATE -         | REVISED - |   | CONTRACT NO. 72J18        |                     |           |         |                           |              |           |   |
| Default  |                   |                |           |   | ILLINOIS FED. AID PROJECT |                     |           |         |                           |              |           |   |



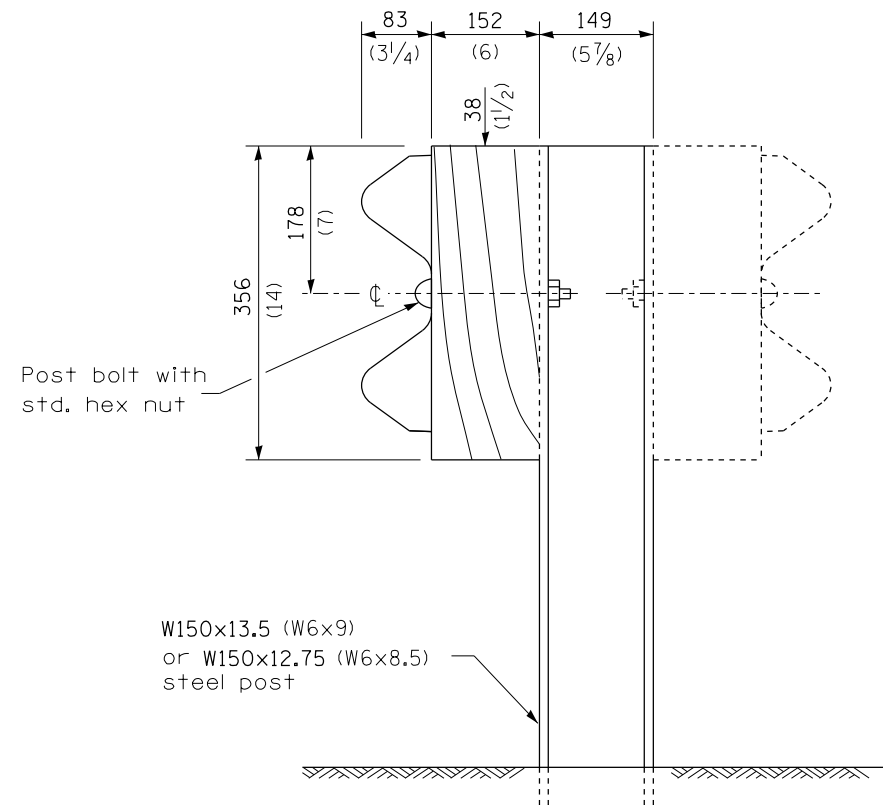
| CODE NO. | ITEM   | UNIT | TOTAL QUANTITY | CONSTRUCTION CODE       |              |  |
|----------|--|------|----------------|-------------------------|--------------|--|
|          |  |      |                | REGULAR PROGRAM ROADWAY | MCHD ROADWAY | STATEWIDE HIGH-TENSION CABLE RAIL REPAIR ROADWAY |
|          |  |      |                | 0021                    | 0021         | 0021   |
|          |  |      |                | 6-00664-0500            | 6-00664-9994 | 0-01847-6001                                     |
| 70100420 | TRAFFIC CONTROL AND PROTECTION, STANDARD 701411  | EACH | 2              | 1                       | 1            |  |
| 78200410 | GUARDRAIL MARKERS, TYPE A                        | EACH | 200            | 100                     | 100          |  |
| 72501000 | TERMINAL MARKER - DIRECT APPLIED                 | EACH | 40             | 14                      | 26           |  |
| X0325231 | CABLE GUARD MARKER                               | EACH | 260            |                         | 80           | 180  |
| X0325899 | REPAIR HIGH TENSION CABLE (GIBRALTAR)            | FOOT | 650            |                         | 180          | 470  |
| X0325900 | REPAIR HIGH TENSION BARRIER TERMINAL (GIBRALTAR) | EACH | 4              |                         | 2            | 2  |
| X0325901 | REPAIR POSTS (GIBRALTAR)                         | EACH | 130            |                         | 50           | 80   |
| X0325902 | REMOVE AND REPLACE POSTS (GIBRALTAR)             | EACH | 100            |                         | 50           | 50   |
| X0327490 | REPAIR HIGH TENSION CABLE (NU-CABLE)             | FOOT | 150            |                         | 70           | 80   |
| X0327491 | REPAIR POSTS (NU-CABLE)                          | EACH | 32             |                         | 20           | 12   |
| X0327492 | REMOVE AND REPLACE POSTS (NU-CABLE)              | EACH | 60             |                         | 20           | 40   |
| X0327493 | REPAIR HIGH TENSION BARRIER TERMINAL (NU-CABLE)  | EACH | 4              |                         | 2            | 2  |
| X6431220 | REMOVE AND REPLACE IMPACT ATTENUATOR SAND MODULE | EACH | 20             | 6                       | 14           |  |
| X7011834 | TRAFFIC CONTROL AND PROTECTION, CALL OUT WORK    | EACH | 21             | 5                       | 16           |  |

14

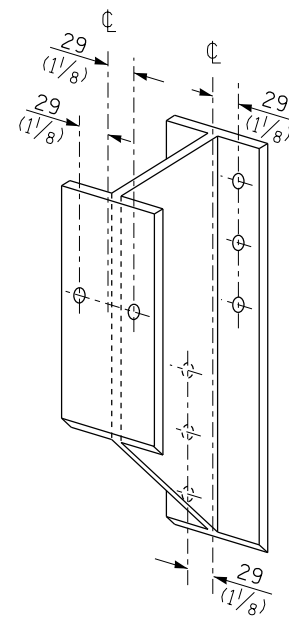
|   |                         |                |           |   |                              |                     |   |                    |         |        |              |           |
|---|-------------------------|----------------|-----------|---|------------------------------|---------------------|---|--------------------|---------|--------|--------------|-----------|
| FILE NAME :   | USER NAME : Varanakisfa | DESIGNED - JWC | REVISED - | <b>STATE OF ILLINOIS<br/>DEPARTMENT OF TRANSPORTATION</b> | <b>SUMMARY OF QUANTITIES</b> |                     |   | F.A. RTE.          | SECTION | COUNTY | TOTAL SHEETS | SHEET NO. |
| pm\1\0846RIDINTEG\Illinois.gov\PI\DOT\Documents\DOT Offices\District 5\Projects\067-064300Data\GA06\MS-0672J18-01-500.dwg | CHECKED - JWC           | REVISED -      | VARIOUS   |   |                              |                     |   | 17                 | 4       |        |              |           |
| Default   | PLOT DATE : 4/26/2016   | DATE -         | REVISED - |   | SCALE:                       | SHEET 2 OF 3 SHEETS | STA. TO STA.  | CONTRACT NO. 72J18 |         |        |              |           |
|   |                         |                |           |   |                              |                     | ILLINOIS FED. AID PROJECT **06 CABLE/GUARDRAIL 2017 |                    |         |        |              |           |



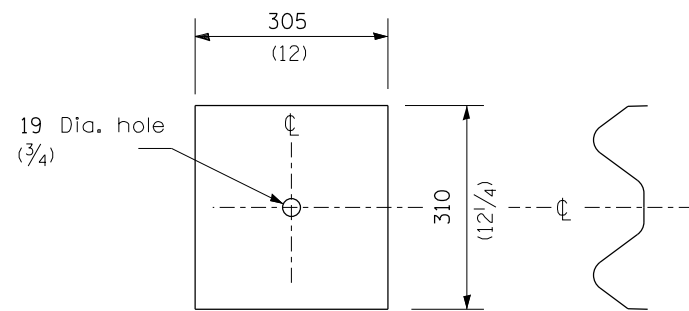




**STEEL POST CONSTRUCTION**



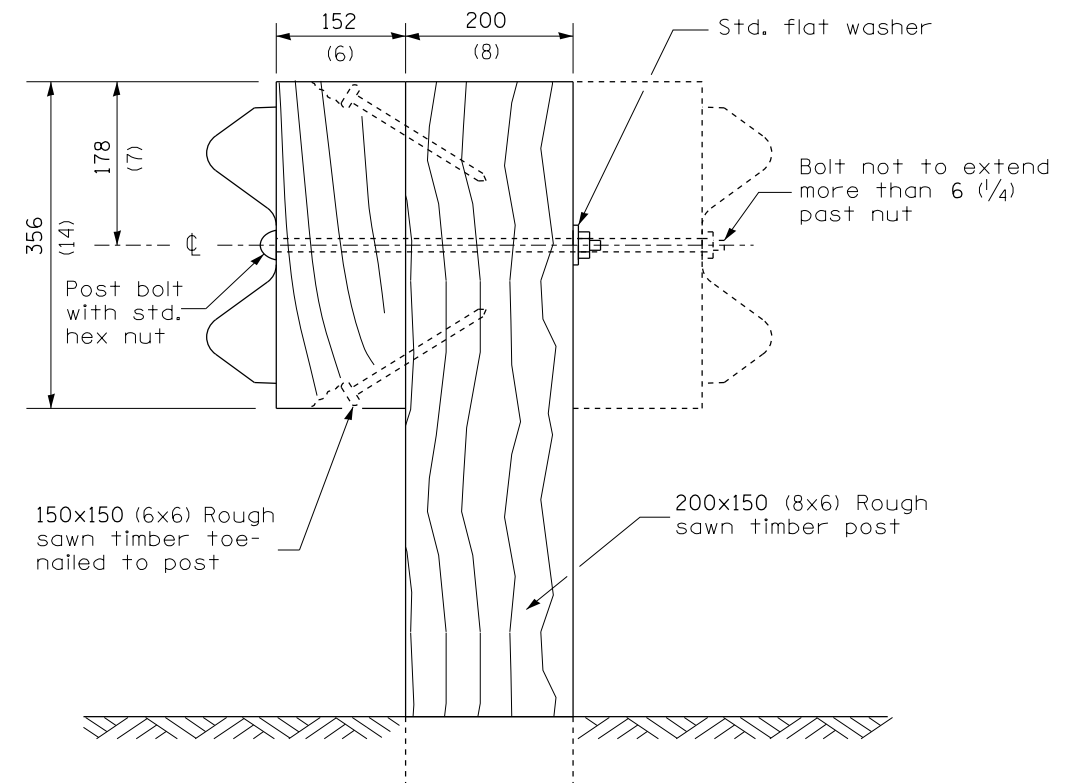
**STEEL BLOCK-OUT DETAIL**



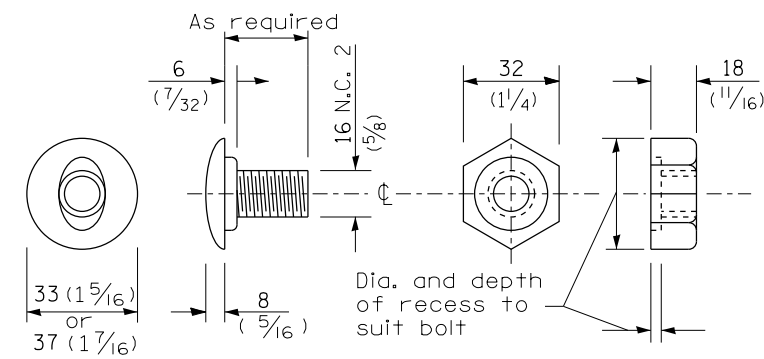
NOTE

Plate A shall be placed between rail element and block-out at non-splice mounting points only when steel block-outs are used.

**PLATE A**



**WOOD POST CONSTRUCTION**



**POST OR SPLICE BOLT & NUT**

|   |                       |            |           |
|---|-----------------------|------------|-----------|
| FILE NAME =   | USER NAME = Verenskif | DESIGNED - | REVISED - |
| pw:\IL\084EBIDINTEG.illinois.gov\PI\DOT\Documents\DOT Offices\District 6\Projects\D672\Drawings\LEADsheets\D672J18-sht-630001-REVISED STD.dgn |                       |            |           |
| PLOT SCALE = 26.0000' / in.   | CHECKED -             | REVISED -  |           |
| Default   | DATE -                | REVISED -  |           |

**STATE OF ILLINOIS  
DEPARTMENT OF TRANSPORTATION**

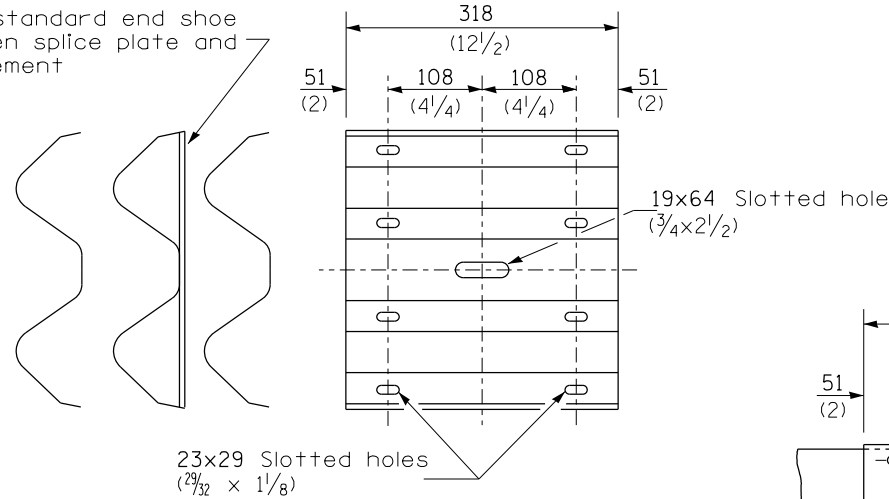
**PRE-MGS HIGHWAY STANDARD 630001-06  
STEEL PLATE BEAM GUARDRAIL EFFECTIVE 4-1-06**

SCALE: SHEET 2 OF 4 SHEETS STA. TO STA.

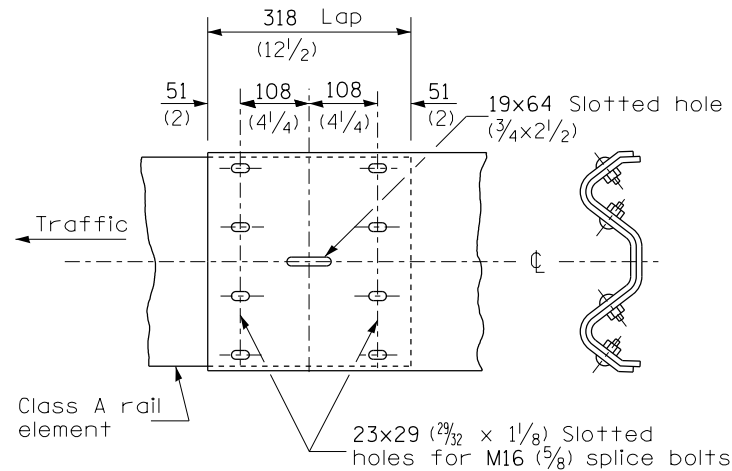
|                           |         |         |                    |           |
|---------------------------|---------|---------|--------------------|-----------|
| F.A. RTE.                 | SECTION | COUNTY  | TOTAL SHEETS       | SHEET NO. |
| •VAR                      | ••      | VARIOUS | 17                 | 7         |
| ILLINOIS FED. AID PROJECT |         |         | CONTRACT NO. 72J18 |           |

••D6 CABLE/GUARDRAIL 2017

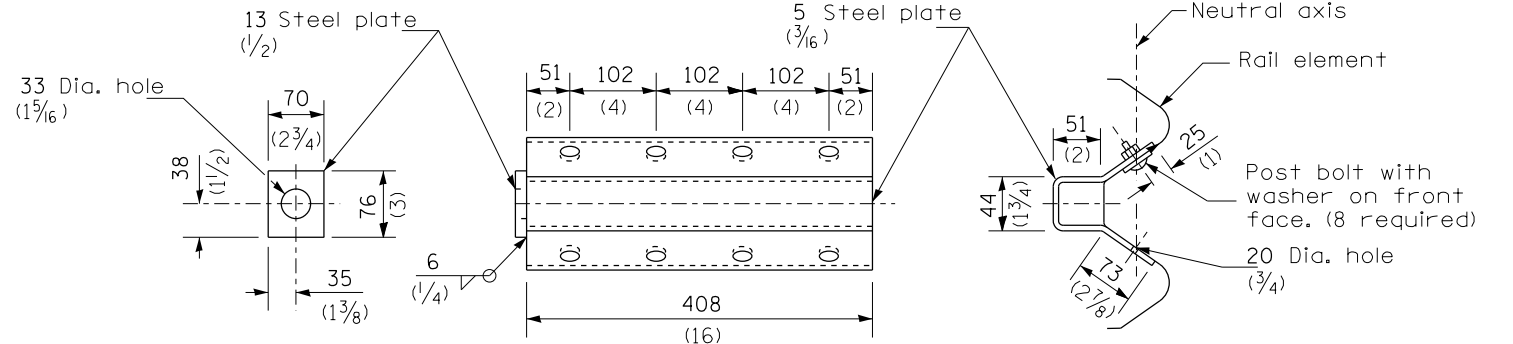
Place standard end shoe between splice plate and rail element



**SPLICE PLATE**

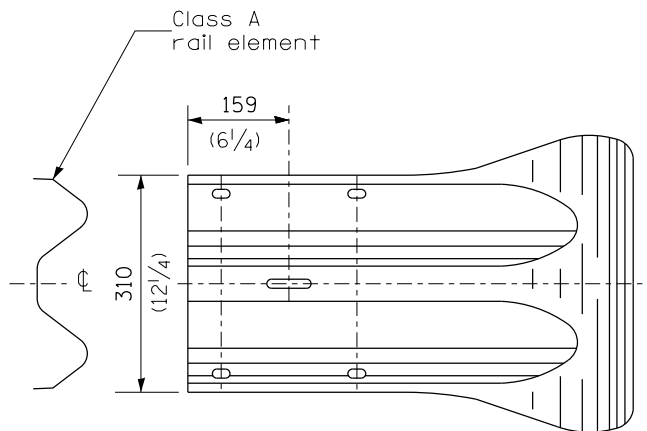
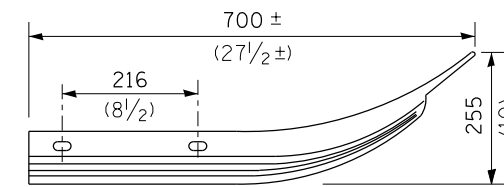


**RAIL ELEMENT SPLICE**

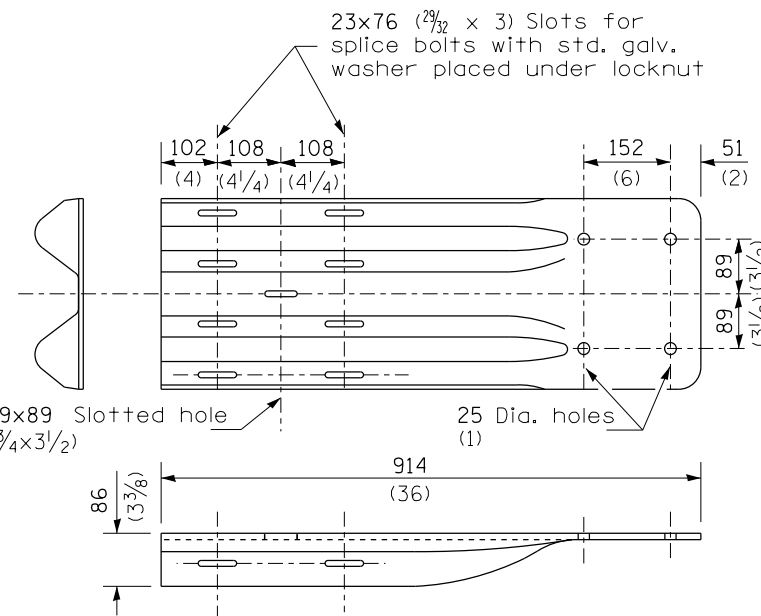


**NOTE**  
Anchor plate T shall be used to attach cable assembly to guardrail when required on traffic barrier terminals.

**ANCHOR PLATE T DETAILS**



**END SECTION**



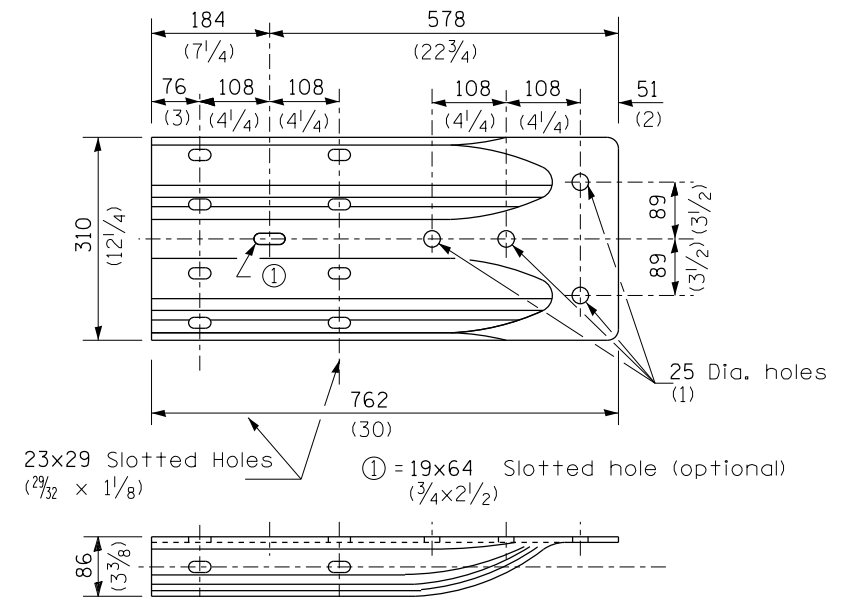
**NOTE**

When end shoe is attached to a bridge parapet which has an expansion joint, the bolts shall be provided with a locknut or double nut and shall be tightened only to a point that will allow guardrail movement.

The standard end shoe shall be attached to the concrete with pre-drilled or self-drilling anchor bolts. The anchor cone shall be set flush with the surface of the concrete.

Externally threaded studs protruding from the surface of the concrete will not be permitted.

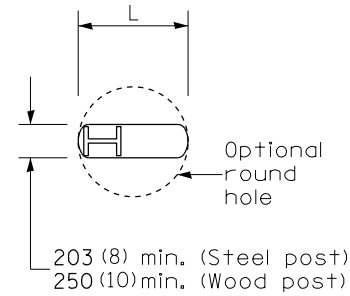
**END SHOE**



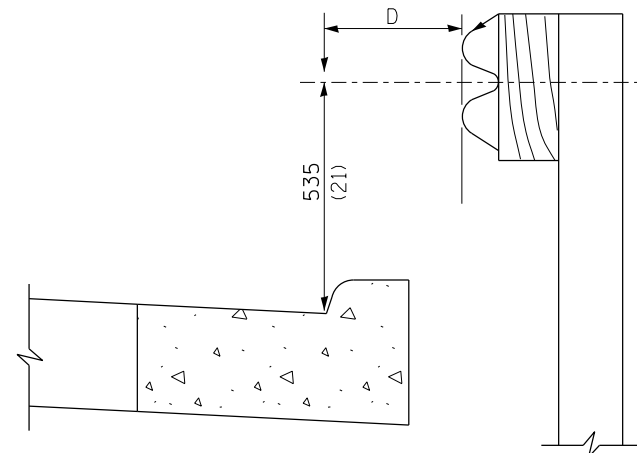
**ALTERNATE END SHOE**

|  |                                |            |           |   |   |          |                     |         |              |                           |                           |
|--|--------------------------------|------------|-----------|---|---|----------|---------------------|---------|--------------|---------------------------|---------------------------|
| FILE NAME =  | USER NAME = Verenskif          | DESIGNED - | REVISED - | <b>STATE OF ILLINOIS<br/>DEPARTMENT OF TRANSPORTATION</b> | <b>PRE-MGS HIGHWAY STANDARD 630001-06<br/>STEEL PLATE BEAM GUARDRAIL EFFECTIVE 4-1-06</b> | F.A. RE. | SECTION             | COUNTY  | TOTAL SHEETS | SHEET NO.                 |                           |
| pw:\IL\084EBIDINTEG.illinois.gov\PIDOT\Documents\DOT Offices\District 6\Projects\0672\Drawings\AD\Drawings\672\J18-sht-630001-06.dgn | PLotted SCALE = 26.0000' / in. | CHECKED -  | REVISED - |   |   | VAR      | **                  | VARIOUS | 17           | 8                         |                           |
| Default  | PLOT DATE = 4/26/2016          | DATE -     | REVISED - |   |   | SCALE:   | SHEET 3 OF 4 SHEETS | STA.    | TO STA.      | ILLINOIS FED. AID PROJECT | CONTRACT NO. 72J18        |
|  |                                |            |           |   |   |          |                     |         |              |                           | **D6 CABLE/GUARDRAIL 2017 |





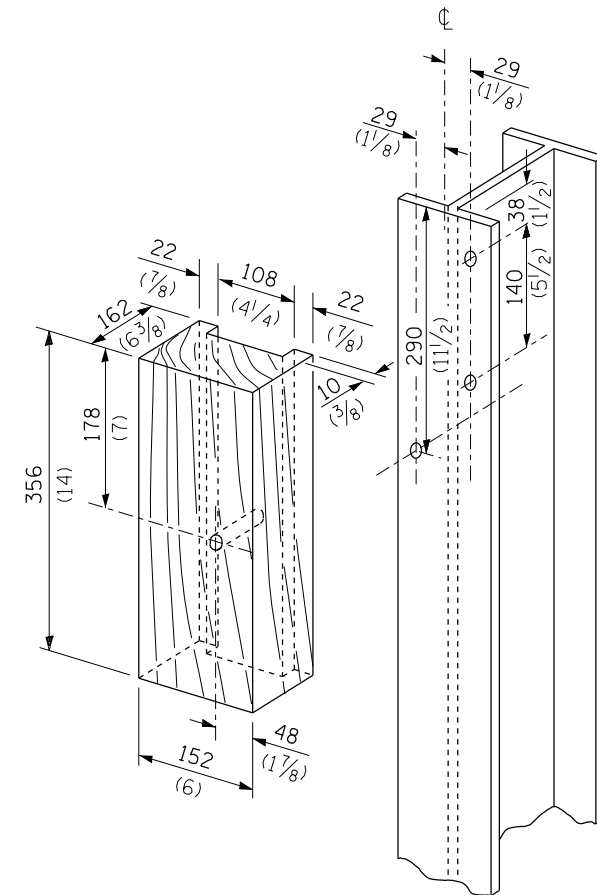
**PLAN**



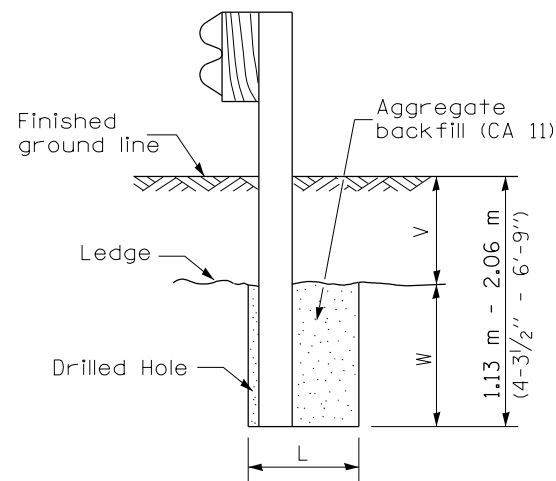
Note:  
If it is necessary for D to be more than 300 (12) and less than 3.0 m (10'-0") type M-5 (M-2) curb and gutter (Std. 606001) shall be used in front of and in advance of the guardrail.

**GUARDRAIL PLACED BEHIND CURB**

(D = 0 desirable to 300 (12) maximum)



**WOOD BLOCK-OUT AND STEEL POST DETAILS**

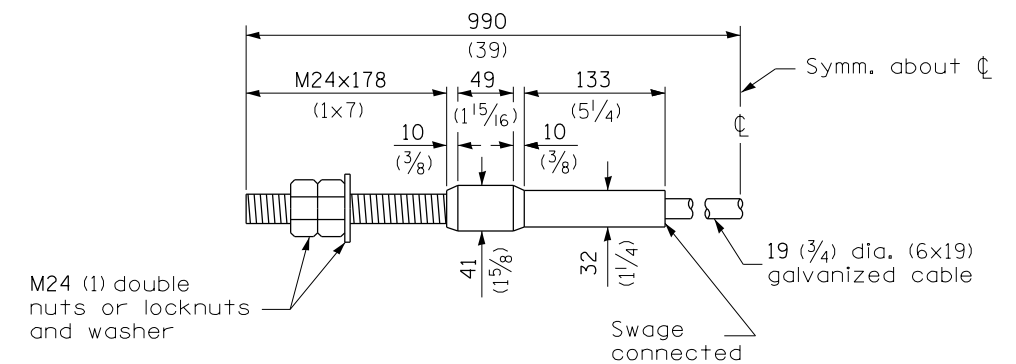


Note:  
Ledge line is top of rock ledge or hard slag fill.

**ELEVATION**

**FOOTING FOR POST WHEN IMPERVIOUS MATERIAL IS ENCOUNTERED**

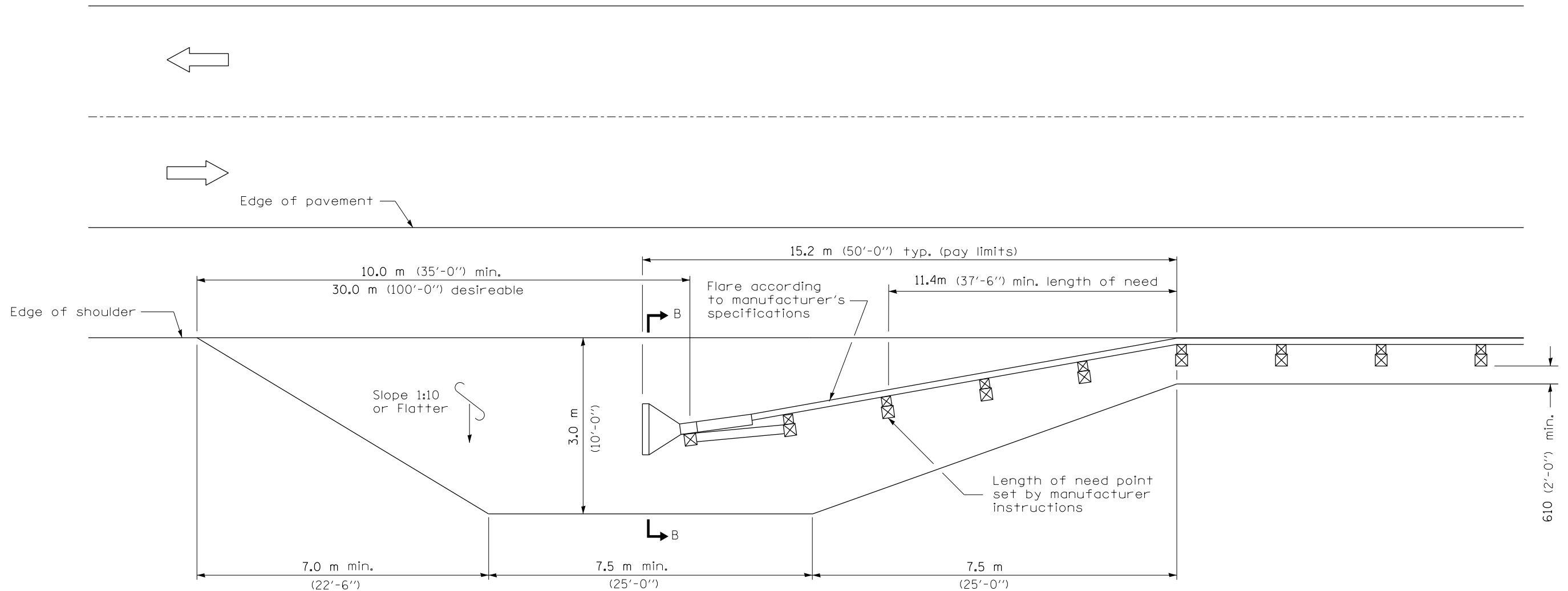
| V                               | W                   | L           |             |
|---------------------------------|---------------------|-------------|-------------|
|                                 |                     | Steel Post  | Wood Post   |
| 0 - 460<br>(0 - 18)             | 610<br>(24)         | 530<br>(21) | 580<br>(23) |
| >460 - 825<br>(>18 - 41.5)      | 305<br>(12)         | 203<br>(8)  | 250<br>(10) |
| >825 - 1.13 m<br>(>41.5 - 53.5) | 305 - 0<br>(12 - 0) | 203<br>(8)  | 250<br>(10) |



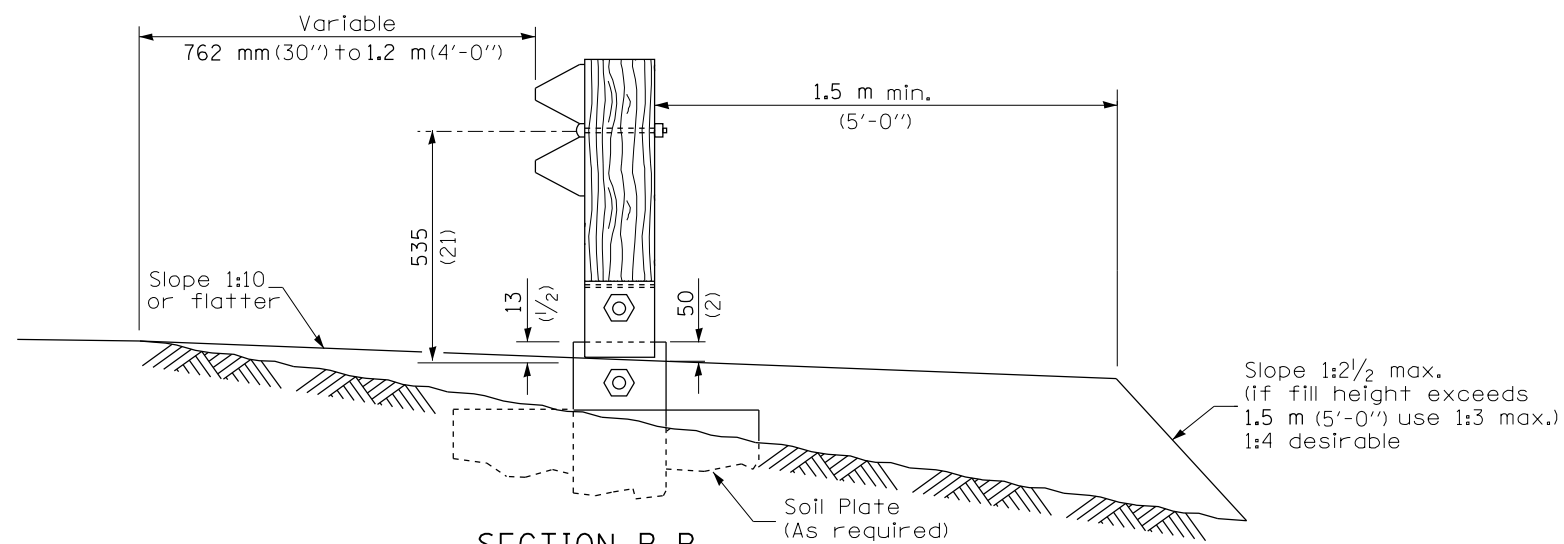
**CABLE ASSEMBLY**

(18,100 kg (40,000 lbs.) min. breaking strength)  
Tighten to taut tension.



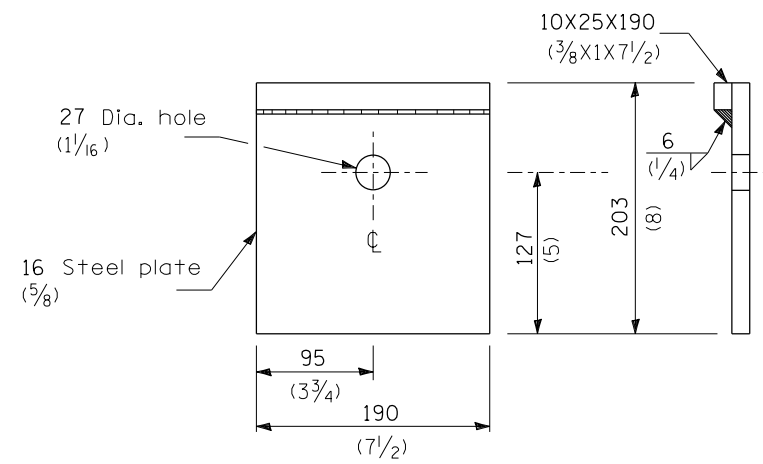


**SHOULDER WIDENING TRANSITION  
FOR FLARED TERMINAL**

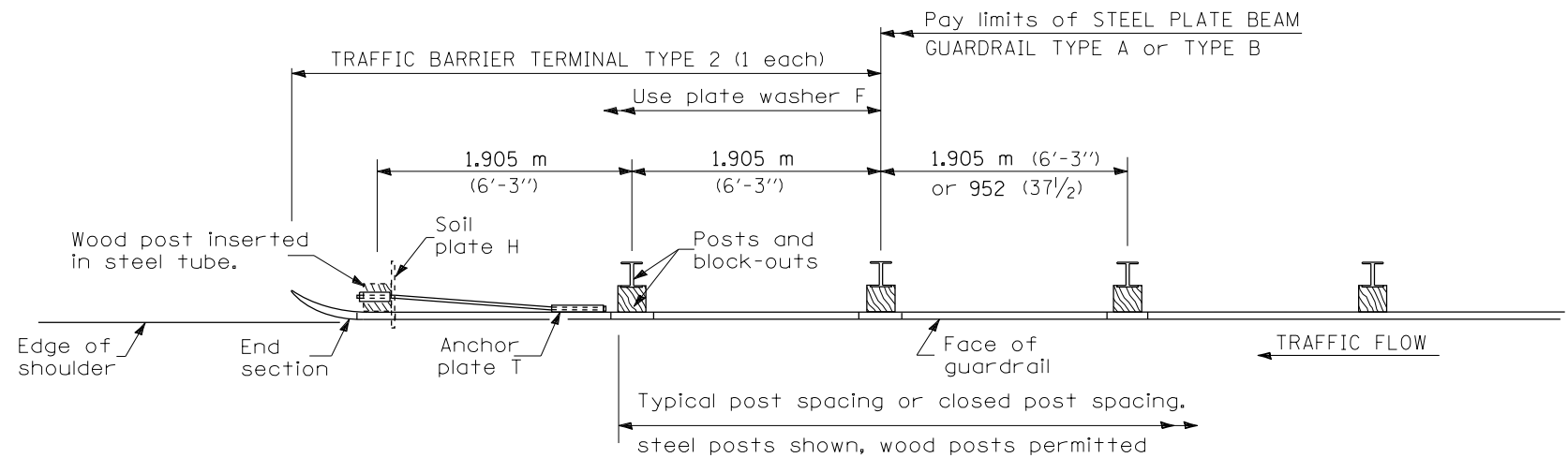


**SECTION B-B**  
(End section omitted for clarity.)

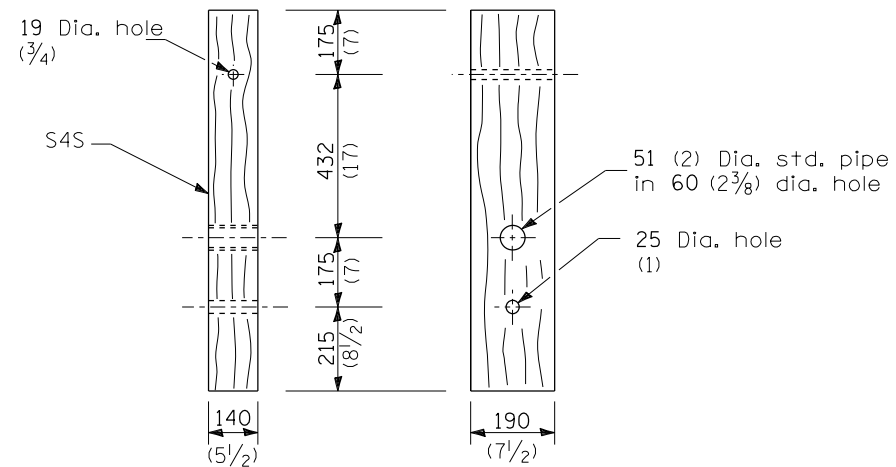
|  |                             |            |           |   |  |         |             |              |         |                           |                    |              |
|--|-----------------------------|------------|-----------|---|--|---------|-------------|--------------|---------|---------------------------|--------------------|--------------|
| FILE NAME =  | USER NAME = Verenskif       | DESIGNED - | REVISED - | <b>STATE OF ILLINOIS<br/>DEPARTMENT OF TRANSPORTATION</b> | <b>PRE-MGS HIGHWAY STANDARD 630301-03<br/>SHOULDER WID. FOR TYPE 1 (SPL) GUARDRAIL TERMINAL<br/>EFFECTIVE 4-1-06</b> |         |             | F.A.<br>RTE. | SECTION | COUNTY                    | TOTAL<br>SHEETS    | SHEET<br>NO. |
| pw:\IL\084EBIDINTEG.illinois.gov\PIWID\Documents\DOT Offices\District 6\Projects\0672\Drawings\AD\672J18-sht-630301-03-GR.TERM.dgn |                             | CHECKED -  | REVISED - |   | •VAR   | ••      | VARIOUS     | 17           | 11      |                           |                    |              |
| Default  | PLOT SCALE = 26.0000' / in. | DATE -     | REVISED - |   | SCALE:   | SHEET 2 | OF 2 SHEETS | STA.         | TO STA. | ILLINOIS FED. AID PROJECT | CONTRACT NO. 72J18 |              |
|  | PLOT DATE = 4/26/2016       |            |           |   |  |         |             |              |         |                           |                    |              |



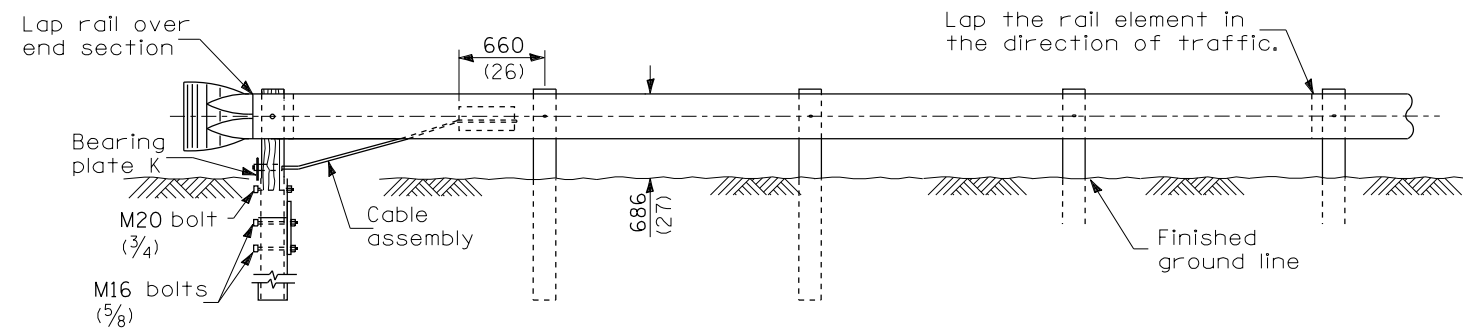
**BEARING PLATE K**



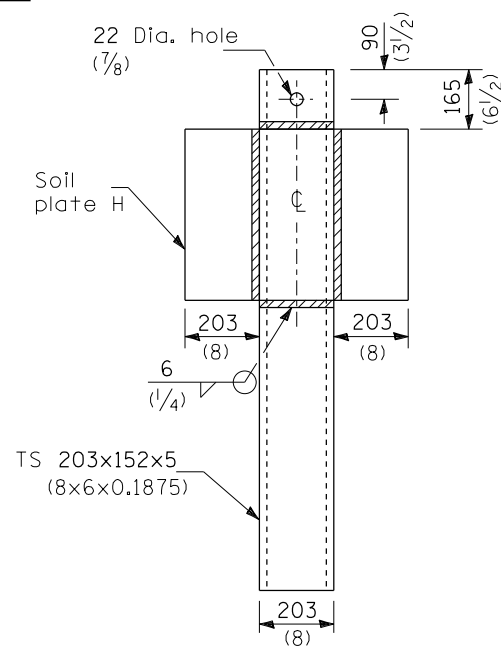
**PLAN**



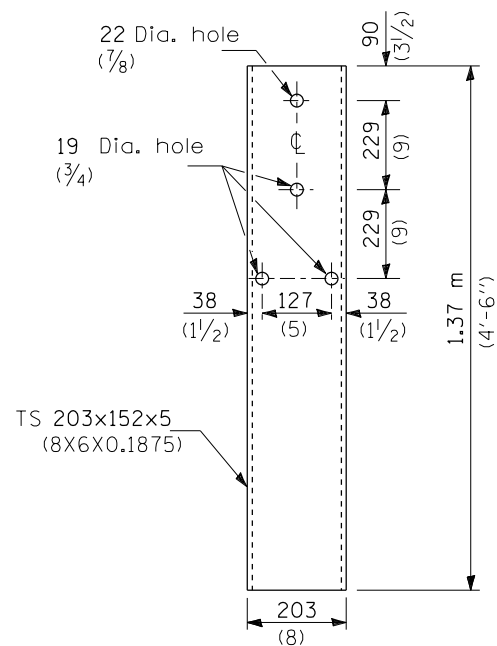
**WOOD POST**



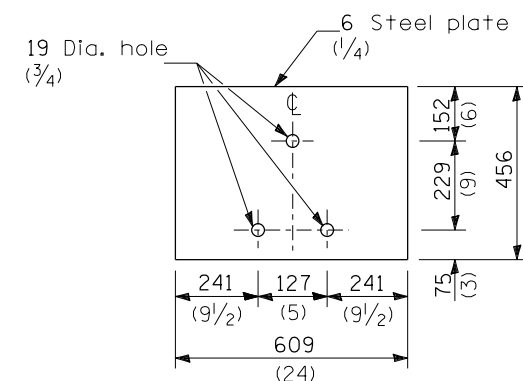
**ELEVATION**



**ALTERNATE SOIL PLATE CONNECTION**



**STEEL TUBE**



**SOIL PLATE H**

**GENERAL NOTES**

See Standard 630001 for details of guardrail not shown.

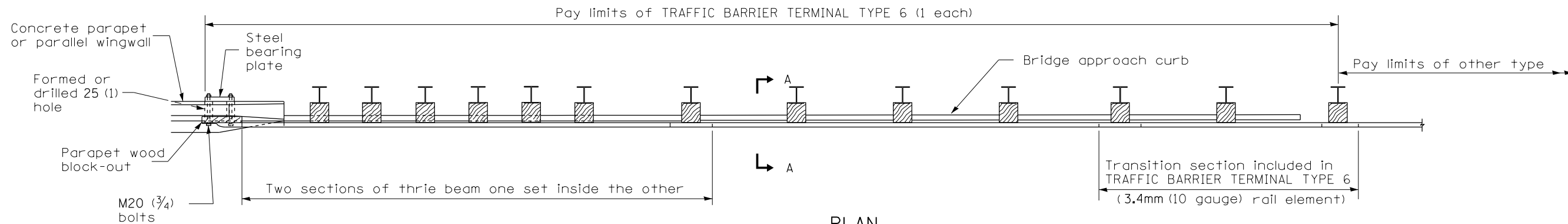
Use plate washer F at all posts.

The bearing plate K shall be held in position by (2) two eight penny nails driven into the post and bent over the top of the plate.

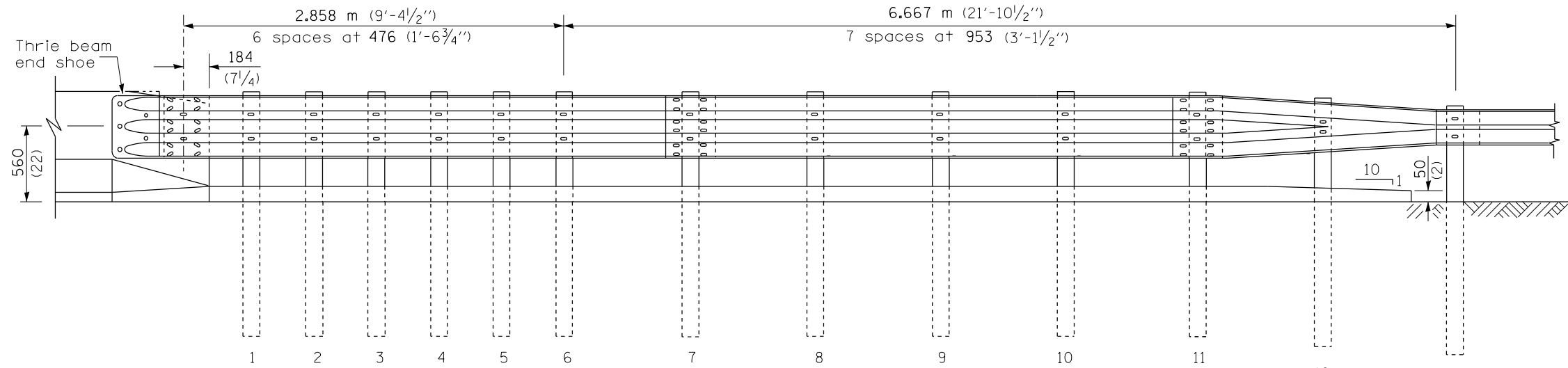
All dimensions are in millimeters (inches) unless otherwise shown.

|             |                       |            |           |   |   |   |         |                    |              |                           |  |
|-------------|-----------------------|------------|-----------|---|---|---|---------|--------------------|--------------|---------------------------|--|
| FILE NAME = | USER NAME = Verenskif | DESIGNED - | REVISED - | <b>STATE OF ILLINOIS<br/>DEPARTMENT OF TRANSPORTATION</b> | <b>PRE-MGS HIGHWAY STANDARD 631011-02<br/>TRAFFIC BARRIER TERMINAL, TYPE 2 EFFECTIVE 4-1-06</b> | F.A. RTE.                               | SECTION | COUNTY             | TOTAL SHEETS | SHEET NO.                 |  |
| Default     | PLOT DATE = 4/26/2016 | CHECKED -  | REVISED - |   |   | •VAR                                    | **      | VARIOUS            | 17           | 12                        |  |
|             |                       | DATE -     | REVISED - |   |   | SCALE: SHEET 1 OF 1 SHEETS STA. TO STA. |         | CONTRACT NO. 72J18 |              | ILLINOIS FED. AID PROJECT |  |
|             |                       |            |           |   |   |   |         |                    |              | **D6 CABLE/GUARDRAIL 2017 |  |

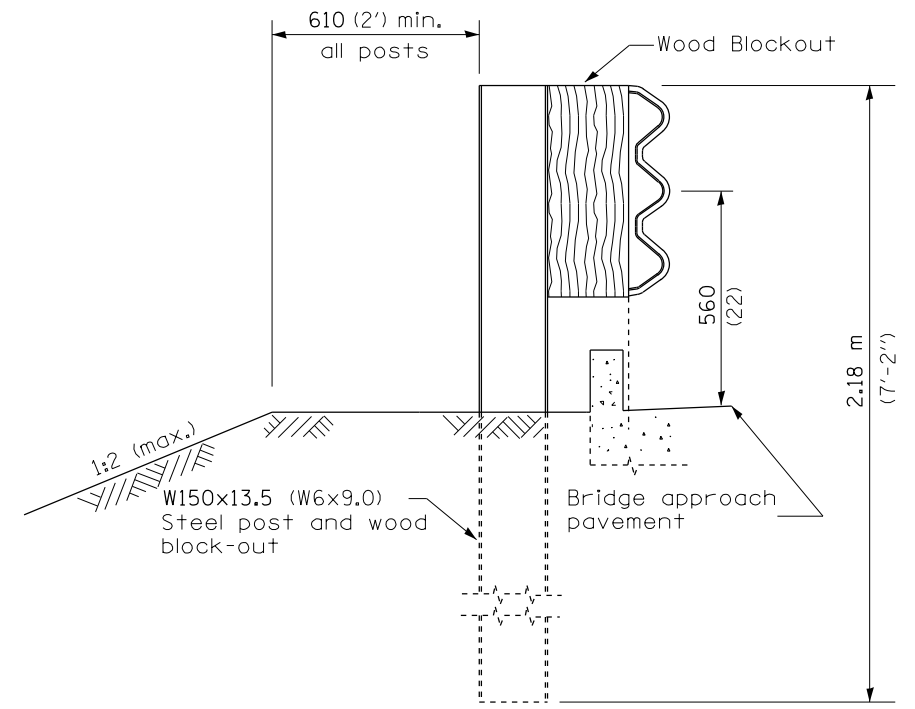




PLAN



ELEVATION



SECTION A-A

GENERAL NOTES

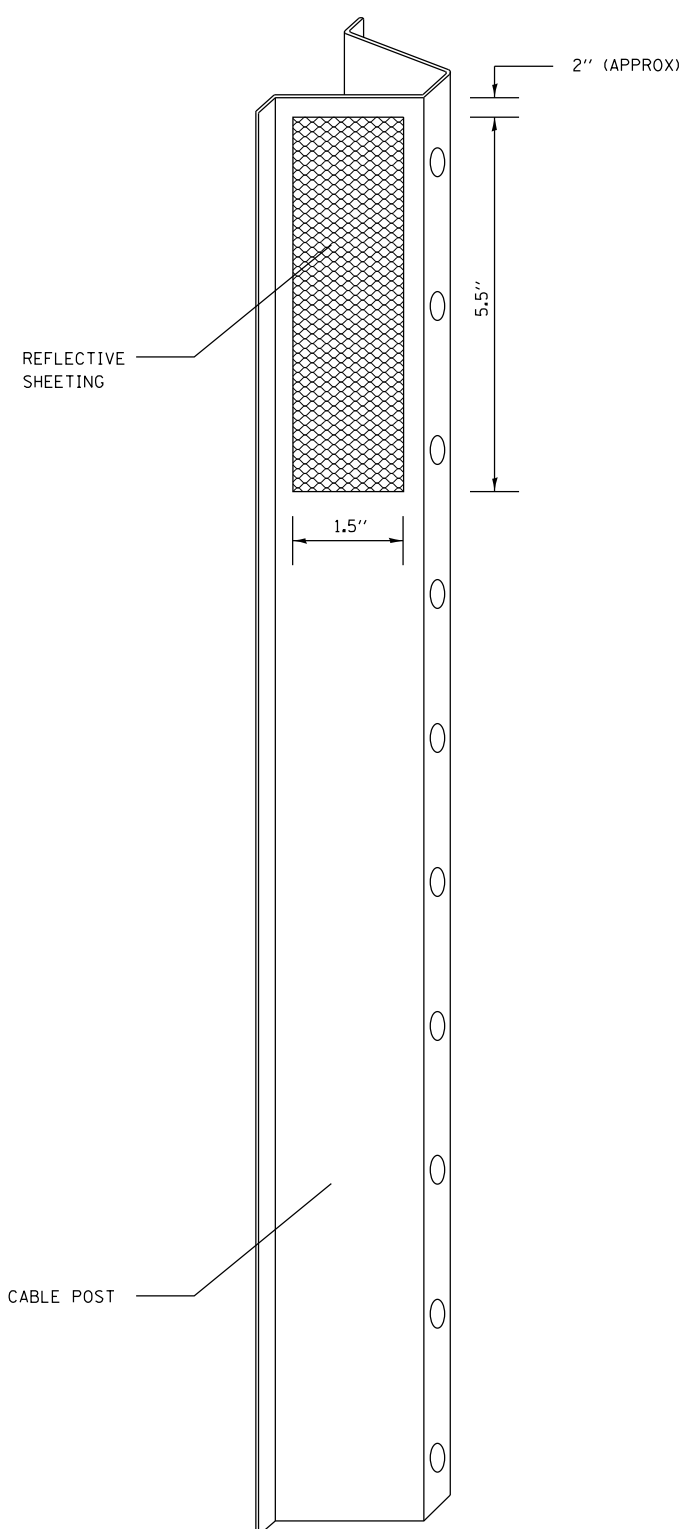
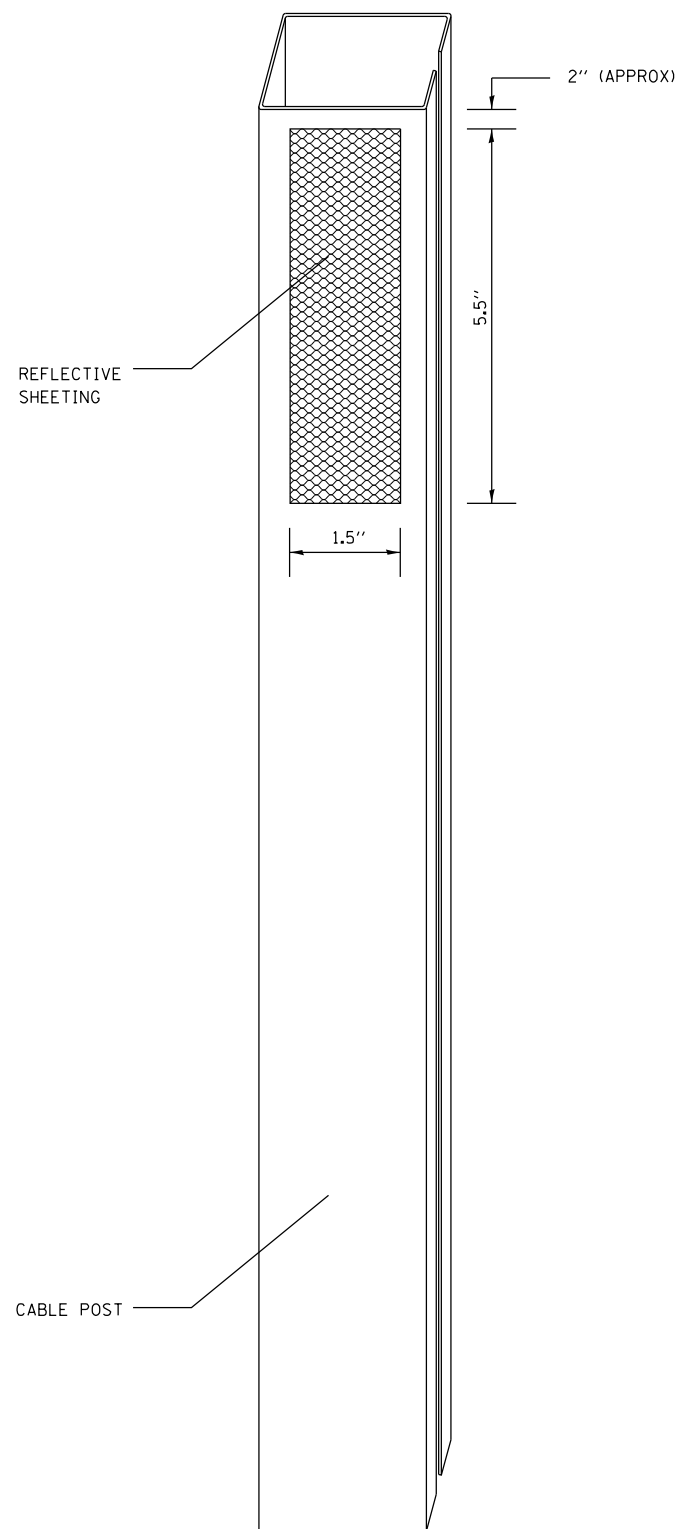
- See Standard 630001 for details of guardrail not shown.
- Thrie beam rail shall be bolted to block-out at all posts.
- See Standard 420401 for details of bridge approach pavement.
- All slope ratios are expressed as units of vertical displacement to units of horizontal displacement (V:H).
- All dimensions are in millimeters (inches) unless otherwise shown.

|  |                             |            |           |   |   |                    |                     |                           |              |                           |  |
|--|-----------------------------|------------|-----------|---|---|--------------------|---------------------|---------------------------|--------------|---------------------------|--|
| FILE NAME =  | USER NAME = Verenskif       | DESIGNED - | REVISED - | <b>STATE OF ILLINOIS<br/>DEPARTMENT OF TRANSPORTATION</b> | <b>PRE-MGS HIGHWAY STANDARD 631031-05<br/>TRAFFIC BARRIER TERMINAL, TYPE 6 EFFECTIVE 4-1-06</b> | F.A. RTE.          | SECTION             | COUNTY                    | TOTAL SHEETS | SHEET NO.                 |  |
| pw:\IL\084EBIDINTEG.illinois.gov\PIWIDOT\Documents\DOT Offices\District 6\Projects\0672\Drawings\LEADsheets\0672\J18-sht-631031-05\TRAFFIC_BARRIER_TERMINAL.T6.dgn | PLotted                     | CHECKED -  | REVISED - |   |   | •VAR               | **                  | VARIOUS                   | 17           | 14                        |  |
| Default  | PLOT SCALE = 26.0000' / in. | DATE -     | REVISED - |   |   | CONTRACT NO. 72J18 |                     | ILLINOIS FED. AID PROJECT |              |                           |  |
|  | PLOT DATE = 4/26/2016       | DATE -     | REVISED - |   |   | SCALE:             | SHEET 1 OF 3 SHEETS | STA.                      | TO STA.      | **D6 CABLE/GUARDRAIL 2017 |  |









**NOTES:**

**MATERIAL:** THE MATERIAL SHALL BE IN ACCORDANCE WITH SECTION 1090 AND 1091 OF THE STANDARD SPECIFICATIONS.

**CONSTRUCTION REQUIREMENTS:** THE REFLECTIVE SHEETING SHALL BE INSTALLED DIRECTLY ON THE CABLE POSTS. THE REFLECTIVE SHEETING SHALL BE INSTALLED AS SHOWN IN THE PLANS, ON EVERY OTHER POST (IN ORDER TO PROVIDE A SPACING OF 40'). THE SURFACE OF THE POST SHALL BE CLEANED OF ALL CONTAMINANTS PRIOR TO THE INSTALLATION OF THE REFLECTIVE SHEETING. THE SURFACE SHALL BE CLEANED USING A 5-8 PERCENT PHOSPHORIC ACID SOLUTION AND RINSED WITH CLEAN WATER OR AS RECOMMENDED BY THE MANUFACTURER OF THE REFLECTIVE SHEETING AND AS APPROVED BY THE ENGINEER.

**BASIS OF PAYMENT:** THIS WORK WILL BE PAID FOR AT THE CONTRACT UNIT PRICE EACH FOR CABLE GUARD MARKER.

|  |                              |            |           |
|--|------------------------------|------------|-----------|
| FILE NAME =  | USER NAME = Verenskif        | DESIGNED - | REVISED - |
| p:\11\084EBIDINTEG\illinois.gov\PIDOT\Documents\DOT Offices\District 6\Projects\0672\Drawings\CADsheets\0672\18-sh-CABLE |                              | DRAWN -    | REVISED - |
| Default  | PLOT SCALE = 100.0000' / in. | CHECKED -  | REVISED - |
|  | PLOT DATE = 4/26/2016        | DATE -     | REVISED - |

**STATE OF ILLINOIS  
DEPARTMENT OF TRANSPORTATION**

**CABLE GUARD MARKER DETAIL**

SCALE: SHEET 1 OF 1 SHEETS STA. TO STA.

| F.A. RTE.          | SECTION | COUNTY  | TOTAL SHEETS              | SHEET NO. |
|--------------------|---------|---------|---------------------------|-----------|
|                    | **      | VARIOUS | 17                        | 17        |
| CONTRACT NO. 72J18 |         |         | ILLINOIS FED. AID PROJECT |           |