

STATE OF ILLINOIS  
DEPARTMENT OF TRANSPORTATION  
DIVISION OF HIGHWAYS

**PROPOSED  
HIGHWAY PLANS**

FAS ROUTE 2701 (IL 37)  
SECTION D7 HMA SAFETY SHLD 2017-3  
PROJECT ACHSIP-2701(104)  
SAFETY SHOULDER  
EFFINGHAM COUNTY

F.A.S. RTE. 2701	SECTION *	COUNTY EFFINGHAM	TOTAL SHEETS 6	SHEET NO. 1
		ILLINOIS CONTRACT NO. 74748		

\* D7 HMA SAFETY SHLD 2017-3

FOR INDEX OF SHEETS, SEE SHEET NO. 02

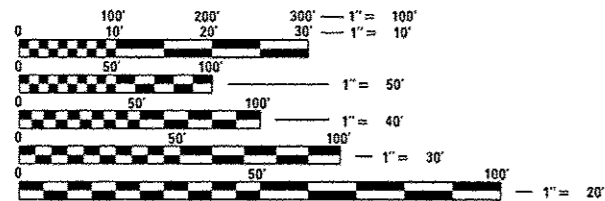
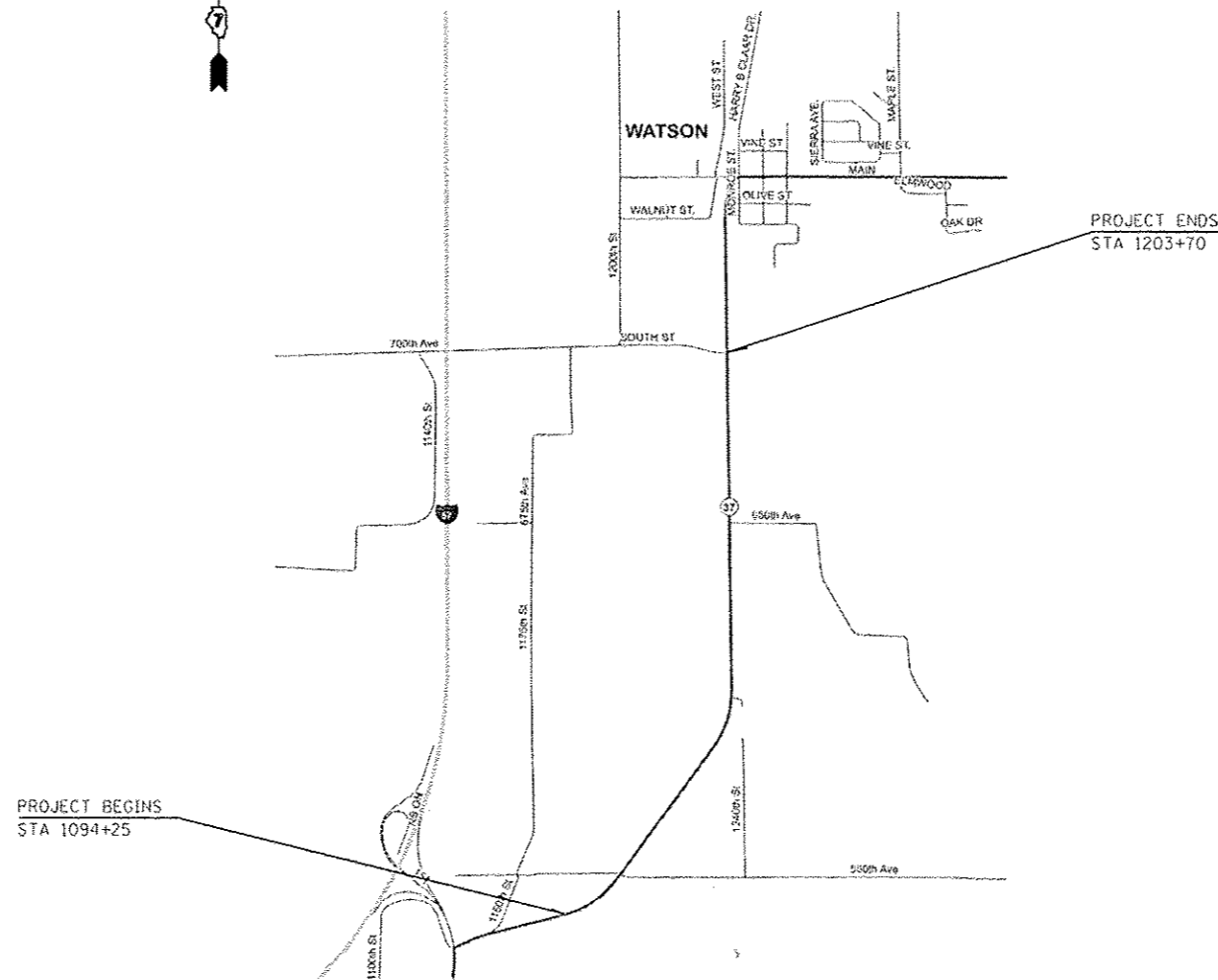
STATION EQUATIONS

STA 1103+79.80 BK = STA 1120+49.30 AH  
STA 1154+05.20 BK = STA 1150+50.80 AH

ADT (2015) = 2000



C-97-042-16



FULL SIZE PLANS HAVE BEEN PREPARED USING STANDARD ENGINEERING SCALES. REDUCED SIZED PLANS WILL NOT CONFORM TO STANDARD SCALES. IN MAKING MEASUREMENTS ON REDUCED PLANS, THE ABOVE SCALES MAY BE USED.

J.U.L.I.E.  
JOINT UTILITY LOCATION INFORMATION FOR EXCAVATION  
1-800-892-0123  
OR 811

PROJECT ENGINEER MARK DAUGHERTY  
PROJECT MANAGER EDWIN TIPSWORD

CONTRACT NO. 74748

GROSS LENGTH = 9,629.9 FT. = 1.824 MILE  
NET LENGTH = 9,629.9 FT. = 1.824 MILE

STATE OF ILLINOIS  
DEPARTMENT OF TRANSPORTATION  
DIVISION OF HIGHWAYS

SUBMITTED April 21 20 16  
Jeffrey M. Smith  
REGION FOUR ENGINEER

July 1 20 16  
Maureen M. Addis P.E.  
ENGINEER OF DESIGN AND ENVIRONMENT

July 1 20 16  
Chris Osman P.E.  
DIRECTOR OF HIGHWAYS, CHIEF ENGINEER

PRINTED BY THE AUTHORITY  
OF THE STATE OF ILLINOIS

GENERAL NOTES

THE CONTRACTOR SHALL PROVIDE INTERNET ACCESS TO THE HOT-MIX ASPHALT PLANT QUALITY CONTROL LAB SO THAT HOT-MIX ASPHALT PLANT REPORTS CAN BE E-MAILED TO THE DISTRICT HEADQUARTERS. THIS WORK SHALL BE INCLUDED IN THE COST OF HOT-MIX ASPHALT ITEMS.

THE MATERIAL USED FOR AGGREGATE WEDGE SHOULDER, TYPE B SHALL BE CRUSHED STONE, CRUSHED CONCRETE, OR RAP.

THE MATERIAL USED FOR AGGREGATE SURFACE COURSE, TYPE B SHALL BE CRUSHED STONE OR CRUSHED CONCRETE.

THE MATERIAL EXCAVATED FOR THE CONSTRUCTION OF THE HMA SHOULDERS SHALL BE REMOVED FROM THE PROJECT ACCORDING TO ARTICLE 202.03 OF THE STANDARD SPECIFICATIONS. THE REMOVAL OF THE EXCAVATED MATERIAL SHALL BE INCLUDED IN THE CONTRACT UNIT PRICE PER UNIT FOR EXCAVATING AND GRADING EXISTING SHOULDER.

OMIT HMA SHOULDER FROM SIDE ROADS AND PRIVATE OR COMMERCIAL ENTRANCES CONSTRUCTED OF OIL AND CHIP, HMA, OR CONCRETE.

OMIT RUMBLE STRIPS ON ALL SIDEROADS, PRIVATE AND COMMERCIAL ENTRANCES AT RADIUS RETURNS. OMIT RUMBLE STRIPS AT MAILBOX TURNOUTS ON BOTH SIDES OF THE MAILBOX OR AS DETERMINED BY THE ENGINEER. RUMBLE STRIPS SHALL NOT BE OMITTED ON FIELD ENTRANCES.

CONCRETE HEADWALL REMOVAL SHALL BE INCLUDED IN THE COST OF PIPE CULVERT REMOVAL

THE MAXIMUM OPEN TRENCH LENGTH ALLOWED WHEN EXCAVATING FOR HMA SHOULDER 8" SHALL BE NO GREATER THAN THAT WHICH THE CONTRACTOR WILL BE ABLE TO PLACE THE BOTTOM 6" LIFT OF HMA SHOULDER IN THE SAME WORKING DAY. THEREFORE, NO DROP-OFFS GREATER THAN 2" WOULD BE LEFT AT THE END OF THAT WORKING DAY.

THE FOLLOWING MIXTURE REQUIREMENTS ARE APPLICABLE FOR THIS PROJECT:

MIXTURE USE: HMA SHOULDERS 8" (TOP 2" LIFT)  
 APPLICATION: HMA SURFACE COURSE, IL 9.5L, N30C  
 PG GRADE: PG 64-22  
 DESIGN AIR VOIDS: 4% @ 30  
 MIXTURE COMPOSITION: IL 9.5L  
 FRICTION AGGREGATE: MIXTURE C

MIXTURE USE: HMA SHOULDERS 8" (BOTTOM 6" LIFT)  
 APPLICATION: HMA BINDER COURSE, IL 19.0L, N30  
 PG GRADE: PG 64-22  
 DESIGN AIR VOIDS: 4% @ 30  
 MIXTURE COMPOSITION: IL 19.0L  
 FRICTION AGGREGATE: N/A

INDEX OF SHEETS

SHEET NO.	DESCRIPTION
1	COVER SHEET
2	INDEX OF SHEETS & GENERAL NOTES
3	SUMMARY OF QUANTITIES
4	LOCATION MAP
5	TYPICAL SECTIONS AND DETAILS
6	SCHEDULE OF QUANTITIES

THE FOLLOWING STANDARDS ARE A PART OF THESE PLANS AND ARE INCLUDED FOLLOWING SHEET NUMBER 6:

000001-06	STANDARD SYMBOLS, ABBREVIATIONS, AND PATTERNS
001006	DECIMAL OF AN INCH AND OF A FOOT
482001-02	HMA SHOULDER ADJACENT TO FLEXIBLE PAVEMENT
542401-02	METAL END SECTIONS FOR PIPE CULVERTS
642006	SHOULDER RUMBLE STRIPS, 8 IN.
701001-02	OFF-ROAD OPERATIONS, 2L, 2W, MORE THAN 15' AWAY
701006-05	OFF-ROAD OPERATIONS, 2L, 2W, 15' TO 24" FROM PAVEMENT EDGE
701301-04	LANE CLOSURE, 2L, 2W, SHORT TIME OPERATIONS
701306-03	LANE CLOSURE, 2L, 2W, SLOW MOVING OPERATIONS DAY ONLY, FOR SPEEDS >= 45 MPH
701326-04	LANE CLOSURE, 2L, 2W, PAVEMENT WIDENING, FOR SPEEDS >= 45 MPH
701901-05	TRAFFIC CONTROL DEVICES

FILE NAME =	USER NAME = staffennk	DESIGNED -	REVISED -	<b>STATE OF ILLINOIS DEPARTMENT OF TRANSPORTATION</b>	<b>GENERAL NOTES &amp; INDEX OF SHEETS</b>	F.A.S. RTE.	SECTION	COUNTY	TOTAL SHEETS	SHEET NO.
p:\11\0846810\INTEG\illinois.gov\PW\DOT\0846810\DOT\Office\District 7\Projects\74748\Drawings\CAD\Sheets\0774748-ent-gennote	PLLOT SCALE = 1/8" = 100.0000' / in.	CHECKED -	REVISED -			2701	-	EFFINGHAM	6	2
Default	PLLOT DATE = 4/25/2016	DATE -	REVISED -			= DT HMA SAFETY SHLD 2017-3		CONTRACT NO. 74748		
						SCALE:	SHEET	OF	SHEETS	STA.

90% FED  
10% STATE

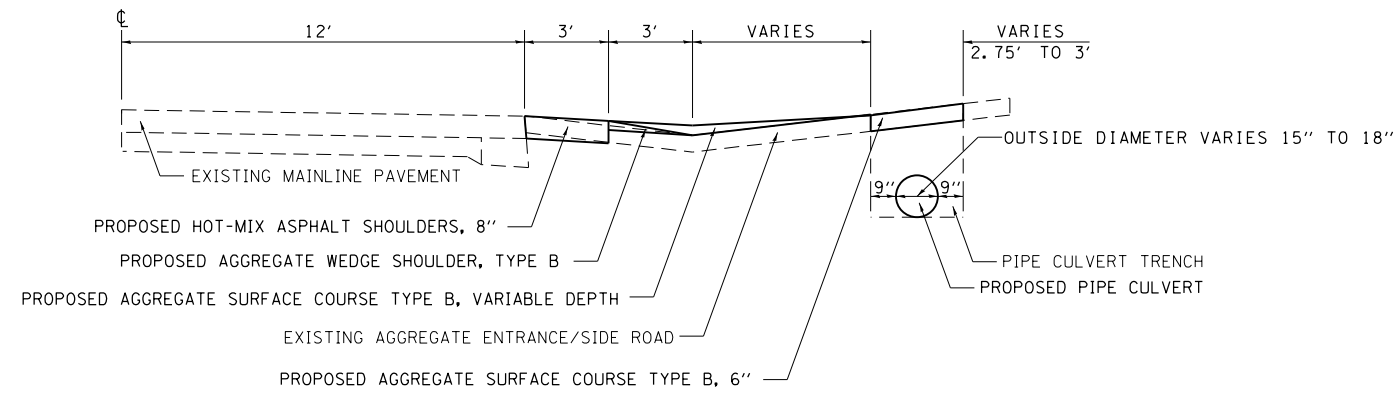
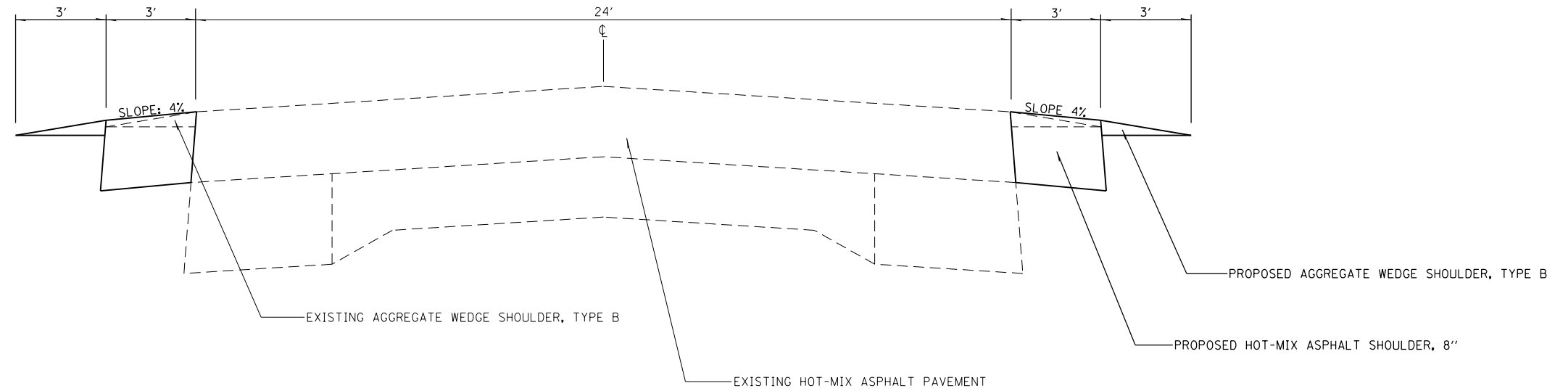
90% FED  
10% STATE

SUMMARY OF QUANTITIES			TOTAL QUANTITIES	CONSTRUCTION TYPE CODE		
CODE NO	ITEM	UNIT		0021		
20200600	EXCAVATING AND GRADING EXISTING SHOULDER	UNIT	188	188		
40200800	AGGREGATE SURFACE COURSE, TYPE B	TON	5	5		
48102100	AGGREGATE WEDGE SHOULDER, TYPE B	TON	713	713		
48203029	HOT-MIX ASPHALT SHOULDERS, 8"	SO YD	6263	6263		
50105220	PIPE CULVERT REMOVAL	FOOT	36	36		
54213450	END SECTIONS 15"	EACH	2	2		
54213453	END SECTIONS 18"	EACH	2	2		
54200220	PIPE CULVERTS, CLASS D, TYPE 1 15"	FOOT	20	20		
54200223	PIPE CULVERTS, CLASS D, TYPE 1 18"	FOOT	20	20		
64200108	SHOULDER RUMBLE STRIPS, 8 INCH	FOOT	18460	18460		
67100100	MOBILIZATION	LSUM	1	1		
70100460	TRAFFIC CONTROL AND PROTECTION, STANDARD	LSUM	1	1		
	701306					
70100500	TRAFFIC CONTROL AND PROTECTION, STANDARD	LSUM	1	1		
	701326					

SUMMARY OF QUANTITIES			TOTAL QUANTITIES	CONSTRUCTION TYPE CODE		
CODE NO	ITEM	UNIT		0021		
70103815	TRAFFIC CONTROL SURVEILLANCE	CAL DA	8	8		
78001110	PAINT PAVEMENT MARKING - LINE 4"	FOOT	18790	18790		
X7015005	CHANGEABLE MESSAGE SIGN	CAL DA	28	28		



TYPICAL SECTION  
STA 1094+25 TO STA 1203+70



AGGREGATE ENTRANCE DETAIL

FILE NAME =	USER NAME = steffenmk	DESIGNED -	REVISED -
p:\11\084EBIDINTEG.illinois.gov\PWIDOT\Documents\IDOT Offices\District 7\Projects\7478\Drawings\CAD\Sheets\0774748-sht-typical		DRAWN -	REVISED -
Default	PLOT SCALE = 100.0000' / in.	CHECKED -	REVISED -
	PLOT DATE = 4/25/2016	DATE -	REVISED -

STATE OF ILLINOIS  
DEPARTMENT OF TRANSPORTATION

TYPICAL SECTIONS  
AND DETAILS

SCALE: SHEET OF SHEETS STA. TO STA.

F.A.S. RTE.	SECTION	COUNTY	TOTAL SHEETS	SHEET NO.
2701		EFFINGHAM	6	5
D7 HMA SAFETY SHLD 2017-3			CONTRACT NO. 74748	
ILLINOIS FED. AID PROJECT				

SHOULDER SCHEDULE

LOCATION			SIDE	LENGTH FOOT	EXCAVATING AND GRADING EXISTING SHOULDER UNIT	HOT-MIX ASPHALT SHOULDERS, 8" SQ YD	AGGREGATE WEDGE SHOULDER, TYPE B TONS	SHOULDER RUMBLE STRIPS, 8" FOOT	PAINT PAVEMENT MARKING - LINE 4" FOOT	
STATION	TO	STATION								
1094+25.00	TO	1103+79.80	LT	954.8	8.8	294.9	33.6	824.8	884.8	
1120+49.30	TO	1154+05.20	LT	3355.9	33.6	1118.6	127.4	3295.9	3355.9	
1150+50.80	TO	1202+50.00	LT	5199.2	51.3	1709.7	194.7	5069.2	5129.2	
1094+25.00	TO	1103+79.80	RT	954.8	8.8	294.9	33.6	824.8	884.8	
1120+49.30	TO	1154+05.20	RT	3355.9	32.9	1095.3	124.7	3225.9	3285.9	
1150+50.80	TO	1203+70.00	RT	5319.2	52.5	1749.7	199.3	5219.2	5249.2	
TOTALS					19139.8	188	6263	713	18460	18790

PIPE CULVERT SCHEDULE

LOCATION	SIDE	PIPE CULVERT REMOVAL	PIPE CULVERTS, CLASS D, TYPE 1 15"	PIPE CULVERTS, CLASS D, TYPE 1 18"	END SECTIONS 15"	END SECTIONS 18"	AGGREGATE SURFACE COURSE, TYPE B
		FOOT	FOOT	FOOT	EACH	EACH	TONS
1189+45.00	RT	17.5		20		2	2.5
1146+30.00	LT	18	20		2		2.5
TOTALS		36	20	20	2	2	5