

INDEX OF SHEETS
SEE SHEET NO. 2

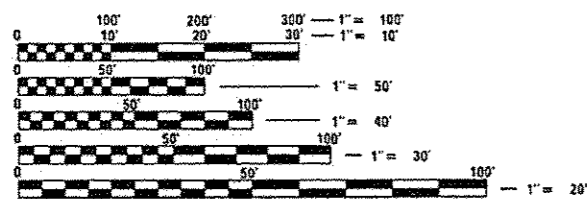
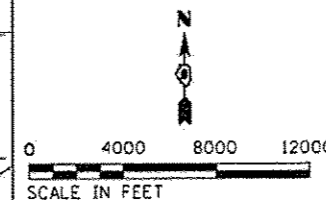
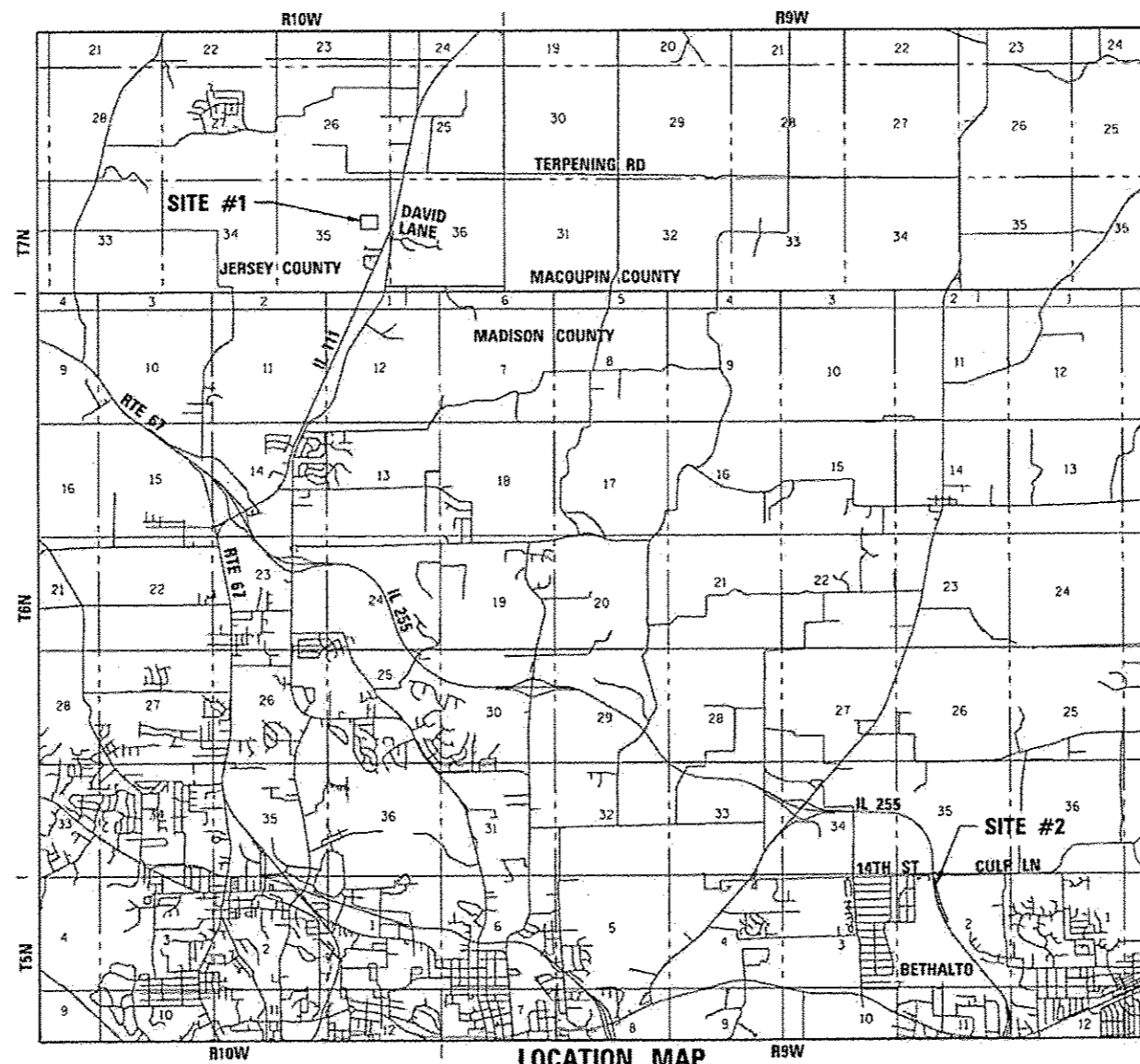
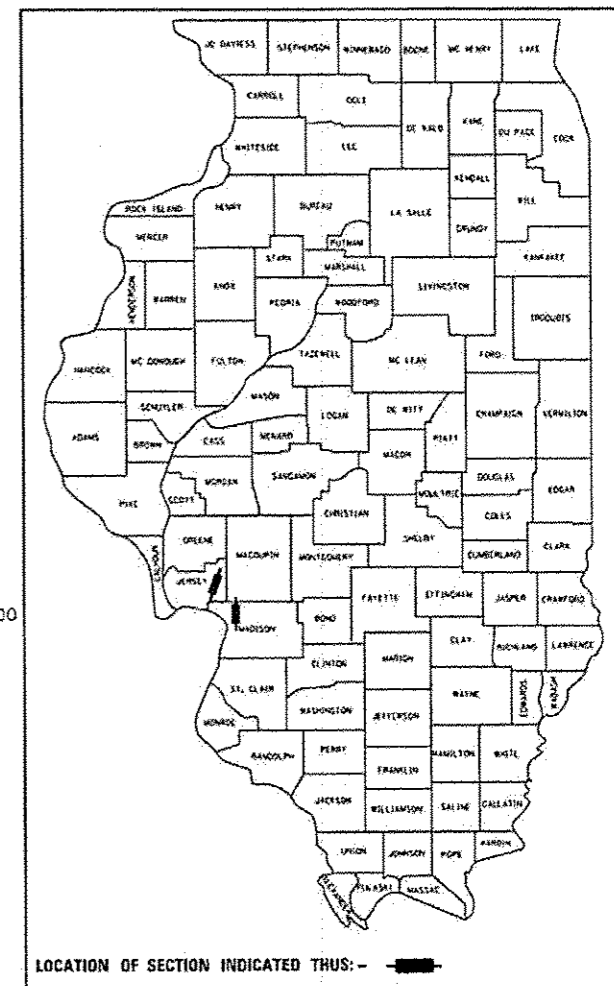
07-29-2016 LETTING ITEM 060

STATE OF ILLINOIS
DEPARTMENT OF TRANSPORTATION
HIGH SPEED RAIL

FAP ROUTE 310 /FAP ROUTE 10A (ILLINOIS ROUTE 255/ILLINOIS ROUTE 111)
SECTION 60-13,15-TM-HSR, 129-TM-HSR
TREE MITIGATION
MADISON & JERSEY COUNTY
D-98-032-16
C-98-027-16
PROJECT: HSR-000V(080)

F.A.P. RTE.	SECTION	COUNTY	TOTAL SHEETS	SHEET NO.
310/10A	60-13,15-TM-HSR, 129-TM-HSR	MADISON/JERSEY	5	1
ILLINOIS CONTRACT NO. 76J52				

D-98-032-16



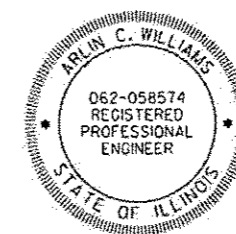
FULL SIZE PLANS HAVE BEEN PREPARED USING STANDARD ENGINEERING SCALES. REDUCED SIZED PLANS WILL NOT CONFORM TO STANDARD SCALES. IN MAKING MEASUREMENTS ON REDUCED PLANS, THE ABOVE SCALES MAY BE USED.

J.U.L.I.E.
JOINT UTILITY LOCATION INFORMATION FOR EXCAVATION
1-800-892-0123
OR 811

DISTRICT 8 NO. (618) 346-3100
PROJECT ENGINEER: KIRK BROWN (618) 346-3112
PROJECT MANAGER: BO WEDMORE (618) 346-3206
TOWNSHIP: WOODRIVER AND PIASA
CONTRACT NO. 76J52



AECOM
345 EAST ASH AVENUE, SUITE B
DECATUR, ILLINOIS 62526
PH. 217-875-4800



Arlin C. Williams DATE: 05/04/2016
ARLIN C. WILLIAMS, P.E.
IL. REG. P.E. NO. 062-058574
EXPIRES: 11-30-2017

FINAL

STATE OF ILLINOIS
DEPARTMENT OF TRANSPORTATION
DIVISION OF HIGHWAYS

SUBMITTED *May 5 2016*
Jeffrey Z. Kain REGION 5 ENGINEER
July 1 2016
Maureen M. Addis ENGINEER OF DESIGN AND ENVIRONMENT
July 1 2016
Arnell Allen DIRECTOR OF PROGRAM DEVELOPMENT

PRINTED BY THE AUTHORITY
OF THE STATE OF ILLINOIS

INDEX OF SHEETS

- 1 COVER SHEET
- 2 INDEX OF SHEETS, HIGHWAY STANDARDS, GENERAL NOTES AND COMMITMENTS
- 3 SUMMARY OF QUANTITIES
- 4 SITE 1 LAYOUT
- 5 SITE 2 LAYOUT

HIGHWAY STANDARDS

- 000001-06 STANDARD SYMBOLS, ABBREVIATIONS AND PATTERNS
- 701101-05 OFF-RD OPERATIONS, MULTILANE, 15' TO 24" FROM PAVEMENT EDGE.
- 701106-02 OFF-RD OPERATIONS, MULTILANE, MORE THAN 15' AWAY
- 701901-05 TRAFFIC CONTROL DEVICES

GENERAL NOTES

- 1. THIS SECTION SHALL BE CONSTRUCTED IN ACCORDANCE WITH THE PLANS. THE "STANDARD SPECIFICATION FOR ROAD AND BRIDGE CONSTRUCTION", ADOPTED APRIL 1, 2016; THE "SUPPLEMENTAL SPECIFICATIONS AND RECURRING SPECIAL PROVISIONS" INCLUDED IN THE PROPOSAL.
- 2. ILLINOIS STATE LAW REQUIRES A 48-HOUR NOTICE BE GIVEN TO ALL UTILITIES WITHIN THE PROJECT AREA BEFORE DIGGING. FIELD MARKING OF FACILITIES MAY BE OBTAINED BY CONTACTING J.U.L.I.E. OR FOR NON-MEMBERS, THE UTILITY COMPANY DIRECTLY. AGENCIES KNOWN TO HAVE FACILITIES WITHIN THE PROJECT AREA ARE AS FOLLOWS:

 SITE LAYOUT 1
 1. AT&T
 2. CITY OF BRIGHTON
 3. NEW WAVE
 4. AMEREN

 SITE LAYOUT 2
 1. AT&T
 2. CITY OF BETHALTO
 3. AMEREN
 4. CHARTER
- 3. ANY REFERENCE TO THE STANDARDS THROUGHOUT THE PLANS SHALL BE INTERPRETED TO BE THE LATEST STANDARDS OF THE DEPARTMENT.
- 4. ALL DETAILS IN THE PLANS SHALL GOVERN CONSTRUCTION OF THIS PROJECT. IN CASE OF CONFLICT WITH ANY STANDARD DRAWINGS INCLUDED, THE SAID DETAILS SHALL TAKE PRECEDENCE AND GOVERN.
- 5. ALL PLANTING MATERIAL SHALL BE SUPPLIED FROM A NURSERY SPECIALIZING IN MATERIALS FOR HABITAT RESTORATION. IF DEEMED NECESSARY BY THE RESIDENT ENGINEER, THE CONTRACTOR SHALL PROVIDE AN ADEQUATE NUMBER OF LATHES 2 WEEKS PRIOR TO THE SCHEDULED TREE PLANTING.
- 6. ALL COORDINATES REFERENCED IN THE PLAN DRAWINGS ARE BASED ON THE ILLINOIS STATE PLANE COORDINATE SYSTEM, WEST ZONE, NAD 83 (2011).
- 7. SEE SPECIAL PROVISION TREE PLANTING - BALLED AND BURLAPPED REGARDING LOCATIONS OF TREE SPECIES.

COMMITMENTS

MAY 4, 2016: NONE

FILE NAME :	USER NAME : *USER*	DESIGNED - ACW	REVISED -	STATE OF ILLINOIS DEPARTMENT OF TRANSPORTATION	INDEX OF SHEETS, HIGHWAY STANDARDS, GENERAL NOTES AND COMMITMENTS	P.A.P. RTE.	SECTION	COUNTY	TOTAL SHEETS	SHEET NO.	
#FILE#	DRAWN - JTC	CHECKED - ACW	REVISED -			310/104	60-13.15-TM-HSR, 129-TM-HSR	MADISON/JERSEY	5	2	
#MODELNAME#	PLDT DATE : *DATE*	DATE - 05-04-2016	REVISED -			CONTRACT NO. 76J52					
SCALE: NTS SHEET 1 OF 1 SHEETS STA. TO STA.						ILLINOIS FED. AID PROJECT					

D:\96163-sta-index-1rec.dgn 5/12/2016 3:49:27 PM

100% FED,

CODE NO.	ITEM	UNIT	TOTAL QUANTITY	CONSTRUCTION CODE	
				HSR TREE MITIGATION SITE 1 JERSEY CO 100% HSR RURAL 0031	HSR TREE MITIGATION SITE 2 MADISON CO 100% HSR URBAN 0031
67100100	MOBILIZATION	L SUM	1	0.5	0.5
A2001524	TREE, ACER SACCHARINUM SILVER QUEEN (SILVER QUEEN SILVER MAPLE), 3" CALIPER, BALLED AND BURLAPPED	EACH	101	101	
A2002616	TREE, CARYA CORDIFORMIS (BITTERNUT HICKORY), 2" CALIPER, BALLED AND BURLAPPED	EACH	102	102	
A2002720	TREE, CARYA OVATA (SHAGBARK HICKORY), 2-1/2" CALIPER, BALLED AND BURLAPPED	EACH	101	101	
A2006624	TREE, QUERCUS IMBRICARIA (SHINGLE OAK), 3" CALIPER, BALLED AND BURLAPPED	EACH	52	52	
A2007122	TREE, QUERCUS RUBRA (RED OAK), 3" CALIPER, BALLED AND BURLAPPED	EACH	51	51	
A2007624	TREE, TAXODIUM DISTICHUM (COMMON BALD CYPRESS), 3" CALIPER, BALLED AND BURLAPPED	EACH	27		27
B2001124	TREE, CERCIS CANADENSIS (EASTERN REDBUD), 3" CALIPER, TREE FORM, BALLED AND BURLAPPED	EACH	51	51	
B2001384	TREE, CORNUS FLORIDA 'CHEROKEE CHIEF', (PINK FLOWERING DOGWOOD), 1-3/4 CALIPER, BALLED AND BURLAPPED	EACH	52	52	
D2012204	EVERGREEN, PINUS STROBUS (EASTERN WHITE PINE), 3" CALIPER, BALLED AND BURLAPPED	EACH	49		49
K0029618	WEED CONTROL, BROADLEAF IN TURF	GALLON	1.0	0.75	0.25
K0029632	WEED CONTROL, NON-SELECTIVE AND NON-RESIDUAL	GALLON	1.0	0.75	0.25
K0029634	WEED CONTROL, PRE-EMERGENT GRANULAR HERBICIDE	POUND	10	8	2
X2503000	MAINTENANCE MOWING	ACRE	11.9	10.4	1.5

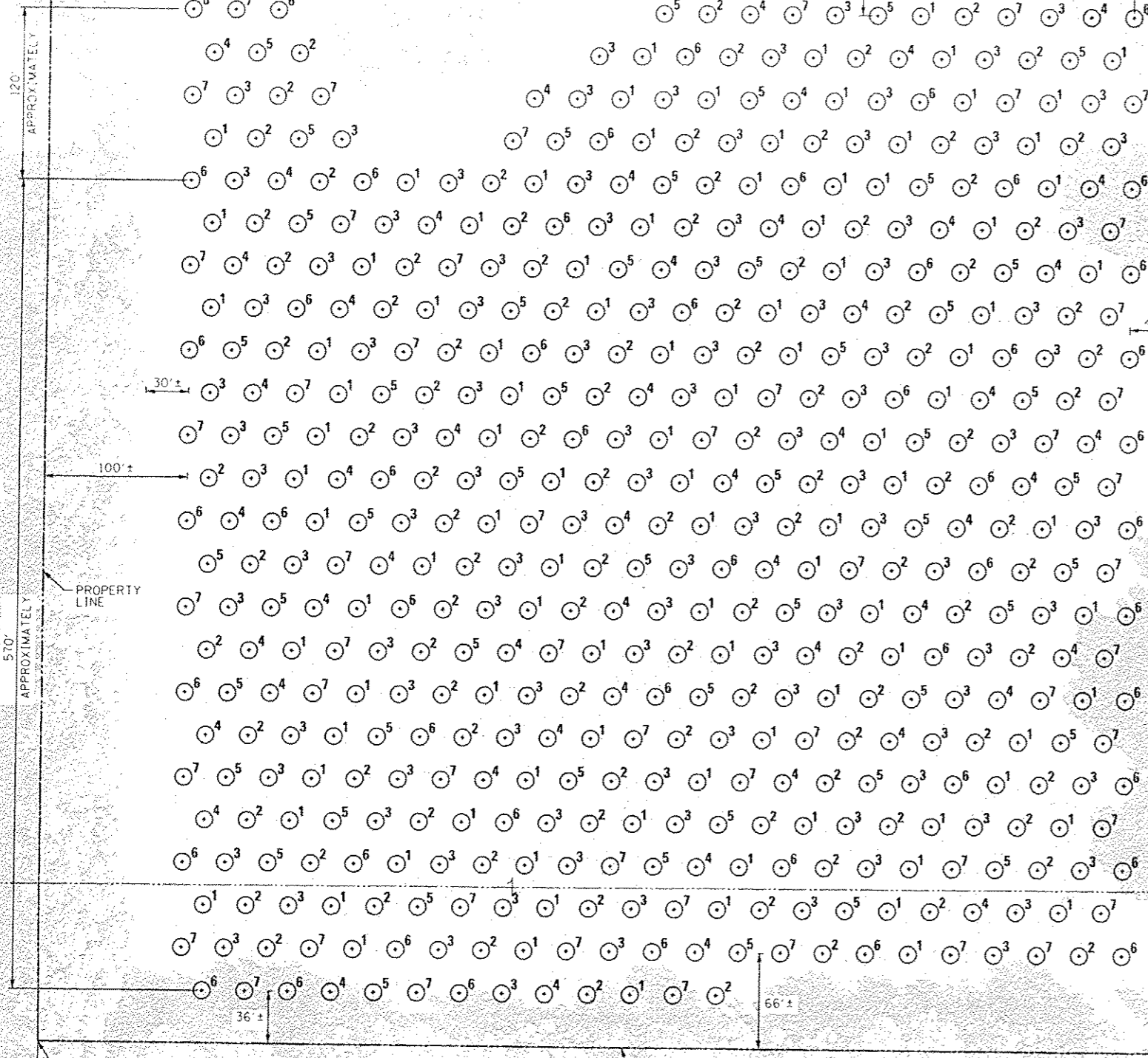
19

D:\7\1163-161-161-161-trees.dgn 5/3/2016 4:42:19 PM

N = 852,730.29
E = 2,295,778.19

N = 852,723.57
E = 2,296,578.09

APPROXIMATELY 660'
PROPERTY LINE



NOTES
THERE ARE A TOTAL OF 510 TREES TO BE PLANTED ON SITE 1; THE TREES ARE BALLED AND BURLAPPED STOCK AND ARE TO BE SPACED 30 FT APART ON CENTER.

TREE SPECIES FOR SITE 1 ARE AS FOLLOWS:

- 1 (101) SILVER QUEEN MAPLE (ACER SACCHARINUM)
- 2 (102) BITTERNUT HICKORY (CARYA CORDIFORMIS)
- 3 (101) SHAGBARK HICKORY (CARYA OVATA)
- 4 (52) SHINGLE OAK (QUERCUS IMBRICARIA)
- 5 (51) RED OAK (QUERCUS RUBRA)
- 6 (51) EASTERN REDBUD (CERCIS CANADENSIS)
- 7 (52) PINK FLOWERING DOGWOOD (CORNUS FLORIDA)

N = 852,077.71
E = 2,296,571.41

N = 851964.65
E = 2,296570.24

N = 851,974.06
E = 2,295,771.03

STATE OF ILLINOIS
DEPARTMENT OF TRANSPORTATION

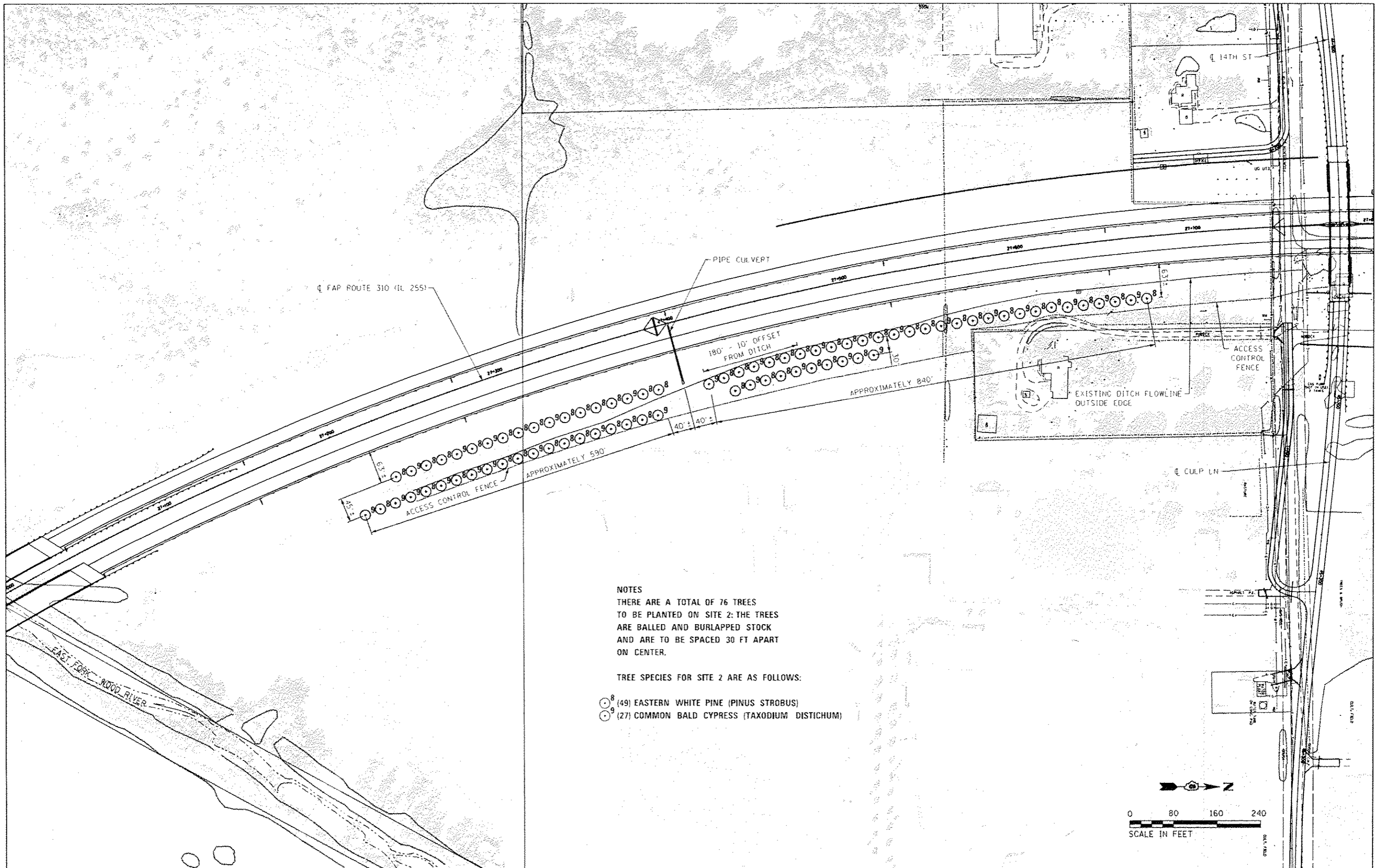
SITE 1 LAYOUT
DAVID LANE TREE MITIGATION

FILE NAME	USER NAME	DESIGNED	REVISED
FILE #	USER#	ACW	-
		DRAWN	REVISED
		JTC	-
		CHECKED	REVISED
		ACW	-
		DATE	REVISED
		05-04-2016	-

SCALE: 1"=50'	SHEET 1	OF 1 SHEETS	STA.	TO STA.
---------------	---------	-------------	------	---------

F.A. RTE.	SECTION	COUNTY	TOTAL SHEETS	SHEET NO.
330/10A	60-1315-14-HSR, 129-14-HSR	MADISON/JERSEY	5	4
CONTRACT NO. 72J52				
ILLINOIS FED. AID PROJECT				

DX76752-dtl plan location1-tree.dgn:0,20:2016-2-23 03:PM



NOTES
 THERE ARE A TOTAL OF 76 TREES
 TO BE PLANTED ON SITE 2: THE TREES
 ARE BALLED AND BURLAPPED STOCK
 AND ARE TO BE SPACED 30 FT APART
 ON CENTER.

TREE SPECIES FOR SITE 2 ARE AS FOLLOWS:

- ⊙⁸ (49) EASTERN WHITE PINE (PINUS STROBUS)
- ⊙⁹ (27) COMMON BALD CYPRESS (TAXODIUM DISTICHUM)

FILE NAME :	USER NAME / #USCH#	DESIGNED - ACW	REVISED -	STATE OF ILLINOIS DEPARTMENT OF TRANSPORTATION	SITE 2 LAYOUT DAVID LANE TREE MITIGATION			F.A. R.F.#	SECTION	COUNTY	TOTAL SHEETS	SHEET NO.		
#FILE#		DRAWN - JTC	REVISED -		SCALE: 1"=80'	SHEET 1	OF 1 SHEETS	STA.	TO STA.	310/104	60-13.15-1M-MSR, 129-1M-MSR	WADSWORTH/JERSEY	5	5
#MODELNAME#		CHECKED - ACW	REVISED -		CONTRACT NO. 76J52									
		DATE - 05-04-2016	REVISED -		ILLINOIS FED. AID PROJECT									