

STATE OF ILLINOIS
DEPARTMENT OF TRANSPORTATION

F.A.P. RTE.	SECTION	COUNTY	TOTAL SHEETS	SHEET NO.
332	D9 CM PATCH 2017-2	WHITE	6	1
		ILLINOIS	CONTRACT NO. 78535	

FOR INDEX OF SHEETS, SEE SHEET NO. 3

TRAFFIC DATA

IL 1
2016 ADT = 6010 WITH 27.3% TRUCKS

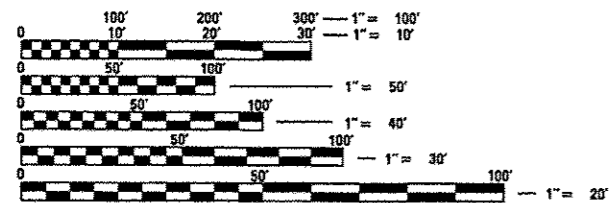
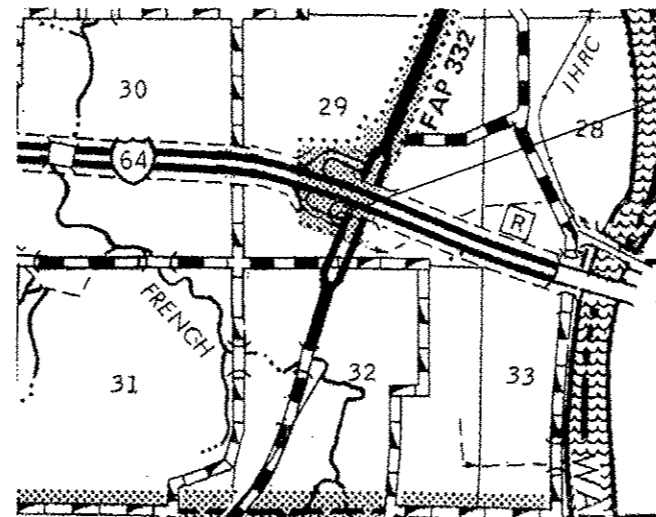
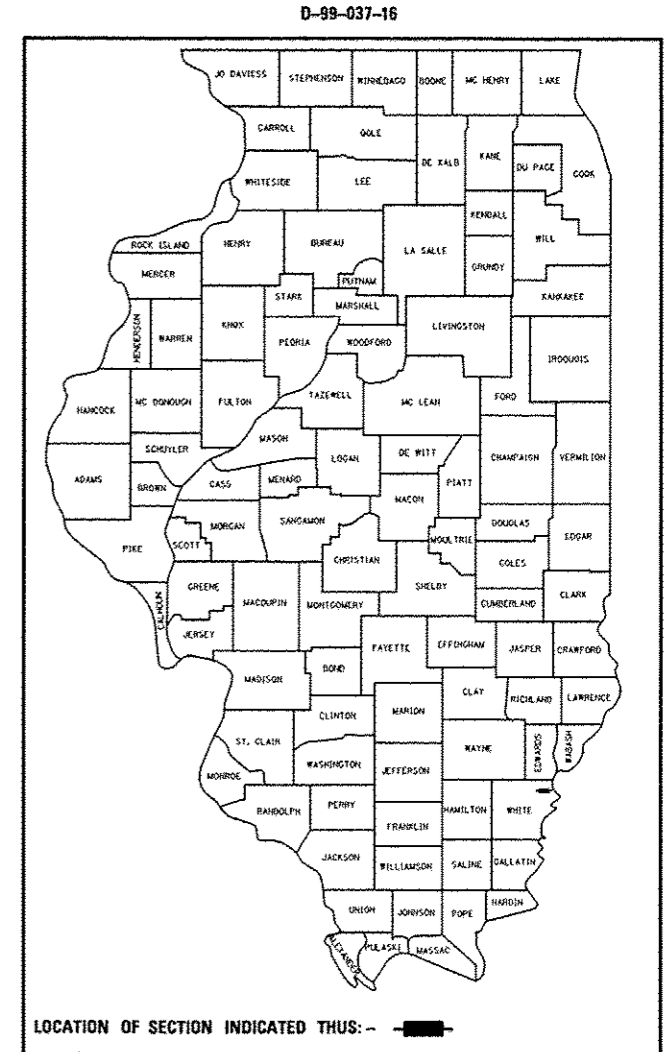
I-64 EB RAMP
2016 ADT = 2530 WITH 20% TRUCKS

PROPOSED
HIGHWAY PLANS

FAP ROUTE 332 (IL 1)
SECTION D9 CM PATCH 2017-2

PAVEMENT PATCHING
WHITE COUNTY

C-99-037-16



FULL SIZE PLANS HAVE BEEN PREPARED USING STANDARD ENGINEERING SCALES. REDUCED SIZED PLANS WILL NOT CONFORM TO STANDARD SCALES. IN MAKING MEASUREMENTS ON REDUCED PLANS, THE ABOVE SCALES MAY BE USED.

J.U.L.I.E.
JOINT UTILITY LOCATION INFORMATION FOR EXCAVATION
1-800-892-0123
OR 811

PROJECT ENGINEER: ELISE KNOP
PROJECT MANAGER: CHARLES STEIN

CONTRACT NO. 78535

GROSS LENGTH = 463 FT. = 0.09 MILE
NET LENGTH = 463 FT. = 0.09 MILE

STATE OF ILLINOIS
DEPARTMENT OF TRANSPORTATION

SUBMITTED May 3 2016
Jeffrey A. Keim
REGION FIVE ENGINEER

July 1 2016
Maureen M. Addis, P.E.
ENGINEER OF DESIGN AND ENVIRONMENT

July 1 2016
Paul A. ...
DIRECTOR OF PROGRAM DEVELOPMENT

PRINTED BY THE AUTHORITY
OF THE STATE OF ILLINOIS

Prepared By: *Polie E*
DISTRICT STUDIES & PLANS ENGINEER

Examined By: *Nancy*
DISTRICT LAND ACQUISITION ENGINEER

Examined By: *Carrie Nylson*
DISTRICT PROGRAM DEVELOPMENT ENGINEER

Examined By: *Val*
DISTRICT OPERATIONS ENGINEER

Examined By: *KR*
DISTRICT PROJECT IMPLEMENTATION ENGINEER

Examined By: *Douglas J. T...*
DISTRICT CONSTRUCTION ENGINEER

Examined By: *[Signature]*
DISTRICT MATERIALS ENGINEER

FILE NAME =	USER NAME = knopen	DESIGNED -	REVISED -	STATE OF ILLINOIS DEPARTMENT OF TRANSPORTATION	SIGNATURE SHEET				F.A.P. RTE.	SECTION	COUNTY	TOTAL SHEETS	SHEET NO.
p:\N\1604EB\INTEG.all\mes.gov\WIDOT\Documents\DDOT Offices\District 3\Projects\70535\DRAWING\CAD\Sheets\70535-sh.dgn		CHECKED -	REVISED -		332	D9 CM PATCH 2017-2	WHITE	6	2				
Default	PLOT SCALE = 1/32" = 1' / in.	DATE -	REVISED -		SCALE:	SHEET	OF	SHEETS	STA.	TO STA.	CONTRACT NO. 78535		
	PLOT DATE = 4/29/2016				ILLINOIS FED. AID PROJECT								

INDEX OF SHEETS

<u>SHEET NO.</u>	<u>DESCRIPTION</u>
1	COVER SHEET
2	SIGNATURE SHEET
3	INDEX OF SHEETS, COMMITMENTS, GENERAL NOTES, AND STANDARDS
4	SUMMARY OF QUANTITIES
5	SCHEDULES OF QUANTITIES
6	PLAN SHEET

HIGHWAY STANDARDS

000001-06	STANDARD SYMBOLS, ABBREVIATIONS, AND PATTERNS
001001-02	AREAS OF REINFORCEMENT BARS
001006	DECIMAL OF INCH AND FOOT
420701-03	PAVEMENT WELDED WIRE REINFORCEMENT
442101-07	CLASS B PATCHES
701206-03	LANE CLOSURE 2L 2W -NIGHT ONLY 45 MPH OR MORE
701301-04	LANE CLOSURE 2L 2W - SHORT TIME OPERATION
701451-03	RAMP CLOSURE FREEWAY EXPRESSWAY
701901-05	TRAFFIC CONTROL DEVICES

GENERAL NOTES

THE QUANTITIES SHOWN IN THE PLANS FOR PATCHING ARE ESTIMATES. THE ACTUAL AMOUNT OF PATCHING REQUIRED SHALL BE DETERMINED BY THE ENGINEER IN THE FIELD. THE LOCATIONS OF THE PATCHES SHALL BE DETERMINED BY THE ENGINEER IN THE FIELD.

COMMITMENTS

NONE

FILE NAME =	USER NAME = knopen	DESIGNED -	REVISED -	STATE OF ILLINOIS DEPARTMENT OF TRANSPORTATION	INDEX OF SHEETS, STANDARDS, GENERAL NOTES	F.A.P. RTE.	SECTION	COUNTY	TOTAL SHEETS	SHEET NO.
p:\11\084EBID\INTEG\Illinois.gov\PKIDOT\Documents\DOT Offices\Districts 9\Projects\78535\084EBID\CAD\sheet\78535-ah.dgn	DRAWN -	REVISED -	REVISED -			332	D9 CM PATCH 2017-2	WHITE	6	3
PLOT SCALE = 100,0000 1/ in.	CHECKED -	REVISED -	REVISED -			CONTRACT NO. 78535				
PLOT DATE = 5/9/2016	DATE -	REVISED -	REVISED -			ILLINOIS FED. AID PROJECT				
Default				SCALE: SHEET OF SHEETS STA. TO STA.						

SUMMARY OF QUANTITIES

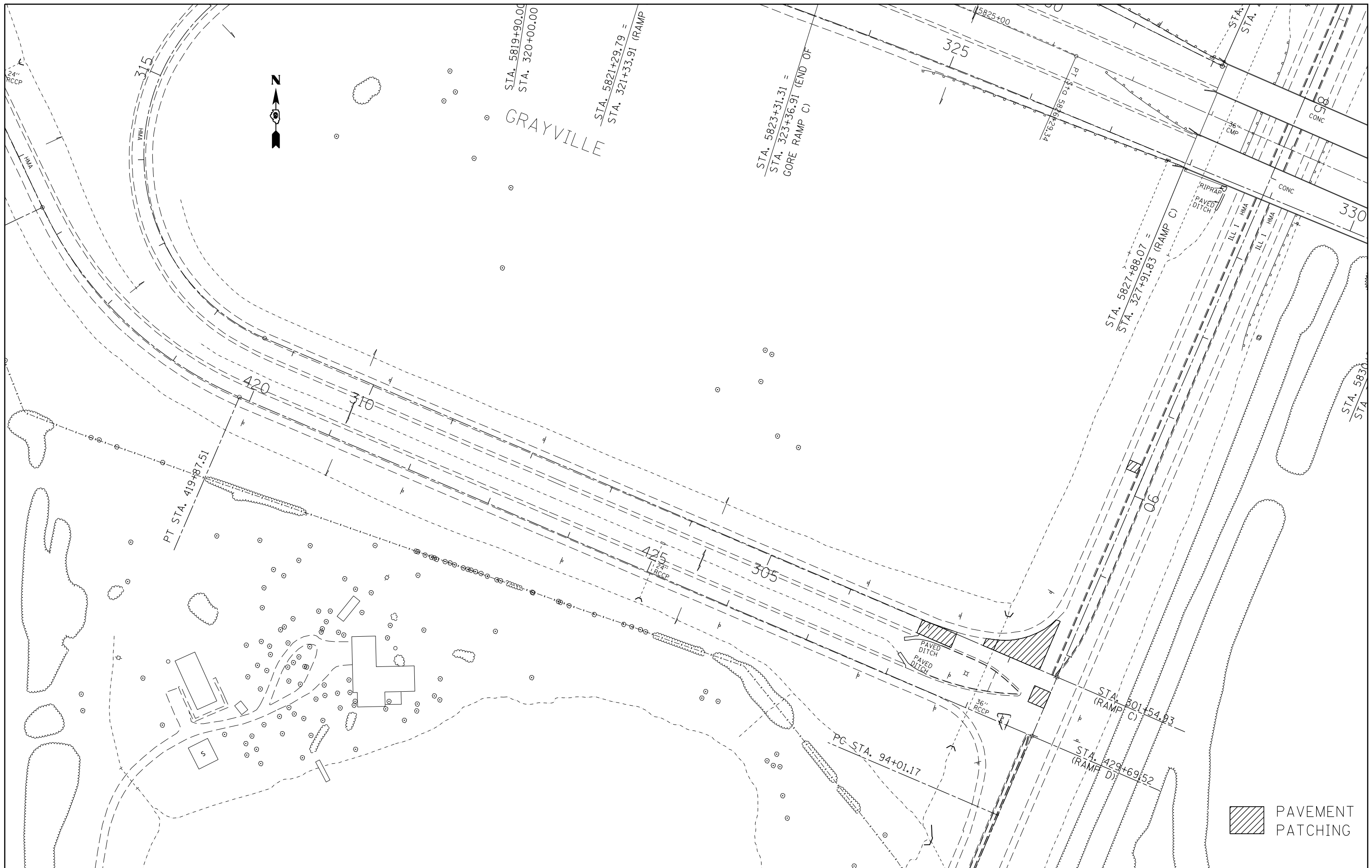
WHITE
IL 1, (FAP 332)
100% STATE
RURAL
ROADWAY
0005

CODE NUMBER	ITEM DESCRIPTION	UNIT	
44200050	WELDED WIRE REINFORCEMENT	SO YD	378
44201023	CLASS B PATCHES, TYPE III, 14 INCH	SO YD	17
44201025	CLASS B PATCHES, TYPE IV, 14 INCH	SO YD	360
44201299	DOWEL BARS 1 1/2"	EACH	379
44213200	SAW CUTS	FOOT	627
44213204	TIE BARS 3/4"	EACH	44
67100100	MOBILIZATION	LSUM	1
70100820	TRAFFIC CONTROL AND PROTECTION, STANDARD 701451	LSUM	1
70106800	CHANGEABLE MESSAGE SIGN	CAL MO	12
70200100	NIGHTTIME WORK ZONE LIGHTING	LSUM	1
X9700015	TRAFFIC CONTROL AND PROTECTION, STANDARD 701206 (SPECIAL)	LSUM	1

//

PATCHING SCHEDULE

LOCATION	LENGTH	WIDTH	CLASS B, TY III, 14"	CLASS B, TY IV, 14"	SAW CUTS	TIE BARS	DOWEL BARS	WELDED WIRE REINF.	COMMENTS
	FOOT	FOOT	SQYD	SQYD	FOOT	EACH	EACH	SQ YD	
IL 1									
STA 89+70	11	14	17		64	0	24	17	
STA 91+67	64	71		240	309	0	251	240	CORNER PIECE
STA 92+67	20	20		44	120	0	76	44	
I-64 EB RAMP									
STA 303+10	43	16		76	134	44	28	76	
TOTALS									
			17	360	627	44	379	378	



 PAVEMENT PATCHING

FILE NAME =	USER NAME = knopen	DESIGNED -	REVISED -
p:\11\084EBIDINTEG\illinois.gov\PIWIDOT\Documents\IDOT Offices\District 9\Projects\78535\Drawings\CAD\Sheets\78535-sht.dgn		DRAWN -	REVISED -
Default	PLOT SCALE = 100.0000' / in.	CHECKED -	REVISED -
	PLOT DATE = 5/9/2016	DATE -	REVISED -

**STATE OF ILLINOIS
DEPARTMENT OF TRANSPORTATION**

PLAN SHEET			
SCALE:	SHEET	OF SHEETS	STA. TO STA.

F.A.P. RTE.	SECTION	COUNTY	TOTAL SHEETS	SHEET NO.
332	D9 CM PATCH 2017-2	WHITE	6	6
CONTRACT NO. 78535				
ILLINOIS FED. AID PROJECT				