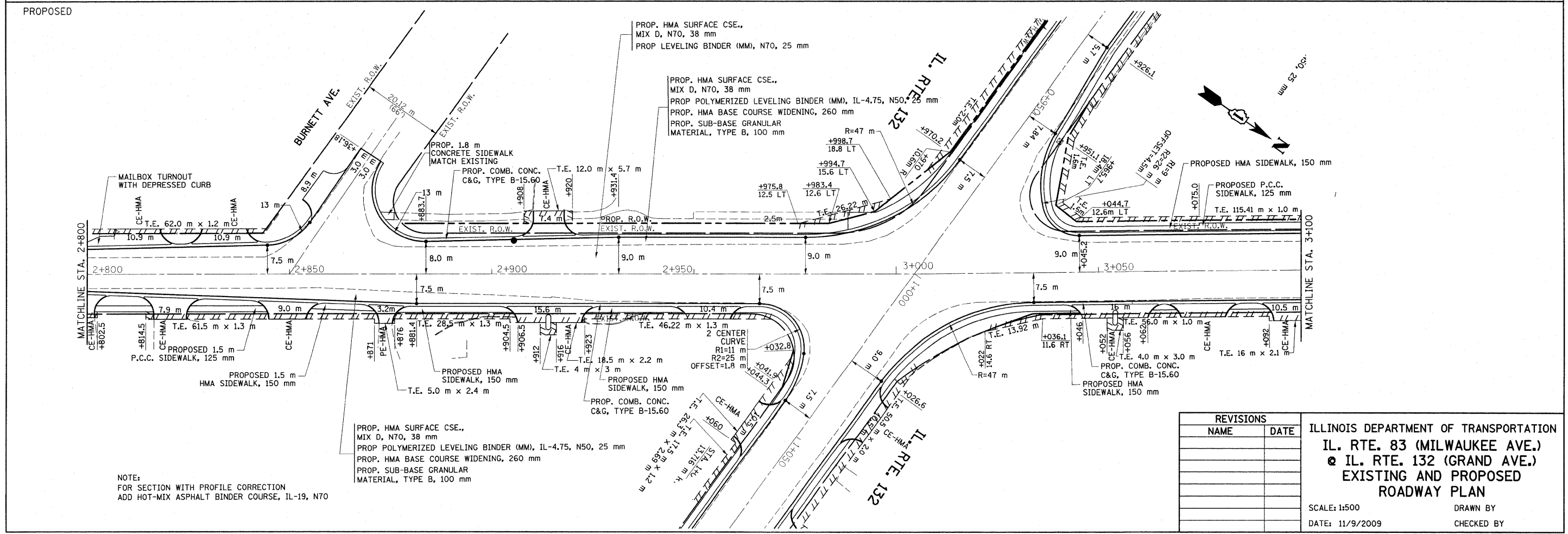
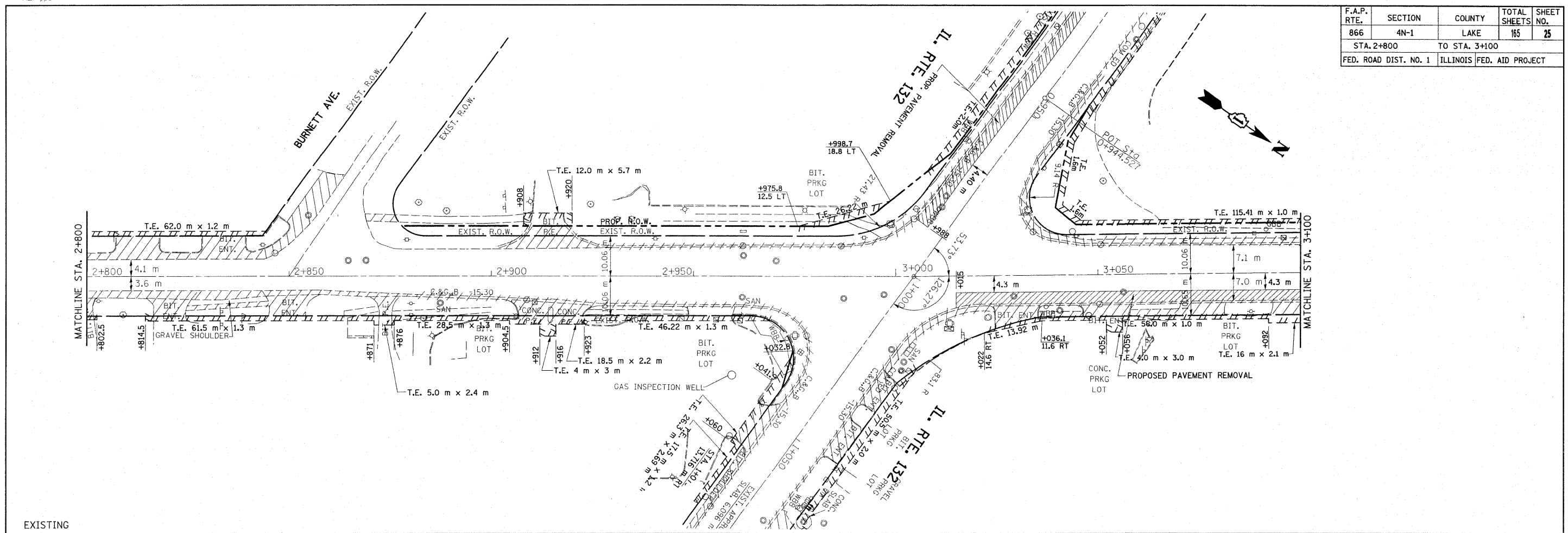


F.A.P. RTE.	SECTION	COUNTY	TOTAL SHEETS	SHEET NO.
866	4N-1	LAKE	165	25
STA. 2+800		TO STA. 3+100		
FED. ROAD DIST. NO. 1		ILLINOIS FED. AID PROJECT		



NOTE:  
FOR SECTION WITH PROFILE CORRECTION  
ADD HOT-MIX ASPHALT BINDER COURSE, IL-19, N70

REVISIONS	
NAME	DATE

ILLINOIS DEPARTMENT OF TRANSPORTATION  
**IL. RTE. 83 (MILWAUKEE AVE.)**  
**IL. RTE. 132 (GRAND AVE.)**  
**EXISTING AND PROPOSED**  
**ROADWAY PLAN**

SCALE: 1:500  
 DATE: 11/9/2009

DRAWN BY  
 CHECKED BY