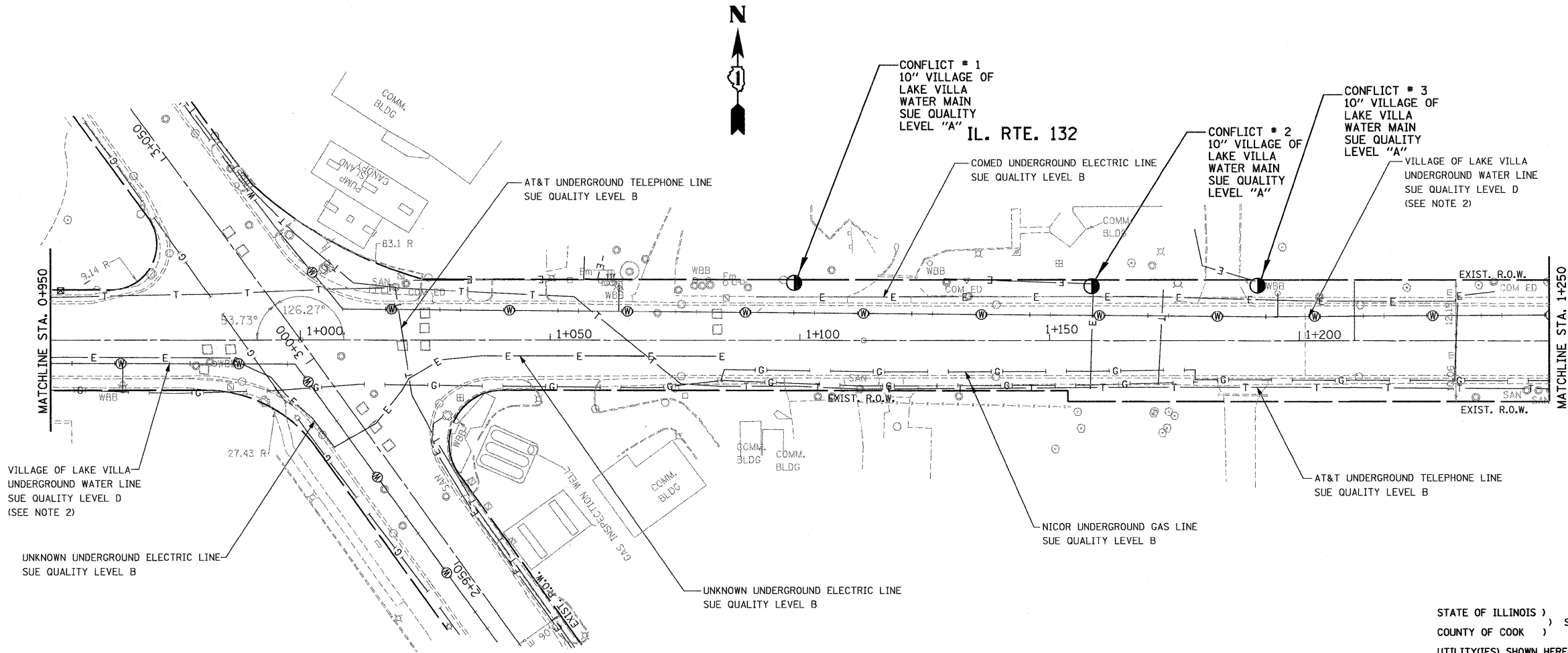


F.A.P. RTE.	SECTION	COUNTY	TOTAL SHEETS	SHEET NO.
866	4N-1	LAKE	165	69A
STA.		TO STA.		
FED. ROAD DIST. NO. 1		ILLINOIS	FED. AID PROJECT	

VERIFIED UTILITY INFORMATION - SUE QUALITY LEVEL A

CONFLICT NO.	SIZE / TYPE	NORTHING	EASTING	STATION	OFFSET	TOP OF UTILITY	EXISTING CUT	REFERENCE GROUND ELEV.	COMMENTS
1	10" WATER MAIN	638294.1273	321517.7095	1+098.834	11.537m LT.	204.972	1.219	206.191	VILLAGE OF LAKE VILLA
2	10" WATER MAIN	638293.4183	321577.2476	1+158.373	10.914m LT.	204.305	2.088	206.393	VILLAGE OF LAKE VILLA
3	10" WATER MAIN	638293.4802	321610.4800	1+191.605	11.030m LT.	204.941	1.911	206.852	VILLAGE OF LAKE VILLA



STATE OF ILLINOIS)
COUNTY OF COOK) S.S.

UTILITY(IES) SHOWN HEREON HAVE BEEN INVESTIGATED BY ASE IN ACCORDANCE WITH SUE INDUSTRY STANDARDS QUALITY LEVEL A (QLA). ALL OTHER INFORMATION SHOWN HAS BEEN PROVIDED BY OTHERS.

FIELD WORK WAS PERFORMED BETWEEN THE 5TH OF FEBRUARY AND 22ND DAY OF FEBRUARY, A.D., 2010.

IN WITNESS WHEREOF, I HAVE HEREUNTO SET MY HAND AND SEAL THIS 1ST DAY OF MARCH A.D., 2010. CHICAGO, IL.



Steven M. Rienks
STEVEN M. RIENKS - ILLINOIS PROFESSIONAL ENGINEER NUMBER 62-044619
MY LICENSE EXPIRES 11/30/2011

UTIL-1

- NOTES:**
- HORIZONTAL CONTROL, VERTICAL CONTROL, CENTERLINE ALIGNMENT, AND TOPOGRAPHIC FEATURES WERE SUPPLIED BY ILLINOIS DEPARTMENT OF TRANSPORTATION, CONTRACT NUMBER 60931 DATED MAY 27, 2008.
 - SOME WATER MAINS WERE INDETERMINABLE. THEY ARE DRAWN USING THE ATLAS PROVIDED BY THE VILLAGE OF LAKE VILLA.

- LEGEND**
- T — EXISTING UNDERGROUND TELEPHONE
 - E — EXISTING UNDERGROUND ELECTRIC
 - G — EXISTING UNDERGROUND GAS
 - W — EXISTING UNDERGROUND WATER
 - ⊙ EXISTING UNDERGROUND WATER (PER UTILITY ATLAS MAPS)
 - QUALITY LEVEL A (QLA) HOLE LOCATION



REVISIONS	
NAME	DATE

ILLINOIS DEPARTMENT OF TRANSPORTATION
IL. RTE. 83 (MILWAUKEE AVE.)
@ IL. RTE. 132 (GRAND AVE.)
SUE INVESTIGATION OF UNDERGROUND UTILITIES

SCALE: 1:500
DATE: 3/01/2010

DRAWN BY WMB
CHECKED BY SMR