

Bench Mark: "x" cut in top of east most bolt on east base of Citgo sign, northeast corner of Route 83 and Route 132.
Elev. 241.861

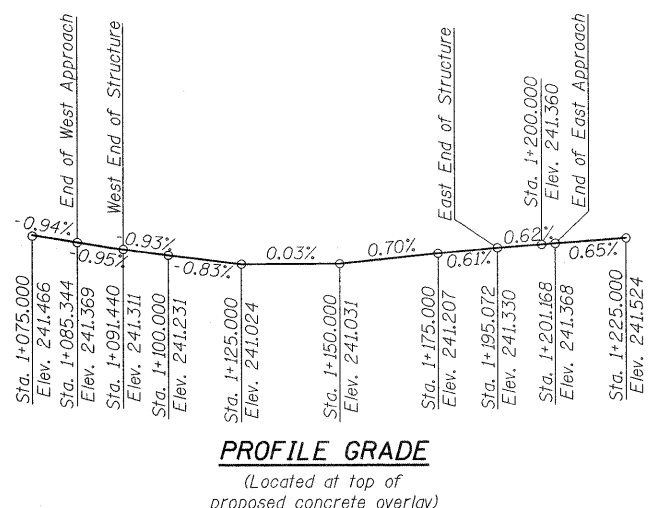
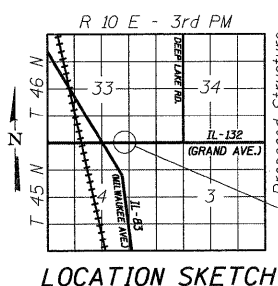
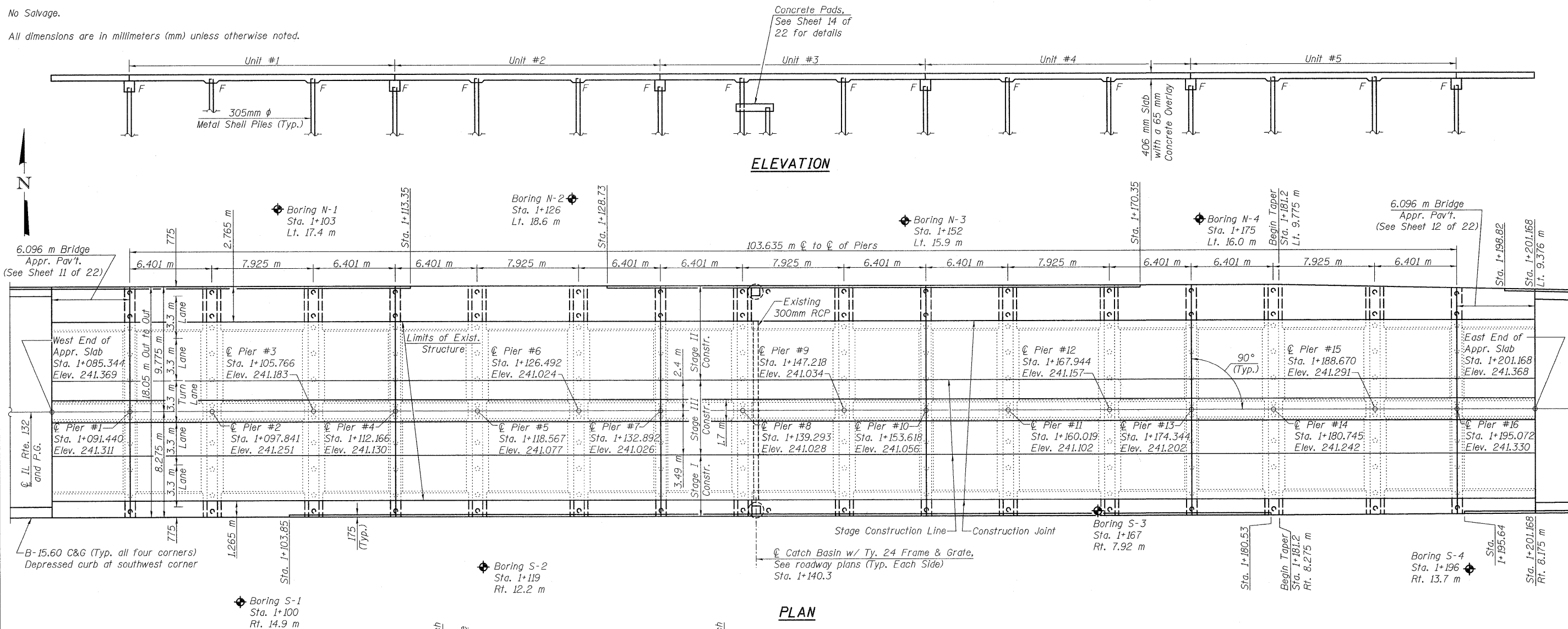
ROUTE NO.	SECTION	COUNTY	TOTAL SHEETS	SHEET NO.	SHEET NO. 1 of 22
F.A.P. 866	4N-1	LAKE	165	70	
FED. ROAD DIST. NO. 7	ILLINOIS	FED. AID PROJECT-			

Contract No.: 60931

Existing Structure: A 15-span reinforced concrete slab structure consisting of continuous three-span units supported on concrete piles. Each unit has a width of 14.021 m and a length of 20.726 m. The overall length of the structure is 103.632 m. Utilizing stage construction, one lane of traffic in each direction and a westbound left turn lane shall be maintained at all times.

No Salvage.

All dimensions are in millimeters (mm) unless otherwise noted.



LOADING MS18
Allow 1.2 kN/m² for future wearing surface.

DESIGN SPECIFICATIONS
AASHTO 17th Ed. - 2002

DESIGN STRESSES
FIELD UNITS - NEW CONST.
F_c = 24 MPa
f_y = 420 MPa (reinforcement)

APPROVED
FOR STRUCTURAL ADEQUACY ONLY

Ralph E. Anderson (TSD)
ENGINEER OF BRIDGES AND STRUCTURES

STATE OF ILLINOIS
BRANDON L. BUZZELL
6358 NAPERVILLE, IL
LICENSED STRUCTURAL ENGINEER
Expires 11-30-10

RN GROUP
R/N GROUP, INC.
WHEATON, IL 60187

REVISIONS	
NAME	DATE

ILLINOIS DEPARTMENT OF TRANSPORTATION
GENERAL PLAN AND ELEVATION
IL RTE. 132 LAND BRIDGE
FAP RTE 866 - SEC 4N-1
LAKE COUNTY
STA. 1+143.3

SN 049-D002
DATE: 11-06-09

DRAWN BY BLB
CHECKED BY WJV