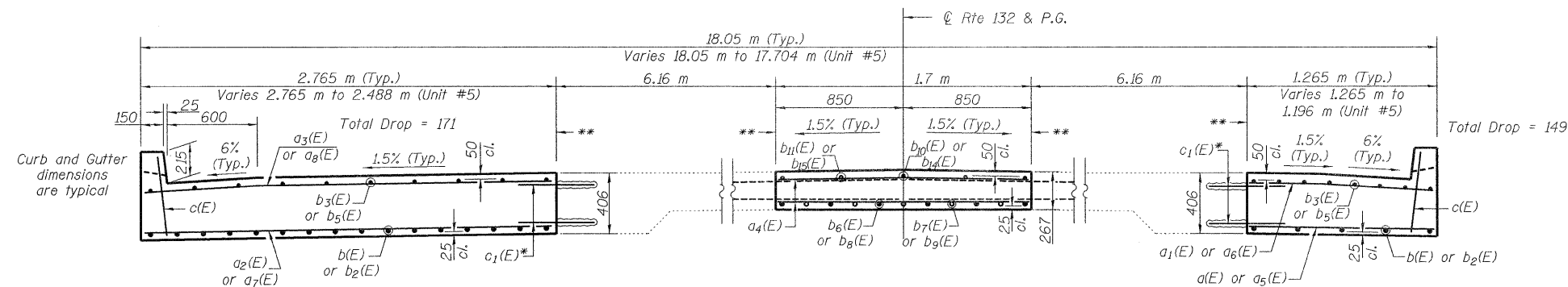


ROUTE NO.	SECTION	COUNTY	TOTAL SHEETS	SHEET NO.
F.A.P. 866	4N-1	LAKE	165	77
FED. ROAD DIST. NO. 7	ILLINOIS	FED. AID PROJECT-		

SHEET NO.
8 of 22

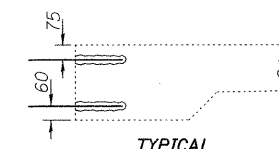
Contract No.: 60931



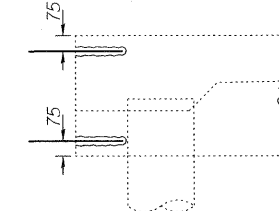
CROSS SECTION AT MIDSPAN
Looking East

* Drill and grout 300 mm deep into existing slab. See Section 584 of the Standard Specifications.

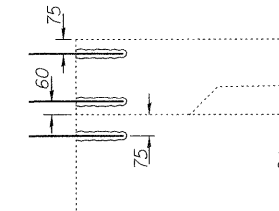
** Longitudinal Bonded Construction Joint In accordance with Article 503.09 (b) of the Standard Specifications



TYPICAL

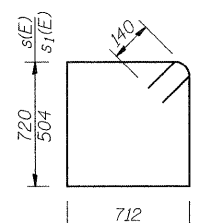


SMALL PIERS

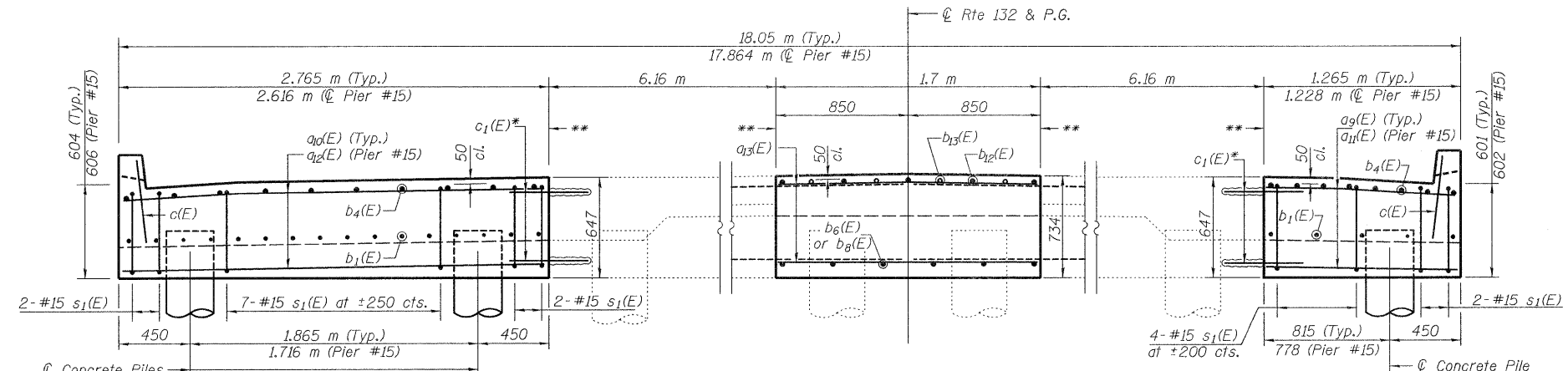


LARGE PIERS

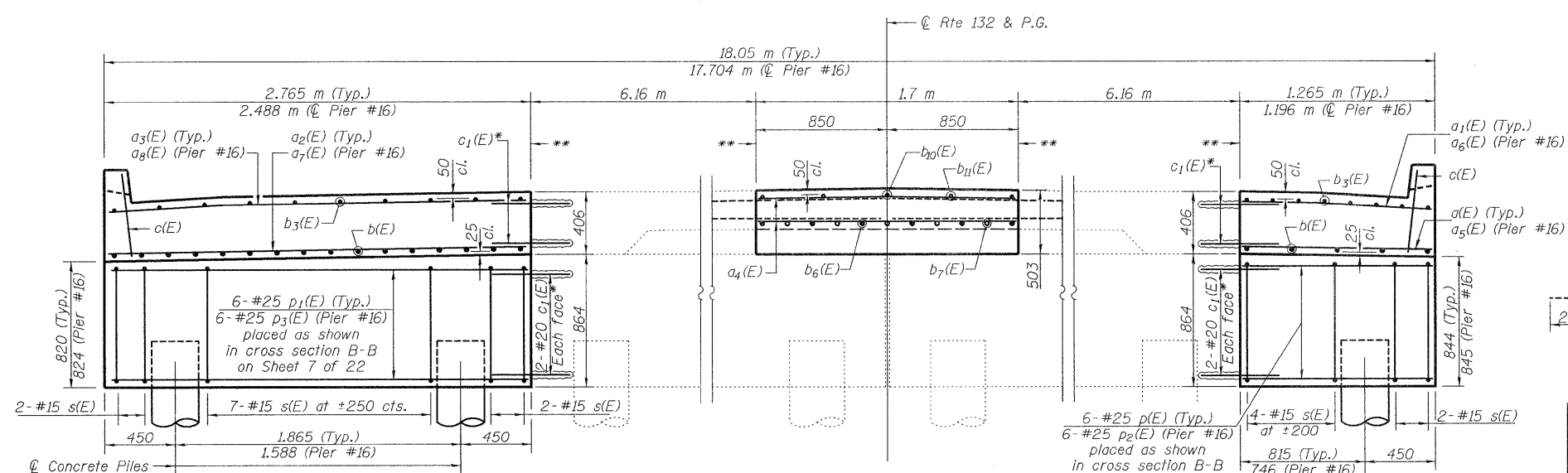
c₁(E) PLACEMENT LOCATIONS



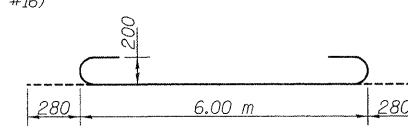
BAR s(E) & s₁(E)



CROSS SECTION AT PIERS 2, 3, 5, 6, 8, 9, 11, 12, 14 & 15
Looking East



CROSS SECTION AT PIERS 1, 4, 7, 10, 13 & 16
Looking East



BAR b₁₆(E)

SUPERSTRUCTURE BILL OF MATERIAL

Bar	No.	Size	Length (m)	Shape	
a ₁ (E)	215	#15	1.17	—	
a ₂ (E)	257	#10	1.17	—	
a ₃ (E)	215	#15	2.67	—	
a ₄ (E)	257	#10	2.67	—	
a ₅ (E)	575	#15	1.60	—	
a ₆ (E)	15	#15	1.12	—	
a ₇ (E)	16	#10	1.12	—	
a ₈ (E)	15	#15	2.51	—	
a ₉ (E)	16	#10	2.51	—	
a ₁₀ (E)	45	#25	1.17	—	
a ₁₁ (E)	45	#25	2.67	—	
a ₁₂ (E)	5	#25	1.13	—	
a ₁₃ (E)	5	#25	2.52	—	
a ₁₄ (E)	50	#25	1.60	—	
a ₁₅ (E)	23	#15	1.10	—	
b(E)	150	#30	5.07	—	
b ₁ (E)	150	#15	3.75	—	
b ₂ (E)	75	#30	5.55	—	
b ₃ (E)	260	#10	4.55	—	
b ₄ (E)	268	#25	4.25	—	
b ₅ (E)	130	#10	4.83	—	
b ₆ (E)	60	#30	6.65	—	
b ₇ (E)	50	#30	5.15	—	
b ₈ (E)	30	#30	8.53	—	
b ₉ (E)	25	#30	4.93	—	
b ₁₀ (E)	30	#15	4.29	—	
b ₁₁ (E)	20	#15	5.49	—	
b ₁₂ (E)	50	#30	5.30	—	
b ₁₃ (E)	40	#30	2.90	—	
b ₁₄ (E)	15	#15	4.01	—	
b ₁₅ (E)	10	#15	6.41	—	
b ₁₆ (E)	4	#15	0.90	—	
c ₁ (E)	474	#20	0.50	—	
c ₁ (E)	1532	#20	0.60	—	
p(E)	30	#25	1.17	—	
p ₁ (E)	30	#25	2.67	—	
p ₂ (E)	6	#25	1.10	—	
p ₃ (E)	6	#25	2.39	—	
s(E)	102	#15	3.15	□	
s ₁ (E)	170	#15	2.72	□	
Reinforcement Bars, Epoxy Coated				kg	30,840
Concrete Superstructure				Cu M	257.8

NOTES

- 65 mm Latex Concrete Overlay omitted for clarity. Profile Grade is located at the top of the overlay at the roadway centerline.
- Bend top transverse reinforcement located at the 6% gutter slope in field to maintain required clearance.
- See Section A-A on Sheet 11 of 22 for depressed curb dimensions.



REVISIONS	
NAME	DATE

ILLINOIS DEPARTMENT OF TRANSPORTATION
REINFORCEMENT DETAILS - III
 IL RTE. 132 LAND BRIDGE
 FAP RTE 866 - SEC 4N-1
 LAKE COUNTY
 STA. 1+143.3
 SN 049-D002
 DATE: 11-06-09
 DRAWN BY: BLB
 CHECKED BY: WJV