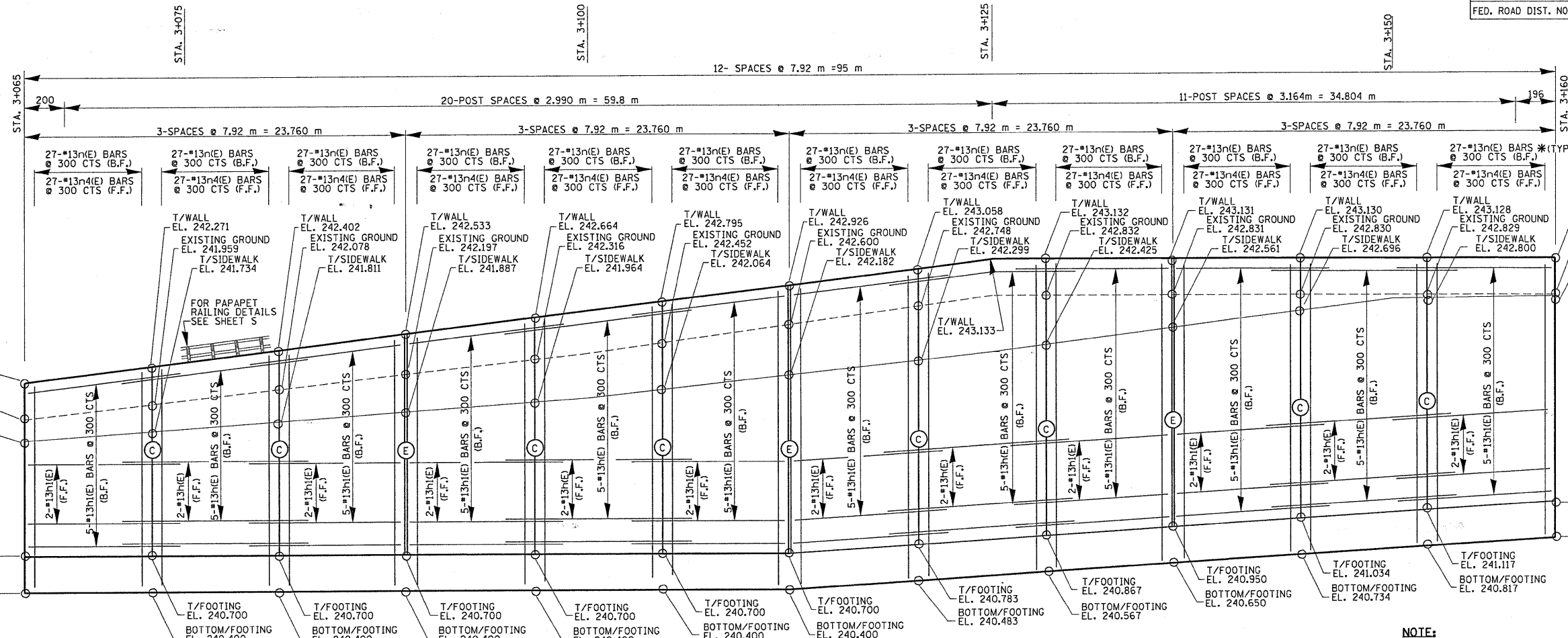
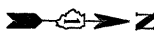
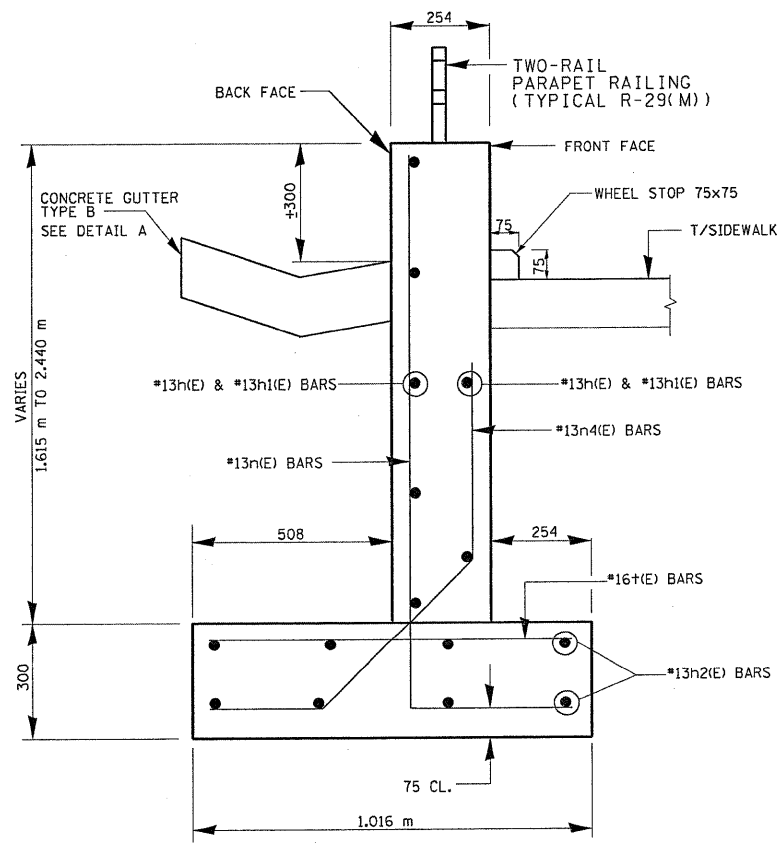


F.A.P. RTE.	SECTION	COUNTY	TOTAL SHEETS	SHEET NO.
866	4N-1	LAKE	165	95
STA. 3 + 065		TO STA. 3 + 160		
FED. ROAD DIST. NO.		ILLINOIS FED. AID PROJECT		

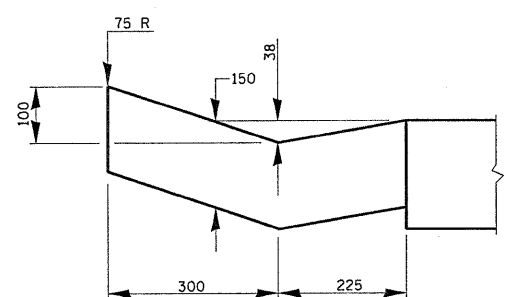


ELEVATION

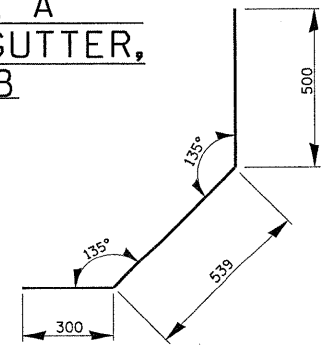
NOTE:
(*) FIELD CUT n(E) BARS TO SUIT WALL HEIGHT.



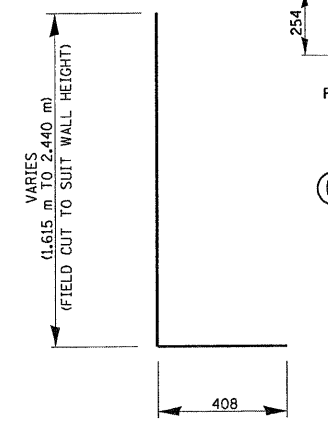
SECTION A-A



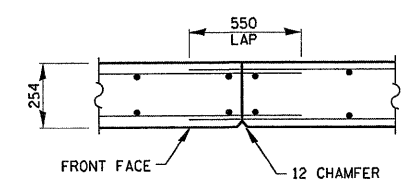
**DETAIL A
CONCRETE GUTTER,
TYPE B**



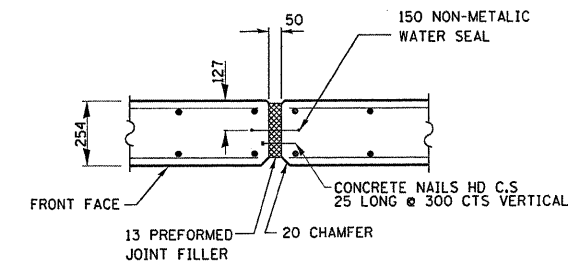
BAR n4(E)



BAR n(E)



(C) CONSTRUCTION JOINT DETAIL



(E) EXPANSION JOINT DETAIL

RETAINING WALL JOINT DETAILS

REVISIONS	
NAME	DATE

ILLINOIS DEPARTMENT OF TRANSPORTATION
IL 83 (MILWAUKEE AVENUE)
AT IL 132 (GRAND AVENUE)
FOUNDATION ELEVATION AND DETAILS
STA. 3+065- STA. 3+160
S.N. 049-W030

SCALE: NONE
DATE: AUGUST, 2003

DRAWN BY: MVT
CHECKED BY: R.S.S.