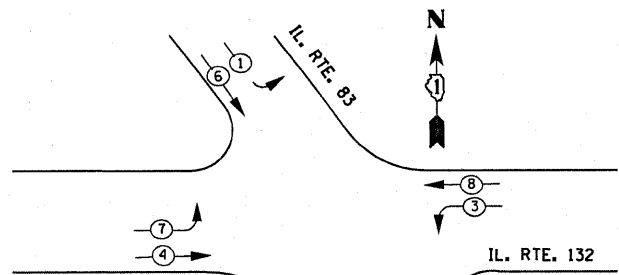
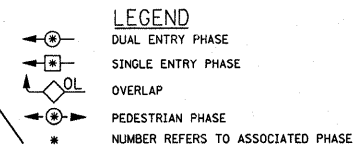


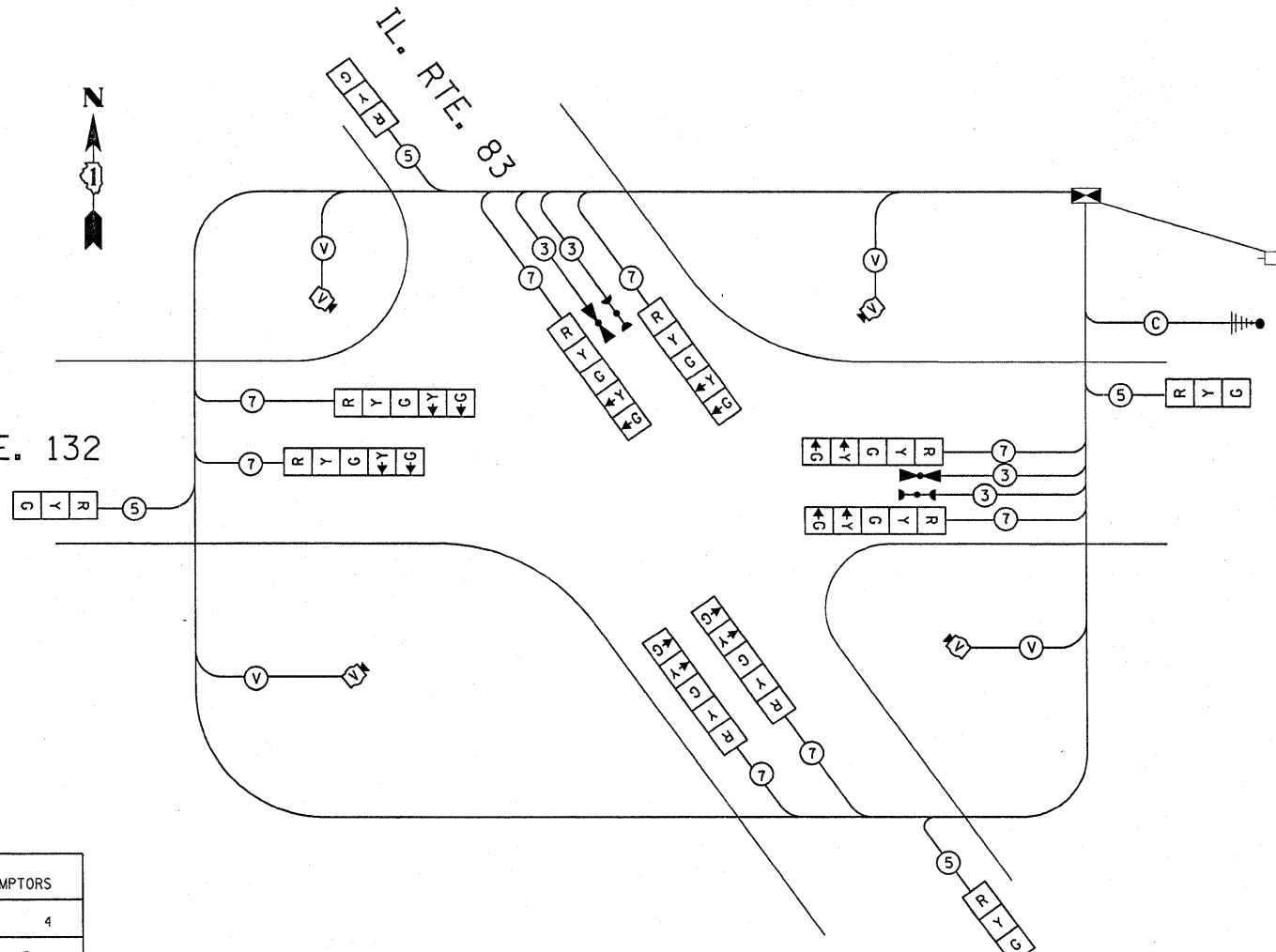
CONTROLLER SEQUENCE



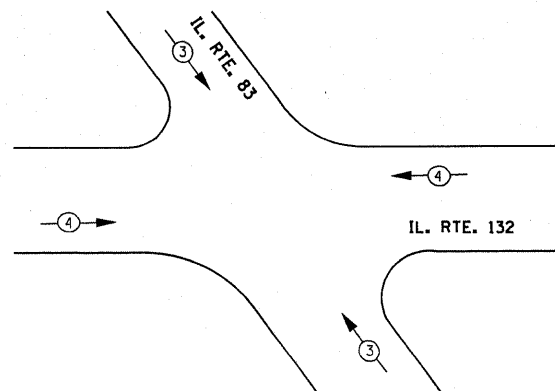
PROPOSED PHASE DESIGNATION DIAGRAM



IL. RTE. 132



TEMPORARY WIRELESS RADIO INTERCONNECT TO DEEP LAKE RD.



EMERGENCY VEHICLE PREEMPTION SEQUENCE

PROPOSED EMERGENCY VEHICLE PREEMPTORS		
EMERGENCY VEHICLE PREEMPTOR	3	4
MOVEMENT	↑	←

NOTE:
 THE TRAFFIC SIGNAL CONTROL EQUIPMENT FOR THIS PROJECT SHALL BE "EAGLE" TO MATCH THE EXISTING ADJACENT SYSTEM.

FILE NAME =	USER NAME = kanthaphixajbc	DESIGNED -	REVISED -
c:\pwwork\pwwork\kanthaphixajbc\d010887\FPI104498-TS.dgn		DRAWN -	REVISED -
PLOT SCALE = 6.820 m / IN.		CHECKED -	REVISED -
PLOT DATE = 10/30/2009		DATE -	REVISED -

STATE OF ILLINOIS
 DEPARTMENT OF TRANSPORTATION

SCHEDULE OF QUANTITIES, PHASE DESIGNATION DIAGRAM AND CABLE PLAN FOR STAGES 1 & 2 IL. RTE. 132 AT IL. RTE. 83

SCALE: 1:250 SHEET NO. OF SHEETS STA. TO STA.

F.A.P. RTE.	SECTION	COUNTY	TOTAL SHEETS	SHEET NO.
866	4N-1	LAKE	165	105
D-91-145-00			CONTRACT NO. 60931	
ILLINOIS FED. AID PROJECT				