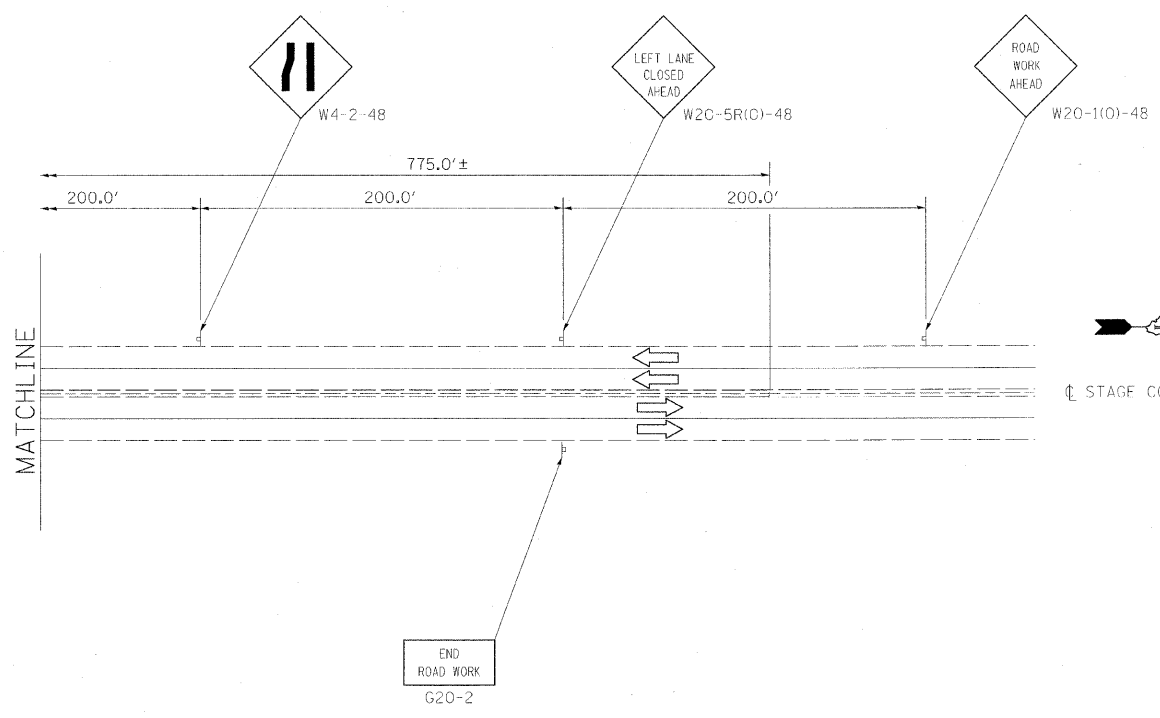


- PAVEMENT STRIPING LEGEND:**
- ① TYPE III BARRICADE TO BE PLACED WHEN NO WORK IS BEING PERFORMED
  - ② BARRIER WALL MARKER AT 25' CTS SEE STANDARD 704001 & 635011
  - ③ DRUMS AT 6' CENTERS IN TAPER
  - ④ TEMPORARY PAVEMENT MARKING, 4" WIDE SOLID WHITE

- SYMBOL LEGEND:**
- ↑ ARROW BOARD
  - ⊥ SIGN ON PORTABLE OR PREEMINENT SUPPORT
  - ▨ WORK AREA
  - ⊕ BARRICADE OR DRUM WITH FLASHING LIGHT
  - ⊗ TEMPORARY IMPACT ATTENUATOR
  - DRUM WITH STEADY BURNING LIGHT
  - TEMPORARY CONCRETE BARRIER
  - ◇ CRYSTAL BIDIRECTIONAL BARRIER WALL/GUARDRAIL MARKER

- NOTES:**
1. MAINTENANCE OF TRAFFIC DEVICES TO BE INSTALLED IN ACCORDANCE WITH APPLICABLE PORTIONS OF STANDARDS 701601 AND DISTRICT ONE STANDARDS TC-11 AND TC-24. ADDITIONAL SIGNAGE MAY BE REQUIRED BY THE RESIDENT ENGINEER. THIS WORK AND SIGNAGE IS INCLUDED IN THE PAYITEM FOR TRAFFIC CONTROL AND PROTECTION, (SPECIAL).
  2. TEMPORARY PAVEMENT MARKINGS WILL CONSIST OF WET REFLECTIVE TEMPORARY TAPE, TYPE III OF THE WIDTH AND COLOR SHOWN ON THE PLANS.
  3. EXISTING, CONFLICTING PAVEMENT MARKINGS SHALL BE REMOVED. THIS WORK SHALL BE PAID FOR AS PAVEMENT MARKING REMOVAL.
  4. REMOVAL OF THE TEMPORARY PAVEMENT MARKINGS SHALL BE INCLUDED IN COST OF WORK ZONE PAVEMENT MARKING REMOVAL.
  5. THE EXISTING PAVEMENT MARKINGS THAT HAVE BEEN REMOVED SHALL BE REPLACED IN-KIND. POLYUREA PAVEMENT MARKING, TYPE I WILL BE PLACED ON CONCRETE SURFACES. THERMOPLASTIC PAVEMENT MARKINGS WILL BE PLACED ON HMA SURFACES.



FILE NAME = D:\60J69\stg-staging.dgn	USER NAME = IDOT(eng)	DESIGNED - J.M. HAMELKA	REVISED -	<b>STATE OF ILLINOIS DEPARTMENT OF TRANSPORTATION</b>	<b>EAST RIVER ROAD AT I-90 KENNEDY EXPRESSWAY SUGGESTED TRAFFIC CONTROL AND STAGING PLAN - STAGE I</b>		F.A.U. RTE. 2729	SECTION 1617-I-1	COUNTY COOK	TOTAL SHEETS 13	SHEET NO. 3
	PLOT SCALE = 50.0000' / IN.	CHECKED - J.W. KOONCE	REVISED -		SCALE: 1"=50'	SHEET NO. 1 OF 2 SHEETS	STA. TO STA.	CONTRACT NO. 60J69 ILLINOIS FED. AID PROJECT			
PLOT DATE = 5/18/2010	DATE - JANUARY, 2010	REVISED -	REVISED -								