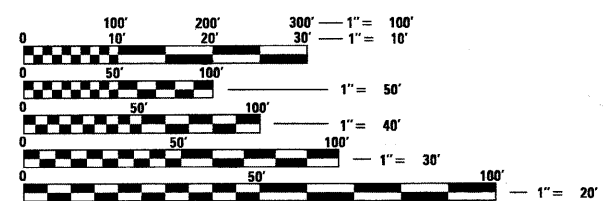


**INDEX OF SHEETS**

1. TITLE SHEET
2. GENERAL NOTES
3. SUMMARY OF QUANTITIES
- 4.-9. DISTRICT ONE STANDARD TRAFFIC SIGNAL DESIGN DETAILS
10. TEMPORARY TRAFFIC SIGNAL EQUIPMENT REMOVAL PLAN  
US ROUTE 6 (W. EAMES STREET) AT BELL ROAD
11. TRAFFIC SIGNAL INSTALLATION PLAN  
US ROUTE 6 (W. EAMES STREET) AT BELL ROAD
12. SCHEDULE OF QUANTITIES, CABLE PLAN, PHASE DESIGNATION DIAGRAM  
AND EMERGENCY VEHICLE PREMPTION  
US ROUTE 6 (W. EAMES STREET) AT BELL ROAD
13. MAST ARM MOUNTED STREET NAME SIGN  
13A. ARTERIAL ROAD INFORMATION SIGN

**IDOT STANDARDS:**

- 701106-03 OFF-ROAD OPERATIONS, 2L, 2W, 15' (4.5 m) TO 24" (600 mm) FROM PAVEMENT EDGE
- 701011-02 OFF-RD MOVING OPERATIONS, 2L, 2W, DAY ONLY
- 701101-02 OFF-ROAD OPERATIONS, MULTILANE, 15' (4.5 m) TO 24" (600 mm) FROM PAVEMENT EDGE
- 701301-03 LANE CLOSURE, 2L, 2W, SHORT TIME OPERATIONS
- 701421-02 LANE CLOSURE, MULTILANE, DAY OPERATIONS ONLY, FOR SPEEDS ≥ 45 MPH TO 55MPH
- 701901-01 TRAFFIC CONTROL DEVICES
- 720001-01 SIGN PANEL MOUNTING DETAILS
- 814001-02 HANDHOLES
- 814006-02 DOUBLE HANDHOLES
- 857001-01 STANDARD PHASE DESIGNATION DIAGRAMS AND PHASE SEQUENCES
- 877001-04 STEEL MAST ARM ASSEMBLY AND POLE 16' THROUGH 55'
- 878001-08 CONCRETE FOUNDATION DETAILS
- 880006-01 TRAFFIC SIGNAL MOUNTING DETAILS



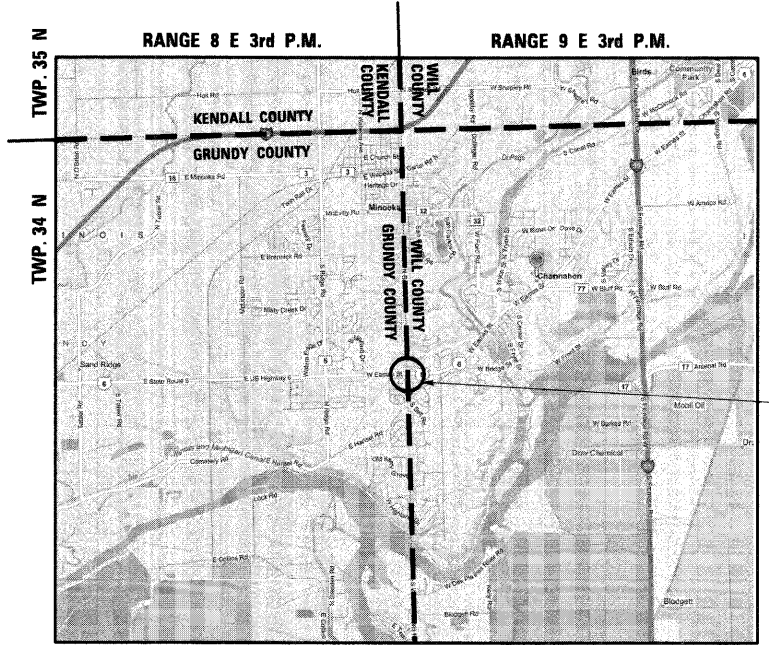
FULL SIZE PLANS HAVE BEEN PREPARED USING STANDARD ENGINEERING SCALES. REDUCED SIZED PLANS WILL NOT CONFORM TO STANDARD SCALES. IN MAKING MEASUREMENTS ON REDUCED PLANS, THE ABOVE SCALES MAY BE USED.

J.U.L.I.E.  
JOINT UTILITY LOCATION INFORMATION FOR EXCAVATION  
1-800-892-0123  
OR 811

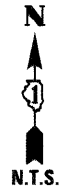
**PROJECT ENGINEER: AMIR CUBIC**  
**PROJECT MANAGER: DARYLE DREW**

**CONTRACT NO. 60J90**

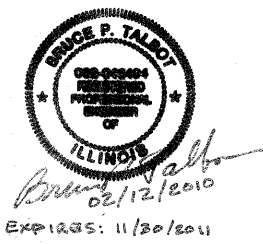
**STATE OF ILLINOIS**  
**DEPARTMENT OF TRANSPORTATION**  
**DIVISION OF HIGHWAYS**  
**PLANS FOR PROPOSED**  
**FEDERAL AID HIGHWAY**  
**DISTRICT 1**  
**TRAFFIC SIGNAL MODERNIZATION**  
**US ROUTE 6 @ BELL ROAD**  
**F.A.U. ROUTE 392 /US ROUTE 6**  
**WILL COUNTY**  
**SECTION 2009-130 TS**  
**C-91-298-10**



LOCATION MAP



**US ROUTE 6 (W. EAMES STREET)  
@  
BELL ROAD**

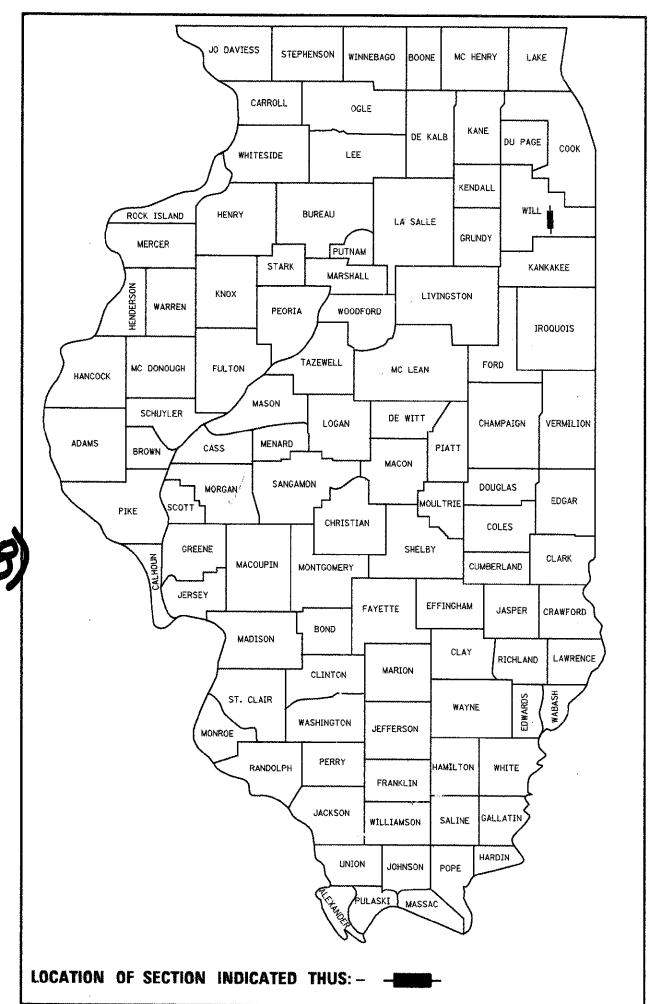


EXPIRES: 11/30/2011

PREPARED BY:  
**CEMCON, Ltd.**  
Consulting Engineers, Land Surveyors & Planners  
2280 White Oak Circle, Suite 100  
Aurora, Illinois 60504-9675  
Ph: 630.862.2100 Fax: 630.862.2199  
E-Mail: cadd@cemcon.com Website: www.cemcon.com

F.A.U. RTE.	SECTION	COUNTY	TOTAL SHEETS	SHEET NO.
392	2009-130 TS	WILL	13*	1
		ILLINOIS	CONTRACT NO. 60J90	

\* 13 + 1 = 14



LOCATION OF SECTION INDICATED THUS: - [black rectangle] -

**STATE OF ILLINOIS**  
**DEPARTMENT OF TRANSPORTATION**  
**DIVISION OF HIGHWAYS**

SUBMITTED April 20 10  
Darin M. O'Keefe  
DEPUTY DIRECTOR OF HIGHWAYS, REGION ENGINEER

June 05 2010  
Scott E. Stitt, P.E./e  
ENGINEER OF DESIGN AND ENVIRONMENT

June 05 2010  
Christine M. Reed  
DIRECTOR OF HIGHWAYS, CHIEF ENGINEER

**PRINTED BY THE AUTHORITY  
OF THE STATE OF ILLINOIS**