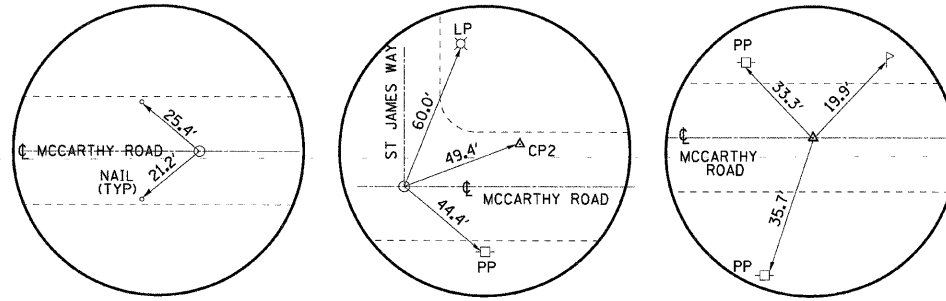


# BENCHMARKS

- CP #1 - ELEV=720.21      MAG NAIL SET IN BITUM.
- CP #2 - ELEV=718.44      MAG NAIL SET IN BITUM.
- CP #3 - ELEV=705.53      MAG NAIL SET IN BITUM.
- CP #4 - ELEV=715.944    MAG NAIL SET IN BITUM.

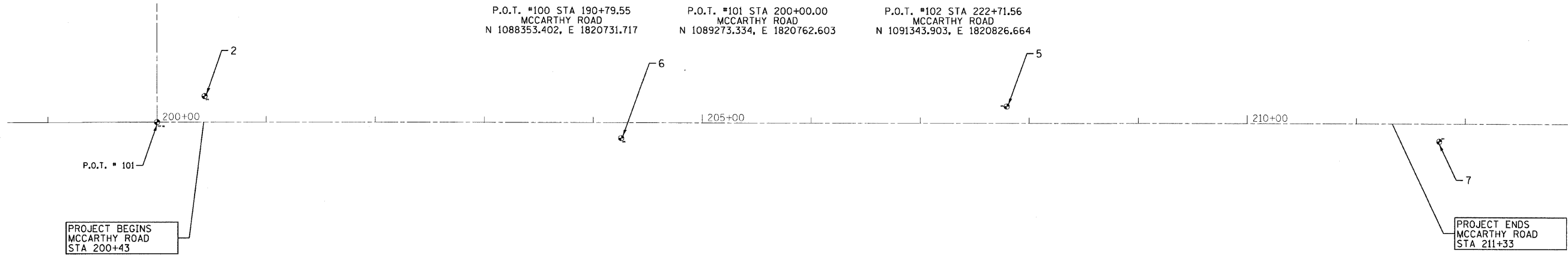
# HORIZONTAL & VERTICAL CONTROL



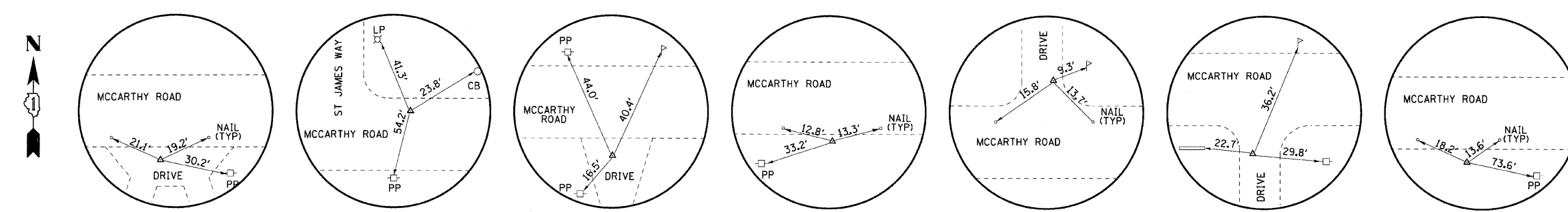
P.O.T. #100 STA 190+79.55  
MCCARTHY ROAD  
N 1088353.402, E 1820731.717

P.O.T. #101 STA 200+00.00  
MCCARTHY ROAD  
N 1089273.334, E 1820762.603

P.O.T. #102 STA 222+71.56  
MCCARTHY ROAD  
N 1091343.903, E 1820826.664



## MCCARTHY ROAD



CP #1 STA 196+47.50  
MCCARTHY ROAD  
N 1088921.704, E 1820730.869

CP #2 STA 200+43.55  
MCCARTHY ROAD  
N 1089316.129, E 1820787.541

CP #3 STA 220+54.86  
MCCARTHY ROAD  
N 1091327.683, E 1820810.858

CP #4 STA 216+64.47  
MCCARTHY ROAD  
N 1090937.493, E 1820798.401

CP #5 STA 207+79.51  
MCCARTHY ROAD  
N 1090051.998, E 1820801.956

CP #6 STA 204+25.65  
MCCARTHY ROAD  
N 1089699.220, E 1820761.458

CP #7 STA 211+76.08  
MCCARTHY ROAD  
N 1090449.348, E 1820782.905

## TIE-POINTS

COPYRIGHT © 2010 BY BAYTER & WOODMAN, INC.  
 STATE OF ILLINOIS - PROFESSIONAL DESIGN FIRM  
 LICENSE NO. 184-00101 - EXPIRES 4/30/2011  
 3:amp;rsquo;s VULNERABILITY WORKSHEET SURVEY/CONTROL/POINTS/ALIGNMENT.sht  
 04/26/10 09:29:51 AM



DESIGNED - CAC	REVISED - PER IDOT 5-19-10
DRAWN - BCD	REVISED -
CHECKED - TMS	REVISED -
DATE - 04/26/10	FILE - 100153-Alignment.sht

STATE OF ILLINOIS  
DEPARTMENT OF TRANSPORTATION

### ALIGNMENT PLAN

SCALE: 1"=50'

STA. TO STA.

F.A. RTE.	SECTION	COUNTY	TOTAL SHEETS	SHEET NO.
1587	3098-T	COOK	17	5
CONTRACT NO. 60K75				
FED. ROAD DIST. NO. ILLINOIS FED. AID PROJECT				