

F.A. RTE.	SECTION	COUNTY	TOTAL SHEETS	SHEET NO.
1587	3098-T	COOK	17	1
FED. ROAD DIST NO.	ILLINOIS	CONTRACT NO. 60K75		

STATE OF ILLINOIS
DEPARTMENT OF TRANSPORTATION
DIVISION OF HIGHWAYS

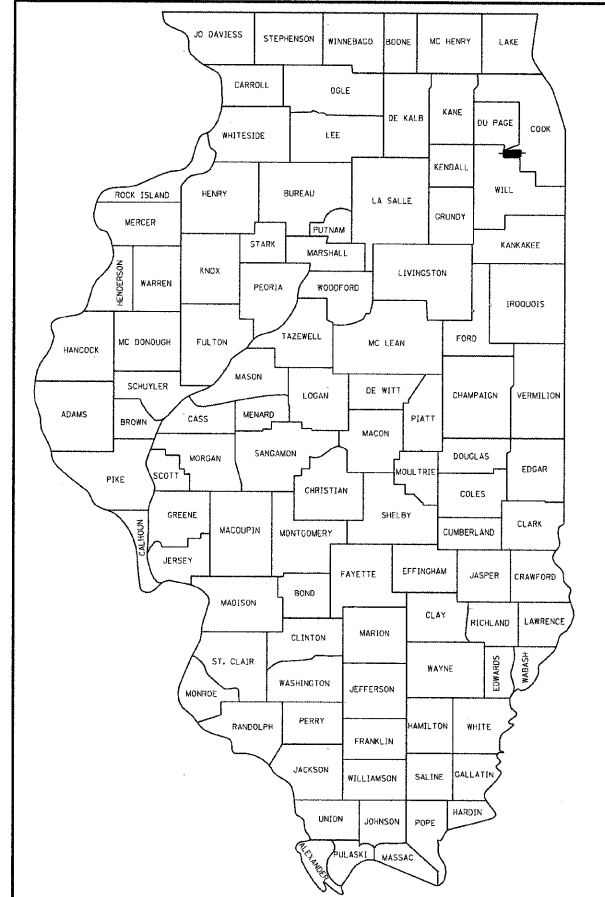
**PROPOSED
HIGHWAY PLANS**

FAU 1587 MCCARTHY ROAD
ST JAMES WAY TO 1150' WEST
SECTION: 3098-T
DRAINAGE IMPROVEMENT
COOK COUNTY
C-91-588-10

FOR INDEX OF SHEETS, SEE SHEET NO. 2

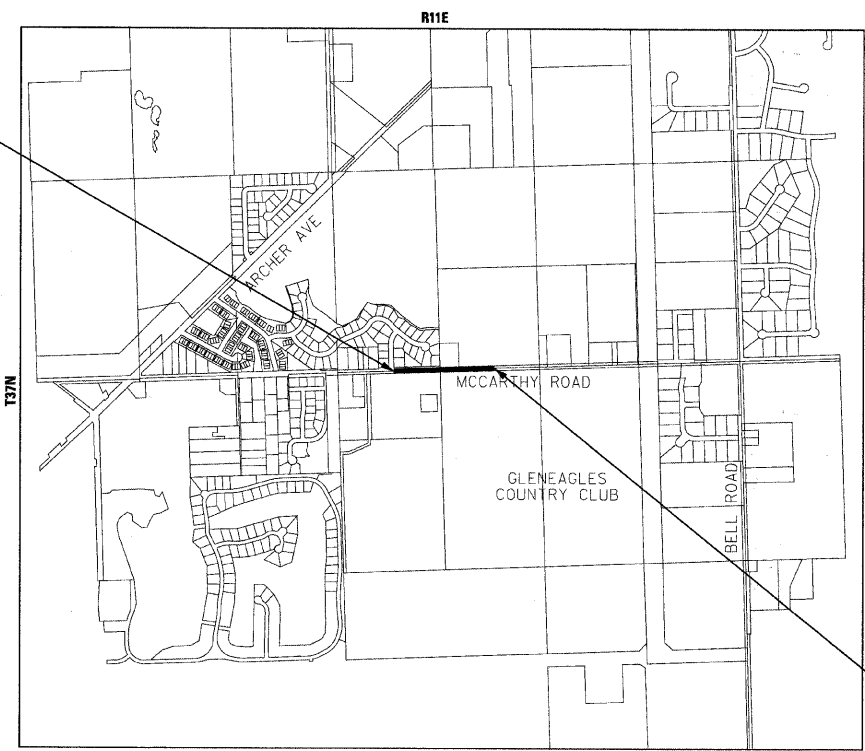
THE IMPROVEMENT IS LOCATED IN THE VILLAGE OF LEMONT

C-91-588-10



LOCATION OF SECTION INDICATED THIS: - [black rectangle] -

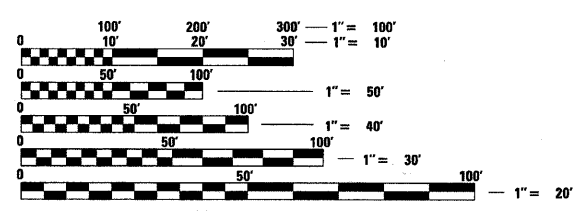
IMPROVEMENT BEGINS
STA 200+43



IMPROVEMENT ENDS
STA 211+33

DESIGN DESIGNATION
MINOR ARTERIAL

TRAFFIC DATA
2009 ADT = 8,800 VPD
POSTED SPEED LIMIT = 50 MPH



FULL SIZE PLANS HAVE BEEN PREPARED USING STANDARD ENGINEERING SCALES. REDUCED SIZED PLANS WILL NOT CONFORM TO STANDARD SCALES. IN MAKING MEASUREMENTS ON REDUCED PLANS, THE ABOVE SCALES MAY BE USED.

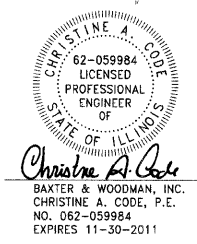
J.U.L.I.E.
JOINT UTILITY LOCATION INFORMATION FOR EXCAVATION
1-800-892-0123
OR 811

PROJECT ENGINEER: TOM SLATTERY
PROJECT MANAGER: KEN ENG (847) 705-4247

CONTRACT NO. 60K75

SCALE: N.T.S.
LEMONT TOWNSHIP

GROSS LENGTH & NET LENGTH OF PROJECT = 1090 LINEAL FT. = 0.21 MILE



BAXTER & WOODMAN, INC.
8840 W. 192ND STREET
MOKENA, IL 60448
(708) 478-2090
STATE OF ILLINOIS - PROFESSIONAL DESIGN FIRM
LICENSE NO. - 184-001121 - EXPIRES 4/30/2011

PRINTED BY THE AUTHORITY
OF THE STATE OF ILLINOIS

COPYRIGHT © 2010 BY BAXTER & WOODMAN, INC.
 LICENSE NO. 184-001121 EXPIRES 4/30/2011
 5/24/2010 8:39:23 AM
 I:\mokena\184\10053_wot\cadd-sur\sy\dr\dwg\10053\10053-Cover.sht

SUMMARY OF QUANTITIES			1001 STATE URBAN CONSTRUCTION TYPE CODE	
CODE NO	ITEM	UNIT	TOTAL QUANTITIES	Y007
				DRAINAGE QUANTITY
20100110	TREE REMOVAL (6 TO 15 UNITS DIAMETER)	UNIT	72	72
20200100	EARTH EXCAVATION	CU YD	267	267
20201200	REMOVAL AND DISPOSAL OF UNSUITABLE MATERIAL	CU YD	389	389
20800150	TRENCH BACKFILL	CU YD	76	76
21101615	TOPSOIL FURNISH AND PLACE, 4"	SO YD	3997	3997
25000210	SEEDING, CLASS 2A	ACRE	0.8	0.8
25000400	NITROGEN FERTILIZER NUTRIENT	POUND	72	72
25000500	PHOSPHORUS FERTILIZER NUTRIENT	POUND	72	72
25000600	POTASSIUM FERTILIZER NUTRIENT	POUND	72	72
25100630	EROSION CONTROL BLANKET	SO YD	3997	3997
28000250	TEMPORARY EROSION CONTROL SEEDING	POUND	80	80
28000305	TEMPORARY DITCH CHECKS	FOOT	48	48
28000400	PERIMETER EROSION BARRIER	FOOT	382	382
28000500	INLET AND PIPE PROTECTION	EACH	2	2
28000510	INLET FILTERS	EACH	6	6
28100105	STONE RIPRAP, CLASS A3	SO YD	15	15
28200200	FILTER FABRIC	SO YD	15	15
35102000	AGGREGATE BASE COURSE, TYPE B 8"	SO YD	65	65
35501308	HOT-MIX ASPHALT BASE COURSE, 6"	SO YD	65	65
40600100	BITUMINOUS MATERIALS (PRIME COAT)	GALLON	5	5
40600300	AGGREGATE (PRIME COAT)	TON	0.1	0.1
40603310	HOT-MIX ASPHALT SURFACE COURSE, MIX "C," N50	TON	15	15
44201833	CLASS D PATCHES, TYPE IV, 15 INCH	SO YD	48	48
50104400	CONCRETE HEADWALL REMOVAL	EACH	4	4
50105220	PIPE CULVERT REMOVAL	FOOT	180	180
542A0220	PIPE CULVERTS, CLASS A, TYPE 1 15"	FOOT	42	42
542A1069	PIPE CULVERTS, CLASS A, TYPE 2 24"	FOOT	55	55
54213663	PRECAST REINFORCED CONCRETE FLARED END SECTIONS 18"	EACH	1	1
54215415	CAST-IN-PLACE REINFORCED CONCRETE END SECTIONS 15"	EACH	2	2
54215424	CAST-IN-PLACE REINFORCED CONCRETE END SECTIONS 24"	EACH	2	2
550A0380	STORM SEWERS, CLASS A, TYPE 2 18"	FOOT	859	859
55037900	STORM SEWERS TO BE CLEANED 15"	FOOT	248	248
60219000	MANHOLES, TYPE A, 4'-DIAMETER, TYPE B GRATE	EACH	2	2
67000400	ENGINEER'S FIELD OFFICE, TYPE A	CAL MO	6	6
67100100	MOBILIZATION	L SUM	1	1
70102620	TRAFFIC CONTROL PROTECTION - STANDARD 701501	L SUM	1	1
70102630	TRAFFIC CONTROL PROTECTION - STANDARD 701601	L SUM	1	1
78000200	THERMOPLASTIC PAVEMENT MARKING - LINE 4"	FOOT	120	120
Z0013798	CONSTRUCTION LAYOUT	L SUM	1	1
Z0018500	DRAINAGE STRUCTURES TO BE CLEANED	EACH	3	3
Z0030850	TEMPORARY INFORMATION SIGNING	SO FT	52	52
Z003202	SEDIMENT CONTROL, DRAINAGE STRUCTURE INLET FILTER CLEANING	EACH	6	6
Z003206	SEDIMENT CONTROL, SILT FENCE MAINTENANCE	FOOT	382	382

• SPECIALTY ITEMS

EARTHWORK

STATION	SQUARE FEET BY STATION			VOLUMES, IN CUBIC YARDS			REMOVAL AND DISPOSAL OF UNSUITABLE MATERIAL (CU YD)	EARTH EXCAVATION TO BE USED IN EMBANKMENT	BALANCE WASTE (+) SHORTAGE (-)
	TOPSOIL EXCAVATION (SQ FT)	EARTH EXCAVATION (SQ FT)	EMBANKMENT (SQ FT)	TOPSOIL EXCAVATION (CU YD)	EARTH EXCAVATION (CU YD)	EMBANKMENT (CU YD)			
200+43.00	5.0	0.0	0.2						
201+00.00	8.2	0.2	3.3	14.0	1.0	4.0	14.0	0.9	-3.2
202+00.00	7.3	11.7	0.1	29.0	23.0	7.0	29.0	19.6	12.6
203+00.00	9.0	14.8	0.1	31.0	50.0	1.0	31.0	42.5	41.5
203+90.00	9.0	14.8	0.1	30.0	50.0	1.0	30.0	42.5	41.5
204+00.00	22.0	122.8	55.8	6.0	26.0	11.0	6.0	22.1	11.1
204+10.00	10.0	3.9	3.6	6.0	24.0	11.0	6.0	20.4	9.4
205+00.00	10.0	3.9	3.6	34.0	13.0	12.0	34.0	11.1	-1.0
206+00.00	11.0	3.6	0.2	39.0	14.0	8.0	39.0	11.9	3.9
207+00.00	9.5	5.7	0.3	38.0	18.0	1.0	38.0	15.3	14.3
208+00.00	9.8	8.5	0.6	36.0	27.0	2.0	36.0	23.0	21.0
209+00.00	9.5	6.7	0.2	36.0	29.0	2.0	36.0	24.7	22.7
210+00.00	9.5	11.5	0.2	36.0	34.0	1.0	36.0	28.9	27.9
210+00.00	9.5	11.5	0.2	0.0	0.0	0.0	0.0	0.0	0.0
211+00.00	10.0	12.0	1.0	37.0	44.0	3.0	37.0	37.4	34.4
211+11.00	27.0	313.7	187.9	8.0	67.0	39.0	8.0	57.0	18.0
211+20.00	6.0	2.0	2.0	6.0	53.0	32.0	6.0	45.1	13.1
211+33.00	6.0	0.0	0.0	3.0	1.0	1.0	3.0	0.9	-0.2
TOTALS:				389.0	474.0	136.0	389.0	402.9	266.9

SHRINKAGE FACTOR = 15%

NOTES:
15% SHRINKAGE FACTOR WAS USED
ASSUMED 6" TOPSOIL EXCAVATION
PAVEMENT REMOVAL AREA IS INCLUDED AS EARTH EXCAVATION

COPYRIGHT © 2006 BY BAXTER & WOODMAN, INC.
 ALL RIGHTS RESERVED. ILLINOIS PROFESSIONAL ENGINEERING LICENSE NO. 184-001217. EXPIRES 4/30/2010.
 488cc
 5/26/2006 BJA/MS/AM



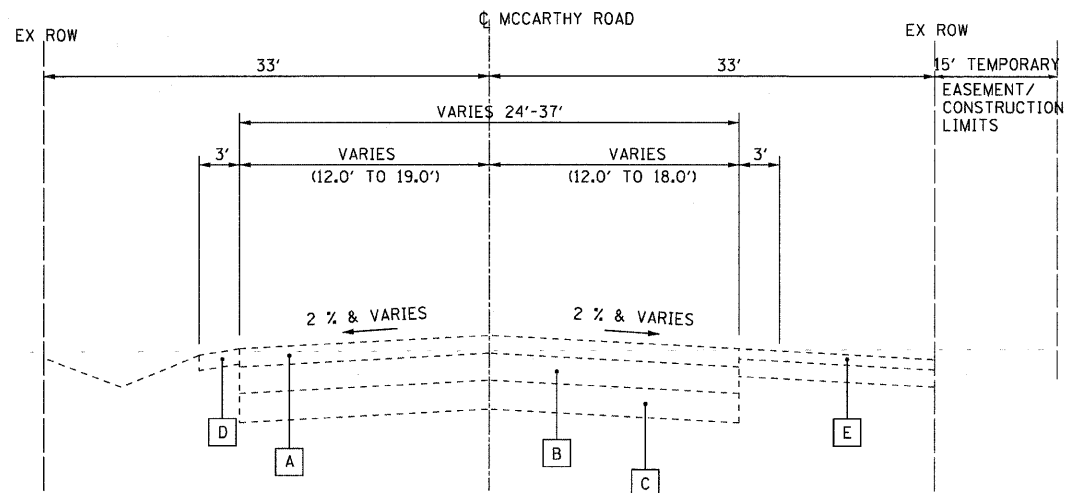
DESIGNED - CAC	REVISED - PER IDOT 5-19-10
DRAWN - BCD	REVISED -
CHECKED - TMS	REVISED -
DATE - 04/26/10	FILE - 100153-S00.sht

STATE OF ILLINOIS
DEPARTMENT OF TRANSPORTATION

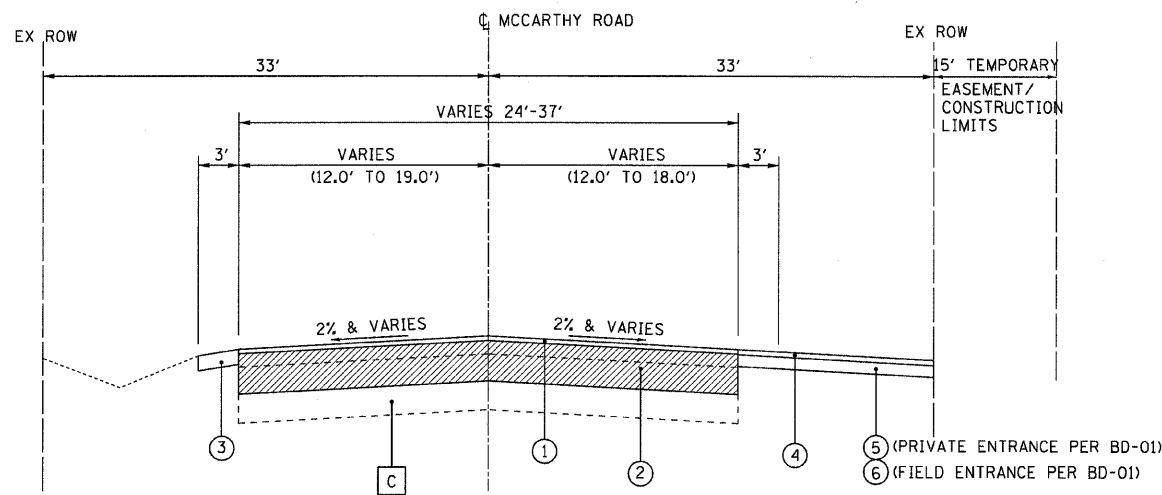
SUMMARY OF QUANTITIES

SCALE: NONE STA. TO STA.

F.A. RTE. 1587	SECTION 3098-T	COUNTY COOK	TOTAL SHEETS 17	SHEET NO. 3
FED. ROAD DIST. NO. ILLINOIS FED. AID PROJECT		CONTRACT NO. 60K75		



**EXISTING TYPICAL SECTION
MCCARTHY ROAD**
STA 200+43 TO STA 211+33



**PROPOSED TYPICAL SECTION
MCCARTHY ROAD**
STA 200+43 TO STA 211+33

EXISTING LEGEND

- A HOT-MIX ASPHALT PAVEMENT, (AVG. DEPTH 5")
- B PCC BASE COURSE, (10" & VARIES)
- C AGGREGATE BASE COURSE, (VARIES 6"-11")
- D AGGREGATE SHOULDERS, VARIABLE DEPTH
- E EXISTING DRIVEWAY

PROPOSED LEGEND

- ① HOT-MIX ASPHALT SURFACE COURSE, MIX "D", N50 - 2" (INCLUDED IN THE COST OF THE CLASS D PATCH)
- ② CLASS D PATCHES, TYPE IV, 15 INCH (PLACED IN 4 LIFTS)
- ③ AGGREGATE SHOULDERS, TYPE B-6" (INCLUDED IN THE COST OF THE CLASS D PATCH)
- ④ HMA SURFACE COURSE, MIX "C", N50-2"
- ⑤ HMA BASE COURSE, 6" (PLACED IN 2 LIFTS)
- ⑥ AGGREGATE BASE COURSE, TYPE B, 8"

HOT-MIX ASPHALT MIXTURE REQUIREMENTS

ITEM	AIR VOIDS @ Ndes
PATCHING	
HOT-MIX ASPHALT SURFACE COURSE, MIX "D", N50 (IL 9.5 mm) - 2"	4% @ 50 Gyr
CLASS D PATCHES, TYPE IV, (HMA BINDER IL-19mm)	4% @ 70 Gyr
DRIVEWAYS	
HOT-MIX ASPHALT SURFACE COURSE, MIX "C", N50 (IL 9.5 mm) - 2"	4% @ 50 Gyr
HOT-MIX ASPHALT BASE COURSE (HMA BINDER IL 19mm) N50: PE - 6"	4% @ 50 Gyr

1. THE UNIT WEIGHT USED TO CALCULATE ALL HOT-MIX ASPHALT SURFACES MIXTURE IS 112 LBS/SQ YD/IN.
2. THE "AC TYPE" FOR POLYMERIZED HMA MIXES SHALL BE "SBS/SBR PG 70-22 AND FOR NON-POLYMERIZED HMA THE "AC TYPE" SHALL BE "PG 64-22" UNLESS MODIFIED BY DISTRICT ONE SPECIAL PROVISIONS." FOR "PERCENT OF RAP" SEE DISTRICT ONE SPECIAL PROVISIONS.

COPYRIGHT © 2003 BY BAXTER & WOODMAN, INC.
 STATE OF ILLINOIS - PROFESSIONAL DESIGN FIRM
 LICENSE NO. - BA 000271 - EXPIRES 4/30/2010
 4855503 TM
 3/22/2010



DESIGNED - CAC	REVISED - PER IDOT 5-19-10
DRAWN - BCD	REVISED -
CHECKED - TMS	REVISED -
DATE - 04/26/10	FILE - 100153-TypSec.shf

**STATE OF ILLINOIS
DEPARTMENT OF TRANSPORTATION**

TYPICAL SECTIONS

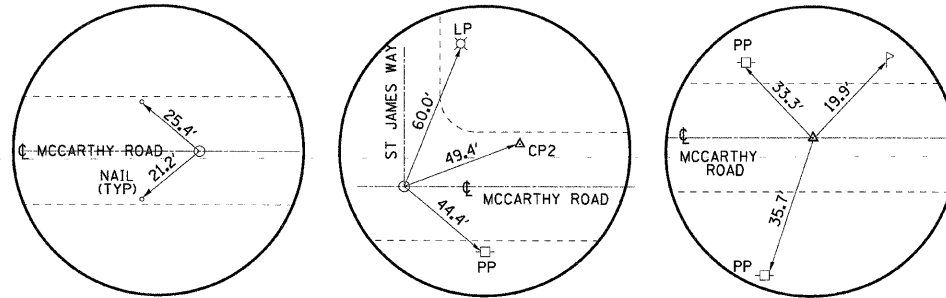
SCALE: NONE STA. TO STA.

F.A. RTE.	SECTION	COUNTY	TOTAL SHEETS	SHEET NO.
1587	3098-T	COOK	17	4
CONTRACT NO. 60K75				
FED. ROAD DIST. NO. ILLINOIS FED. AID PROJECT				

BENCHMARKS

- CP #1 - ELEV=720.21 MAG NAIL SET IN BITUM.
- CP #2 - ELEV=718.44 MAG NAIL SET IN BITUM.
- CP #3 - ELEV=705.53 MAG NAIL SET IN BITUM.
- CP #4 - ELEV=715.944 MAG NAIL SET IN BITUM.

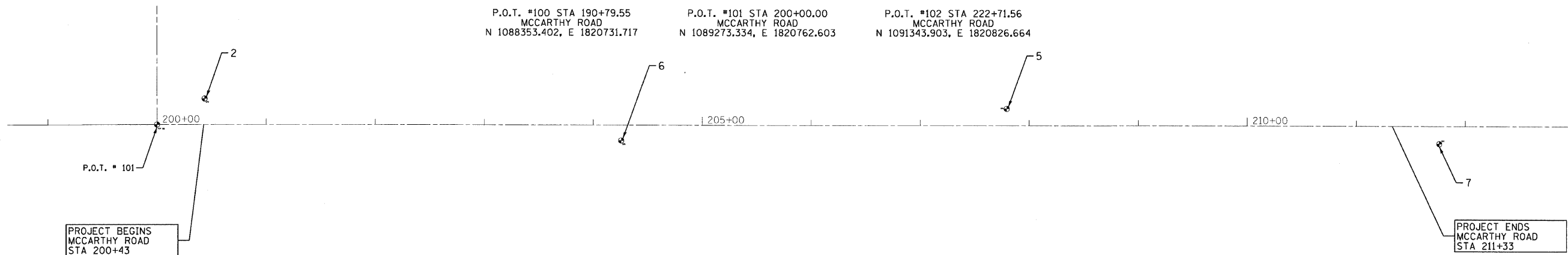
HORIZONTAL & VERTICAL CONTROL



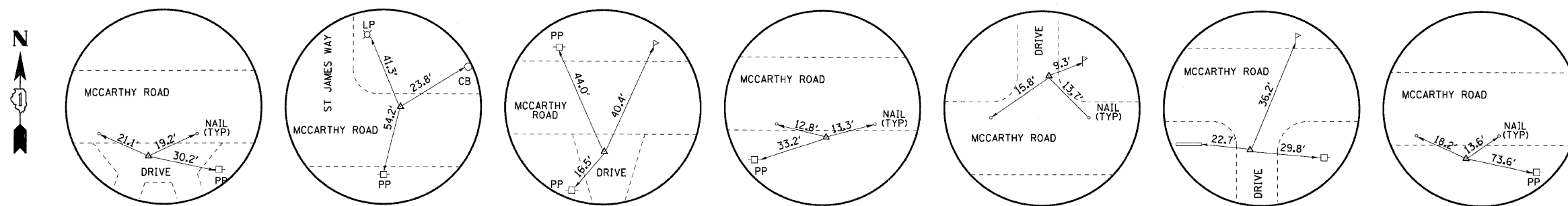
P.O.T. #100 STA 190+79.55
MCCARTHY ROAD
N 1088353.402, E 1820731.717

P.O.T. #101 STA 200+00.00
MCCARTHY ROAD
N 1089273.334, E 1820762.603

P.O.T. #102 STA 222+71.56
MCCARTHY ROAD
N 1091343.903, E 1820826.664



MCCARTHY ROAD



CP #1 STA 196+47.50
MCCARTHY ROAD
N 1088921.704, E 1820730.869

CP #2 STA 200+43.55
MCCARTHY ROAD
N 1089316.129, E 1820787.541

CP #3 STA 220+54.86
MCCARTHY ROAD
N 1091327.683, E 1820810.858

CP #4 STA 216+64.47
MCCARTHY ROAD
N 1090937.493, E 1820798.401

CP #5 STA 207+79.51
MCCARTHY ROAD
N 1090051.998, E 1820801.956

CP #6 STA 204+25.65
MCCARTHY ROAD
N 1089699.220, E 1820761.458

CP #7 STA 211+76.08
MCCARTHY ROAD
N 1090449.348, E 1820782.905

TIE-POINTS

COPYRIGHT © 2010 BY BAYTER & WOODMAN, INC.
 STATE OF ILLINOIS - PROFESSIONAL DESIGN FIRM
 LICENSE NO. 184-00101 - EXPIRES 4/30/2011
 3:22:20 PM 04/26/10 63295 AI



DESIGNED - CAC	REVISED - PER IDOT 5-19-10
DRAWN - BCD	REVISED -
CHECKED - TMS	REVISED -
DATE - 04/26/10	FILE - 100153-Alignment.sht

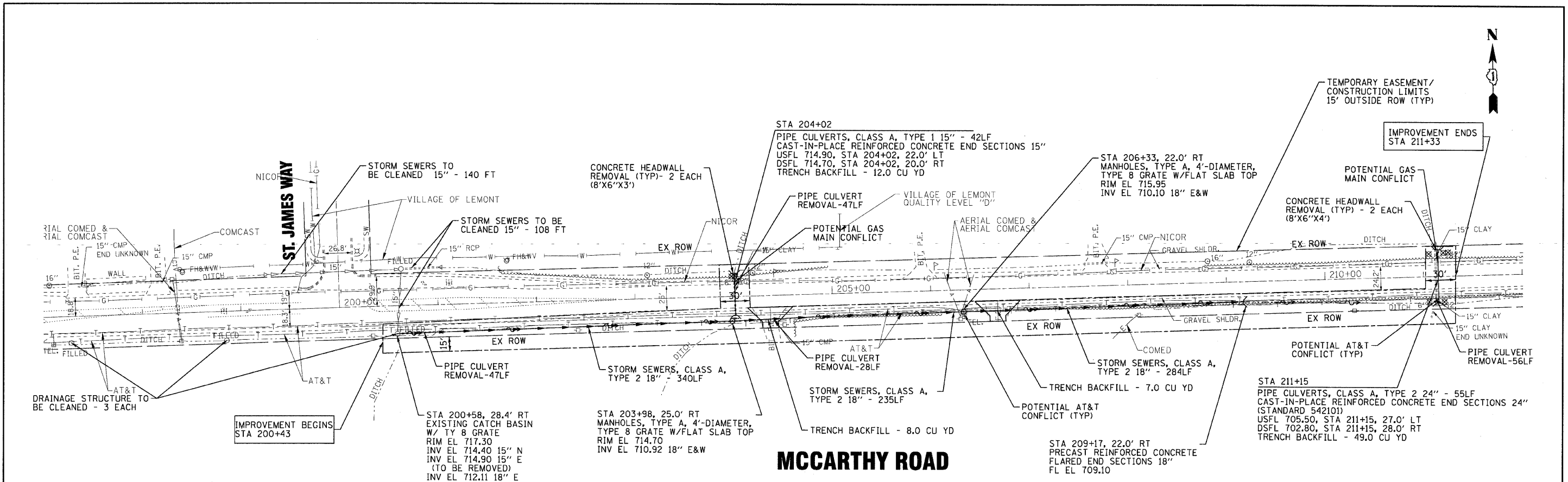
STATE OF ILLINOIS
DEPARTMENT OF TRANSPORTATION

ALIGNMENT PLAN

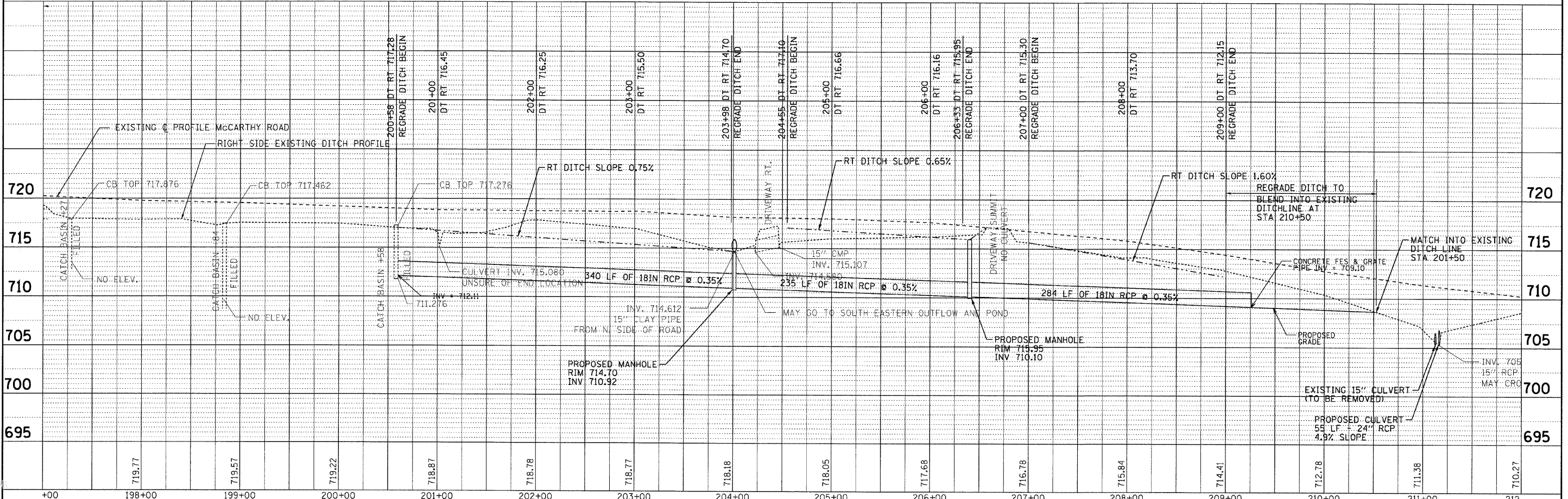
SCALE: 1"=50'

STA. TO STA.

F.A. RTE.	SECTION	COUNTY	TOTAL SHEETS	SHEET NO.
1587	3098-T	COOK	17	5
CONTRACT NO. 60K75				
FED. ROAD DIST. NO. ILLINOIS FED. AID PROJECT				



MCCARTHY ROAD



COPYRIGHT © 2008 BY BAXTER & WOODMAN, INC.
 STATE OF ILLINOIS - PROFESSIONAL DESIGN FIRM
 LICENSE NO. - BR-00127 - EXPIRES 4/30/2011
 5/26/2008 9:50:00 AM



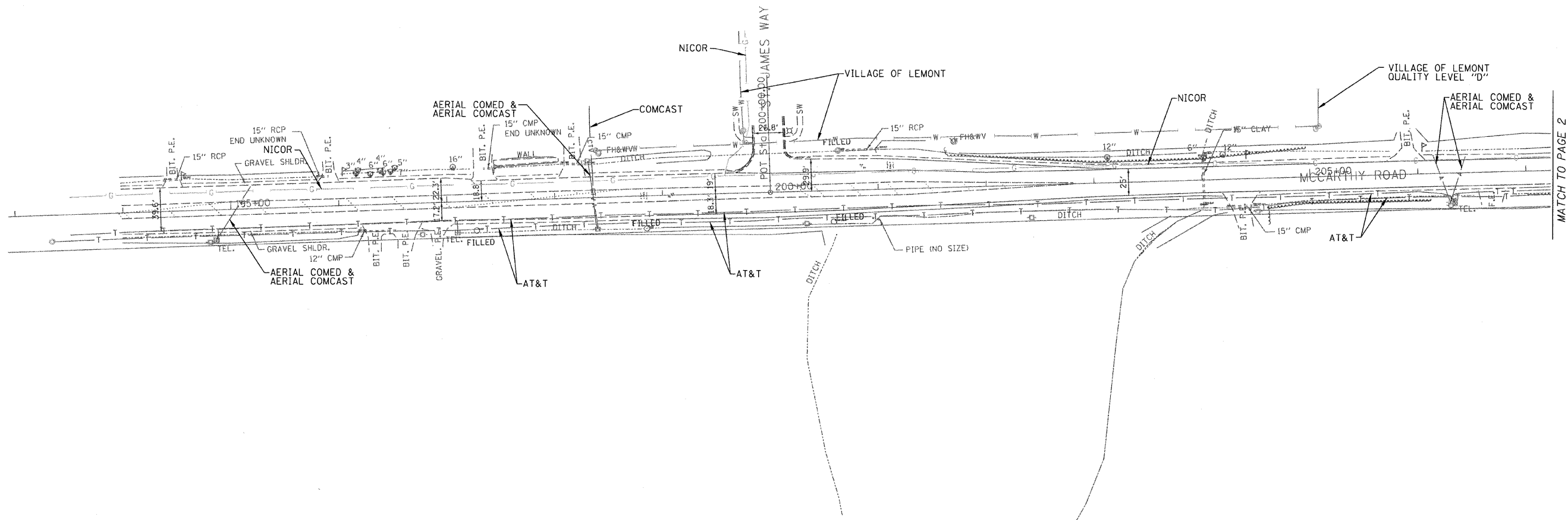
DESIGNED - CAC	REVISED - PER IDOT 5-19-10
DRAWN - BCD	REVISED -
CHECKED - TMS	REVISED -
DATE - 04/26/10	FILE - 100153-DU01.shx

STATE OF ILLINOIS
DEPARTMENT OF TRANSPORTATION

DRAINAGE AND UTILITY PLAN

SCALE: H: 1"=50' V: 1"=5'

F.A. RTE. 1587	SECTION 3098-T	COUNTY COOK	TOTAL SHEETS 17	SHEET NO. 7
FED. ROAD DIST. NO. ILLINOIS		FED. AID PROJECT		

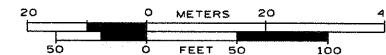


MATCH TO PAGE 2

— A — A —	AERIAL UTILITY
- - - - -	UNKNOWN
— CTV — CTV —	CABLE TV
— T — T —	TELEPHONE
— G — G —	GAS
— E — E —	ELECTRIC
— W — W —	WATER
— FO — FO —	FIBER OPTIC
— S — S —	SEWER
⊕	TBE TEST HOLE

Utilities shown in color on these plans as depicted in the legend have been investigated by Cardno TBE in accordance with SUE Industry Standards. All other information shown has been provided to Cardno TBE by others. TBE's SUE field investigation was finished on 4/23/10. Changes to utilities after this date may have been made and therefore may result in variances from this plan. Consideration should be given to updating this plan if deemed advisable prior to final design and construction.

ALL UTILITIES SHOWN IN COLOR
QUALITY LEVEL "B" UNLESS NOTED OTHERWISE.



TBE Job No. IL09510407
SUE Plan Page: 1 of 2

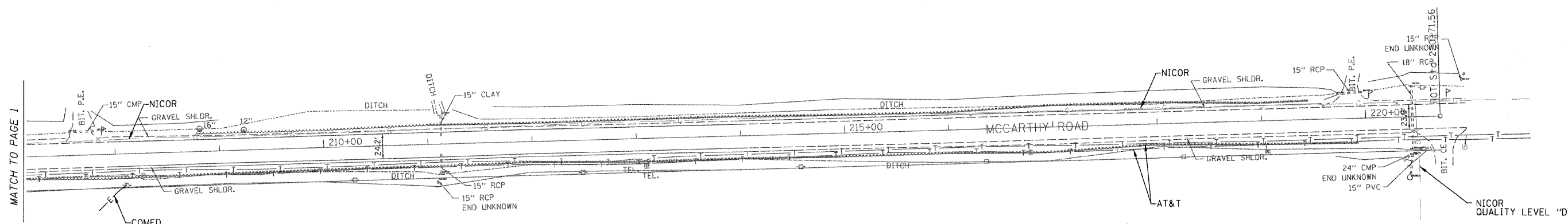
Utility Quality Level "A" : Test Hole
Utility Quality Level "B" : Designating
Utility Quality Level "C" : Research with Survey
Utility Quality Level "D" : Records Research

DESIGNED <i>JP</i>	REVISED
DRAWN <i>KLC</i>	REVISED
CHECKED	REVISED
DATE <i>5/05/10</i>	REVISED

STATE OF ILLINOIS
DEPARTMENT OF TRANSPORTATION

McCarthy Road 2000' E. and 700' W. of
St. James Way in Lemont.

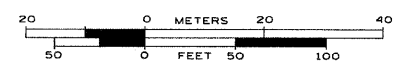
F.A. RTE.	SECTION	COUNTY	TOTAL SHEETS	SHEET NO.
1587	3098-T	Cook	17	8
Contract No. 60K75				
FED. ROAD DIST. NO. [ILLINOIS] IDOT Project No. D-91-588-10				



- A — A — AERIAL UTILITY
- — — — — UNKNOWN
- CTV — CTV — CABLE TV
- T — T — TELEPHONE
- G — G — GAS
- E — E — ELECTRIC
- W — W — WATER
- FO — FO — FIBER OPTIC
- — — — — SEWER
- ⊕ — TBE TEST HOLE

Utilities shown in color on these plans as depicted in the legend have been investigated by Cardno TBE in accordance with SUE Industry Standards. All other information shown has been provided to Cardno TBE by others. TBE's SUE field investigation was finished on 4/23/10. Changes to utilities after this date may have been made and therefore may result in variances from this plan. Consideration should be given to updating this plan if deemed advisable prior to final design and construction.

ALL UTILITIES SHOWN IN COLOR
QUALITY LEVEL "B" UNLESS NOTED OTHERWISE.



TBE Job No. IL09510407
SUE Plan Page: 2 of 2

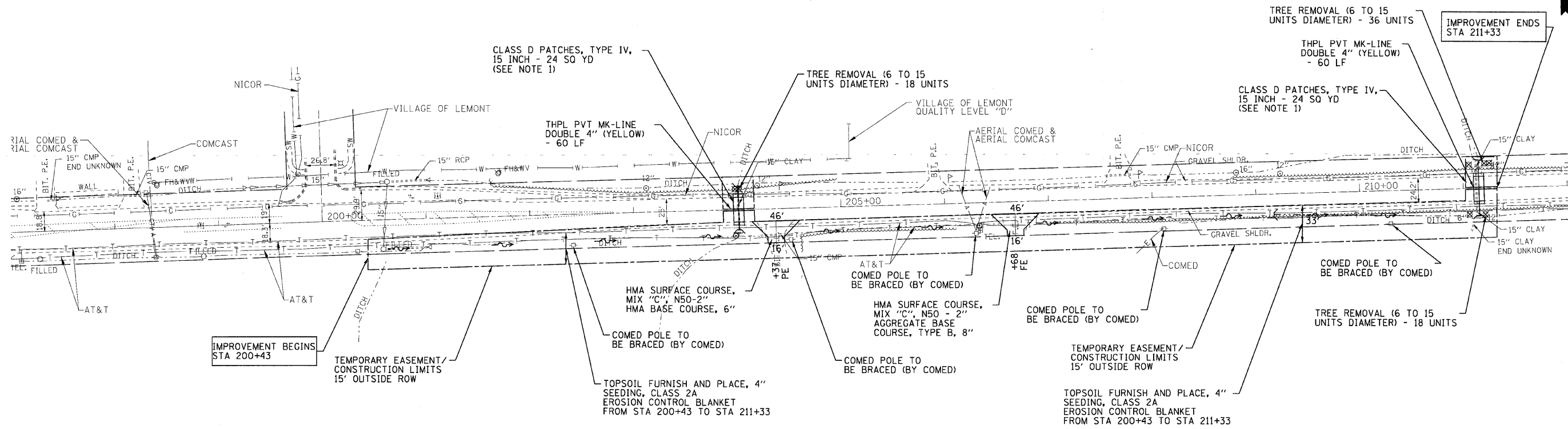
Utility Quality Level "A": Test Hole
Utility Quality Level "B": Designating
Utility Quality Level "C": Research with Survey
Utility Quality Level "D": Records Research

DESIGNED	JP	REVISED	
DRAWN	KLC	REVISED	
CHECKED		REVISED	
DATE	5/05/10	REVISED	

STATE OF ILLINOIS
DEPARTMENT OF TRANSPORTATION

McCarthy Road 2000' E. and 700' W. of
St. James Way in Lemont.

F.A. RTE.	SECTION	COUNTY	TOTAL SHEETS	SHEET NO.
1587	3098-T	Cook	17	9
FED. ROAD DIST. No. ILLINOIS IDOT Project No. D-91-588-10			Contract No. 60K75	



MCCARTHY ROAD

NOTES:

1. THE TOP 2 INCHES OF THE CLASS D PATCH SHALL BE HOT-MIX ASPHALT SURFACE COURSE, "MIX D", N50.
2. THE COST FOR THE HOT-MIX ASPHALT SURFACE COURSE, "MIX D", N50 WHICH IS TO BE PLACED OVER THE CLASS D PATCH SHALL BE INCLUDED IN THE COST FOR CLASS D PATCHES, TYPE IV, 15 INCH.
3. THE CLASS D PATCHES, TYPE IV, 15 INCH SHALL BE FOR THE ENTIREMENT PAVEMENT THICKNESS. THE EXISTING PAVEMENT DEPTH FOR MCCARTHY ROAD: HMA PAVEMENT, AVERAGE DEPTH OF 5 INCHES AND THE PCC BASE COURSE AVERAGE DEPTH OF 10 INCHES FOR A TOTAL DEPTH OF 15 INCHES.
4. THE COST FOR THE AGGREGATE SHOULDERS, TYPE B-6" SHALL BE INCLUDED IN THE COST FOR CLASS D PATCHES.

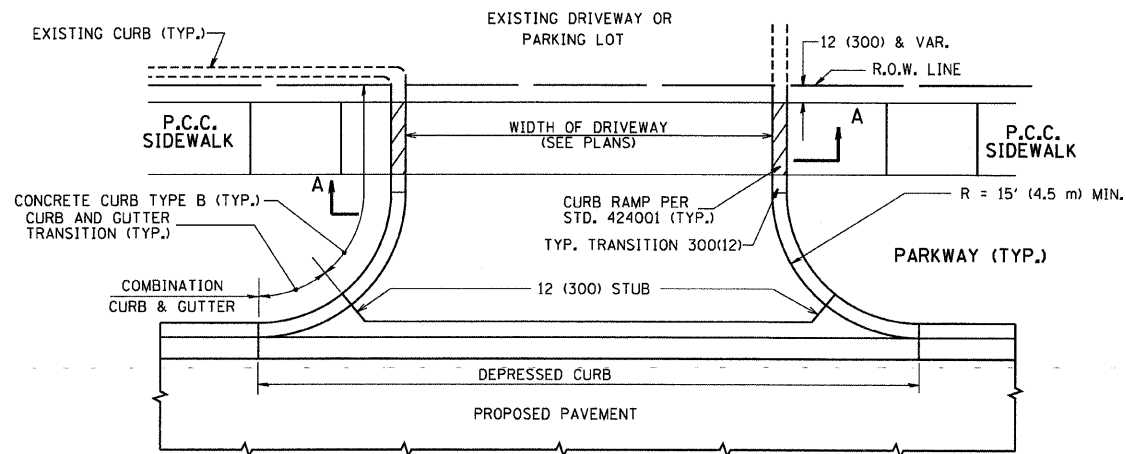
COPYRIGHT © 2010 BY BAYLER & WOODMAN, INC.
 STATE OF ILLINOIS - PROFESSIONAL DESIGN FIRM
 LICENSE NO. - 018-0001 - EXPRESS 4/30/2011
 51227200 4228 PM
 ...:\10153-LANDSCAPING\10153-LANDSCAPING.DWG
 ...:\10153-LANDSCAPING\10153-LANDSCAPING.PLT
 ...:\10153-LANDSCAPING\10153-LANDSCAPING.PLT



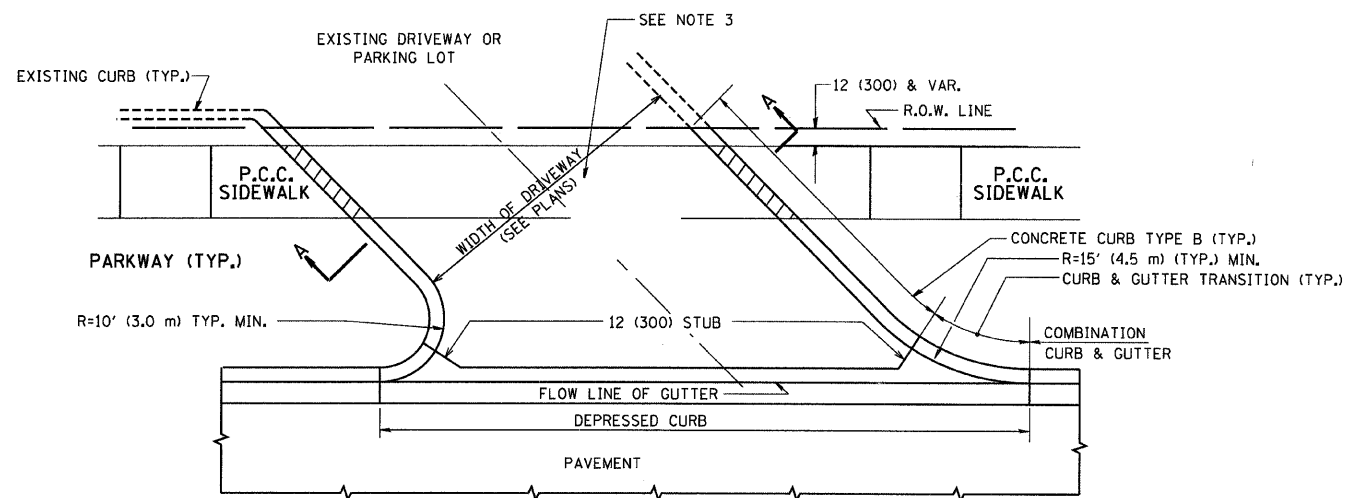
DESIGNED - CAC	REVISED - PER IDOT 5-19-10
DRAWN - BCD	REVISED -
CHECKED - TMS	REVISED -
DATE - 04/26/10	FILE - 100153-Landscaping.sht

STATE OF ILLINOIS
DEPARTMENT OF TRANSPORTATION

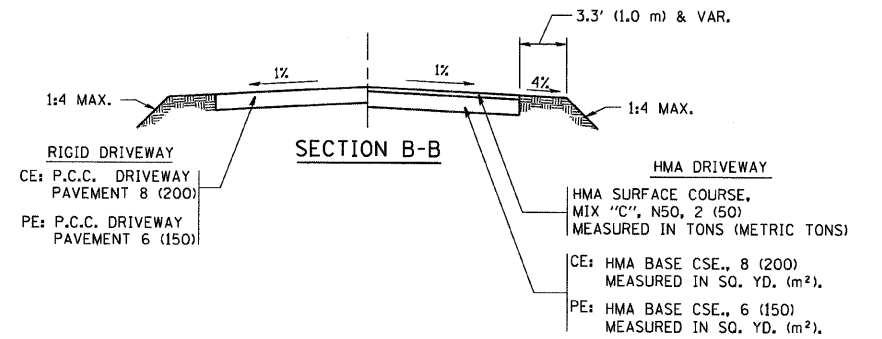
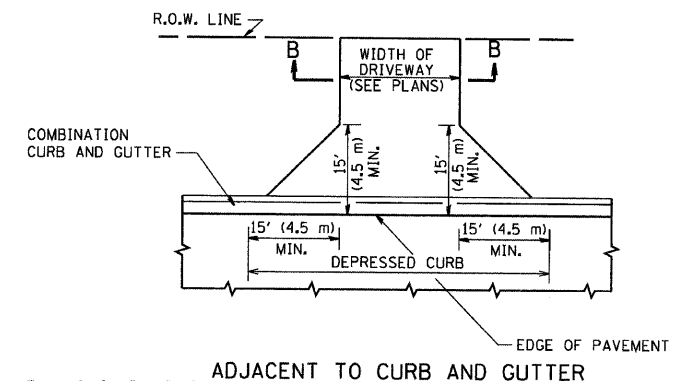
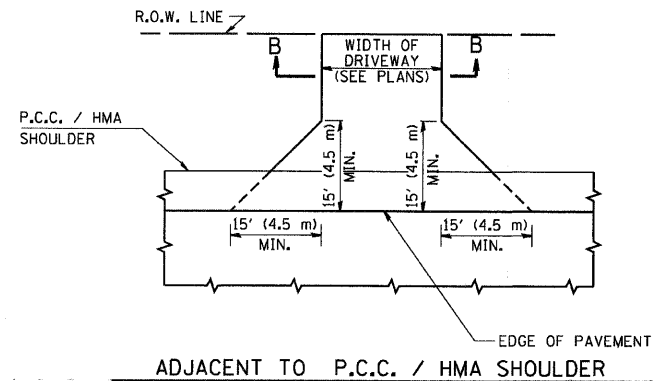
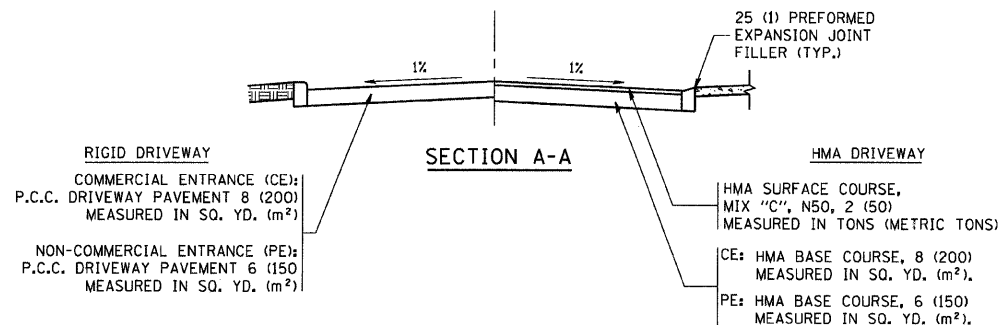
ROADWAY PLAN		F.A. RTE.	SECTION	COUNTY	TOTAL SHEETS	SHEET NO.
SCALE: 1" = 50'		1587	3098-T	COOK	17	10
STA. TO STA.		CONTRACT NO. 60K75				
		FED. ROAD DIST. NO. [ILLINOIS] FED. AID PROJECT				



WITH CONCRETE CURB, TYPE B



WITH CONCRETE CURB, TYPE B



GENERAL NOTES:

DRIVEWAY SLOPES, LOCATIONS, & GEOMETRIC LAYOUT SHALL BE IN ACCORDANCE WITH THE LATEST EDITION OF THE "HANDBOOK FOR POLICY ON PERMITS FOR ACCESS DRIVEWAYS TO STATE HIGHWAYS". FOR FURTHER LAYOUT REQUIREMENTS, REFER TO ILLUSTRATIONS IN THE PERMIT HANDBOOK. DRIVEWAYS SHALL BE REPLACED IN KIND, UNLESS OTHERWISE NOTED ON THE PLANS.

COMMERCIAL DRIVEWAYS SHALL BE CONSTRUCTED WITH CONCRETE CURB, TYPE B RETURNS EXCEPT WHEN THE SIDEWALK EDGE IS 4 FEET (1.2 METERS) OR LESS FROM THE BACK OF CURB, CONSTRUCT A FLARE DRIVEWAY WITHOUT CURB.

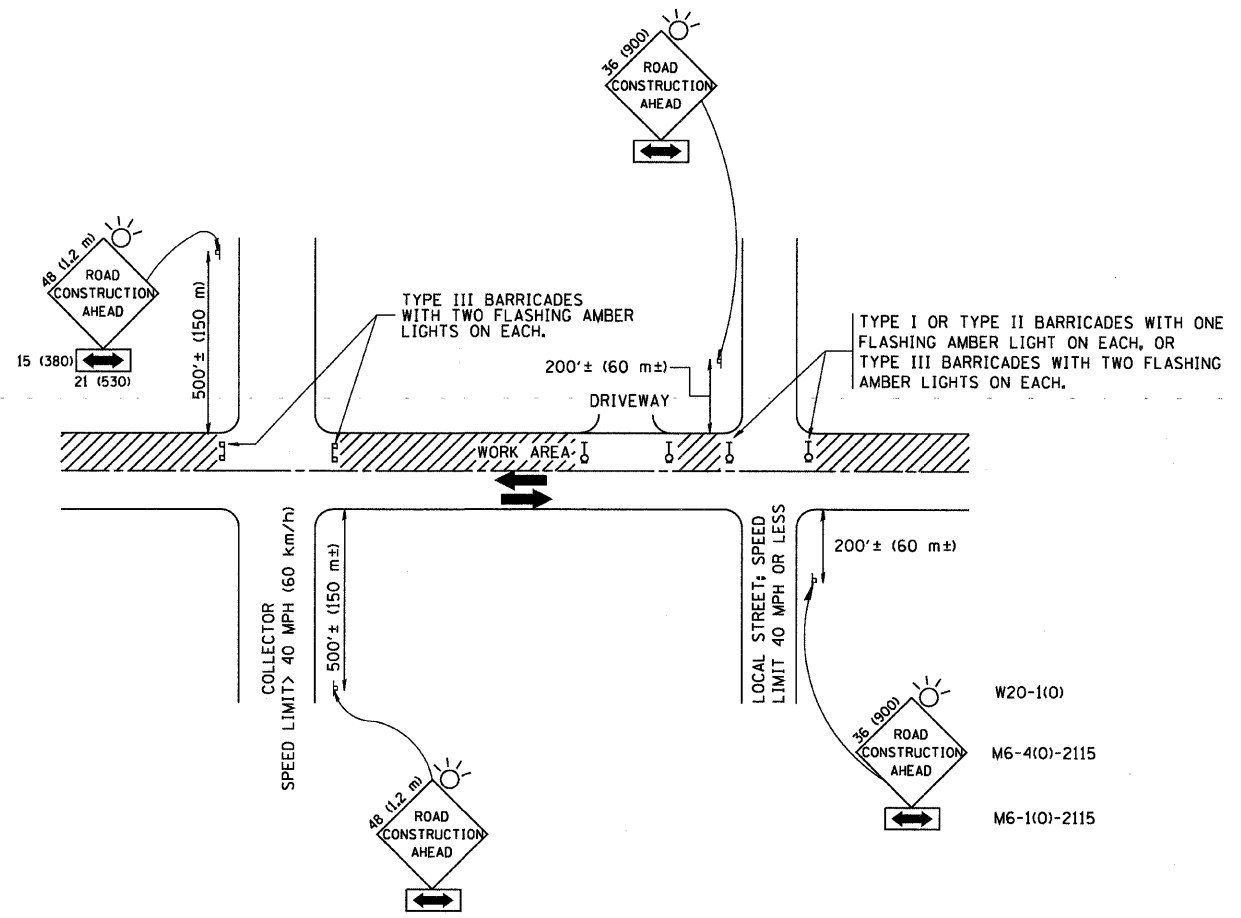
THE RESIDENT ENGINEER SHALL CONTACT THE TRAFFIC PERMIT OFFICE AT 847/ 705-4131 FOR ANY QUESTIONS ON DRIVEWAYS SHOWN IN THE PLANS; SPECIFICALLY IN REFERENCE TO ADDITIONAL AND/OR RELOCATION/REMOVAL OF A DRIVEWAY.

COMBINATION CONCRETE CURB & GUTTER SHALL BE MEASURED STRAIGHT ACROSS THE DRIVEWAY. NO ADDITIONAL COMPENSATION WILL BE ALLOWED FOR THE CURB & GUTTER TRANSITION.

1 (25) PREFORMED EXPANSION JOINT FILLER WILL NOT BE PAID SEPARATELY, BUT SHALL BE CONSIDERED INCLUDED IN THE COST OF THE P.C.C. DRIVEWAY PAVEMENT OR P.C.C. SIDEWALK.

WHEN THE P.C.C. SIDEWALK EXTENDS THROUGH THE DRIVEWAY, THE THICKNESS OF THE SIDEWALK IN THE DRIVEWAY AREA SHALL BE THE SAME AS THE DRIVEWAY THICKNESS. SIDEWALK WILL BE PAID FOR AS P.C.C. SIDEWALK OF THE THICKNESS SPECIFIED. SIDEWALK CROSS SLOPE THRU DRIVEWAY AREA TO BE A MAXIMUM OF 1:50.

FILE NAME = c:\projects\distatd22x34\bd01.dgn	USER NAME = bauerdl	DESIGNED - R. SHAH	REVISED - M. GOMEZ 04-06-01	STATE OF ILLINOIS DEPARTMENT OF TRANSPORTATION	DRIVEWAY DETAILS - DISTANCE BETWEEN R.O.W. AND FACE OF CURB & EDGE OF SHOULDER >= 15' (4.5 m)	F.A. - RTE. -	SECTION	COUNTY	TOTAL SHEETS	SHEET NO.
	PLOT SCALE = 49,9999 ' / IN.	DRAWN -	REVISED - P. LOFLUER 04-15-03			1587	3098-T	COOK	17	11
	PLOT DATE = 6/12/2008	CHECKED -	REVISED - R. BORO 01-01-07			BD0156-07 (BD-01)			CONTRACT NO. 60K75	
		DATE - 11-04-95	REVISED - R. BORO 06-11-08			SCALE: NONE SHEET NO. 1 OF 1 SHEETS STA. TO STA. FED. ROAD DIST. NO. 1 (ILLINOIS) FED. AID PROJECT				



TRAFFIC CONTROL AND PROTECTION FOR SIDE ROADS, INTERSECTIONS, AND DRIVEWAYS

NOTES:

- A. FOR NO LANE RESTRICTION ON THE SIDE ROAD OR DRIVEWAYS
 1. SIDE ROAD WITH A SPEED LIMIT OF 40 MPH (60 km/h) OR LESS AS SHOWN ON THE DRAWING AND AS DIRECTED BY THE ENGINEER:
 - a) ONE ROAD CONSTRUCTION AHEAD SIGN 36 x 36 (900x900) WITH A FLASHER AND FLAG MOUNTED ON IT APPROXIMATELY 200' (60 m) IN ADVANCE OF THE MAIN ROUTE.
 - b) THE CLOSED PORTION OF THE MAIN ROUTE SHALL BE PROTECTED BY BLOCKING WITH TYPE I, TYPE II OR TYPE III BARRICADES, 1/3 OF THE CROSS SECTION OF THE CLOSED PORTION.
 2. SIDE ROAD WITH A SPEED LIMIT GREATER THAN 40 MPH (60 km/h) AS SHOWN ON THE DRAWING AND AS DIRECTED BY THE ENGINEER:
 - a) ONE ROAD CONSTRUCTION AHEAD SIGN 48 x 48 (1.2 m x 1.2 m) WITH A FLASHER MOUNTED ON IT APPROXIMATELY 500' (150 m) IN ADVANCE OF THE MAIN ROUTE.
 - b) THE CLOSED PORTION OF THE MAIN ROUTE SHALL BE PROTECTED BY BLOCKING WITH TYPE III BARRICADES, 1/2 OF THE CROSS SECTION OF THE CLOSED PORTION.
- 3. WHEN THE SIDE ROAD LIES BETWEEN THE BEGINNING OF THE MAINLINE SIGNING AND THE WORK ZONE, A SINGLE HEADED ARROW (M6-1) SHALL BE USED IN LIEU OF THE DOUBLE HEADED ARROW (M6-4).

- B. FOR A LANE CLOSURE ON A SIDE ROAD OR DRIVEWAY:

USE APPLICABLE PORTIONS OF THE TYPICAL APPLICATION OF TRAFFIC CONTROL DEVICES (STD. 701501, STD. 701606 OR THE APPROPRIATE STANDARD). THE SPACING OF SIGNS AND BARRICADES SHALL BE ADJUSTED FOR FIELD CONDITIONS AS DIRECTED BY THE ENGINEER. THE DIRECTIONAL ARROW SHALL BE COVERED OR REMOVED WHEN NO LONGER CONSISTENT WITH THE SIDE ROAD LANE CLOSURE.
- C. ADVANCE WARNING SIGNS ARE TO BE OMITTED ON DRIVEWAY UNLESS OTHERWISE NOTED.
- D. THE TRAFFIC CONTROL AND PROTECTION FOR SIDE ROADS, INTERSECTIONS, AND DRIVEWAYS SHALL BE INCIDENTAL TO THE COST OF SPECIFIED TRAFFIC CONTROL STANDARDS OR ITEMS.

All dimensions are in millimeters (inches) unless otherwise shown.

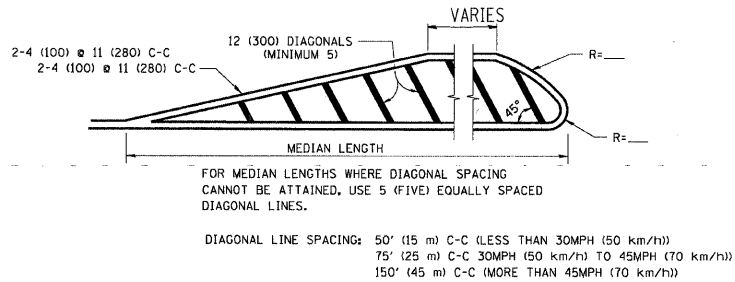
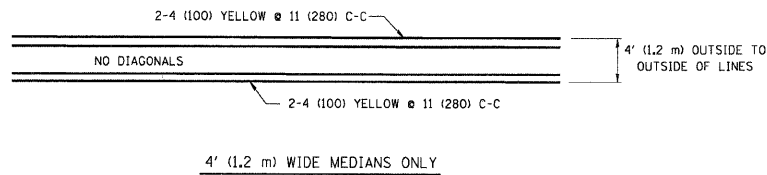
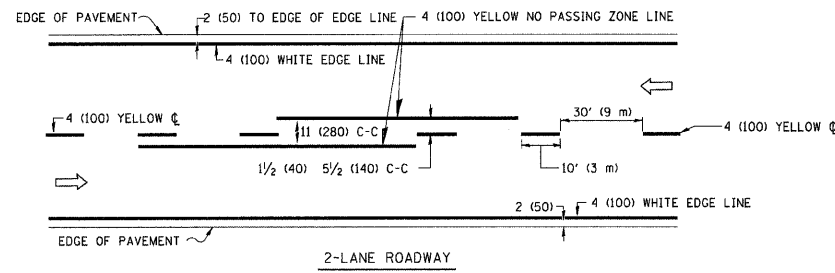
FILE NAME =	USER NAME = gegl1enob1	DESIGNED - LHA	REVISED - J. OBERLE 10-18-95
W:\diststd\22x34\to18.dgn		DRAWN -	REVISED - A. HOUSEH 03-06-96
	PLOT SCALE = 50.000' / IN.	CHECKED -	REVISED - A. HOUSEH 10-15-96
	PLOT DATE = 1/4/2008	DATE - 06-89	REVISED - T. RAMMACHER 01-06-00

STATE OF ILLINOIS
DEPARTMENT OF TRANSPORTATION

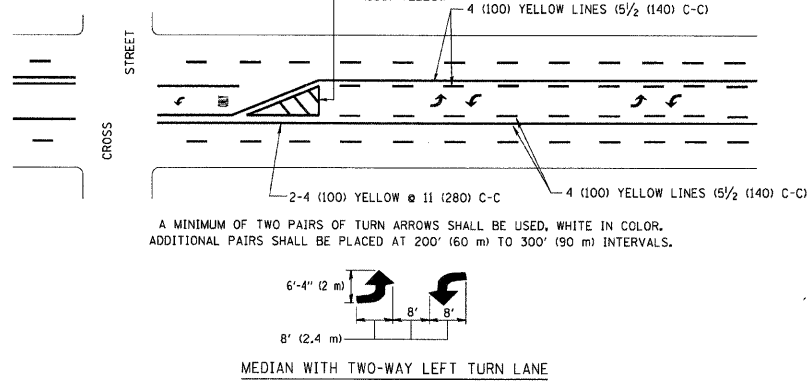
TRAFFIC CONTROL AND PROTECTION FOR
SIDE ROADS, INTERSECTIONS, AND DRIVEWAYS

SCALE: NONE SHEET NO. 1 OF 1 SHEETS STA. TO STA.

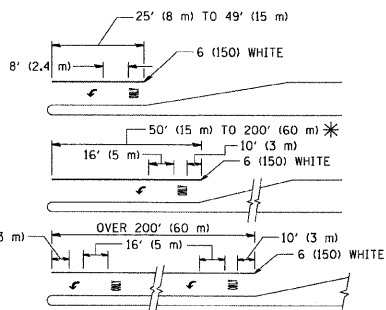
F.A. RTE.	SECTION	COUNTY	TOTAL SHEETS	SHEET NO.
1587	3098-T	COOK	17	12
TC-10			CONTRACT NO. 60K75	
FED. ROAD DIST. NO. 1 ILLINOIS FED. AID PROJECT				



MEDIAN OVER 4' (1.2 m) WIDE



TYPICAL PAINTED MEDIAN MARKING

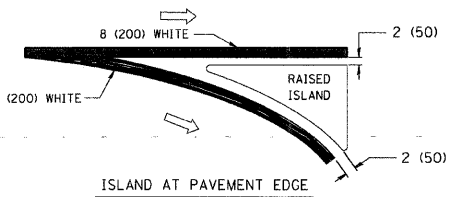
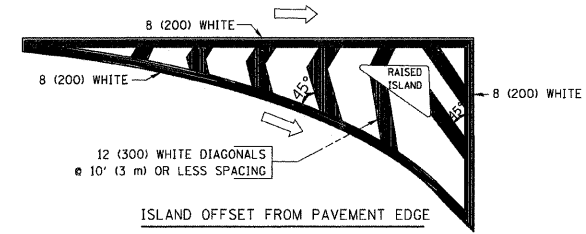


FULL SIZE LETTERS 8' (2.4 m) AND ARROWS SHALL BE USED.
AREA = 15.6 SQ. FT. (1.5 m²) ONLY AREA = 20.8 SQ. FT. (1.9 m²)

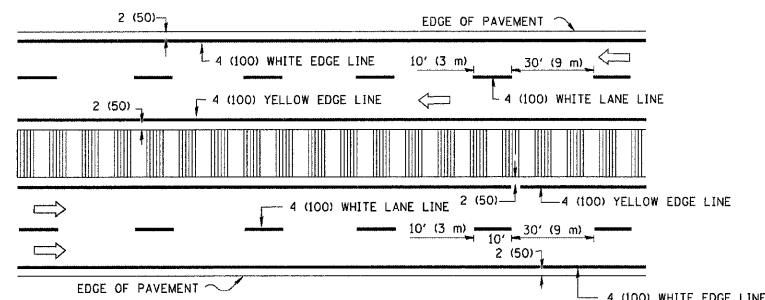
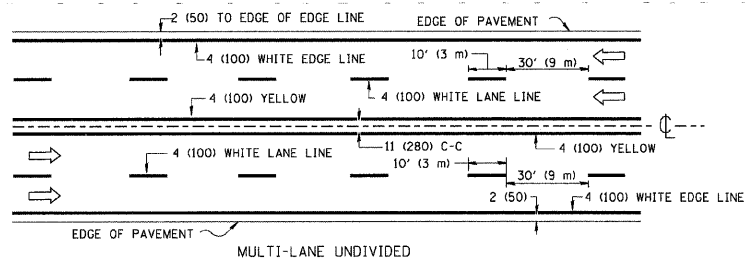
* TURN LANES IN EXCESS OF 400' (120 m) IN LENGTH MAY HAVE AN ADDITIONAL SET OF ARROW - "ONLY" INSTALLED MIDWAY BETWEEN THE OTHER TWO SETS OF ARROW - "ONLY".

TYPICAL LEFT (OR RIGHT) TURN LANE

TYPICAL TURN LANE MARKING

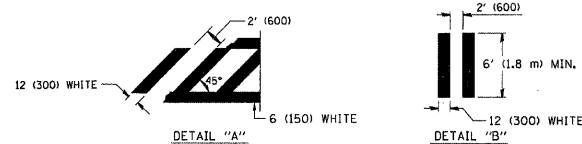
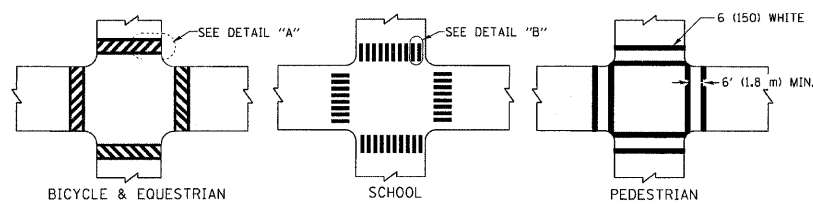


TYPICAL ISLAND MARKING



NOTE: MEDIANS WITH BARRIER CURB DO NOT REQUIRE AN EDGE LINE

TYPICAL LANE AND EDGE LINE MARKING

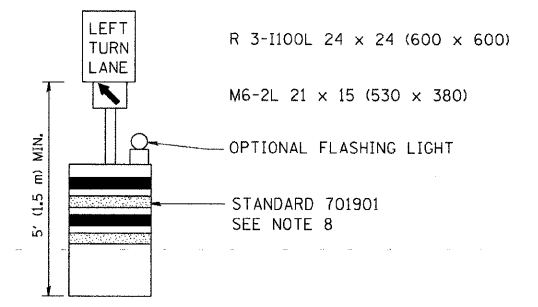
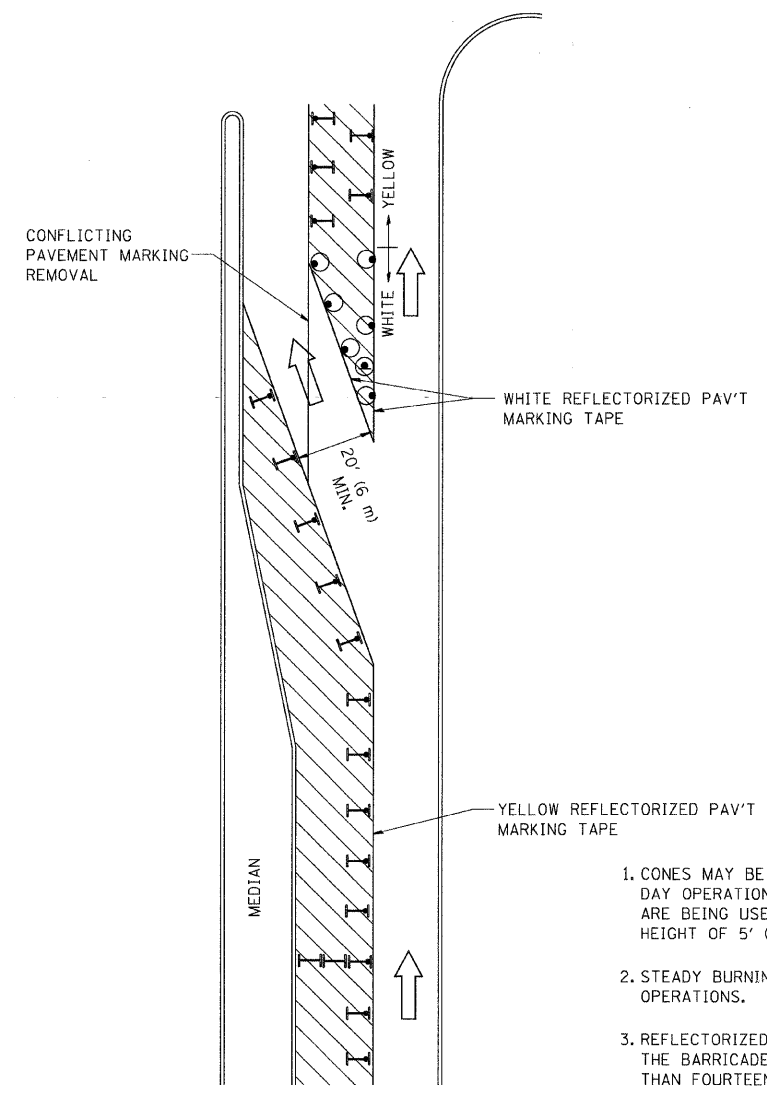


TYPICAL CROSSWALK MARKING

TYPE OF MARKING	WIDTH OF LINE	PATTERN	COLOR	SPACING / REMARKS
CENTERLINE ON 2 LANE PAVEMENT	4 (100)	SKIP-DASH	YELLOW	10' (3 m) LINE WITH 30' (9 m) SPACE
CENTERLINE ON MULTI-LANE UNDIVIDED PAVEMENT	2 @ 4 (100)	SOLID	YELLOW	11 (280) C-C
NO PASSING ZONE LINES: FOR ONE DIRECTION FOR BOTH DIRECTIONS	4 (100) 2 @ 4 (100)	SOLID SOLID	YELLOW YELLOW	5/2 (140) C-C FROM SKIP-DASH CENTERLINE 11 (280) C-C OMIT SKIP-DASH CENTERLINE BETWEEN
LANE LINES	4 (100) 5 (125) ON FREEWAYS	SKIP-DASH SKIP-DASH	WHITE WHITE	10' (3 m) LINE WITH 30' (9 m) SPACE
DOTTED LINES (EXTENSIONS OF CENTER, LANE OR TURN LANE MARKINGS)	SAME AS LINE BEING EXTENDED	SKIP-DASH	SAME AS LINE BEING EXTENDED	2' (600) LINE WITH 6' (1.8 m) SPACE
EDGE LINES	4 (100)	SOLID	YELLOW-LEFT WHITE-RIGHT	OUTLINE MOUNTABLE MEDIANS IN YELLOW; EDGE LINES ARE NOT USED NEXT TO BARRIER CURB
TURN LANE MARKINGS	6 (150) LINE; FULL SIZE LETTERS & SYMBOLS (8' (2.4m))	SOLID	WHITE	SEE TYPICAL TURN LANE MARKING DETAIL
TWO WAY LEFT TURN MARKING	2 @ 4 (100) EACH DIRECTION 8' (2.4m) LEFT ARROW	SKIP-DASH AND SOLID IN PAIRS	YELLOW WHITE	10' (3 m) LINE WITH 30' (9 m) SPACE FOR SKIP-DASH; 5/2 (140) C-C BETWEEN SOLID LINE AND SKIP-DASH LINE SEE TYPICAL TWO-WAY LEFT TURN MARKING DETAIL
CROSSWALK LINES (PEDESTRIAN) A. DIAGONALS (BIKE & EQUESTRIAN) B. LONGITUDINAL BARS (SCHOOL)	2 @ 6 (150) 12 (300) @ 45° 12 (300) @ 90°	SOLID SOLID	WHITE WHITE	NOT LESS THAN 6' (1.8 m) APART 2' (600) APART 2' (600) APART SEE TYPICAL CROSSWALK MARKING DETAILS.
STOP LINES	24 (600)	SOLID	WHITE	PLACE 4' (1.2 m) IN ADVANCE OF AND PARALLEL TO CROSSWALK, IF PRESENT. OTHERWISE, PLACE AT DESIRED STOPPING POINT, PARALLEL TO CROSSROAD CENTERLINE, WHERE POSSIBLE
PAINTED MEDIANS	2 @ 4 (100) WITH 12 (300) DIAGONALS @ 45° NO DIAGONALS USED FOR 4' (1.2 m) WIDE MEDIANS	SOLID	YELLOW; TWO WAY TRAFFIC WHITE; ONE WAY TRAFFIC	11 (280) C-C FOR THE DOUBLE LINE SEE TYPICAL PAINTED MEDIAN MARKING.
GORE MARKING AND CHANNELIZING LINES	8 (200) WITH 12 (300) DIAGONALS @ 45°	SOLID	WHITE	DIAGONALS: 15' (4.5 m) C-C (LESS THAN 30MPH (50 km/h)) 20' (6 m) C-C 30MPH (50 km/h) TO 45MPH (70 km/h) 30' (9 m) C-C (OVER 45MPH (70 km/h))
RAILROAD CROSSING	24 (600) TRANSVERSE LINES; "RR" 15 6' (1.8 m) LETTERS; 16 (400) LINE FOR "X"	SOLID	WHITE	SEE STATE STANDARD 780001 AREA OF: "R"=3.6 SQ. FT. (0.33 m ²) EACH "X"=54.0 SQ. FT. (5.0 m ²)
SHOULDER DIAGONALS	12 (300) @ 45°	SOLID	WHITE - RIGHT YELLOW - LEFT	50' (15 m) C-C (LESS THAN 30MPH (50 km/h)) 75' (25 m) C-C (30 MPH (50 km/h) TO 45MPH (70 km/h)) 150' (45 m) C-C (OVER 45MPH (70 km/h))

FOR FURTHER DETAILS ON PAVEMENT MARKING REFER TO STANDARD SPECIFICATIONS FOR ROAD AND BRIDGE CONSTRUCTION AND STATE STANDARD 780001.

All dimensions are in inches (millimeters) unless otherwise shown.

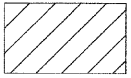
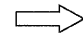
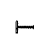


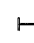


GENERAL NOTES

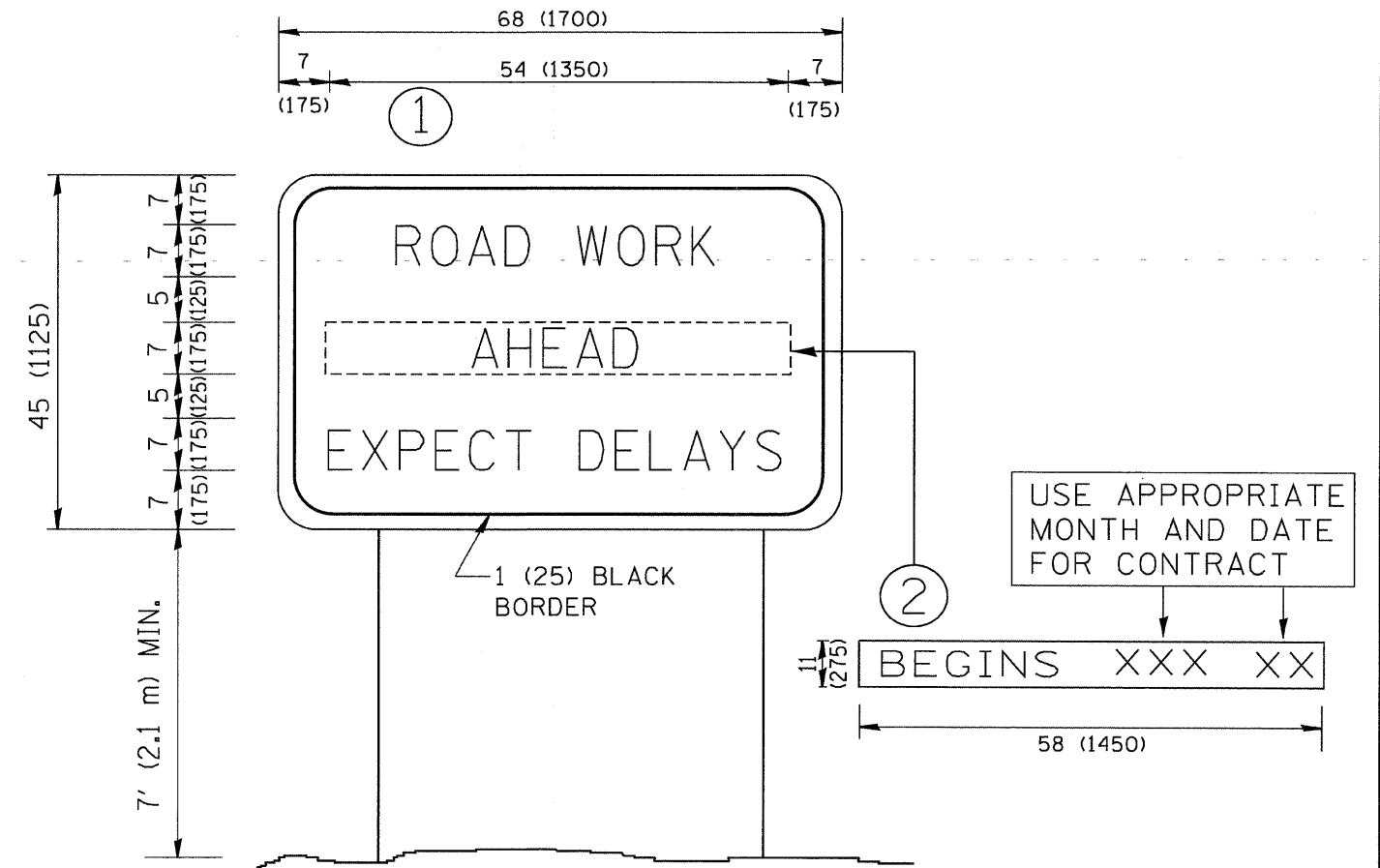
1. CONES MAY BE SUBSTITUTED FOR BARRICADES OR DRUMS AT HALF THE SPACING DURING DAY OPERATIONS. CONES SHALL BE A MINIMUM OF 28 (710) IN HEIGHT. WHEN CONES ARE BEING USED, THE "LEFT TURN LANE" SIGN MAY BE SKID MOUNTED AT A MINIMUM HEIGHT OF 5' (1.5 m).
2. STEADY BURNING LIGHTS WILL NOT BE REQUIRED ON BARRICADES OR DRUMS FOR DAY OPERATIONS. ALL LIGHTS SHALL BE MONODIRECTIONAL.
3. REFLECTORIZED TEMPORARY PAVEMENT MARKING TAPE SHALL BE PLACED THROUGHOUT THE BARRICADED AREA OF EACH TURN BAY WHERE THE CLOSURE TIME IS GREATER THAN FOURTEEN DAYS.
4. THIS APPLICATION ALSO APPLIES WHEN WORK IS BEING PERFORMED IN THE RIGHT LANE(S) AND THE RIGHT TURN BAY IS TO REMAIN OPEN. UNDER THIS CONDITION, "RIGHT TURN LANE" R3-100 24 x 24 (600 x 600) AND M6-2R 21 x 15 (530 x 380) SHALL BE USED.
5. THESE CONTROLS SHALL SUPPLEMENT MAINLINE TRAFFIC CONTROL FOR LANE CLOSURES.
6. LONGITUDINAL DIMENSIONS MAY BE ADJUSTED TO FIT FIELD CONDITIONS.
7. FORM OPER 725 IS REQUIRED.
8. IF A DRUM OR TYPE II BARRICADE WITH AN ATTACHED SIGN PANEL WHICH MEETS NCHRP 350 REQUIREMENTS IS NOT AVAILABLE, THE SIGNS SHALL BE MOUNTED, ABOVE THE BARRICADES, ON SEPARATE SIGNS SUPPORTS THAT MEET NCHRP 350 REQUIREMENTS.
9. TRAFFIC CONTROL AND PROTECTION AT TURN BAYS (TO REMAIN OPEN TO TRAFFIC) SHALL BE INCLUDED IN THE COST SPECIFIED TRAFFIC CONTROL STANDARDS OR ITEMS.

All dimensions are in inches (millimeters) unless otherwise shown.

LEGEND

-  WORK AREA
-  LANE OPEN TO TRAFFIC
-  TYPE I OR II BARRICADE WITH STEADY BURN LIGHT
-  DRUM WITH STEADY BURN LIGHT
-  DRUM WITH SIGN (WITH OPTIONAL FLASHING LIGHT) SEE DETAIL
-  TYPE I OR II CHECK BARRICADE WITH FLASHING LIGHT

FILE NAME =	USER NAME = drivakosgn	REVISED -T. RAMMACHER 09-08-94	REVISED - R. BORO 09-14-09	STATE OF ILLINOIS DEPARTMENT OF TRANSPORTATION	TRAFFIC CONTROL AND PROTECTION AT TURN BAYS (TO REMAIN OPEN TO TRAFFIC)	F.A. RTE.	SECTION	COUNTY	TOTAL SHEETS	SHEET NO.	
ct\pwwork\PIWIDOT\DRIVAKOSGN\d0108315\14.dgn	REVISED - A. HOUSEH 11-07-95	REVISED -	REVISED -			1587	3098-T	COOK	17	14	
PLOT SCALE = 49.9999 "/ IN.	REVISED - A. HOUSEH 10-12-96	REVISED -	REVISED -			TC-14					
PLOT DATE = 9/14/2009	REVISED -T. RAMMACHER 01-06-00	REVISED -	REVISED -			CONTRACT NO. 60K75					
					SCALE: NONE	SHEET NO. 1 OF 1 SHEETS		STA.	TO STA.		
					FED. ROAD DIST. NO. 1 [ILLINOIS] FED. AID PROJECT						



NOTES:

1. USE BLACK LETTERING ON ORANGE BACKGROUND.
2. ERECT SIGNS IN ADVANCE OF THE LOCATION FOR THE "ROAD CONSTRUCTION AHEAD" SIGN AT LOCATIONS AS DIRECTED BY THE ENGINEER.
3. ERECT SIGN ① WITH INSTALLED PANEL ② ONE WEEK PRIOR TO THE START OF CONSTRUCTION.
4. REMOVE PANEL ② SOON AFTER THE START OF CONSTRUCTION.
5. SEE SPECIAL PROVISION FOR "TEMPORARY INFORMATION SIGNING" FOR ADDITIONAL INFORMATION.
6. ONE SIGN ASSEMBLY EQUALS 25.70 SQ. FT. (2.3 SQ. M.)
7. SHALL BE PAID FOR AS TEMPORARY INFORMATION SIGNING.

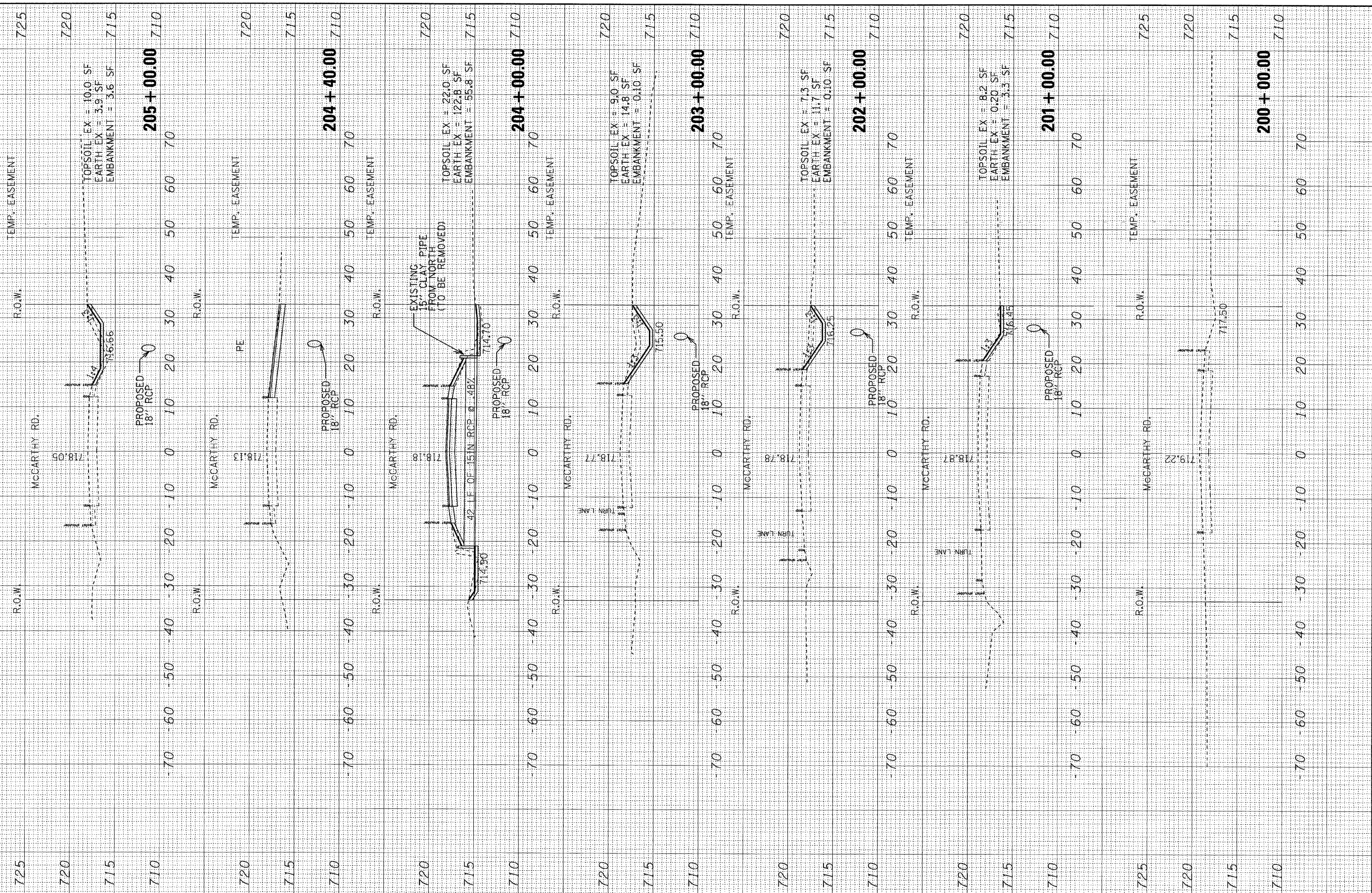
ALL DIMENSIONS ARE IN INCHES (MILLIMETERS) UNLESS OTHERWISE SHOWN.

FILE NAME = W:\diststd\22x34\to22.dgn	USER NAME = goglienobt	DESIGNED -	REVISED - R. MIRS 09-15-97	STATE OF ILLINOIS DEPARTMENT OF TRANSPORTATION	ARTERIAL ROAD INFORMATION SIGN		F.A. RTE. =	SECTION	COUNTY	TOTAL SHEETS	SHEET NO.
		DRAWN -	REVISED - R. MIRS 12-11-97				1587	3098-T	COOK	17	15
	PLOT SCALE = 50.000' / IN.	CHECKED -	REVISED - T. RAMMACHER 02-02-99				TC-22		CONTRACT NO. 60K75		
	PLOT DATE = 1/4/2008	DATE -	REVISED - C. JUCIUS 01-31-07				FED. ROAD DIST. NO. 1 ILLINOIS FED. AID PROJECT				
					SCALE: NONE	SHEET NO. 1 OF 1 SHEETS	STA.	TO STA.			

FINAL SURVEY	BY	DATE
SURVEYED		
PLOTTED		
NOTE BOOK		
AREAS CHECKED		
NO.		

ORIGINAL SURVEY	BY	DATE
SURVEYED		
PLOTTED		
NOTE BOOK		
AREAS CHECKED		
NO.		

CONTRACT # 60K75 BY BAXTER & WOODMAN INC.
 STATE OF ILLINOIS - PROFESSIONAL DESIGN FIRM
 LICENSE NO. 184-00121 - EXPIRES 4/30/2011
 5/22/2010 5:23 PM
 I:\WORK\60K75\60K75\DRAWING\60K75\60K75-Road-Xsec.dwg



725	R.O.W.	McCarthy Rd.	718.05
720			
715			
710			
720	R.O.W.	McCarthy Rd.	718.13
715			
710			
720	R.O.W.	McCarthy Rd.	718.18
715			
710			
720	R.O.W.	McCarthy Rd.	718.77
715			
710			
720	R.O.W.	McCarthy Rd.	718.78
715			
710			
720	R.O.W.	McCarthy Rd.	718.87
715			
710			
725	R.O.W.	McCarthy Rd.	719.22
720			
715			
710			

USER NAME =	DESIGNED - CAC	REVISED - PER 100T 5-19-10
PLLOT SCALE = HORIZ:1"=10', VERT:1"=5'	DRAWN - BCD	REVISED -
PLLOT DATE =	CHECKED - TMS	REVISED -
	DATE - 04-26-10	REVISED -

DESIGNED - CAC	REVISED - PER 100T 5-19-10
DRAWN - BCD	REVISED -
CHECKED - TMS	REVISED -
DATE - 04-26-10	REVISED -

STATE OF ILLINOIS
 DEPARTMENT OF TRANSPORTATION

MCCARTHY ROAD CROSS SECTIONS

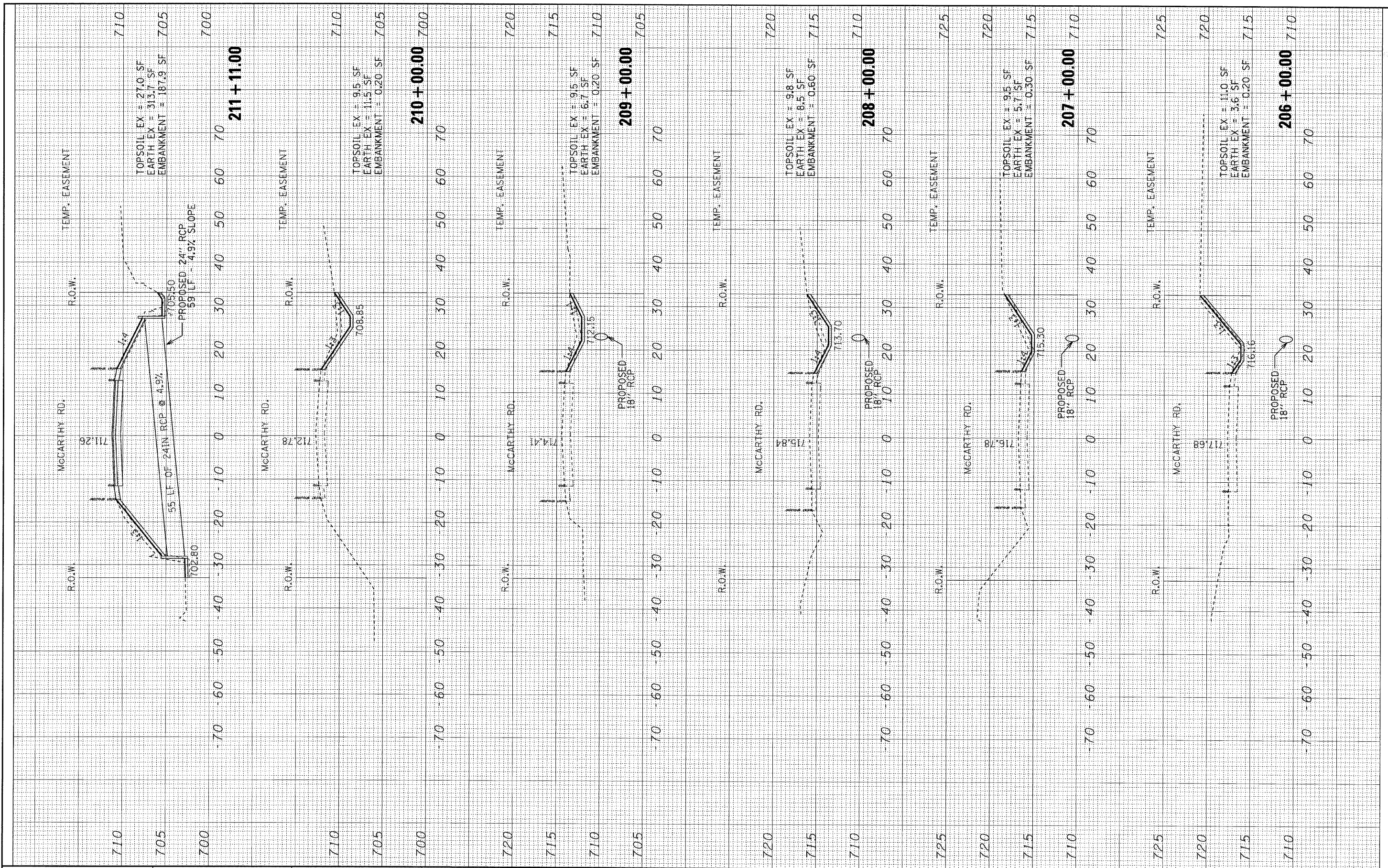
SCALE: H=1"=10' V=1"=5' SHEET NO. OF SHEETS STA. 200+00 TO STA. 205+00

F.A. RTE. 1587	SECTION 3098-T	COUNTY COOK	TOTAL SHEETS 17	SHEET NO. 16
CONTRACT NO. 60K75				ILLINOIS FED. AID PROJECT

FINAL SURVEY	SURVEYED	BY	DATE
NOTE BOOK	PLOTTED		
AREAS CHECKED	AREAS		
NO.			

ORIGINAL SURVEY	SURVEYED	BY	DATE
NOTE BOOK	PLOTTED		
AREAS CHECKED	AREAS		
NO.			

CONTRACT # 600 BY BAXTER & WOODMAN, INC.
 STATE OF ILLINOIS - PROFESSIONAL DESIGN FIRM
 LICENSE NO. 184-00121, EXPIRES 4/30/2011
 5/25/2010 5:28 PM
 I:\WORK\1101\10015-104\CADD\SURVEY\DRWINGS\DRWING\MCCARTHY_Road_xsecs.dgn



USER NAME =	DESIGNED - CAC	REVISED - PER 100T 5-19-10
PLOT SCALE = HORIZ: 1"=10', VERT: 1"=5'	DRAWN - BCD	REVISED -
PLOT DATE =	CHECKED - TMS	REVISED -
	DATE - 04-26-10	REVISED -

**STATE OF ILLINOIS
DEPARTMENT OF TRANSPORTATION**

MCCARTHY ROAD CROSS SECTIONS

SCALE: HORIZ: 1"=10' VERT: 1"=5' SHEET NO. OF SHEETS STA. 206+00 TO STA. 211+00

F.A. RTE. 1587	SECTION 3098-T	COUNTY COOK	TOTAL SHEETS 17	SHEET NO. 17
CONTRACT NO. 60K75				
ILLINOIS FED. AID PROJECT				