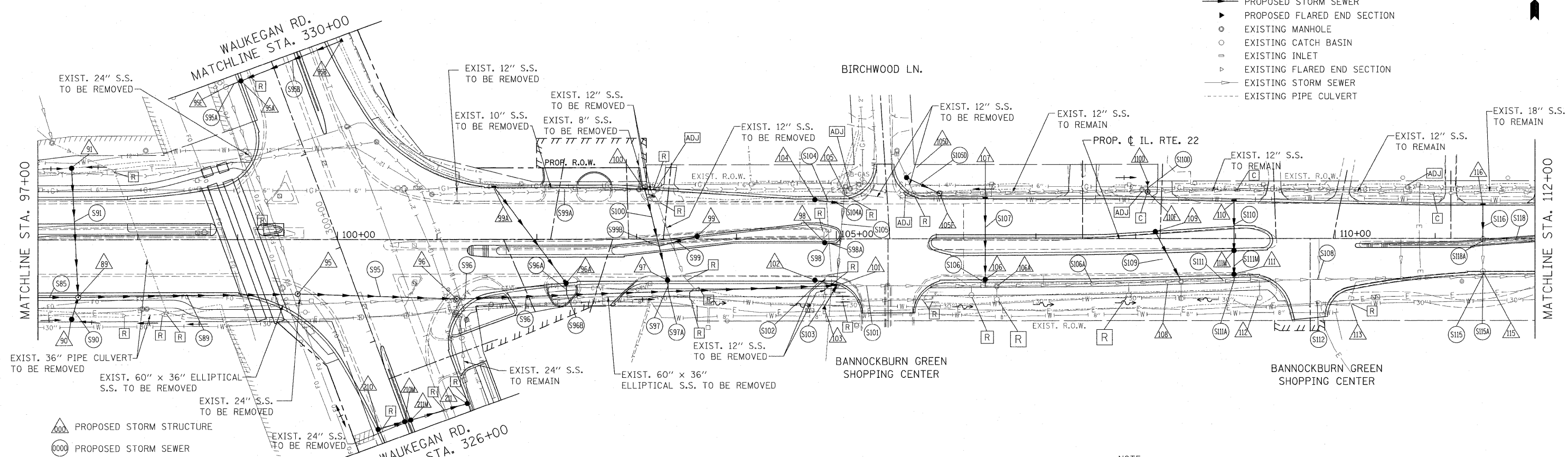
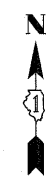


DATE	
BY	
REVISION	
PLANNED	
DESIGNED	
DRAWN	
CHECKED	
DATE	

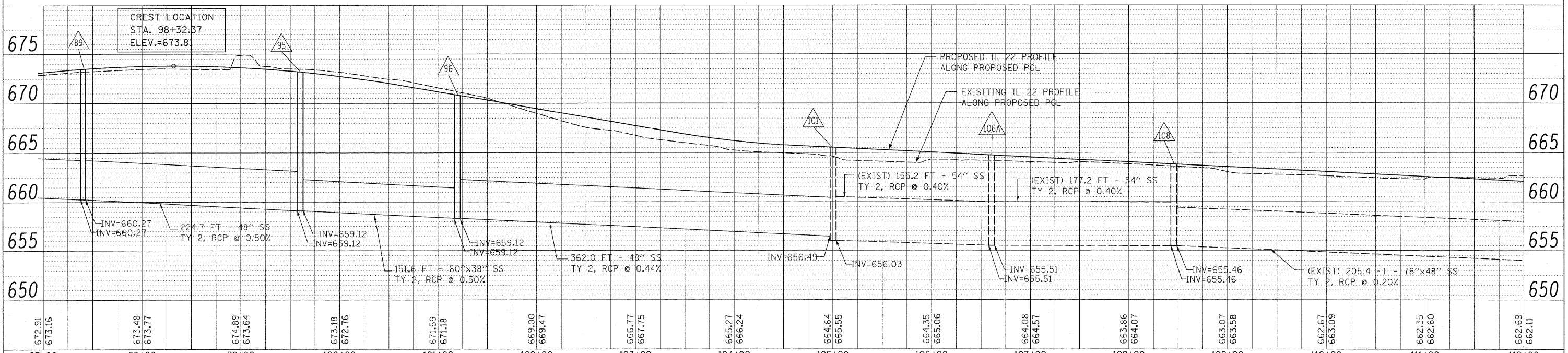
DATE	
BY	
REVISION	
PLANNED	
DESIGNED	
DRAWN	
CHECKED	
DATE	

- LEGEND:**
- PROPOSED MANHOLE
  - PROPOSED CATCH BASIN
  - PROPOSED STORM SEWER
  - ▶ PROPOSED FLARED END SECTION
  - EXISTING MANHOLE
  - EXISTING CATCH BASIN
  - EXISTING INLET
  - ▶ EXISTING FLARED END SECTION
  - EXISTING STORM SEWER
  - EXISTING PIPE CULVERT



**FOR UTILITY INFORMATION ONLY**

**NOTE:**  
STORM WATER STRUCTURE OFFSET LOCATIONS GIVEN ON THE DETAILED PLANS ARE TO THE FOLLOWING POINTS: A) FOR STRUCTURES FALLING IN THE CURB LINE - TO THE EDGE OF PAVEMENT; B) FOR ALL OTHER STRUCTURE LOCATIONS - TO THE CENTER OF THE STRUCTURE.



FILE NAME =	USER NAME = #USER#	DESIGNED - LP	REVISED -	<b>STATE OF ILLINOIS</b> <b>DEPARTMENT OF TRANSPORTATION</b>	<b>IL. ROUTE 22</b> <b>DRAINAGE PLAN AND PROFILE</b>	F.A.P. RTE.	SECTION	COUNTY	TOTAL SHEETS	SHEET NO.
W:\IL\RT22\2009 REVISIONS\Tree Removal Contract\CADD Sheets\0160L41-sht-drain.dgn	DRAWN - MC	REVISED -	337			2010-062-DTR	LAKE	56	27	
PLOT SCALE = #SCALE#	CHECKED - JP	REVISED -	CONTRACT NO. 60L41							
PLOT DATE = 5/13/2010	DATE - 05/14/2010	REVISED -	ILLINOIS FED. AID PROJECT							
SCALE: 1"=50'		SHEET NO. 27 OF 56 SHEETS		STA. 97+00 TO STA. 112+00						