

STATE OF ILLINOIS
DEPARTMENT OF TRANSPORTATION
DIVISION OF HIGHWAYS

PLANS FOR PROPOSED
FEDERAL AID HIGHWAY

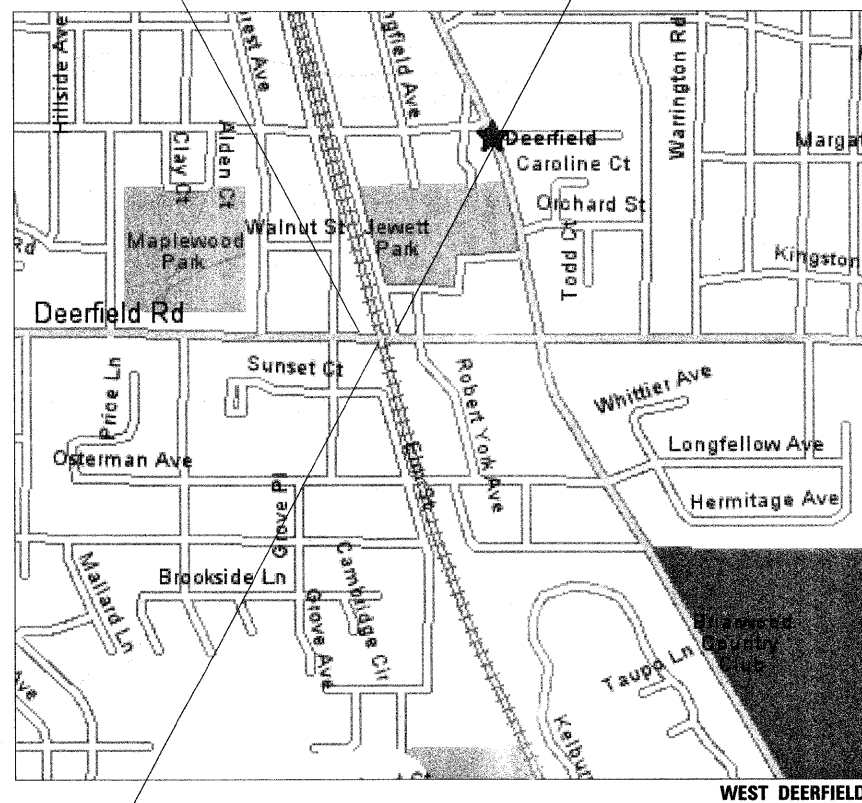
FOR INDEX OF SHEETS, SEE SHEET NO. 2

TRAFFIC DATA:

DESIGN SPEED 20 M.P.H.
PROJECTED PEAK HOUR VOLUME (2010): 95 PEDESTRIANS/BICYCLES

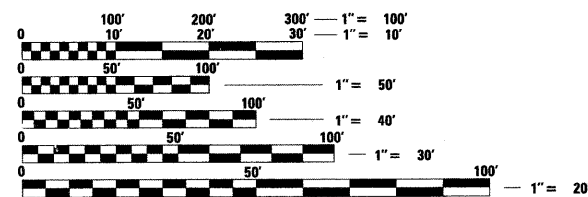
FAU 1257 (DEERFIELD ROAD)
SECTION 08-00083-00-BT
PROJECT CMM-TE-0001(798)
AT METRA MD-N PEDESTRIAN UNDERPASS
LAKE COUNTY
JOB C-91-027-09

BEGIN PROJECT STATION 20+46.1
END PROJECT STATION 23+95.2



GROSS LENGTH = 375.0 FT. = 0.069 MILE
NET LENGTH = 375.0 FT. = 0.069 MILE

THIS PROJECT IS LOCATED IN
THE VILLAGE OF DEERFIELD



FULL SIZE PLANS HAVE BEEN PREPARED USING STANDARD
ENGINEERING SCALES. REDUCED SIZED PLANS WILL NOT
CONFORM TO STANDARD SCALES. IN MAKING MEASUREMENTS
ON REDUCED PLANS, THE ABOVE SCALES MAY BE USED.

J.U.L.I.E.
JOINT UTILITY LOCATION INFORMATION FOR EXCAVATION
1-800-892-0123
OR 811

SN-049-6158 PROPOSED UNDERPASS
SN-049-9941 EXISTING METRA BRIDGE

CONTRACT NO. 63450

FIELD ENGINEER: ALEX HOUSEH P.E. (847) 705-4410

F.A.U. RTE.	SECTION	COUNTY	TOTAL SHEETS	SHEET NO.
1257	08-00083-00-BT	LAKE	51	1
		ILLINOIS	CONTRACT NO. 63450	

D-91-027-09



LOCATION OF SECTION INDICATED THUS: -

STATE OF ILLINOIS
DEPARTMENT OF TRANSPORTATION
DIVISION OF HIGHWAYS

Approved *Barbara K. [Signature]*
April 13, 2010
Village of Deerfield, Director of Public Works

Passed *[Signature]*
APRIL 16, 2010
District Engineer of Local Roads & Streets

Releasing for Bid
Based on Limited
Review *[Signature]*
APRIL 16, 2010
Deputy Director of Highways, Region 1 Engineer

SEAL
COMPANY: MCDONOUGH ASSOCIATES, INC.
ENGINEERS / ARCHITECTS
130 EAST RANDOLPH SUITE 1000
CHICAGO, ILLINOIS 60601
SIGNATURE: ALAN R SWANSON
EXP. 11/30/2011
Expires: 11/30/11

SEAL
COMPANY: MCDONOUGH ASSOCIATES, INC.
ENGINEERS / ARCHITECTS
130 EAST RANDOLPH SUITE 1000
CHICAGO, ILLINOIS 60601
SIGNATURE: KARL J HANSON
EXP. 11/30/2010
Expires: 11/30/10

PRINTED BY THE AUTHORITY
OF THE STATE OF ILLINOIS