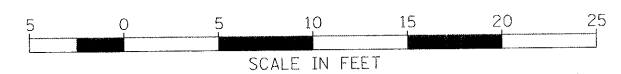
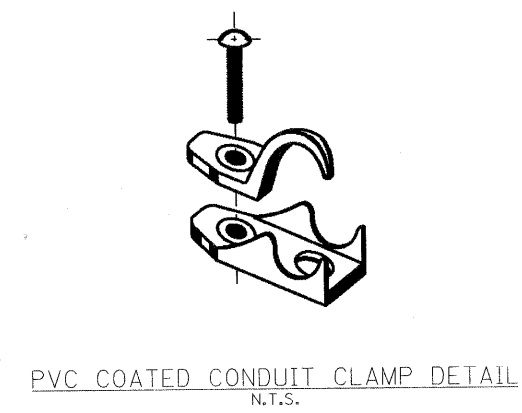
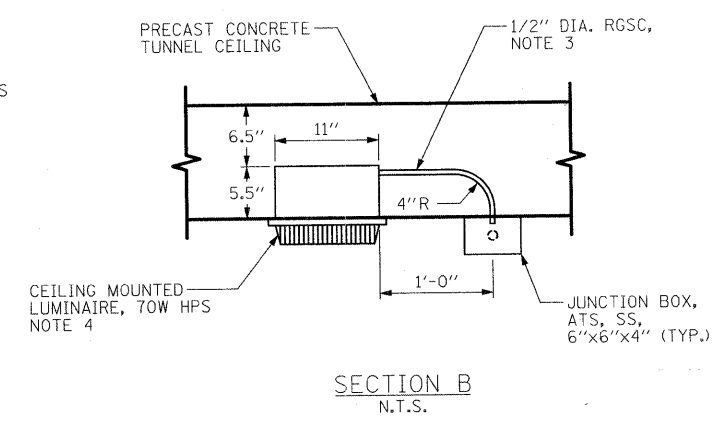
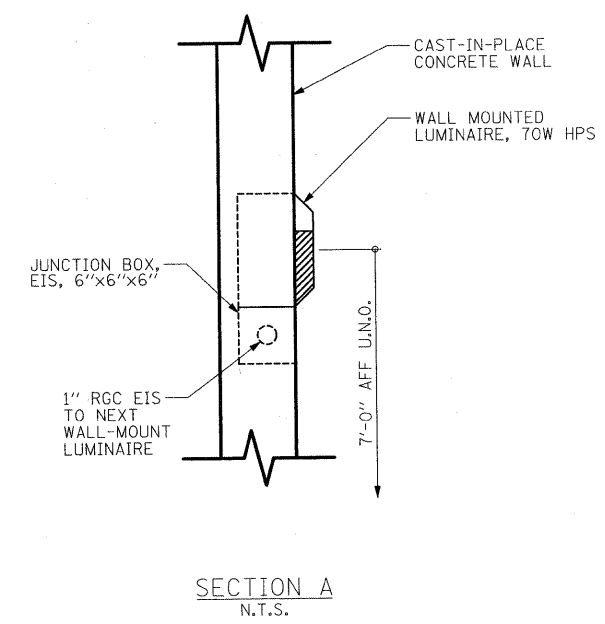
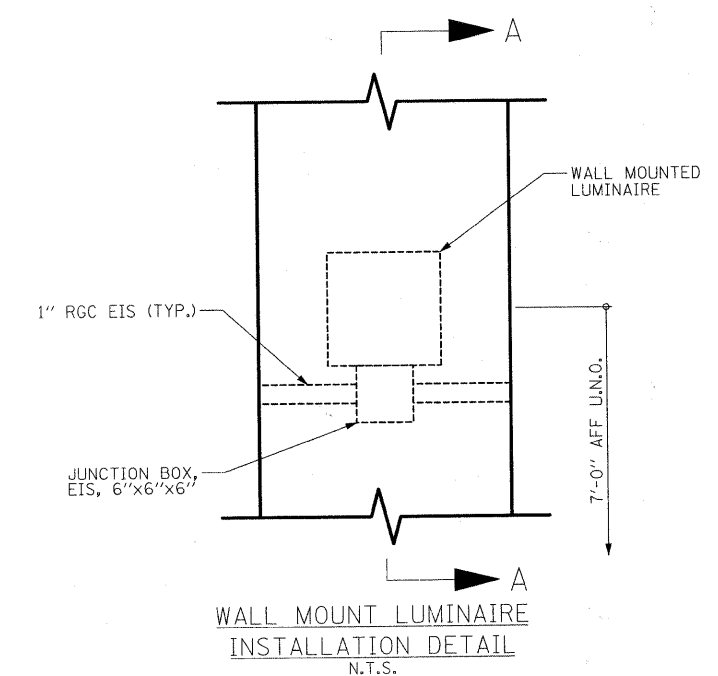
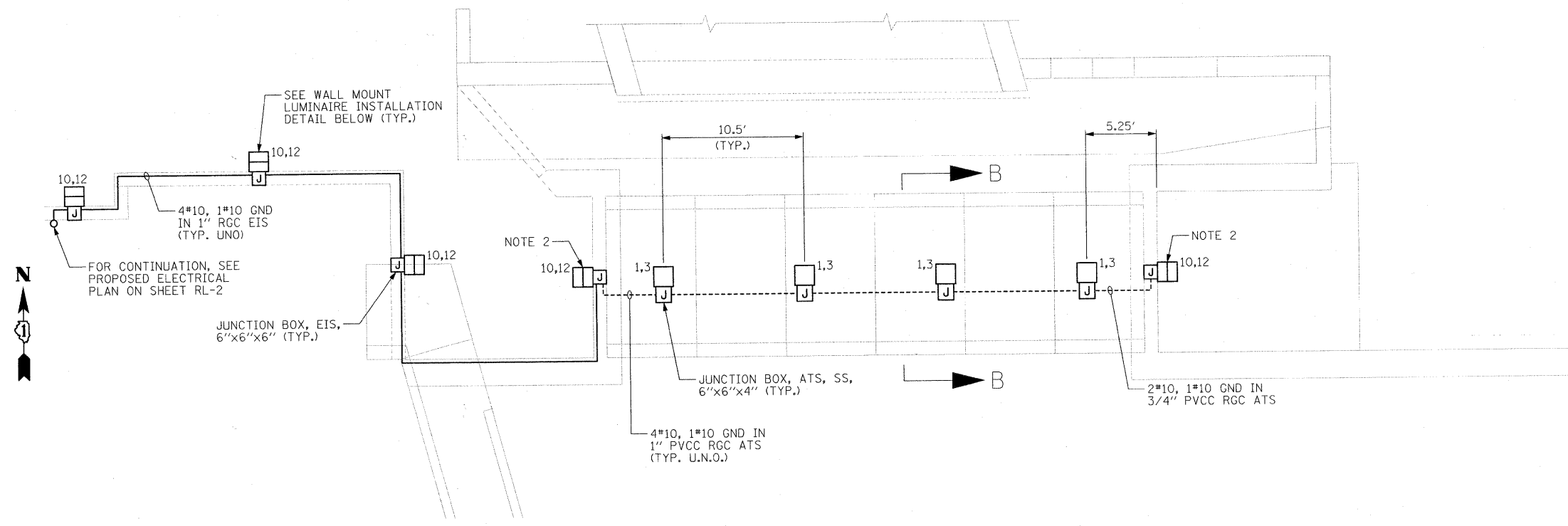


NOTES:

- SEE SHEET RL-1 FOR ELECTRICAL SYMBOL LIST, ABBREVIATIONS, AND GENERAL NOTES.
- FIXTURE SHALL BE MOUNTED AT 12'-0" AFF ON HEADWALL.
- 1/2" DIA. RGSC AND 4" RADIUS ELBOW FOR EACH CEILING MOUNTED LUMINAIRE SHALL BE FURNISHED AND INSTALLED BY THE PRECAST CONCRETE BOX MANUFACTURER. THE COST OF THIS WORK SHALL BE INCLUDED IN THE PRECAST CONCRETE BOX SEGMENTS PAY ITEM. SEPARATE PAYMENT WILL NOT BE MADE.
- VERIFY LUMINAIRE DIMENSIONS WITH THE LIGHT FIXTURE SHOP DRAWINGS PRIOR TO THE CONSTRUCTION OF PRECAST CONCRETE BOX SEGMENTS.



McDonough Associates Inc.
 Engineers / Architects
 130 East Randolph Street Chicago, Illinois 60601

FILE NAME	USER NAME = JMddlet	DESIGNED - JLW	REVISED -
DI-shht-aler		DRAWN - CJM	REVISED -
PLOT SCALE = 1:60		CHECKED - KMY	REVISED -
PLOT DATE = 6/14/2010		DATE - 04/09/10	REVISED -

STATE OF ILLINOIS
DEPARTMENT OF TRANSPORTATION

DEERFIELD RD PEDESTRIAN UNDERPASS
LIGHTING PLAN & DETAILS

SCALE: 1" = 5'	SHEET NO. OF SHEETS	STA. TO STA.
----------------	---------------------	--------------

F.A.U. RTE. 1257	SECTION 08-00083-00-BT	COUNTY LAKE	TOTAL SHEETS 51	SHEET NO. 17
FED. ROAD DIST. NO. 1 ILLINOIS FED. AID PROJECT				

CONTRACT NO. 63450