

LEFT SIDE ELEVATION

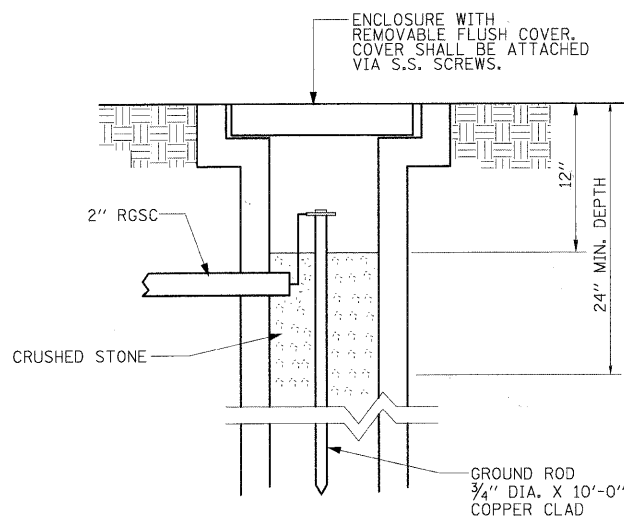
FRONT ELEVATION

LIGHTING CONTROLLER INSTALLATION DETAILS

NOT TO SCALE

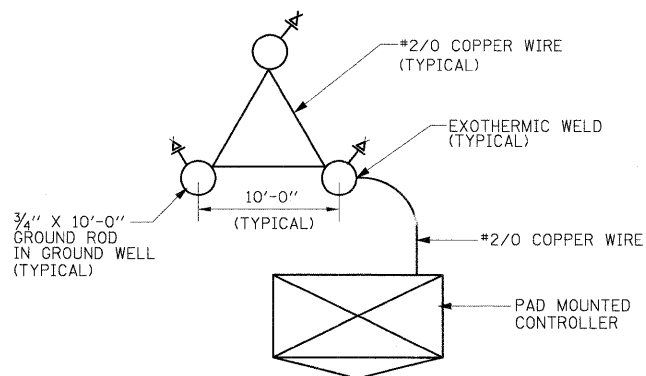
GENERAL NOTES:

1. COORDINATE PLACEMENT OF RACEWAYS WITH CONTROLLER MANUFACTURER TO ASSURE DOOR LATCH DOES NOT INTERFERE WITH CABLES OR OTHER DEVICES.
2. METER FITTING SHALL BE MOUNTED ON THE SIDE OF CONTROL CABINET AS SHOWN ON THE FRONT ELEVATION.
3. THE CONTRACTOR SHALL PROVIDE A GROUND FIELD AT CABINET LOCATION. THE GROUND RODS, ANCHOR BOLTS AND REINFORCEMENT STEEL SHALL ALL BE INTERCONNECTED.
4. GROUND FIELD INSTALLATION AT CONTROLLER LOCATION, INCLUDING ALL LABOR AND MATERIAL, SHALL BE CONSIDERED INCLUDED IN THE "LIGHTING CONTROLLER" PAY ITEM. NO SEPARATE PAYMENT WILL BE MADE.
5. THE CONTRACTOR SHALL VERIFY EXACT LOCATION OF GROUND FIELD WITH THE ENGINEER.
6. CABINET SHALL BE FABRICATED FROM 1#8" SHEET ALUMINUM #3003H14 FORMED AND ARC WELDED ASSEMBLY.
7. ALL SCREWS AND HARDWARE SHALL BE PLATED, GALVANIZED OR MADE OF BRASS, ALUMINUM OR STAINLESS STEEL.
8. 1" THICK POLYISOCYANURATE INSULATION SHALL BE INSTALLED AND PERMANENTLY CEMENTED ON ALL SIDES OF THE CABINET AND DOORS.
9. METAL MOUNTING PANEL SHALL BE #10 GAUGE GALVANIZED SHEET STEEL FLANGED BACK 3/4" I.D. ON 4 SIDES.
10. ALL DEVICES SHALL BE FRONT REMOVABLE.
11. ALL LUGS SHALL BE OF COPPER SCREWS AND CONNECTORS, SPRING HELD.
12. ALL CONTROL WIRING SHALL BE 600V TYPE RHW-2.
13. ALL POWER WIRING SHALL BE 600V TYPE RHH/RHW.
14. CIRCUIT BREAKERS, CONTACTOR AND OTHER COMPONENTS SHALL BE PANEL MOUNTED ON 1/8" THICK GLASTIC INSULATION BACK PANEL.
15. THE COMPLETED CONTROLLER SHALL BE U.L. LISTED AS AN INDUSTRIAL CONTROL PANEL UNDER UL508.
16. ALL 120 VOLT SYSTEM AND ALL CONTROL WIRING SHALL BE #12 AWG STRANDED, UNLESS OTHERWISE INDICATED.
17. ALL WIRING SHALL BE NEATLY DRESSED AND SUPPORTED.
18. THE COST OF PROVIDING WEATHER-PROOF METER SOCKET ON CONTROL CABINET SHALL BE INCLUDED IN THE COST OF LIGHTING CONTROLLER.
19. FOR LIGHTING CONTROLLER WIRING DIAGRAM, SEE SHEET RL-5.
20. ALL CONDUIT SHALL BE PVC SCHEDULE 40, UNLESS OTHERWISE NOTED.



GROUND WELL DETAIL

NOT TO SCALE



GROUND FIELD DETAIL

NOT TO SCALE

FILE NAME = D1-sht-elec04.dgn	USER NAME = JMiddlet	DESIGNED - JLW	REVISED -
		DRAWN - CJM	REVISED -
		CHECKED - KMY	REVISED -
		DATE - 04/09/10	REVISED -

F.A.U. RTE. 1257	SECTION 08-00083-00-BT	COUNTY LAKE	TOTAL SHEETS 51	SHEET NO. 18
CONTRACT NO. 63450				
FED. ROAD DIST. NO. 1 ILLINOIS FED. AID PROJECT				