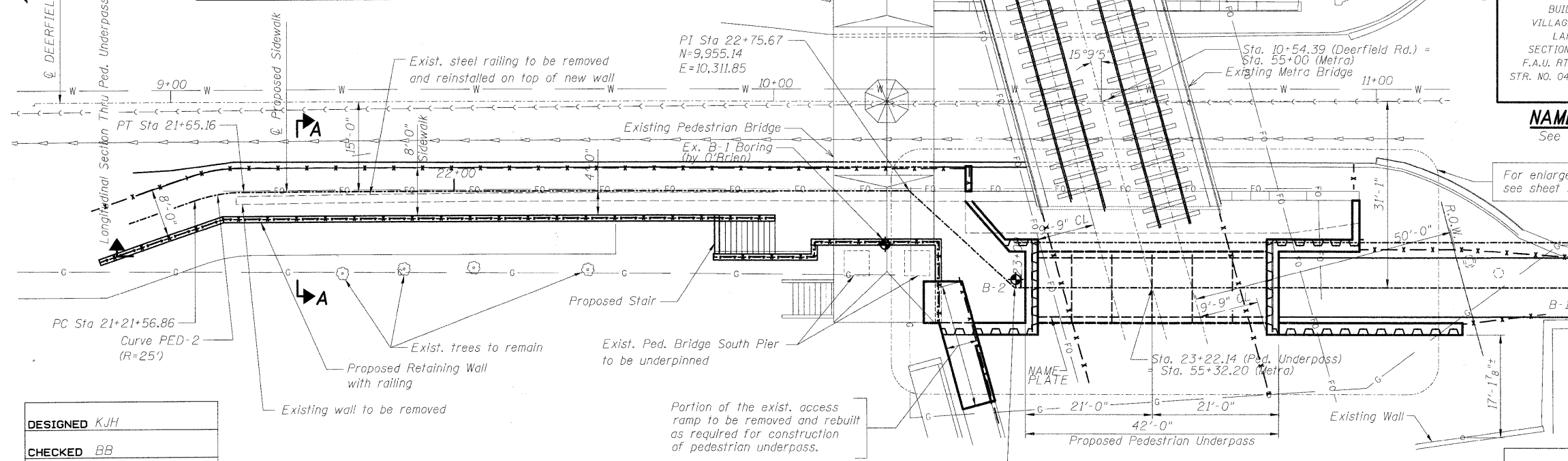
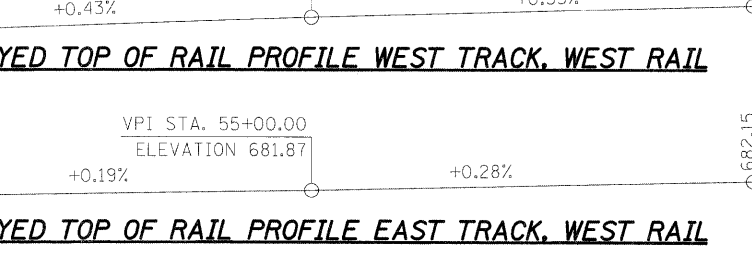
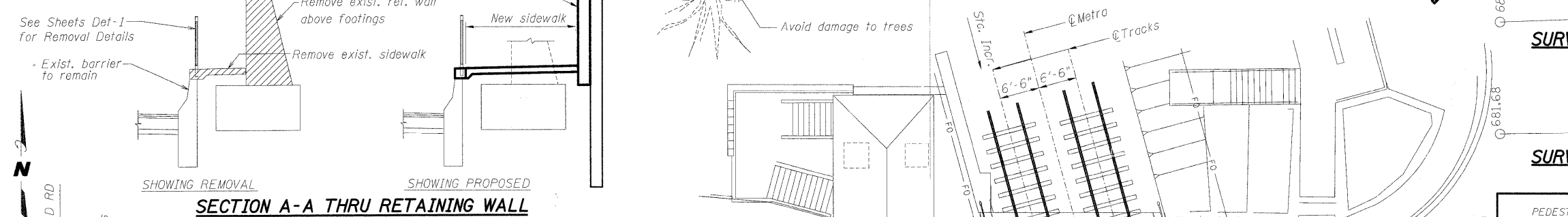
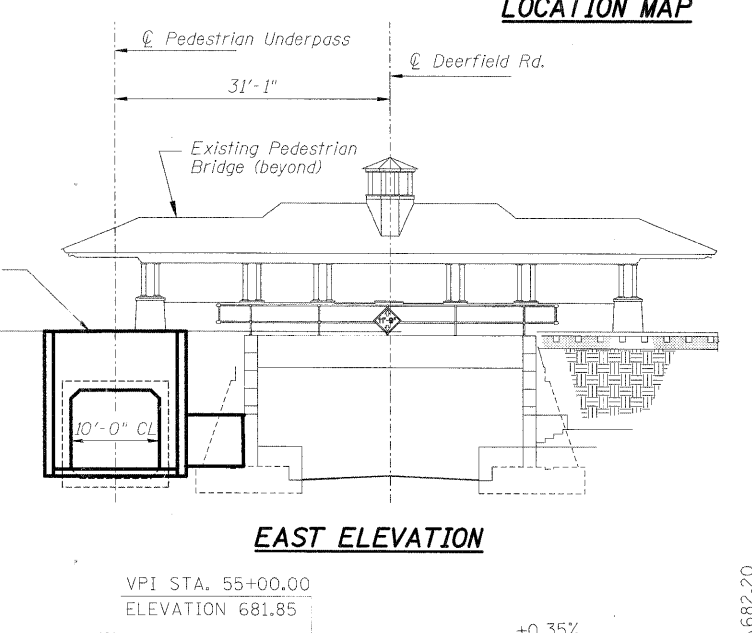
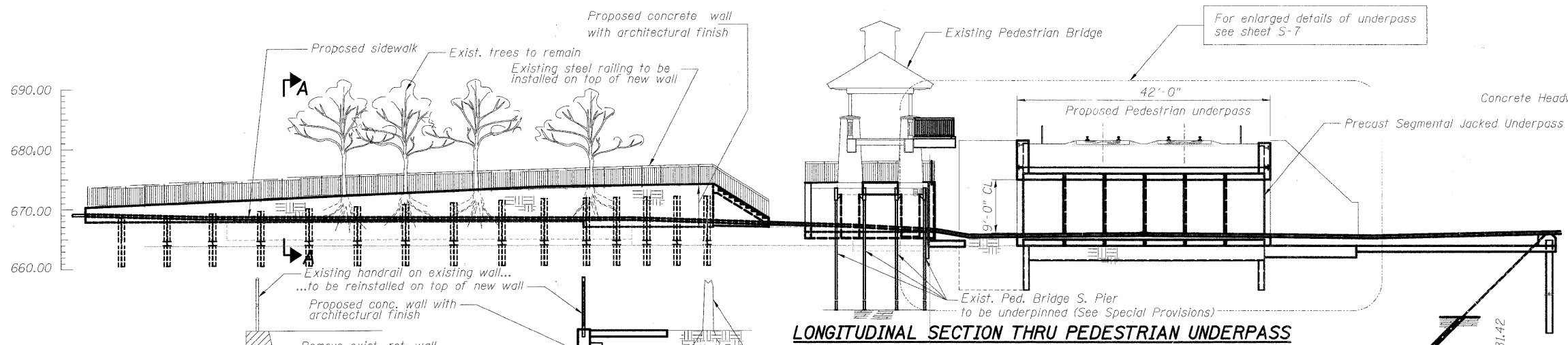
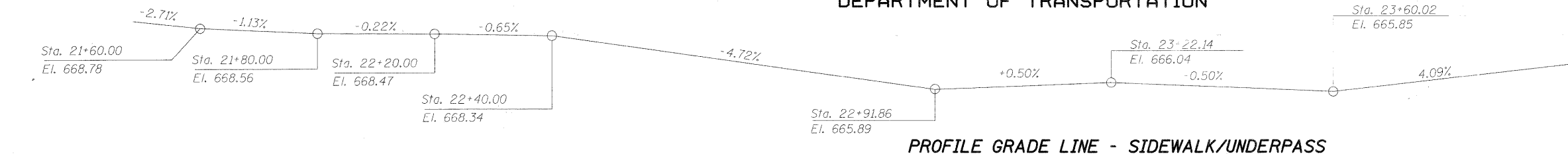
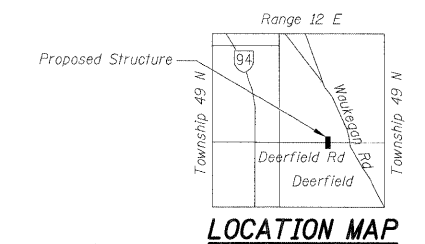


BENCHMARK "BM-1": Cut X on N.E. bolt of hydrant at N.E. corner of Deerfield and Park = Elev. 670.80

STATE OF ILLINOIS
DEPARTMENT OF TRANSPORTATION



PEDESTRIAN UNDERPASS
BUILT BY
VILLAGE OF DEERFIELD
LAKE COUNTY
SECTION 08-00083-00-BT
F.A.U. RT. 1257 STA 23+22
STR. NO. 049-6159 LOADING E-80

NAME PLATE
See Std. 515001

**LOADING COOPER E-80 OR
ALTERNATE LIVE LOADING
DESIGN SPECIFICATIONS**
2005 AREMA Specifications

DESIGN STRESSES
FIELD UNITS
 $f_c = 4,000$ psi
 $f_y = 60,000$ psi (Reinforcement)
 $f_y = 36,000$ psi (Structural Steel)
 $f_y = 150,000$ psi (Bar Tendons)

PRECAST UNITS
 $f_c = 5,000$ psi
SEISMIC DATA
Seismic Performance Category (SPC) = A
Bedrock Acceleration Coefficient (A) = 0.037g
Site Coefficient (S) = 1.0

**GENERAL PLAN AND ELEVATION
DEERFIELD ROAD PEDESTRIAN UNDERPASS
UNDER METRA NORTH LINE
SECTION 08-00083-00-BT
LAKE COUNTY
STRUCTURE NO. 049-6159**

DESIGNED	KJH
CHECKED	BB
DRAWN	KJH
CHECKED	AWW

PI Sta 22+99.41
N=9,939.06
E=10,329.32

PLAN

McDonough Associates Inc.
Engineers / Architects
130 East Randolph Street Chicago, Illinois 60601

SHEET NO. S-1 SHEETS S-25	F.A.U. RTE.	SECTION	COUNTY	TOTAL SHEETS	SHEET NO.
	1257	08-00083-00-BT	LAKE	51	21
	SN 049-6159			CONTRACT NO. 63450	
FED. ROAD DIST. NO. 1 ILLINOIS FED. AID PROJECT					