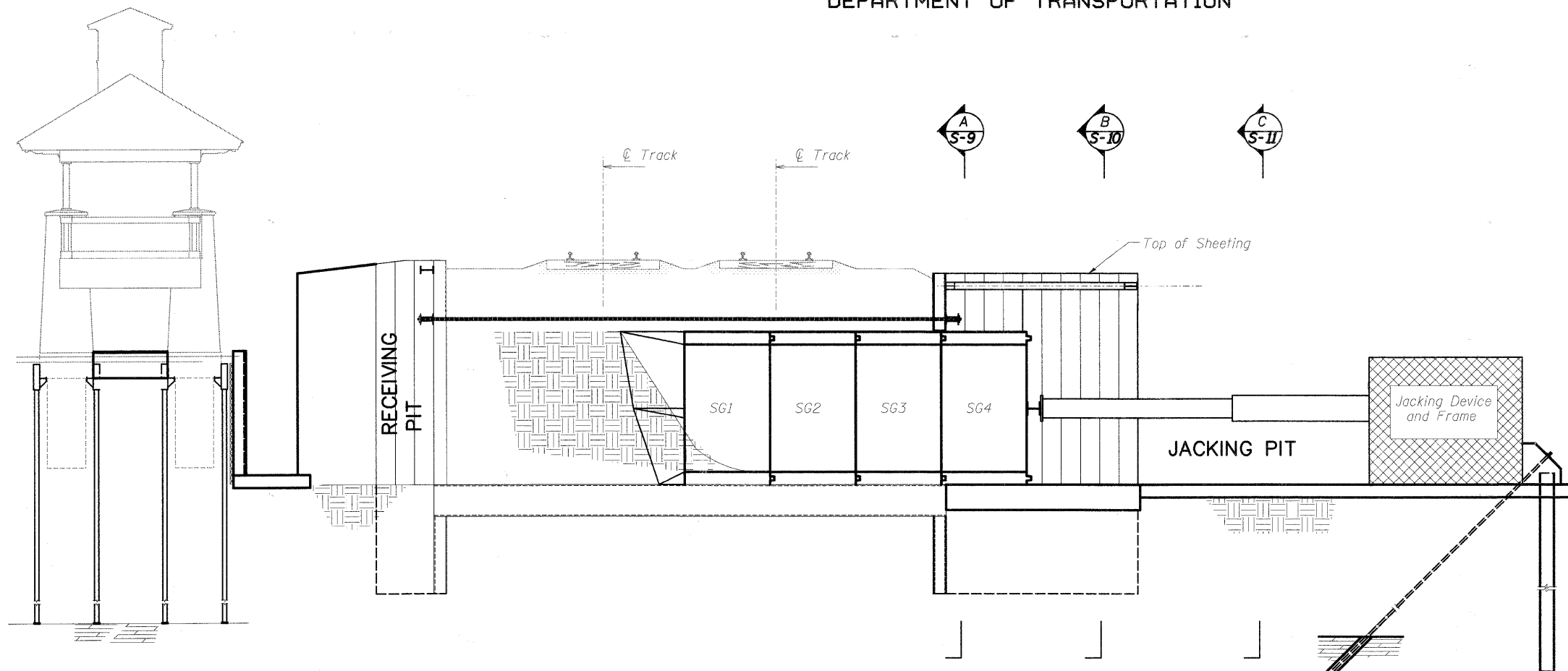


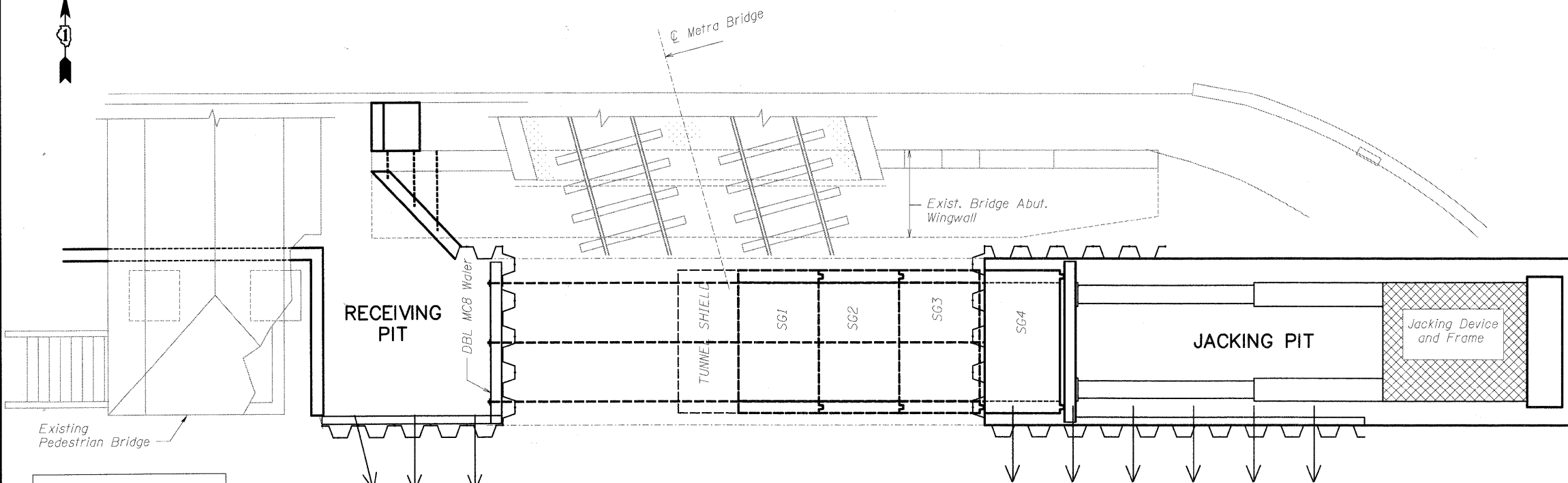
STATE OF ILLINOIS  
DEPARTMENT OF TRANSPORTATION

**STAGED NOTES (S-6)**

1. After installation of precast segments remove jacking equipment and anchor used for jacking.
2. Pour concrete facing.
3. Cut remaining frames from wall face.



**SECTION - TUNNEL CONSTRUCTION - TYPICAL STAGE**



**PLAN - TUNNEL CONSTRUCTION - TYPICAL STAGE**

DESIGNED	KJH
CHECKED	BB
DRAWN	KJH
CHECKED	AWW

**CONSTRUCTION STAGING-TYPICAL STAGE  
STRUCTURE NO. 049-6159**

**McDonough Associates Inc.**  
Engineers / Architects  
130 East Randolph Street Chicago, Illinois 60601

SHEET NO. S-6 SHEETS S-25	F.A.U. RTE. 1257	SECTION 08-00083-00-BT	COUNTY LAKE	TOTAL SHEETS 51	SHEET NO. 26
	SN 049-6159		CONTRACT NO. 63450		
FED. ROAD DIST. NO. 1		ILLINOIS	FED. AID PROJECT		