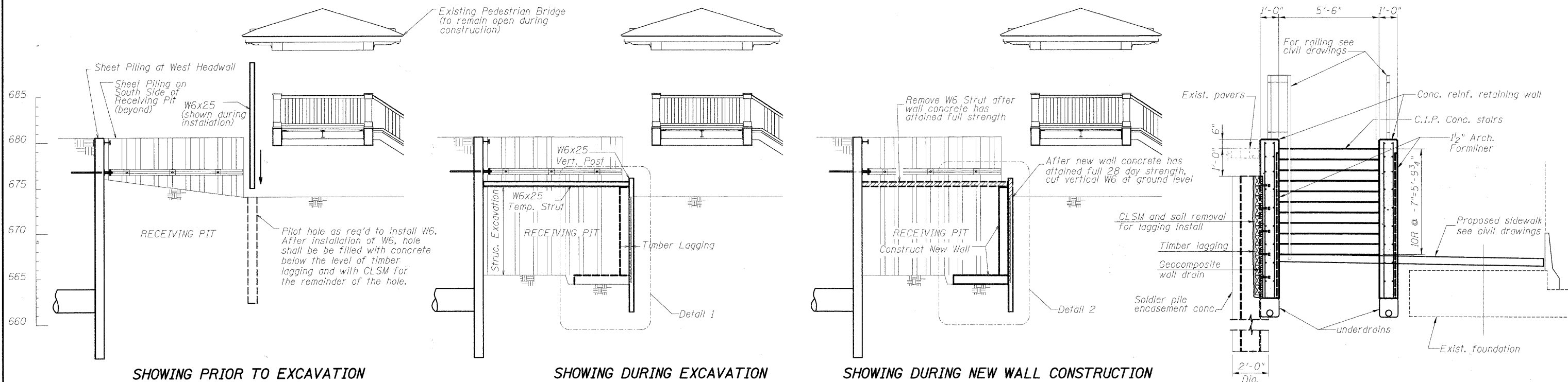


STATE OF ILLINOIS
DEPARTMENT OF TRANSPORTATION



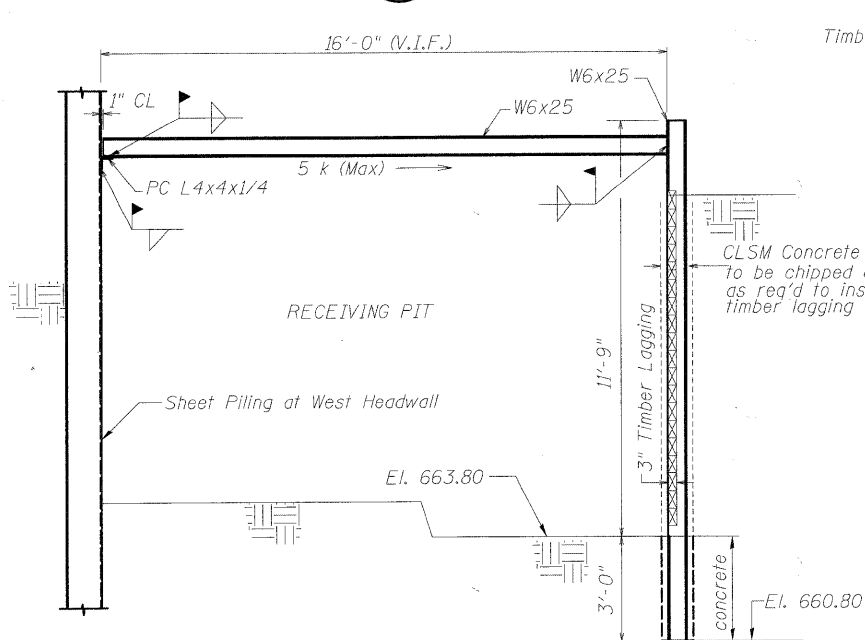
SHOWING PRIOR TO EXCAVATION

SHOWING DURING EXCAVATION

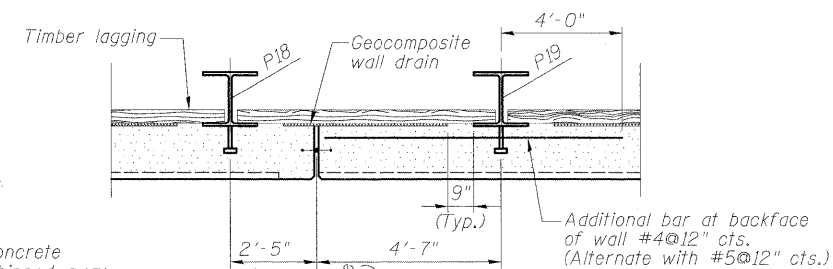
SHOWING DURING NEW WALL CONSTRUCTION

A SECTION-SHOWING PORTION OF WALL IN RECEIVING PIT

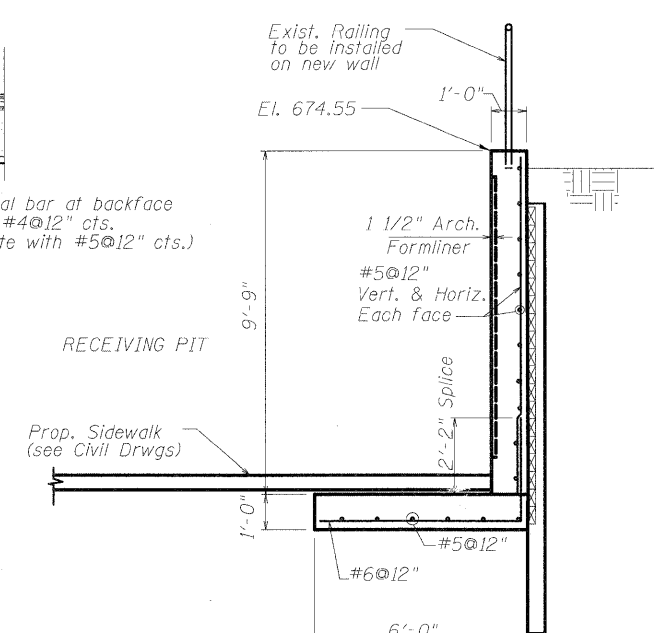
E SECTION - THRU STAIR



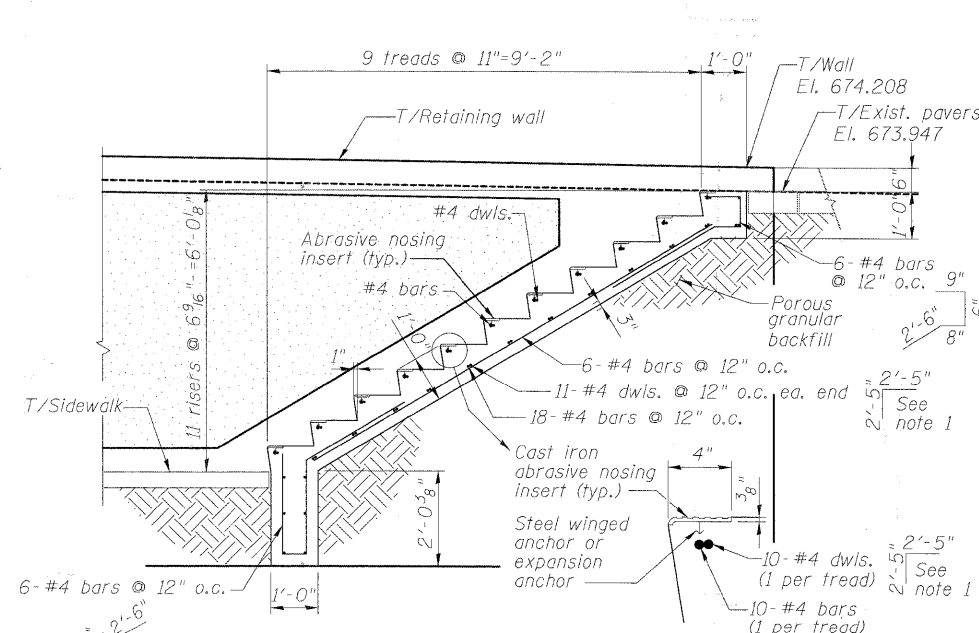
1 DETAIL-SHOWING EXCAVATION



3 DETAIL



2 DETAIL-SHOWING WALL CONSTRUCTION



C SECTION - THRU STAIR

Note 1:
The Contractor may utilize bar couplers, to splice the horizontal stairway bars to the wall reinforcement, instead of using dowels.

WALL DETAILS
STRUCTURE NO. 049-6159

DESIGNED	KJH
CHECKED	BB
DRAWN	KJH
CHECKED	-AWW

McDonough Associates Inc.
Engineers / Architects
130 East Randolph Street Chicago, Illinois 60601

SHEET NO.	F.A.U. RTE.	SECTION	COUNTY	TOTAL SHEETS	SHEET NO.
S-14	1257	08-00083-00-BT	LAKE	51	34
SHEETS	SN 049-6159		CONTRACT NO. 63450		
S-25	FED. ROAD DIST. NO. 1 ILLINOIS		FED. AID PROJECT		