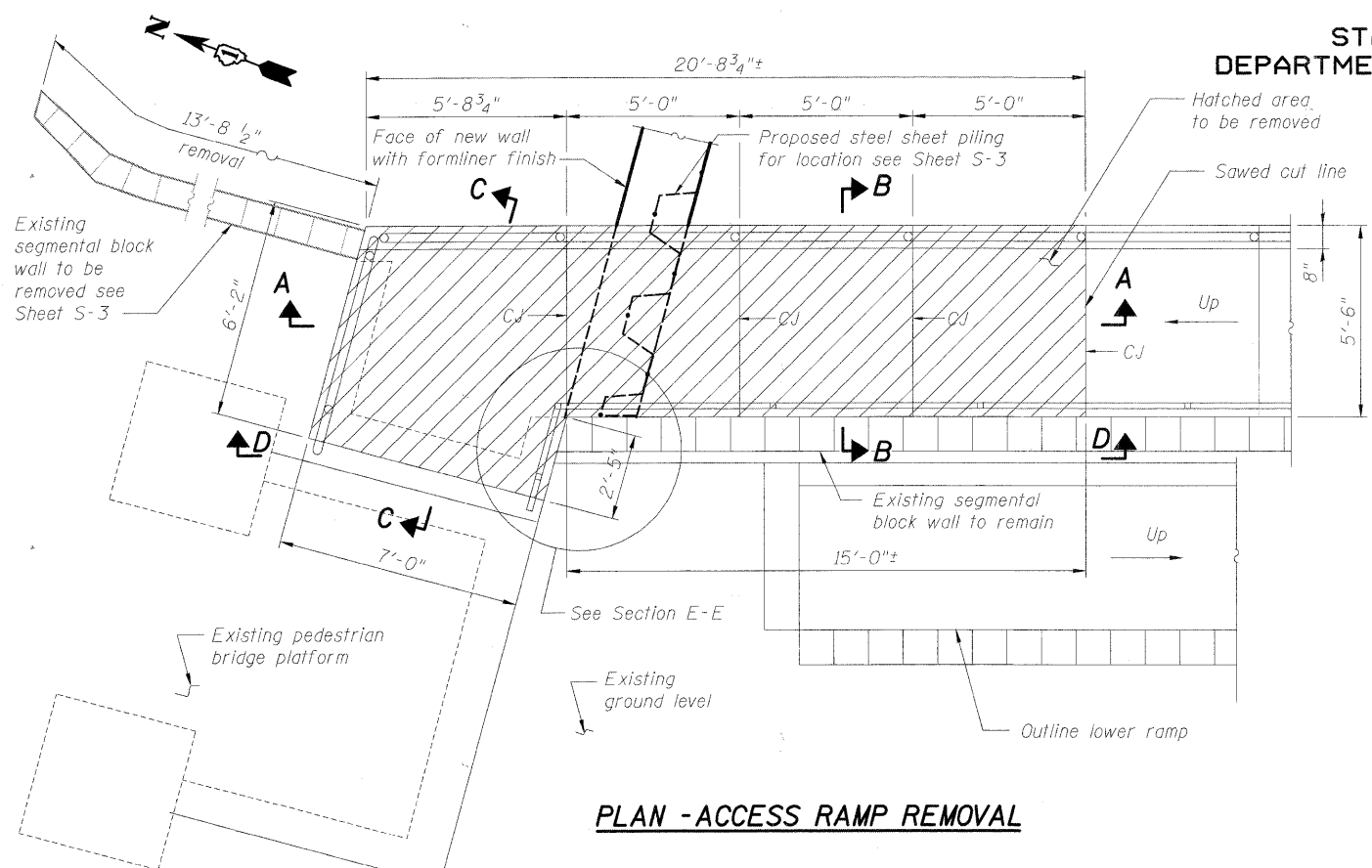
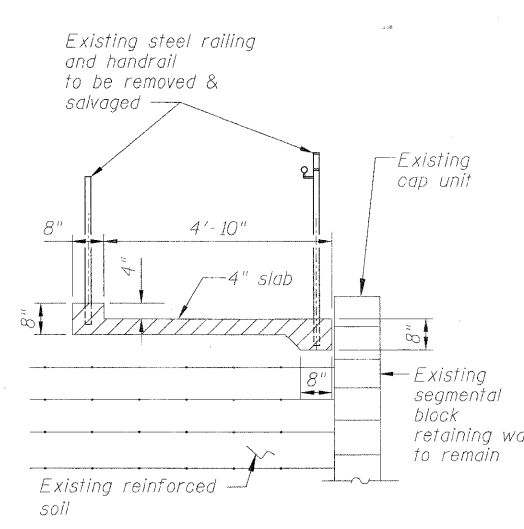


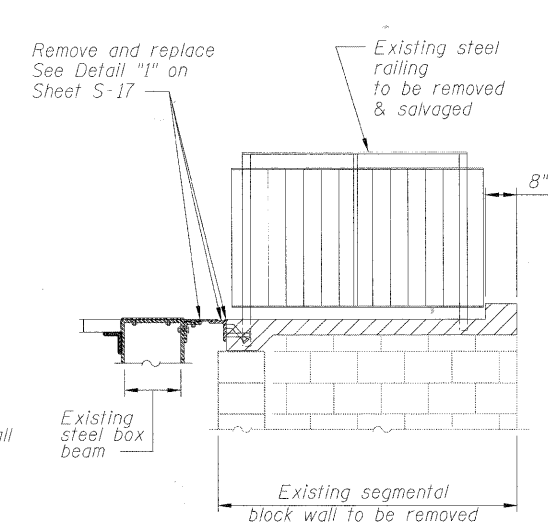
STATE OF ILLINOIS  
DEPARTMENT OF TRANSPORTATION



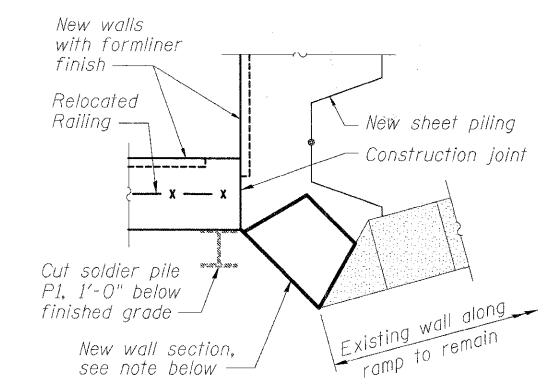
**PLAN - ACCESS RAMP REMOVAL**



**SECTION B-B**

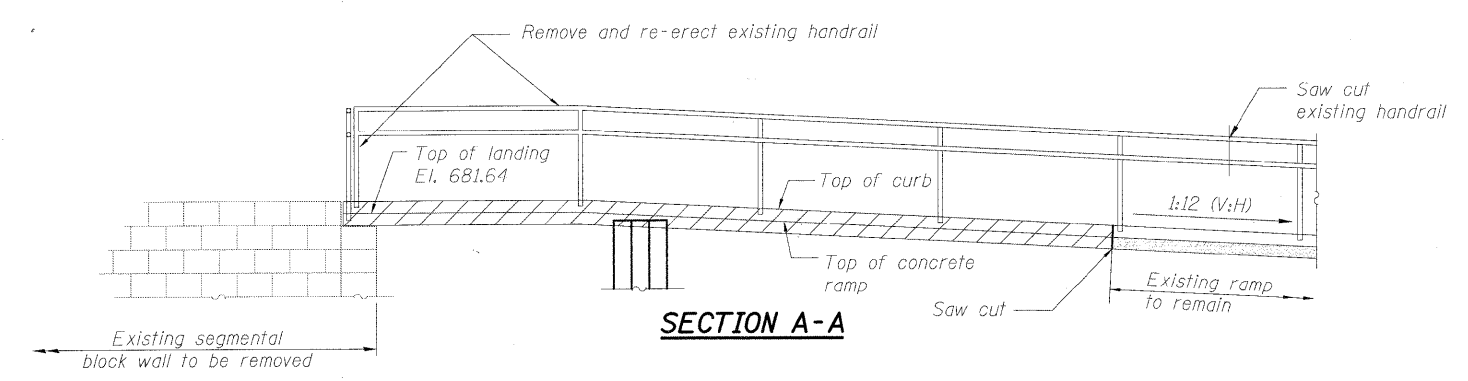


**SECTION C-C**

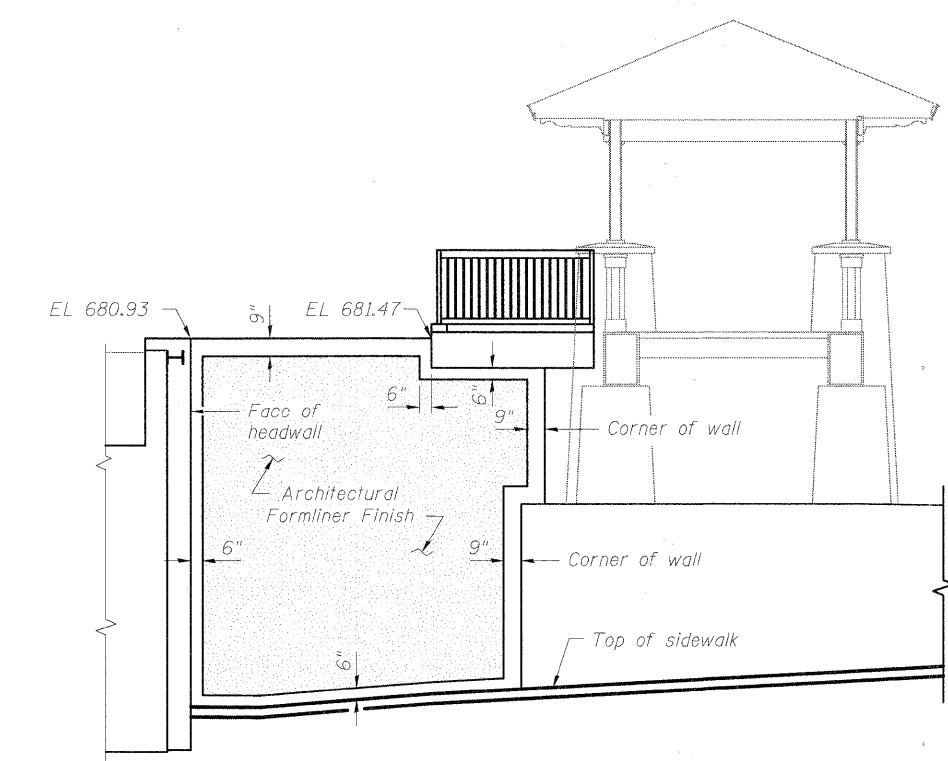


**SECTION E-E**

The contractor shall carefully remove a portion of the existing segmental concrete block wall, as required for the wall modification indicated on the plans. Upon completion of adjacent work, the segmental concrete block wall shall be restored to close potential gaps and provide a smooth transition between existing and new construction to the satisfaction of the engineer. Wall removal and modification shall be included in the item "Concrete Removal."

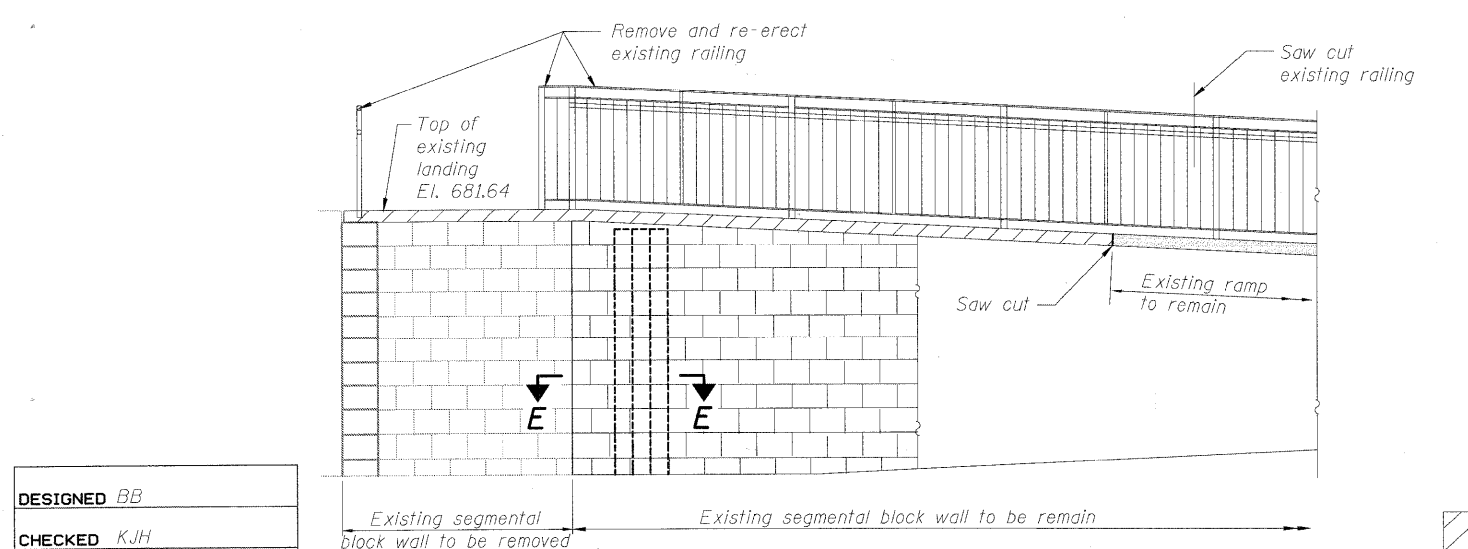


**SECTION A-A**

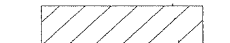


**SECTION H-H**

Note:  
For the location of Section H-H see Sheet S-7.



**SECTION D-D**

 Hatched area indicates concrete removal

DESIGNED	BB
CHECKED	KJH
DRAWN	RJ
CHECKED	AWW

**ACCESS RAMP MODIFICATIONS-REMOVAL  
STRUCTURE NO. 049-6159**

SHEET NO. S-16	F.A.U. RTE.	SECTION	COUNTY	TOTAL SHEETS	SHEET NO.
	1257	08-00083-00-BT	LAKE	51	36
SHEETS S-25	SN 049-6159		CONTRACT NO. 63450		
FED. ROAD DIST. NO. 1 ILLINOIS FED. AID PROJECT					

 **McDonough Associates Inc.**  
Engineers / Architects  
130 East Randolph Street Chicago, Illinois 60601