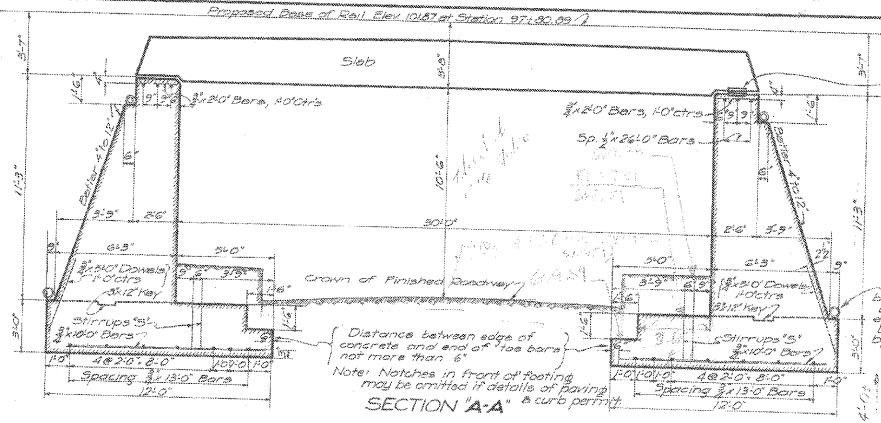


STATE OF ILLINOIS
DEPARTMENT OF TRANSPORTATION

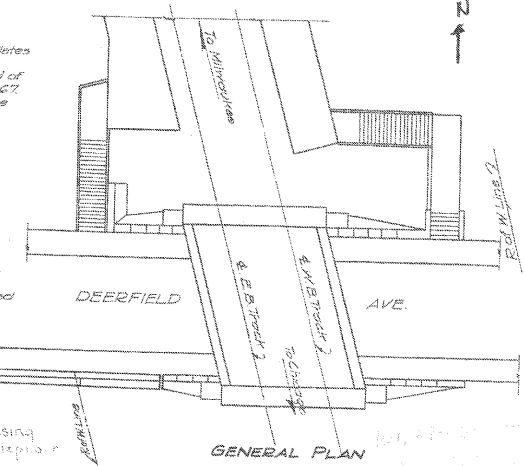


Note: Erector may place Notches & Plates P1 in either abutment. For details of free end bearing and of Plates P1, see Drawing No. D-4367. Plates P1 should be placed with the curb side down.

For details of notch for parapet see Drg No. D-4367.

Drains to be placed at top and bottom of newwork as shown. Lower drains to be carried around ends of through wings. Disposal of drainage to be determined by Engr-in-Charge.

Note: Notches in front of footing may be omitted if details of paving are provided.



Revised 10/29/14 ACC. C.S.C. 11/29/14 C.H.C.

No.	Size	Length	Description
14	20"	X	Longitudinals
22	18"	X	"
187	10"	0	Toe Bars
56	12"	6	Stirrups 5'
54	8"	0	Dowels
68	4"	0	"
7	5"	6	Longitudinals
4	18"	X	" (SW Ret Wall)
29	8"	6	Transverse "
14	8"	0	Dowels
66	8"	0	Bars under Bridge Seat
6	24"	X	Longitudinals
12	16"	0	"
Slabs See Drg. D-4367			

Every bar is to be a deformed bar with effective section equivalent to that of a square with side equal to size given.

All bars may, overruled, be length not to exceed two inches.

Bars marked 'X' may be applied.

Splices of bars must lap 24"

GENERAL NOTES

Location: Deerfield Avenue Crossing - just south of depot - Deerfield, Illinois.

Drawing No. of Survey: D-3762

Block Mark: Door S/1, E.B. Bleimehl Saloon - 200' South of Depot - Elev. 100.00.

Proposed Base of Rail: Elev. 101.87 at Sta. 97+50.89

Grade: Level

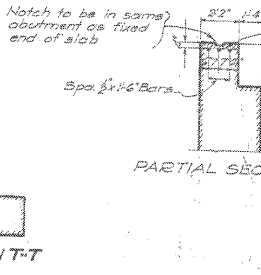
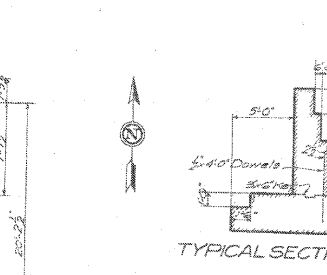
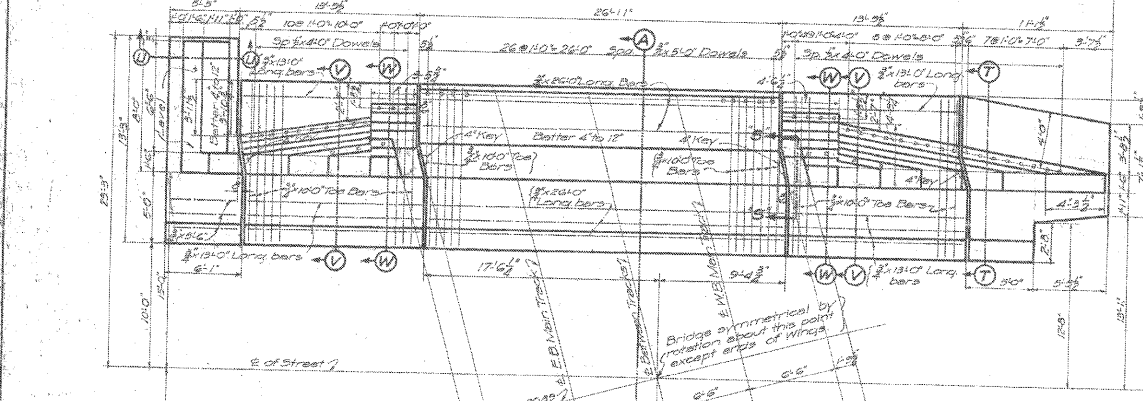
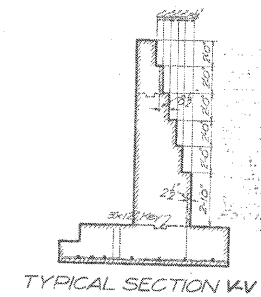
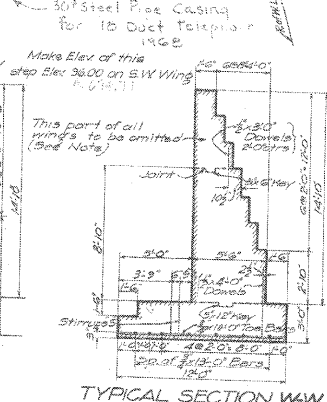
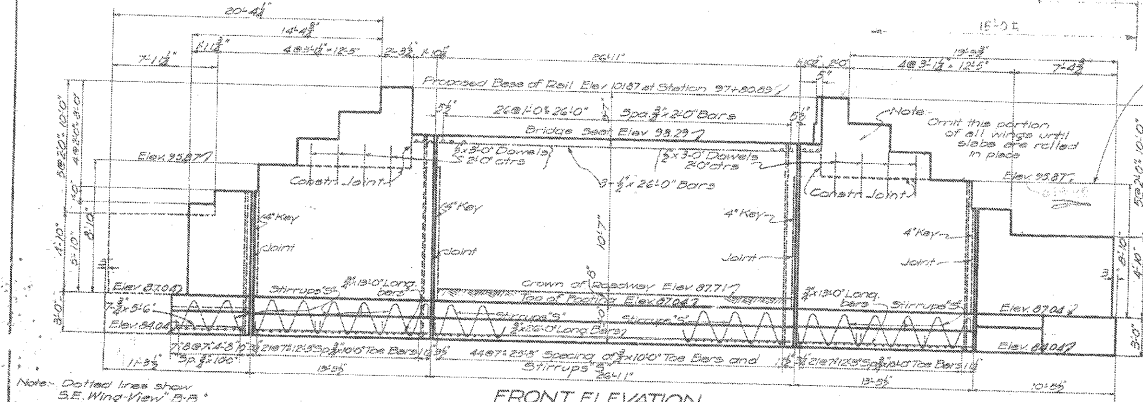
Alignment: Tangent

Bearing on Soil: 125 tons per sq. ft.

Foundation: See Drawing No. D-4377.

For Details of Slabs see Drawing No. D-4367.

Station 97+82.0 at intersection of E. of St. and gauge line North Rail of E.B. Track.



CONSTRUCTION NOTES

Footings: No horizontal joints. No vertical joints except as shown.

Newwork: No vertical or horizontal joints except as shown.

All projecting edges and vertical joints which will be visible after fill to be made are to be finished with 1" V strips.

Foundations may be altered by Engr-in-Charge.

CONCRETE		
Mixture	1:2:4	1:3:3
Abutments	Footings	5%
	Newwork	5%
Hinge & Ret. Wall	Footings	10%
	Newwork	10%
Slabs and Parapets	5%	5%
Total	22%	47%
Grand Total 56 @ Cuts		

Note: For details of South West retaining wall, see Drg. D-4226.

Order	Officer	Initials
1	Engr. in Charge	
2	Chief Engineer	
3	Chief Engineer	

C.M. & ST. P.R.Y.
ENGINEERING DEPARTMENT
A-118³ DEERFIELD AVENUE SUBWAY
Deerfield, Illinois.
NEATWORK AND FOOTINGS
Chicago Nov. 7, 1913. Drawing No. D-4366
Correct. Approved: [Signature]

FOR INFORMATION ONLY
STRUCTURE NO. 049-6159

SHEET NO.	F.A.U. RTE.	SECTION	COUNTY	TOTAL SHEETS	SHEET NO.
S-23	1257	08-00083-00-BT	LAKE	51	43
S-25		SN 049-6159			
FED. ROAD DIST. NO. 1 ILLINOIS FED. AID PROJECT					

McDonough Associates Inc.
Engineers / Architects
130 East Randolph Street Chicago, Illinois 60601