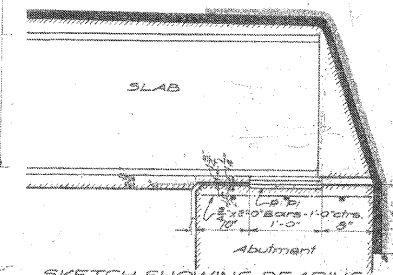
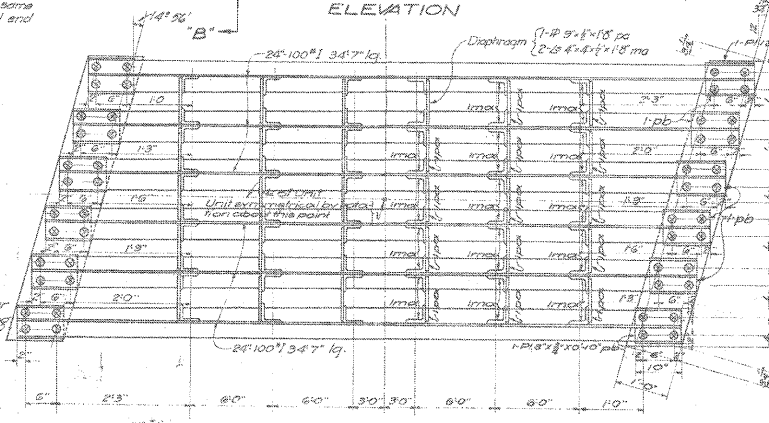
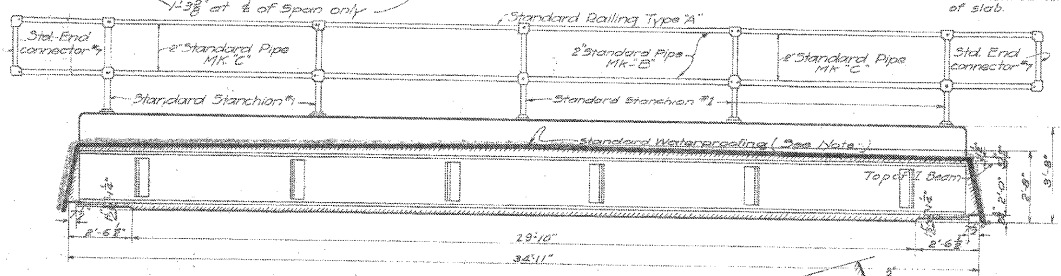
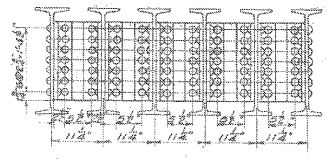
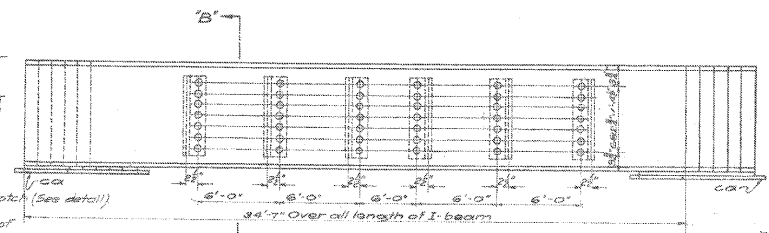
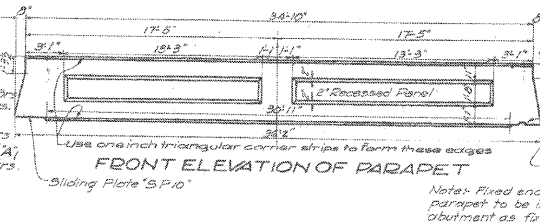
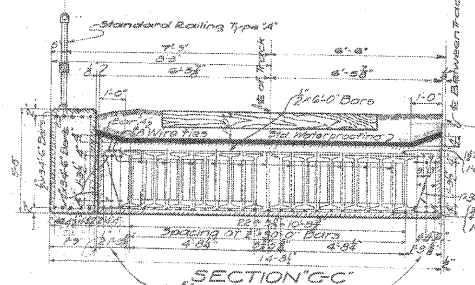
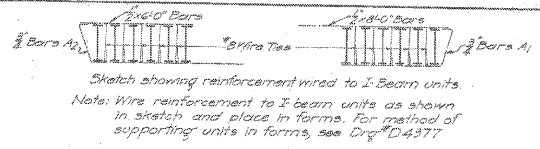


STATE OF ILLINOIS
DEPARTMENT OF TRANSPORTATION

Revised 10/29/14
11/20/14
ACC.
C.C.C.

Note: At each intersection of Lower bars they are to be wired to upper transverse bars with wire, making ties at 10-cfs. on each long bottom bar. See Sketch.



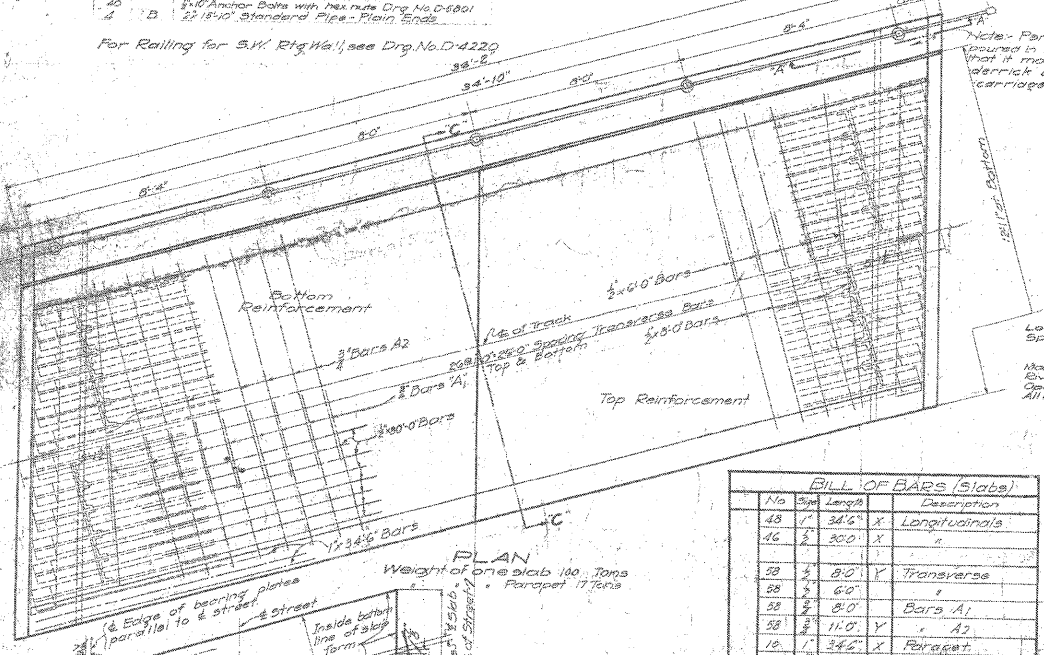
BILL OF MATERIAL FOR RAILING

No.	Material	Description
10	#1	Main structure - Dwg. No. D-5000
4	#7	End connectors
8	#1	Standard pipe - Plain Ends
32	#10	Standard pipe - Plain Ends
20	#10	Standard pipe - Plain Ends
4	#10	Standard pipe - Plain Ends

For Railing for S.W. Rtg. Wall, see Drg. No. D-4220



Note: Parapet is to be placed in such position that it may be lifted in slings with derrick and placed on carriages near final position.

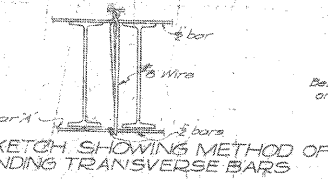


BILL OF BARS (Slabs)

No.	Size	Length	Description
48	7	34'-6"	Longitudinals
46	8	30'-0"	"
28	2	8'-0"	Transverse
28	2	6'-0"	"
28	2	8'-0"	Bars A1
28	2	11'-0"	Bars A2
18	1	34'-6"	Parapet
10	2	34'-6"	"

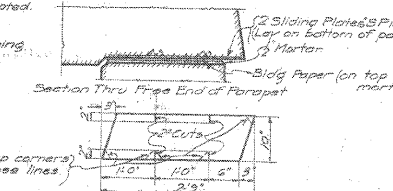
GENERAL STEEL NOTES

Loading: 12-55 with boiler floor. Impact 50%
Specifications: C.M. & S.P. By Engineering Department
For Design: March 1912
For Material: same relationship July 1911, except point as noted.
Material: Steel
Welds: 70 Cupometer
Open holes: 1/2" Dia. unless specified as noted.
All holes shall be punched. The diameter shall be punched & reaming.
NOT required.

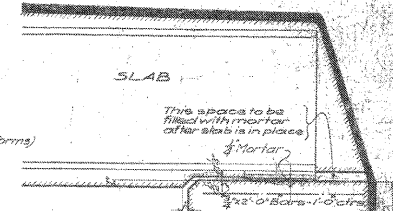
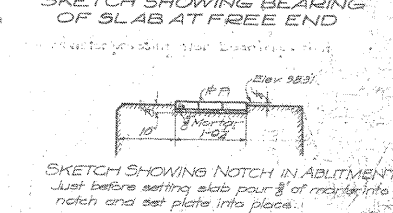


Note: Bottom of Slabs to be mortar 1/2" apart cement 1/2" port sand.

Note: Holes may be punched out with 1/2" punch a left unfinished. Plate must be carefully straightened after punching.



Note: For Details of Waterproofing see Drg. D-5000. Engr. in charge to determine necessity for waterproofing.



This space to be filled with mortar after slab is in place.

Note: For Details of Waterproofing see Drg. D-5000. Engr. in charge to determine necessity for waterproofing.

AFE 2358

C.M. & S.P.R.Y.
ENGINEERING DEPARTMENT
A-118 3/4 DEERFIELD AVENUE, SUBWAY
Dearfield, Ill.
SLAB DETAILS
Chicago, Aug. 9, 1913
Contract No. 049-6159

FOR INFORMATION ONLY
STRUCTURE NO. 049-6159

McDonough Associates Inc.
Engineers / Architects
130 East Randolph Street Chicago, Illinois 60601

SHEET NO.	F.A.U. RTE.	SECTION	COUNTY	TOTAL SHEETS	SHEET NO.
S-24	1257	08-00083-00-BT	LAKE	51	44
SHEETS	SN 049-6159		CONTRACT NO. 63450		
S-25	FED. ROAD DIST. NO. 1 ILLINOIS		FED. AID PROJECT		