

PROP. CURVEPR_PATH-1
 PI STA. =12+31.62
 $\Delta = 5^\circ 15' 11''$ (RT)
 $D = 57^\circ 17' 45''$
 $R = 100.00'$
 $T = 4.59'$
 $L = 8.75'$
 $E = 0.11'$
 $e = (2.0\%)$
 T.R. = N/A
 S.E. RUN = N/A
 P.C. STA =12+27.04
 P.T. STA =12+35.79

PT# 200, NGS BM DK 3296
 SURVEY DISK SET IN CONC BASE OF LIGHTPOLE
 @ SE CORNER OF PLAINFIELD AND MADISON ST
 ELEVATION+732.18 NAVD88

- PCC SIDEWALK 5 INCH, 62 SQ FT
 - AGGREGATE BASE COURSE, TYPE B 6", 7 SQ. YD.

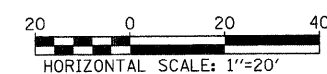
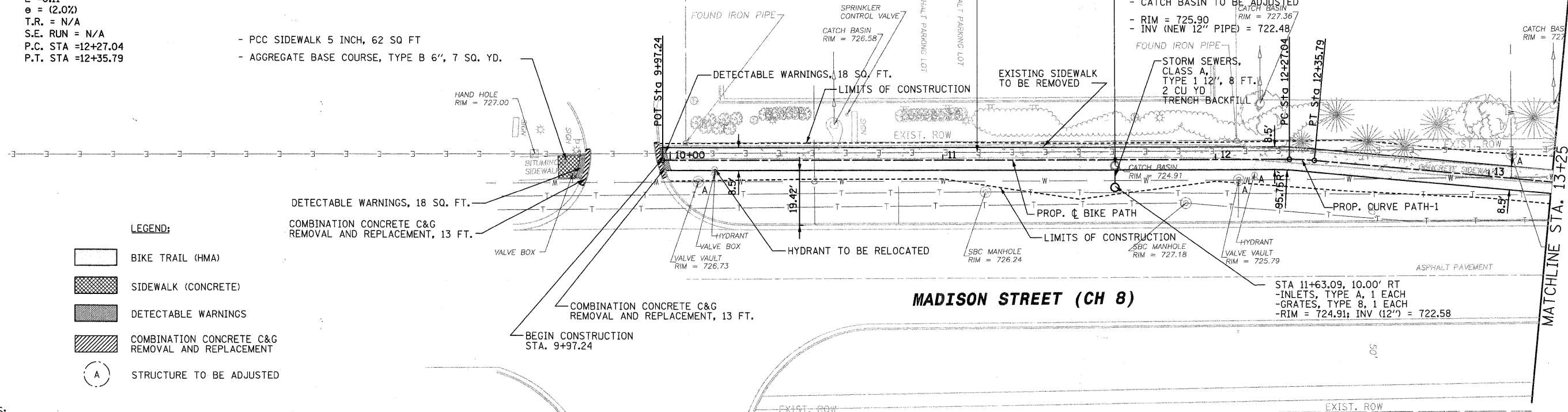
- HOT-MIX ASPHALT SURFACE COURSE, MIX "C", N50, 36 TONS
 - BITUMINOUS MATERIALS (PRIME COAT), 162 GAL.
 - AGGREGATE BASE COURSE, TYPE B 6", 324 SQ. YD.

DATE	
BY	
PLAN	
NO.	
DATE	
BY	
PROF.	
NO.	

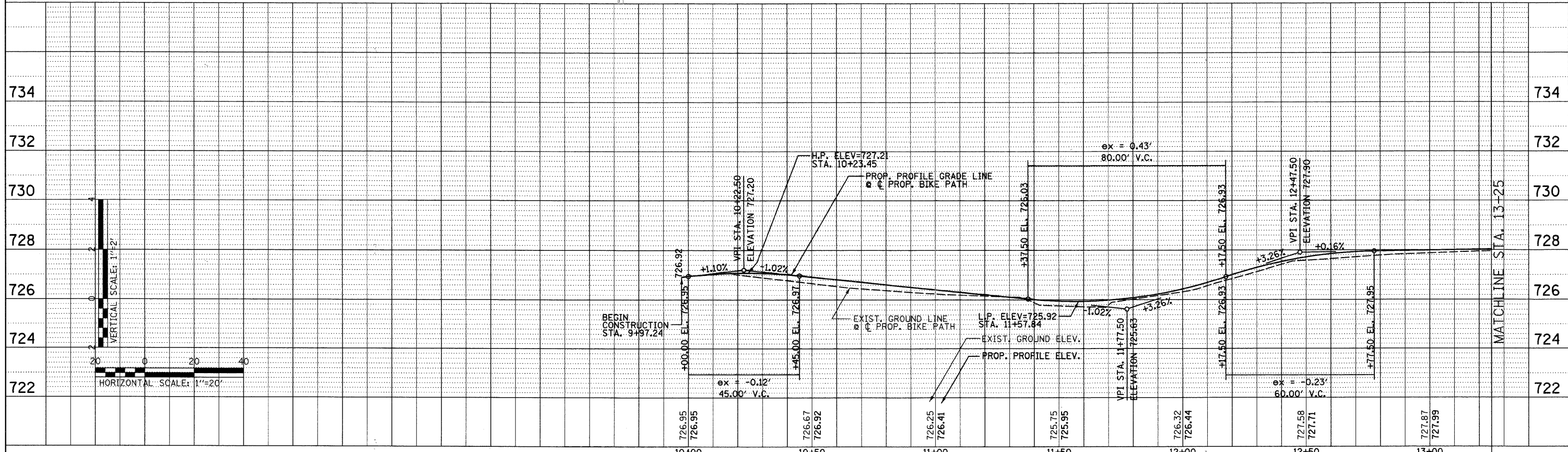
- LEGEND:**
- BIKE TRAIL (HMA)
 - SIDEWALK (CONCRETE)
 - DETECTABLE WARNINGS
 - COMBINATION CONCRETE C&G REMOVAL AND REPLACEMENT
 - STRUCTURE TO BE ADJUSTED

NOTES:

ALL EXISTING SIDEWALK THROUGHOUT THE PROPOSED BIKE PATH SHALL BE REMOVED. WORK PAID FOR AS SIDEWALK REMOVAL.
 ALL EXISTING PAVEMENT MARKING THAT CONFLICTS WITH PROPOSED PAVEMENT MARKING SHALL BE REMOVED. WORK PAID FOR AS PAVEMENT MARKING REMOVAL.



DATE	
BY	
PROF.	
NO.	
DATE	
BY	
PLAN	
NO.	



FILE NAME =	USER NAME = #USER#	DESIGNED - CRC	REVISED -	STATE OF ILLINOIS DEPARTMENT OF TRANSPORTATION	MADISON STREET (CH 8) BIKE PATH IMPROVEMENTS EXISTING AND PROPOSED PLAN	F.A.U. RTE. 2674	SECTION 07-00001-10-BT	COUNTY	TOTAL SHEETS 24	SHEET NO. 6	
#FILE#		DRAWN - ML	REVISED -			SCALE: 1" = 20'	SHEET NO. 1 OF 3 SHEETS	STA. 9+97.09	TO STA. 13+25	FED. ROAD DIST. NO.	ILLINOIS FED. AID PROJECT
		CHECKED - MPK	REVISED -								
		DATE - 03/12/2010	REVISED -								