

F.A.U. ROUTE	SECTION	COUNTY	TOTAL SHEETS	SHEET NO.
2411	10-00076-00-RS	KANE	16	1
CONTRACT NO. 63476				

FOR INDEX OF SHEETS SEE SHEET NO. 2

STATE OF ILLINOIS
DEPARTMENT OF TRANSPORTATION
DIVISION OF HIGHWAYS
PLANS FOR PROPOSED FEDERAL AID HIGHWAY
F.A.U. ROUTE 2411 (WESTERN AVENUE)
MCKEE STREET TO FABYAN PARKWAY
RESURFACING
SECTION: 10-00076-00-RS
PROJECT NO. ARA-9003(584)
CITY OF BATAVIA
KANE COUNTY
C-91-394-10

TRAFFIC DATA

ADT (2008) = 5880
 POSTED SPEED 30 MPH
 DESIGN SPEED 35 MPH

FUNCTIONAL CLASSIFICATION: COLLECTOR



LOCATION OF SECTION INDICATED THIS: - ■ -

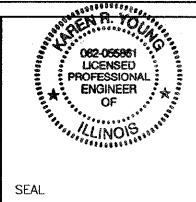
STATE OF ILLINOIS
 DEPARTMENT OF TRANSPORTATION
 DIVISION OF HIGHWAYS

APPROVED: 5/26/10
Nell Baugni
 CITY ENGINEER

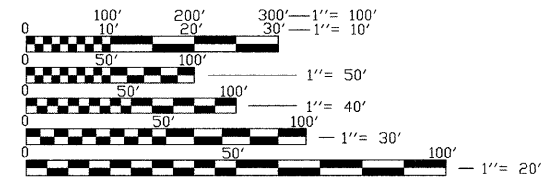
PASSED: MAY 27, 2010
Chris Hertz
 BUREAU CHIEF OF LOCAL ROADS AND STREETS

RELEASING FOR BID
 BASED ON LIMITED REVIEW: MAY 26, 2010
Diane M. O'Keefe
 DEPUTY DIRECTOR OF HIGHWAYS, REGION #1 ENGINEER

DATE: 5/26/10
 BY: *Karen R. Young*
 KAREN R. YOUNG, P.E.
 REGISTERED P.E. STATE OF ILLINOIS
 LICENSE EXPIRES: NOVEMBER 30, 2011



**PRINTED BY THE AUTHORITY
 OF THE STATE OF ILLINOIS**

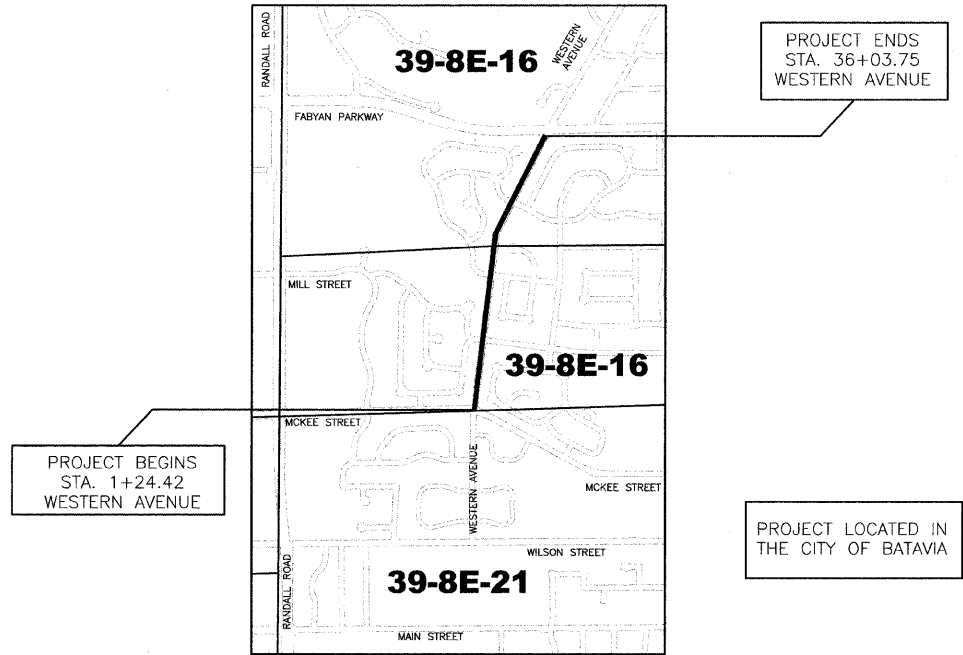


FULL SIZE PLANS HAVE BEEN PREPARED USING STANDARD ENGINEERING SCALES. REDUCED SIZED PLANS WILL NOT CONFORM TO STANDARD SCALES. IN MAKING MEASUREMENTS ON REDUCED PLANS, THE ABOVE SCALES MAY BE USED.

J.U.L.I.E.
 JOINT UTILITY LOCATION FOR EXCAVATION
 1-800-892-0123

 I.D.O.T. BUREAU OF TRAFFIC
 MEADE ELECTRIC
 1-773-287-7672

 KANE COUNTY DEPARTMENT OF TRANSPORTATION
 1-630-208-3130



LOCATION MAP
 N.T.S.

PROJECT LOCATION = TOWNSHIP 39 NORTH,
 RANGE 8 EAST, BATAVIA TOWNSHIP, 3RD P.M.
 GROSS LENGTH OF PROJECT = 3,479.33 FEET (0.66 MILES)
 NET LENGTH OF PROJECT = 3,479.33 FEET (0.66 MILES)

FIELD ENGINEER: MARILYN SOLOMON, P.E. (847) 705-4407

Stream:STR_10_004_Western_Ave.dwg(01_DWG_VER_MAR) PLOTTED: Wednesday, 26 May 2010 - 5:19pm SAVED: Tuesday, 25 May 2010 - 4:57pm

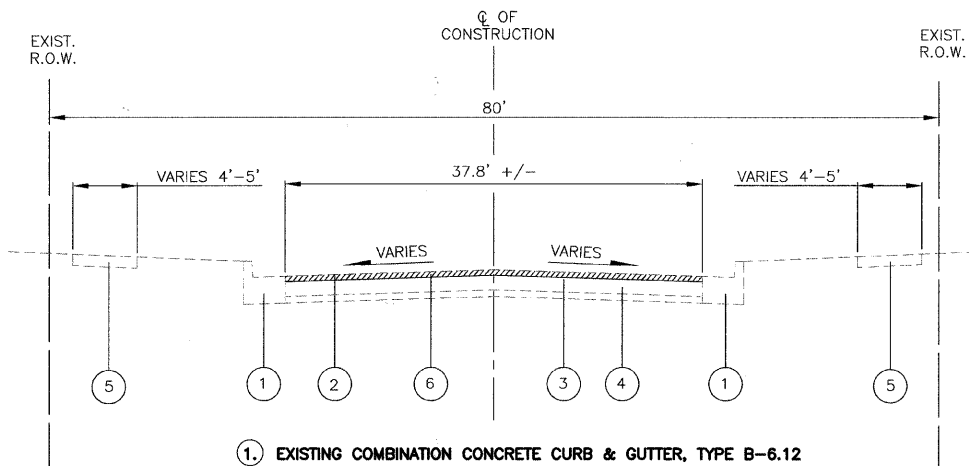
CONTRACT NO. 63476

**SUMMARY OF QUANTITIES
CONSTRUCTION TYPE CODE I000**

CODE	PAY ITEM DESCRIPTION	UNIT	TOTAL QUANTITY
40300100	BITUMINOUS MATERIALS (PRIME COAT)	GALLON	1566
40600300	AGGREGATE (PRIME COAT)	TON	2
40600625	LEVELING BINDER (MACHINE METHOD), N50	TON	348
40600982	HOT-MIX ASPHALT SURFACE REMOVAL - BUTT JOINT	SQ YD	206
40603335	HOT-MIX ASPHALT SURFACE COURSE, MIX 'D', N50	TON	1755
S 42400200	PORTLAND CEMENT CONCRETE SIDEWALK 5 INCH	SQ FT	1334
42400800	DETECTABLE WARNINGS	SQ FT	176
44000198	HOT-MIX ASPHALT SURFACE REMOVAL, VARIABLE DEPTH	SQ YD	15662
44000500	COMBINATION CURB AND GUTTER REMOVAL	FDDT	1010
44201701	CLASS D PATCHES, TYPE I 5 INCH	SQ YD	50
44201705	CLASS D PATCHES, TYPE II 5 INCH	SQ YD	50
44201709	CLASS D PATCHES, TYPE III 5 INCH	SQ YD	75
44201711	CLASS D PATCHES, TYPE IV 5 INCH	SQ YD	75
44000600	SIDEWALK REMOVAL	SQ FT	1303
60300105	FRAMES AND GRATES TO BE ADJUSTED	EACH	13
S 60300205	FRAMES AND GRATES TO BE ADJUSTED (SPECIAL)	EACH	3
S 60603800	COMBINATION CONCRETE CURB AND GUTTER, TYPE B-6.12	FDDT	1010
67100100	MOBILIZATION	L SUM	1
S 70102620	TRAFFIC CONTROL AND PROTECTION, STANDARD 701501	L SUM	1
S 70102630	TRAFFIC CONTROL AND PROTECTION, STANDARD 701601	L SUM	1
S 70102635	TRAFFIC CONTROL AND PROTECTION, STANDARD 701701	L SUM	1
S 70102640	TRAFFIC CONTROL AND PROTECTION, STANDARD 701801	L SUM	1
70300100	SHORT-TERM PAVEMENT MARKING	FDDT	1200
* 78000100	THERMOPLASTIC PAVEMENT MARKING - LETTERS AND SYMBOLS	SQ FT	186
* 78000200	THERMOPLASTIC PAVEMENT MARKING - LINE 4'	FDDT	7010
* 78000400	THERMOPLASTIC PAVEMENT MARKING - LINE 6'	FDDT	6684
* 78000600	THERMOPLASTIC PAVEMENT MARKING - LINE 12'	FDDT	876
* 78000650	THERMOPLASTIC PAVEMENT MARKING - LINE 24'	FDDT	203
S * X0325737	TEMPORARY TRAFFIC SIGNAL TIMING	EACH	3
44201670	CLASS D PATCHES, TYPE I 2 INCH	SQ YD	50
44201672	CLASS D PATCHES, TYPE II 2 INCH	SQ YD	50
44201674	CLASS D PATCHES, TYPE III 2 INCH	SQ YD	75
44201676	CLASS D PATCHES, TYPE IV 2 INCH	SQ YD	75
S X7011005	TRAFFIC CONTROL AND PROTECTION FOR TEMPORARY DETOUR	L SUM	1

* = DENOTES SPECIALTY ITEM
S = SPECIAL PROVISION

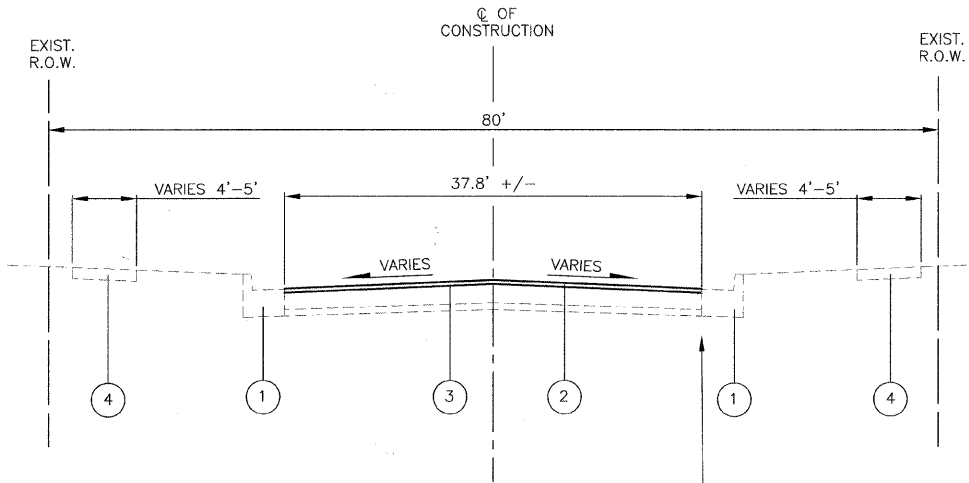
FILE NAME =	USER NAME =	DESIGNED -- KRY	REVISED -- 4/7/2010 PER IDOT	STATE OF ILLINOIS DEPARTMENT OF TRANSPORTATION	WESTERN AVENUE LAPP QUANTITY SHEET	F.A.U. RTE.	SECTION	COUNTY	TOTAL SHEETS	SHEET NO.	
		DRAWN -- KRY	REVISED -- 4/17/2010 PER IDOT			2411	10-00076-00-RS	KANE	16	3	
		CHECKED -- NAB	REVISED -- 5/26/10 PER IDOT			SCALE: NTS		SHEET NO. 3 OF 16 SHEETS		CONTRACT NO. 63476	
		DATE -- 4/7/2010	REVISED --			STA. TO STA.		ILLINOIS FED. AID PROJECT			



- ①. EXISTING COMBINATION CONCRETE CURB & GUTTER, TYPE B-6.12
- ②. EXISTING HOT-MIX ASPHALT SURFACE - 3.5" - 5"
- ③. EXISTING ROAD MIX - 1" - 2 1/4"
- ④. EXISTING AGGREGATE BASE - 12" - 13"
- ⑤. EXISTING PORTLAND CEMENT CONCRETE SIDEWALK
- ⑥. HOT-MIX ASPHALT SURFACE REMOVAL - VARIABLE DEPTH. 1 1/2" REMOVAL ALONG CURB & GUTTER TO 1" AT THE CENTERLINE.

EXISTING TYPICAL SECTION
WESTERN AVENUE
STA. 1+24.42 TO STA. 36+03.75

NOTE: SEE SHEETS 9 & 10 FOR PAVEMENT MARKING LIMITS



- ①. COMBINATION CONCRETE CURB & GUTTER, TYPE B-6.12
- ②. HOT-MIX SURFACE COURSE, MIX "D", N50, 2"
- ③. LEVELING BINDER (MACHINE METHOD), N50 - VARIABLE DEPTH (MAX 1" AT CENTERLINE TO 0" AT CURB LINE)
- ④. PORTLAND CEMENT CONCRETE SIDEWALK 5 INCH

PROPOSED TYPICAL SECTION
WESTERN AVENUE
STA. 1+24.42 TO STA. 36+03.75

NOTE: SEE SHEETS 9 & 10 FOR PAVEMENT MARKING LIMITS

HOT-MIX ASPHALT MIXTURE REQUIREMENTS

PAY ITEM DESCRIPTION	VOIDS
RESURFACING	
HOT-MIX ASPHALT SURFACE COURSE, MIX "D", N50 2" (IL-9.5MM)	4% @ 50
LEVELING BINDER (MACHINE METHOD), N50 (IL -9.5 MM)	4% @ 50
PATCHING	
CLASS D PATCHES (HMA BINDER IL-19MM) (SPECIAL)	4% @ 70

NOTES:

- 1. THE UNIT WEIGHT USED TO CALCULATE ALL HOT-MIX ASPHALT SURFACE MIXTURE QUANTITY IS 112 LBS/SY/IN.
- 2. THE "AC TYPE" FOR POLYMERIZED HMA MIXES SHALL BE "SBS/SBR PG 70-22" AND FOR NON-POLYMERIZED HMA, THE "AC TYPE" SHALL BE "PG 64-22" UNLESS MODIFIED BY DISTRICT ONE SPECIAL PROVISIONS. FOR "PERCENT OF RAP", SEE DISTRICT ONE SPECIAL PROVISIONS.
- 3. THE CONTRACTOR SHALL MILL BEFORE PATCHING.

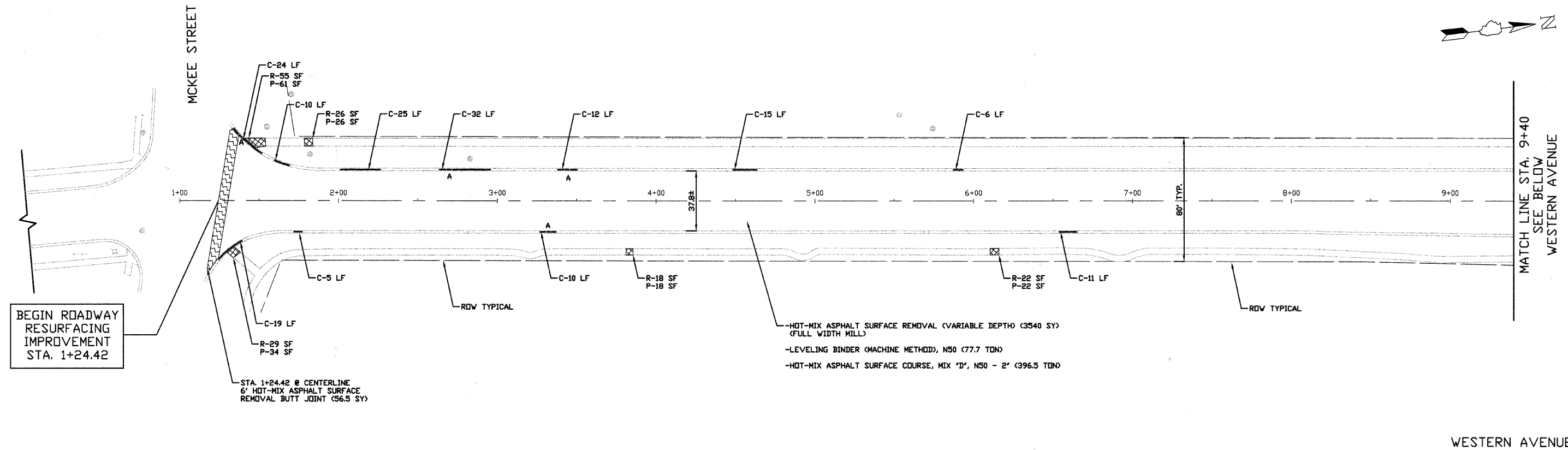
FILE NAME =	USER NAME =	DESIGNED - KRY	REVISED - 4/5/2010 PER IDOT
		DRAWN - KRY	REVISED - 4/17/2010 PER IDOT
	PLOT SCALE = N.T.S.	CHECKED - NAB	REVISED -
	PLOT DATE = 5/26/2010	DATE - 4/7/2010	REVISED -

STATE OF ILLINOIS
DEPARTMENT OF TRANSPORTATION

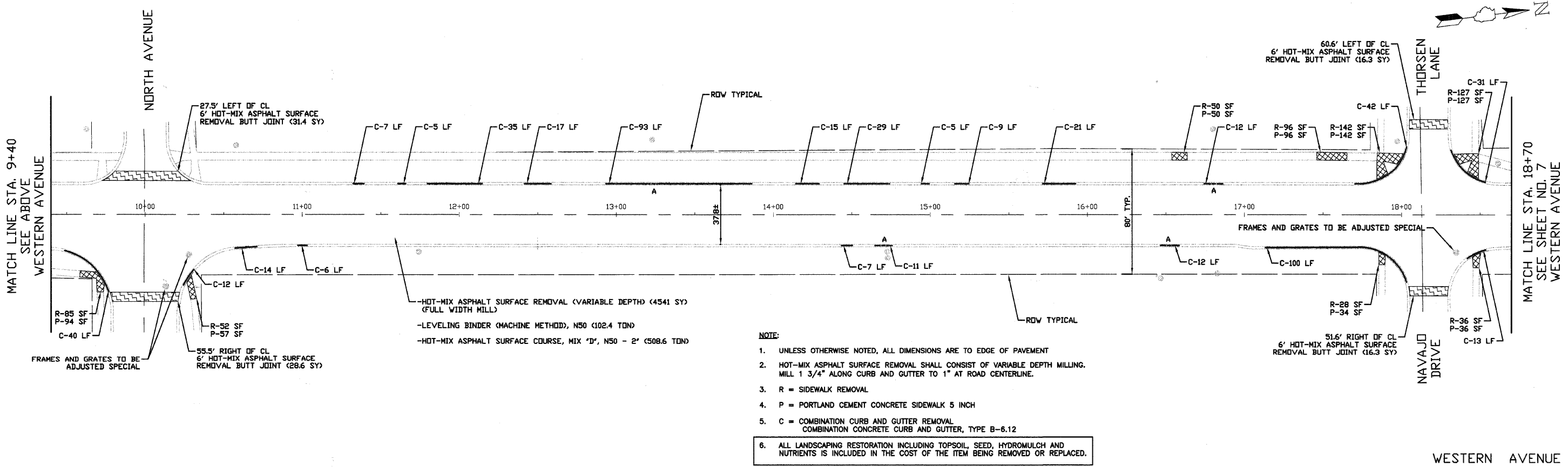
WESTERNA AVENUE LAPP
TYPICAL SECTIONS

F.A.U. RTE.	SECTION	COUNTY	TOTAL SHEETS	SHEET NO.
2411	10-00076-00-RS	KANE	16	4
CONTRACT NO.			63476	
ILLINOIS FED. AID PROJECT				

SCALE: N.T.S. SHEET NO. 4 OF 16 SHEETS STA. TO STA.



WESTERN AVENUE

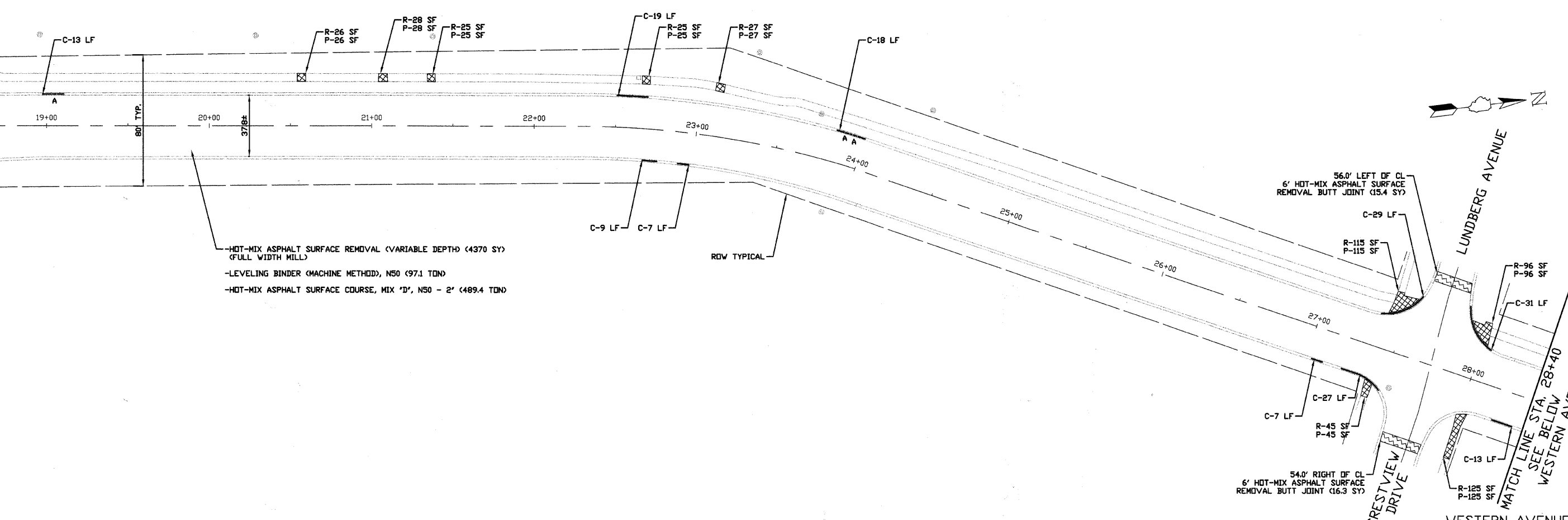


WESTERN AVENUE

- NOTE:
1. UNLESS OTHERWISE NOTED, ALL DIMENSIONS ARE TO EDGE OF PAVEMENT
 2. HOT-MIX ASPHALT SURFACE REMOVAL SHALL CONSIST OF VARIABLE DEPTH MILLING. MILL 1 3/4" ALONG CURB AND GUTTER TO 1" AT ROAD CENTERLINE.
 3. R = SIDEWALK REMOVAL
 4. P = PORTLAND CEMENT CONCRETE SIDEWALK 5 INCH
 5. C = COMBINATION CURB AND GUTTER REMOVAL
COMBINATION CONCRETE CURB AND GUTTER, TYPE B-6.12
 6. ALL LANDSCAPING RESTORATION INCLUDING TOPSOIL, SEED, HYDROMULCH AND NUTRIENTS IS INCLUDED IN THE COST OF THE ITEM BEING REMOVED OR REPLACED.

FILE NAME =	USER NAME =	DESIGNED — KRY	REVISED — 4/5/2010 PER IDOT	STATE OF ILLINOIS DEPARTMENT OF TRANSPORTATION	WESTERN AVENUE LAPP PLAN SHEETS	F.A.U. RTE.	SECTION	COUNTY	TOTAL SHEETS	SHEET NO.	
		DRAWN — KRY	REVISED — 4/17/2010 PER IDOT			2411	10-00076-00-RS	KANE	16	5	
		CHECKED — NAB	REVISED —			CONTRACT NO. 63476					
		DATE — 4/7/2010	REVISED —			ILLINOIS FED. AID PROJECT					
				SCALE: 1:30	SHEET NO. 06 OF 16 SHEETS	STA. 0+58	TO STA. 18+70				

MATCH LINE STA. 18+70
SEE SHEET 6
WESTERN AVENUE

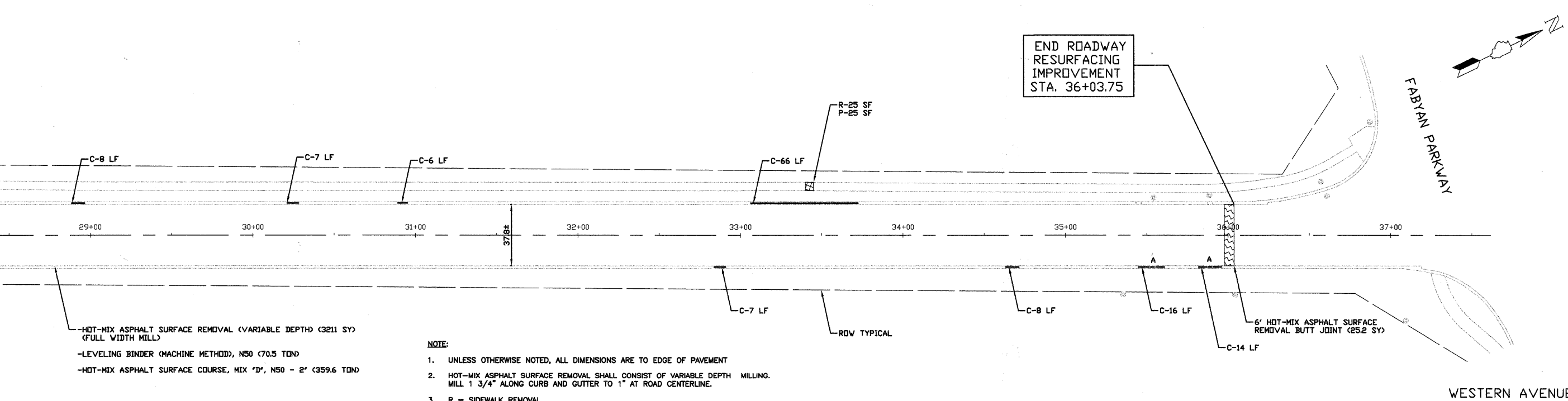


-HOT-MIX ASPHALT SURFACE REMOVAL (VARIABLE DEPTH) (4370 SY)
(FULL WIDTH MILL)
-LEVELING BINDER (MACHINE METHOD), N50 (97.1 TON)
-HOT-MIX ASPHALT SURFACE COURSE, MIX 'D', N50 - 2' (489.4 TON)

56.0' LEFT OF CL
6' HOT-MIX ASPHALT SURFACE
REMOVAL BUTT JOINT (15.4 SY)

54.0' RIGHT OF CL
6' HOT-MIX ASPHALT SURFACE
REMOVAL BUTT JOINT (16.3 SY)

MATCH LINE STA. 28+40
SEE ABOVE
WESTERN AVENUE



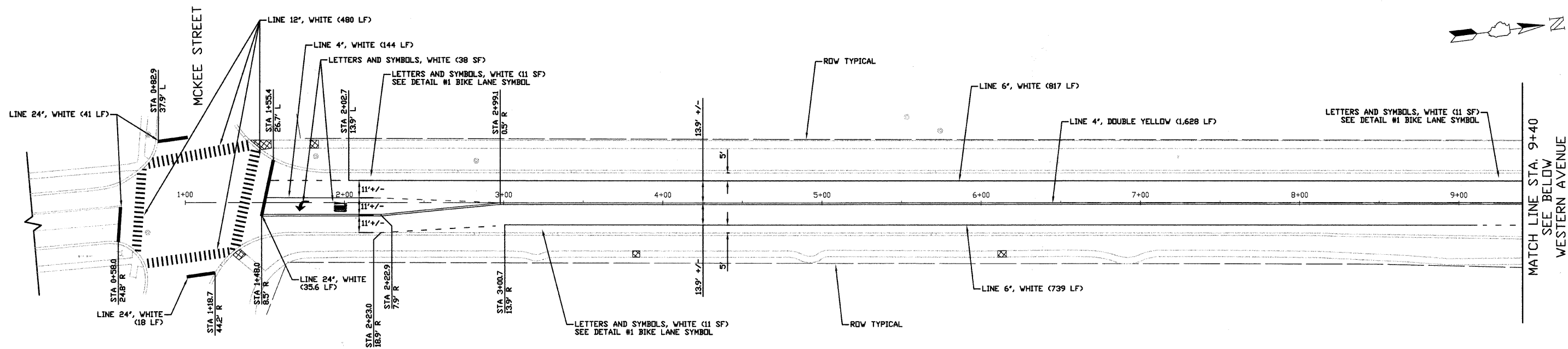
-HOT-MIX ASPHALT SURFACE REMOVAL (VARIABLE DEPTH) (3211 SY)
(FULL WIDTH MILL)
-LEVELING BINDER (MACHINE METHOD), N50 (70.5 TON)
-HOT-MIX ASPHALT SURFACE COURSE, MIX 'D', N50 - 2' (359.6 TON)

NOTE:

1. UNLESS OTHERWISE NOTED, ALL DIMENSIONS ARE TO EDGE OF PAVEMENT
2. HOT-MIX ASPHALT SURFACE REMOVAL SHALL CONSIST OF VARIABLE DEPTH MILLING. MILL 1 3/4" ALONG CURB AND GUTTER TO 1" AT ROAD CENTERLINE.
3. R = SIDEWALK REMOVAL
4. P = PORTLAND CEMENT CONCRETE SIDEWALK 5 INCH
5. C = COMBINATION CURB AND GUTTER REMOVAL
COMBINATION CONCRETE CURB AND GUTTER, TYPE B-6.12
6. ALL LANDSCAPING RESTORATION INCLUDING TOPSOIL, SEED, HYDROMULCH AND NUTRIENTS IS INCLUDED IN THE COST OF THE ITEM BEING REMOVED OR REPLACED.

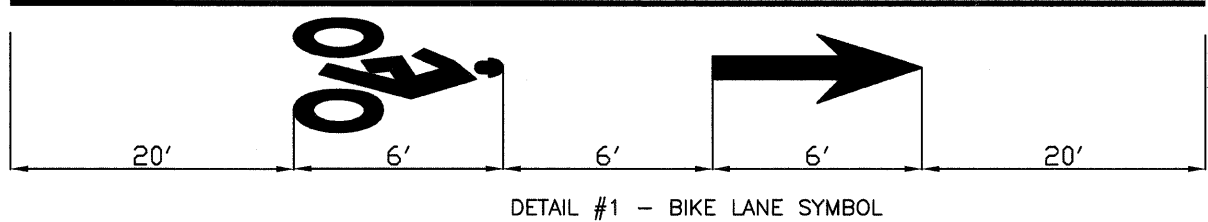
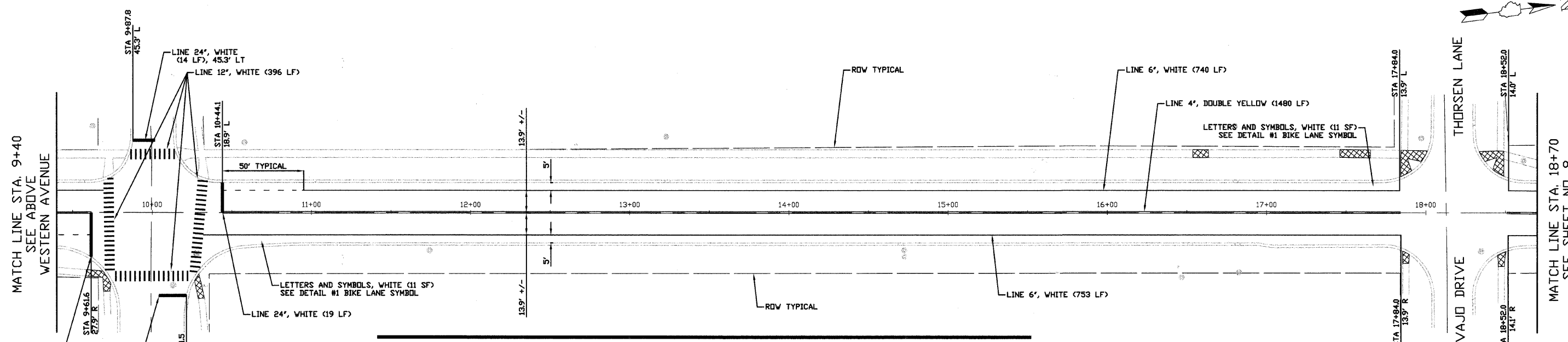
END ROADWAY
RESURFACING
IMPROVEMENT
STA. 36+03.75

FILE NAME =	USER NAME =	DESIGNED -- KRY	REVISED -- 4/5/2010 PER IDOT	STATE OF ILLINOIS DEPARTMENT OF TRANSPORTATION	WESTERN AVENUE LAPP PLAN SHEETS	F.A.U. RTE.	SECTION	COUNTY	TOTAL SHEETS	SHEET NO.
	PLOT SCALE = 1:30	DRAWN -- KRY	REVISED -- 4/17/2010 PER IDOT			2411	10-00076-00-RS	KANE	16	6
	PLOT DATE = 5/26/2010	CHECKED -- NAB	REVISED --			CONTRACT NO. 63476		ILLINOIS FED. AID PROJECT		
		DATE -- 4/7/2010	REVISED --		SCALE: 1:30	SHEET NO. 7 OF 16 SHEETS	STA. 18+70	TO STA. 37+34.60		



NOTE:
1. UNLESS OTHERWISE NOTED, ALL DIMENSIONS ARE TO EDGE OF PAVEMENT

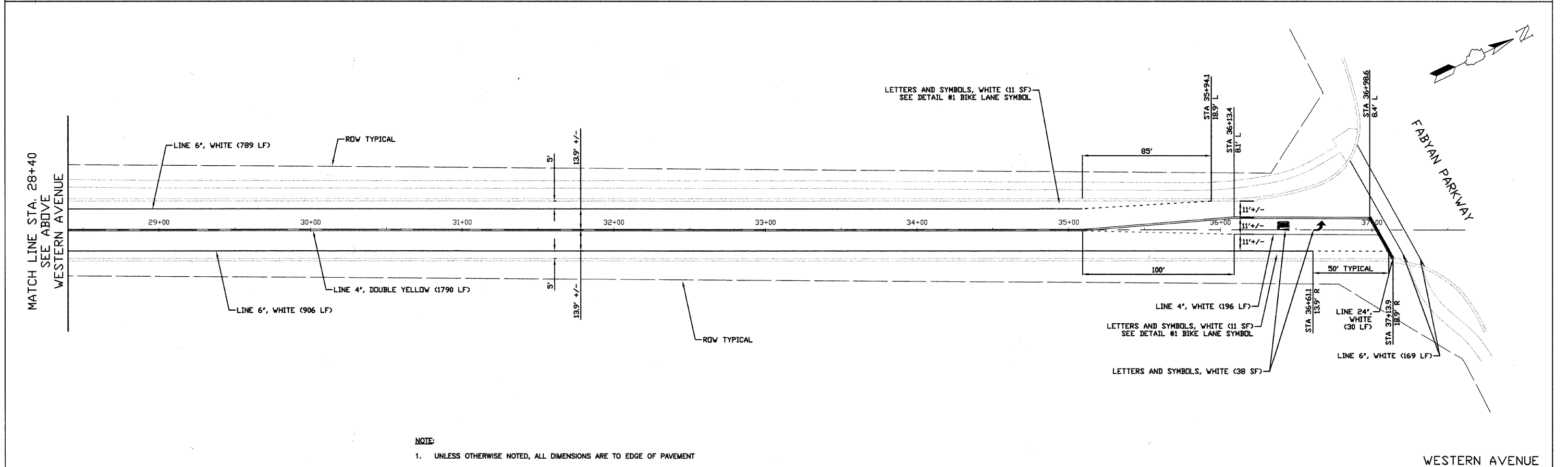
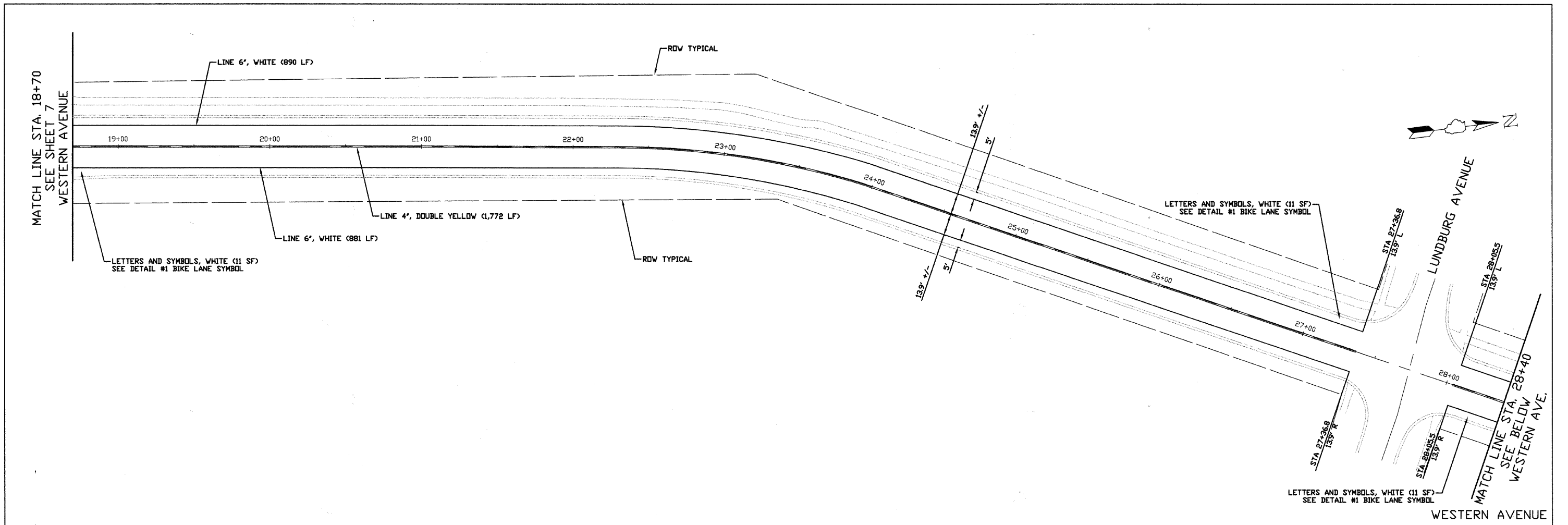
WESTERN AVENUE



DETAIL #1 - BIKE LANE SYMBOL

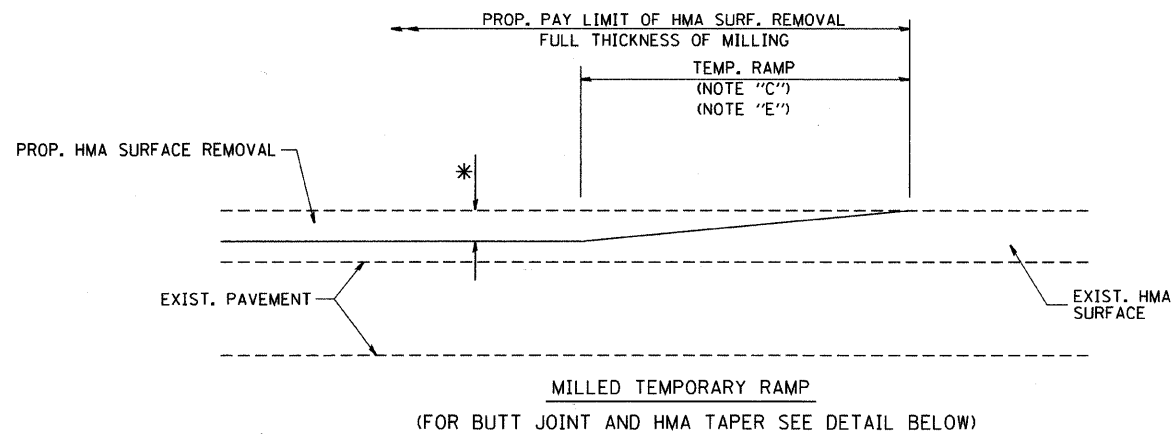
WESTERN AVENUE

FILE NAME =	USER NAME =	DESIGNED — KRY	REVISED — 4/5/2010 PER IDOT	STATE OF ILLINOIS DEPARTMENT OF TRANSPORTATION	WESTERN AVENUE LAPP PAVEMENT MARKING		F.A.U. RT#	SECTION	COUNTY	TOTAL SHEETS	SHEET NO.
	PLOT SCALE = 1:30	DRAWN — KRY	REVISED — 4/17/2010 PER IDOT				2411	10-00076-00-RS	KANE	16	8
	PLOT DATE = 5/26/2010	CHECKED — NAB	REVISED —				CONTRACT NO. 63476				
	DATE — 4/7/2010	DATE —	REVISED —				ILLINOIS FED. AID PROJECT				
					SCALE: 1:30	SHEET NO. 8 OF 16 SHEETS	STA. 0+58	TO STA. 18+70			

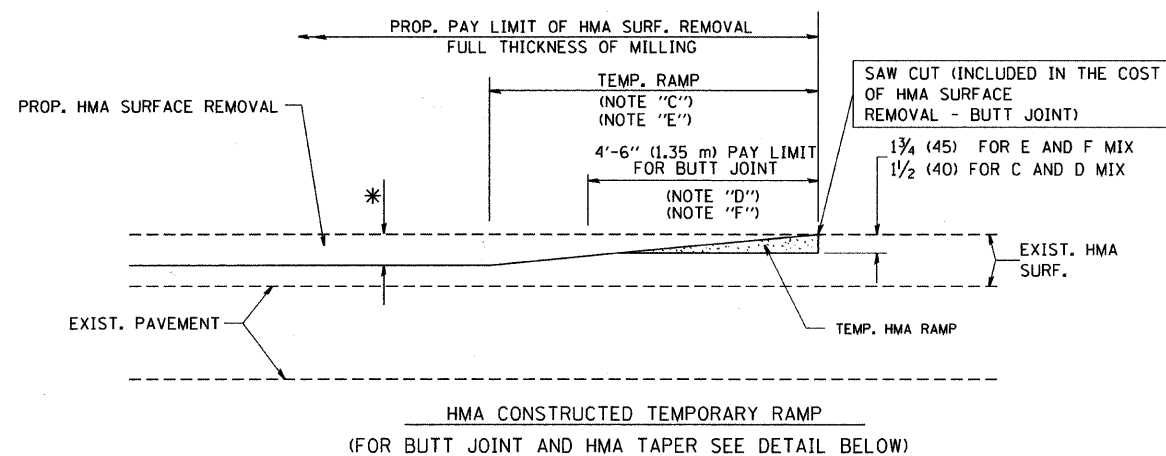


NOTE:
1. UNLESS OTHERWISE NOTED, ALL DIMENSIONS ARE TO EDGE OF PAVEMENT

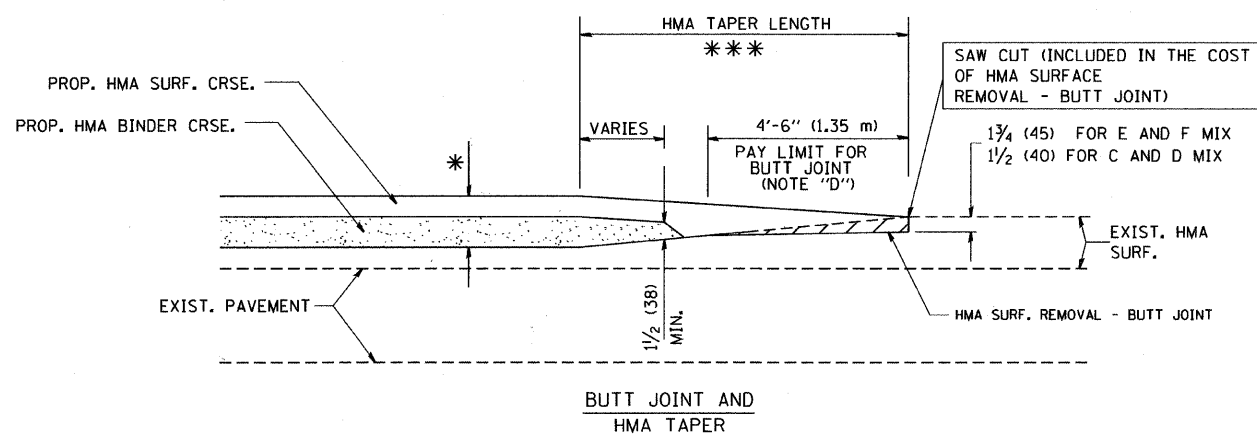
FILE NAME =	USER NAME =	DESIGNED -- KRY	REVISED -- 4/5/2010 PER IDOT	STATE OF ILLINOIS DEPARTMENT OF TRANSPORTATION	WESTERN AVENUE LAPP PAVEMENT MARKING PLAN	F.A.U. RTE.	SECTION	COUNTY	TOTAL SHEETS	SHEET NO.
	PLOT SCALE = 1:30	DRAWN -- KRY	REVISED -- 4/17/2010 PER IDOT			2411	10-00076-00-RS	KANE	16	9
	PLOT DATE = 5/26/2010	CHECKED -- NAB	REVISED --		SCALE: 1:30	SHEET NO. 9 OF 16 SHEETS	STA. 18+70 TO STA. 37+34.60	CONTRACT NO. 63476		
		DATE -- 4/7/2010	REVISED --					ILLINOIS FED. AID PROJECT		



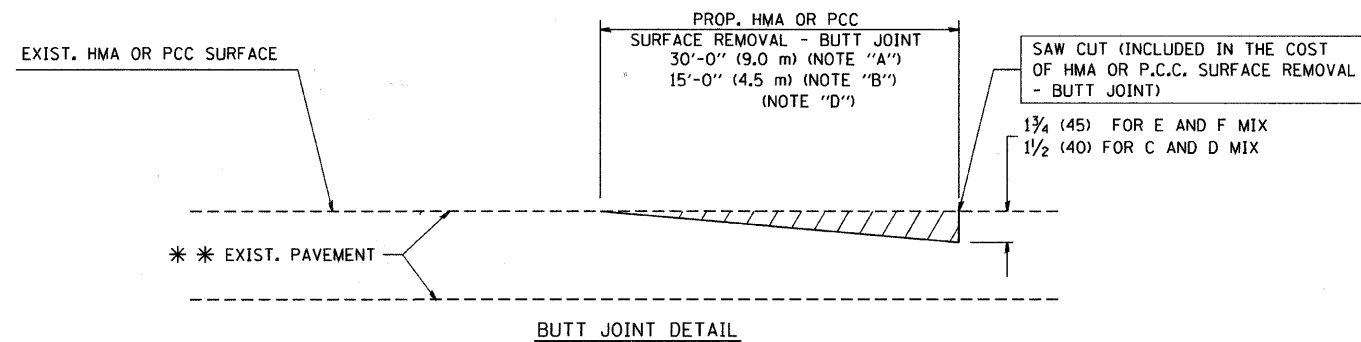
OPTION 1



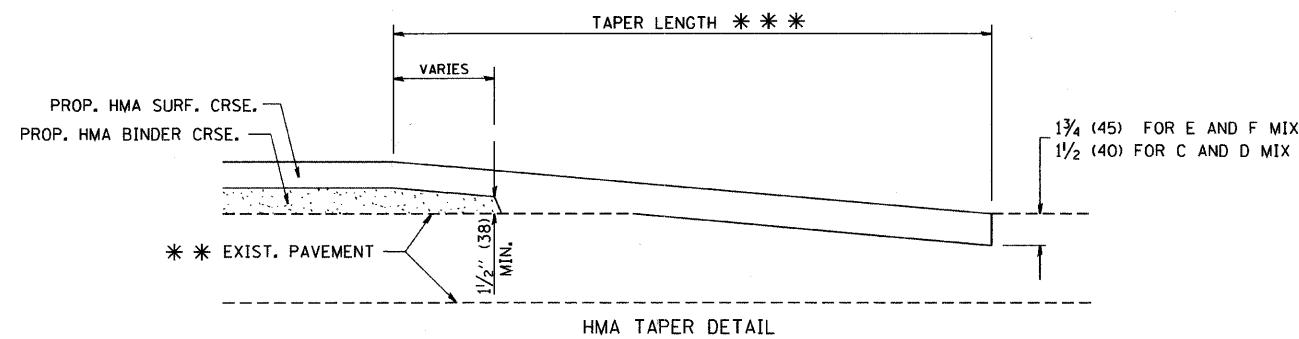
OPTION 2
TYPICAL TEMPORARY RAMP



TYPICAL BUTT JOINT AND HMA TAPER
FOR MILLING AND RESURFACING



BUTT JOINT DETAIL



TYPICAL BUTT JOINT AND HMA TAPER
FOR RESURFACING ONLY

* * PC CONCRETE, HMA OR HMA RESURFACED PAVEMENT.

NOTES

- A: MAINLINE ROADWAYS AND MAJOR SIDE ROADS.
 - B: MINOR SIDE ROADS.
 - C: THE TEMP. RAMP SHALL BE CONSTRUCTED IMMEDIATELY UPON REMOVAL OF THE EXISTING HMA SURFACE.
 - D: THE BUTT JOINT SHALL BE CONSTRUCTED IMMEDIATELY PRIOR TO PLACING THE PROPOSED HMA COURSES.
 - E: TAPER THE TEMP. RAMP AT A RATE OF 3'-0" (900 mm) PER 1 INCH (25 mm) OF MILLING THICKNESS.
 - F: INSTALLATION AND REMOVAL OF THE 4'-6" (1.35 m) TEMP. RAMP IS INCLUDED IN COST OF HMA SURFACE REMOVAL - BUTT JOINT
 - G: SEE ARTICLE 406.08 AND 406.14 OF THE STANDARD SPECIFICATIONS FOR "HMA AND/OR PCC SURFACE REMOVAL, BUTT JOINT".
- * SEE TYPICAL SECTIONS FOR MILLING THICKNESS.
- * * * 20'-0" (6.1 m) PER 1 (25) RESURFACING (NOTE "A")
10'-0" (3.0 m) PER 1 (25) RESURFACING (NOTE "B")

BASIS OF PAYMENT:

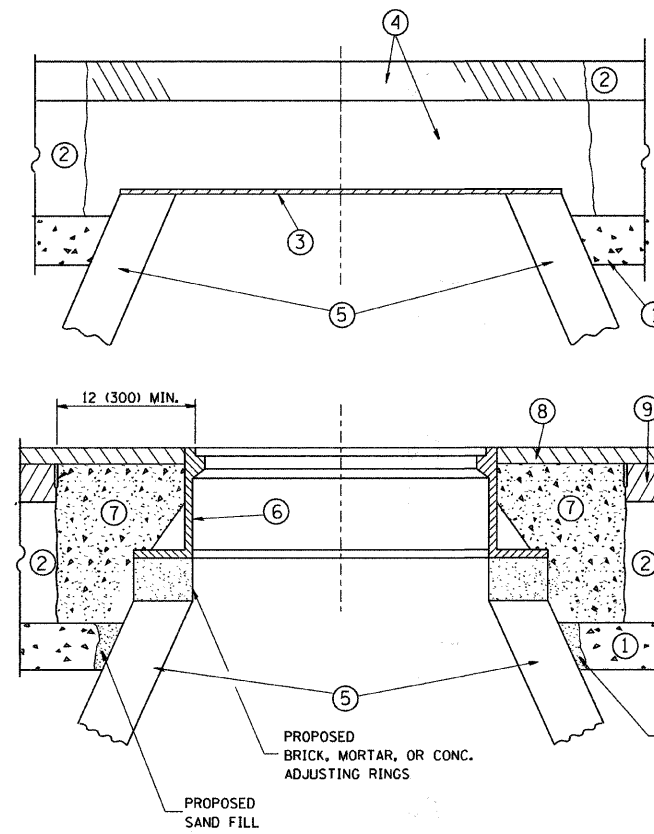
THE BUTT JOINT WILL BE PAID FOR AT THE CONTRACT UNIT PRICE PER SQUARE YARD (SQUARE METER) FOR "HOT-MIX ASPHALT SURFACE REMOVAL - BUTT JOINT" OR FOR "PORTLAND CEMENT CONCRETE SURFACE REMOVAL - BUTT JOINT".

ALL DIMENSIONS ARE IN INCHES (MILLIMETERS) UNLESS OTHERWISE SHOWN.

FILE NAME = W:\dststd\22x34\bd32.dgn	USER NAME = goglienobt	DESIGNED - M. DE YONG	REVISED - R. SHAH 10-25-94
		DRAWN -	REVISED - A. ABBAS 03-21-97
	PLOT SCALE = 50.0000 "/ IN.	CHECKED -	REVISED - M. GOMEZ 04-06-01
	PLOT DATE = 1/4/2008	DATE - 06-13-90	REVISED - R. BORO 01-01-07

STATE OF ILLINOIS
DEPARTMENT OF TRANSPORTATION

BUTT JOINT AND HMA TAPER DETAILS		F.A. RTE. SECTION	COUNTY	TOTAL SHEETS	SHEET NO.
SCALE: NONE	SHEET NO. 1 OF 1 SHEETS	2411 10-00076-00-RS	KANE	16	10
	STA. TO STA.	BD400-05 BD32	CONTRACT NO. 63476		
FED. ROAD DIST. NO. 1 ILLINOIS FED. AID PROJECT					



CONSTRUCTION PROCEDURES

STAGE 1 (BEFORE PAVEMENT MILLING)

- A) REMOVE A MINIMUM OF 12 (300) OF THE PAVEMENT FROM AROUND THE STRUCTURE.
- B) REMOVE THE EXISTING FRAME AND LID FROM THE STRUCTURE.
- C) COVER THE STRUCTURE OPENING WITH A 36 (900) DIAMETER METAL PLATE.
- D) BACKFILL WITH CRUSHED STONE AND A MINIMUM 1 1/2 (40) THICK HMA SURFACE MIX APPROVED BY THE ENGINEER.

STAGE 2 (AFTER PAVEMENT MILLING)

- A) REMOVE THE HMA SURFACE MIX AND CRUSHED STONE.
- B) INSTALL THE FRAME AND LID; ADJUST THE FRAME TO ITS FINAL SURFACE ELEVATION.
- C) THE SURROUNDING SPACE SHALL BE FILLED WITH CLASS SI CONCRETE, OR HMA SURFACE COURSE OR HMA BINDER COURSE TO THE ELEVATION OF THE SURFACE OF THE EXISTING BASE COURSE OR THE BINDER COURSE.

THE PROCEDURE EXPLAINED ABOVE SHALL CONFORM TO THE APPLICABLE PORTIONS OF SECTIONS 353, 406, 602, AND 603 OF THE STANDARD SPECIFICATIONS.

LEGEND

- ① SUB-BASE GRANULAR MATERIAL
- ② EXISTING PAVEMENT
- ③ 36 (900) DIAMETER METAL PLATE
- ④ PROPOSED CRUSHED STONE AND HMA SURFACE MIX
- ⑤ EXISTING STRUCTURE
- ⑥ FRAME AND LID (SEE NOTES)
- ⑦ CLASS SI CONCRETE, HMA SURFACE COURSE OR HMA BINDER COURSE
- ⑧ PROPOSED HMA SURFACE COURSE
- ⑨ PROPOSED HMA BINDER COURSE

NOTES:

EXISTING BROKEN FRAMES AND LIDS SHALL BE REMOVED AND DISPOSED OF BY THE CONTRACTOR AND SHALL BE REPLACED AS DIRECTED BY THE ENGINEER. REPLACEMENT FRAMES AND LIDS WILL BE PAID FOR IN ACCORDANCE WITH ARTICLE 109.04 OF THE STANDARD SPECIFICATIONS UNLESS A SEPARATE PAY ITEM HAS BEEN PROVIDED.

IF THE EXISTING LIDS ARE OPEN, THE FRAME WILL BE ADJUSTED TO THE ELEVATION OF THE MILLED PAVEMENT SURFACE PRIOR TO THE MILLING OPERATION. THE FRAME WILL NOT BE REMOVED AND COVERED BY THE METAL PLATE.

CITY OF CHICAGO CASTINGS ARE THE PROPERTY OF THE CITY AND THE CONTRACTOR SHALL NOTIFY THE CITY FOR REMOVAL AND DISPOSITION OF THE CASTINGS.

THE METAL PLATE USED TO COVER THE STRUCTURE SHALL REMAIN THE PROPERTY OF THE CONTRACTOR.

WHEN STRUCTURES ARE TO BE ADJUSTED OR RECONSTRUCTED, THE LOWERING AND RAISING OF THE FRAMES AND LIDS WILL NOT BE PAID FOR SEPARATELY BUT WILL BE INCLUDED IN THE COST OF THE CORRESPONDING PAY ITEM.

LOCATION OF STRUCTURES:

THE CONTRACTOR WILL BE REQUIRED TO KEEP A RECORD OF THE LOCATIONS OF THE BURIED STRUCTURES ACCORDING TO THE STATION AND DISTANCE LEFT OR RIGHT OF THE CENTERLINE OF PAVEMENT. UPON COMPLETION OF THE WORK, THE CONTRACTOR WILL DELIVER THE RECORD TO THE ENGINEER.

BASIS OF PAYMENT: THIS WORK WILL BE PAID FOR AT THE CONTRACT UNIT PRICE PER EACH FOR "FRAMES AND LIDS TO BE ADJUSTED, SPECIAL"

NEW FRAMES AND LIDS, WHEN SPECIFIED, WILL BE PAID FOR SEPARATELY.

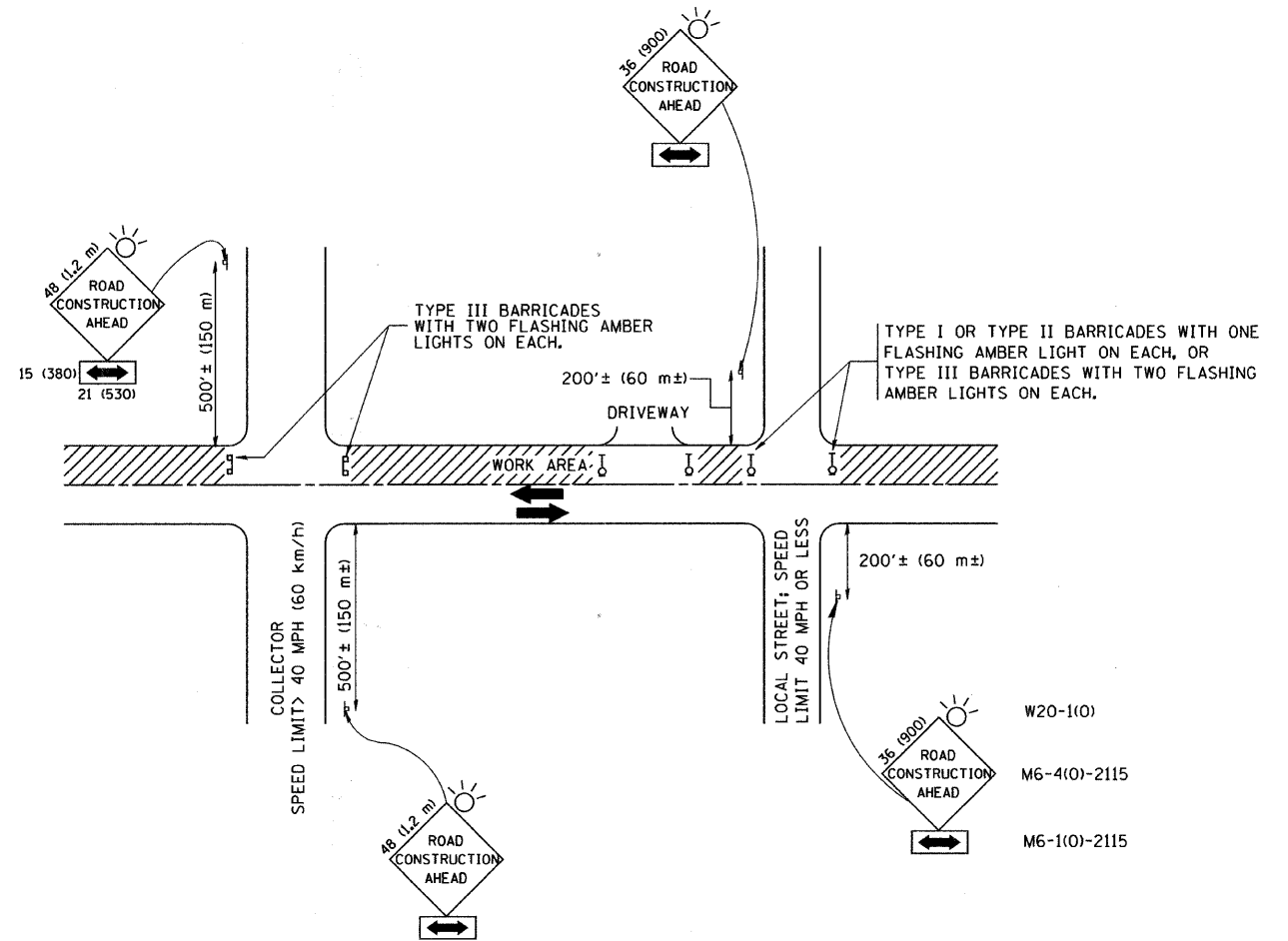
DETAILS FOR FRAMES AND LIDS ADJUSTMENT WITH MILLING

ALL DIMENSIONS ARE IN INCHES (MILLIMETERS) UNLESS OTHERWISE SHOWN

FILE NAME =	USER NAME = gogliero	DESIGNED - R. SHAH	REVISED - R. SHAH 03-10-95
W:\dststd\22x34\bd08.dgn		DRAWN -	REVISED - A. ABBAS 03-21-97
		PLOT SCALE = 50.0000 "/ IN.	REVISED - R. WIEDEMAN 05-14-04
		PLOT DATE = 1/4/2008	REVISED - R. BORO 01-01-07

**STATE OF ILLINOIS
DEPARTMENT OF TRANSPORTATION**

DETAILS FOR FRAMES AND LIDS ADJUSTMENT WITH MILLING		F.A. RTE. 2411	SECTION 10-00076-00-RS	COUNTY KANE	TOTAL SHEETS 16	SHEET NO. 11
SCALE: NONE	SHEET NO. 1 OF 1 SHEETS	STA. TO STA.	BD600-03 (BD-8)		CONTRACT NO. 63476	
FED. ROAD DIST. NO. 1 ILLINOIS FED. AID PROJECT						



TRAFFIC CONTROL AND PROTECTION FOR SIDE ROADS, INTERSECTIONS, AND DRIVEWAYS

NOTES:

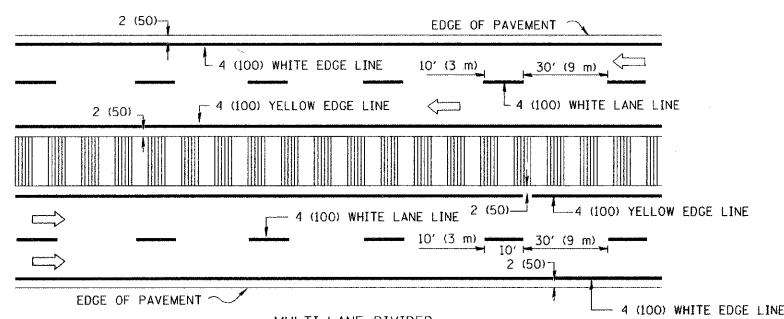
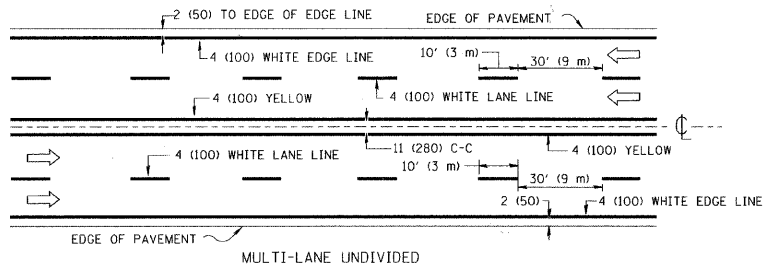
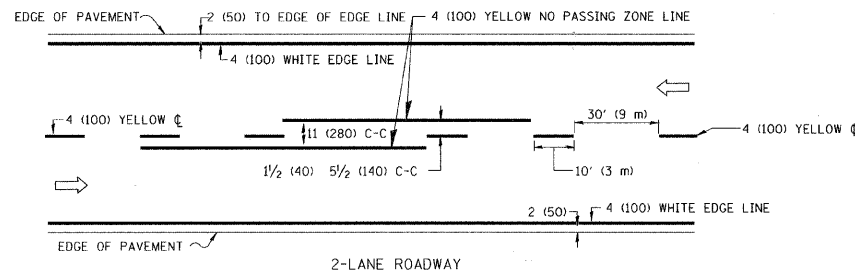
- A. FOR NO LANE RESTRICTION ON THE SIDE ROAD OR DRIVEWAYS
- SIDE ROAD WITH A SPEED LIMIT OF 40 MPH (60 km/h) OR LESS AS SHOWN ON THE DRAWING AND AS DIRECTED BY THE ENGINEER:
 - ONE ROAD CONSTRUCTION AHEAD SIGN 36 x 36 (900x900) WITH A FLASHER AND FLAG MOUNTED ON IT APPROXIMATELY 200' (60 m) IN ADVANCE OF THE MAIN ROUTE.
 - THE CLOSED PORTION OF THE MAIN ROUTE SHALL BE PROTECTED BY BLOCKING WITH TYPE I, TYPE II OR TYPE III BARRICADES, 1/3 OF THE CROSS SECTION OF THE CLOSED PORTION.
 - SIDE ROAD WITH A SPEED LIMIT GREATER THAN 40 MPH (60 km/h) AS SHOWN ON THE DRAWING AND AS DIRECTED BY THE ENGINEER:
 - ONE ROAD CONSTRUCTION AHEAD SIGN 48 x 48 (1.2 m x 1.2 m) WITH A FLASHER MOUNTED ON IT APPROXIMATELY 500' (150 m) IN ADVANCE OF THE MAIN ROUTE.
 - THE CLOSED PORTION OF THE MAIN ROUTE SHALL BE PROTECTED BY BLOCKING WITH TYPE III BARRICADES, 1/2 OF THE CROSS SECTION OF THE CLOSED PORTION.
3. WHEN THE SIDE ROAD LIES BETWEEN THE BEGINNING OF THE MAINLINE SIGNING AND THE WORK ZONE, A SINGLE HEADED ARROW (M6-1) SHALL BE USED IN LIEU OF THE DOUBLE HEADED ARROW (M6-4).
- B. FOR A LANE CLOSURE ON A SIDE ROAD OR DRIVEWAYS:
- USE APPLICABLE PORTIONS OF THE TYPICAL APPLICATION OF TRAFFIC CONTROL DEVICES (STD. 701501, STD. 701606 OR THE APPROPRIATE STANDARD). THE SPACING OF SIGNS AND BARRICADES SHALL BE ADJUSTED FOR FIELD CONDITIONS AS DIRECTED BY THE ENGINEER. THE DIRECTIONAL ARROW SHALL BE COVERED OR REMOVED WHEN NO LONGER CONSISTENT WITH THE SIDE ROAD LANE CLOSURE.
- C. ADVANCE WARNING SIGNS ARE TO BE OMITTED ON DRIVEWAY UNLESS OTHERWISE NOTED.
- D. THE TRAFFIC CONTROL AND PROTECTION FOR SIDE ROADS, INTERSECTIONS, AND DRIVEWAYS SHALL BE INCIDENTAL TO THE COST OF SPECIFIED TRAFFIC CONTROL STANDARDS OR ITEMS.

All dimensions are in millimeters (inches) unless otherwise shown.

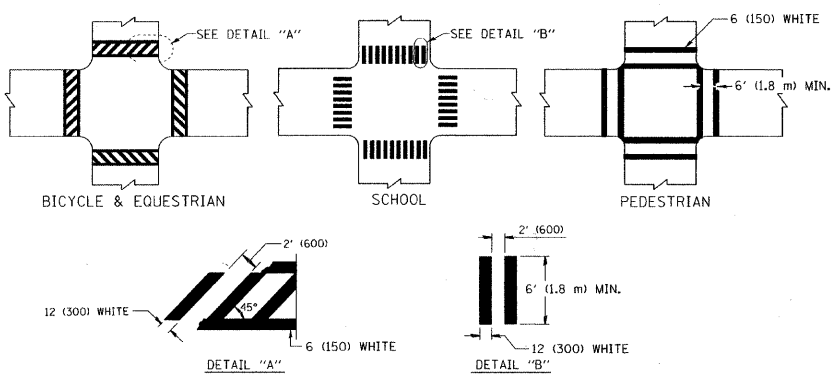
FILE NAME =	USER NAME = gaglienobt	DESIGNED - LHA	REVISED - J. OBERLE 10-18-95
W:\diststd\22x34\tc10.dgn		DRAWN -	REVISED - A. HOUSEH 03-06-96
		CHECKED -	REVISED - A. HOUSEH 10-15-96
		DATE - 06-89	REVISED - T. RAMMACHER 01-06-00

STATE OF ILLINOIS
DEPARTMENT OF TRANSPORTATION

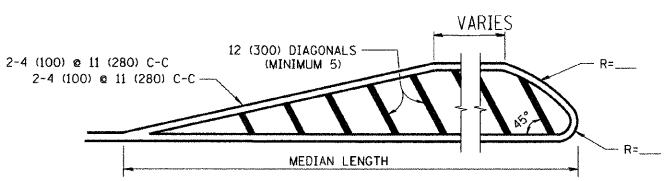
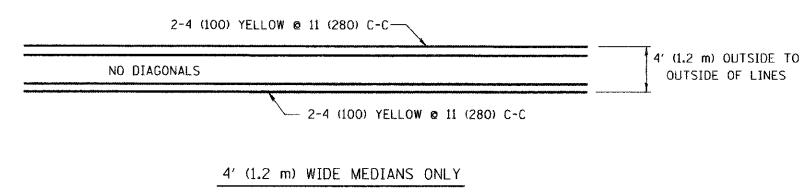
TRAFFIC CONTROL AND PROTECTION FOR SIDE ROADS, INTERSECTIONS, AND DRIVEWAYS		F.A. RTE. 2411	SECTION 10-00076-00-RS	COUNTY KANR	TOTAL SHEETS 16	SHEET NO. 12
SCALE: NONE	SHEET NO. 1 OF 1 SHEETS	STA. TO STA.	TC-10		CONTRACT NO. 63476	
FED. ROAD DIST. NO. 1 ILLINOIS FED. AID PROJECT						



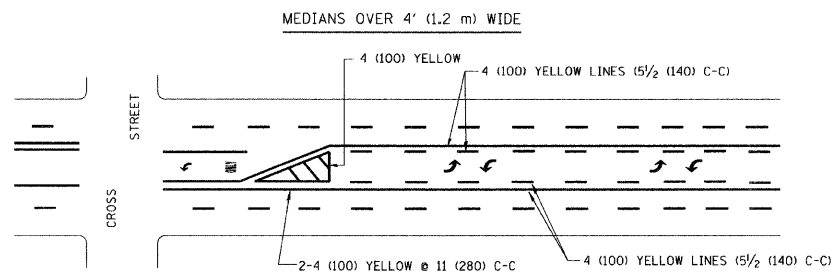
TYPICAL LANE AND EDGE LINE MARKING



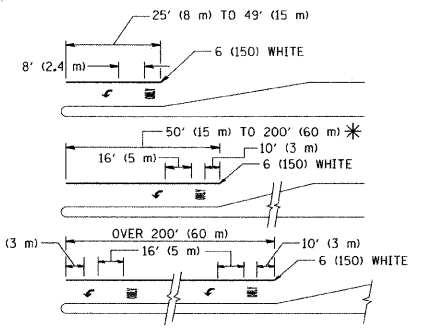
TYPICAL CROSSWALK MARKING



FOR MEDIAN LENGTHS WHERE DIAGONAL SPACING CANNOT BE ATTAINED, USE 5 (FIVE) EQUALLY SPACED DIAGONAL LINES.
 DIAGONAL LINE SPACING: 50' (15 m) C-C (LESS THAN 30MPH (50 km/h))
 75' (25 m) C-C 30MPH (50 km/h) TO 45MPH (70 km/h)
 150' (45 m) C-C (MORE THAN 45MPH (70 km/h))

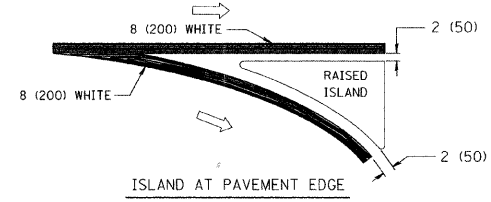
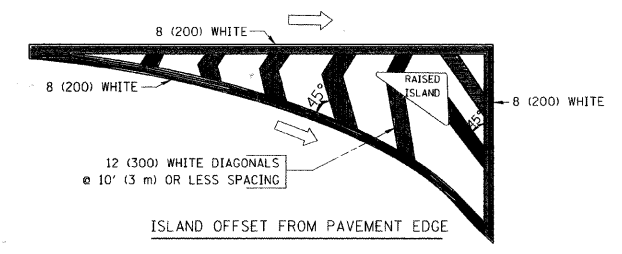


TYPICAL PAINTED MEDIAN MARKING



TYPICAL LEFT (OR RIGHT) TURN LANE

TYPICAL TURN LANE MARKING



TYPICAL ISLAND MARKING

TYPE OF MARKING	WIDTH OF LINE	PATTERN	COLOR	SPACING / REMARKS
CENTERLINE ON 2 LANE PAVEMENT	4 (100)	SKIP-DASH	YELLOW	10' (3 m) LINE WITH 30' (9 m) SPACE
CENTERLINE ON MULTI-LANE UNDIVIDED PAVEMENT	2 @ 4 (100)	SOLID	YELLOW	11 (280) C-C
NO PASSING ZONE LINES: FOR ONE DIRECTION FOR BOTH DIRECTIONS	4 (100) 2 @ 4 (100)	SOLID SOLID	YELLOW YELLOW	5/2 (140) C-C FROM SKIP-DASH CENTERLINE 11 (280) C-C OMIT SKIP-DASH CENTERLINE BETWEEN
LANE LINES	4 (100) 5 (125) ON FREEWAYS	SKIP-DASH SKIP-DASH	WHITE WHITE	10' (3 m) LINE WITH 30' (9 m) SPACE
DOTTED LINES (EXTENSIONS OF CENTER, LANE OR TURN LANE MARKINGS)	SAME AS LINE BEING EXTENDED	SKIP-DASH	SAME AS LINE BEING EXTENDED	2' (600) LINE WITH 6' (1.8 m) SPACE
EDGE LINES	4 (100)	SOLID	YELLOW-LEFT WHITE-RIGHT	OUTLINE MOUNTABLE MEDIANS IN YELLOW; EDGE LINES ARE NOT USED NEXT TO BARRIER CURB
TURN LANE MARKINGS	6 (150) LINE; FULL SIZE LETTERS & SYMBOLS (8' (2.4m))	SOLID	WHITE	SEE TYPICAL TURN LANE MARKING DETAIL
TWO WAY LEFT TURN MARKING	2 @ 4 (100) EACH DIRECTION 8' (2.4m) LEFT ARROW	SKIP-DASH AND SOLID IN PAIRS	YELLOW WHITE	10' (3 m) LINE WITH 30' (9 m) SPACE FOR SKIP-DASH; 5/2 (140) C-C BETWEEN SOLID LINE AND SKIP-DASH LINE SEE TYPICAL TWO-WAY LEFT TURN MARKING DETAIL
CROSSWALK LINES (PEDESTRIAN) A. DIAGONALS (BIKE & EQUESTRIAN) B. LONGITUDINAL BARS (SCHOOL)	2 @ 6 (150) 12 (300) @ 45° 12 (300) @ 90°	SOLID SOLID SOLID	WHITE WHITE WHITE	NOT LESS THAN 6' (1.8 m) APART 2' (600) APART 2' (600) APART SEE TYPICAL CROSSWALK MARKING DETAILS.
STOP LINES	24 (600)	SOLID	WHITE	PLACE 4' (1.2 m) IN ADVANCE OF AND PARALLEL TO CROSSWALK, IF PRESENT. OTHERWISE, PLACE AT DESIRED STOPPING POINT. PARALLEL TO CROSSROAD CENTERLINE, WHERE POSSIBLE
PAINTED MEDIANS	2 @ 4 (100) WITH 12 (300) DIAGONALS @ 45° NO DIAGONALS USED FOR 4' (1.2 m) WIDE MEDIANS	SOLID	YELLOW: TWO WAY TRAFFIC WHITE: ONE WAY TRAFFIC	11 (280) C-C FOR THE DOUBLE LINE SEE TYPICAL PAINTED MEDIAN MARKING.
GORE MARKING AND CHANNELIZING LINES	8 (200) WITH 12 (300) DIAGONALS @ 45°	SOLID	WHITE	DIAGONALS: 15' (4.5 m) C-C (LESS THAN 30MPH (50 km/h)) 20' (6 m) C-C 30MPH (50 km/h) TO 45MPH (70 km/h) 30' (9 m) C-C (OVER 45MPH (70 km/h))
RAILROAD CROSSING	24 (600) TRANSVERSE LINES; "RR" IS 6' (1.8 m) LETTERS; 16 (400) LINE FOR "X"	SOLID	WHITE	SEE STATE STANDARD 780001 AREA OF: "R"=3.6 SQ. FT. (0.33 m ²) EACH "X"=54.0 SQ. FT. (5.0 m ²)
SHOULDER DIAGONALS	12 (300) @ 45°	SOLID	WHITE - RIGHT YELLOW - LEFT	50' (15 m) C-C (LESS THAN 30MPH (50 km/h)) 75' (25 m) C-C (30 MPH (50 km/h) TO 45MPH (70 km/h)) 150' (45 m) C-C (OVER 45MPH (70 km/h))

FOR FURTHER DETAILS ON PAVEMENT MARKING REFER TO STANDARD SPECIFICATIONS FOR ROAD AND BRIDGE CONSTRUCTION AND STATE STANDARD 780001.

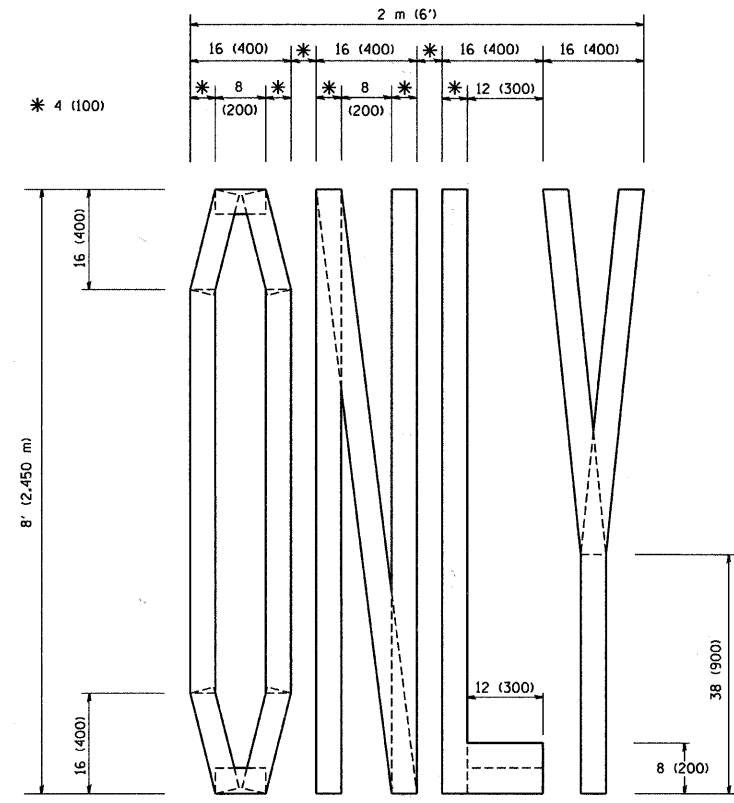
All dimensions are in inches (millimeters) unless otherwise shown.

FILE NAME =	USER NAME = drvakosgn	DESIGNED - EVERS	REVISED - T. RAMMACHER 10-27-94
c:\pwwork\pwr\dot\drvakosgn\d2108315\to3.dgn		DRAWN -	REVISED - C. JUCIUS 09-09-09
	PLOT SCALE = 50.0000' / IN.	CHECKED -	REVISED -
	PLOT DATE = 9/9/2009	DATE - 03-19-90	REVISED -

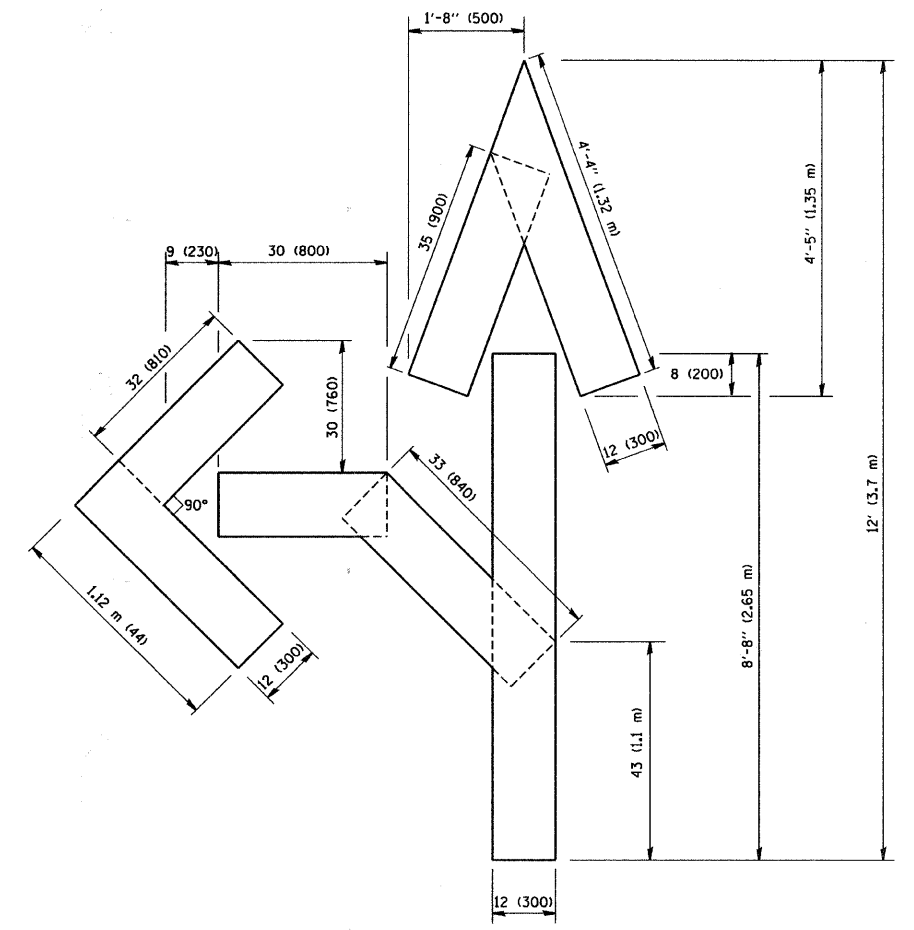
STATE OF ILLINOIS
DEPARTMENT OF TRANSPORTATION

DISTRICT ONE		F.A. -	SECTION	COUNTY	TOTAL SHEETS	SHEET NO.
TYPICAL PAVEMENT MARKINGS		2411	10-00076-00-RS	KANE	16	13
SCALE: NONE		SHEET NO. 1 OF 1 SHEETS		STA. TO STA.	CONTRACT NO. 63476	

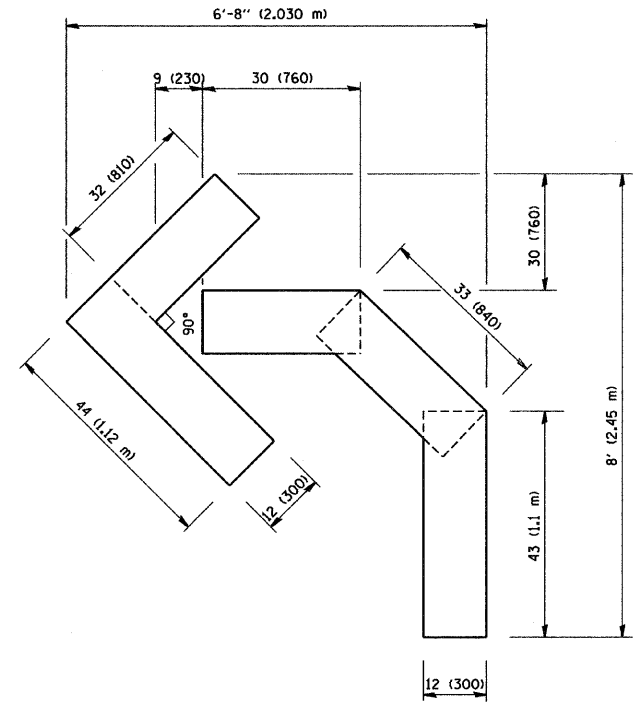
TC-13		FED. ROAD DIST. NO. 1	ILLINOIS	FED. AID PROJECT
-------	--	-----------------------	----------	------------------



QUANTITY
 4 (100) LINE = 64.1 ft. (19.7 m)
 21.1 sq. ft. (1.97 sq. m)



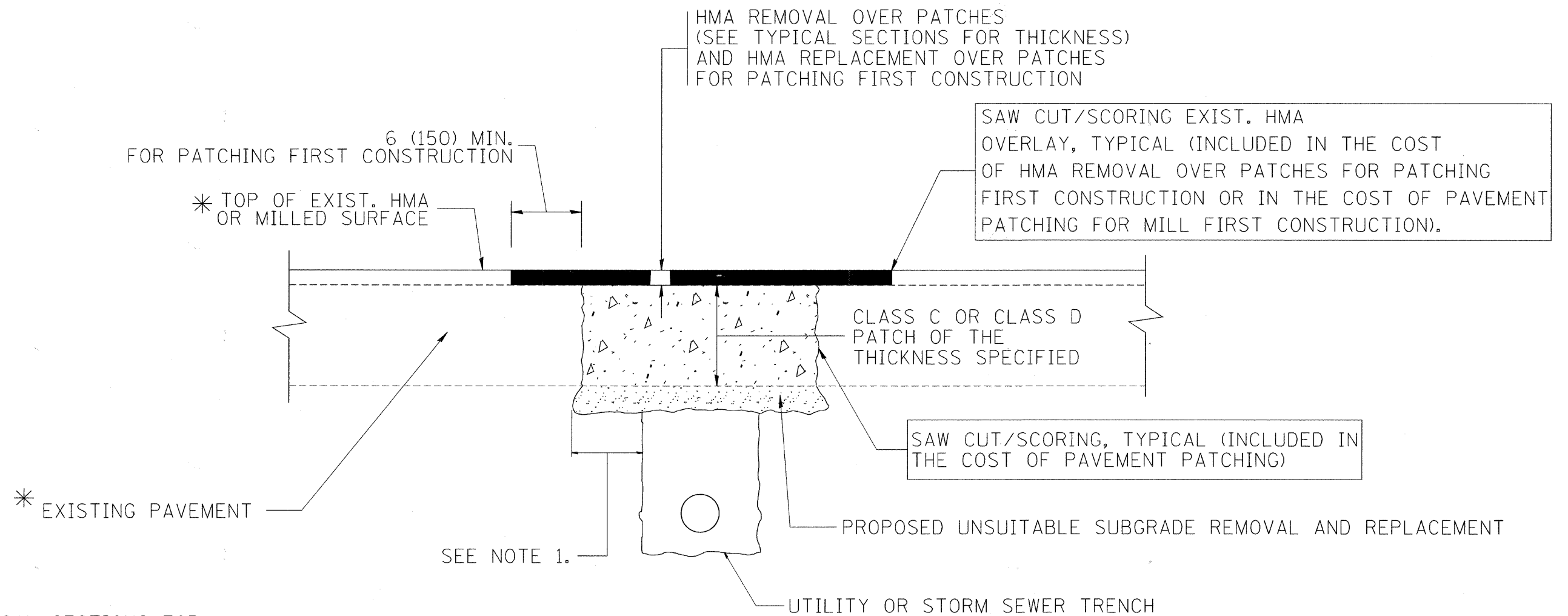
QUANTITY
 4 (100) LINE = 82.5 ft. (25.3 m)
 27.5 sq. ft. (2.53 sq. m)



QUANTITY
 4 (100) LINE = 45.5 ft. (13.9 m)
 15.2 sq. ft. (1.39 sq. m)

All dimensions are in inches (millimeters) unless otherwise shown.

FILE NAME = W:\diststd\22x34\tcl6.dgn	USER NAME = goglianob	DESIGNED -	REVISED - T. RAMMACHER 06-05-96	STATE OF ILLINOIS DEPARTMENT OF TRANSPORTATION	PAVEMENT MARKING LETTERS AND SYMBOLS FOR TRAFFIC STAGING			F.A. RTE. =	SECTION	COUNTY	TOTAL SHEETS	SHEET NO.
	PLOT SCALE = 50.0000 / IN.	CHECKED -	REVISED - T. RAMMACHER 11-04-97					2411	10-00076-00-RS	KANE	16	14
	PLOT DATE = 1/4/2008	DATE = 09-18-94	REVISED - T. RAMMACHER 03-02-98		REVISED - E. GOMEZ 08-28-00	SCALE: NONE	SHEET NO. 1 OF 1 SHEETS	STA. TO STA.	TC-16 FED. ROAD DIST. NO. 1 ILLINOIS FED. AID PROJECT			
								CONTRACT NO. 63476				



* SEE TYPICAL SECTIONS FOR THICKNESS AND MATERIALS

NOTES:

1. THE WIDTH OF THE FULL DEPTH PATCH OVER A TRENCH SHALL BE 12 (300) WIDER ON EACH SIDE OF THE TRENCH.
2. FOR METHOD OF MEASUREMENT AND BASIS OF PAYMENT, SEE RECURRING SPECIAL PROVISION "PATCHING WITH HOT-MIX ASPHALT OVERLAY REMOVAL".

SEQUENCE OF CONSTRUCTION (PATCHING FIRST)

1. REMOVE THE EXISTING HMA MATERIAL OVER THE AREA TO BE PATCHED.
2. REMOVE AND REPLACE WITH CLASS C OR D PATCH.
3. REPLACE HMA MATERIAL OVER THE AREA TO BE PATCHED.

SEQUENCE OF CONSTRUCTION (MILLING FIRST)

1. MILL HMA FIRST IF THERE IS AT LEAST 4 1/2 INCHES OR MORE OF HMA MATERIAL ON TOP OF THE EXISTING PAVEMENT OR IF THE PAVEMENT IS FULL DEPTH HMA. A MINIMUM OF 2 INCHES OF HMA MATERIAL SHALL BE IN PLACE AFTER MILLING.
2. REMOVE AND REPLACE WITH FULL DEPTH CLASS D PATCHES TO TOP OF MILLED SURFACE.

ALL DIMENSIONS ARE IN INCHES (MILLIMETERS) UNLESS OTHERWISE SHOWN.

FILE NAME = c:\projects\diststd22x34\bd22.dgn	USER NAME = bauerdl	DESIGNED - R. SHAH	REVISED - A. ABBAS 04-27-98	STATE OF ILLINOIS DEPARTMENT OF TRANSPORTATION	PAVEMENT PATCHING FOR HMA SURFACED PAVEMENT	F.A. RTE. 2411	SECTION 10-00076-00-RS	COUNTY KANE	TOTAL SHEETS 16	SHEET NO. 15	
	PLOT SCALE = 50.000' / IN.	CHECKED -	REVISED - R. BORO 01-01-07			SCALE: NONE	SHEET NO. 1 OF 1 SHEETS	STA.	TO STA.	BD400-04 (BD-22)	
	PLOT DATE = 10/27/2008	DATE - 10-25-94	REVISED - K. ENG 10-27-08					FED. ROAD DIST. NO. 1		ILLINOIS FED. AID PROJECT	
										CONTRACT NO. 03470	

VARIABLE - TO MEET EXISTING DIMENSIONS AND FIELD CONDITIONS (SEE NOTE ②)

PROP. CONC. CURB OR CURB AND GUTTER REPLACEMENT IN ACCORDANCE WITH STATE STANDARD 606001. (SEE NOTE ②)

SAW CUT FULL DEPTH - INCLUDED IN THE COST OF SIDEWALK, DRIVEWAY OR MEDIAN SURFACE REMOVAL PAY ITEM.

SEE STATE STANDARD 606001
EXISTING OR PROPOSED HMA SURFACE (IF APPLICABLE)

18" (450) MAX.

1/4" (5) ***

EXISTING SIDEWALK, DRIVEWAY, MEDIAN SURFACE, SOD OR GROUND.

PROPOSED SIDEWALK, DRIVEWAY PAVEMENT, MEDIAN SURFACE OR SODDING SALT TOLERANT WITH TOP SOIL, 4" (100) SOD RESTORATION (SEE NOTE ①).

EXISTING CONCRETE PAVEMENT, CONCRETE BASE COURSE OR FLEXIBLE PAVEMENT

3" (75) MIN.

SUITABLE BACKFILL MATERIAL (INCLUDED IN THE COST OF CURB OR CURB AND GUTTER REMOVAL AND REPLACEMENT)

PROPOSED 3/4" (20) PREFORMED EXPANSION JOINT AT CONCRETE SIDEWALKS, DRIVEWAYS, AND MEDIANS. (INCLUDED IN THE COST OF CURB OR CURB AND GUTTER REMOVAL AND REPLACEMENT.)

* 3" (75) MINIMUM FROM TOP AND BOTTOM OF THE CONCRETE PAVEMENT OR BASE COURSE.

*** IF THE FINAL SURFACE OF THE PAVEMENT IS CONCRETE, THE GUTTER IS TO BE FLUSH WITH THE PAVEMENT.

UNSUITABLE SUB-BASE MATERIAL TO BE REMOVED, IF DIRECTED BY THE ENGINEER, SHALL BE REPLACED WITH EITHER SUB-BASE GRANULAR MATERIAL, TYPE B OR ADDITIONAL THICKNESS OF CONCRETE.

REMOVAL AND REPLACEMENT 4" (100) OR LESS IS INCLUDED IN THE COST OF CURB OR CURB AND GUTTER REMOVAL AND REPLACEMENT.

REMOVAL AND REPLACEMENT IN EXCESS OF 4" (100) WILL BE PAID FOR IN ACCORDANCE WITH ARTICLE 109.04 OF THE STANDARD SPECIFICATIONS.

NOTE: ① SIDEWALK, DRIVEWAY PAVEMENT OR MEDIAN SURFACE SHALL BE SIMILAR TO THE MATERIAL BEING REMOVED AND WILL BE PAID FOR SEPARATELY.

SODDING, SALT TOLERANT AND TOP SOIL, FURNISH AND PLACE 4" WILL BE PAID FOR SEPARATELY.

② FERTILIZER FOR THE PLACEMENT OF THE SOD IS NOT REQUIRED

③ CURB OR CURB AND GUTTER REPLACEMENT SHALL MATCH THE SHAPE OF THE EXISTING CURB OR CURB AND GUTTER UNLESS OTHERWISE SPECIFIED.

④ FOR CURB OR CURB AND GUTTER REMOVAL AND REPLACEMENT ADJACENT TO FLEXIBLE PAVEMENT DELETE EPOXY COATED TIE BARS.

⑤ LONGITUDINAL BARS, IF ENCOUNTERED IN THE EXISTING CURB OR CURB AND GUTTER, ARE NOT TO BE REPLACED. CUTTING AND REMOVING LONGITUDINAL BARS SHALL BE INCLUDED IN THE COST OF CURB OR CURB AND GUTTER REMOVAL AND REPLACEMENT.

⑥ THE COST OF HMA SURFACE REMOVAL IN THE EXISTING GUTTER FLAG SHALL BE INCLUDED IN THE COST OF THE CURB AND GUTTER REMOVAL AND REPLACEMENT.

⑦ THE REMOVAL AND REPLACEMENT OF THE EXISTING CURB OR CURB AND GUTTER SHALL BE DONE IN ACCORDANCE WITH THE APPLICABLE PORTIONS OF SECTION 440 AND 606 OF THE STANDARD SPECIFICATIONS.

⑧ THE LOCATIONS OF REMOVAL AND REPLACEMENT OF EXISTING CURB OR CURB AND GUTTER SHALL BE DETERMINED BY THE RESIDENT ENGINEER AT THE TIME OF CONSTRUCTION.

PROPOSED #6 (20) EPOXY COATED TIE BARS 24" (600) LONG AT 24" (600) CENTERS WILL NOT BE PAID FOR SEPARATELY. DELETE EPOXY COATED TIE BARS IF EXISTING TIE BARS ARE USUABLE AS DETERMINED BY THE ENGINEER. (SEE NOTE ③).

BASIS OF PAYMENT:

THIS WORK WILL BE PAID FOR AT THE CONTRACT UNIT PRICE PER FOOT (METER) FOR "CURB REMOVAL AND REPLACEMENT" OR "COMBINATION CONCRETE CURB AND GUTTER REMOVAL AND REPLACEMENT".

CURB OR CURB AND GUTTER REMOVAL AND REPLACEMENT

ALL DIMENSIONS ARE IN INCHES (MILLIMETERS) UNLESS OTHERWISE SHOWN.

FILE NAME =	USER NAME = drvakosgn	DESIGNED - A. HOUSEH	REVISED - R. SHAH 10-03-96
ca:\pwork\pvidot\drvakosgn\ca0108315\bc24.dgn		DRAWN -	REVISED - A. ABBAS 03-21-97
		CHECKED -	REVISED - M. GOMEZ 01-22-01
		DATE - 03-11-94	REVISED - R. BORO 12-15-09

**STATE OF ILLINOIS
DEPARTMENT OF TRANSPORTATION**

**CURB OR CURB AND GUTTER
REMOVAL AND REPLACEMENT**

SCALE: NONE SHEET NO. 1 OF 1 SHEETS STA. TO STA.

F.A. RTE.	SECTION	COUNTY	TOTAL SHEETS	SHEET NO.
2411	10-00076-00-RS	KANB	16	16
BD600-06 (BD-24)		CONTRACT NO. 63476		
FED. ROAD DIST. NO. 1 ILLINOIS FED. AID PROJECT				