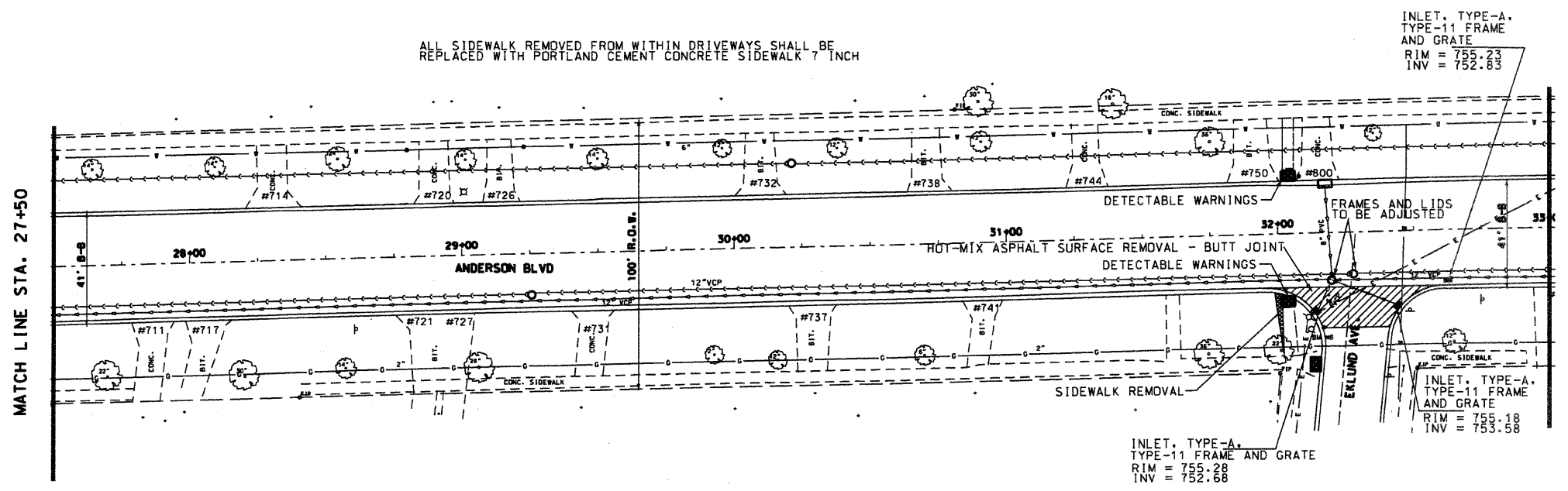


SCALE: 1" = 50'



SCALE: 1" = 50'

CITY OF GENEVA
KANE COUNTY, ILLINOIS

DESIGNED	CEB	REVISED	-
DRAWN	HL PM	REVISED	-
CHECKED	PB	REVISED	-
DATE	APRIL 2010	REVISED	-

STATE OF ILLINOIS
DEPARTMENT OF TRANSPORTATION
ANDERSON BLVD LAPP IMPROVEMENTS

GENERAL PLAN	STA. 22+00 TO 33+00
JOB NO.	C-91-545-10
SCALE:	STA. TO STA.

F.A.U. RTE.	SECTION	COUNTY	TOTAL SHEETS	SHEET NO.
1678	10-00111-00-RS	KANE	22	10
FED. ROAD DIST. NO.	C-91-545-10	CONTRACT NO. 63478		
ILLINOIS	FED. AID PROJECT ARA-9003(679)			