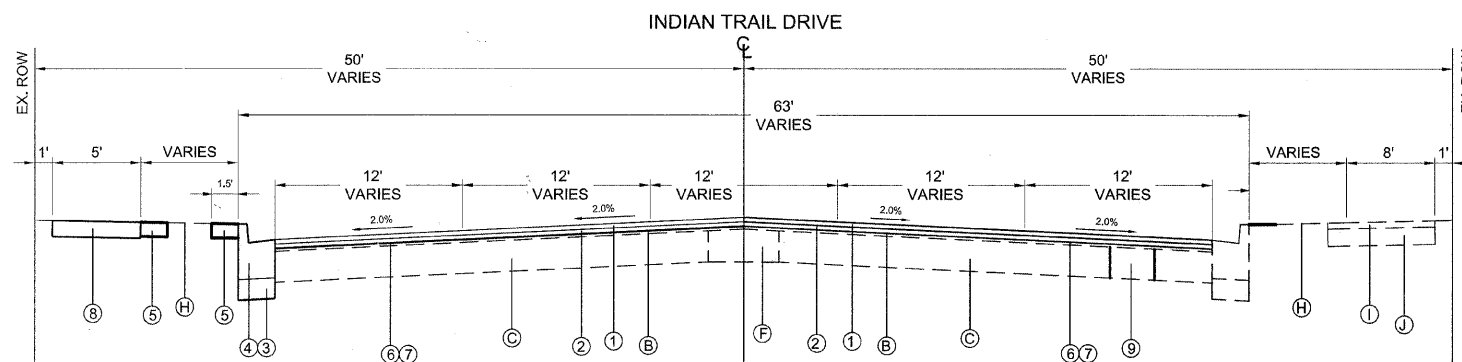


EXISTING TYPICAL SECTION

STA. 12+56 TO STA. 72+00,
INDIAN TRAIL DRIVE



PROPOSED TYPICAL SECTION

STA. 12+56 TO STA. 72+00,
INDIAN TRAIL DRIVE

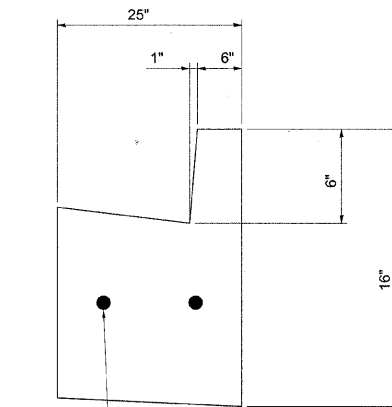
NOTE: OMIT SECTION
AT RAILROAD
CROSSING

EXISTING LEGEND

- (A) HOT-MIX ASPHALT SURFACE COURSE, 1½"
- (B) HOT-MIX ASPHALT BINDER COURSE, 4¾"
- (C) HOT-MIX ASPHALT BASE COURSE, 7"
- (D) COMBINATION CONCRETE CURB & GUTTER, TYPE B6.18
- (E) PORTLAND CEMENT CONCRETE SIDEWALK, 5"
- (F) PORTLAND CEMENT CONCRETE BASE COURSE
- (G) HOT-MIX ASPHALT SURFACE REMOVAL, 2"
- (H) EXISTING GROUND
- (I) BITUMINOUS CONCRETE PATH, 2"
- (J) AGGREGATE BASE COURSE, TYPE B CA-6, 6"

PROPOSED LEGEND

- ① HOT-MIX ASPHALT SURFACE COURSE, MIX "D", N70, 1½"
- ② LEVELING BINDER (MACHINE METHOD), N70, 3/4" (MIN.)
- ③ AGGREGATE BASE COURSE, TYPE B CA-7, 6" (INCLUDED IN THE COST OF CURB & GUTTER PAY ITEM)
- ④ COMB CONCRETE CURB AND GUTTER REMOVAL AND REPLACEMENT (AS DIRECTED BY THE RESIDENT ENGINEER)
- ⑤ PULVERIZED TOPSOIL 6", SEEDING, SALT TOLERANT, STRAW MULCH PAID AS RESTORATION
- ⑥ BITUMINOUS MATERIALS (PRIME COAT)
- ⑦ AGGREGATE (PRIME COAT)
- ⑧ SIDEWALK REMOVAL AND PORTLAND CEMENT CONCRETE SIDEWALK 5 INCH (AS DIRECTED BY THE RESIDENT ENGINEER)
- ⑨ CLASS D PATCHES, SPECIAL, 12-INCH (AS DIRECTED BY THE RESIDENT ENGINEER)



EXISTING COMBINATION CONCRETE CURB AND GUTTER, TYPE B6.18

HOT-MIX ASPHALT MIXTURE REQUIREMENTS

MIXTURE TYPE	VOIDS
RESURFACING	
HOT-MIX ASPHALT SURFACE COURSE, MIX "D", N70 (IL 9.5mm)	4% @ 70 GYR
LEVELING BINDER (MACHINE METHOD), N70 (IL 9.5mm)	4% @ 70 GYR
PATCHING	
CLASS D PATCHES (HMA BINDER IL-19mm), 12-INCH	4% @ 70 GYR
DRIVEWAYS	
HOT-MIX ASPHALT SURFACE COURSE, MIX "C", N50 (IL 9.5mm)	4% @ 50 GYR

THE UNIT WEIGHT USED TO CALCULATE ALL HOT-MIX ASPHALT SURFACE MIXTURES IS 112 LBS/SQ YD/IN

THE "AC TYPE" FOR POLYMERIZED HMA MIXES SHALL BE "SBS/SBR PG 70-22 AND FOR NON-POLYMERIZED HMA THE "AC TYPE" SHALL BE "PG 64-22" UNLESS MODIFIED BY DISTRICT ONE SPECIAL PROVISIONS. FOR "PERCENT OF RAP" SEE DISTRICT ONE SPECIAL PROVISIONS



CITY OF AURORA
ENGINEERING DIVISION
44 EAST DOWNER PLACE

DESIGNED - CHRIS LIROT
DRAWN - ALBERTO SANCHEZ
CHECKED - CHRIS LIROT
DATE - 10/1/09

REVISED -
REVISED -
REVISED -
REVISED -

STATE OF ILLINOIS
DEPARTMENT OF TRANSPORTATION

TYPICAL CROSS SECTIONS

SCALE: NONE SHEET NO. 1 OF 1 SHEETS STA. N/A TO STA. N/A

F.A.P. RTE. 1503	SECTION 10-00290-00-RS	COUNTY KANE	TOTAL SHEETS 14	SHEET NO. 4
FED. ROAD DIST. NO. ILLINOIS FED. AID PROJECT			CONTRACT NO. 63483	