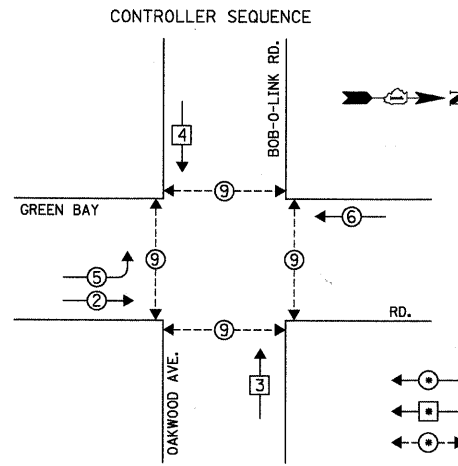


DATE: \_\_\_\_\_ BY: \_\_\_\_\_  
 SURVEYED: \_\_\_\_\_ PLOTTED: \_\_\_\_\_  
 CHECKED: \_\_\_\_\_ DATE: \_\_\_\_\_  
 STRUCTURE NOTATIONS: \_\_\_\_\_

**CHRISTOPHER B. BURKE ENGINEERING LTD.**  
 3575 West Higgins Road, Suite 600  
 Rosemont, Illinois 60018  
 (847) 823-0500

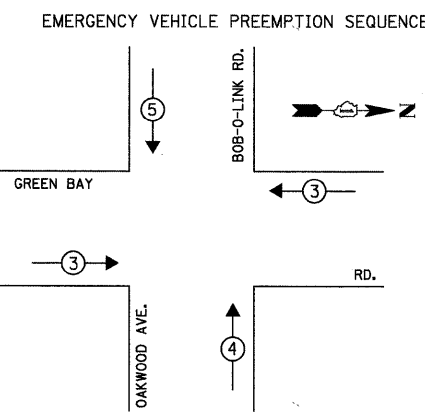


**LEGEND**

- ◁ ○ ▷ DUAL ENTRY PHASE
- ◁ □ ▷ SINGLE ENTRY PHASE
- ◁ ○ ▷ PEDESTRIAN PHASE
- NUMBER REFERS TO ASSOCIATED PHASE

**NOTE:**  
 PHASE 9 IS EXCLUSIVE PEDESTRIAN PHASE

**PHASE DESIGNATION DIAGRAM**



EMERGENCY VEHICLE PREEMPTORS			
EMERGENCY VEHICLE PREEMPTOR	3	4	5
MOVEMENT	← →	↑	↓

L.C.D.O.T. TRAFFIC SIGNAL INSTALLATION ELECTRICAL SERVICE REQUIREMENTS					TOTAL WATTAGE
TYPE	NO. OF LAMPS	WATTAGE X INCAND.	LED	% OPERATION	
SIGNAL (RED)	13		10	0.50	65.0
(YELLOW)	13		19	0.10	24.7
(GREEN)	13		11	0.40	57.2
ARROW	9		9	0.10	8.1
PED. SIGNAL	8		9	1.00	72.0
CONTROLLER	1		100	1.00	100.0
LUMINAIRE	-		250	0.50	-
L.E.D. ST. NAME SIGN	4		64	0.50	128.0
VIDEO SYSTEM	1		150	1.00	150.0
BATTERY BACKUP	1		25	1.00	25.0

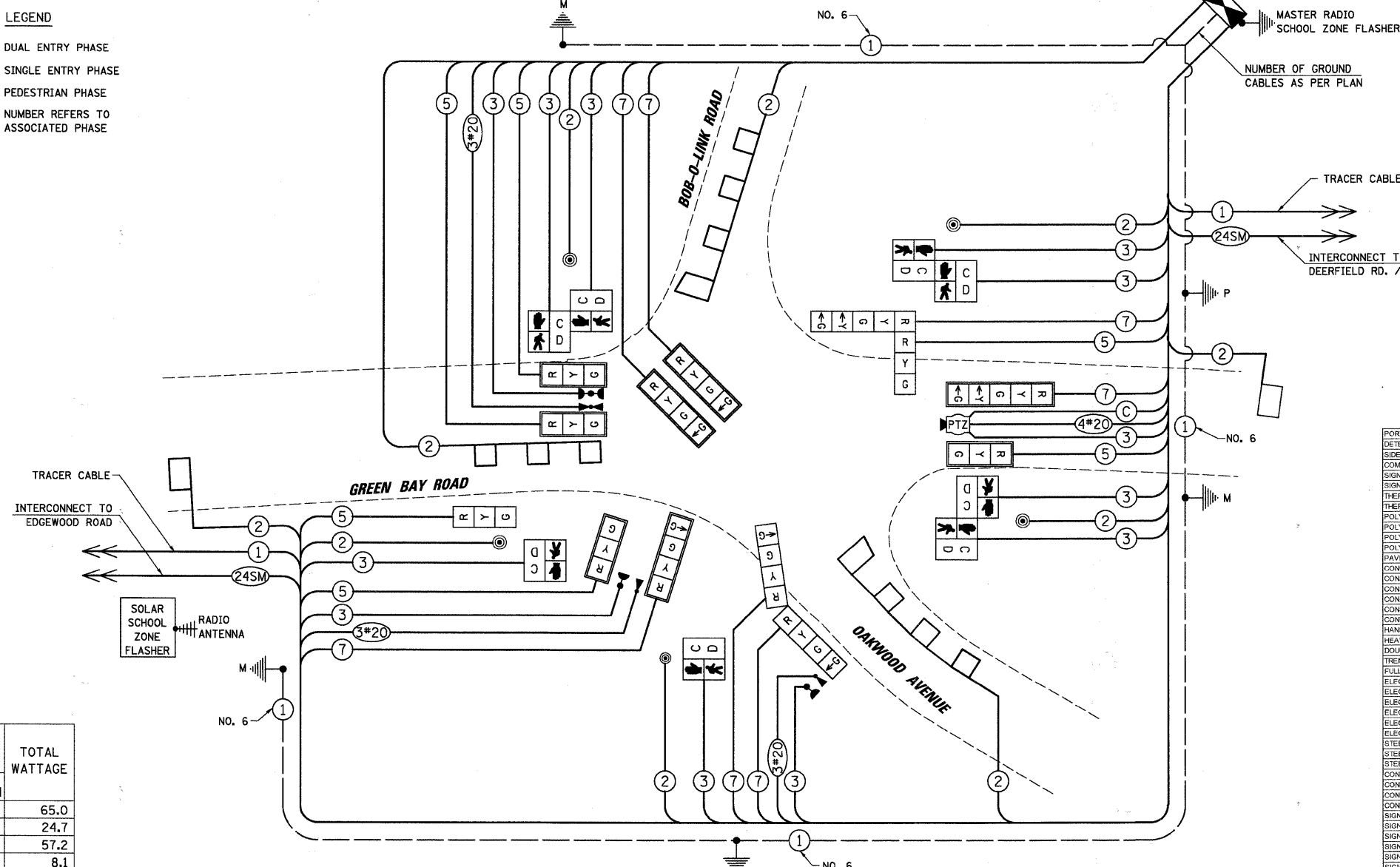
ENERGY COSTS TO: TOTAL = 630.0

**CITY OF HIGHLAND PARK**  
 1707 ST. JOHNS AVENUE  
 HIGHLAND PARK, IL 60035-3593  
 ENERGY SUPPLY: CONTACT: JEAN WILL  
 PHONE: (847) 816-5459  
 COMPANY: COMED

**RESTORATION OF WORK AREA, RESTORATION OF THE TRAFFIC SIGNAL WORK AREA SHALL BE INCLUDED IN THE COST FOR THE RELATED PAY ITEM SUCH AS FOUNDATION, CONDUIT, HANDHOLE, TRENCH AND BACKFILL ETC., AND NO EXTRA COMPENSATION SHALL BE ALLOWED. ALL ROADWAY SURFACES SUCH AS SHOULDERS, MEDIANS, SIDEWALKS, PAVEMENT, ETC. SHALL BE REPLACED IN KIND. ALL DAMAGE TO MOWED LAWNS SHALL BE REPLACED WITH AN APPROVED SOD, AND ALL DAMAGE TO UNMOWED FIELDS SHALL BE SEED IN ACCORDANCE WITH STANDARD SPECIFICATIONS 252 AND 250 RESPECTIVELY.**

**NOTE:**  
 THE TRAFFIC SIGNAL CONTROLLER EQUIPMENT FOR THIS PROJECT SHALL BE "ECONOLITE" TO MATCH THE EXISTING ADJACENT SYSTEM.

**NOTE:**  
 THE EMERGENCY VEHICLE PREEMPTION EQUIPMENT FOR THIS PROJECT SHALL BE "OPTICOM" TO MATCH THE EXISTING SYSTEM.



**CABLE PLAN**

- CONSTRUCTION NOTES:**
- ① THE TRAFFIC SIGNAL CONTROLLER SHALL BE NTCIP COMPATIBLE.
  - ② REMOVE EXISTING SCHOOL FLASHER AND ABANDON CONDUIT.
  - ③ PTZ ON 20 FT. MAST ARM AT 30 FT. MOUNTING HEIGHT.
  - ④ INSTALL RADIO SOLAR SCHOOL ZONE FLASHER, MASTER RADIO CONTROL AND ETHERNET COMMUNICATION MODULE TO BE INSTALLED IN TRAFFIC SIGNAL CABINET.
  - ⑤ THE DUAL MAST ARM SHALL BE MOUNTED AT A 120 DEGREE ANGLE.

ITEM	UNIT	TOTAL
PORTLAND CEMENT CONCRETE SIDEWALK 5 INCH	SQ FT	441
DETECTABLE WARNINGS	SQ FT	128
SIDEWALK REMOVAL	SQ FT	441
COMBINATION CONCRETE CURB AND GUTTER REMOVAL AND REPLACEMENT	FOOT	113
SIGN PANEL - TYPE 1	SQ FT	9
SIGN PANEL - TYPE 2	SQ FT	26.25
THERMOPLASTIC PAVEMENT MARKING - LINE 1/2"	FOOT	84
THERMOPLASTIC PAVEMENT MARKING - LINE 2 1/2"	FOOT	15
POLYUREA PAVEMENT MARKING TYPE 1 - LETTERS AND SYMBOLS	SQ FT	36.4
POLYUREA PAVEMENT MARKING TYPE 1 - LINE 1/2"	FOOT	83
POLYUREA PAVEMENT MARKING TYPE 1 - LINE 1/2"	FOOT	306
POLYUREA PAVEMENT MARKING TYPE 1 - LINE 2 1/2"	FOOT	65
PAVEMENT MARKING REMOVAL	SQ FT	487
CONDUIT IN TRENCH 2" DIA. GALVANIZED STEEL	FOOT	548
CONDUIT IN TRENCH 2 1/2" DIA. GALVANIZED STEEL	FOOT	95
CONDUIT IN TRENCH 3" DIA. GALVANIZED STEEL	FOOT	19
CONDUIT IN TRENCH 4" DIA. GALVANIZED STEEL	FOOT	61
CONDUIT PUSHED 2" DIA. GALVANIZED STEEL	FOOT	102
CONDUIT PUSHED 4" DIA. GALVANIZED STEEL	FOOT	160
HANDHOLE	EACH	4
HEAVY-DUTY HANDHOLE	EACH	1
DOUBLE HANDHOLE	EACH	2
TRENCH AND BACKFILL FOR ELECTRICAL WORK	FOOT	825
FULL-ACTUATED CONTROLLER AND TYPE IV CABINET, SPECIAL	EACH	1
ELECTRIC CABLE IN CONDUIT, SIGNAL, NO. 14 2C	FOOT	773
ELECTRIC CABLE IN CONDUIT, SIGNAL, NO. 14 3C	FOOT	2010
ELECTRIC CABLE IN CONDUIT, SIGNAL, NO. 14 5C	FOOT	779
ELECTRIC CABLE IN CONDUIT, SIGNAL, NO. 14 7C	FOOT	1235
ELECTRIC CABLE IN CONDUIT, LEAD-IN, NO. 14 1 PAIR	FOOT	1195
ELECTRIC CABLE IN CONDUIT, SERVICE, NO. 6 2 C	FOOT	25
15 STEEL MAST ARM ASSEMBLY AND POLE, 28 FT. (SPECIAL)	EACH	1
STEEL MAST ARM ASSEMBLY AND POLE WITH DUAL MAST ARMS, 22 FT. AND 24 FT. (SPECIAL)	EACH	1
STEEL COMBINATION MAST ARM ASSEMBLY AND POLE 28 FT. (SPECIAL)	EACH	1
CONCRETE FOUNDATION, TYPE A	FOOT	8
CONCRETE FOUNDATION, TYPE C	FOOT	4
CONCRETE FOUNDATION, TYPE E 30-INCH DIAMETER	FOOT	20
CONCRETE FOUNDATION, TYPE E 36-INCH DIAMETER	FOOT	15
SIGNAL HEAD, LED, 1-FACE, 3-SECTION, MAST-ARM MOUNTED	EACH	4
SIGNAL HEAD, LED, 1-FACE, 3-SECTION, BRACKET MOUNTED	EACH	1
SIGNAL HEAD, LED, 1-FACE, 4-SECTION, MAST-ARM MOUNTED	EACH	3
SIGNAL HEAD, LED, 1-FACE, 5-SECTION, MAST-ARM MOUNTED	EACH	1
SIGNAL HEAD, LED, 2-FACE, 4-SECTION, BRACKET MOUNTED	EACH	1
SIGNAL HEAD, LED, 2-FACE, 1-3 SECTION, 1-3 SECTION BRACKET MOUNTED	EACH	1
PEDESTRIAN SIGNAL HEAD, LED, 1-FACE, BRACKET MOUNTED WITH COUNTDOWN TIMER	EACH	2
PEDESTRIAN SIGNAL HEAD, LED, 2-FACE, BRACKET MOUNTED WITH COUNTDOWN TIMER	EACH	3
TRAFFIC SIGNAL BACKPLATE, LOUVERED, ALUMINUM	EACH	8
INDUCTIVE LOOP DETECTOR	EACH	5
DETECTOR LOOP, TYPE 1	FOOT	328
LIGHT DETECTOR	EACH	3
LIGHT DETECTOR AMPLIFIER	EACH	1
PEDESTRIAN PUSH-BUTTON	EACH	0
TEMPORARY TRAFFIC SIGNAL INSTALLATION	EACH	1
REMOVE EXISTING TRAFFIC SIGNAL EQUIPMENT	EACH	1
REMOVE EXISTING HANDHOLE	EACH	8
REMOVE EXISTING CONCRETE FOUNDATION	EACH	8
RADIO ACTIVATED SOLAR ADVANCE FLASHING BEACON SYSTEM (COMPLETE)	EACH	1
SERVICE INSTALLATION - POLE MOUNTED	EACH	1
UNINTERRUPTIBLE POWER SUPPLY	EACH	1
ELECTRIC CABLE IN CONDUIT, GROUNDING NO. 6 1C	FOOT	421
ELECTRIC CABLE IN CONDUIT, SIGNAL, NO. 20 3C, TWISTED, SHIELDED	FOOT	652
ELECTRIC CABLE IN CONDUIT, COAXIAL	FOOT	208
PEDESTRIAN PUSH-BUTTON, SPECIAL	EACH	5
TRAFFIC SIGNAL POST, 18 FOOT, (SPECIAL)	EACH	1
TRAFFIC SIGNAL POST, 18 FOOT, (SPECIAL)	EACH	1
REMOTE-CONTROLLED VIDEO SYSTEM	EACH	1
LAYER II (DUAL LINK) SWITCH	EACH	1
VIDEO ENCODER	EACH	1
ELECTRIC CABLE IN CONDUIT, 4/C # 20, VIDEO	FOOT	208

FILE NAME = Na:\L.CDOT\1098487\Traf\10\CABL.CBRD-BobO-Link.dgn  
 USER NAME = FBARISO  
 DESIGNED - ABR  
 DRAWN - FPB / FCP  
 CHECKED - MJT  
 DATE - APRIL 30, 2010  
 PLOT SCALE = NOT TO SCALE  
 PLOT DATE = 5/3/2010

REVISIONS:  
 REVISED -  
 REVISED -  
 REVISED -  
 REVISED -

**STATE OF ILLINOIS  
 DEPARTMENT OF TRANSPORTATION**

**SCHEDULE OF QUANTITIES, CABLE PLAN, PHASE DESIGNATION DIAGRAM AND EMERGENCY VEHICLE PREEMPTION SEQUENCE  
 GREEN BAY ROAD AND BOB-O-LINK RD./OAKWOOD AVE.**  
 SCALE: NOT TO SCALE SHEET NO. 1 OF 1 SHEETS STA. -- TO STA. --

F.A.P. RTE.	SECTION	COUNTY	TOTAL SHEETS	SHEET NO.
	06-00924-00-TL	LAKE	76	14
CONTRACT NO. 63485			ILLINOIS FED. AID PROJECT	